

Brown-0202 (2 February 2020)

Janet Intrieri (Chief Scientist)

Compiled: 02.02 / 20:30 AST

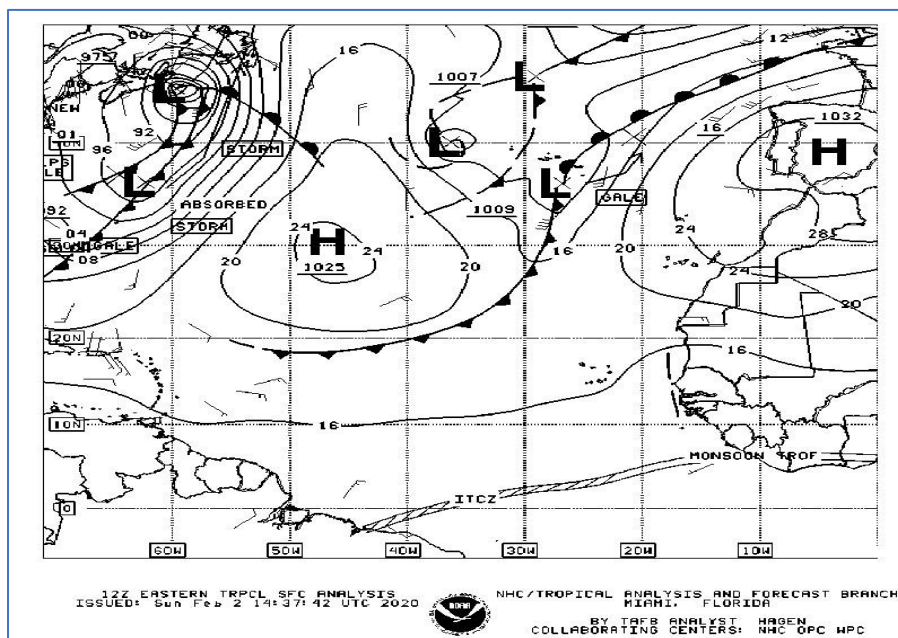
1. Objective

The Brown will remain on station at the P3 Point (P3P - 13° 54' / 54° 30') to obtain continuous measurements of the aerosol, BL, clouds, and ocean properties.

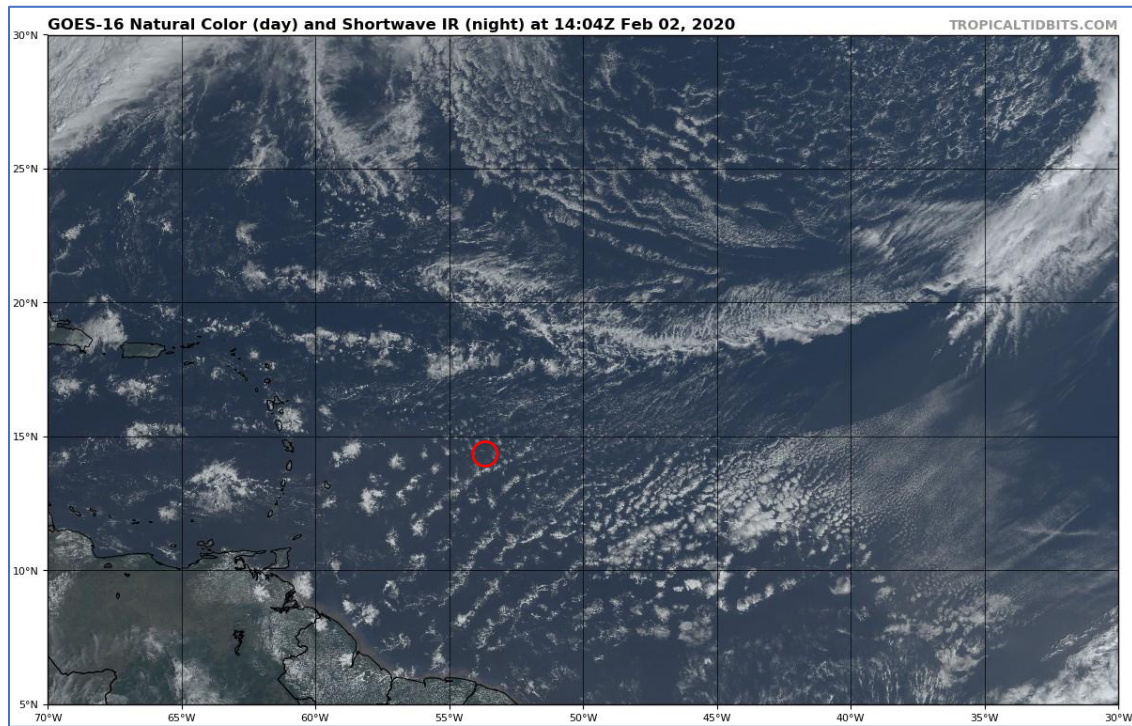
2. Synoptic Situation

Fair skies alternated with a few intervals of cloudiness today under hazy conditions. Similar swells (1.5m to 2.0m) persisted while wind speeds ranged from 12 to 15 knots.

Local Time (UTC -4)	Ship's Position	Coverage	Types	Remarks
800	13°54'N 054°30'W	0/8 High	N/A	Hazy conditions
		0/8 Mid	N/A	
		1/8 Low	Cu, Sc	
1100	13°54'N 054°30'W	0/8 High	N/A	Hazy conditions, Vicinity showers
		0/8 Mid	N/A	
		5/8 Low	Cu, Sc	
1800	13°54'N 054°30'W°	0/8 High	N/A	Hazy conditions, Vicinity showers
		0/8 Mid	N/A	
		3/8 Low	Cu, Sc	



NHC/TROPICAL ANALYSIS AND FORECAST BRANCH 12Z ANALYSIS



GOES16 NATURAL COLOR IMAGE

3. Cruise-day Elements

Sondes launched every 4 hours around the clock from 0 UTC
 CTD to 400 m at 0900 AST
 uCTD's to ~150 m every odd-hour around the clock

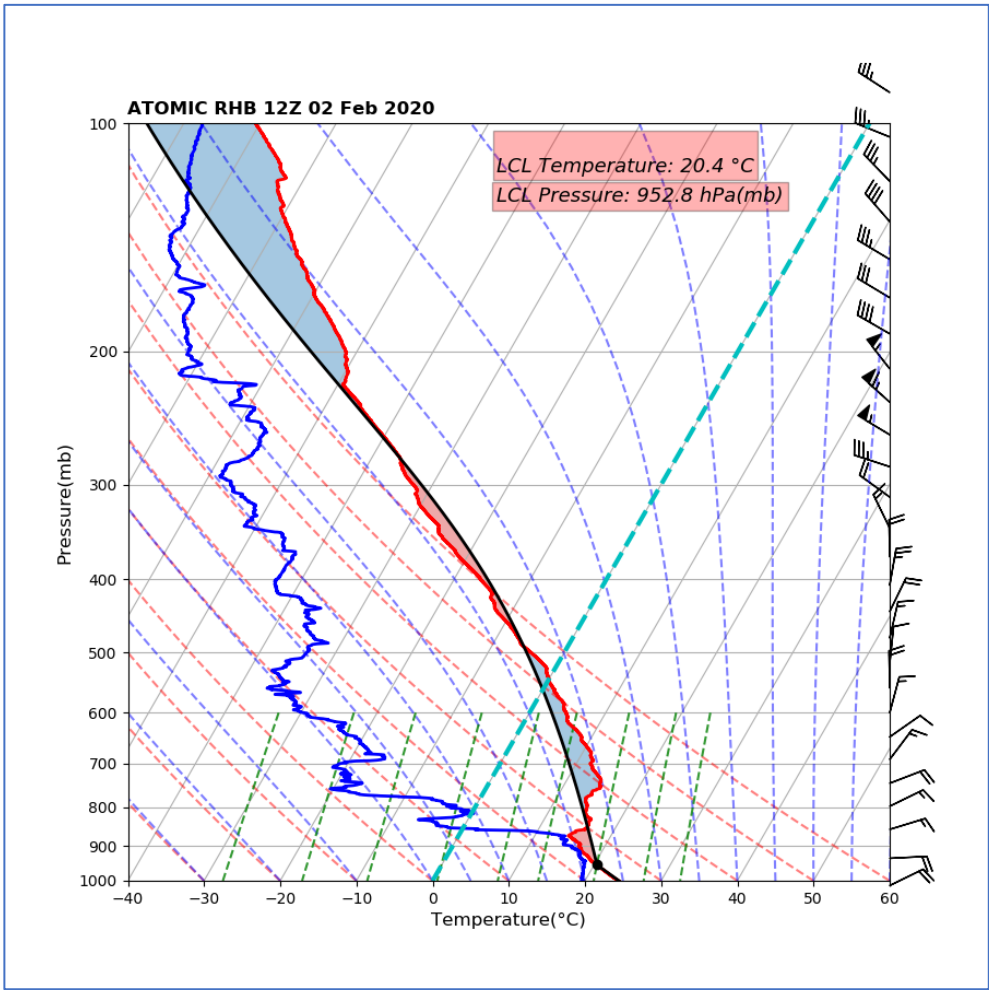
4. Instrument Status

Drifters deployed across a temperature & salinity front on Jan 30 are all working well and reporting measurements. The second Wave Glider was intercepted yesterday morning to disconnect the radiometer which was damaged and is no longer obtaining data. All other sensors looked fine. No changes of the ship borne sensors from previous report.

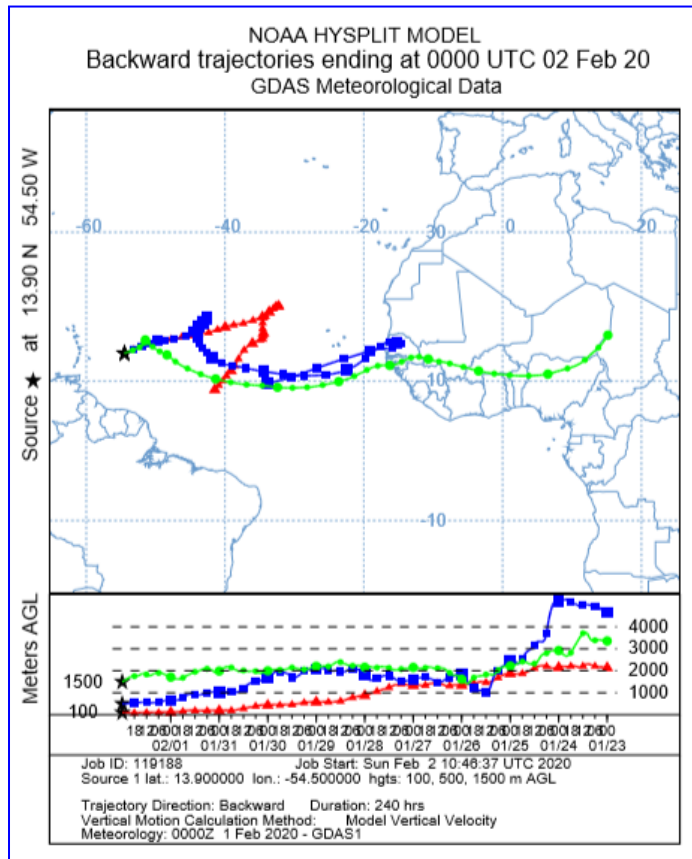
5. Outlook

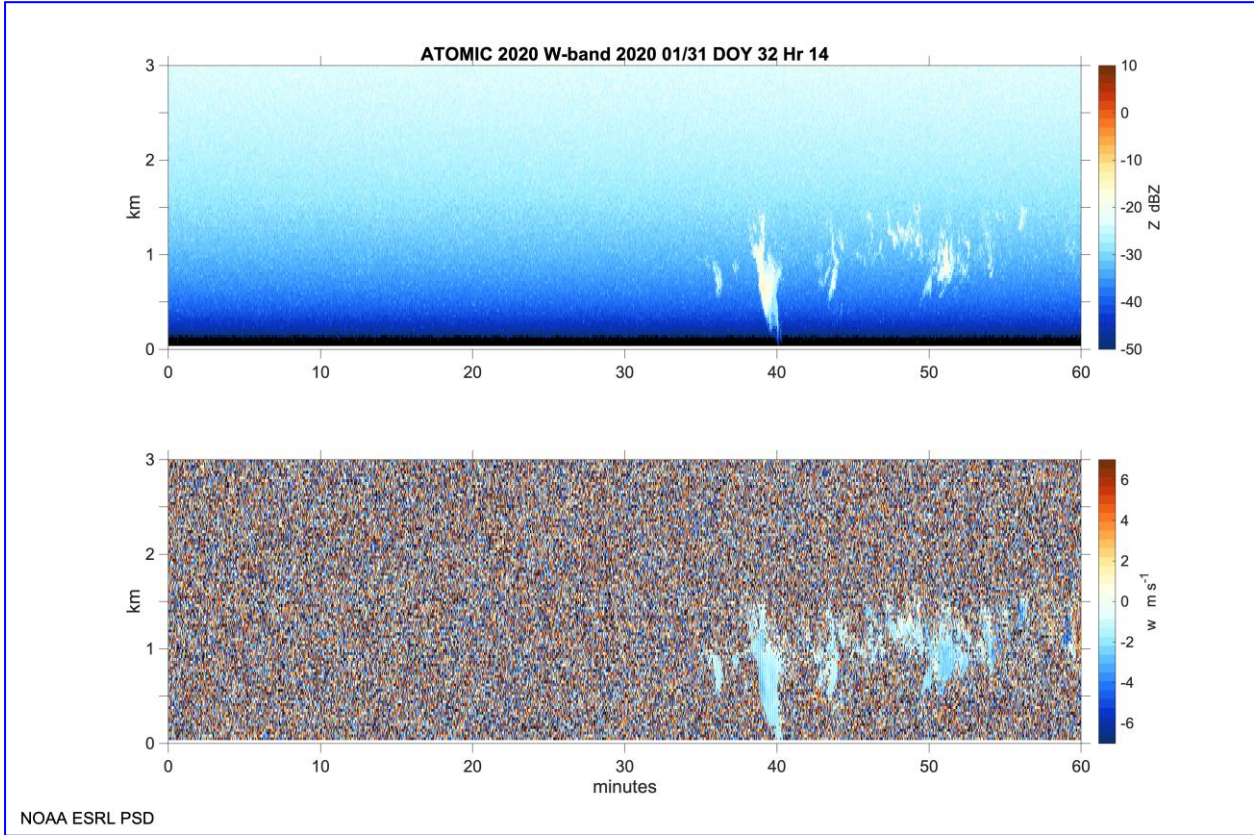
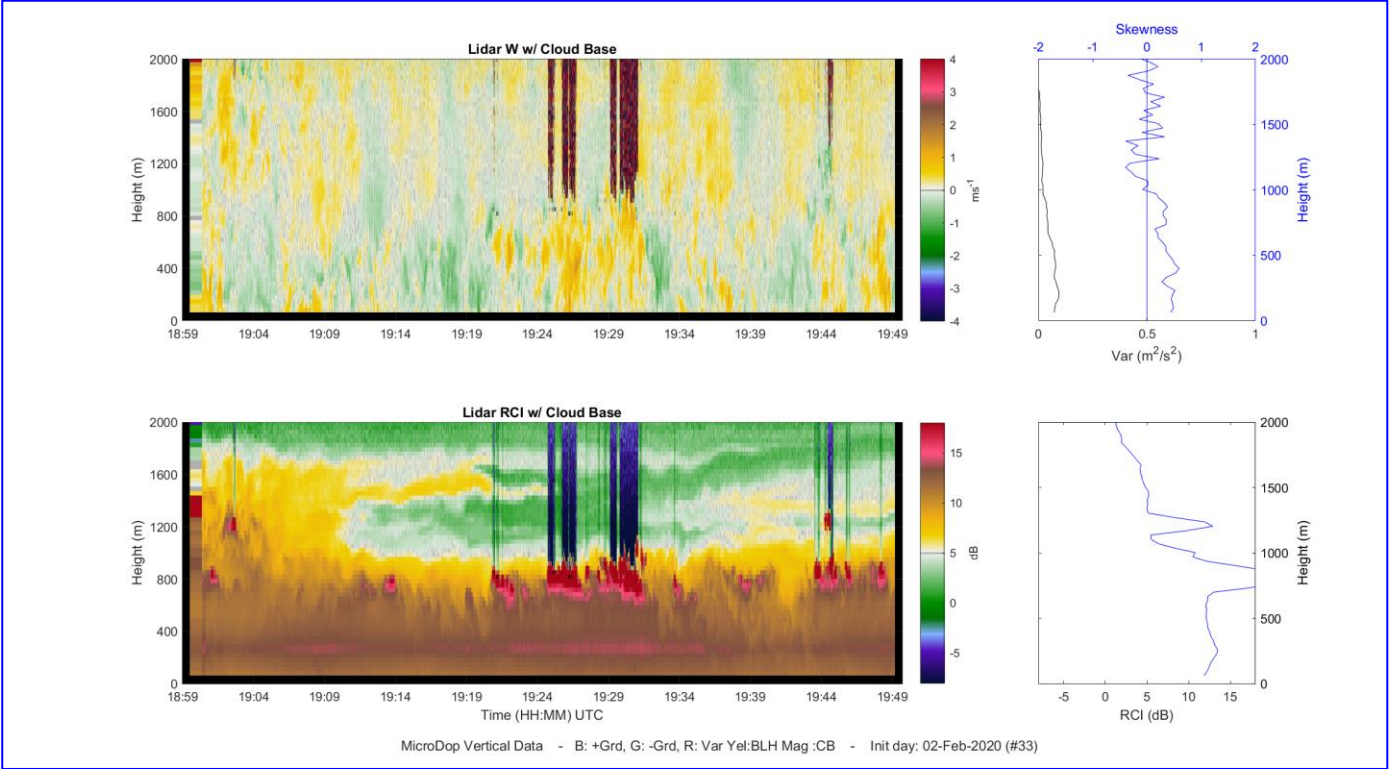
The Brown will remain stationed at P3P (13° 54' / 54° 30') and oriented into the wind. Dust event continues for aerosol observing. Next P3 flight anticipated on Feb 3rd. Regularly deployed balloons, rosette CTD to 400 m at 0900 AST and uCTD to be lowered at odd-hour times throughout the 24 hour period will continue.

6. Figures



RONALD H BROWN SKEW-T (12Z)





[NOTE: Radar figure above is for Feb 1 (not Jan 31 as indicated in caption).]