

## Brown-0211 (11 February 2020)

Janet Intrieri (Chief Scientist)

Compiled: 02.11 / 19:30 AST

(All times in AST unless noted otherwise)

### 1. Objective

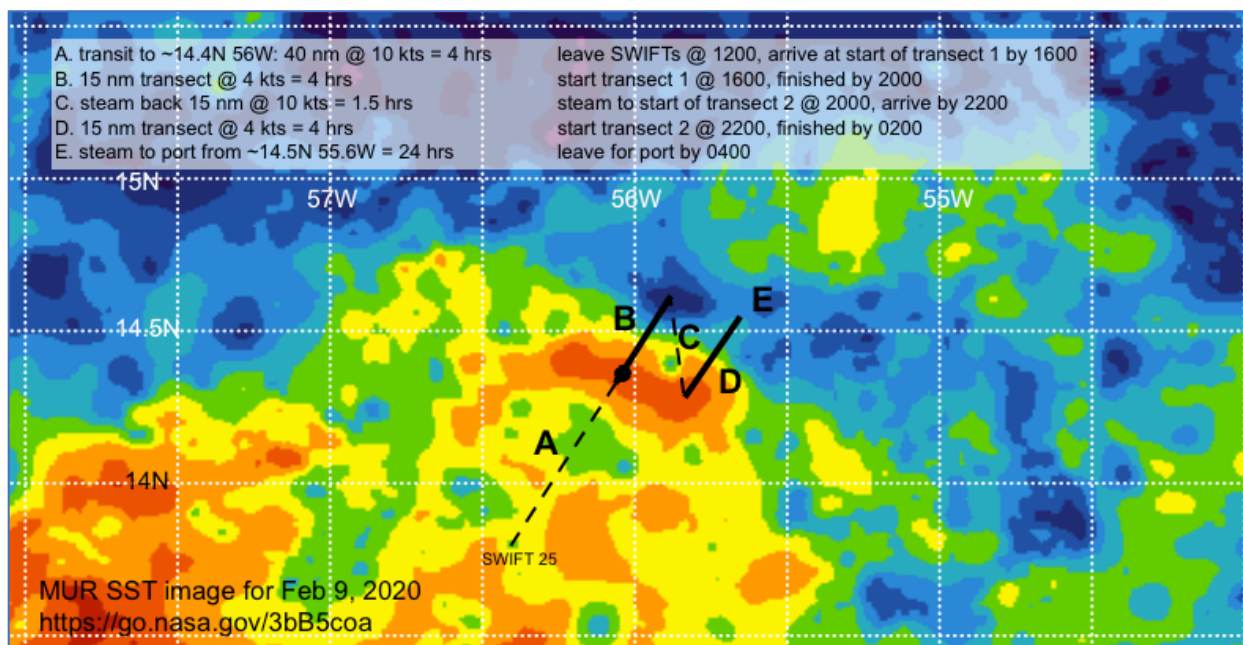
08:00 AST Recover Wave Glider

12:00-14:00 AST Recover drifters

Balloon launches every 4 hours

Lidar, radar, ceilometer obtaining continuous data

14:00 AST Transit to NE to obtain uCTD's across ocean front until 04:00 AST (Wednesday)

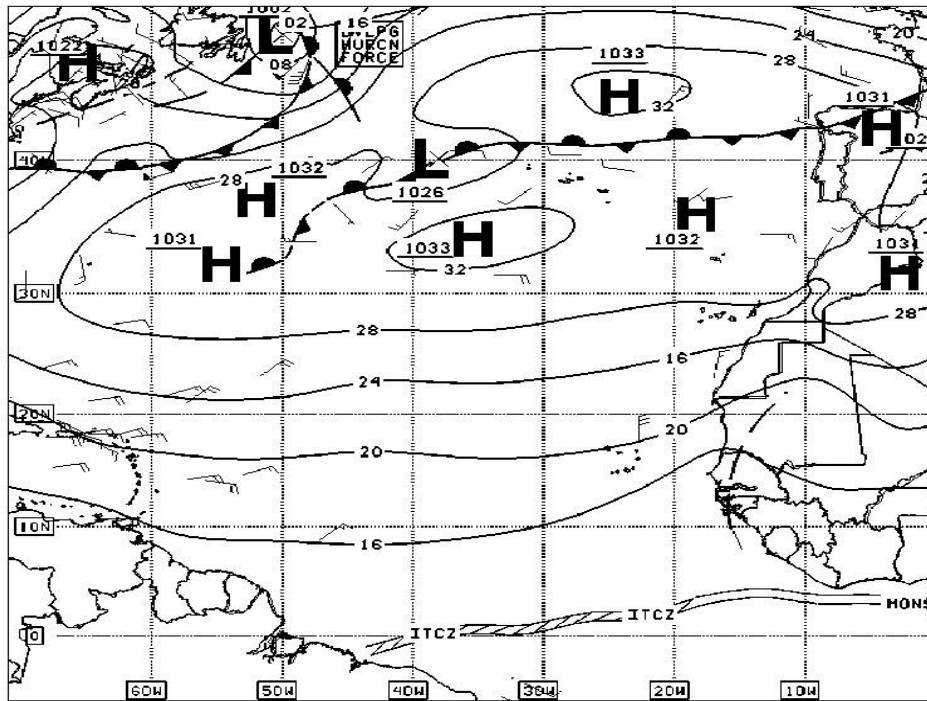


### 2. Synoptic Situation

Intervals of cloudiness and sunshine were experienced today amidst hazy conditions. Although the layer of Saharan dust lingered, it was observed mostly aloft. Above normal seas (peaking near 3.0m) and breezy conditions (ranging from 16 to 24 knots) continued.

Local Time (UTC -4)	Ship's Position	Coverage	Types	Remarks
800		0/8 High	N/A	Hazy conditions

	14°07'N 055°57'W	0/8 Mid 3/8 Low	N/A Cu	
1100	13°56'N 056°24'W	0/8 High 0/8 Mid 6/8 Low	N/A N/A Cu	Hazy conditions
1800	13°53'N 056°40'W	0/8 High 0/8 Mid 3/8 Low	N/A N/A Cu, Sc	Hazy conditions



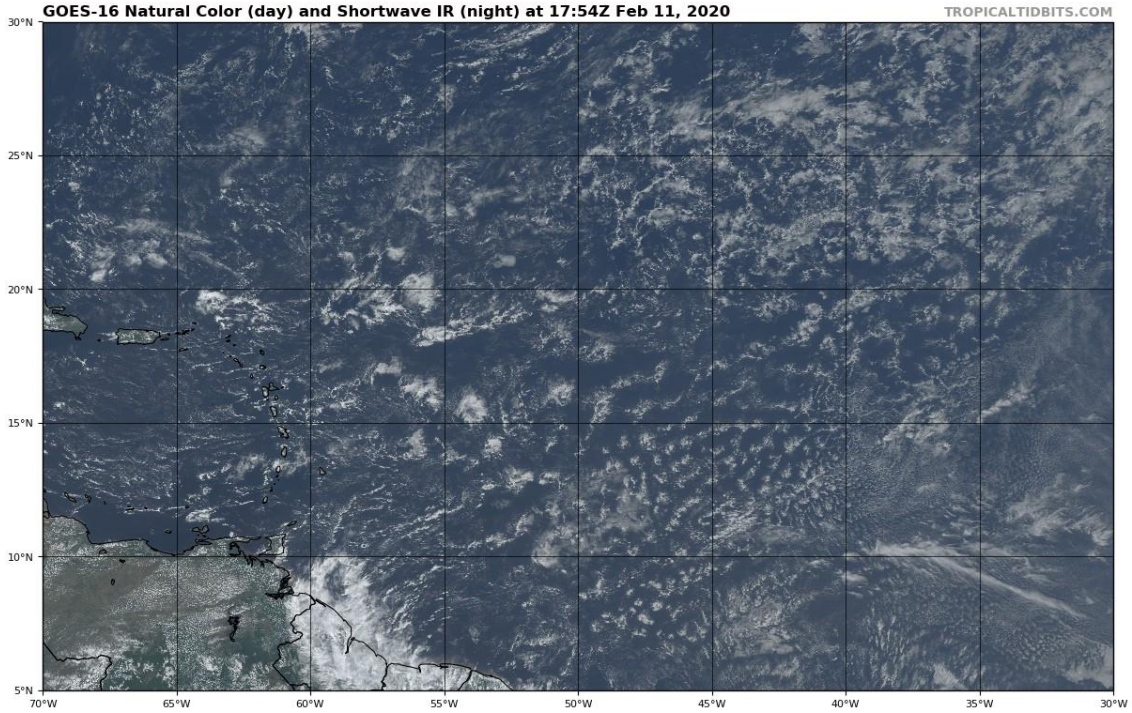
12Z EASTERN TRPCL SFC ANALYSIS  
ISSUED: Tue Feb 11 15:37:05 UTC 2020



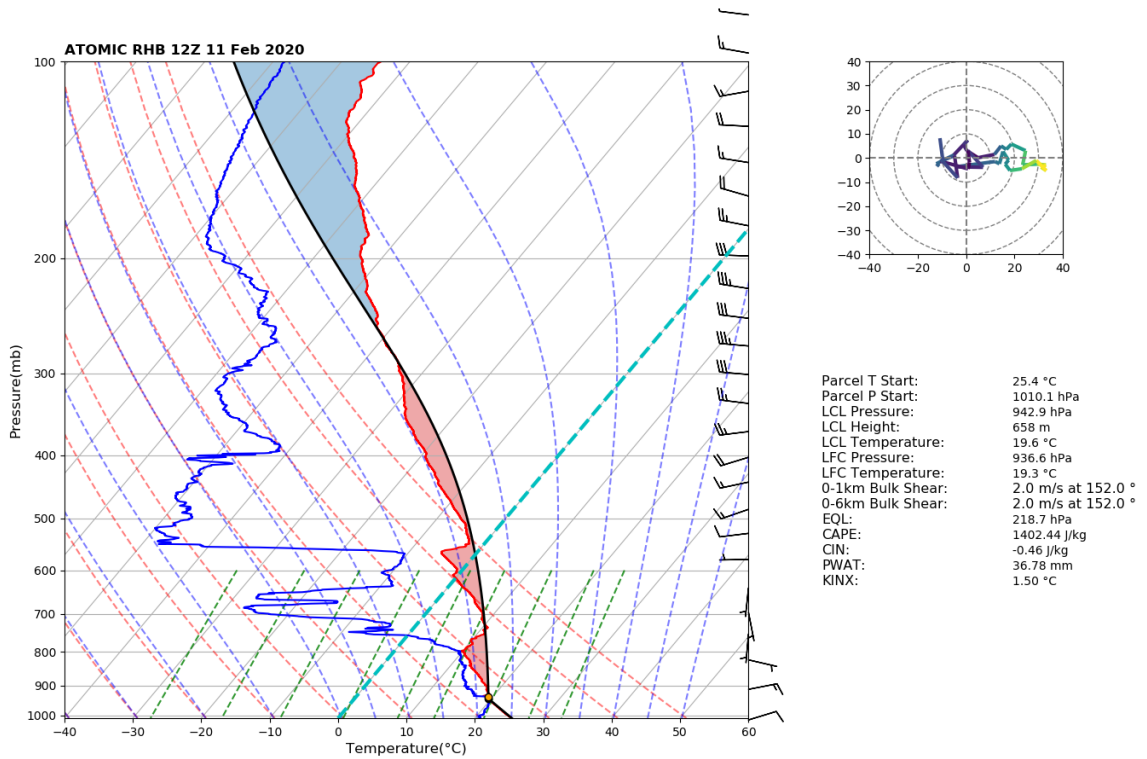
NHC/TROPICAL ANALYSIS AND FORECAST BRANCH  
MIAMI, FLORIDA

BY TRFB ANALYST TORRES  
COLLABORATING CENTERS: NHC OPC MPC

**NHC/TROPICAL ANALYSIS AND FORECAST BRANCH 12Z ANALYSIS**



**GOES16 NATURAL COLOR IMAGE**



**RONALD H BROWN SKEW-T (12Z)**

### **3. Cruise-day Elements**

P3 Night flight and low fly over (0640 AST) with CBS film crew  
Balloon launches every 4 hours  
Recovered 2 SWIFTs and 1 Wave Glider  
Aerosol sampling stopped after P3 overfly

### **4. Instrument Status**

No aerosol sampling after 08:00 AST. All other systems operational.

### **5. Outlook (through to end of campaign, Feb 13)**

#### **Feb 12**

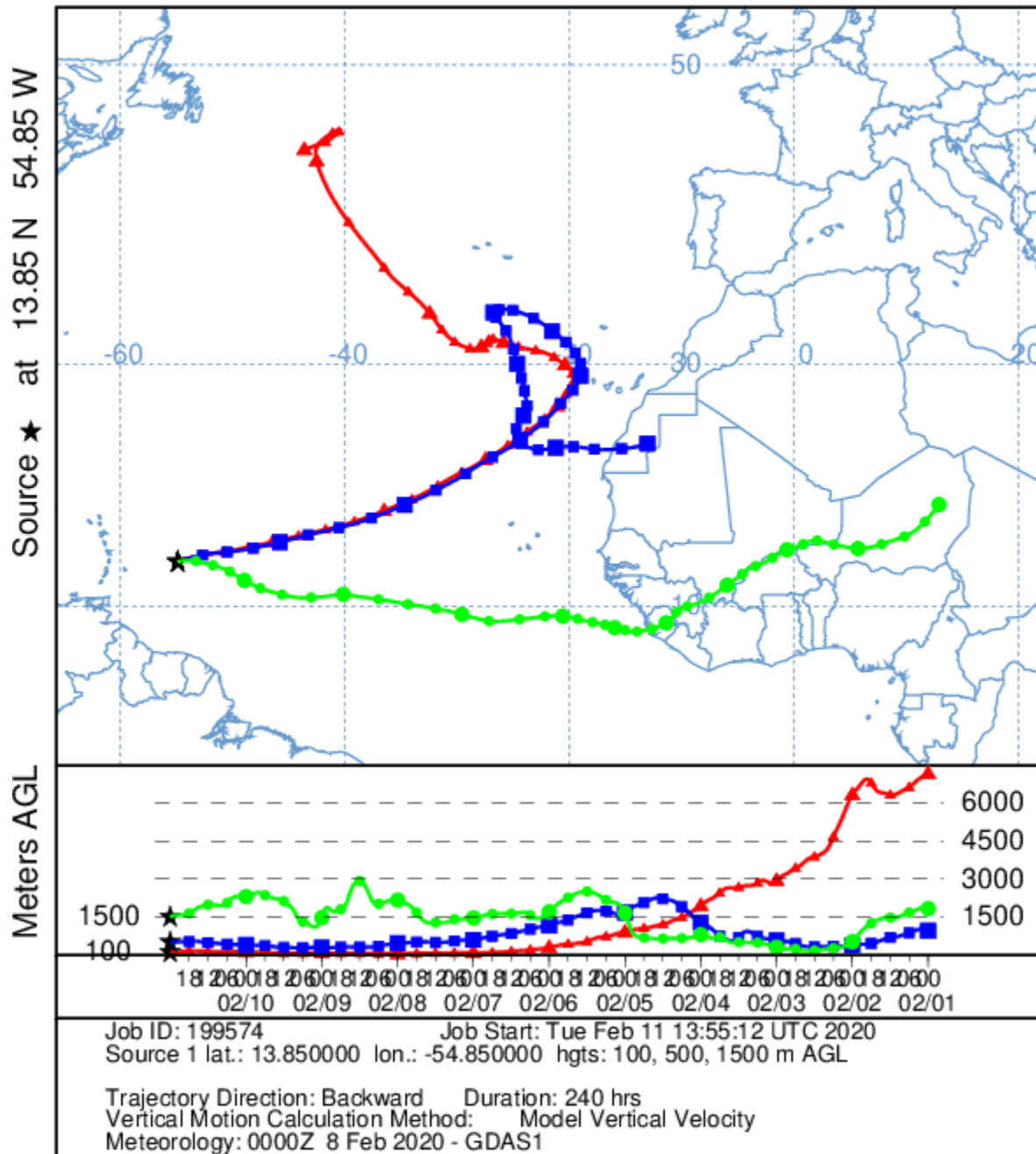
Overnight uCTD's across ocean front until 04:00 AST (Wednesday)  
Brown transits back to Barbados ~260 nm  
Balloon launches will end with 16 UTC balloon (10:45 AST)  
No aerosol sampling  
Radar to be shut down ~20 nm from Barbados

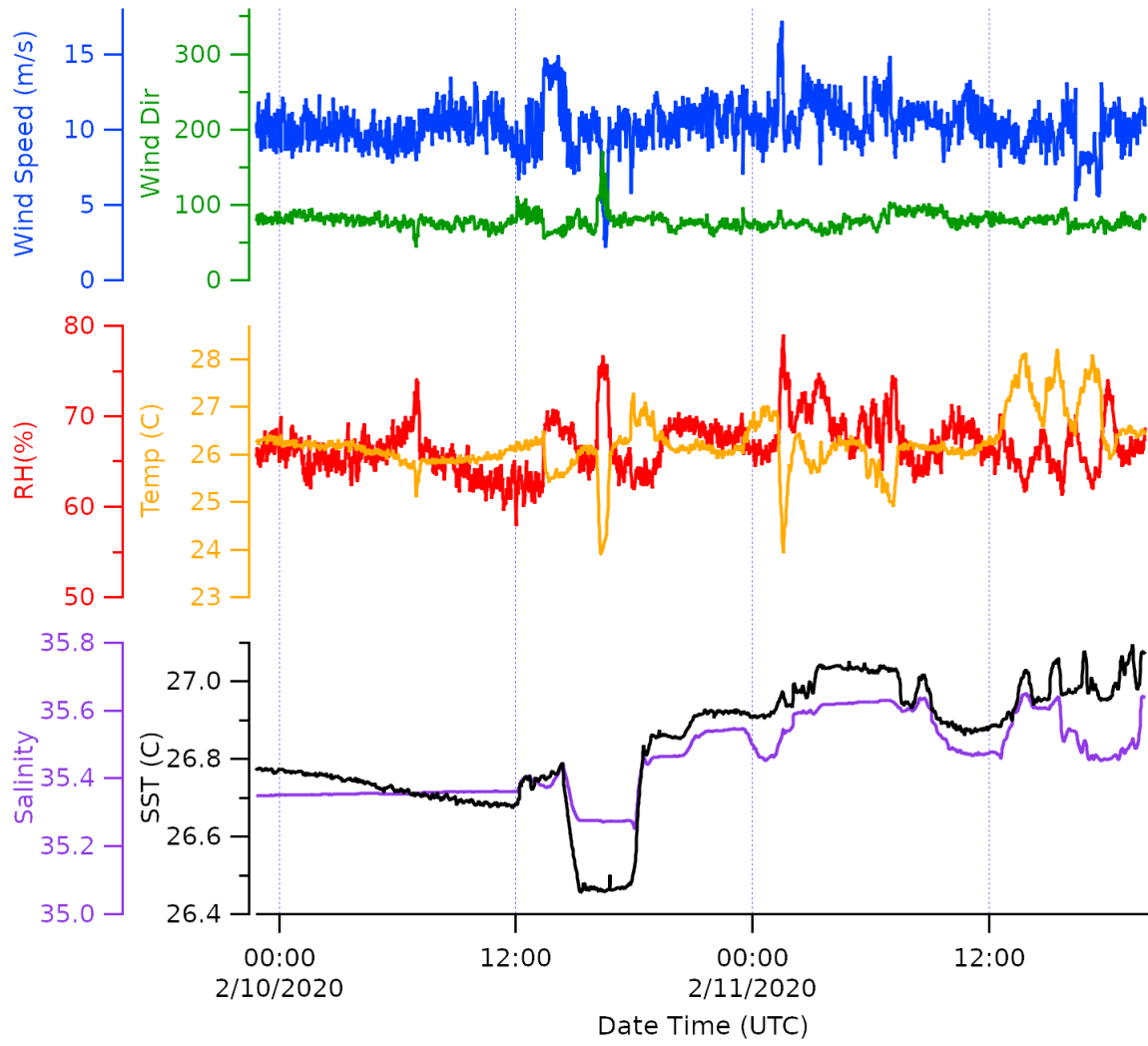
#### **Feb 13**

06:00 AST Arrive just off shore of Barbados to await pilot  
07:30 AST Requested time for pilot to bring ship into port of Barbados

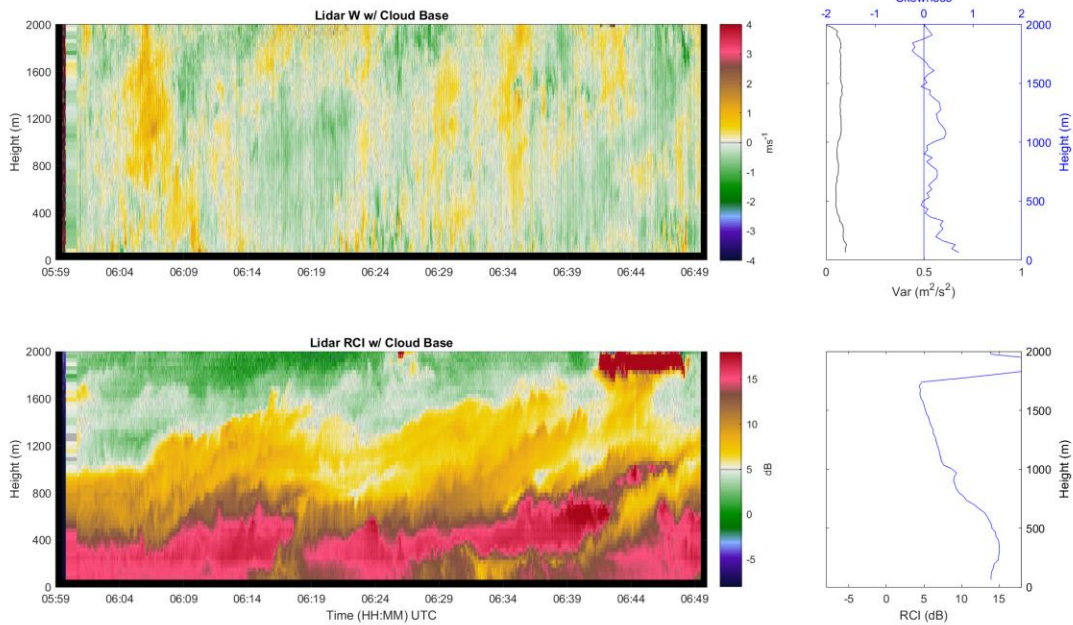
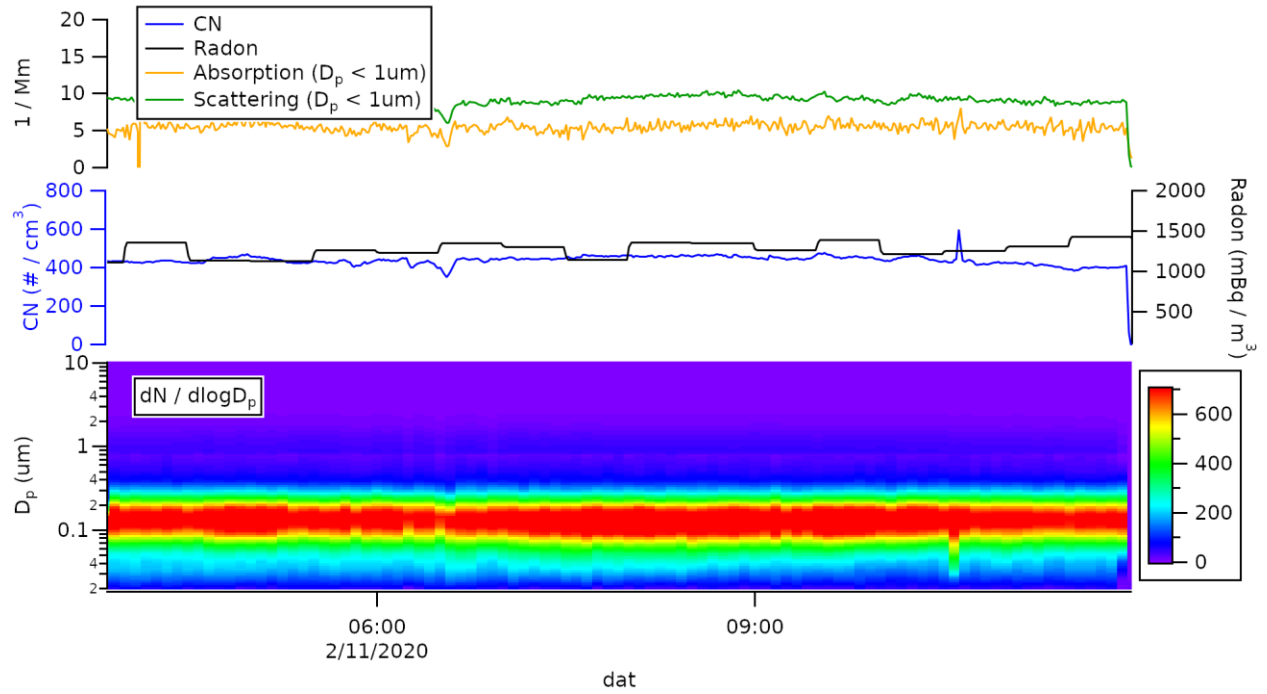
### **6. Figures**

NOAA HYSPLIT MODEL  
Backward trajectories ending at 0000 UTC 11 Feb 20  
GDAS Meteorological Data









MicroDop Vertical Data - B: +Grd, G: -Grd, R: Var Yel:BLH Mag:CB - Init day: 11-Feb-2020 (#42)