



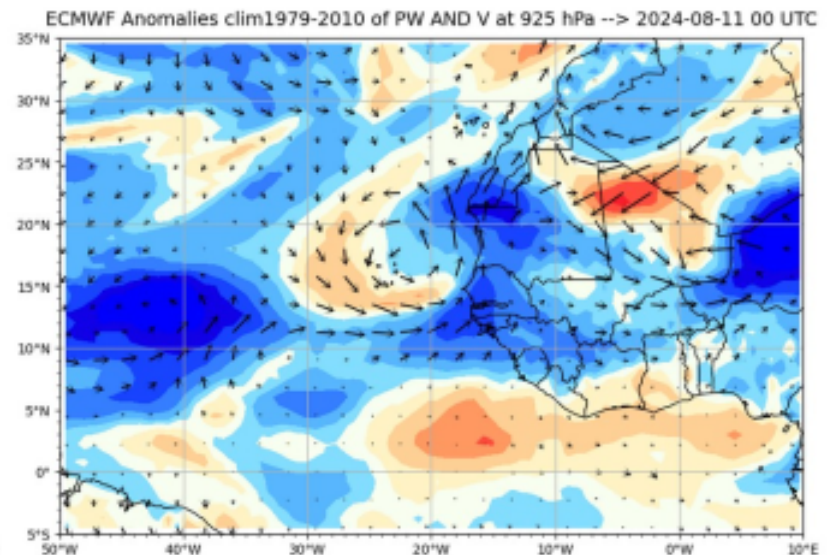
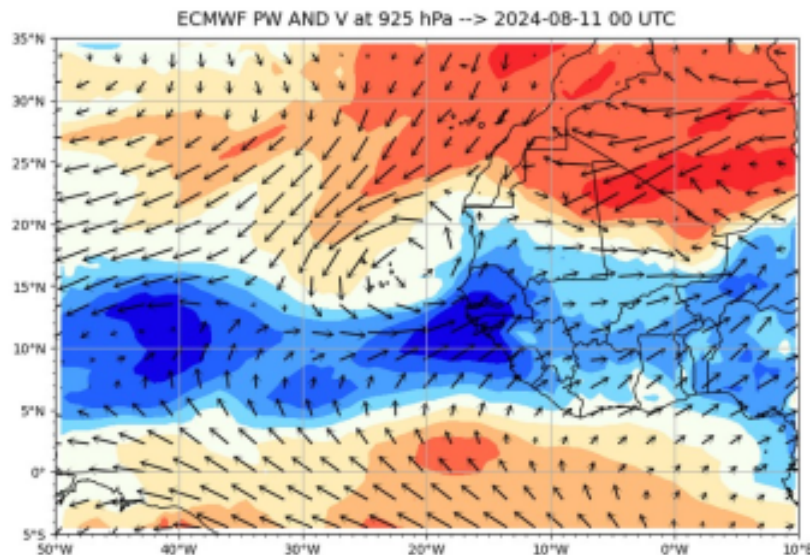
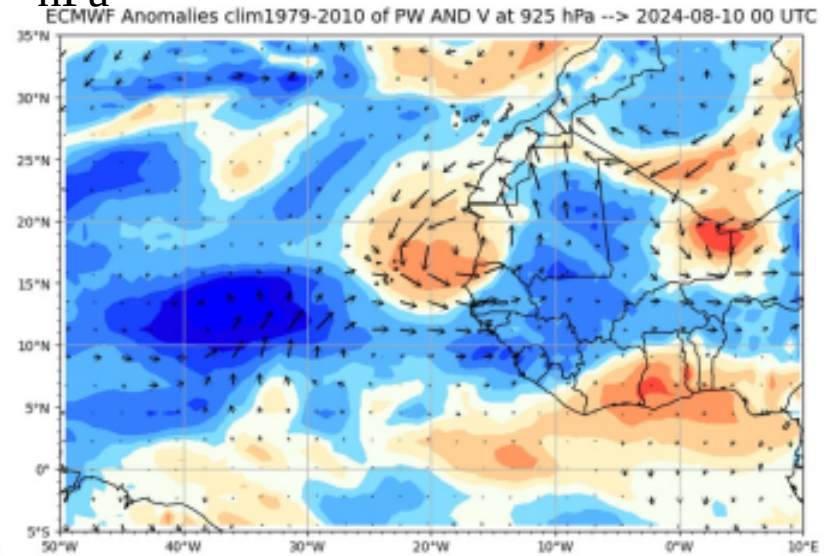
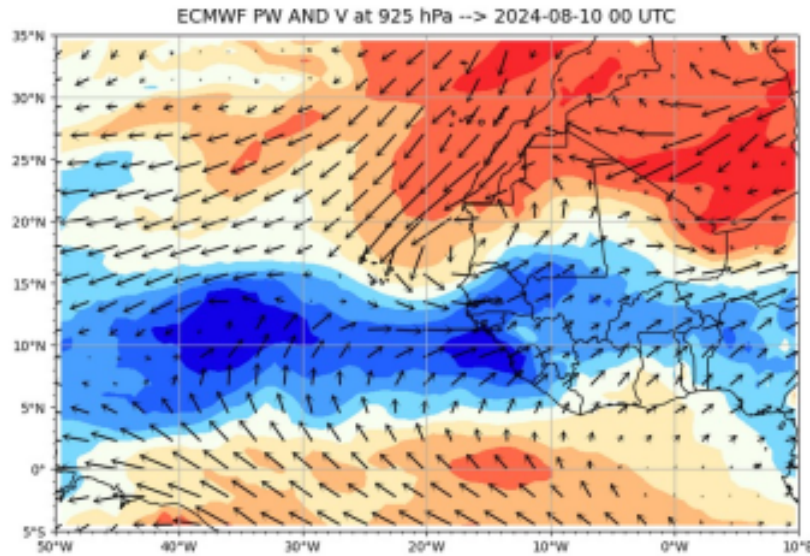
Briefing MAESTRO

09 / 08 / 2024

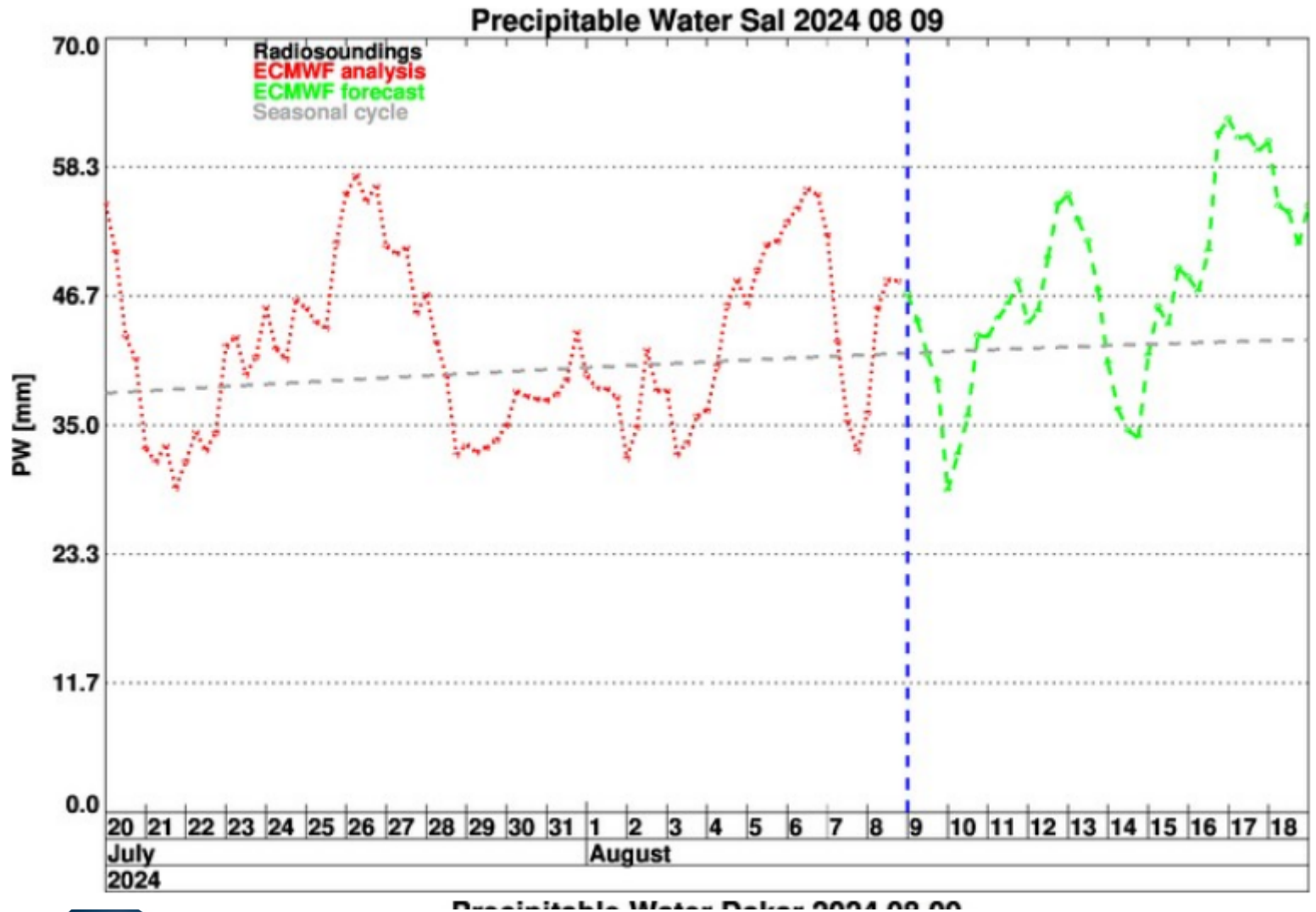
Philippe Peyrillé, Florent Beucher

Prévision init 09/08 00h

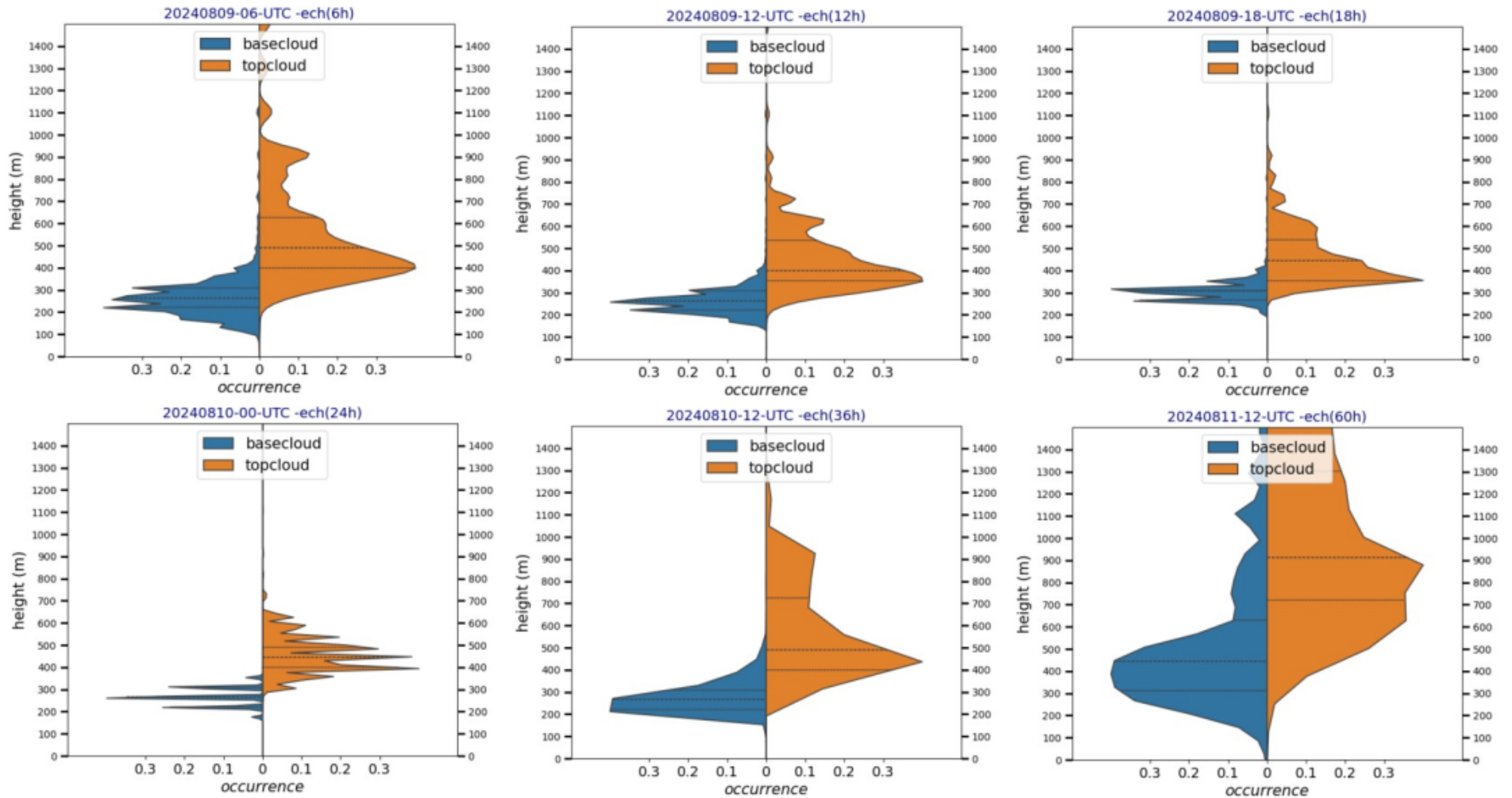
Eau Précipitable – Raw + Vt 925 hPa Eau Précipitable – Anomalie + Vt 925 hPa



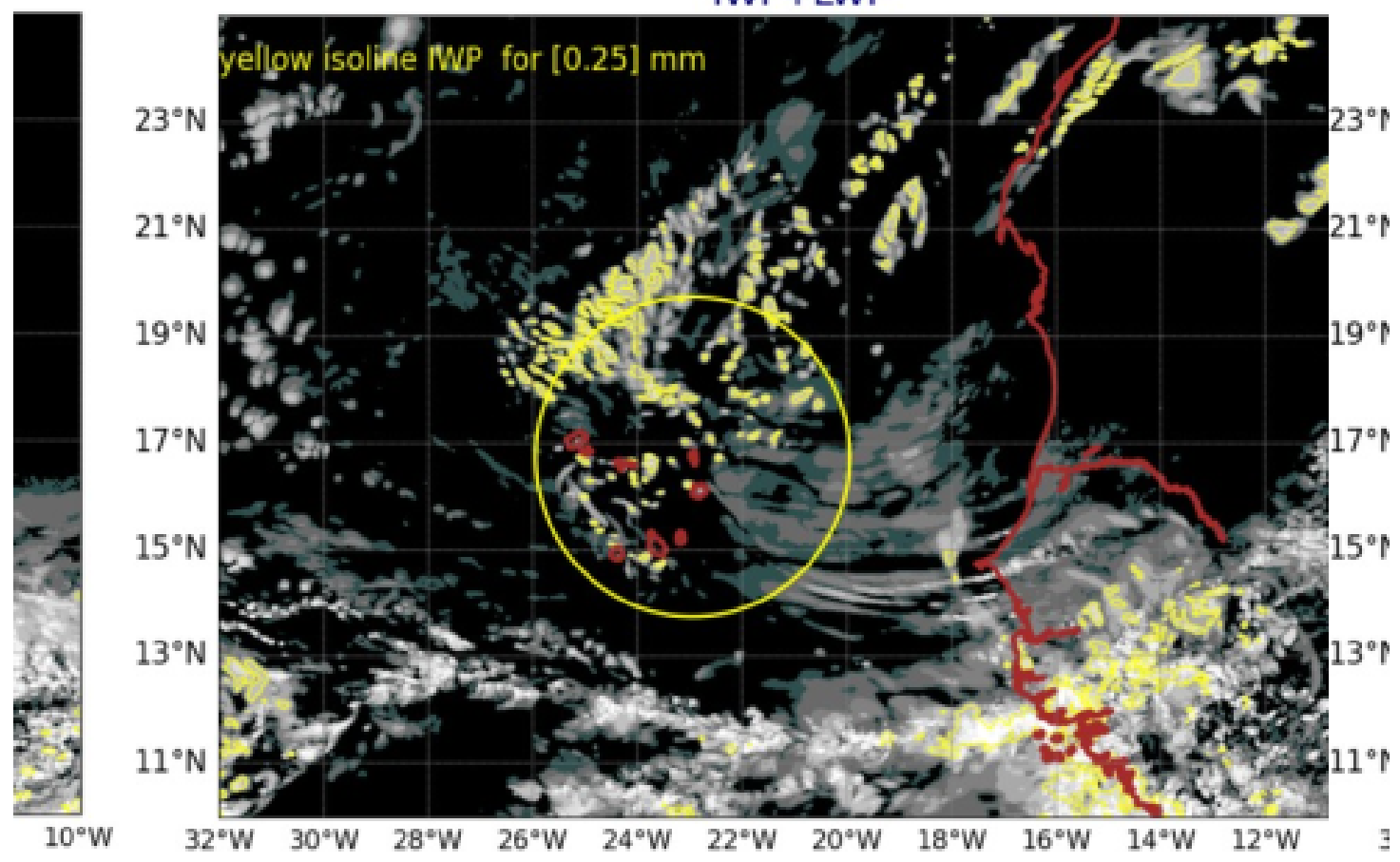
Prévision init 09/08 00h



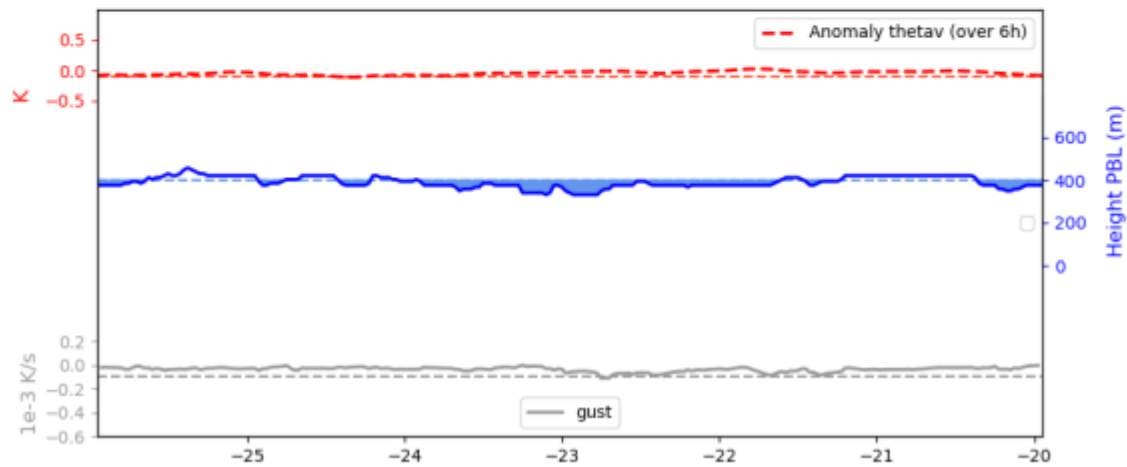
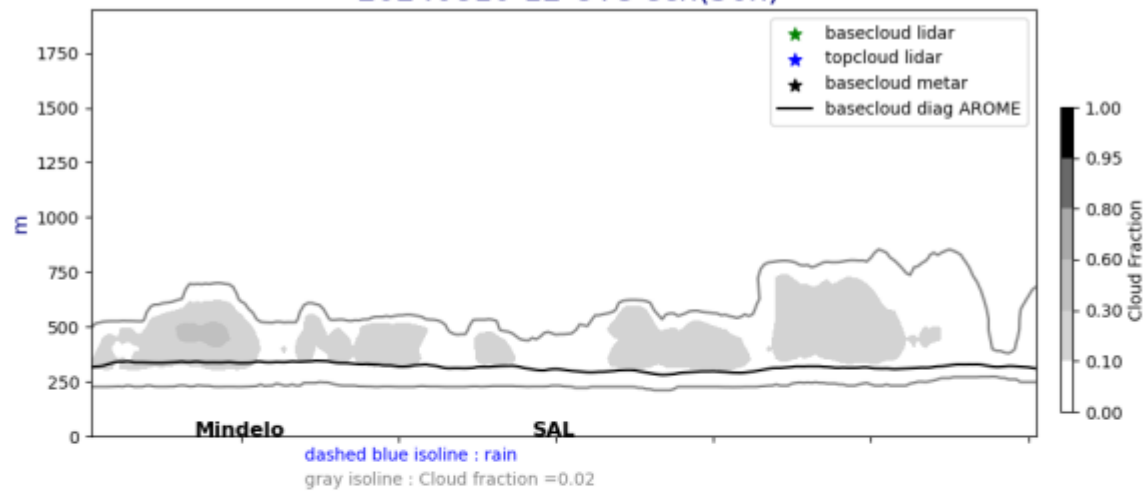
AROME base and top cloud (mean in the 3° circle)



AROME25 20240810-12-UTC -ech(36h)
IWP+LWP

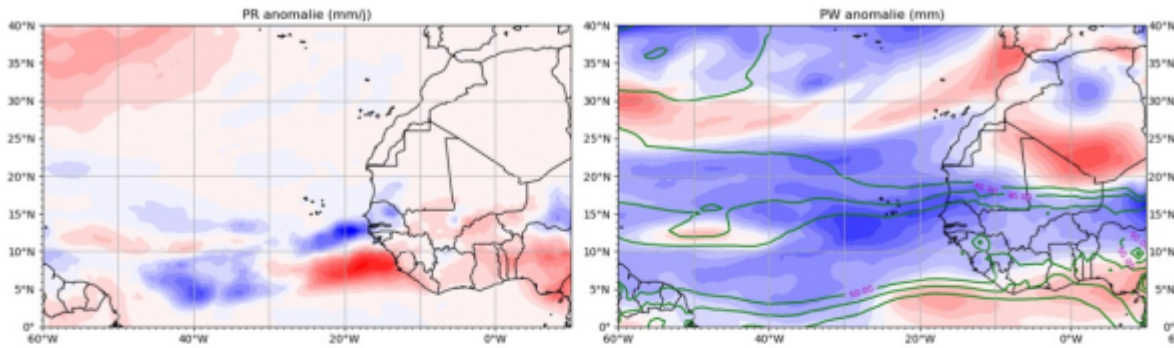


Cross section E/W @ 17.5N
20240810-12-UTC ech(36h)



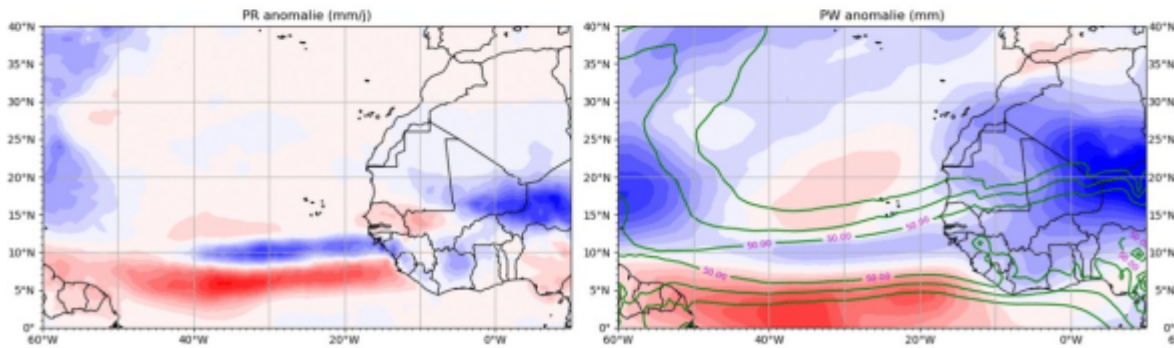
ECMWF EPS
Moyenne hebdomadaire PR et PW Anomalie

S1 init 05-08-2024



ECMWF EPS
Moyenne hebdomadaire PR et PW Anomalie

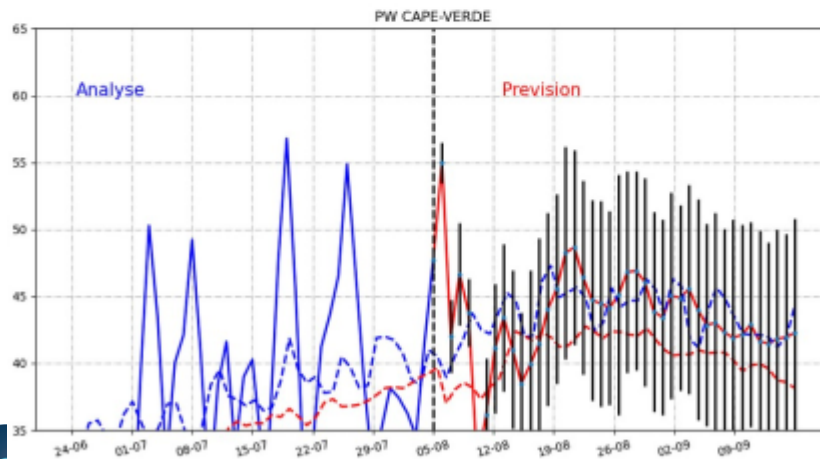
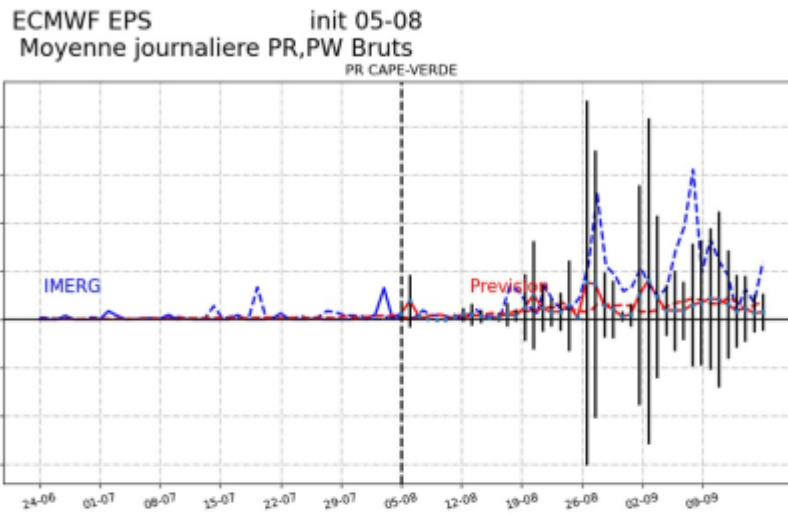
S2 init 05-08-2024



ECMWF EPS

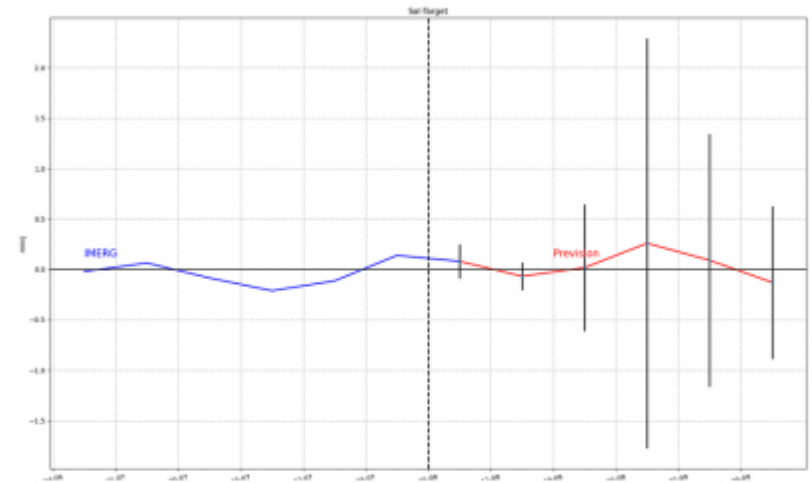
S3 init 05-08-2024

journalier

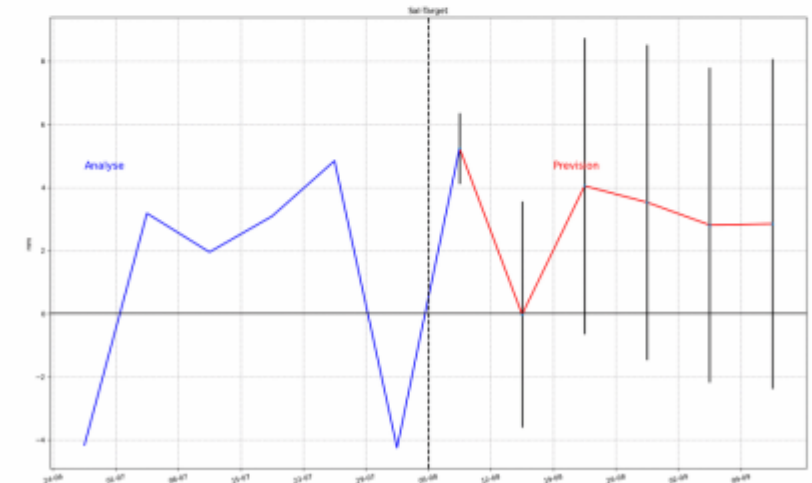


hebdomadaire

ECMWF EPS
Moyenne hebdomadaire PR Anomalie
init 05-08



ECMWF EPS
Moyenne hebdomadaire PW Anomalie
init 05-08



-
- PW : 30 mm
 - Vt 700 hPa : 15-18 m/s, NE
 - Vt 925 hPa : 10-12 m/s , N – NE
 - Subsident en omega 500 hPa
 - Type nuage : shallow, nuage possible glace pour $z > 5000\text{m}$
 - Base nuage ~ 300m – Sommet nuage : 750 m
 -
 - \Rightarrow globalement c'est sec. S'humidifie de dimanche apres-midi à lundi.