



# Briefing monday 12th august

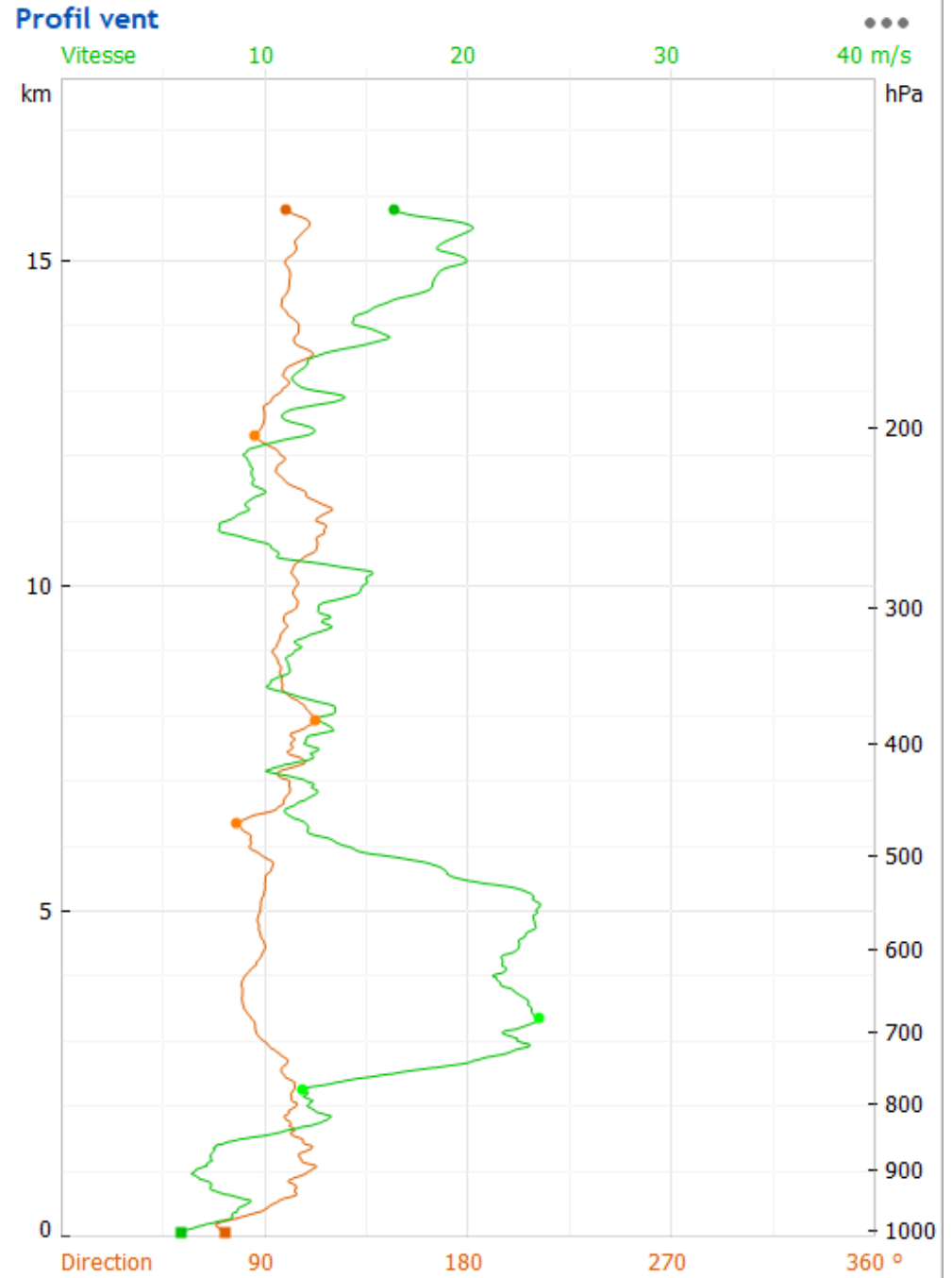
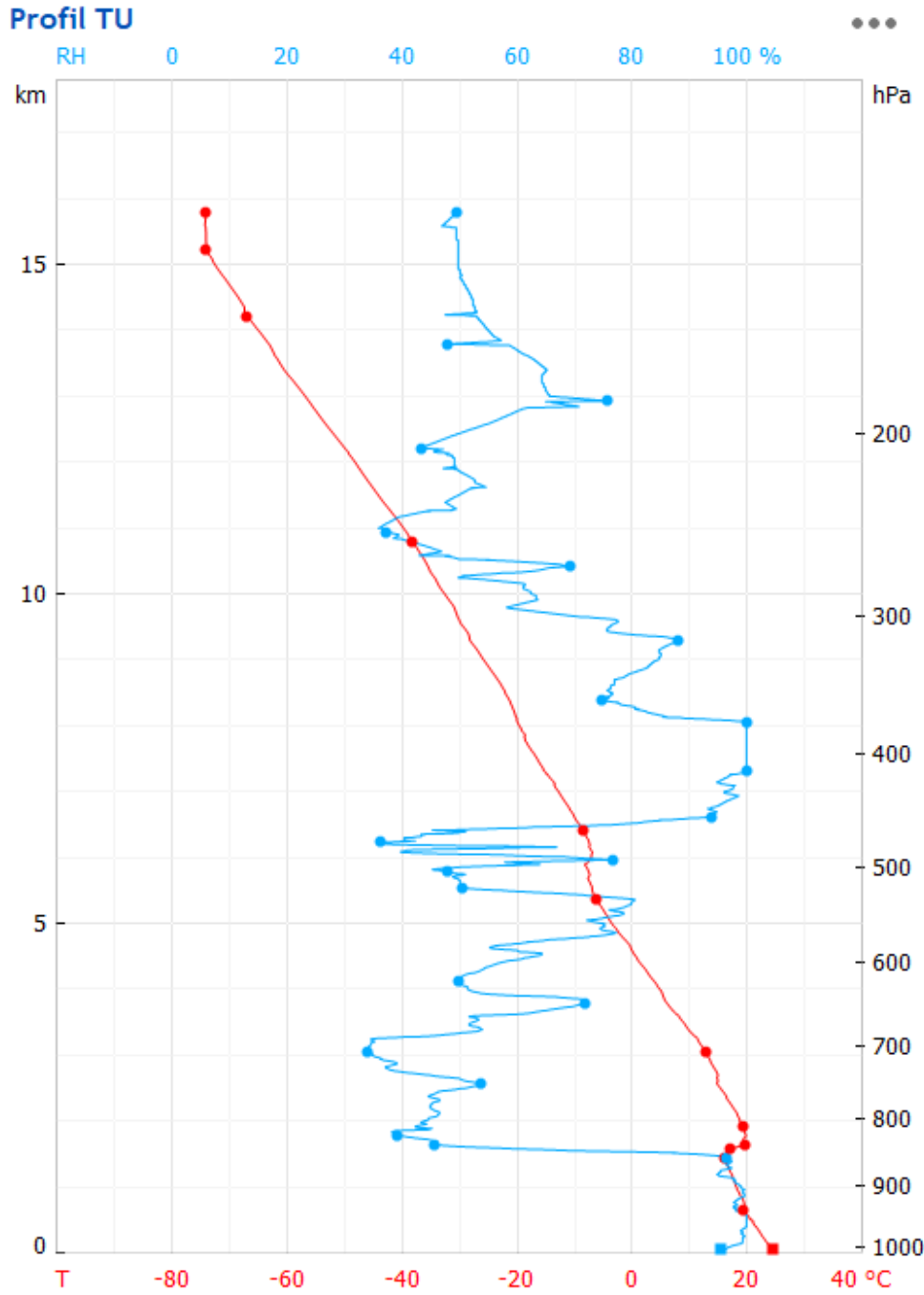
---



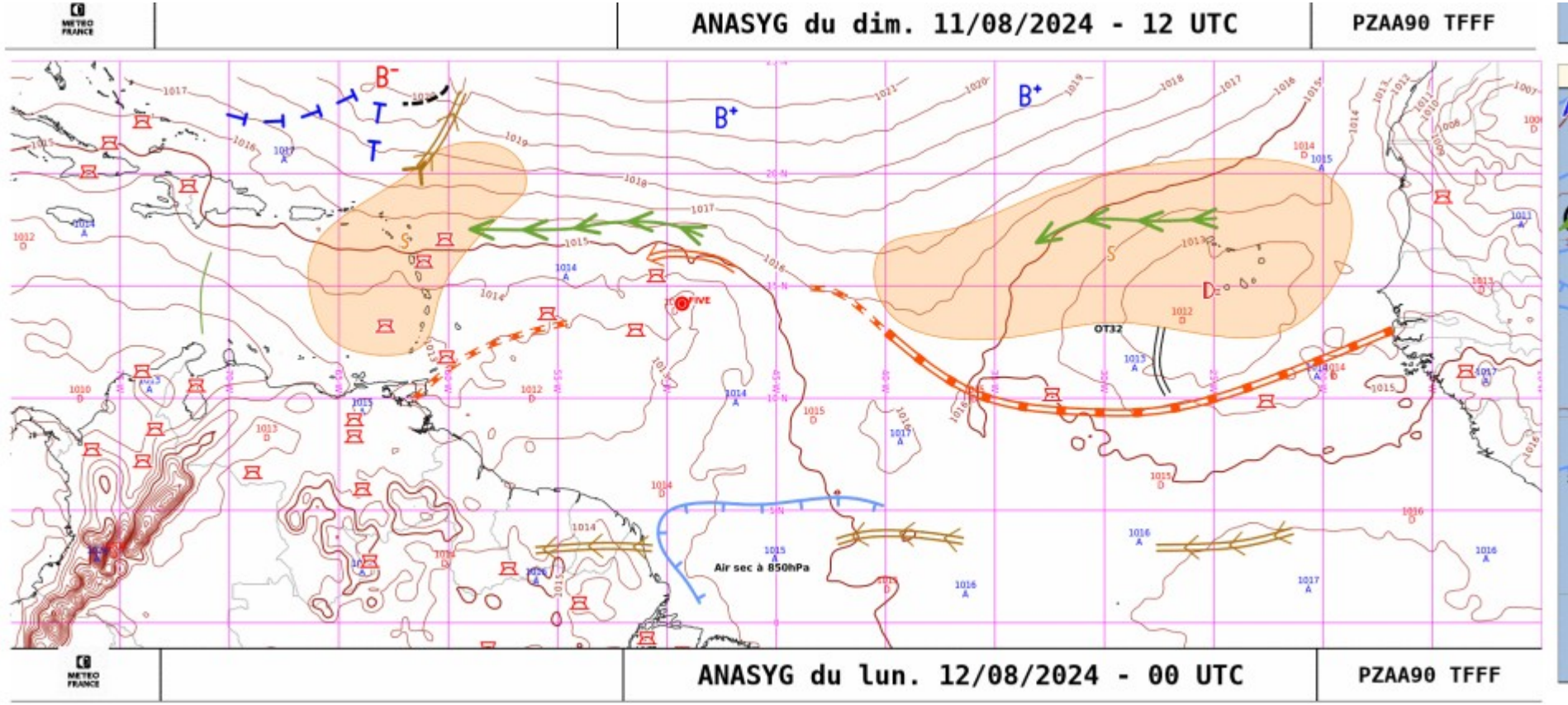
# 1) ANALYSIS et OBSERVATIONS

---

# Radiosounding 12 aout 06 UTC : Emilie and Phil



# ANALYSIS : ANASYG



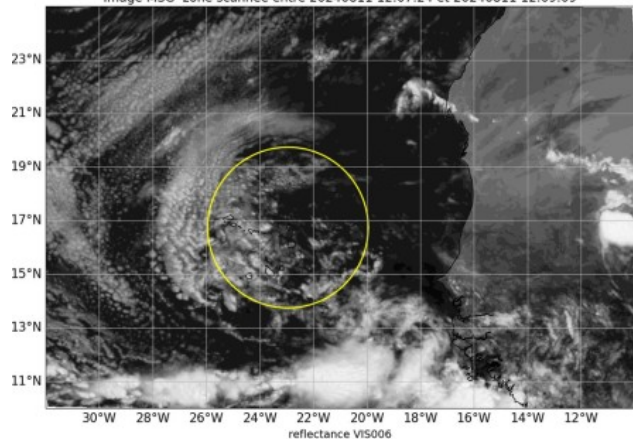


# Image sat (left) vs AROME (center and right)

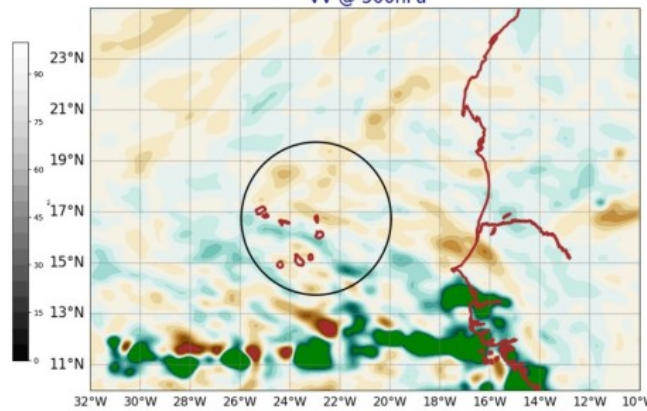
1st line : 10 aug. 12 UTC

2 nd line : 10 aug. 15 UTC

Image MSG zone scannée entre 20240811 12:07:24 et 20240811 12:09:09



AROME25 20240811-12-UTC -ech(12h)  
VV @ 500hPa



AROME25 20240811-12-UTC -ech(12h)  
IWP+LWP

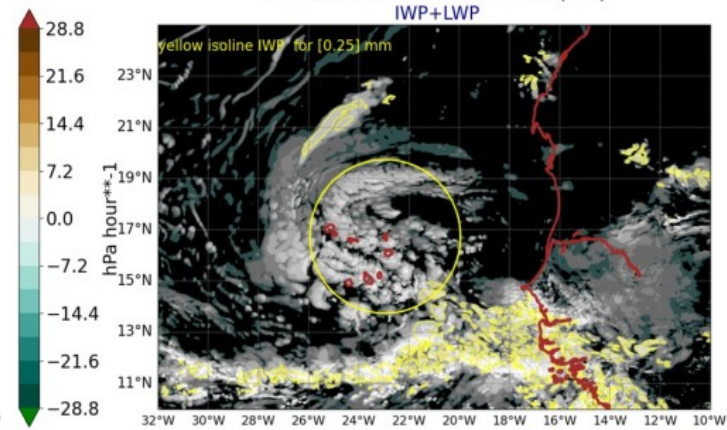
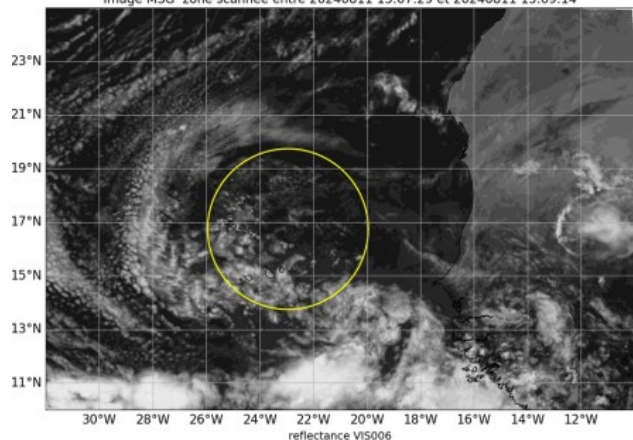
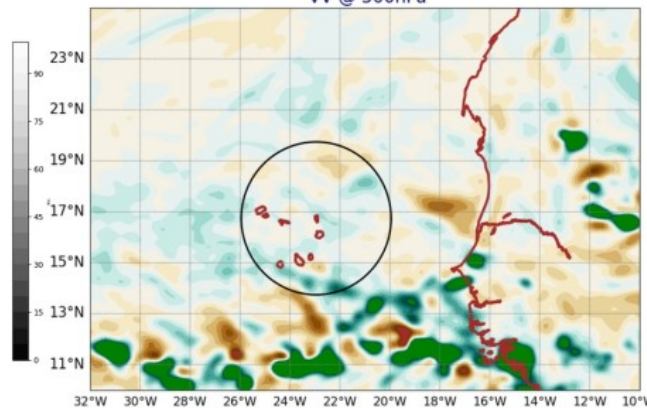


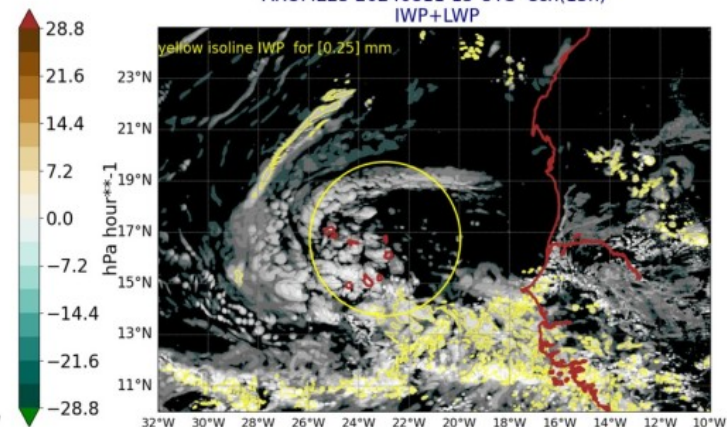
Image MSG zone scannée entre 20240811 15:07:29 et 20240811 15:09:14



AROME25 20240811-15-UTC -ech(15h)  
VV @ 500hPa



AROME25 20240811-15-UTC -ech(15h)  
IWP+LWP



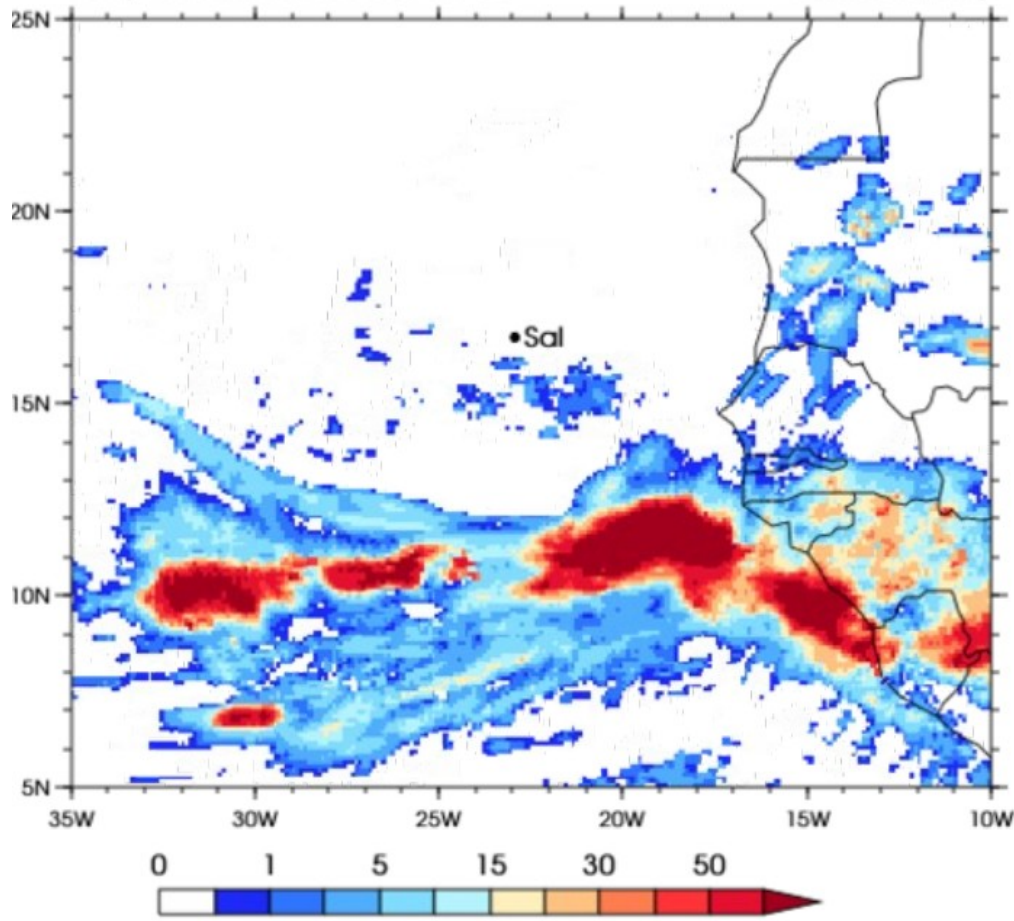


## Precipitation IMERG and AROME J-1

3IMERGHHE GPM IMERG Early Precipitation

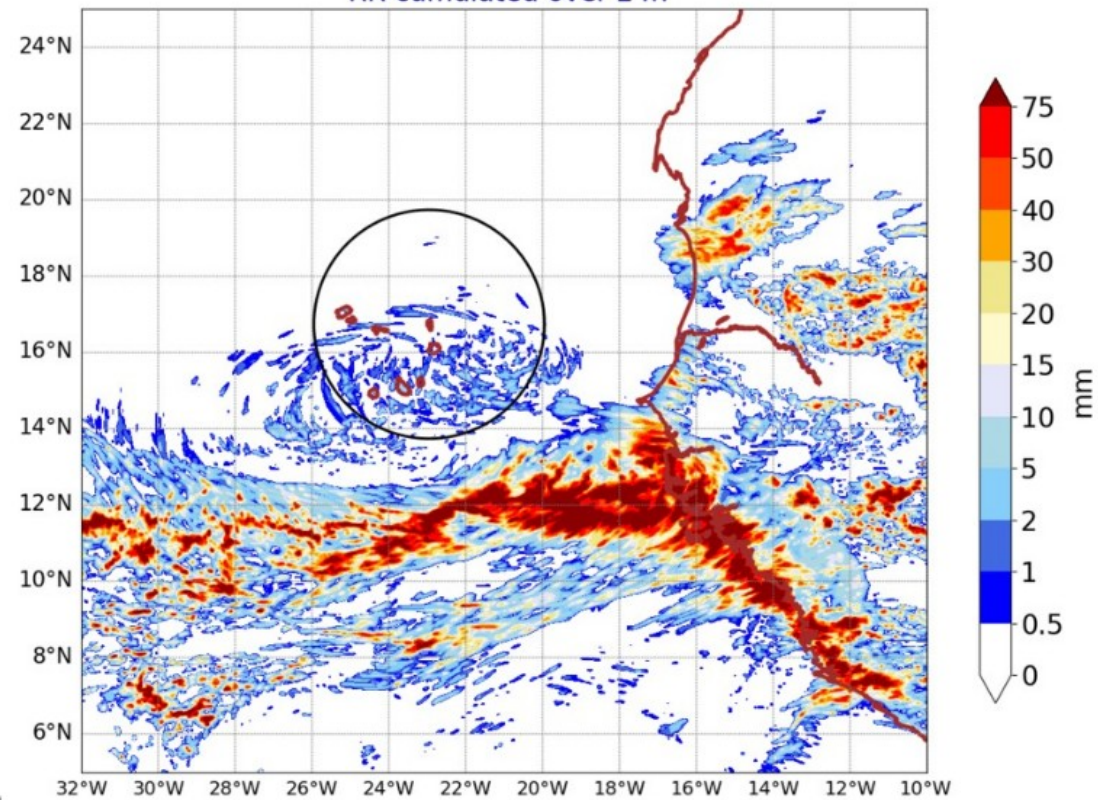
Daily accumulated: 2024-08-11

Units: mm/day

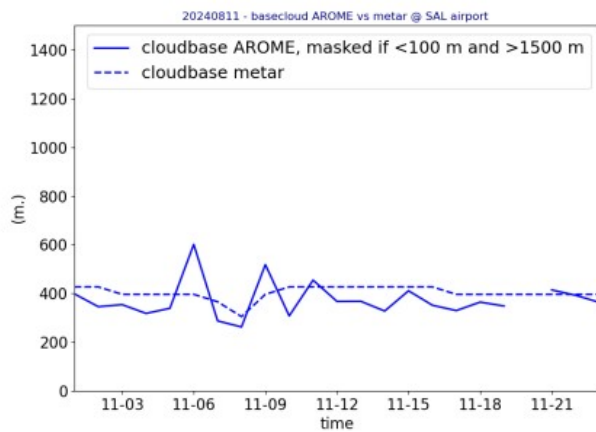
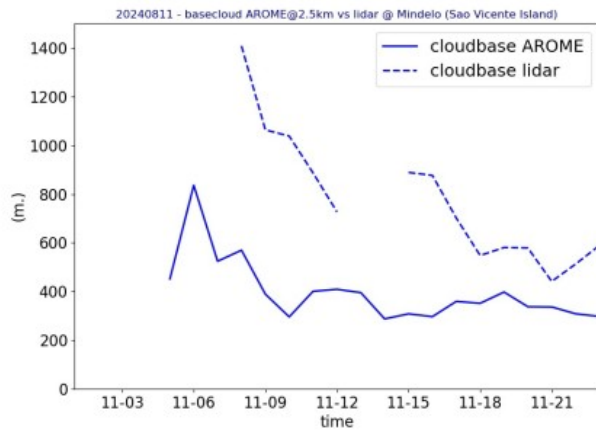


AROME25 20240812-00-UTC -ech(24h)

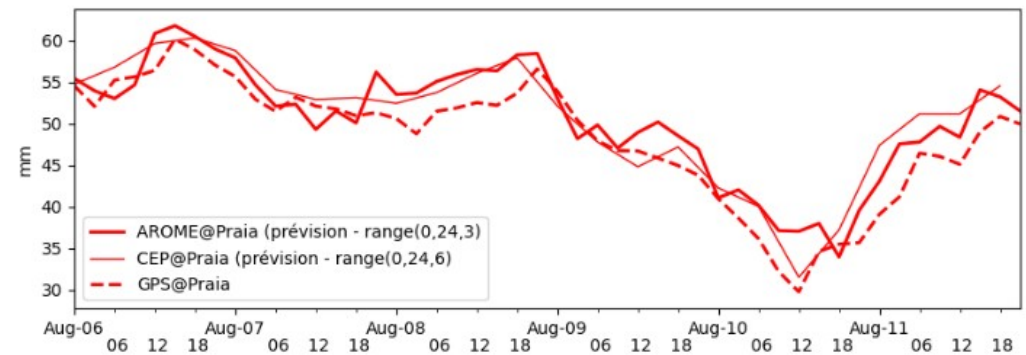
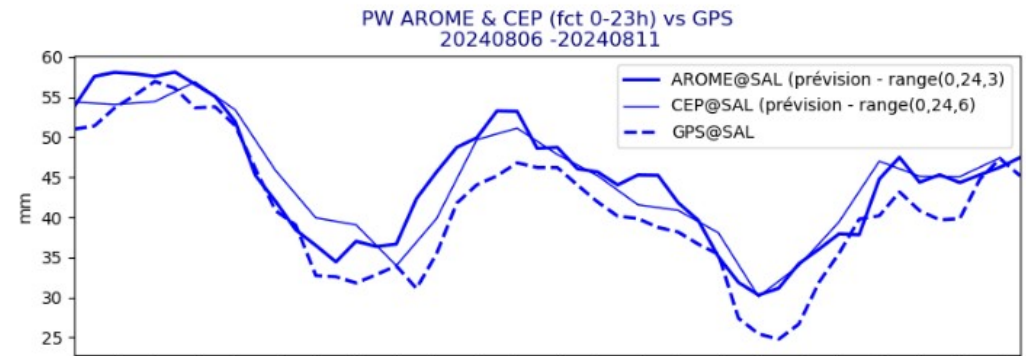
RR cumulated over 24h



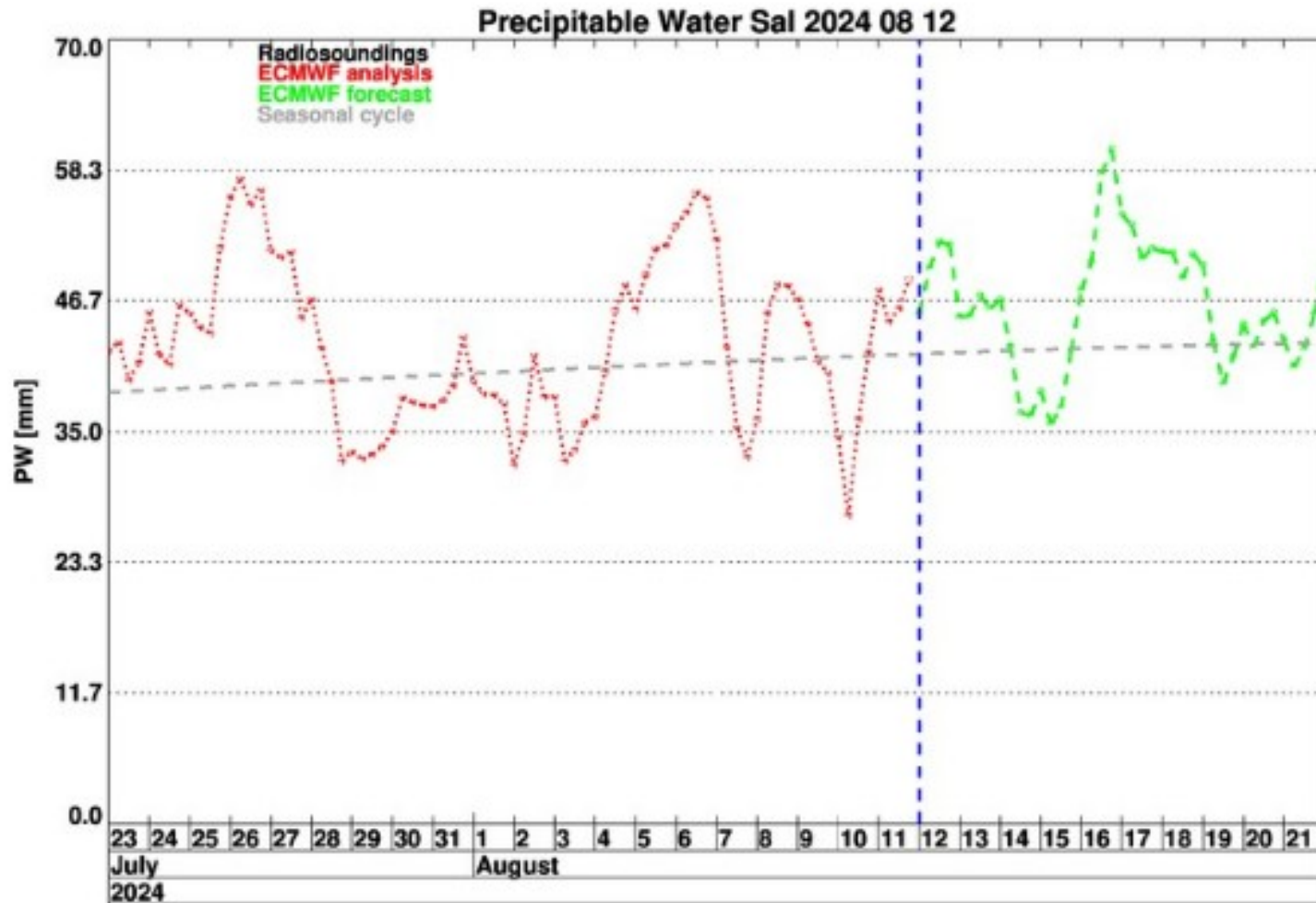
## Lidar@ mindelo metar@sal



## GPS @ Sal GPS @ Praia



# PW at SAL : analysis and forecast







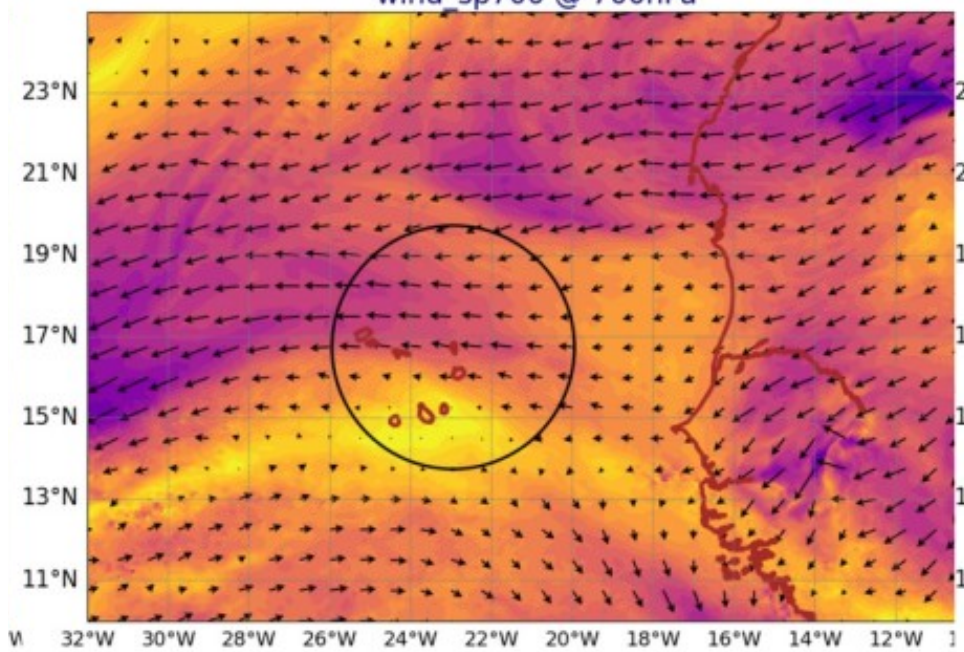
## 2) FORECAST

---

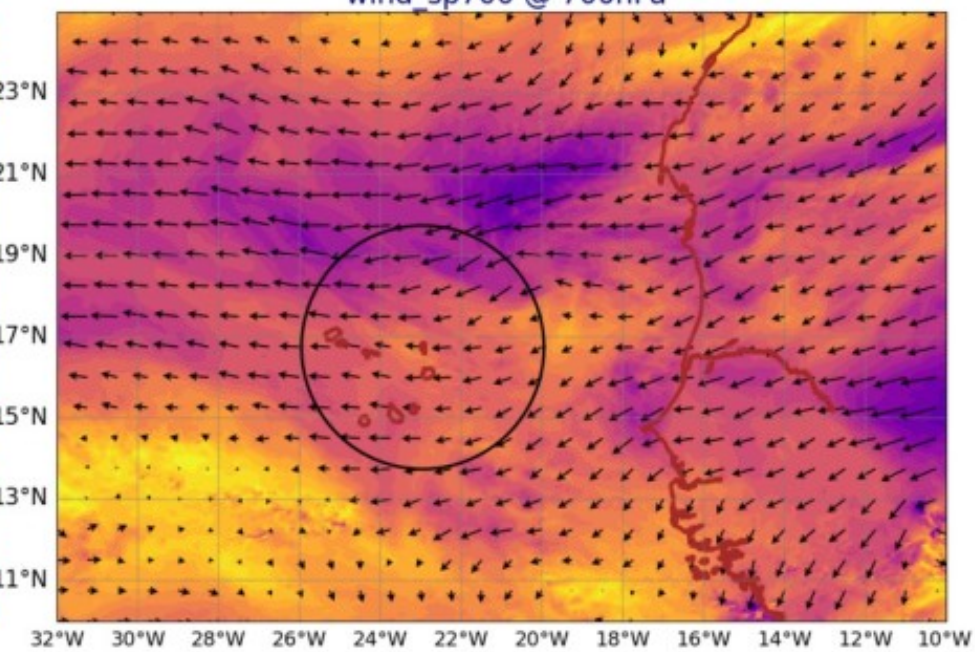
# AROME Wind @ 700 hPa

## AROME Wind @ 920 hPa

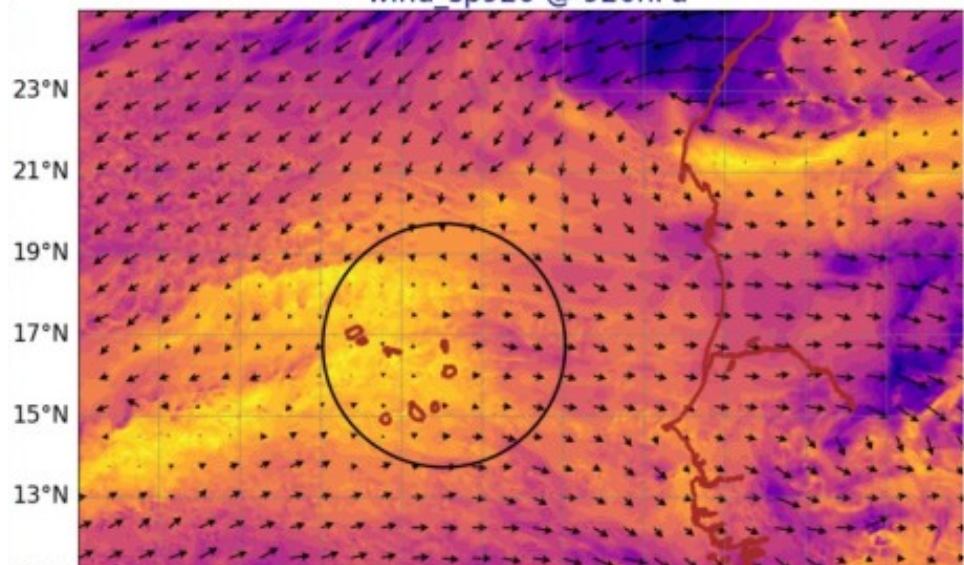
AROME25 20240813-12-UTC -ech(36h)  
wind\_sp700 @ 700hPa



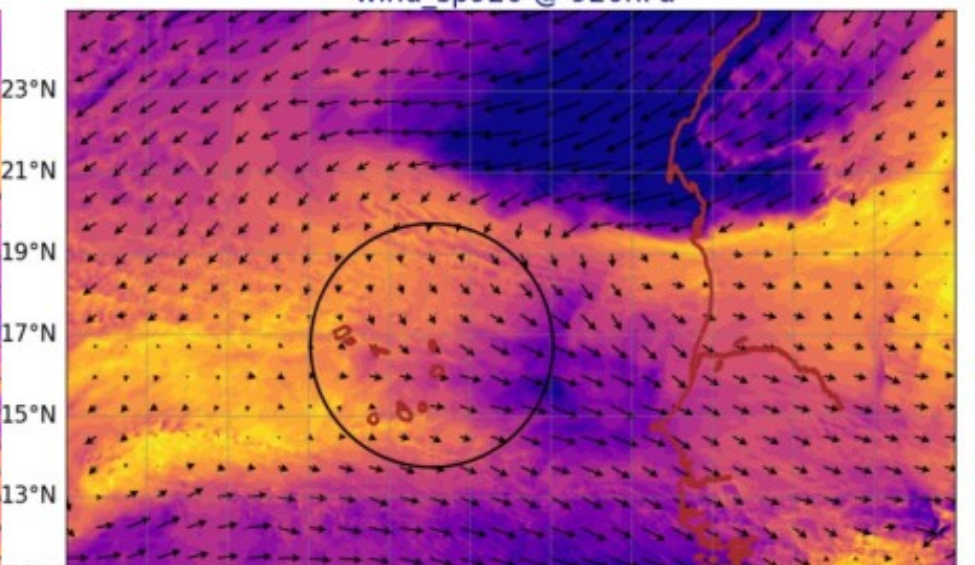
AROME25 20240814-12-UTC -ech(60h)  
wind\_sp700 @ 700hPa



AROME25 20240813-12-UTC -ech(36h)  
wind\_sp920 @ 920hPa



AROME25 20240814-12-UTC -ech(60h)  
wind\_sp920 @ 920hPa





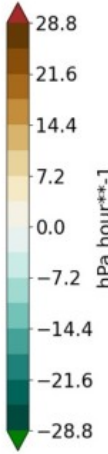
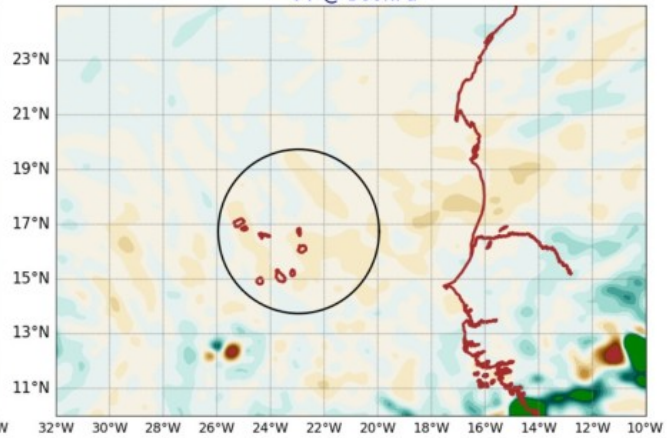
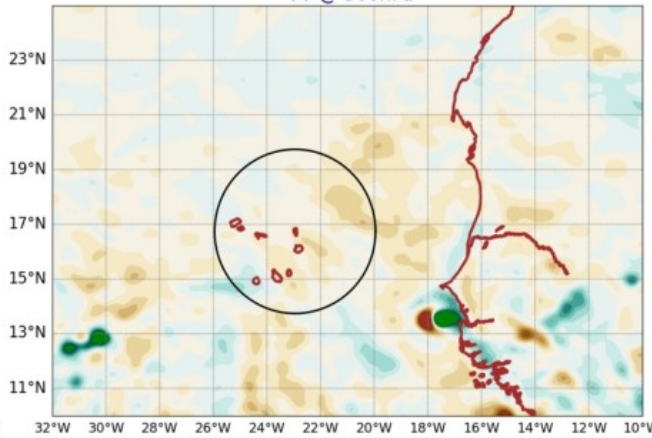
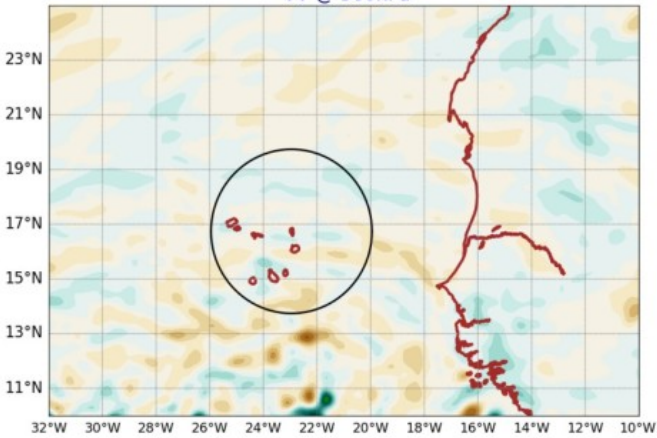
# AROME VV @ 500hPa

## AROME LWP+IWP

AROME25 20240812-12-UTC -ech(12h)  
VV @ 500hPa

AROME25 20240813-12-UTC -ech(36h)  
VV @ 500hPa

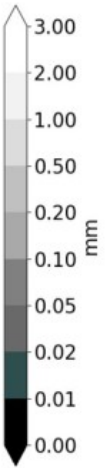
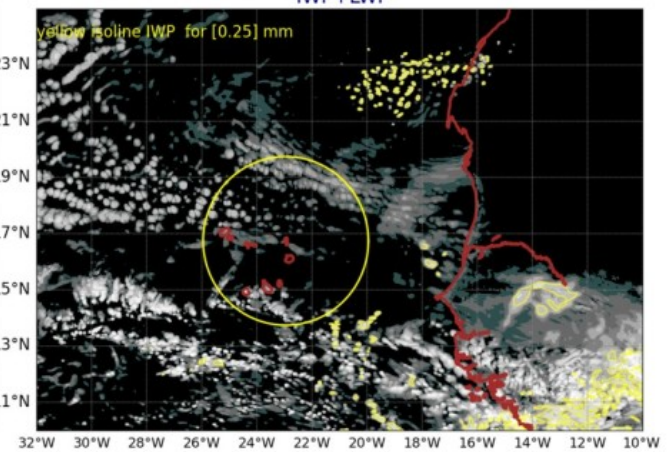
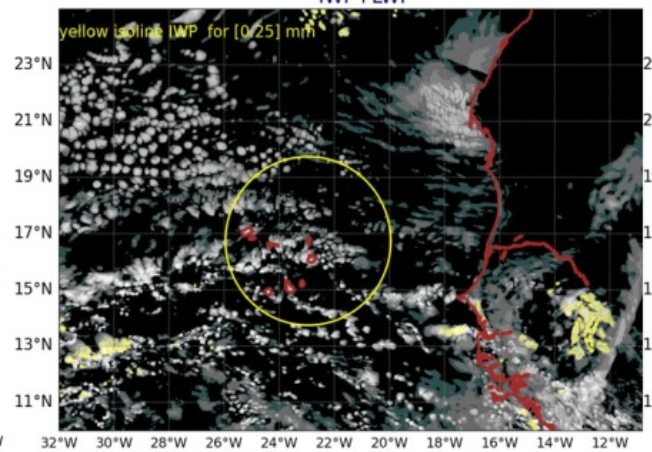
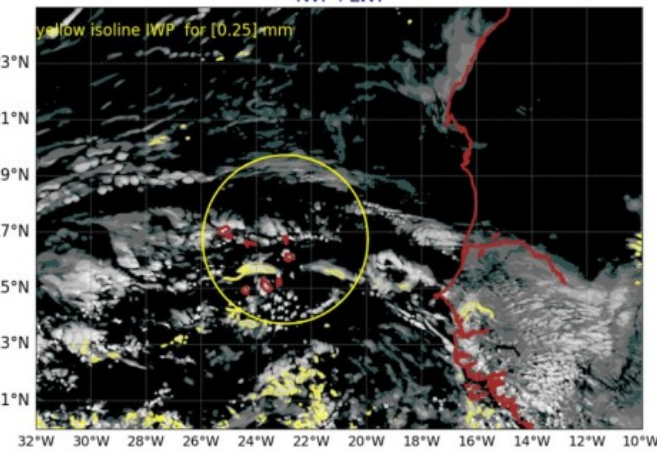
AROME25 20240814-12-UTC -ech(60h)  
VV @ 500hPa



AROME25 20240812-12-UTC -ech(12h)  
IWP+LWP

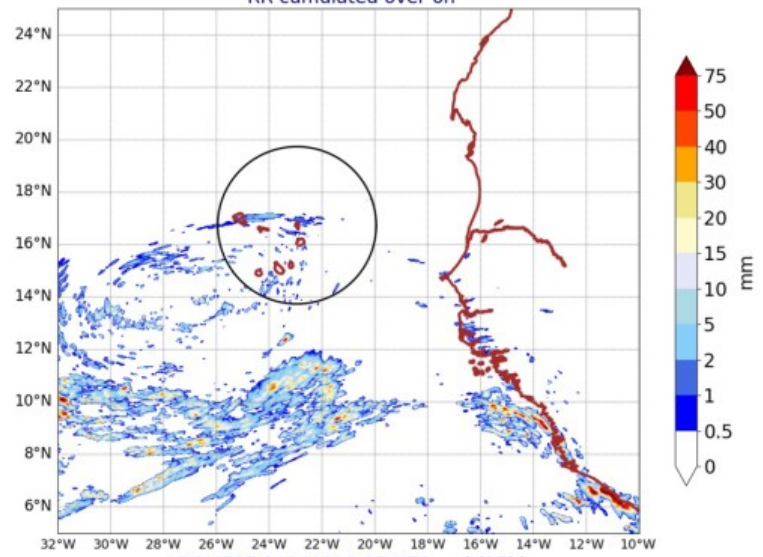
AROME25 20240813-12-UTC -ech(36h)  
IWP+LWP

AROME25 20240814-12-UTC -ech(60h)  
IWP+LWP

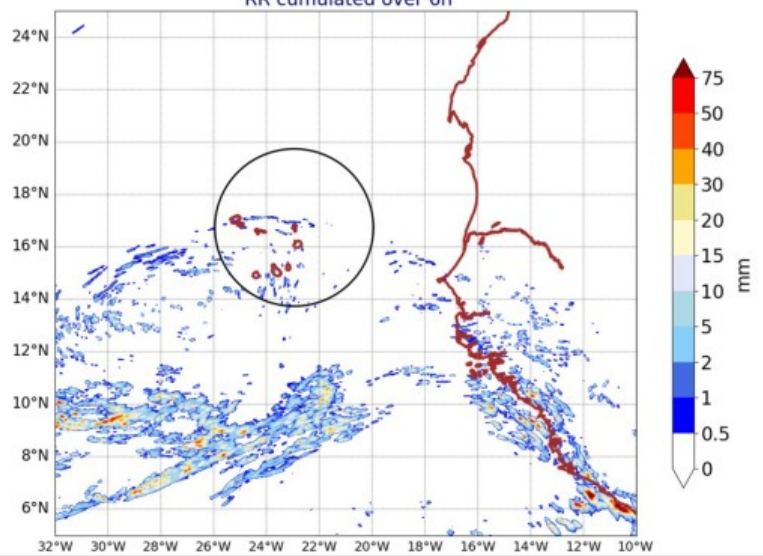




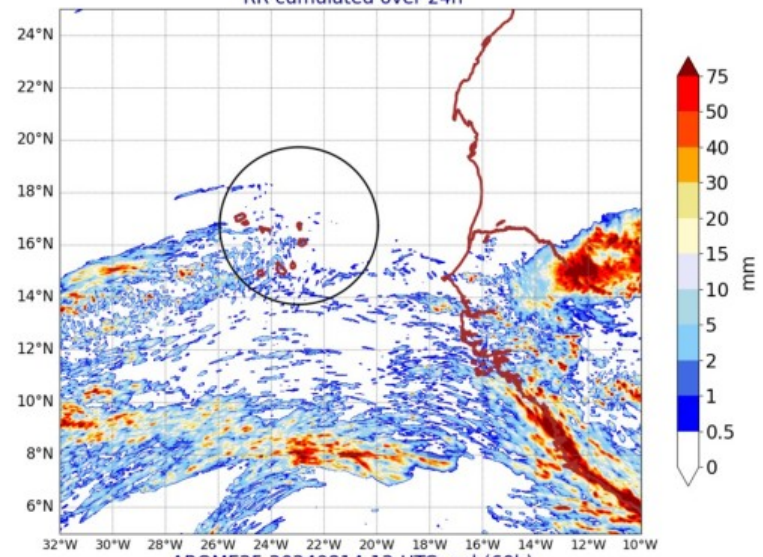
AROME25 20240812-12-UTC -ech(12h)  
RR cumulated over 6h



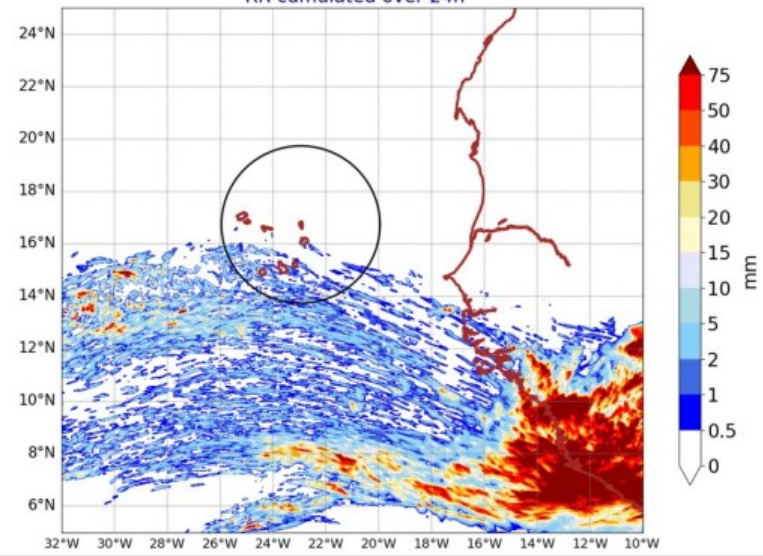
AROME25 20240812-15-UTC -ech(15h)  
RR cumulated over 6h



AROME25 20240813-12-UTC -ech(36h)  
RR cumulated over 24h

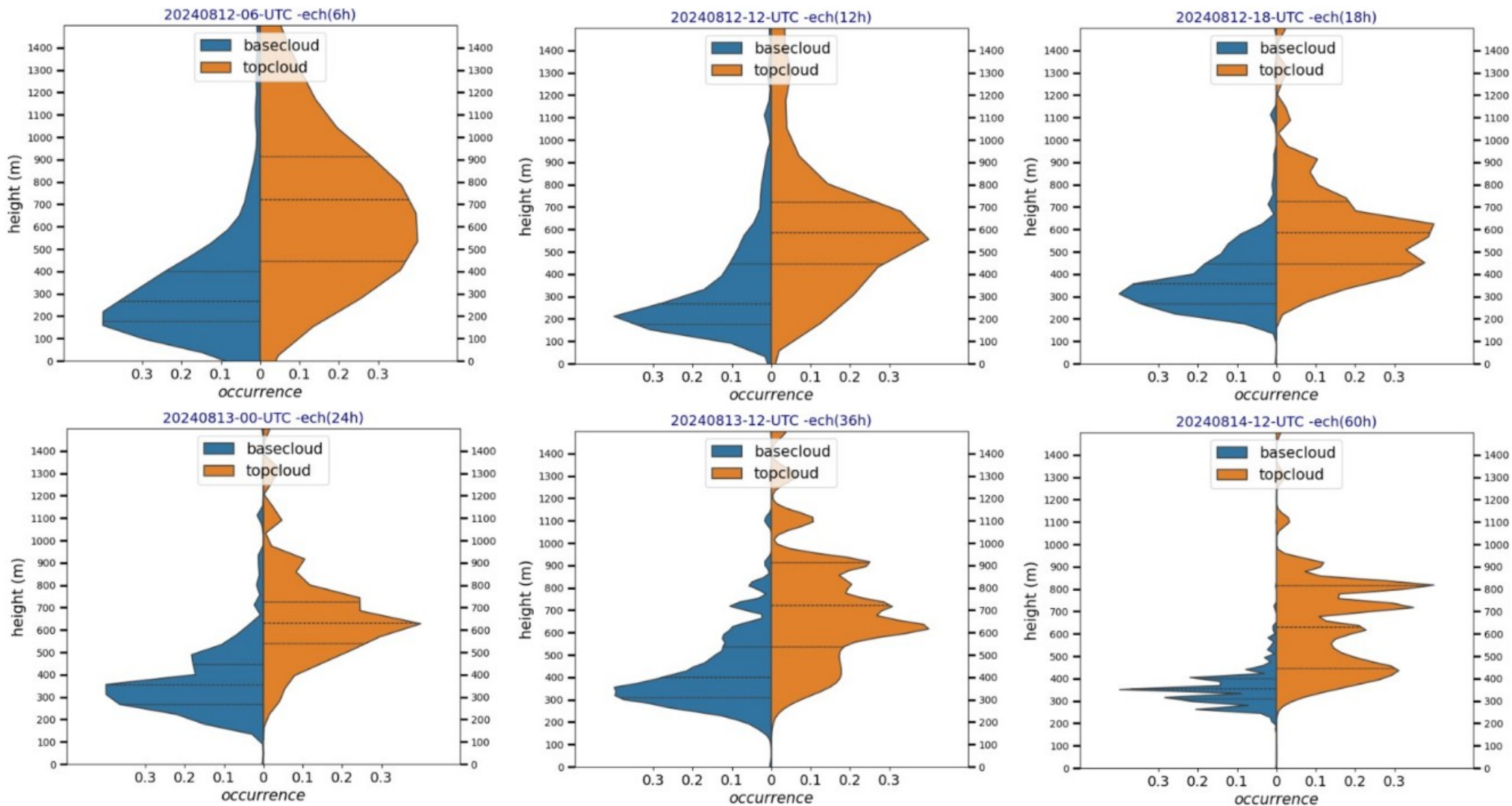


AROME25 20240814-12-UTC -ech(60h)  
RR cumulated over 24h



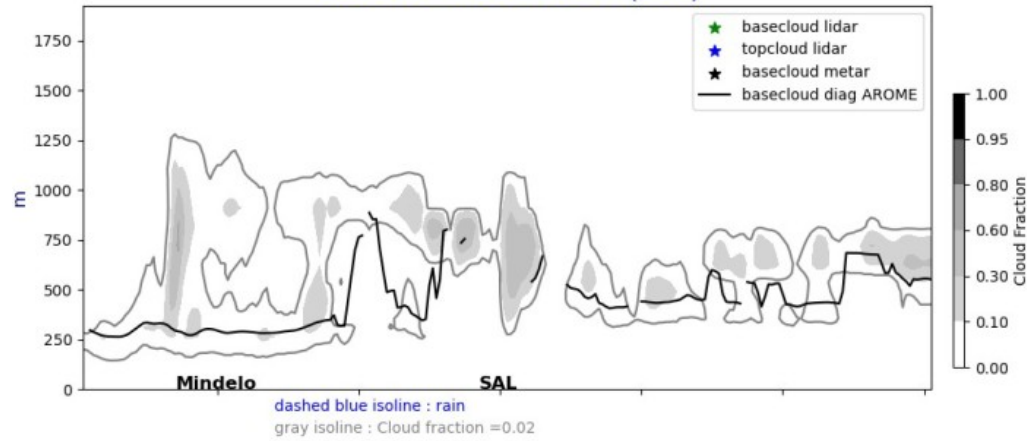


# AROME base and top cloud (mean in the 3° circle)

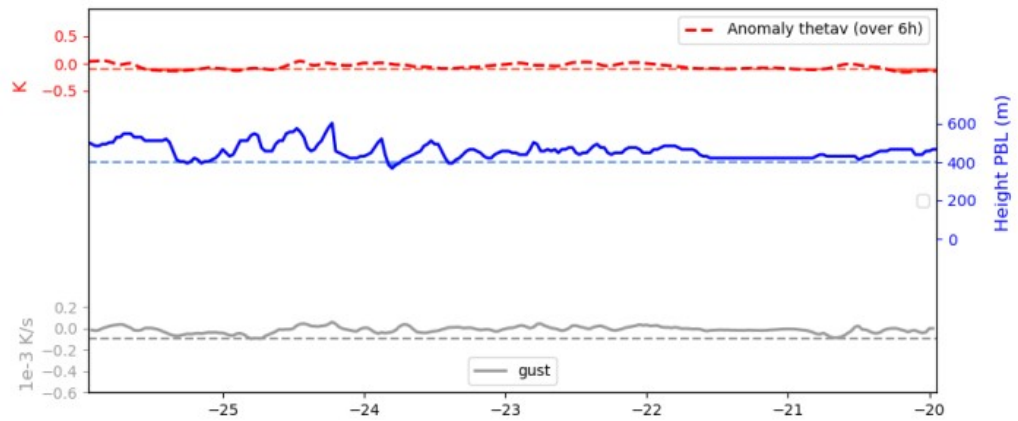
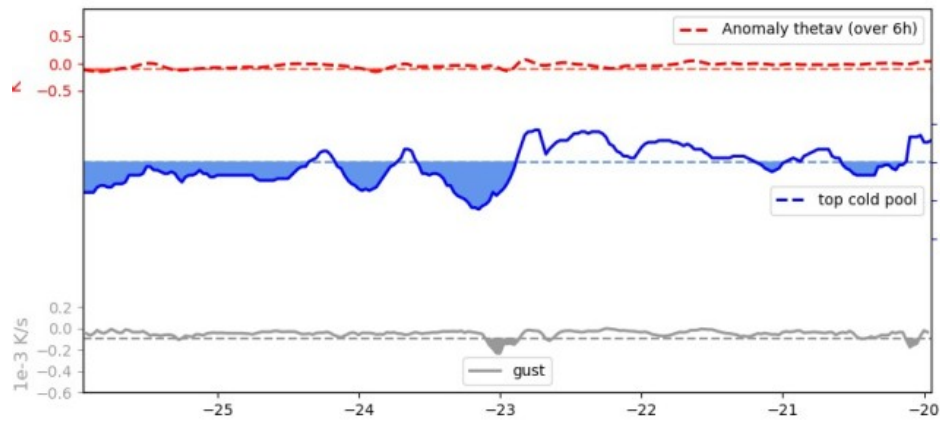
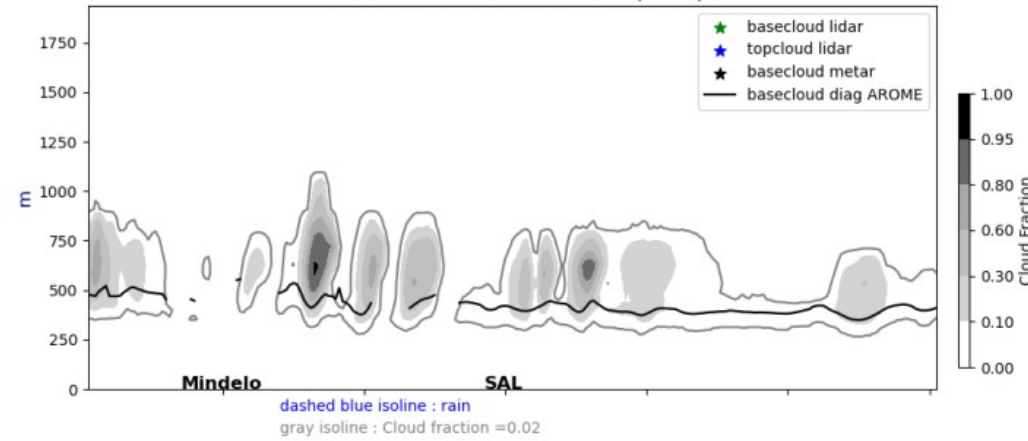


# Lat. cross section @17°5N fct : J+1 and J+2 @ 12UTC

Cross section E/W @ 17.5N  
20240813-12-UTC ech(36h)

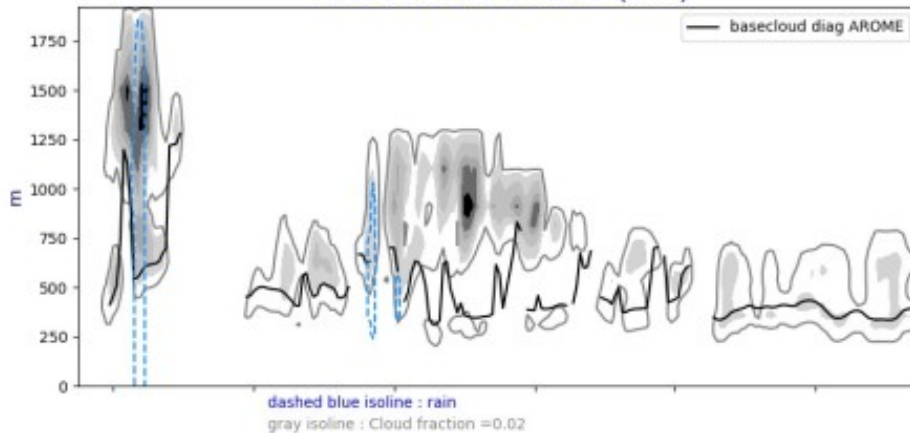


Cross section E/W @ 17.5N  
20240814-12-UTC ech(60h)

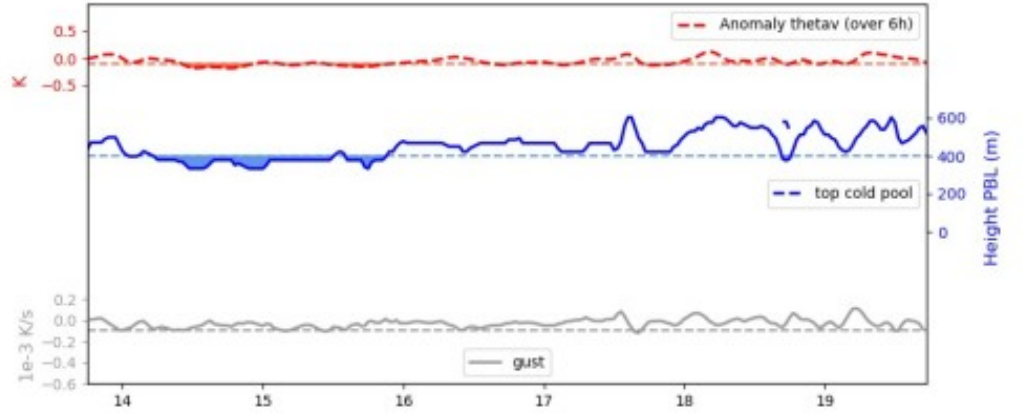
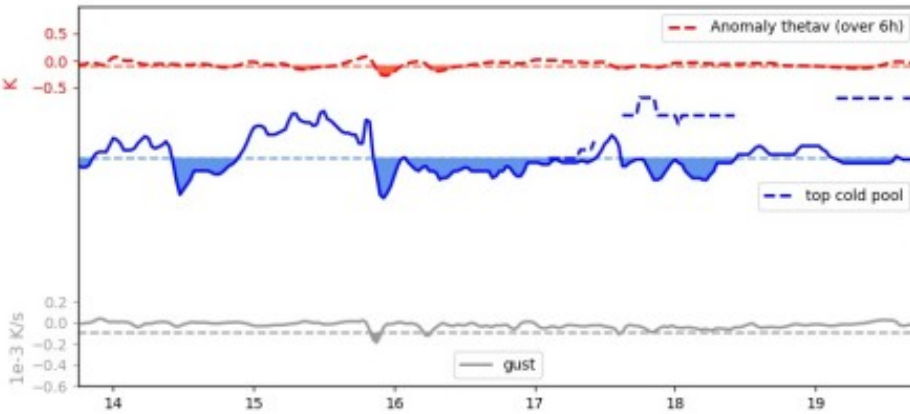
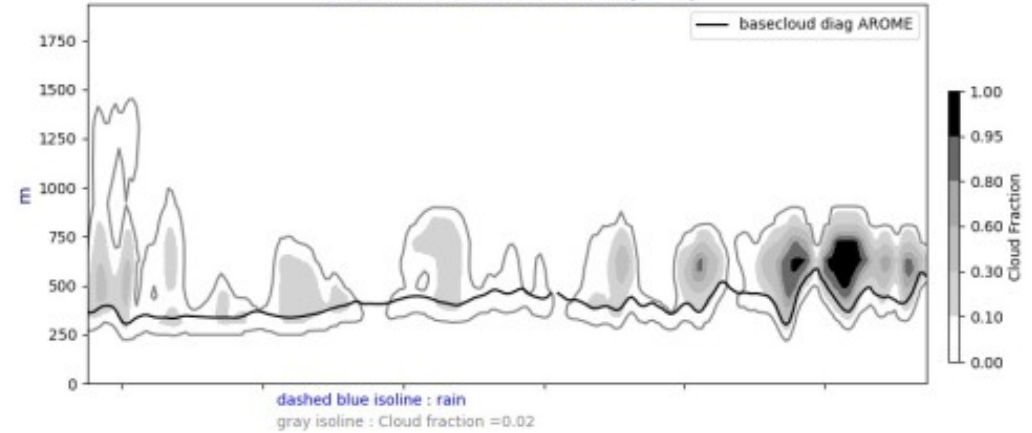


# Longitude cross section @ 22W @ J+1 and J+2 12UTC

Cross section S/N @ -22W  
20240813-12-UTC ech(36h)

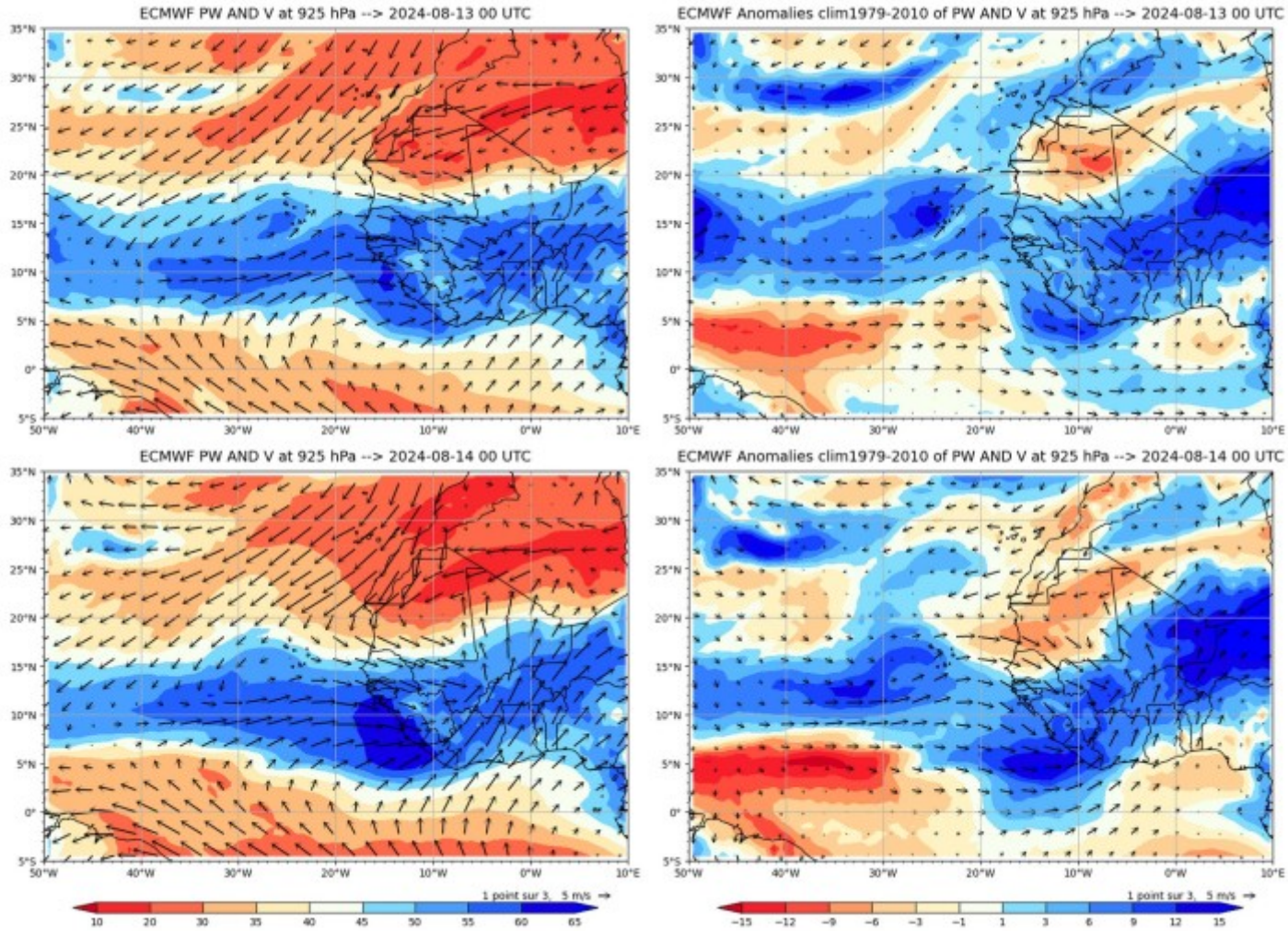


Cross section S/N @ -22W  
20240814-12-UTC ech(60h)





# PW and WIND at 925 hPa





# SUMMARY for tomorrow tuesday

---

PW = tuesday 46 mm and wednesday : 36 mm

Wind @ 920 hPa : light Westerly wind 2 m/s

Wind @ 700 hPa : Easterly 9 m/s (quite few)

Base cloud : 300 m

Top cloud : 1between 750 m (north of SAL) and 1250 m (southwards of SAL)

Orga : very shallow convection (1-3 octas)

NO shower

Thanks to everybody !!!