



# Weather Briefing

---

15/ 08 / 2024



# 1) ANALYSIS et OBSERVATIONS

---

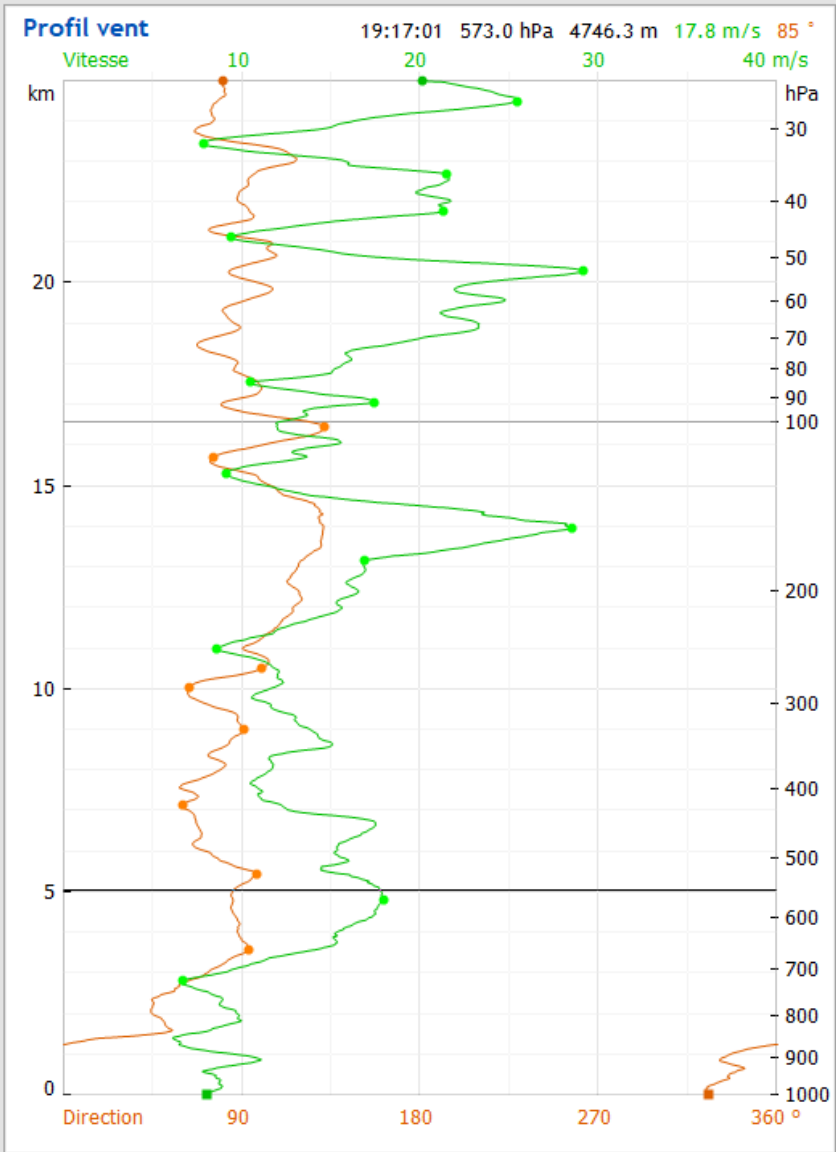
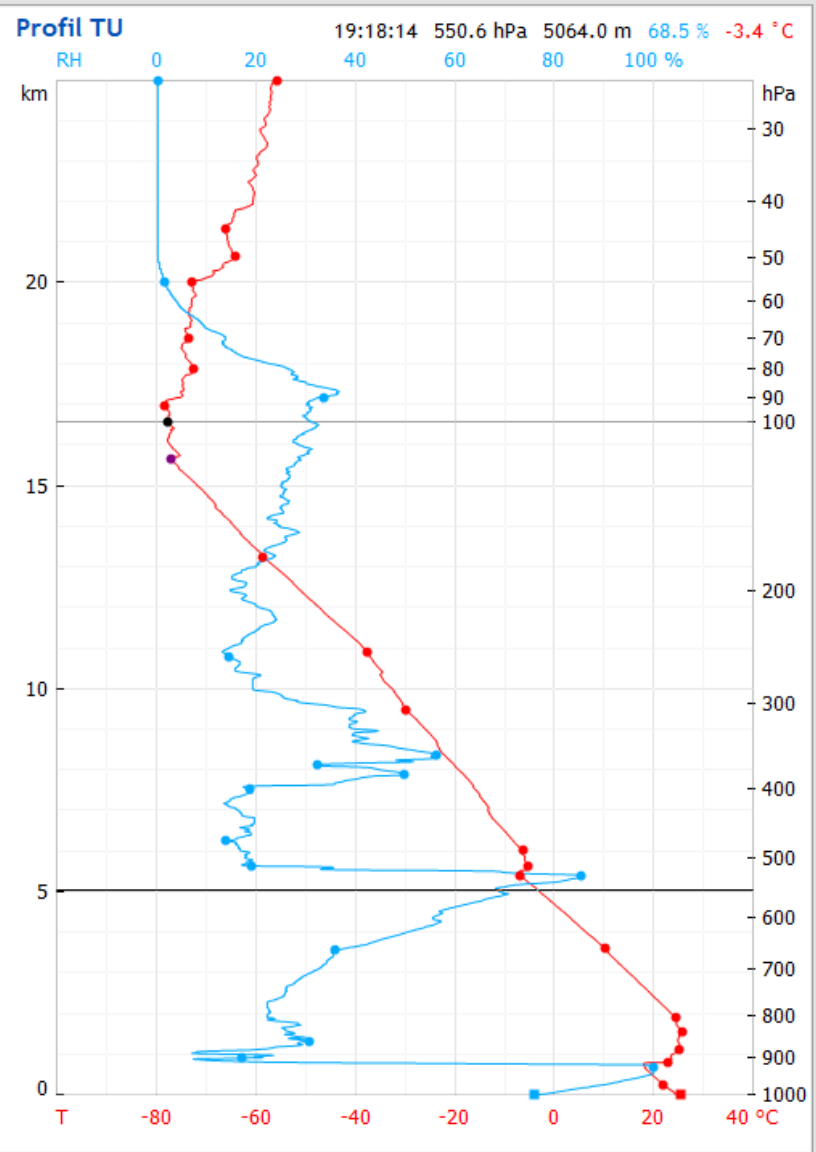


**METEO  
FRANCE**

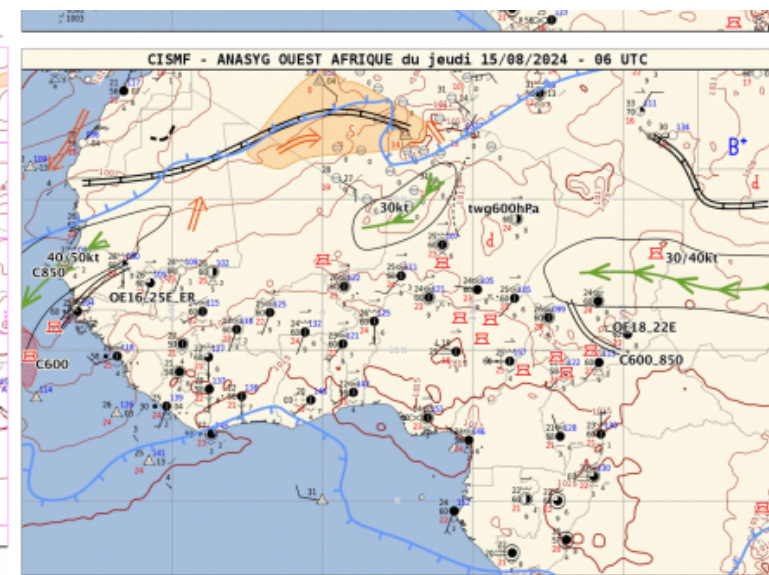
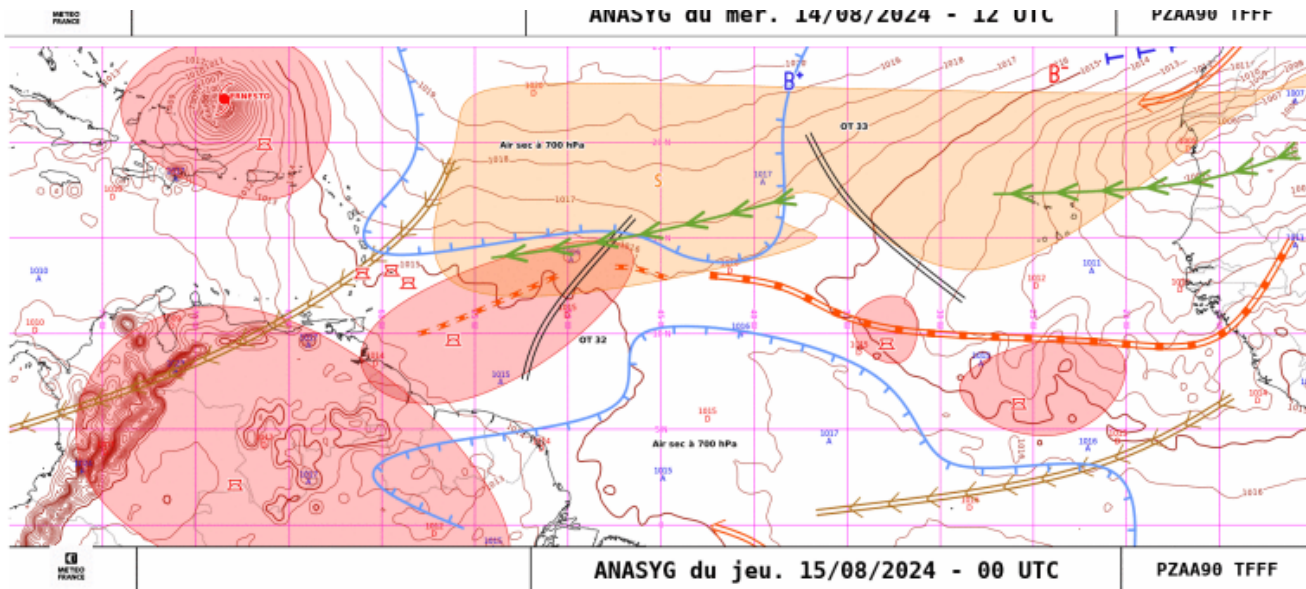


### Descente 14/08/2024 18Z

Altitude 10153 m -14.3 m/s



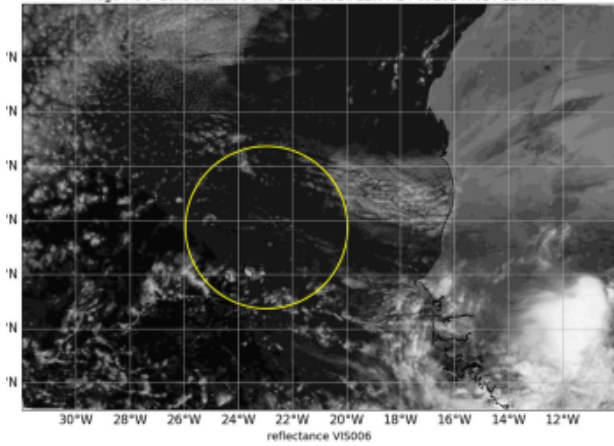
# Synthesis charts



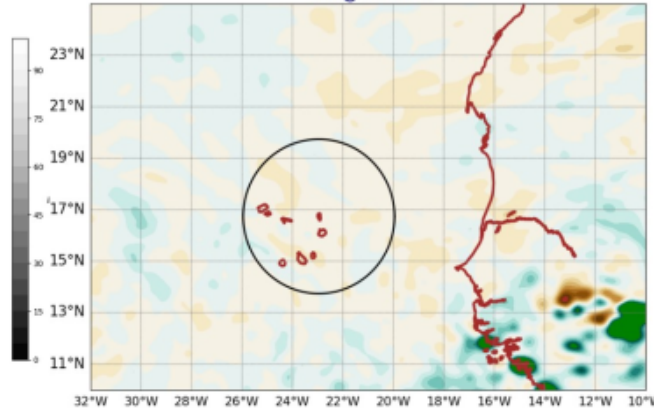
- Easterly wave over Senegal coming over Cape Verde tomorrow
- Still a lot of dust with AEJ
- ITCZ around 10°N
- TC on the western side of the ocean

# Evaluation forecast yesterday

Image MSG zone scannée entre 20240814 12:07:24 et 20240814 12:09:09



AROME25 20240814-12-UTC -ech(12h)  
VV @ 500hPa



AROME25 20240814-12-UTC -ech(12h)  
IWP+LWP

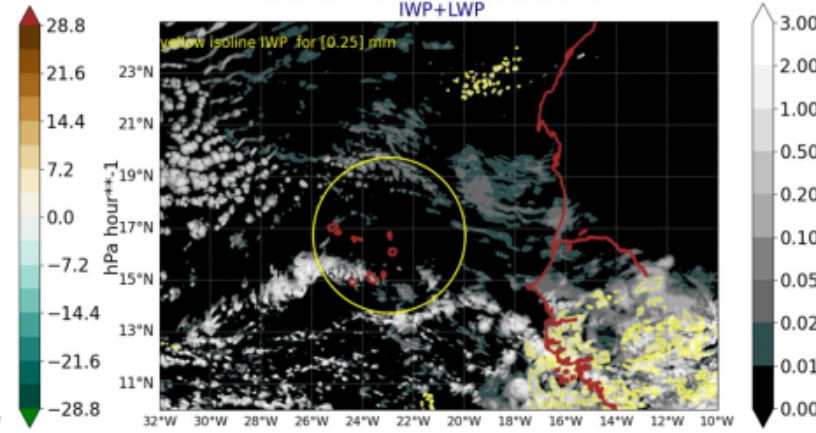
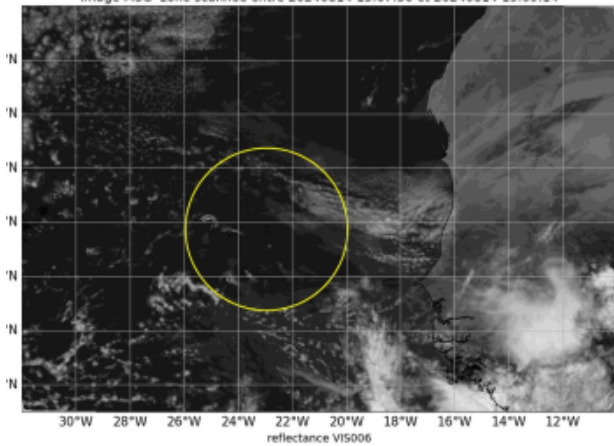
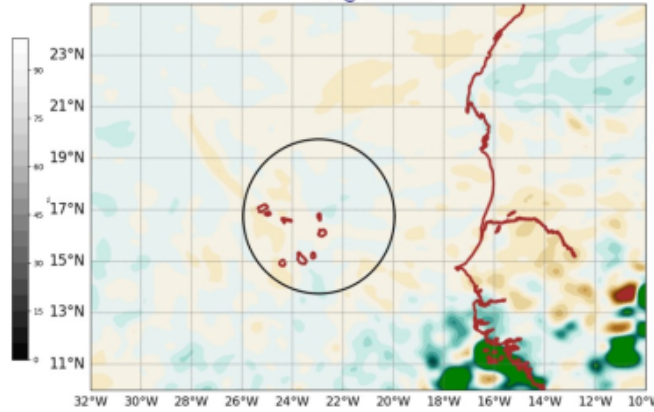


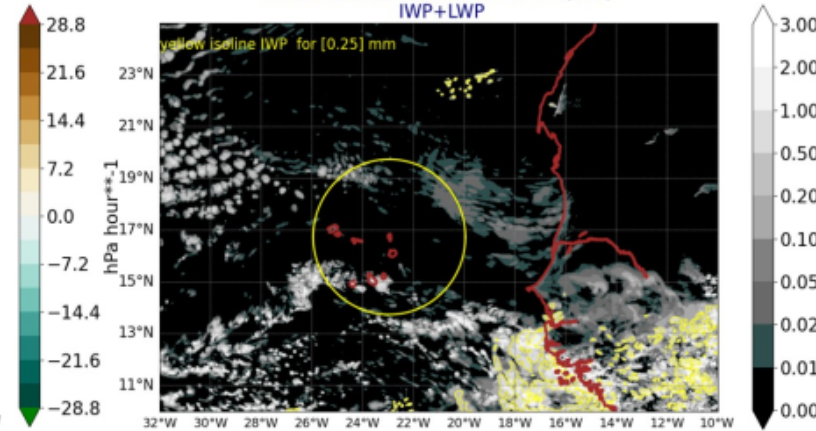
Image MSG zone scannée entre 20240814 15:07:30 et 20240814 15:09:14



AROME25 20240814-15-UTC -ech(15h)  
VV @ 500hPa



AROME25 20240814-15-UTC -ech(15h)  
IWP+LWP

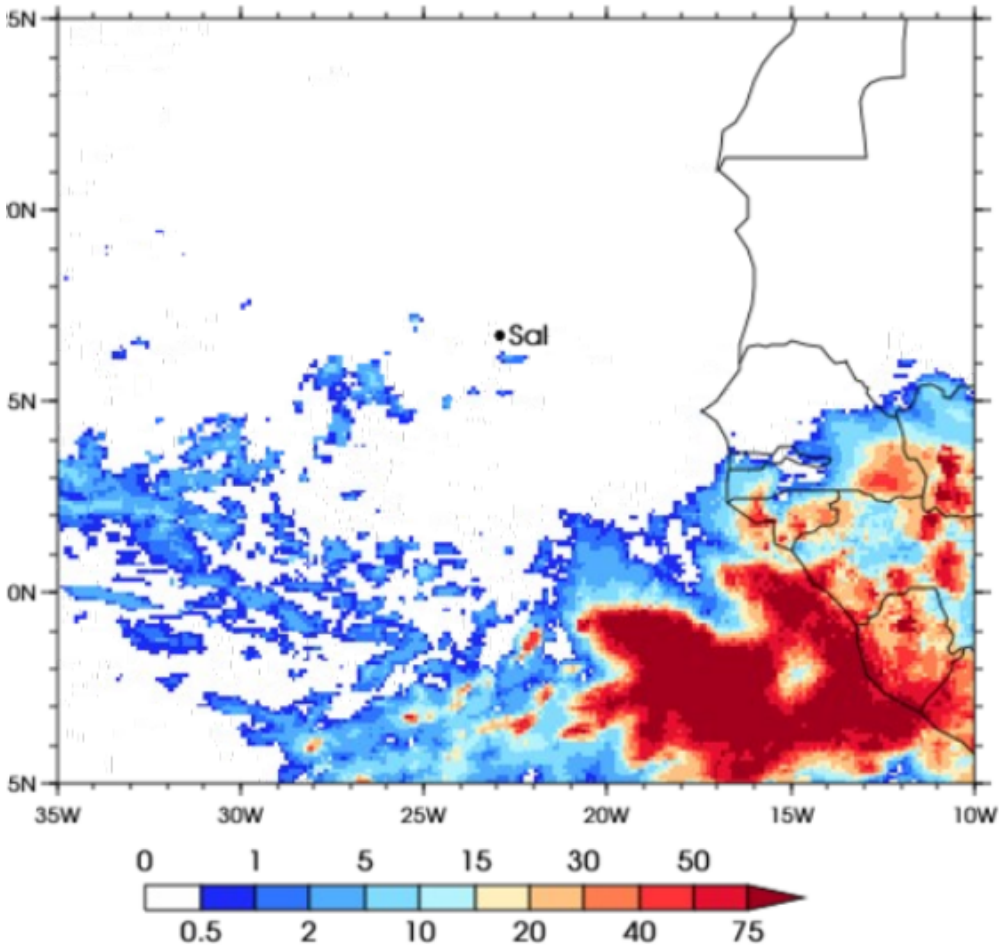


# Evaluation - Rainfall

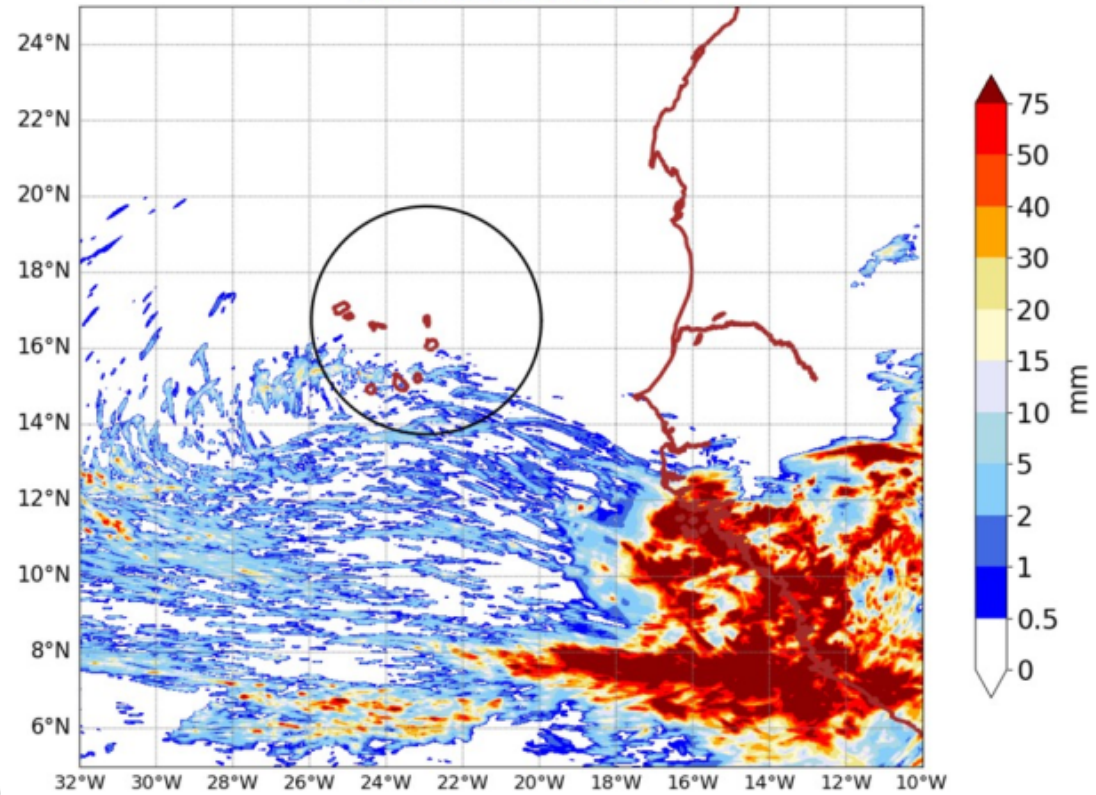
3IMERGHHE GPM IMERG Early Precipitation

Daily accumulated: 2024-08-14

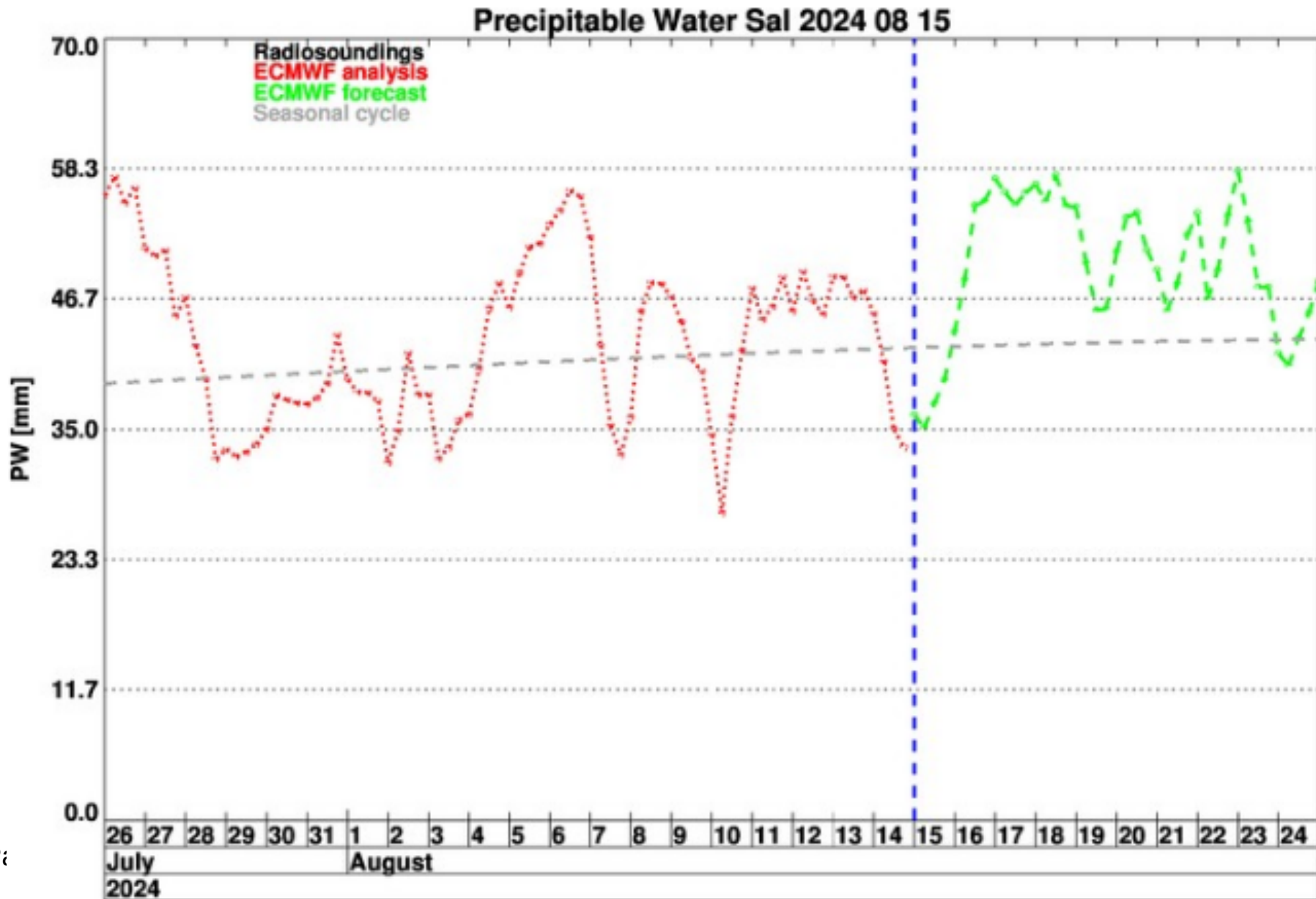
Units: mm/day



AROME25 20240815-00-UTC -ech(24h)  
RR cumulated over 24h



# Precipitable Water at Sal , analysis and forecast





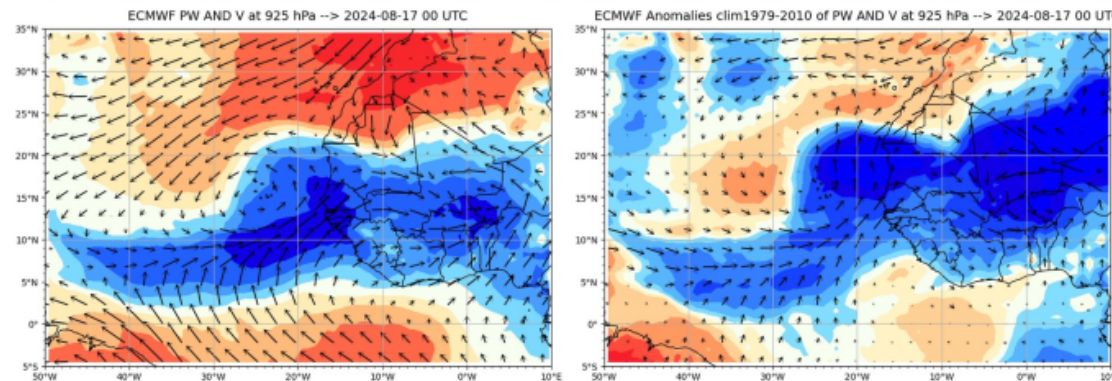
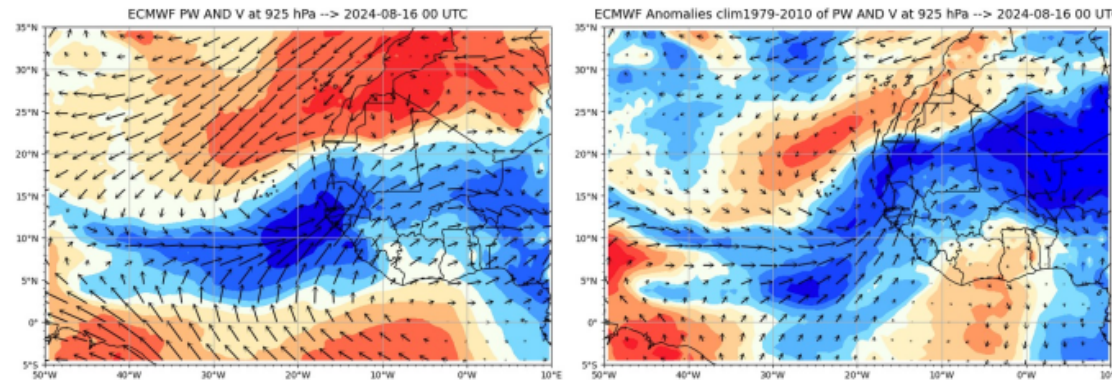
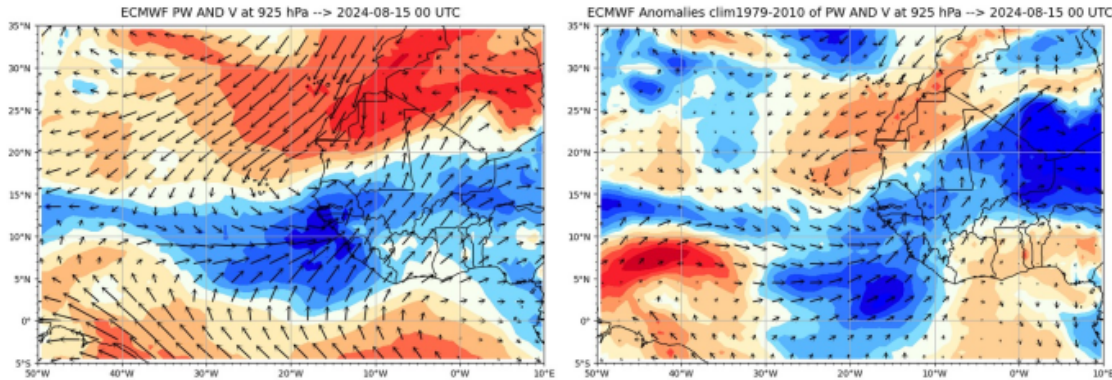
## 2) FORECAST

---



# PW (color) and WIND @ 925 hPa total (left) and anomaly (right)

1st line : J @ 00 UTC, 2nd line : J+1 @ 00 UTC



Today : zonal gradient dry → wet going to the east  
Northearlies over Sal

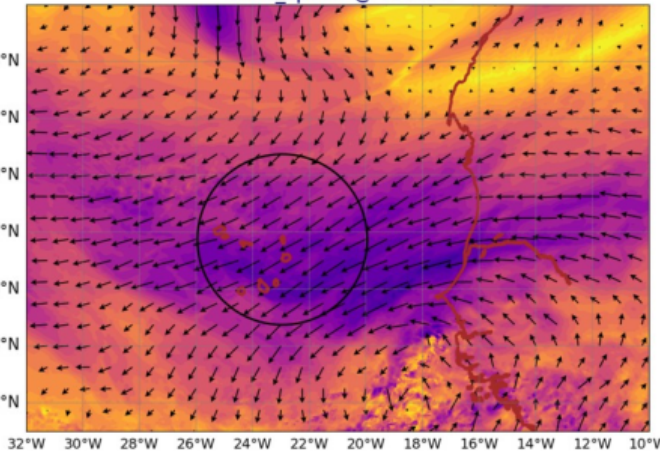
Tomorrow : shift from dry to wet  
, stronger gradient

Day +2 : Moist phase ,  
southerlies

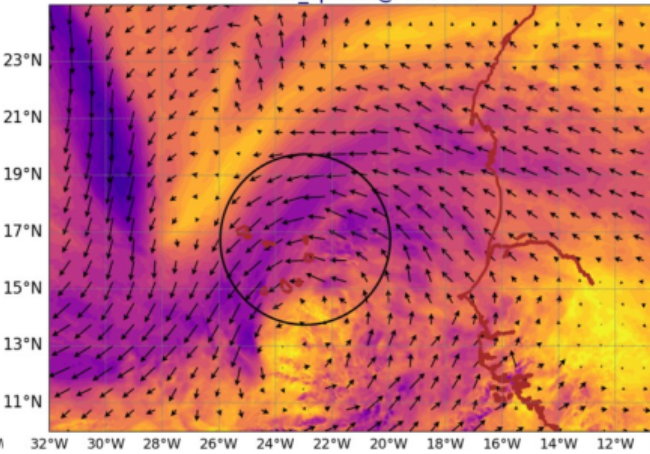
F

# WIND @ 700 hPA (top) WIND @ 920 h (bellow)

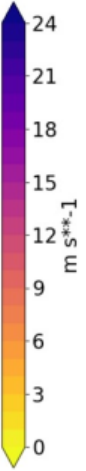
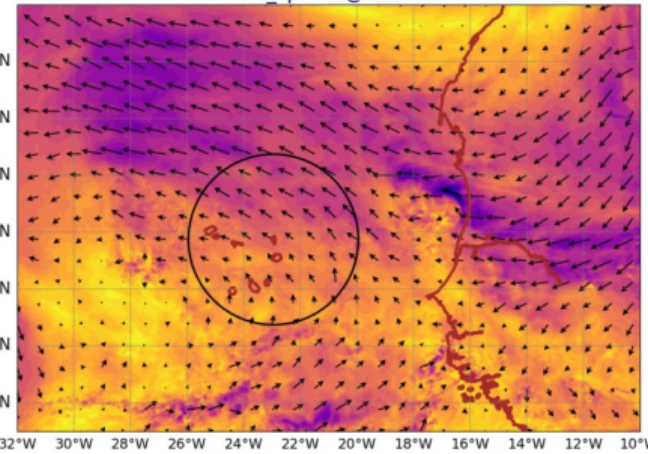
AROME25 20240815-12-UTC -ech(12h)  
wind\_sp700 @ 700hPa



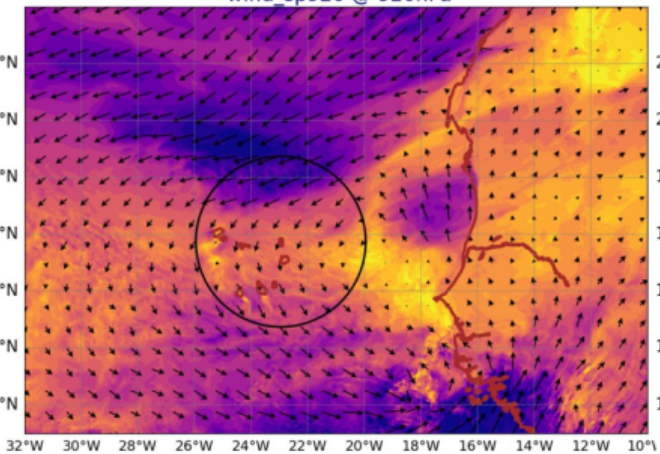
AROME25 20240816-12-UTC -ech(36h)  
wind\_sp700 @ 700hPa



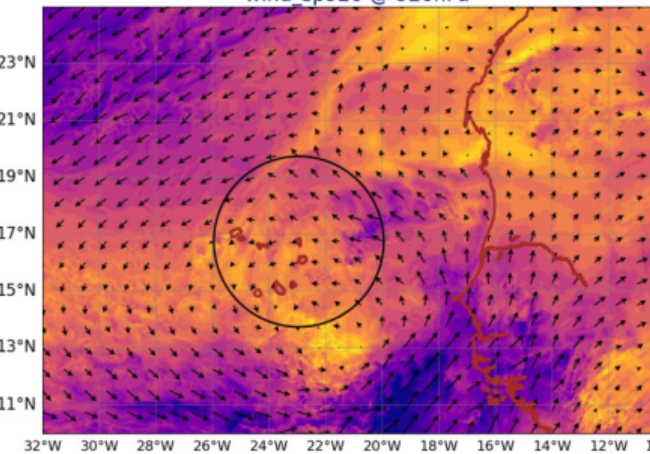
AROME25 20240817-12-UTC -ech(60h)  
wind\_sp700 @ 700hPa



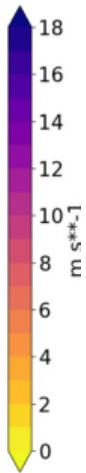
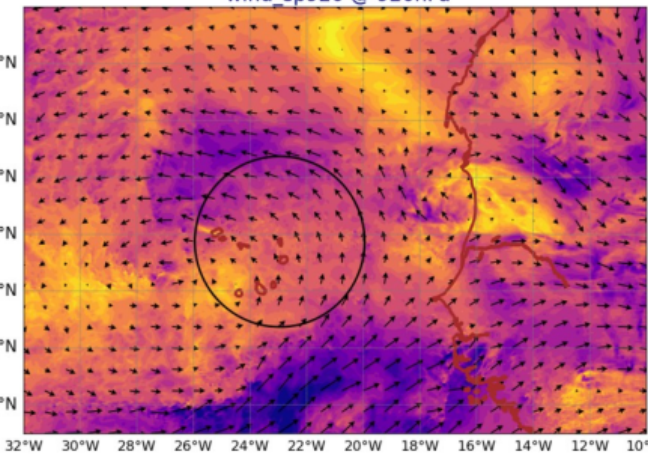
AROME25 20240815-12-UTC -ech(12h)  
wind\_sp920 @ 920hPa



AROME25 20240816-12-UTC -ech(36h)  
wind\_sp920 @ 920hPa



AROME25 20240817-12-UTC -ech(60h)  
wind\_sp920 @ 920hPa



# Vertical Velocity @ 500 hPa (first line)

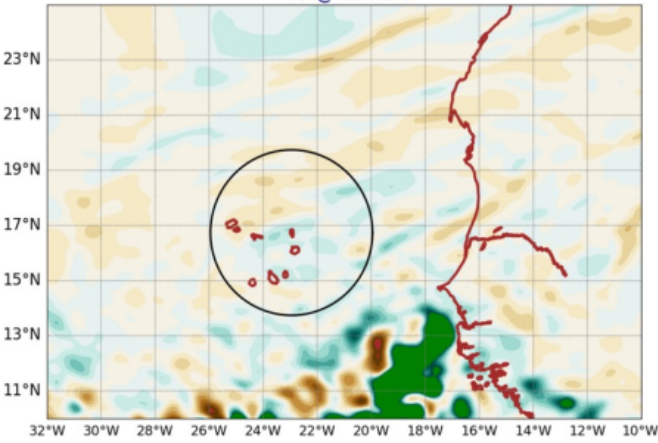
## Liquid Water Path+ Ice Water Path (yellow)

@ 12 UTC, 12 UTC J+1, 12 UTC J+2

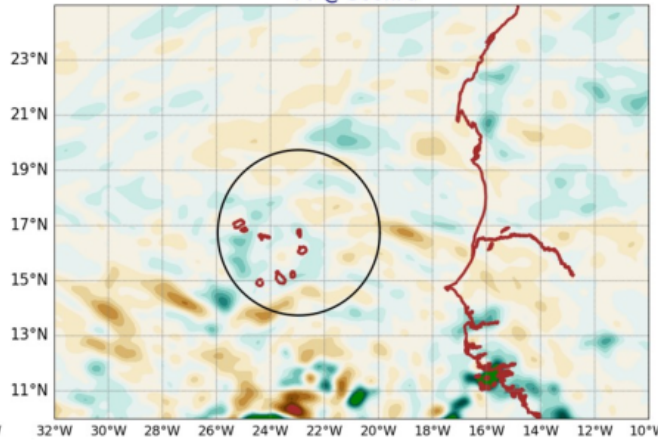
AROME VV @ 500hPa

AROME LWP+IWP

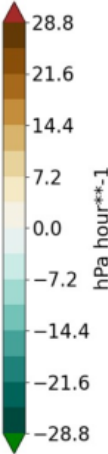
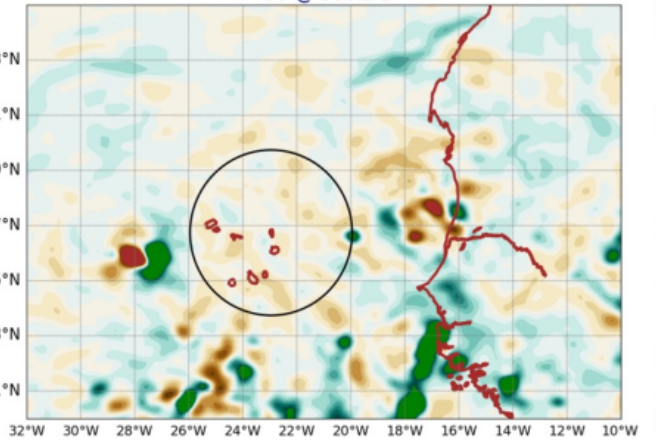
AROME25 20240815-12-UTC -ech(12h)  
VV @ 500hPa



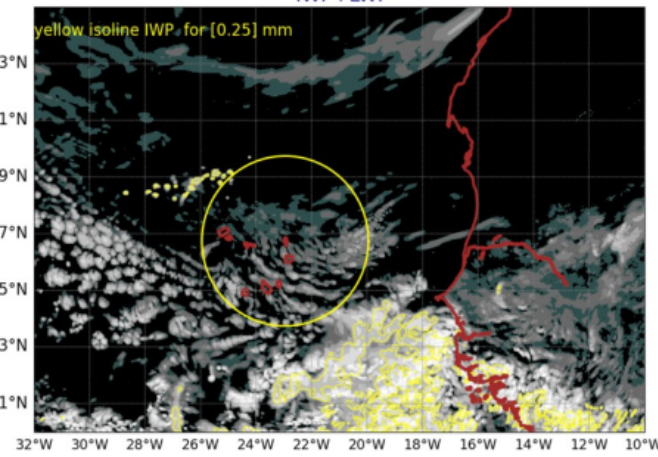
AROME25 20240816-12-UTC -ech(36h)  
VV @ 500hPa



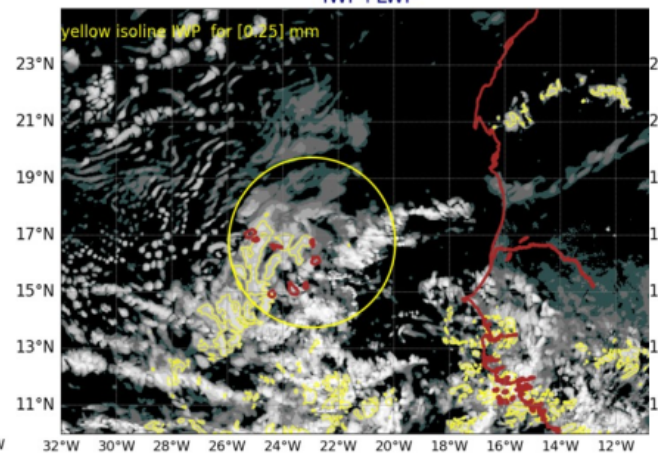
AROME25 20240817-12-UTC -ech(60h)  
VV @ 500hPa



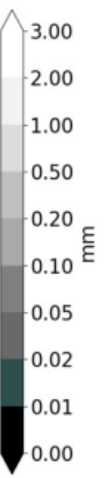
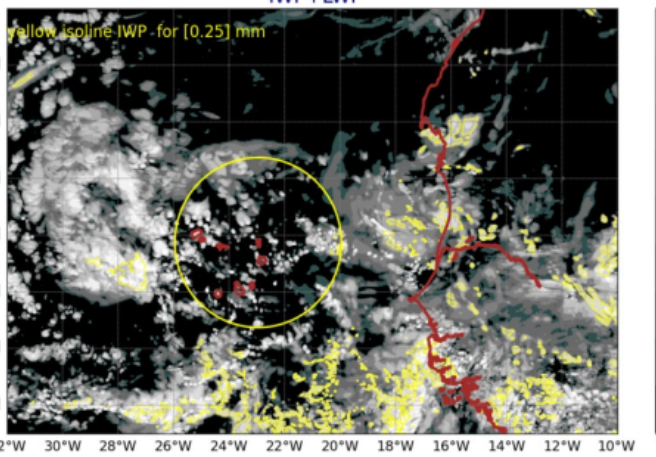
AROME25 20240815-12-UTC -ech(12h)  
IWP+LWP



AROME25 20240816-12-UTC -ech(36h)  
IWP+LWP



AROME25 20240817-12-UTC -ech(60h)  
IWP+LWP

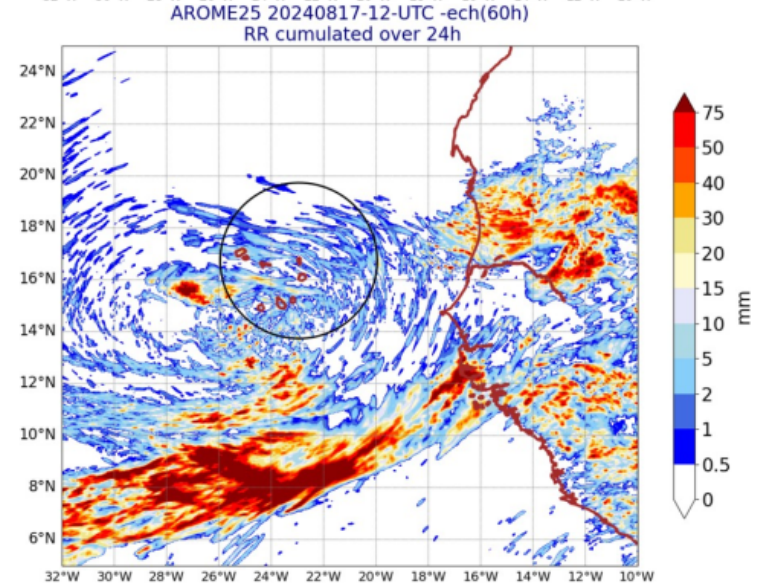
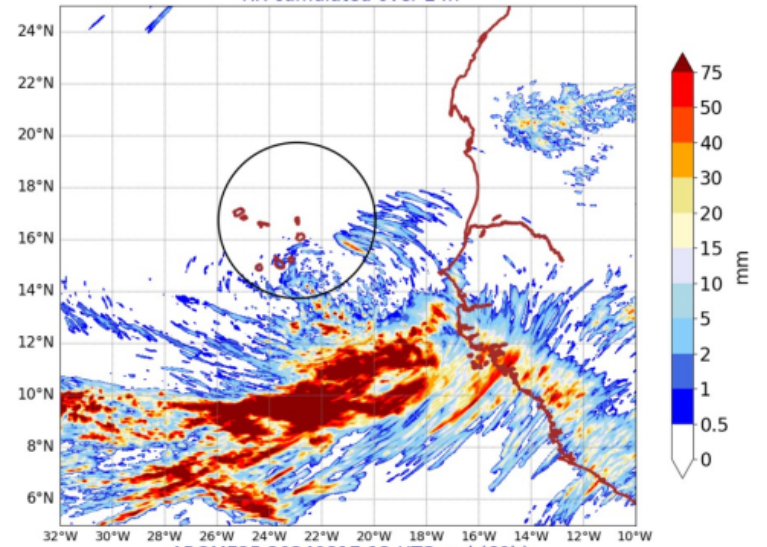
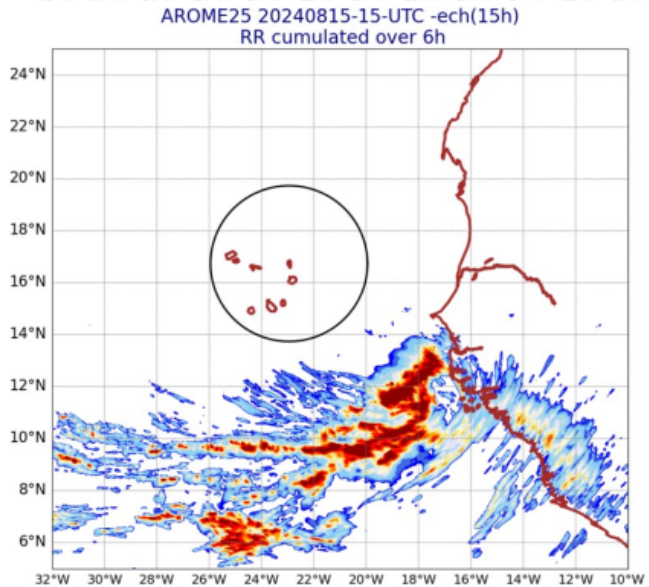
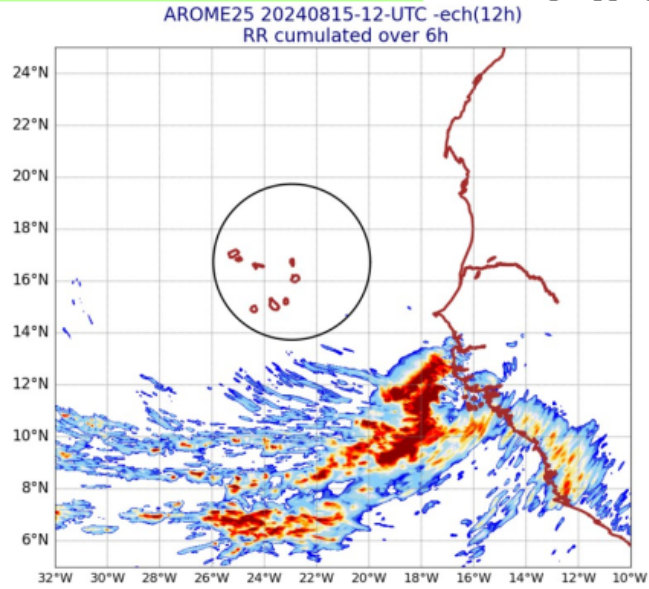


# 6 h cumulated rain J, J+1, D+2

## AROME precipitation

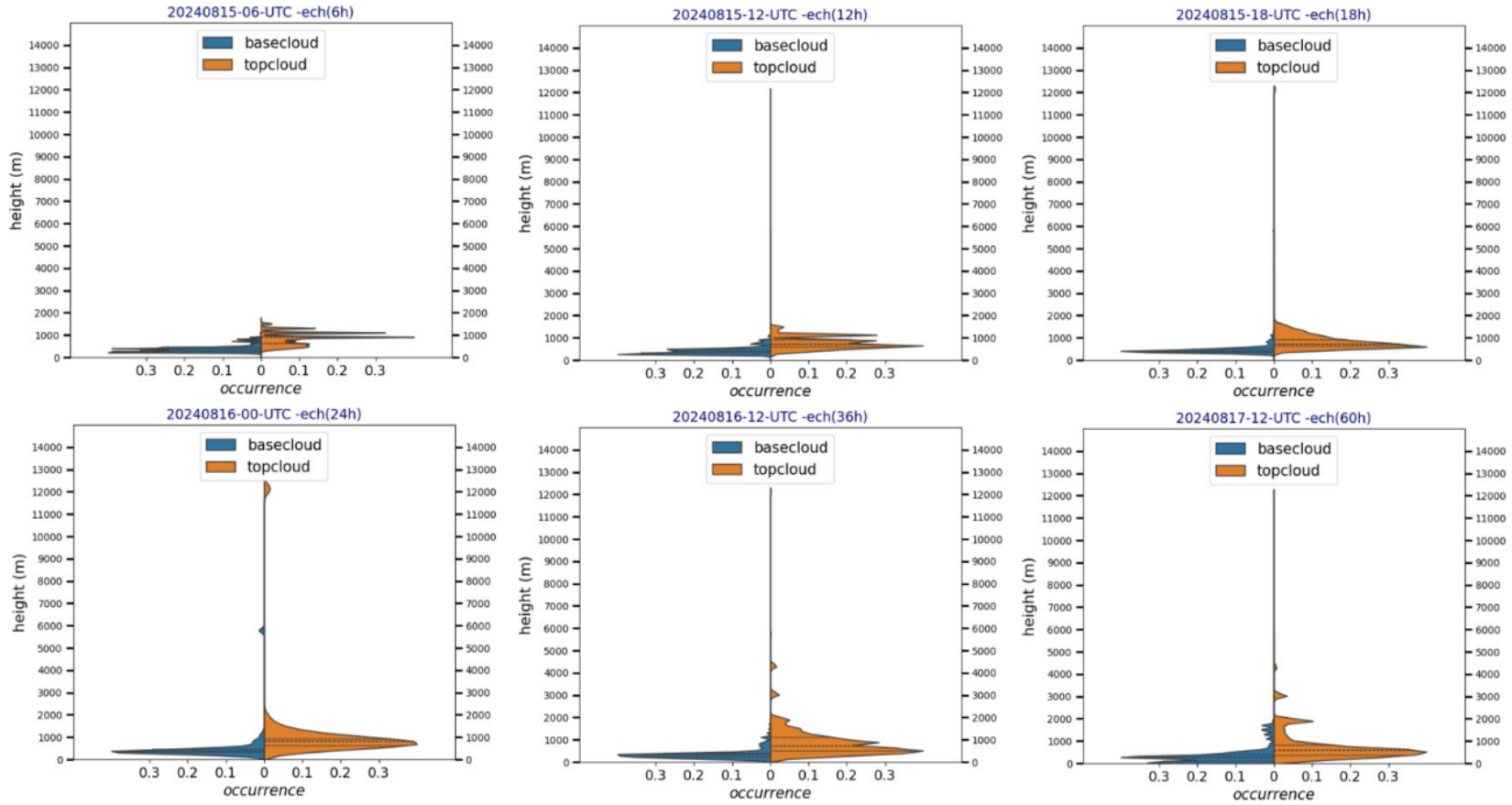
over 6h ech 12h and 15h

over 24h ech 36h and 60h



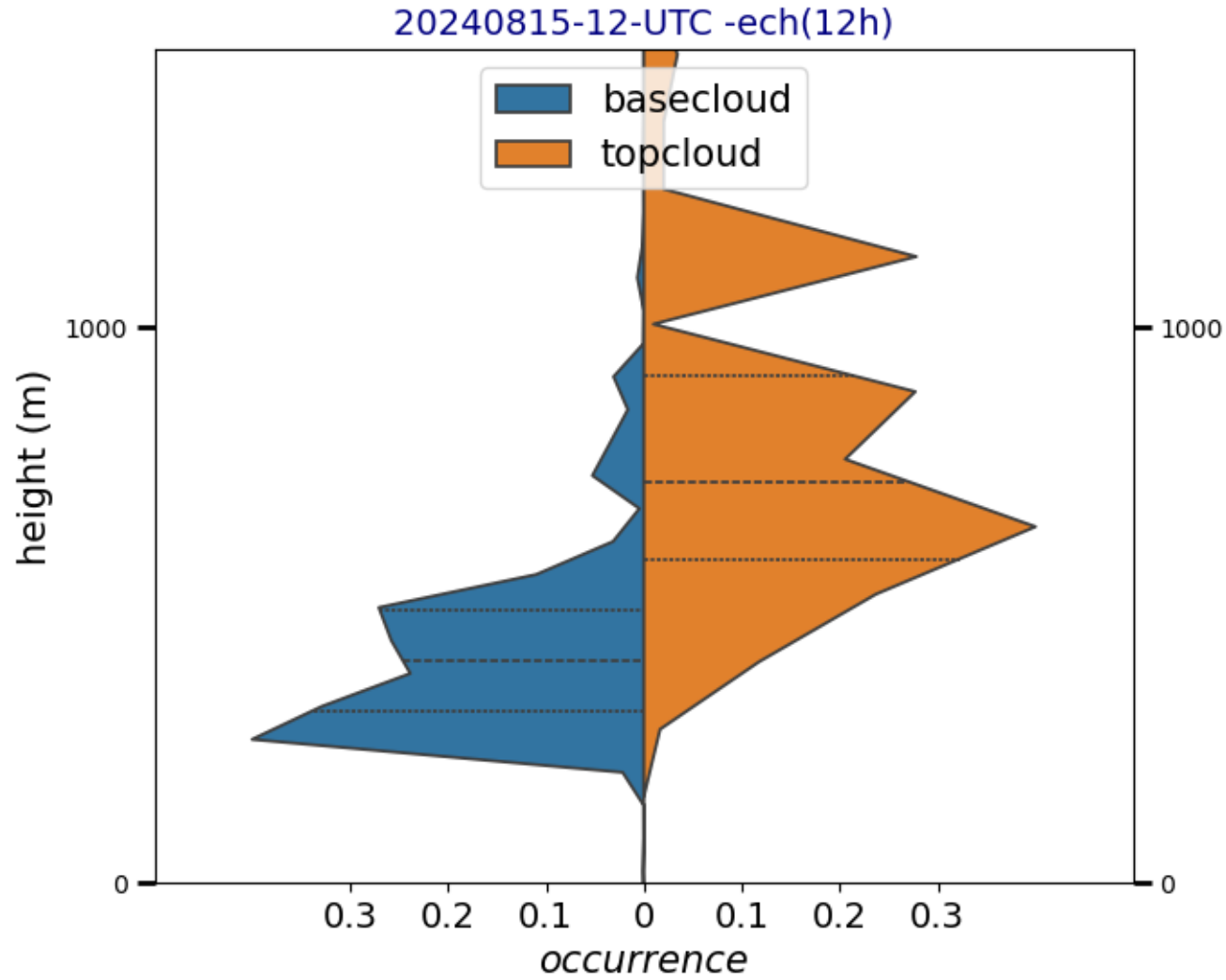
**Precip expected  
between 16 12  
UTC and 17 12  
UTC**

# PDF @ 06 UTC, 12UTC, 18UTC



@ 06 UTC  
Base : 300  
Top : 600 m

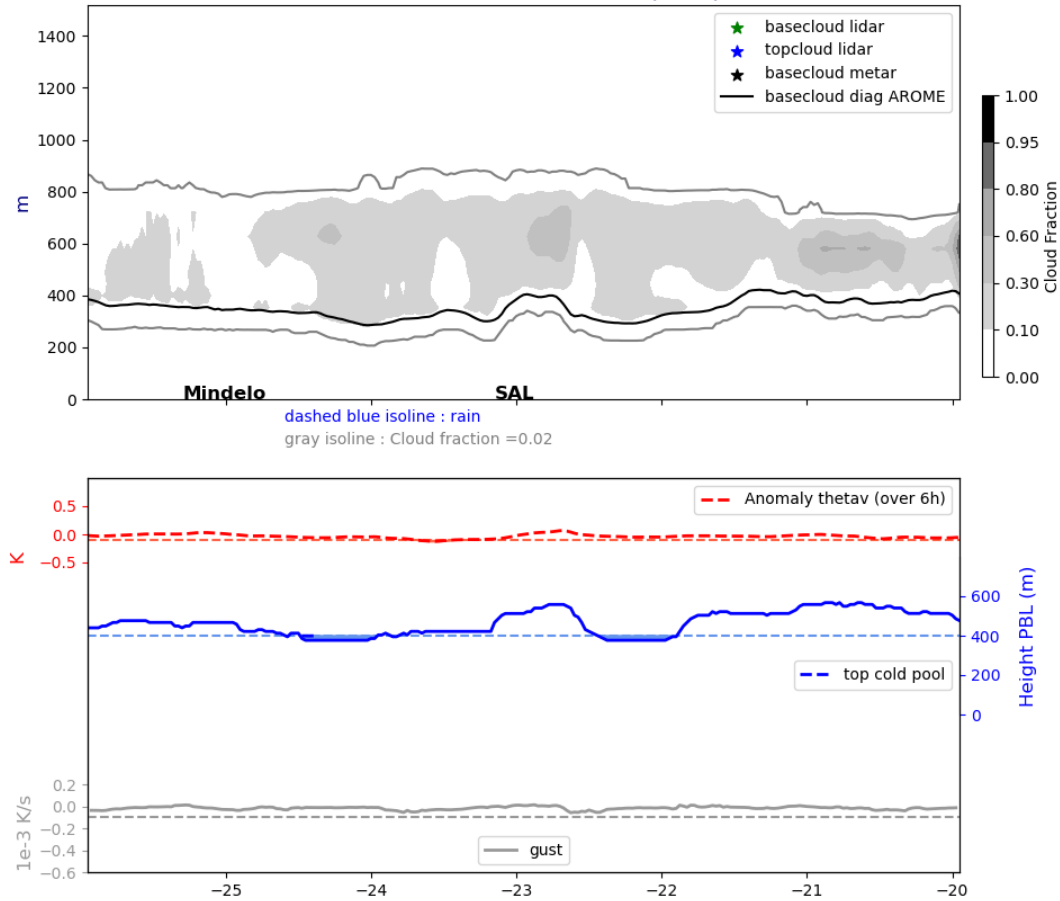
# PDF 12UTC



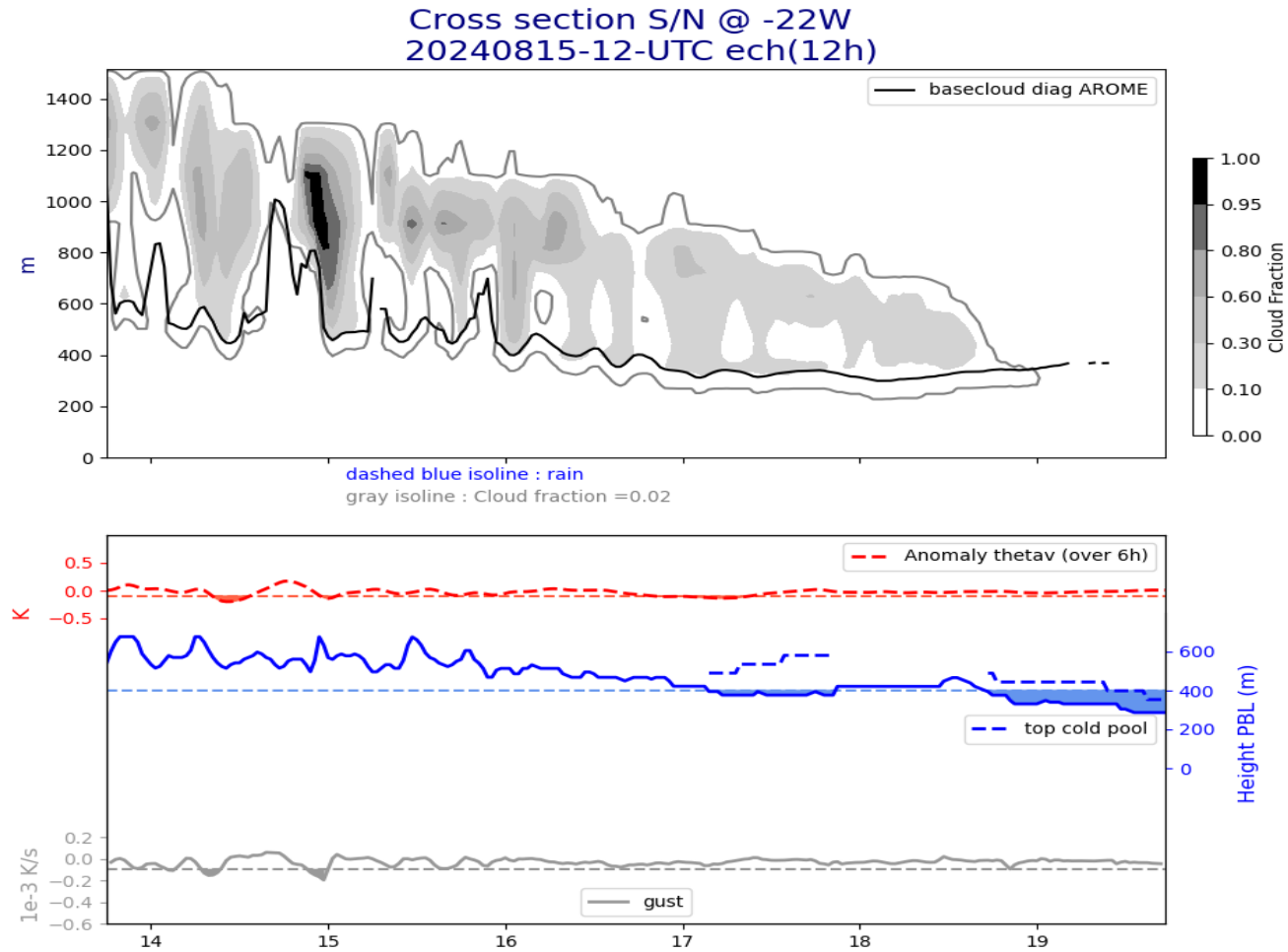
Base : 300 m  
Top : 500 to 1200 m

# Zonal Cross section Today 12 UTC

Cross section E/W @ 17.5N  
20240815-12-UTC ech(12h)



# Meridional Cross section Today 12 UTC





# Meridional Cross section

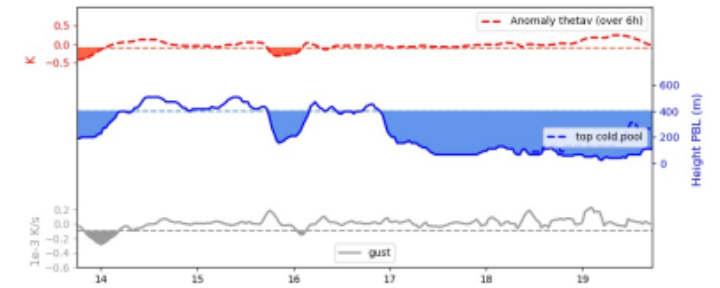
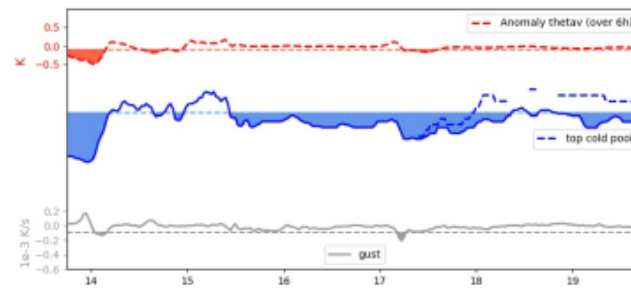
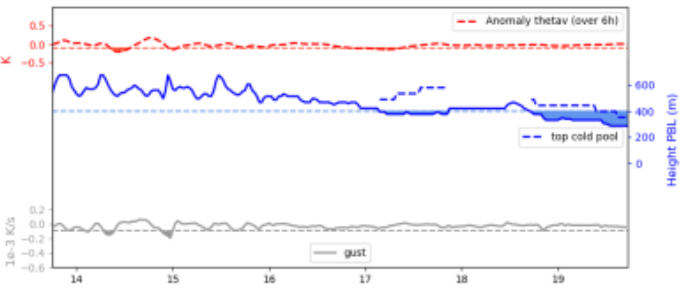
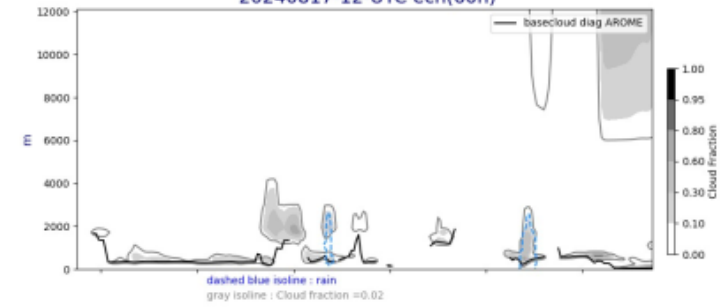
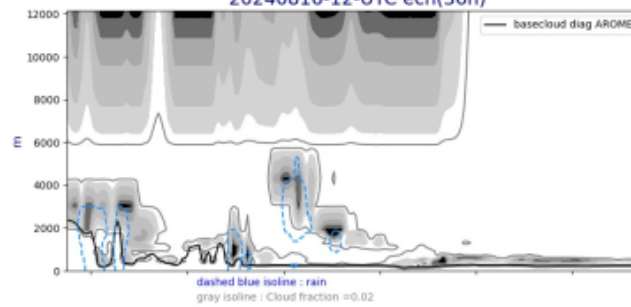
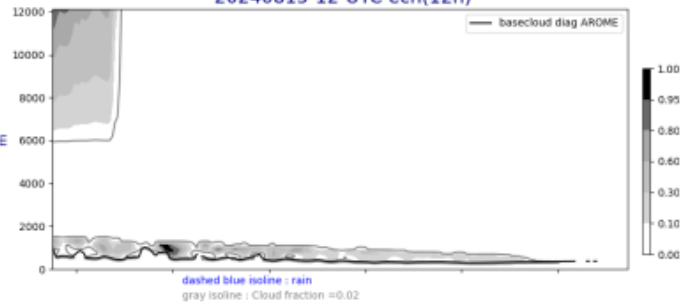
Today 12 UTC

tomorrow 12 UTC

Cross section S/N @ -22W  
20240815-12-UTC ech(12h)

Cross section S/N @ -22W  
20240816-12-UTC ech(36h)

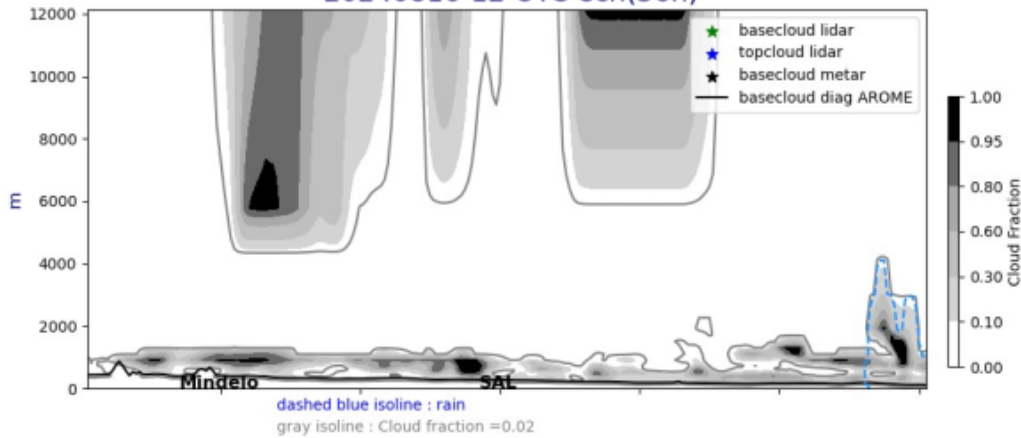
Cross section S/N @ -22W  
20240817-12-UTC ech(60h)



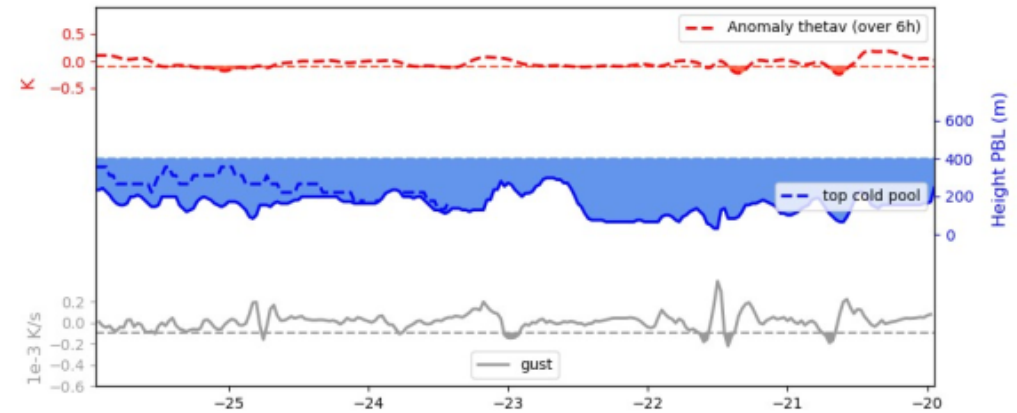
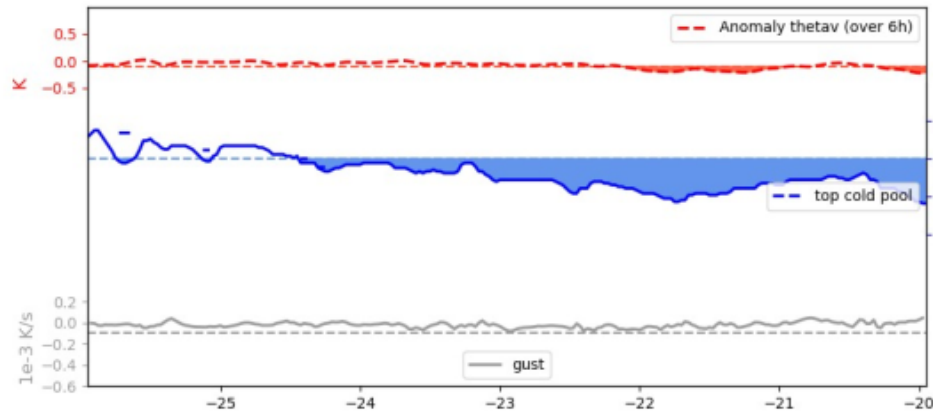
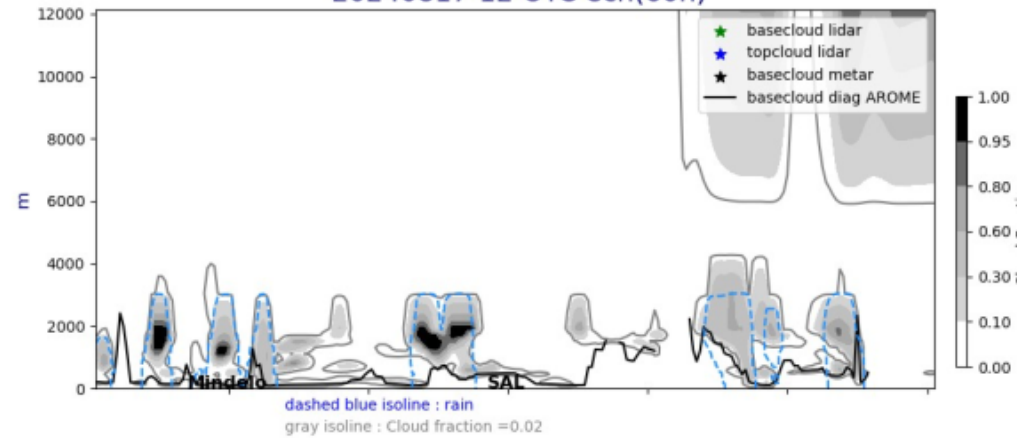
# D+1, D+2,

## Lat. cross section @17°5N fct : J+1 and J+2 @ 12UTC

Cross section E/W @ 17.5N  
20240816-12-UTC ech(36h)



Cross section E/W @ 17.5N  
20240817-12-UTC ech(60h)



# SUMMARY

---

## Today Forecast :

PW = 40 mm (rather dry) at Sal , PW=53 mm at Dakar

Wind @ 920 hPa : northerlies 6 m/s @ SAL, 2-3 to the East

Wind @ 700 hPa : East, north-east, 21 m/s (strong African Easterly Jet)

Typical environmental : African Eastely wave arrival

Base cloud : 300 m

Top cloud : 750 m

Orga : shallow convection (1-3 octas)

No rain

## Tomorrow Forecast

PW : Afternoon : ~ 54 mm

wind 920 : weak : 2 m/s

wind 700:Easterlies 16 m/s

Orga : Convective system slightly to the south

Rain expected

# SUMMARY

---

## Day +1 to day +2 Forecast :

PW = 58 mm

Wind @ 920 hPa : southerlies 9 m/s @ SAL, 2-3 to the East

Wind @ 700 hPa : southerlies, 8 m/s

Typical environmental : African Eastely wave, right after the through

Base cloud : 200 m

Top cloud : 750 m

Orga : deep convection (6-7 octas)  
rain

# Days to come ...

## Daily PW and wind @ 925 hPa – total and anomalies

