



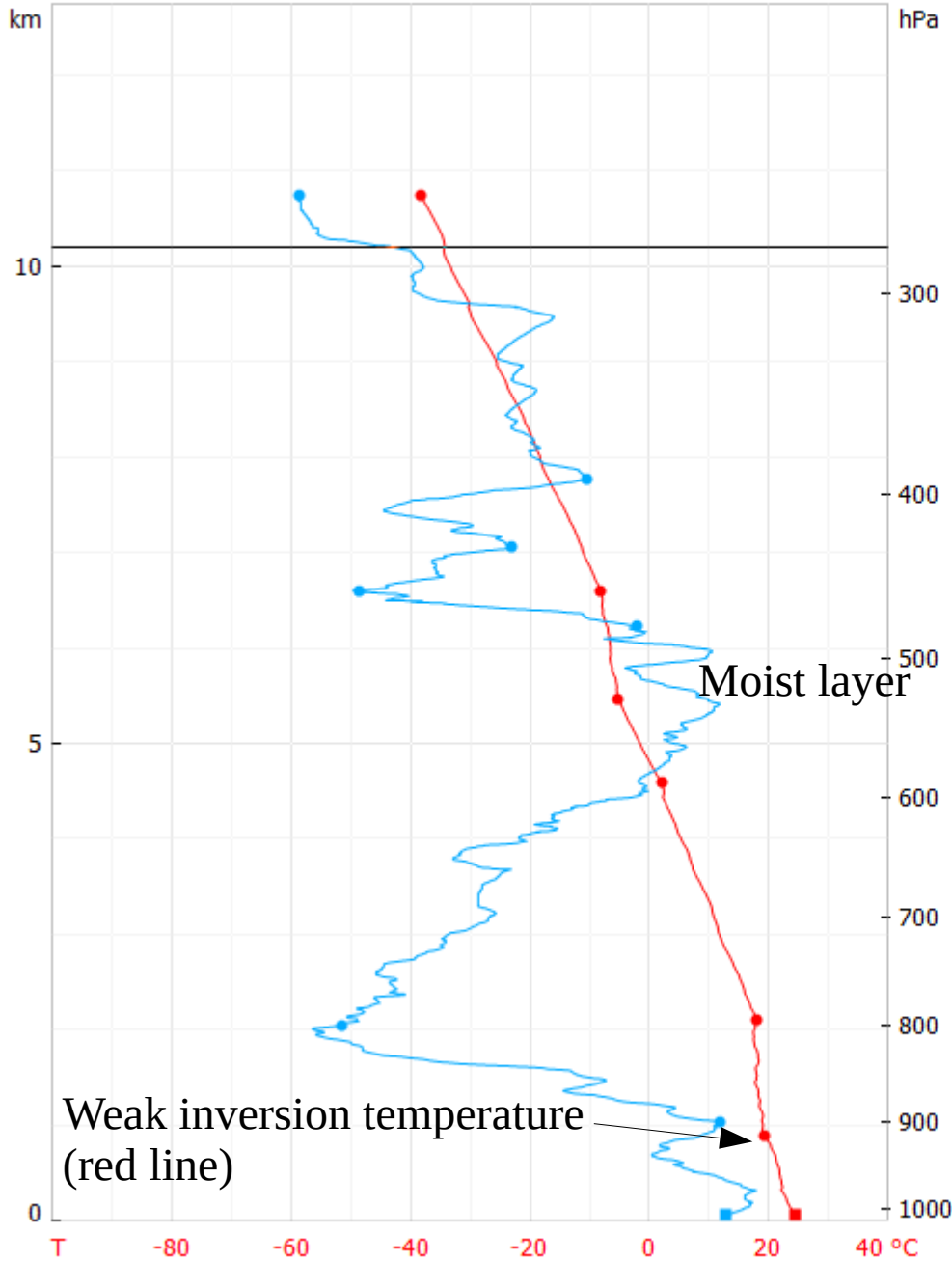
Briefing Tuesday 13th august



1) ANALYSIS et OBSERVATIONS

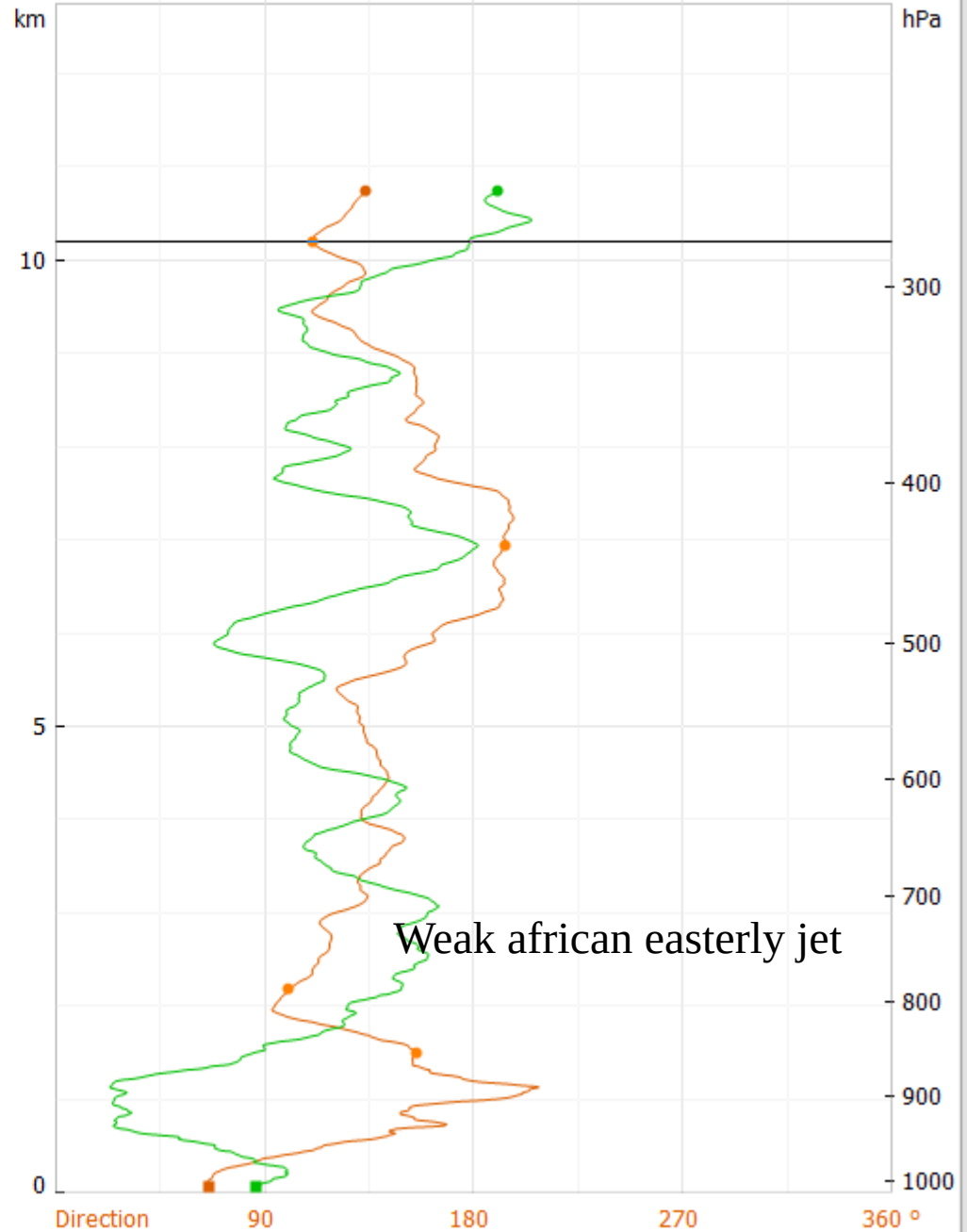
Profil TU 23:52:41 279.9 hPa 10203.1 m 37.3 % -34.3 °C

RH 0 20 40 60 80 100 %



Profil vent 23:52:41 279.9 hPa 10203.1 m 9.9 m/s 111 °

Vitesse 5 10 15 20 m/s



ANALYSIS : ANASYG 13th @ 00 UTC

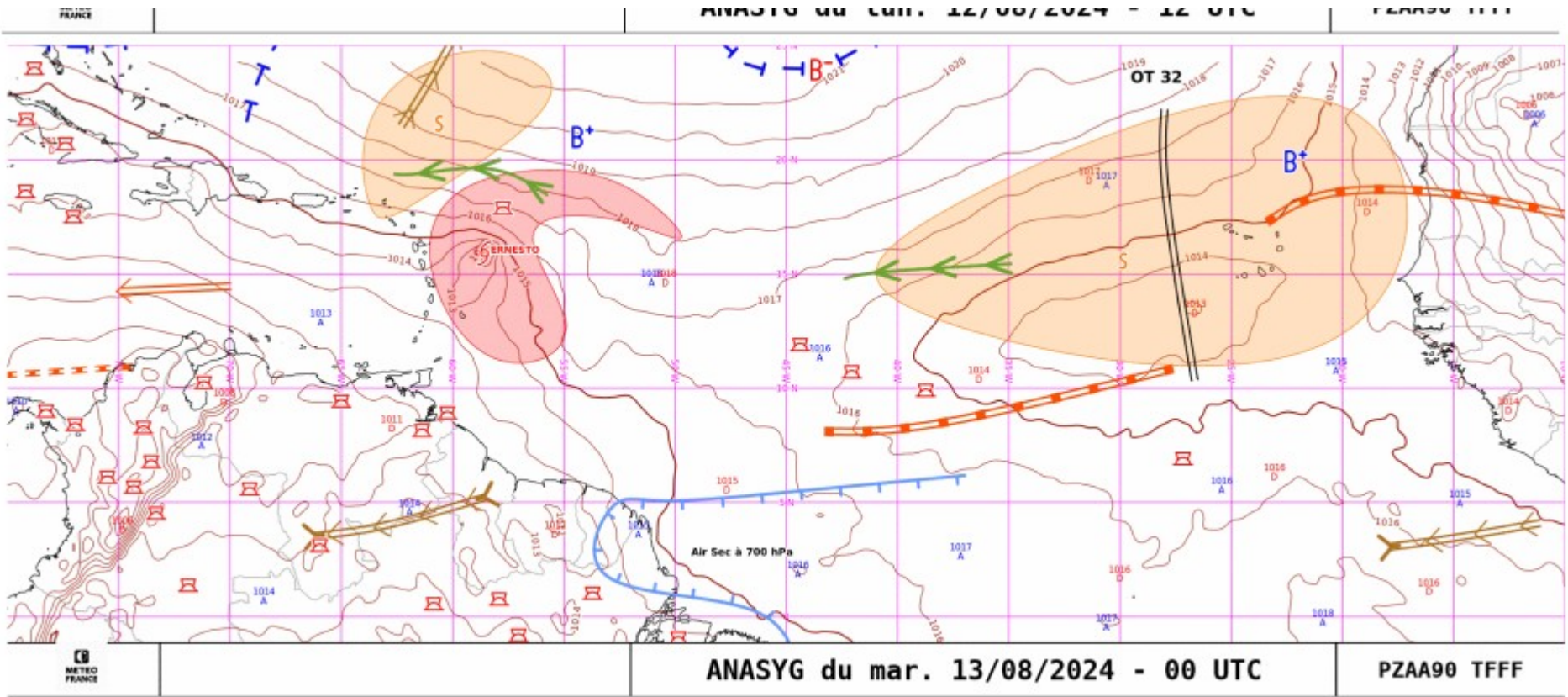
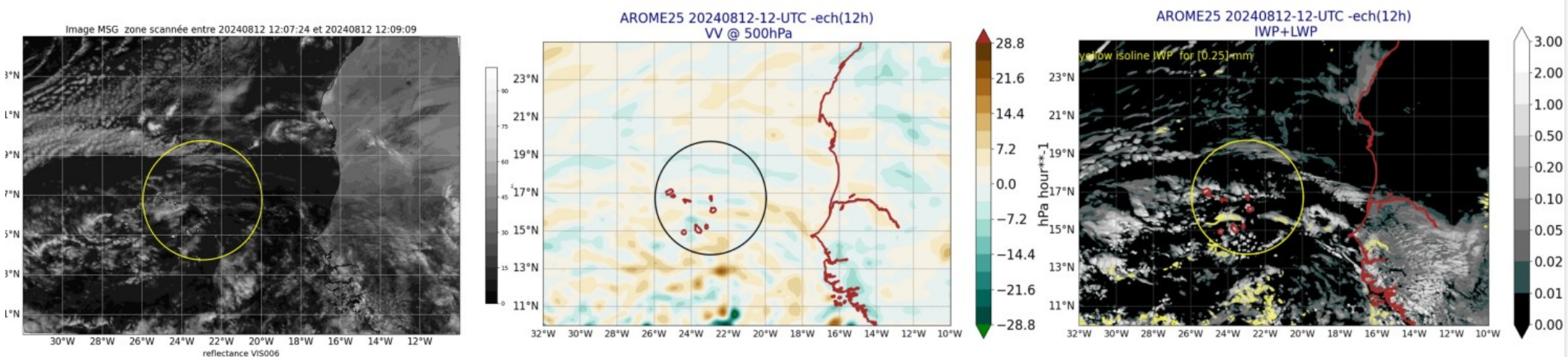


Image sat (left) vs AROME (center and right)

1rst line : 10 aug. 12 UTC

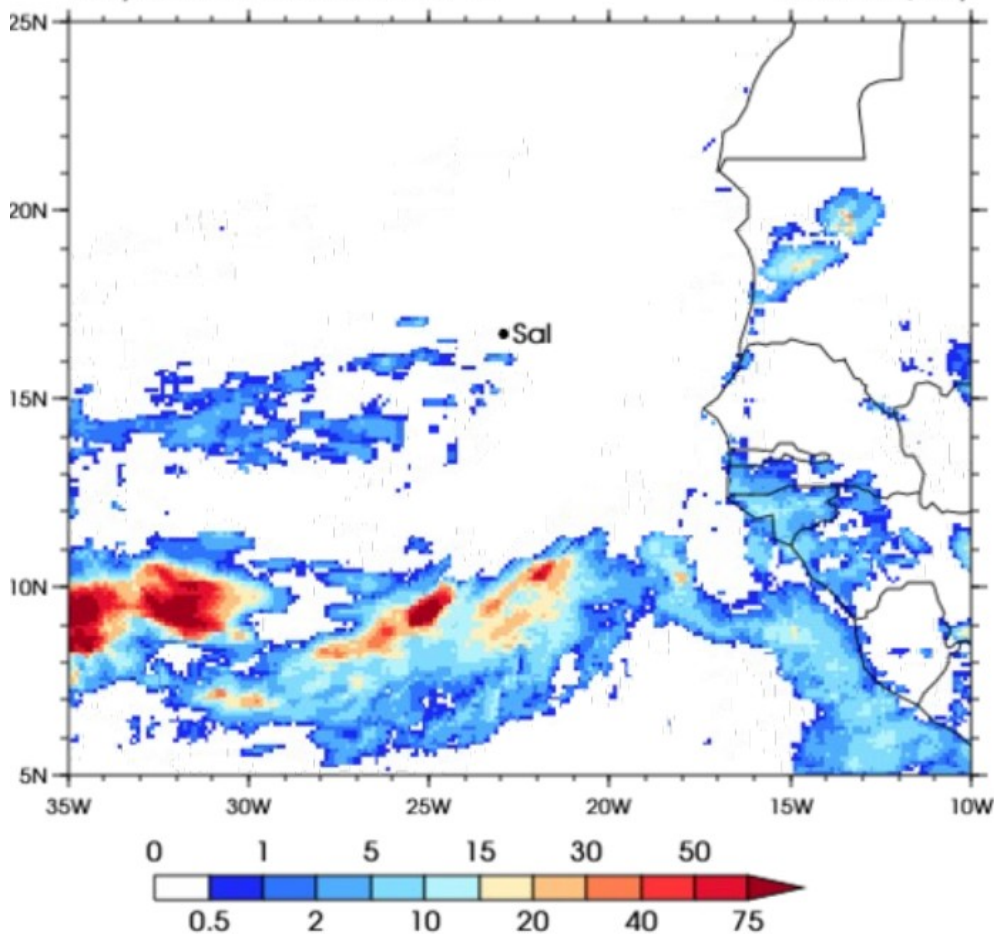


Precipitation IMERG and AROME J-1

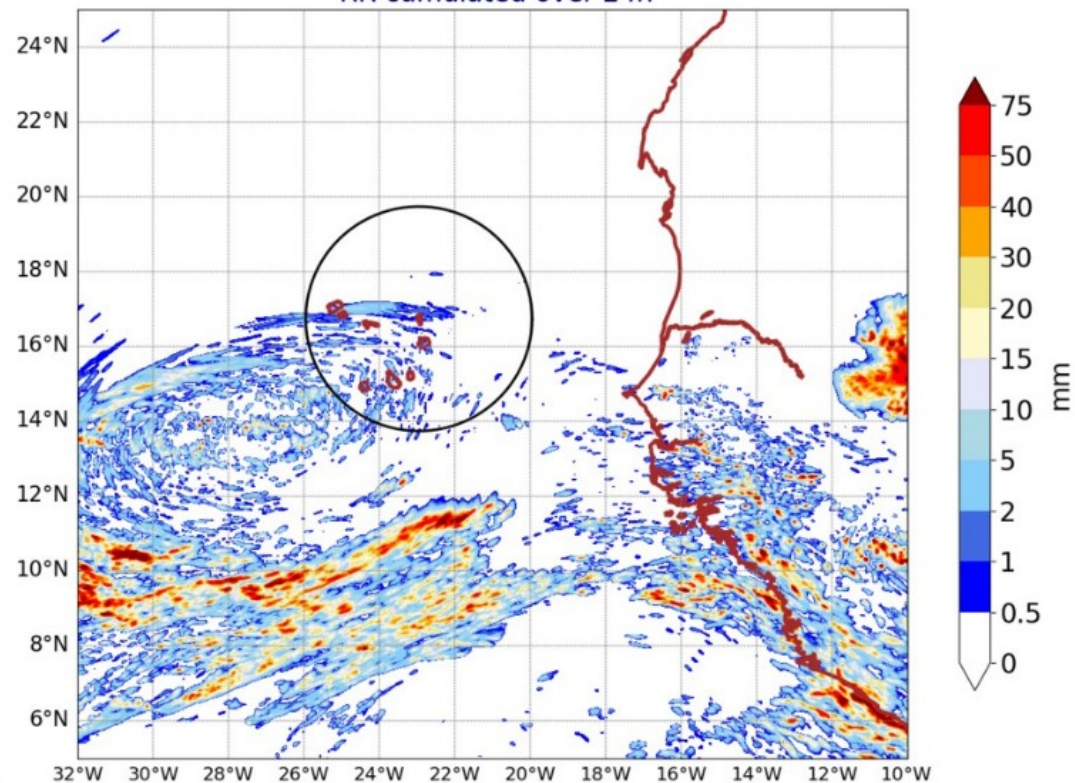
3IMERGHHE GPM IMERG Early Precipitation

Daily accumulated: 2024-08-12

Units: mm/day



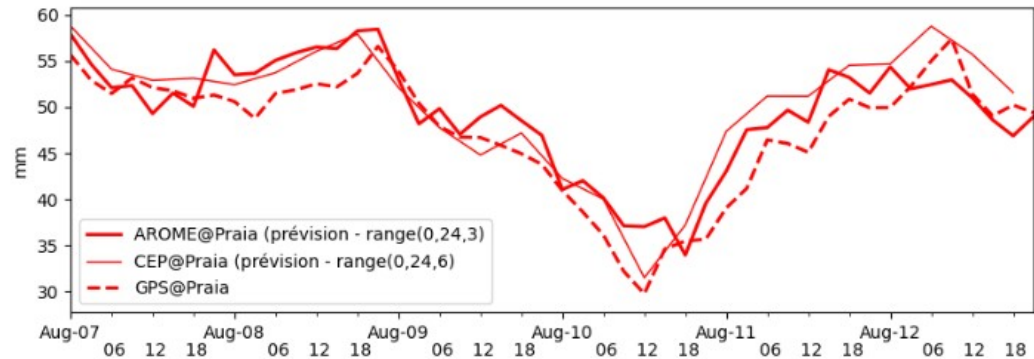
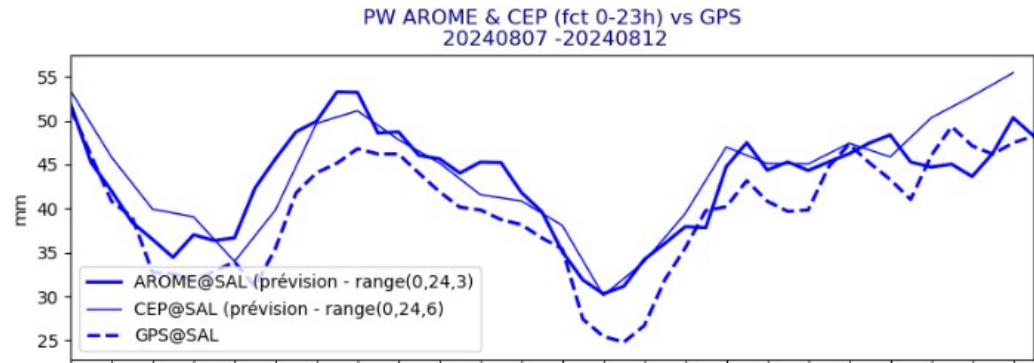
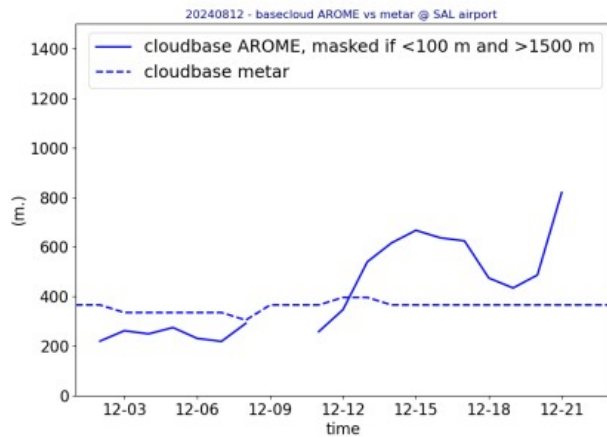
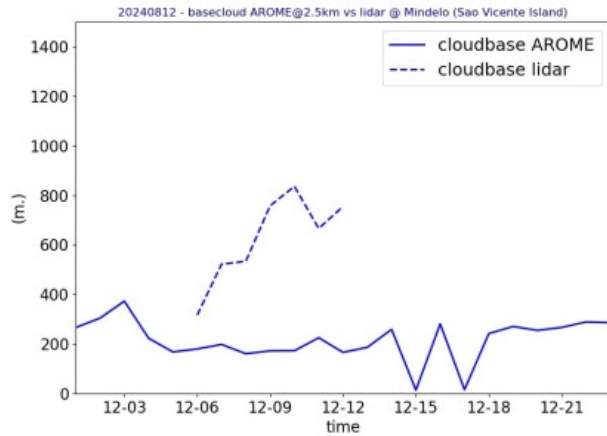
AROME25 20240813-00-UTC -ech(24h)
RR cumulated over 24h



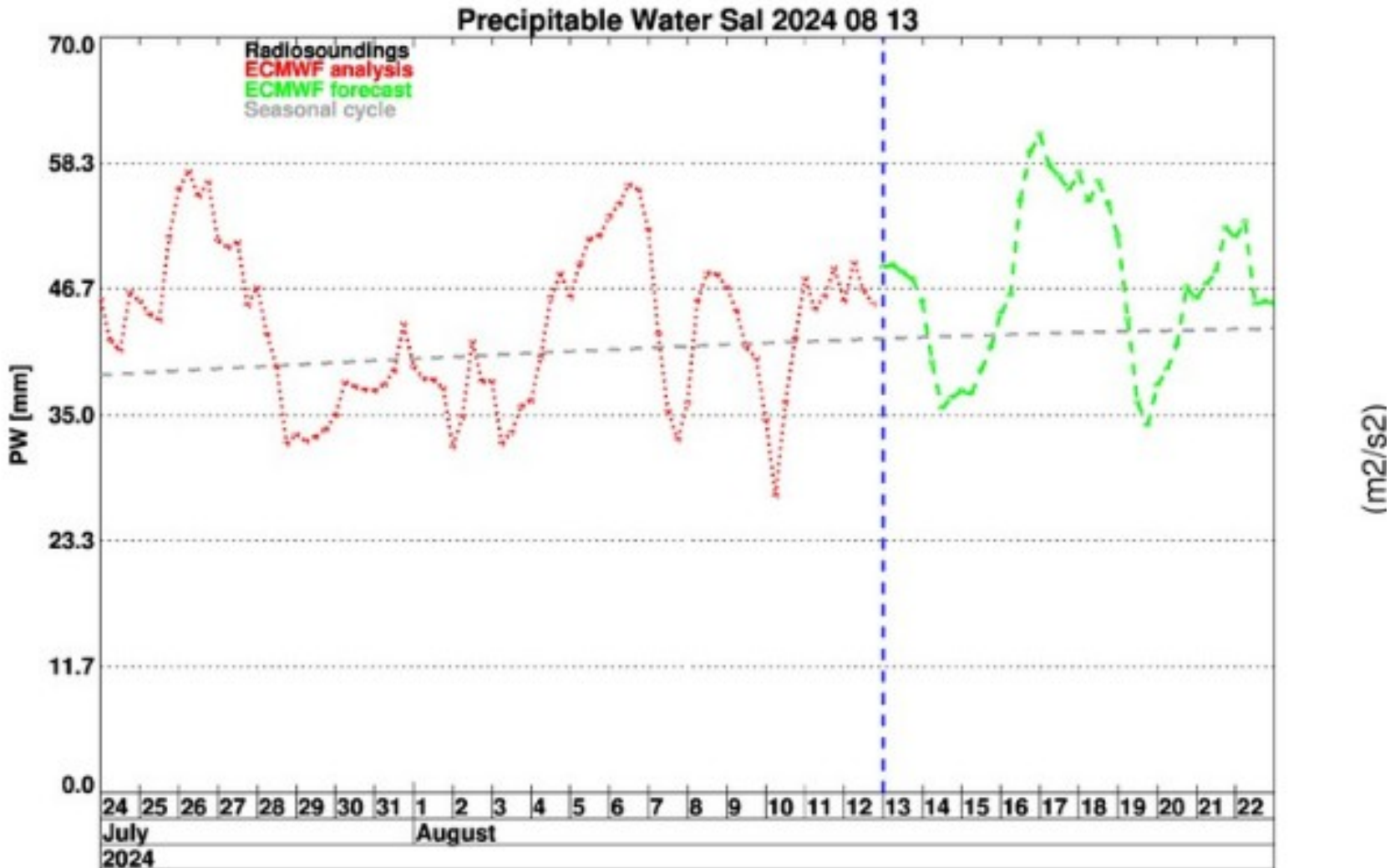
OBSERVATIONS J-1

Lidar@ mindelo
metar@sal

GPS @ Sal
GPS @ Praia



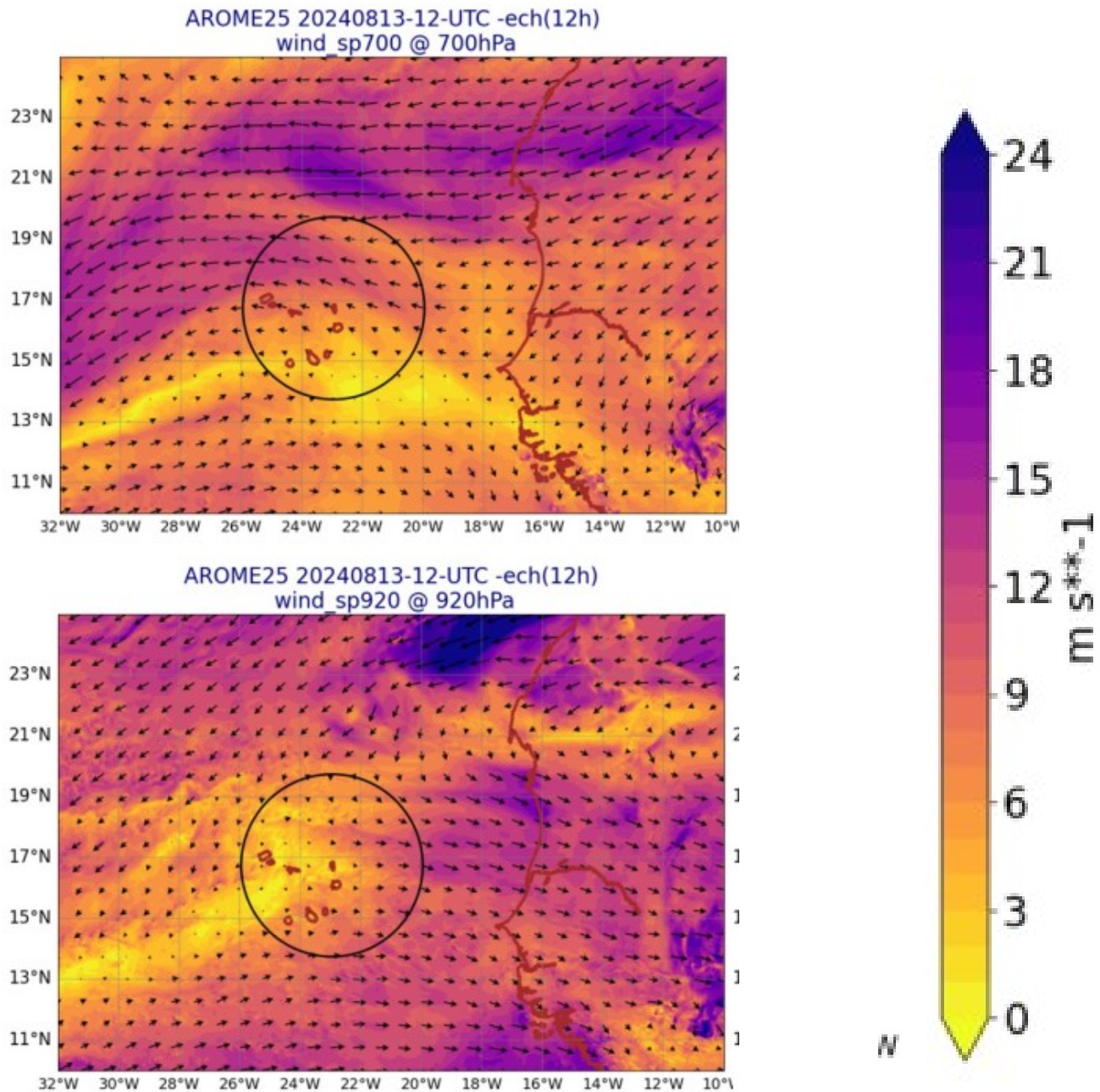
Precipitable Water @ SAL : analysis and forecast





2) FORECAST

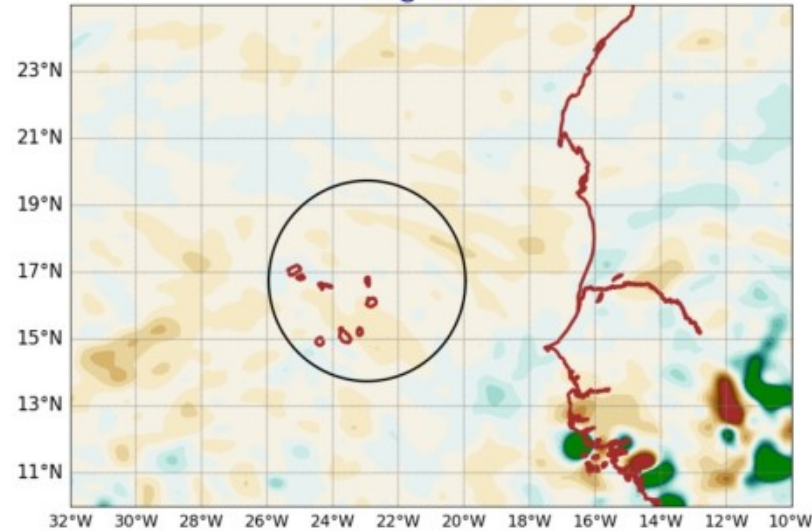
WIND @ 700 hPa (top)
WIND @ 920 h (bellow)



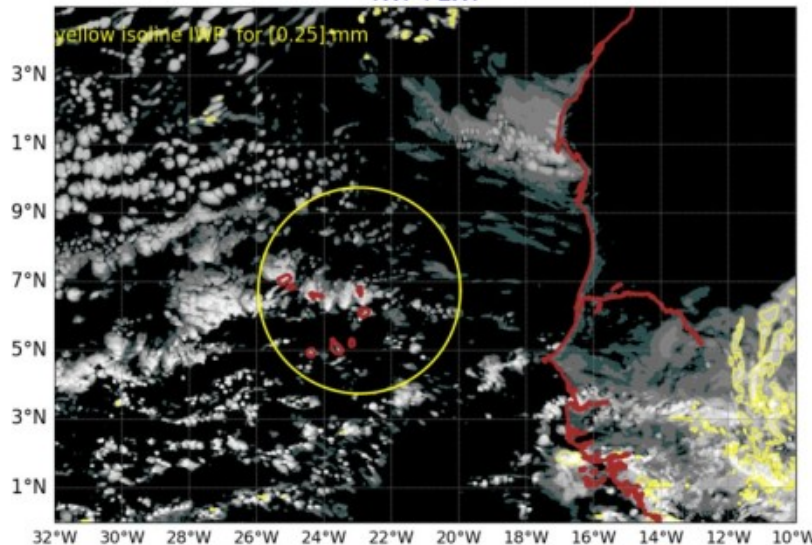
Vertical Velocity @ 500 hPa (first line) Liquid Water Path+ Ice Water Path (yellow) @ 12 UTC

Strong
Subsiding
motion

AROME25 20240813-12-UTC -ech(12h)
VV @ 500hPa

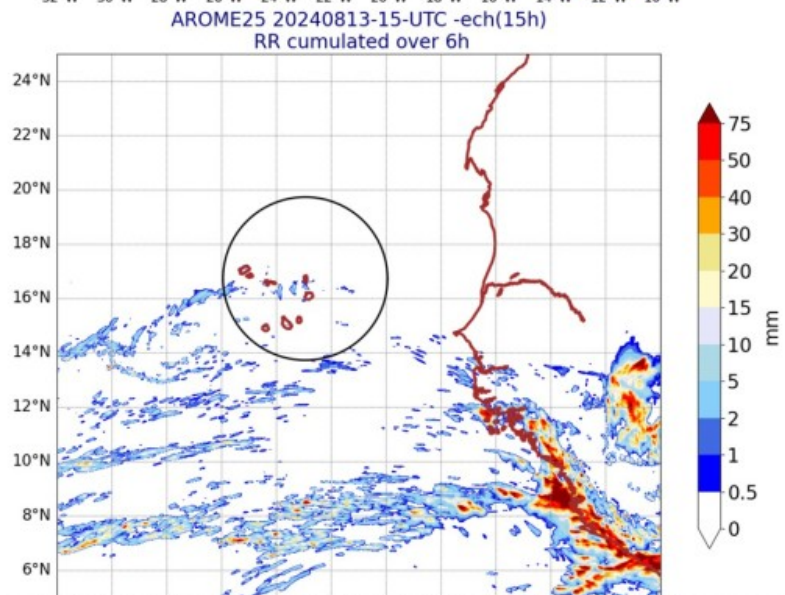
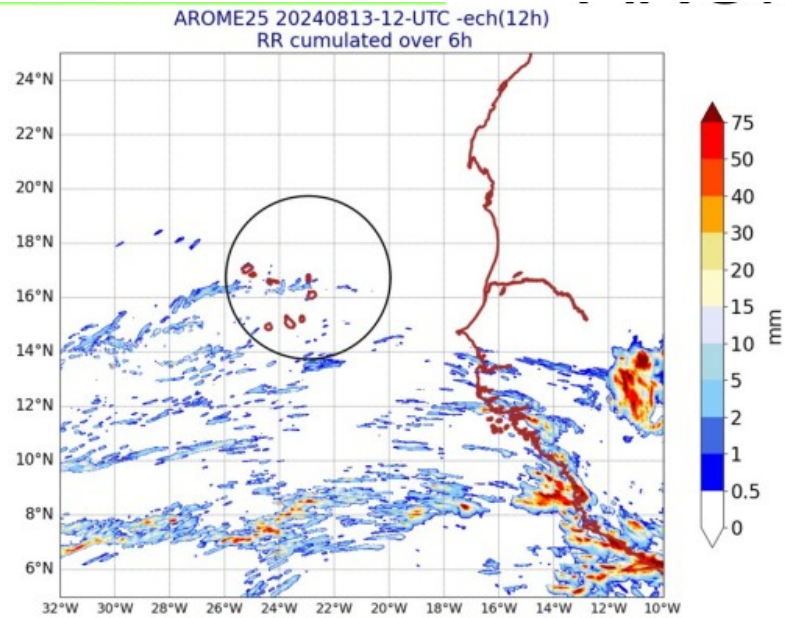


AROME25 20240813-12-UTC -ech(12h)
IWP+LWP

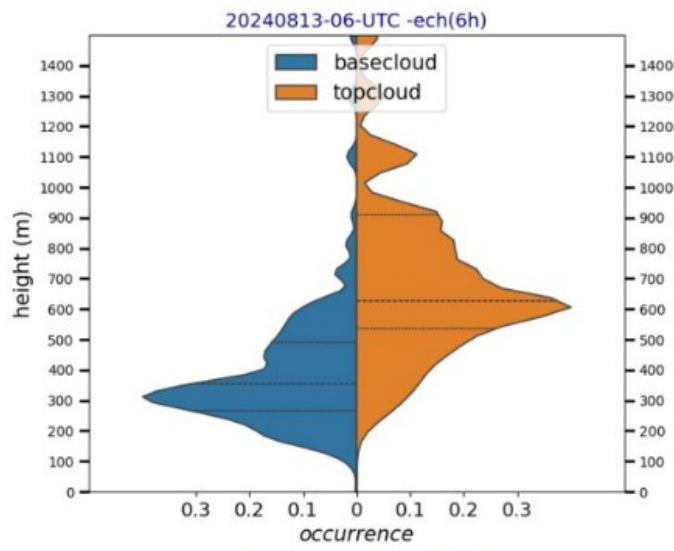


Cloud forecast :
Very few ,
Sky clear ?

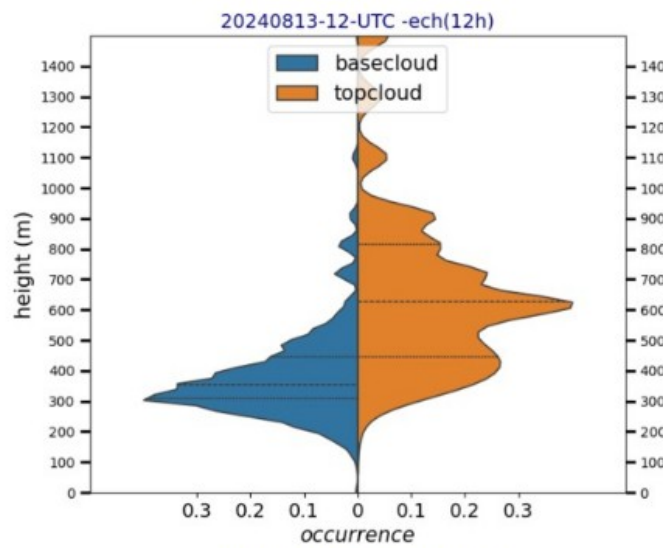
6 h cumulated rain @ 12 UTC and 15 UTC



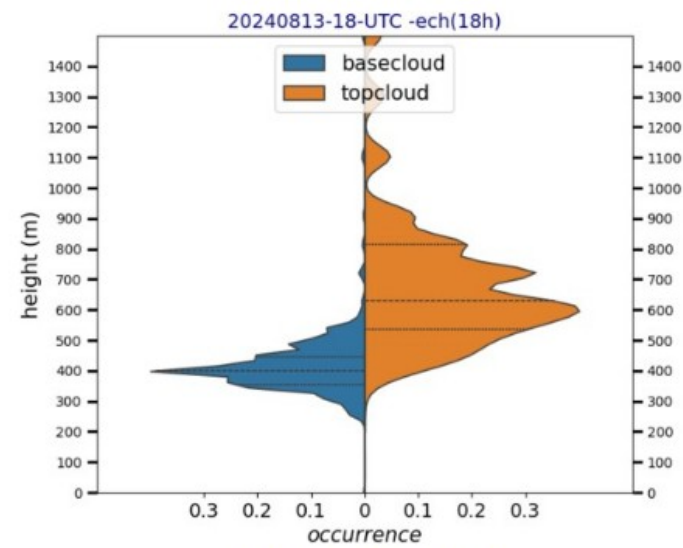
AROME base and top cloud (mean in the 3° circle)



@ 06 UTC
Base : 300 m
Top : 600 m



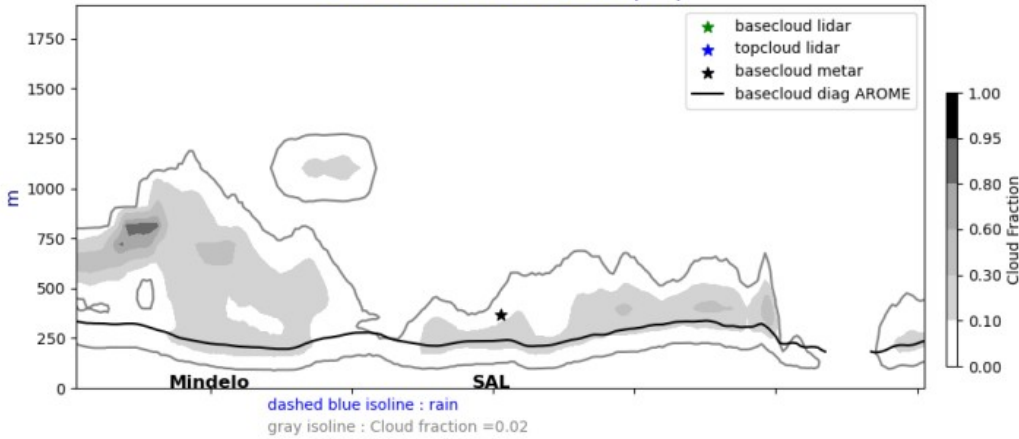
@12 UTC
Base : 300 m
Top : 600 m



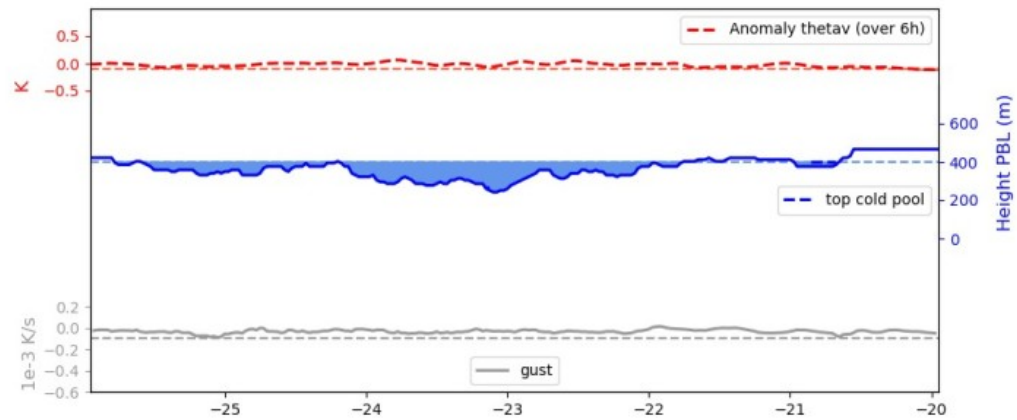
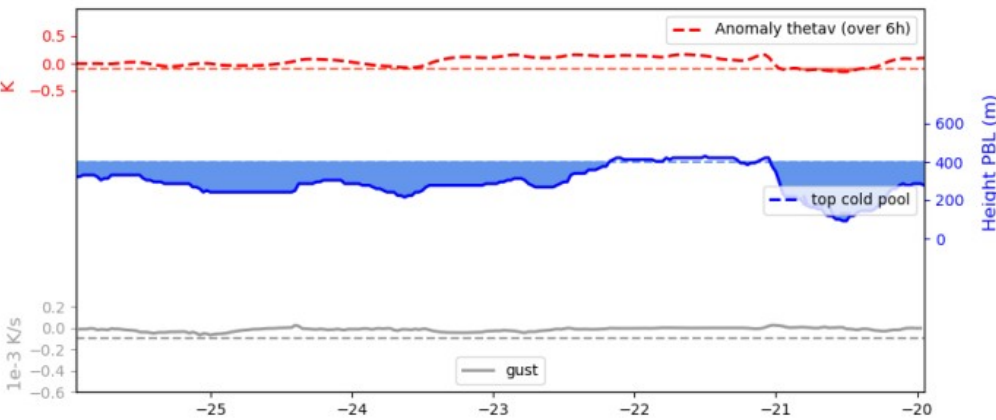
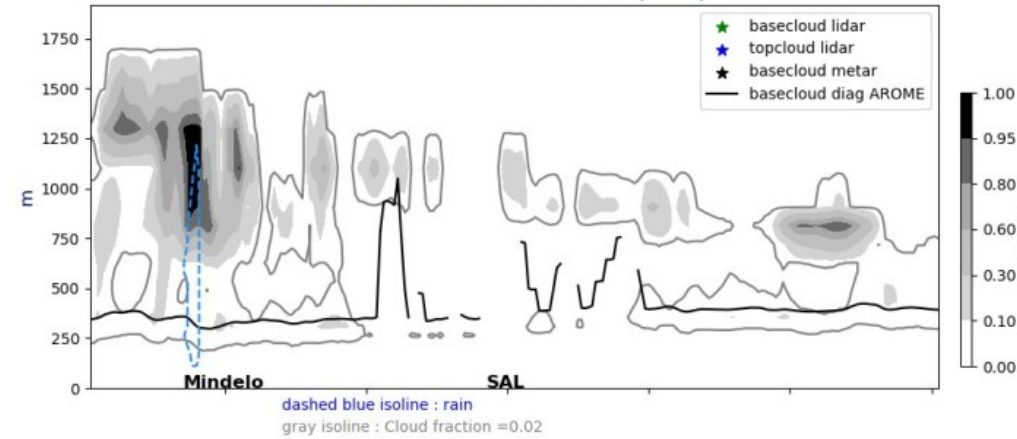
18 UTC
Base : 400 m
Top : 600-900 m

Lat. cross section @17°5N fct : 01UTC, 12UTC

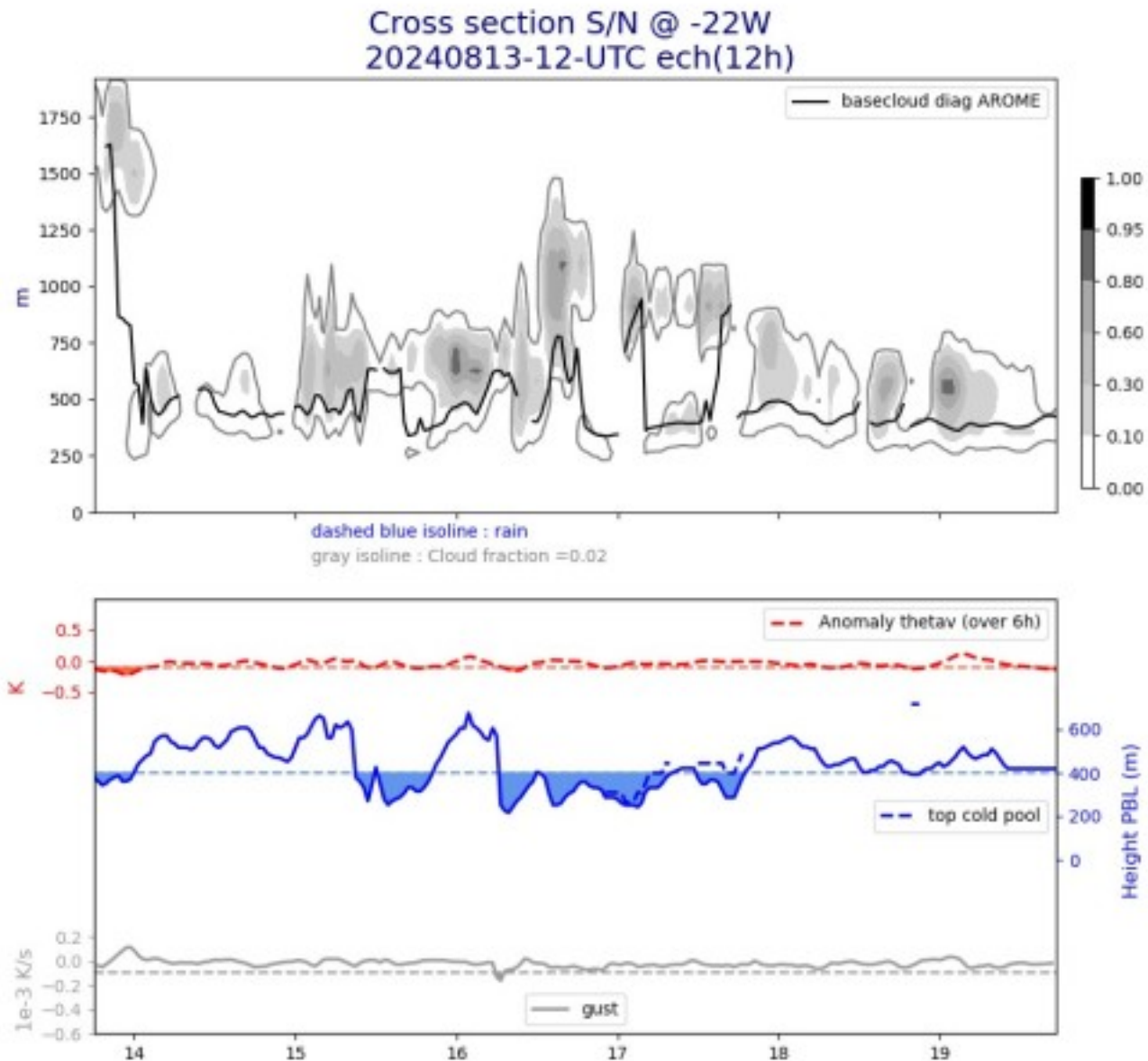
Cross section E/W @ 17.5N
20240813-01-UTC ech(1h)



Cross section E/W @ 17.5N
20240813-12-UTC ech(12h)



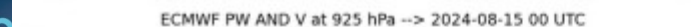
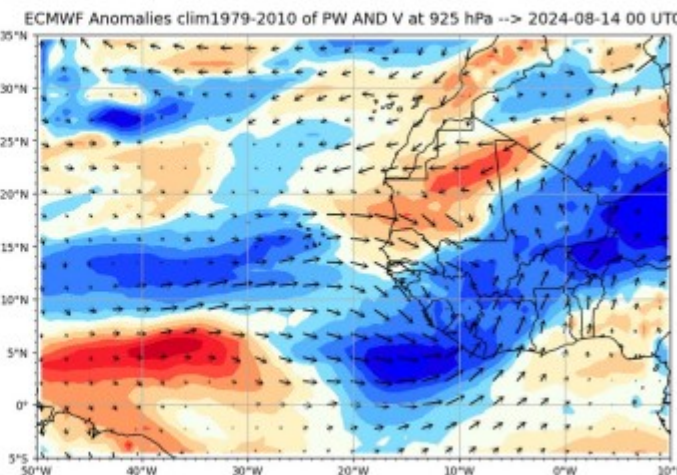
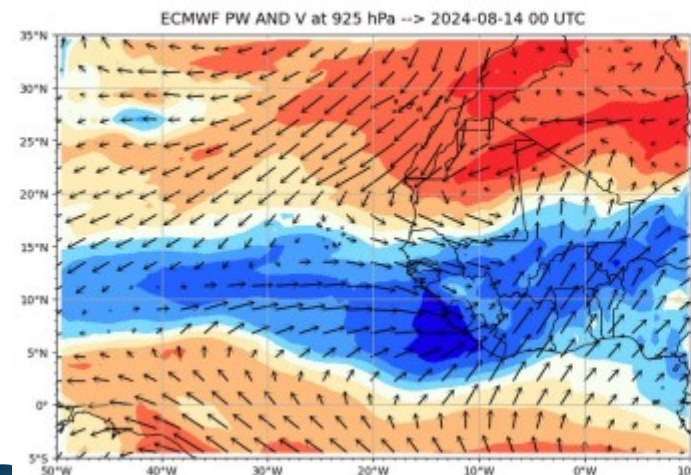
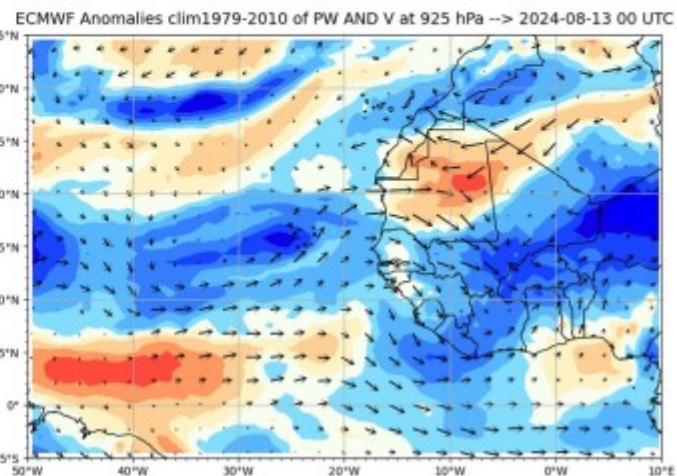
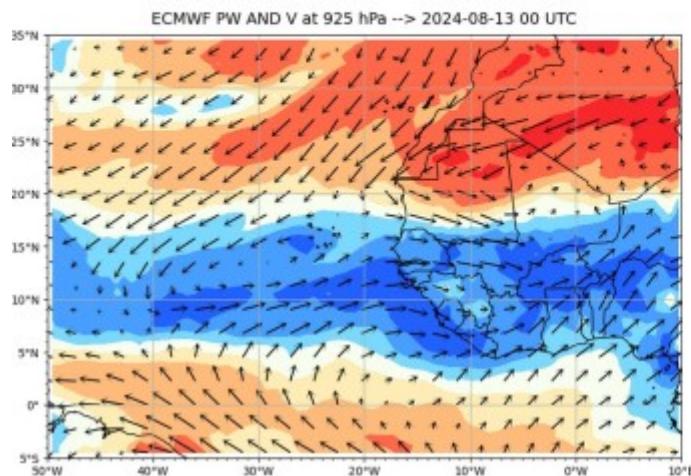
Longitude cross section @ 22W @ 12UTC



PW (color) and WIND @ 925 hPa total (left) and anomaly (right)

1st line : J @ 00 UTC

2nd line : J+1 @ 00 UTC



SUMMARY

PW = 46 mm (average)

Wind @ 920 hPa : westerlies : 2 m/s @ SAL, 6-9 m/s to the East

Wind @ 700 hPa : East/ South East 9 m/s (weak African Easterly Jet)

Typical environmental : African Eastely wave ridge

Base cloud : 300 m

Top cloud : 750 m

Orga : very shallow convection (1-3 octas)

No shower

Thanks to everybody !!!