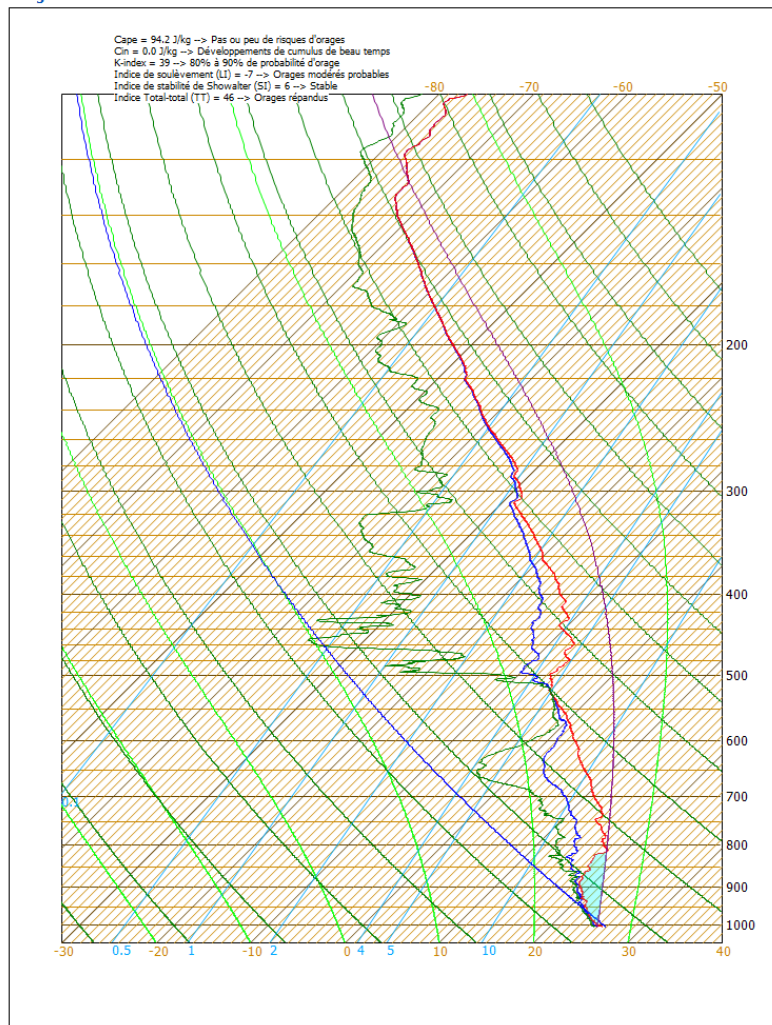
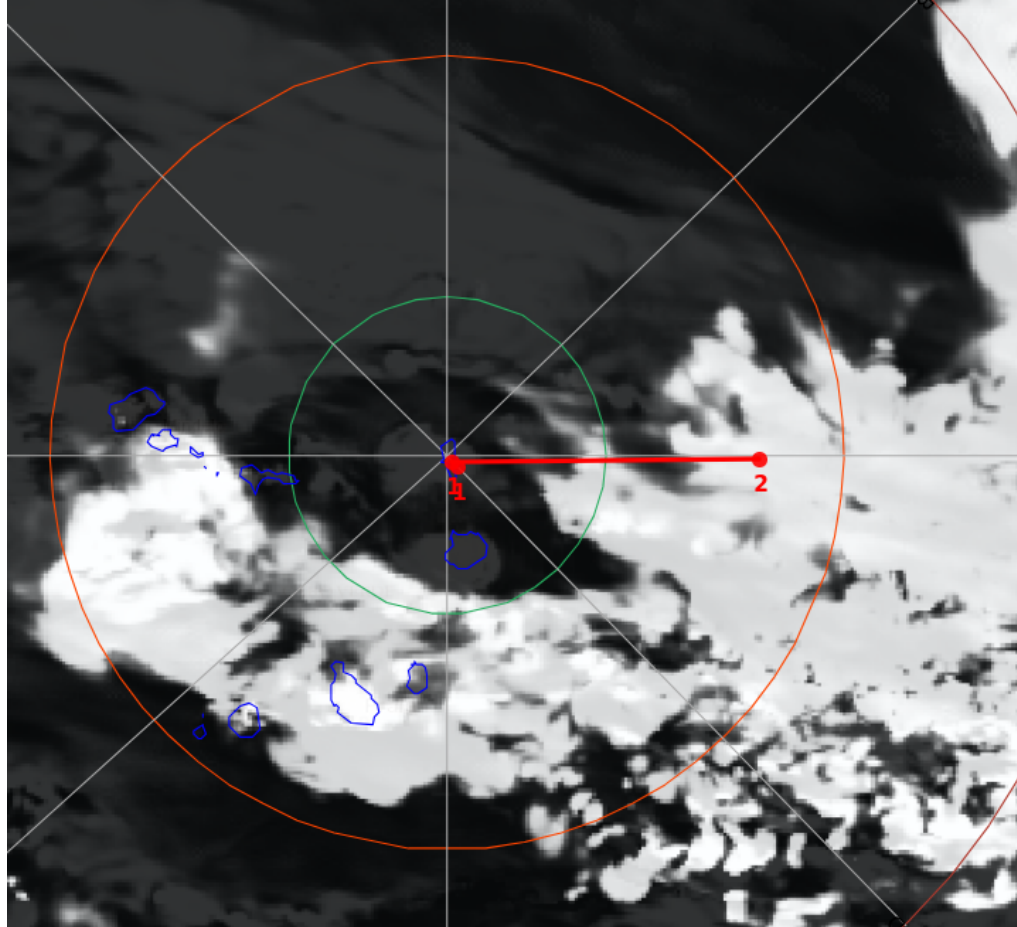


## Emagramme761

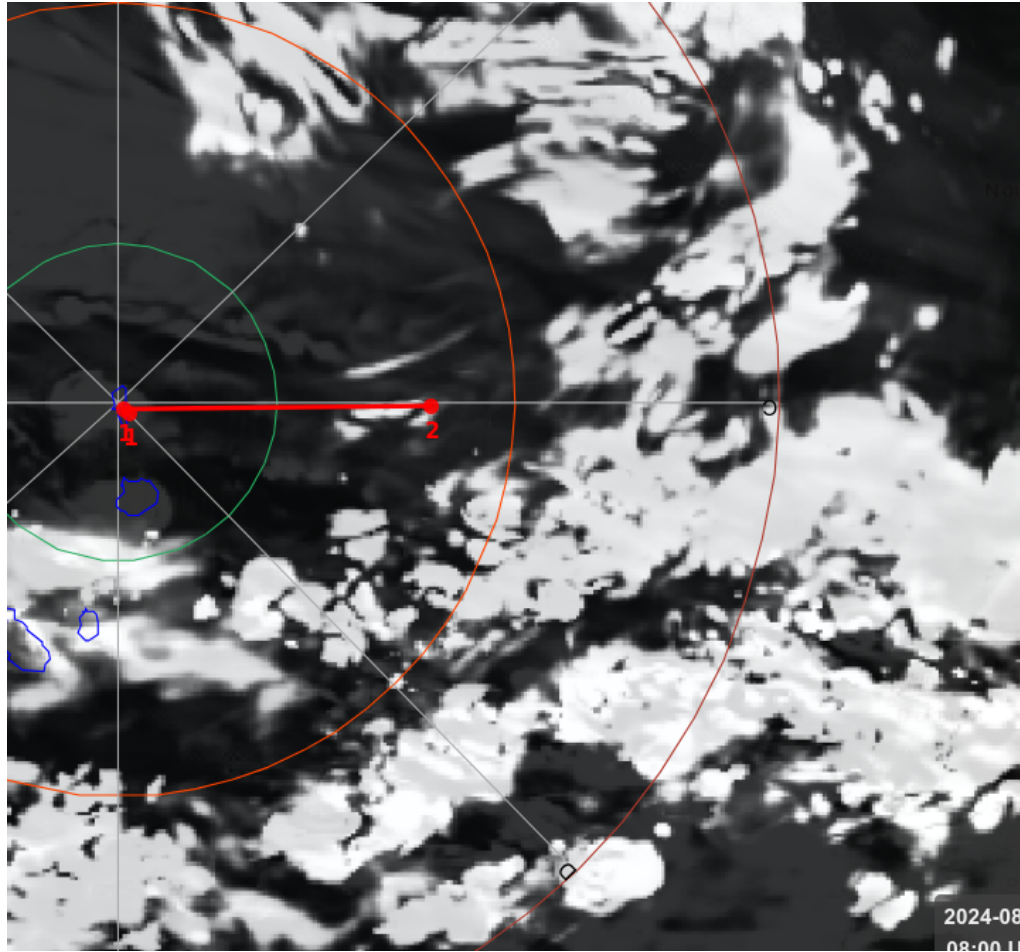


# Monday 19 August 16 UTC

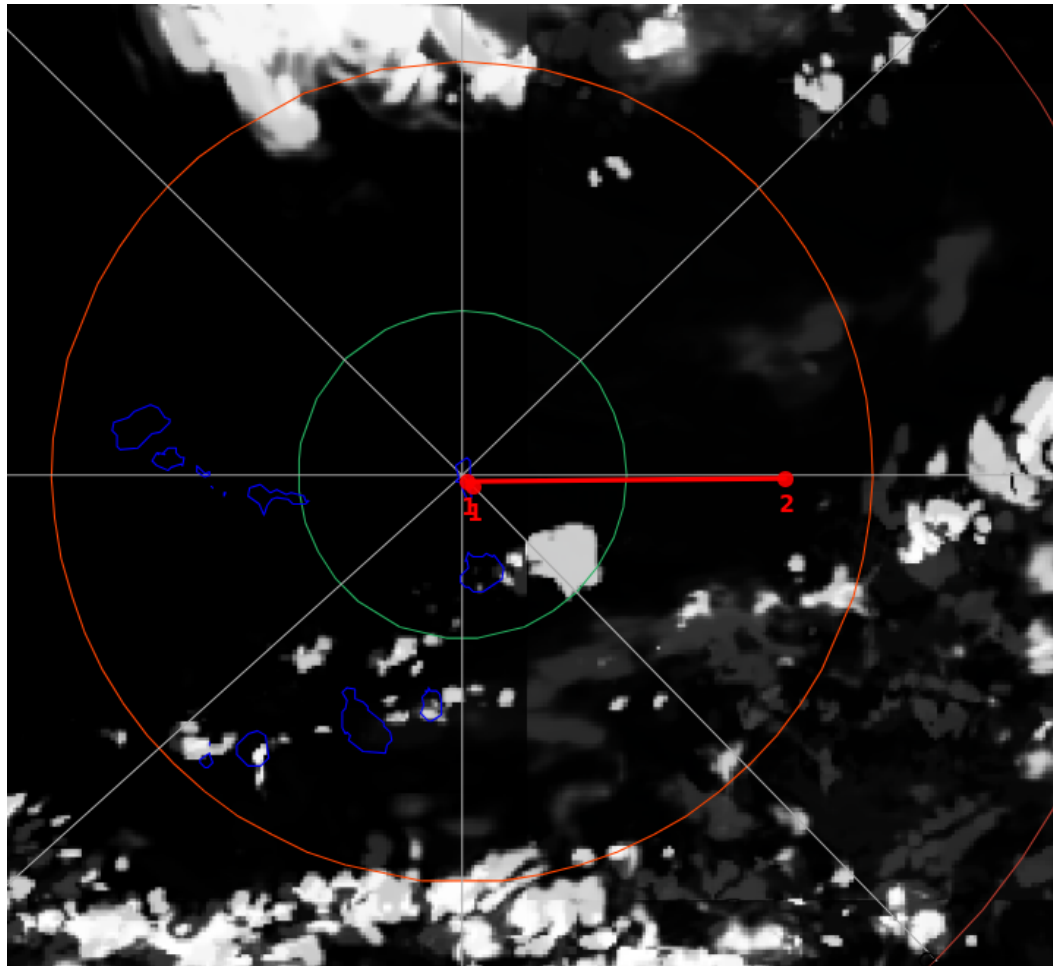
## Medium Cloud Cover [785-400hPa]



# MCC 20 august 08UTC



# MCC 20 August 1700 UTC



# Summary

## **Sunday 18 : Wave ridge**

- 700 hPa: SE, 6-9 m/s weak African Easterly Jet
- 925 hPa : light wind, doldrum , 2-4 m/s
- cloud base : 250 m
- cloud top : 600 m ~ 3-5 octas
- ⇒ shallow cloud + Cirrus possible - no deep Convection

## **Monday 19 : Ahead of the trough, afternoon flight would be better**

- 700 hPa : E, 9-12 m/s
- 925 hPa : w/nw , light wind, doldrum
- ⇒ Alto Cu : base 4000m – top 8000-12000m : ~ 7 octas , unstable to the south at mid levels
- East / SE-ward : transition shallow to deep expected, rain possible ~ 15N

## **Tuesday 20 : Within the vortex, morning flight advised**

- Clouds : within westerlies, low and mid clouds organisation **in the morning** dissipating eastward in the afternoon.