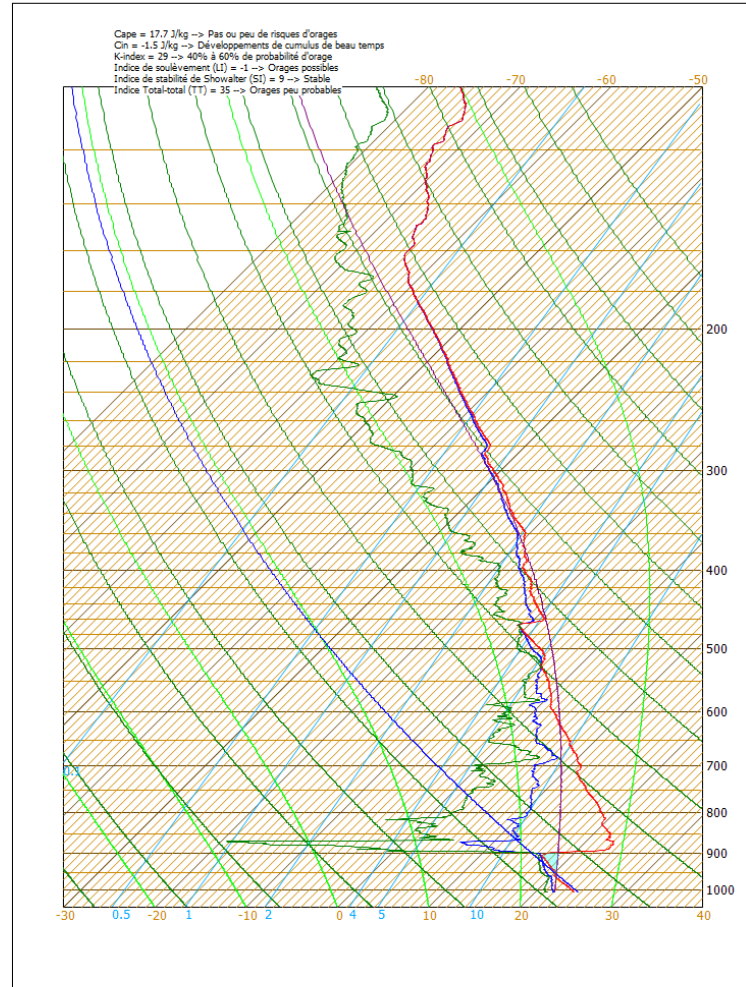


Emagramme761



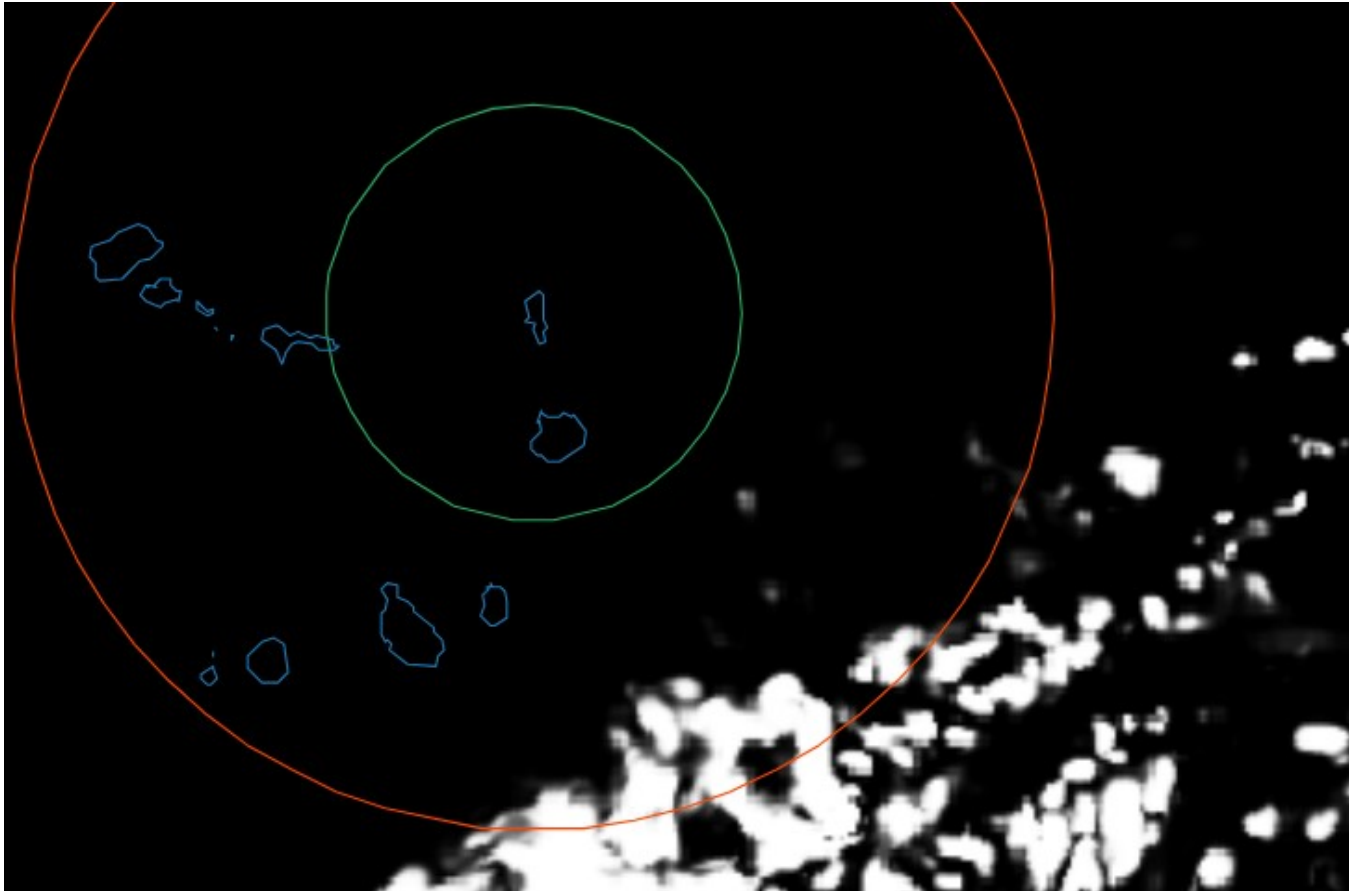
Données sol: 1005.2 hPa Altitude: 54m
Max altitude: 23318m Ascension: 5.0m/s Duration: 78 minutes
26/08/24 04:35:30

this morning
@ 06UTC

C:\Escan\Data\2024\18A2024082606_1

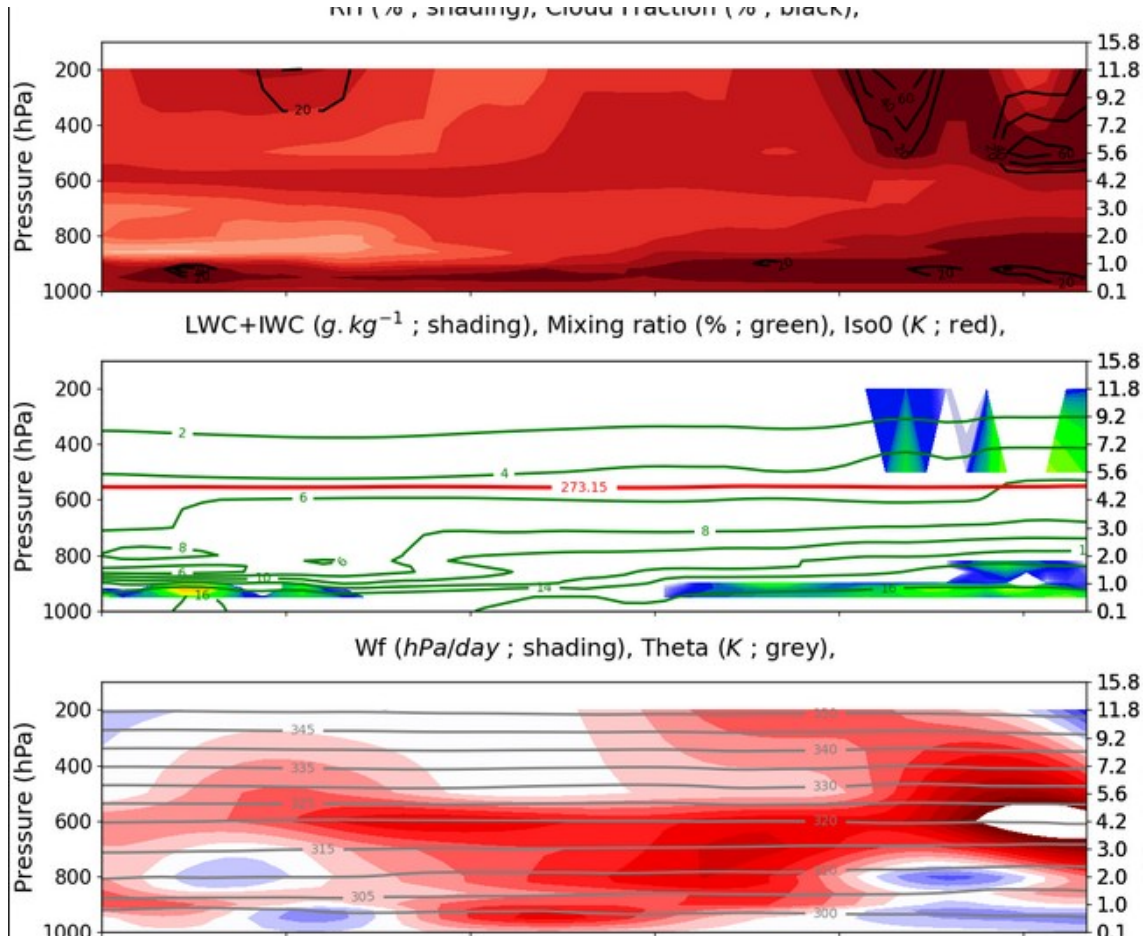
Monday 26th 14 UTC

Mid cloud [785-400 hPa]

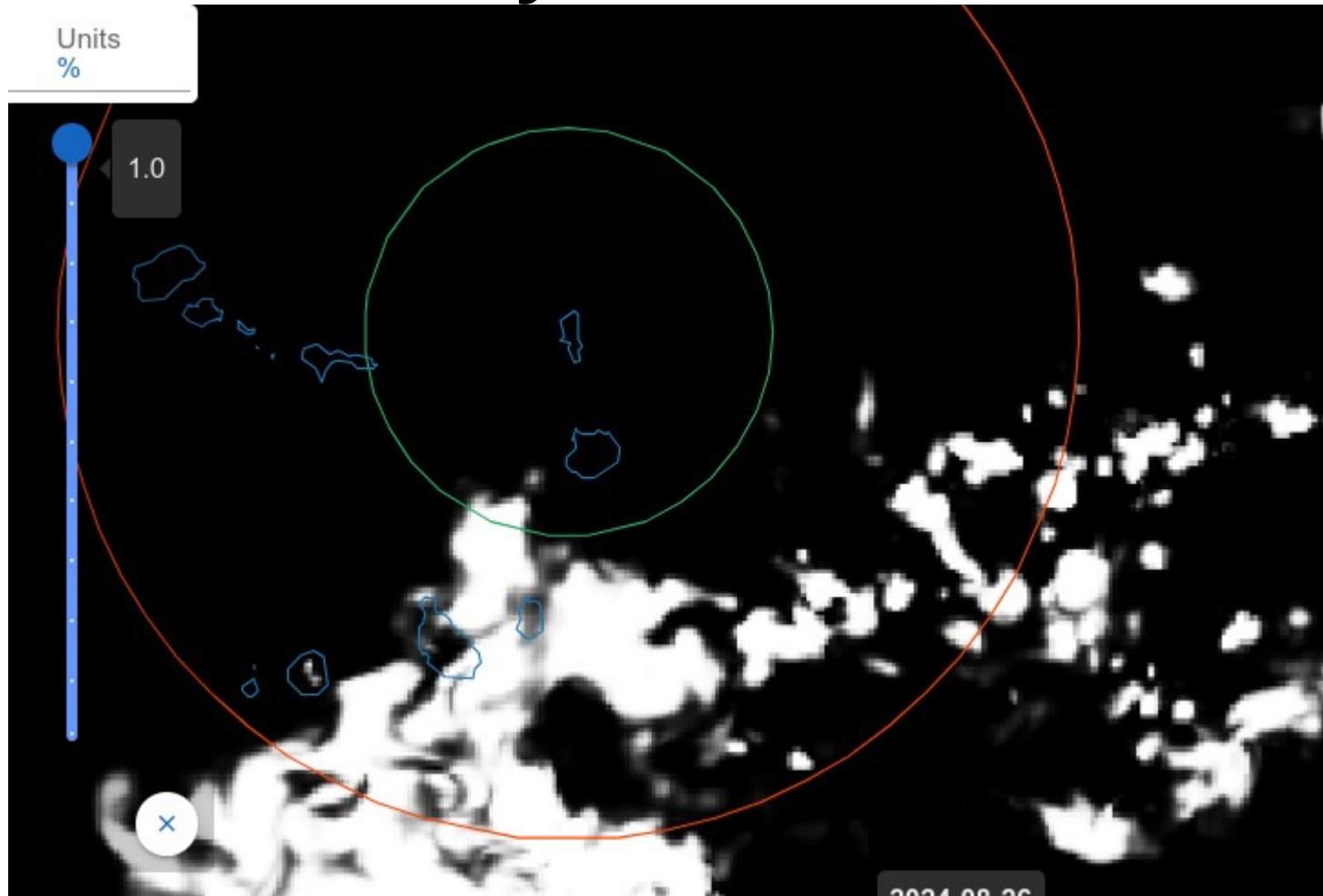


Monday 26th 14 UTC

cloud fraction/ LWP/ Vertical velocity



Monday 26th 19 UTC

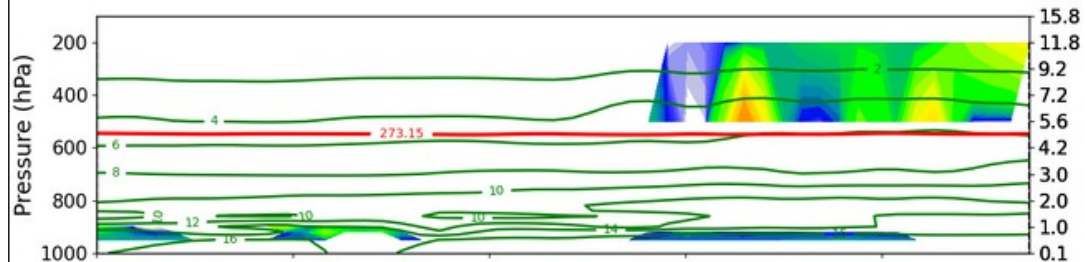


Monday 26th 19 UTC

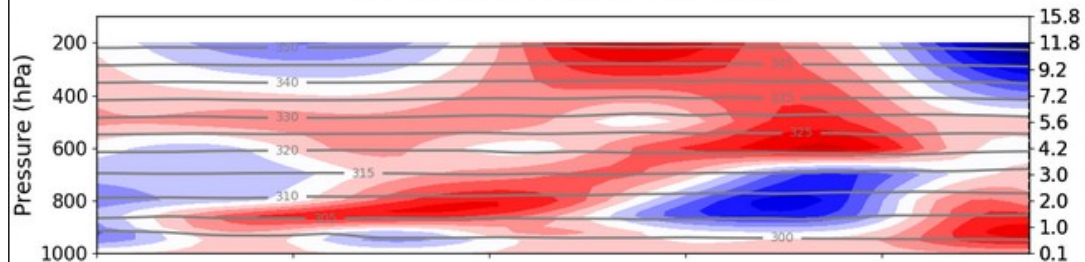
ATR cross section as yestearday night



LWC+IWC ($g \cdot kg^{-1}$; shading), Mixing ratio (%) ; green), Iso0 (K ; red),

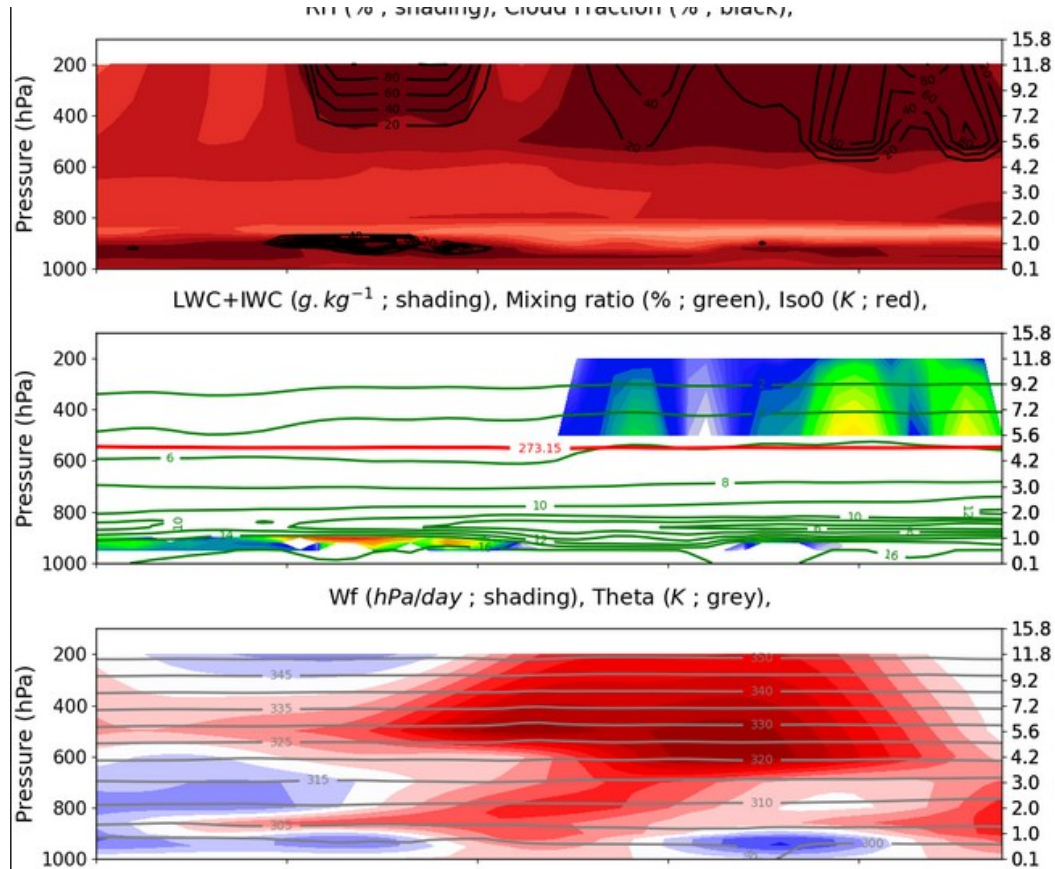


Wf (hPa/day ; shading), Theta (K ; grey),



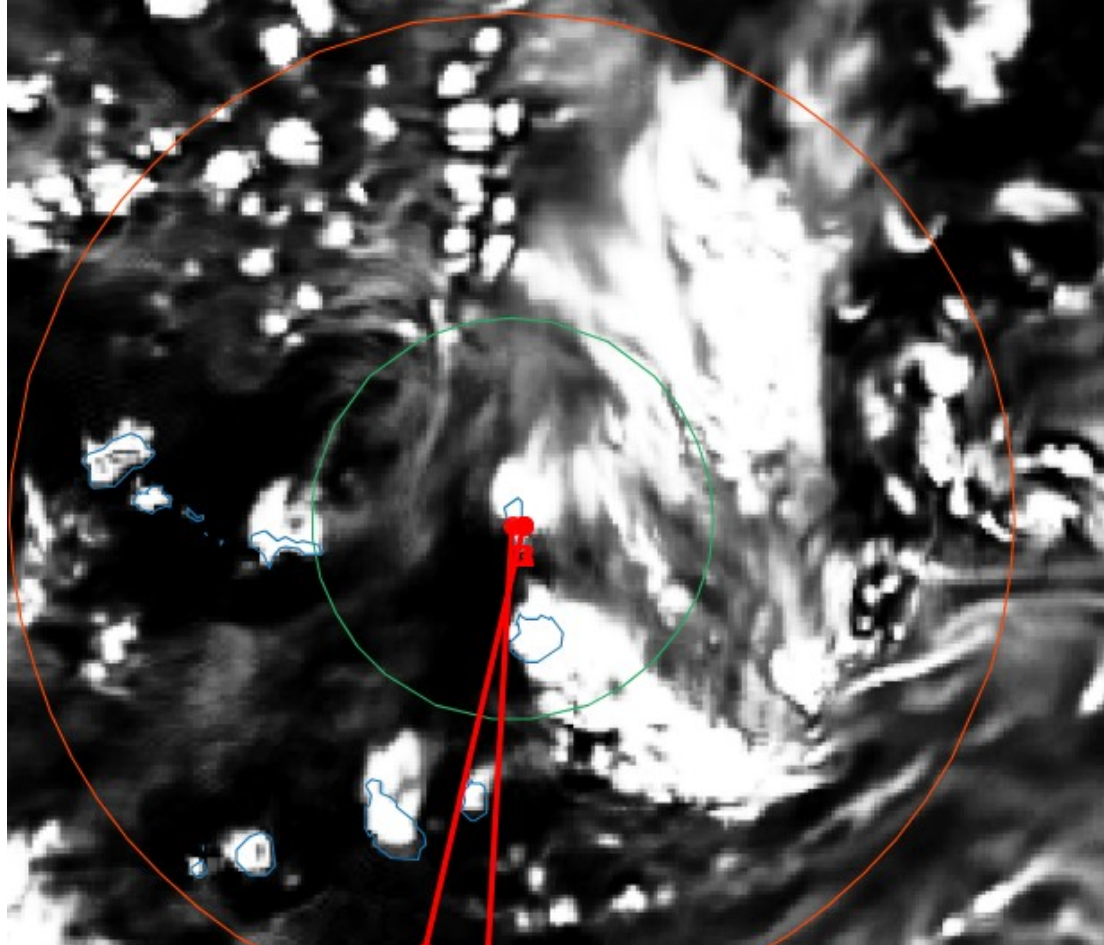
er height, Cloud base height, Average Mixing ratio, Average mixed layer height, Cloud base hei

Monday 26th 19 UTC cross section towards Praia)



er height, Cloud base height, Average Mixing ratio, Average mixed layer height, Cloud base hei

Low cloud cover (up to 785 hPa) 27 August 17 UTC



Summary

Monday 26 th 1rst ATR flifgt: deep convection
southeastwards of SAL (300 km away from SAL)

Monday 26th 2nd flight : cumulus congestus (deep?)
south of SAL (~150 km away from SAL)

27 th and 28th 29th 30 th: behind the trough : shallow
convection with stratocumulus and drizzle

1rst september afternoon: ahead of of new African
wave