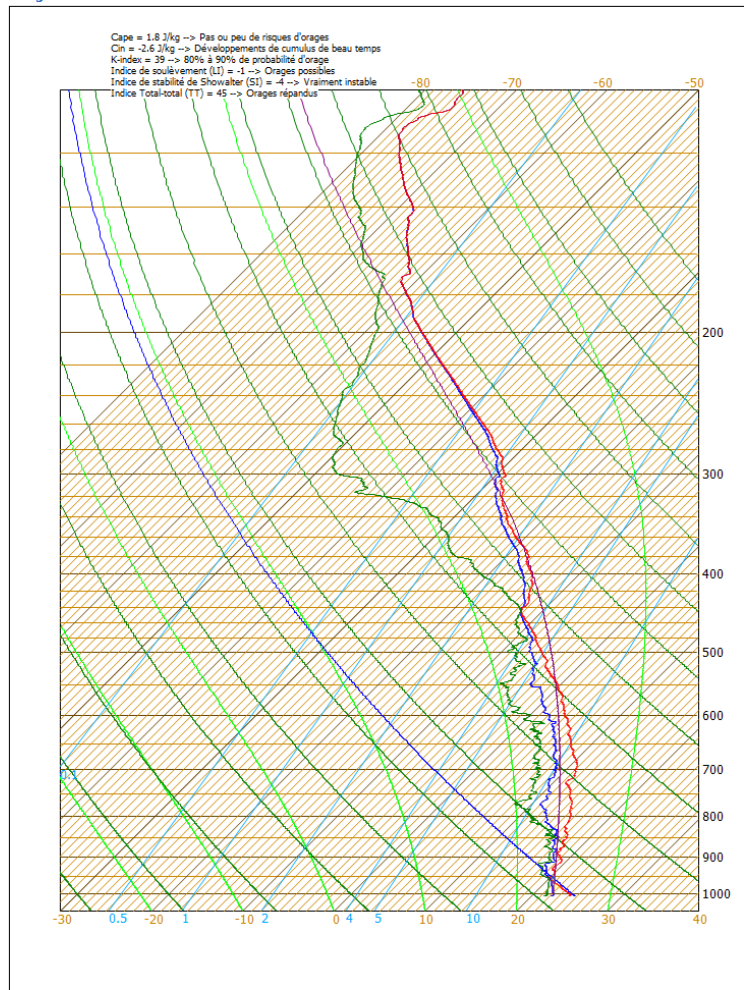


Summary 27/08/2024

- soundings
 - windy
- AROME – coupe verticale

Emagramme761



Sounding
27/08/2024 06Z

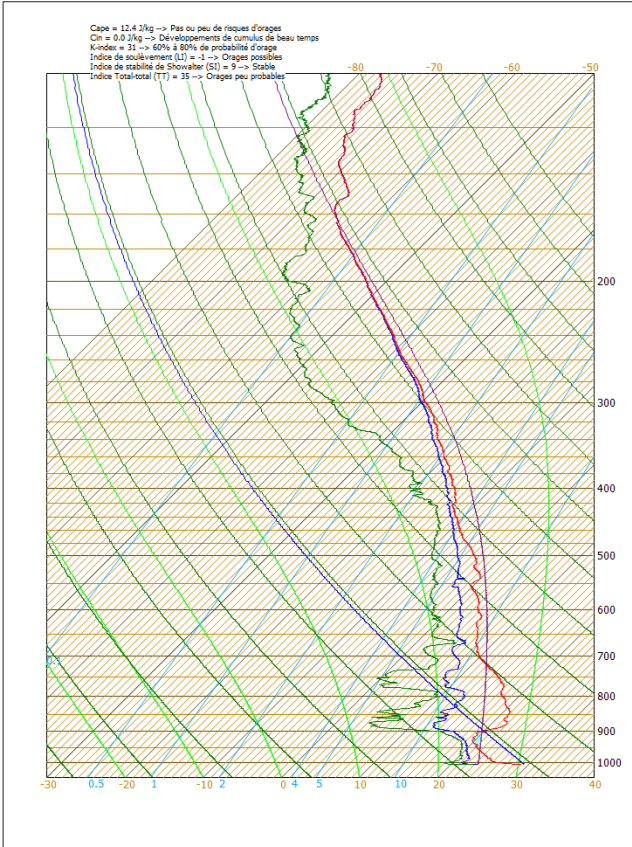
A priori stronger
Inversion this
afternoon

C:\Espace\Données\2024\ASAC\20240827\06_1

SAL 26/08/2024 16:38



Emagramme761

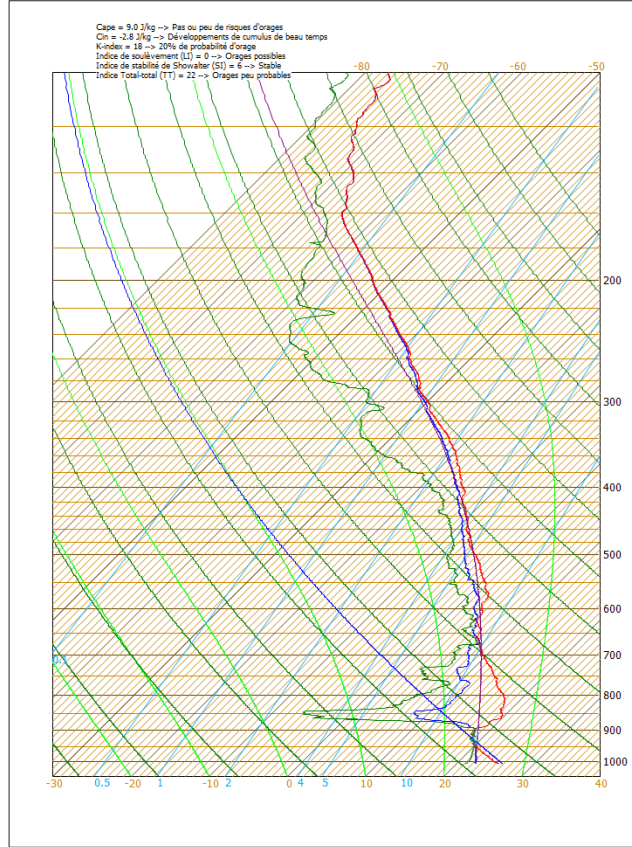


Données sol: 1004.3 hPa Altitude: 54m
Max altitude: 26366m Ascension: 4.3m/s Duration: 102 minutes
26/08/24 16:38:07

SAL 26/08/2024 19:38



Emagramme761

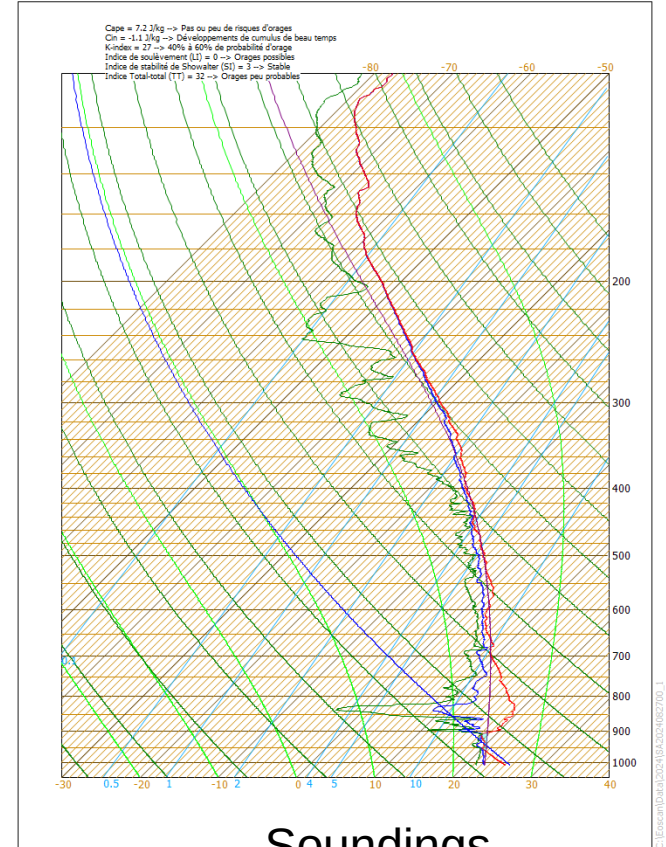


Données sol: 1005.4 hPa Altitude: 54m
Max altitude: 23068m Ascension: 4.9m/s Duration: 78 minutes
26/08/24 19:38:21

SAL 27/08/2024 22:36

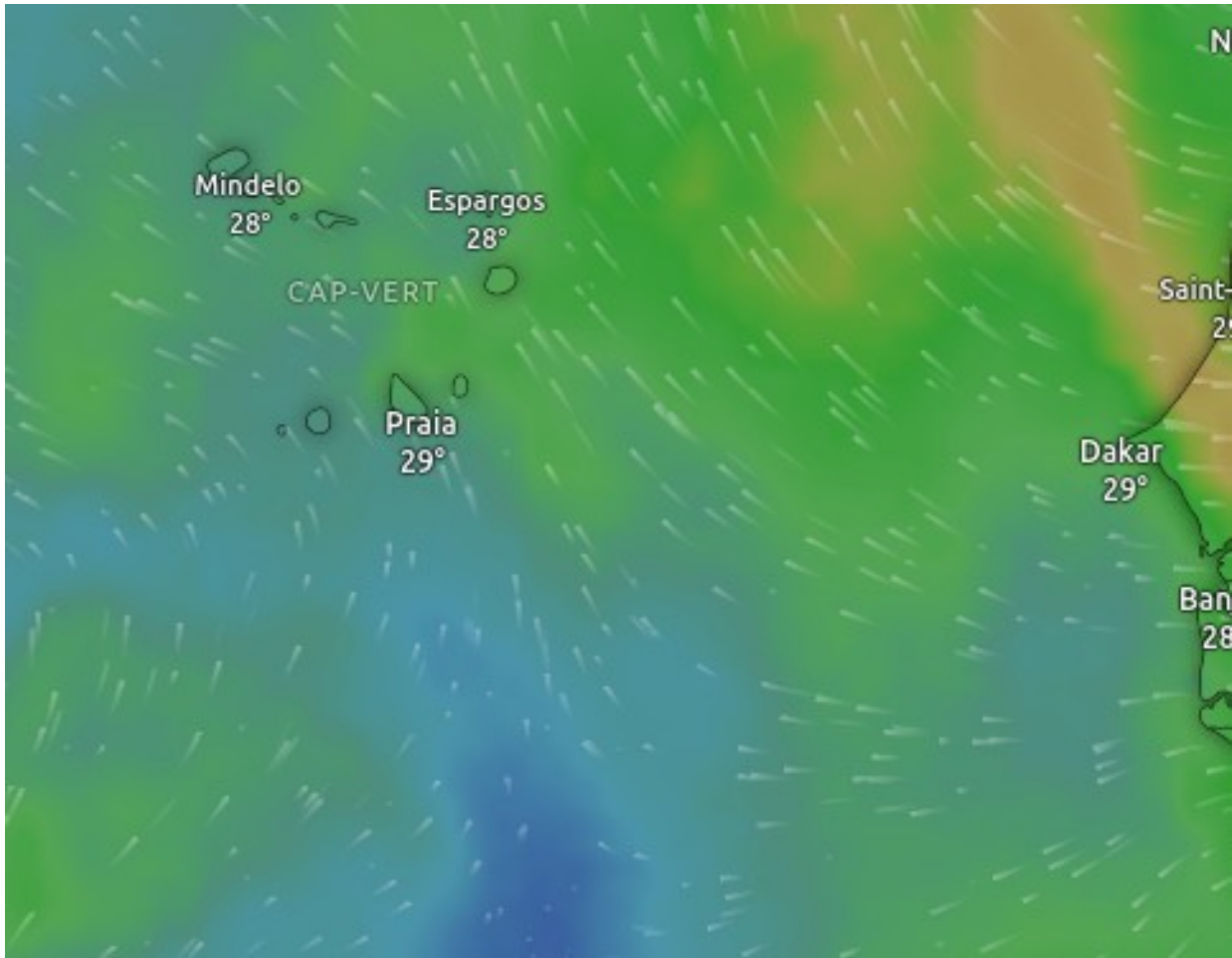


Emagramme761



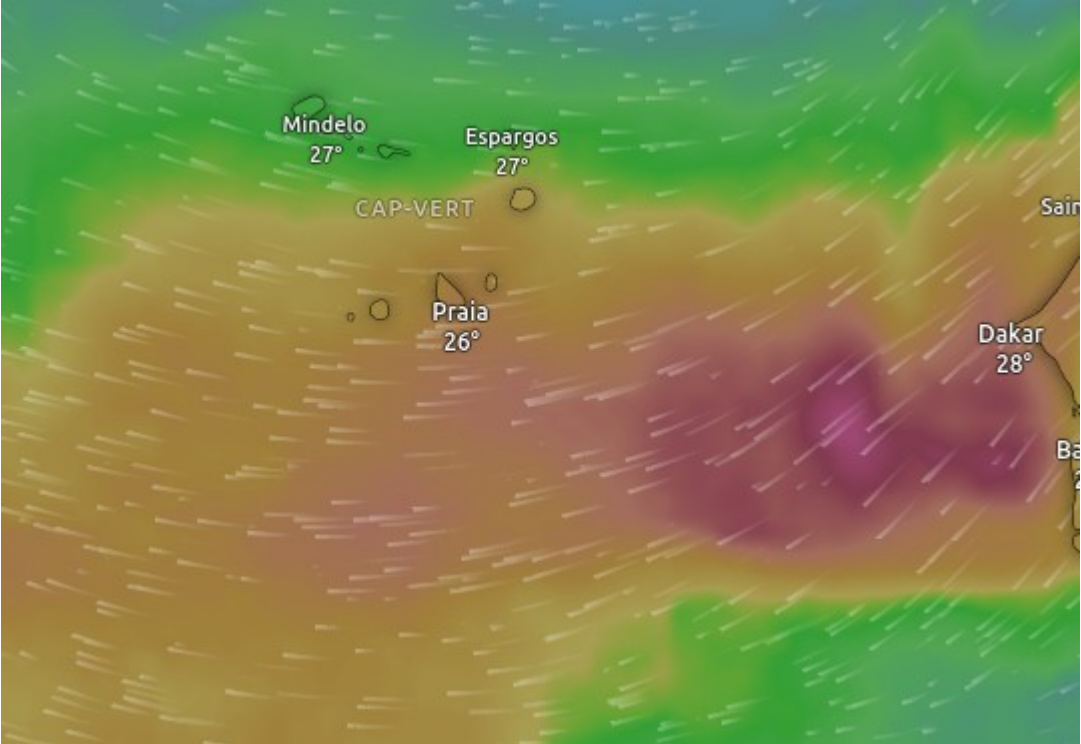
Données sol: 1007.4 hPa Altitude: 54m
Max altitude: 23075m Ascension: 5.0m/s Duration: 95 minutes
26/08/24 22:36:20

Soundings
26 18Z/21Z +27 00Z

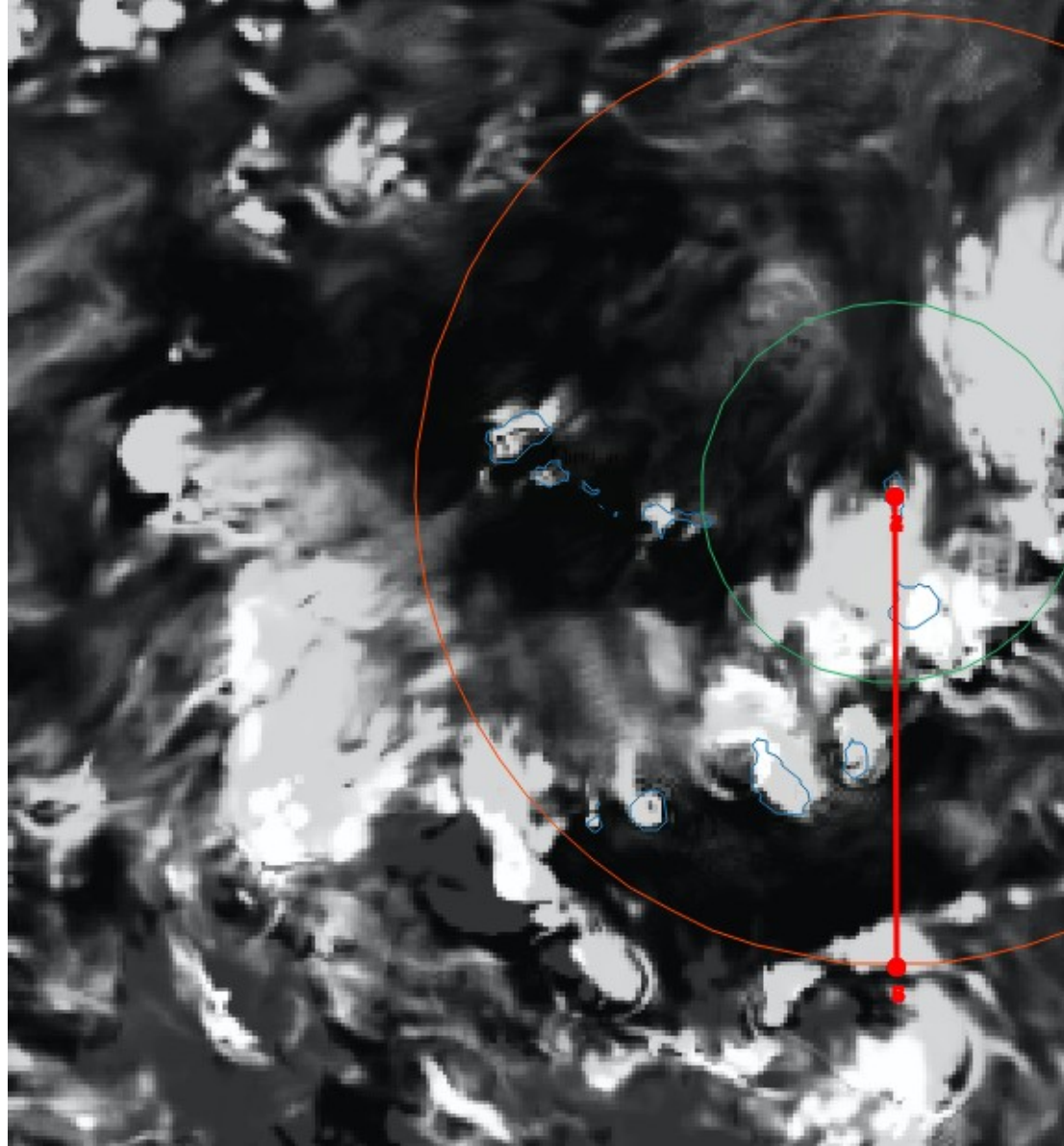


Windy
V700h
27 -18Z

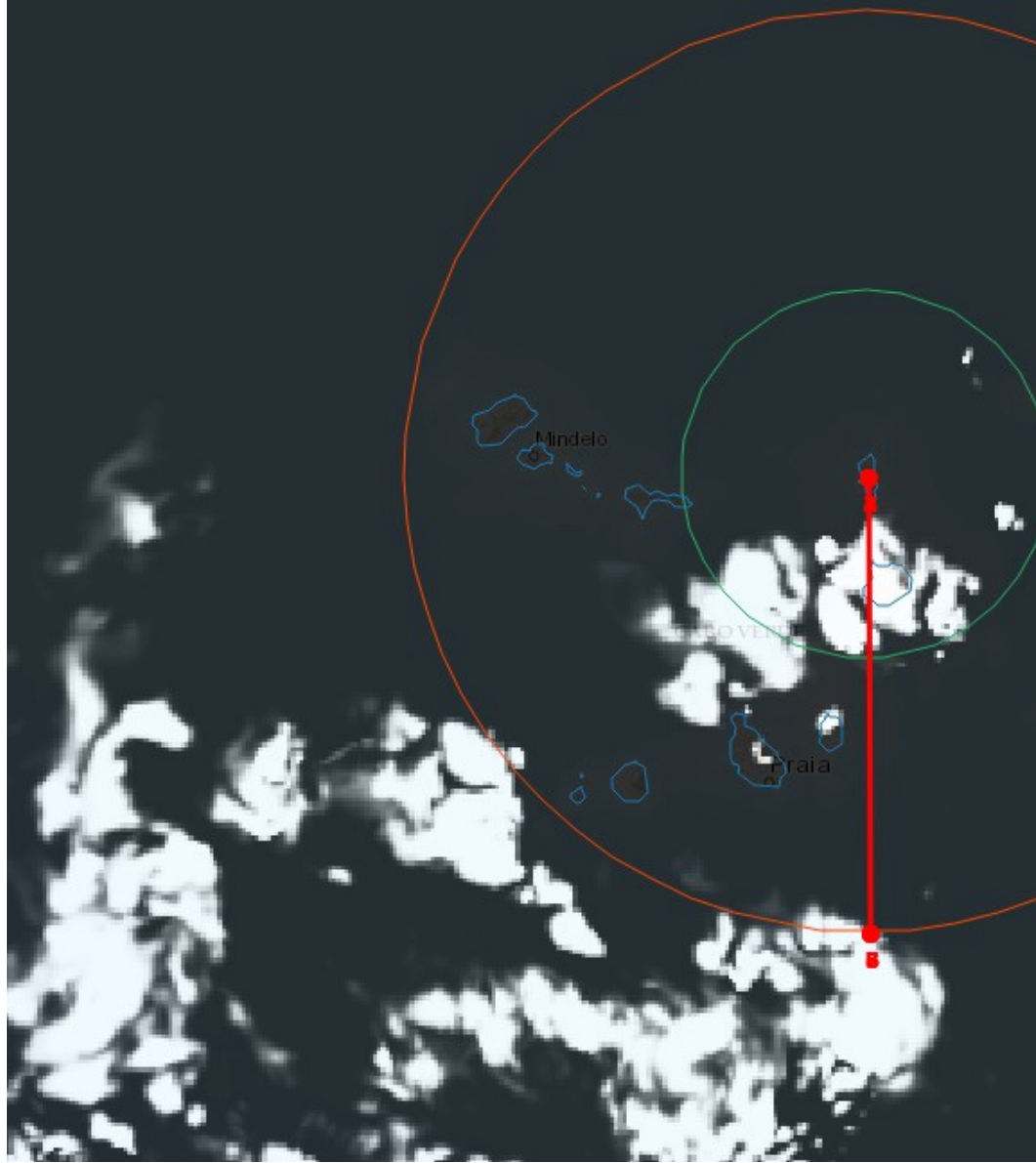
Windy
V700h
29 -12Z



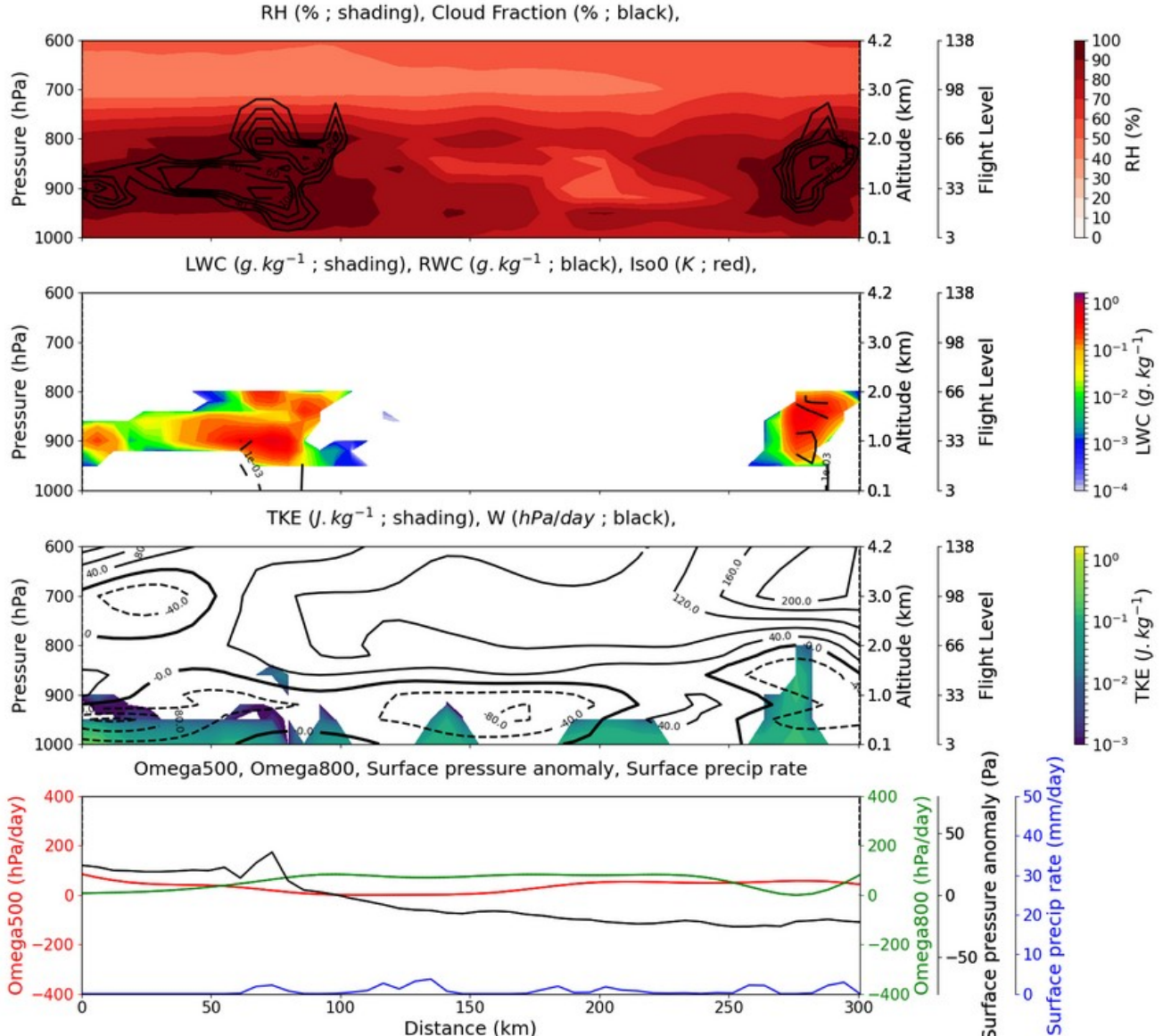
Low Cloud
Cover at 27/08
18Z

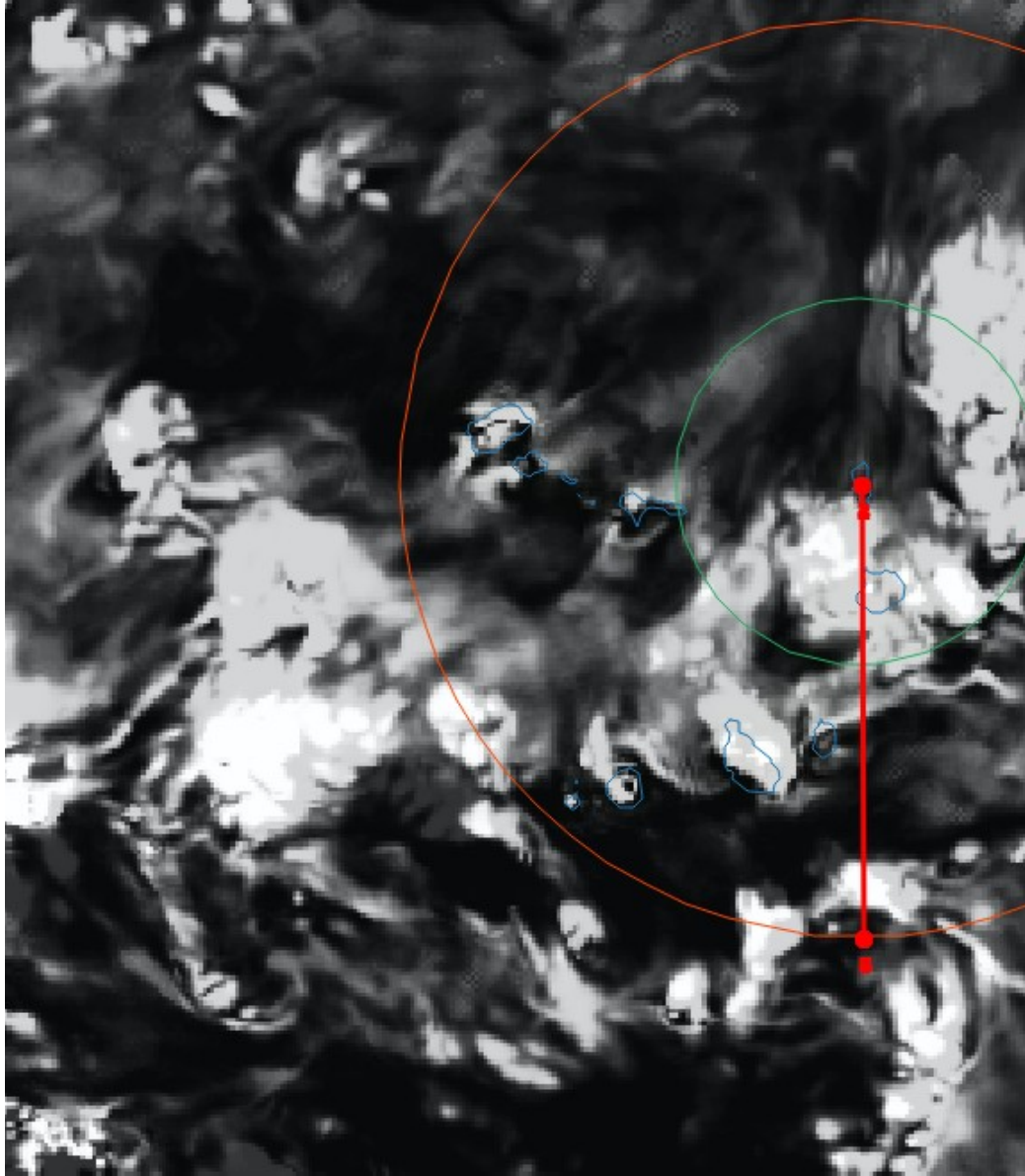


Medium Cloud
Cover at 27/08
18Z



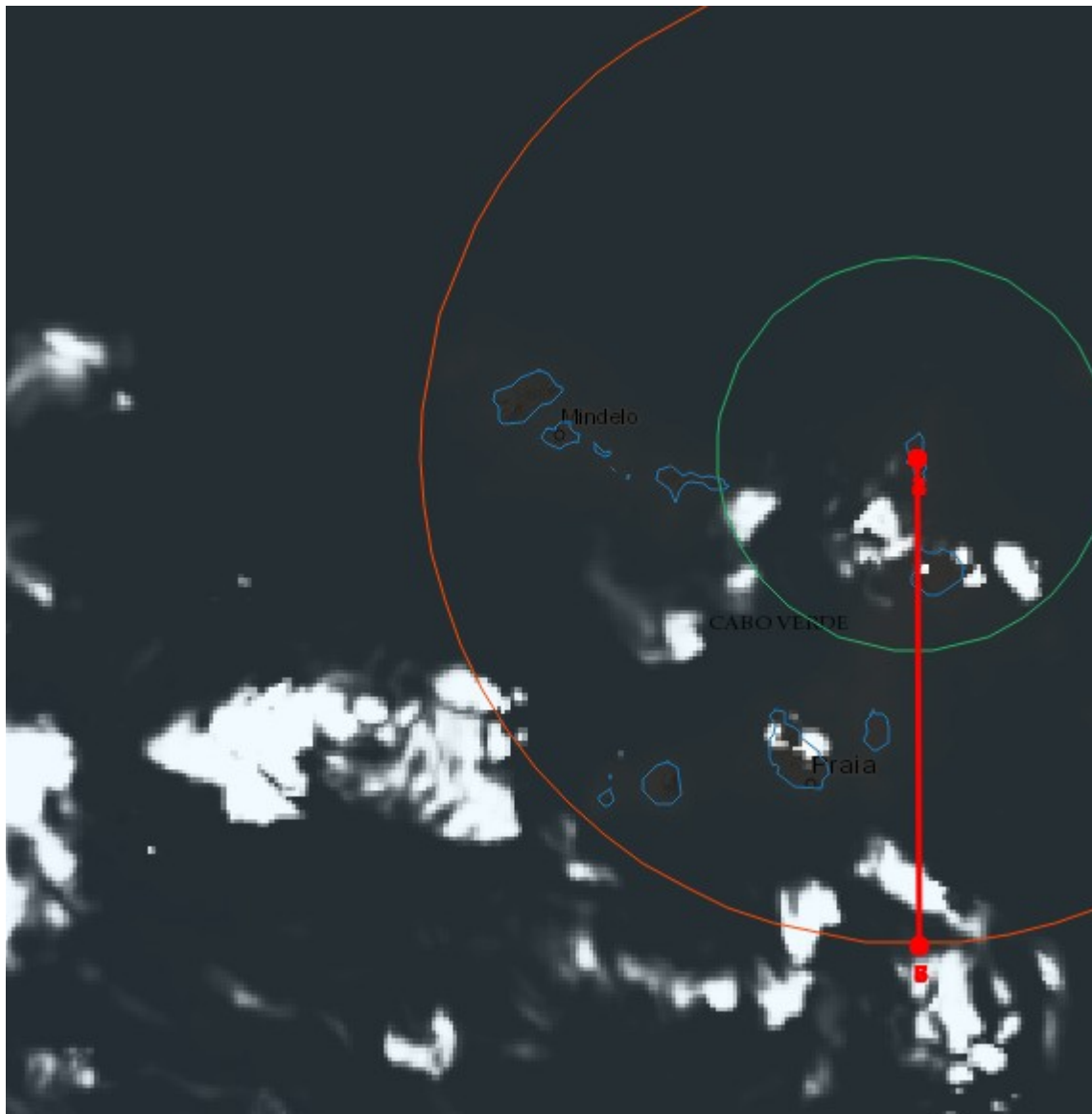
Vertical cross-section at 27/08/2024 18Z North-South



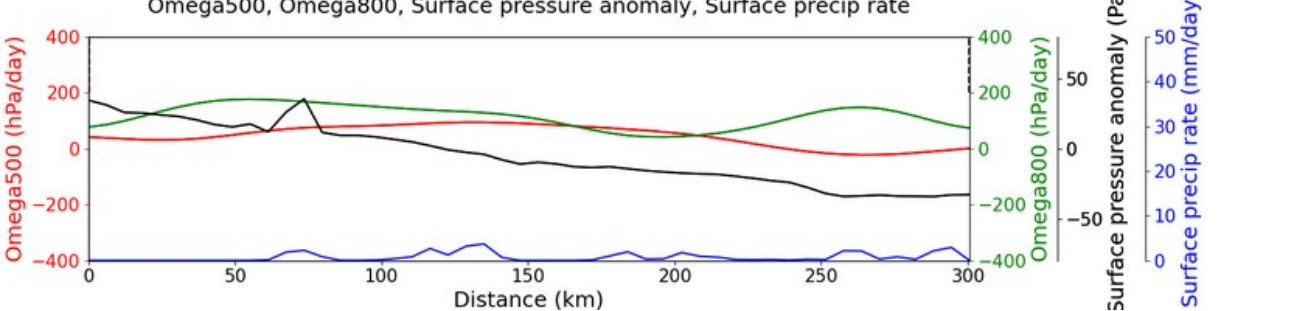
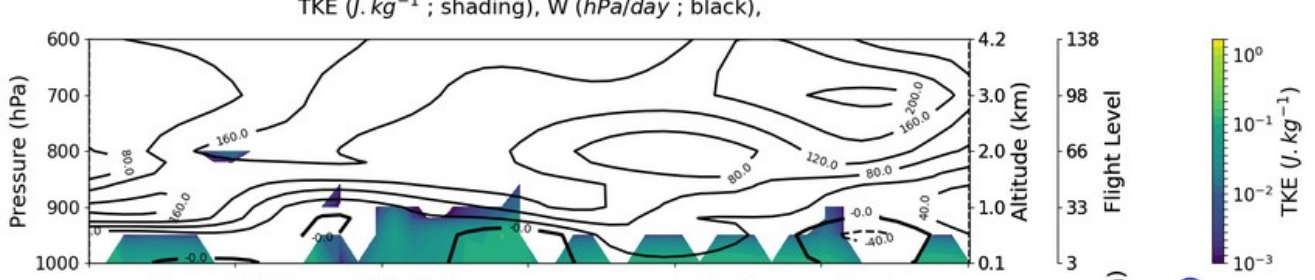
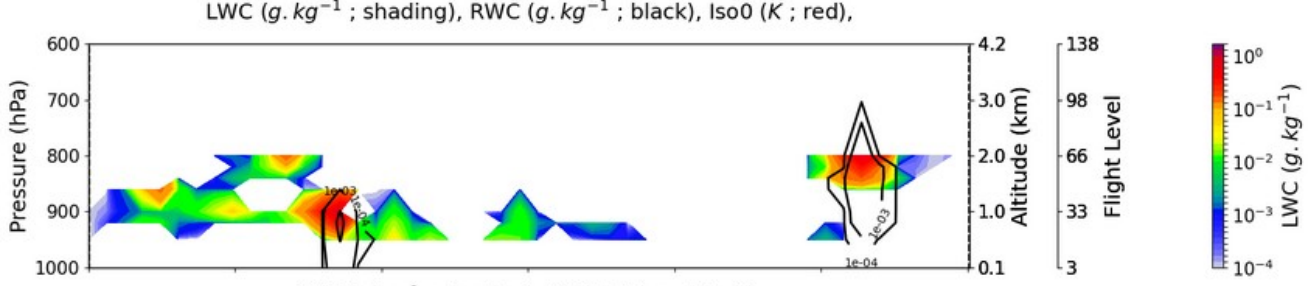
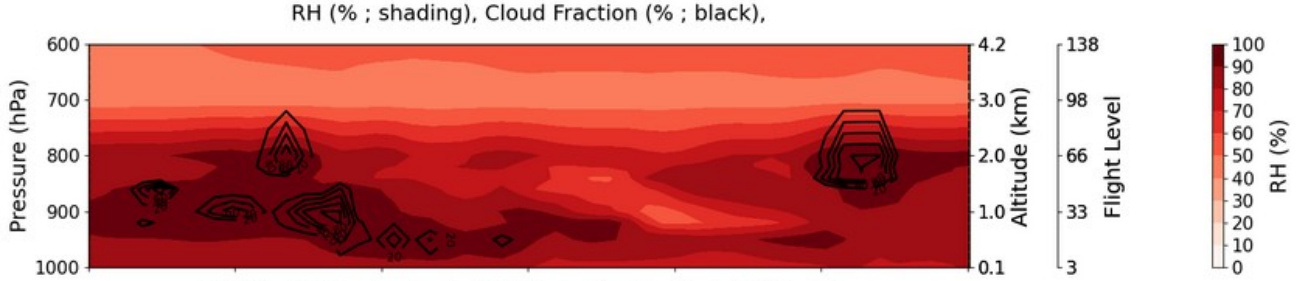


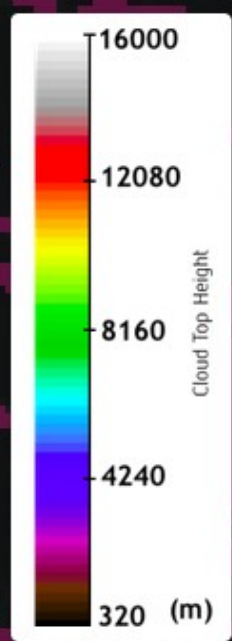
Low Cloud
Cover at 27/08
20Z

Medium Cloud
Cover at 27/08
20Z



Vertical cross-section at 27/08/2024 20Z North-South





0.8



From 2024-08-26 20:00 UTC



2024-08-27

08:00 UTC

Summary

27th August : shallow convection : cu/sc relatively deep (top ~ 3000m)

28th August : behind the trough – strong AEJ – shallow convection

29th,30th, 31st August : behind the trough – strong AEJ - shallow convection TO BE DETAILED LATER

1st September : arrival of a new Easterly African Wave (slightly ahead of the trough at 12Z)