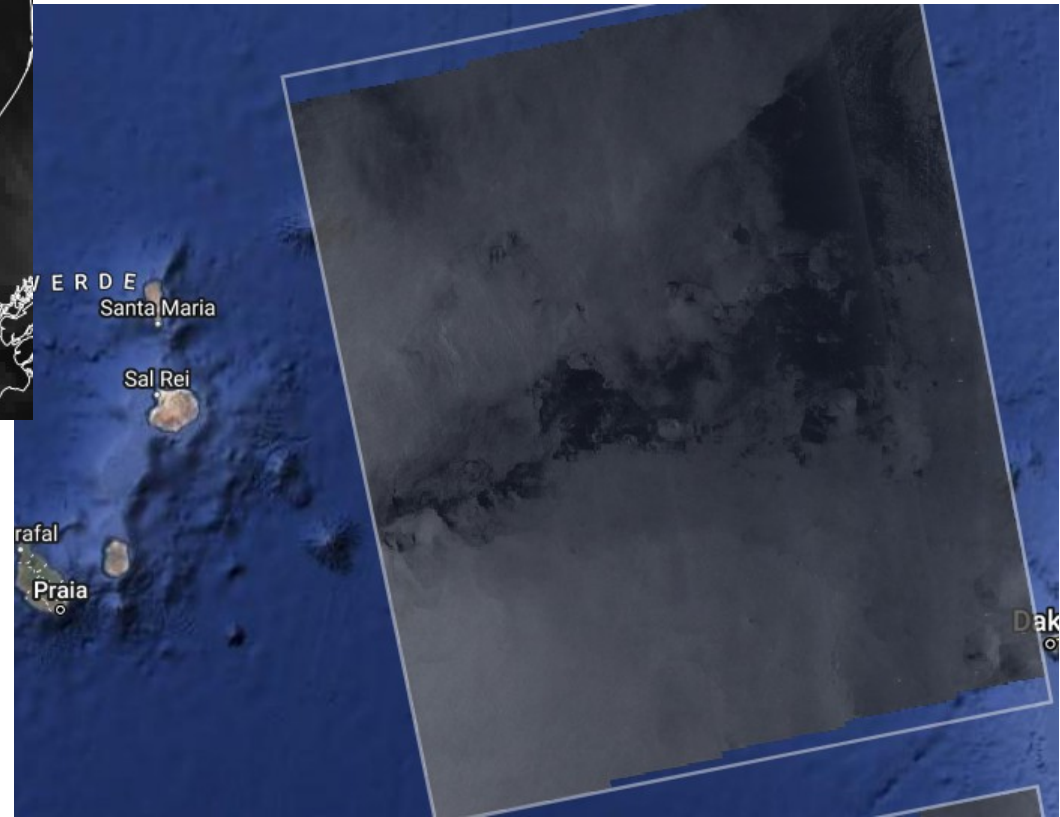
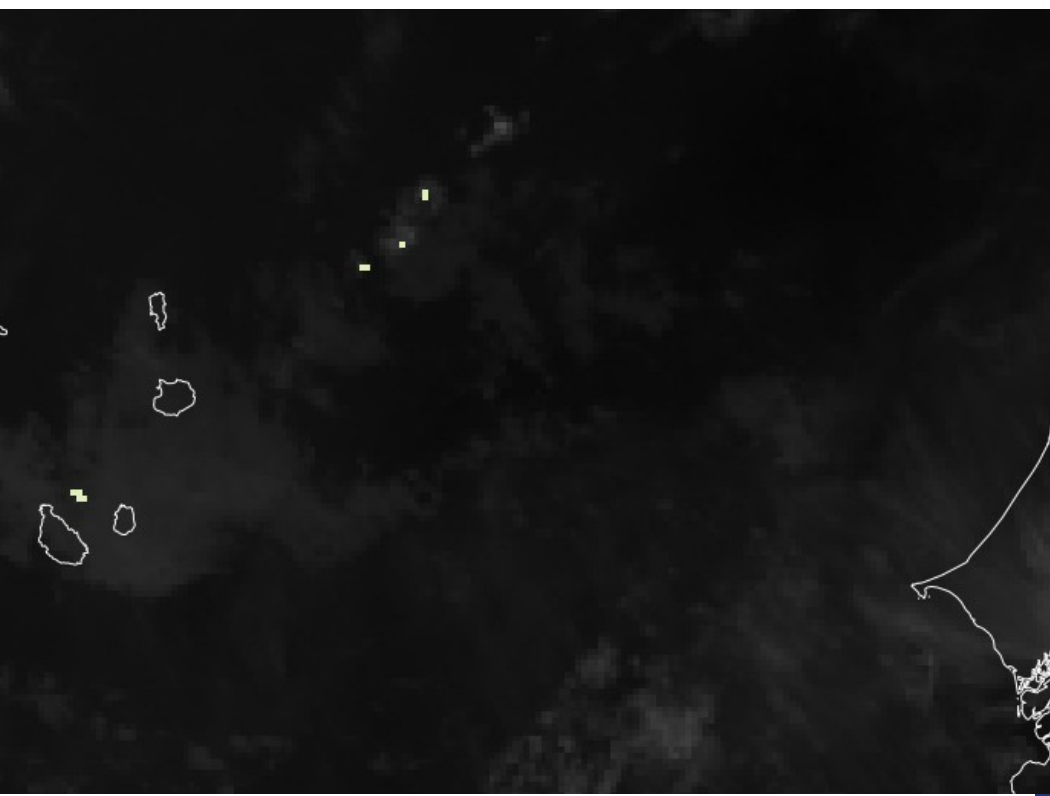


Summary 29/08/2024

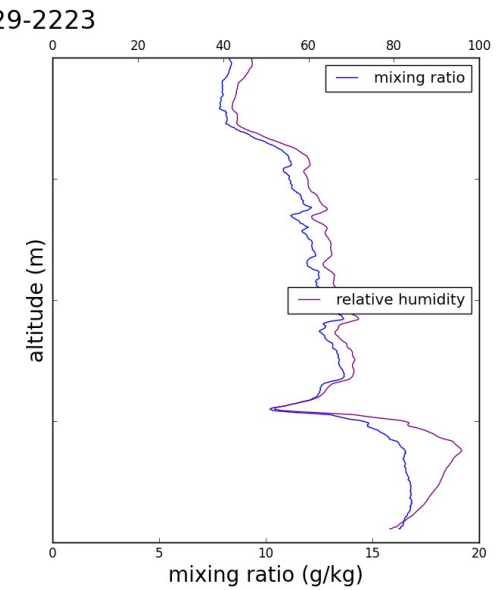
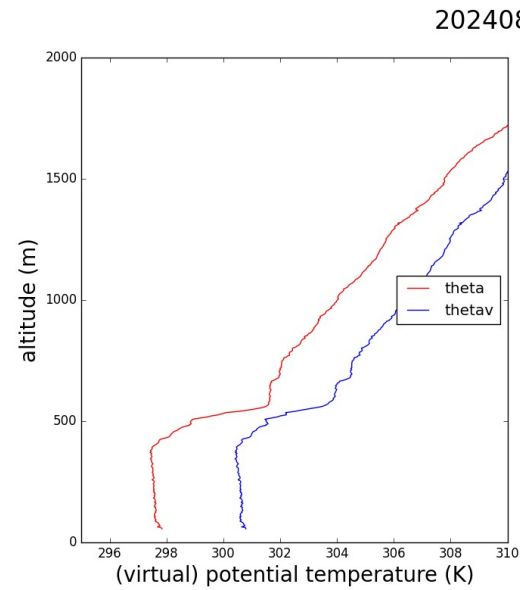
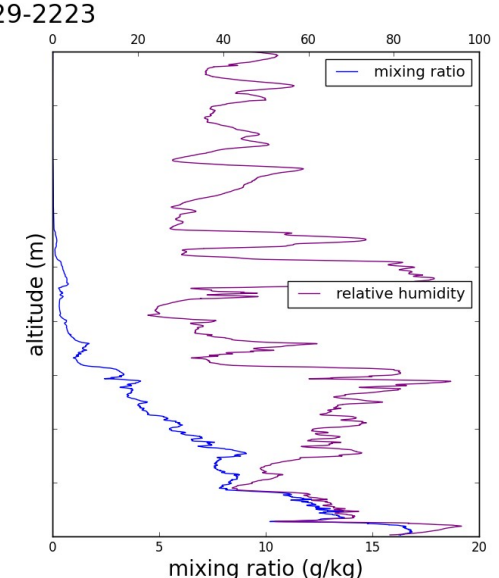
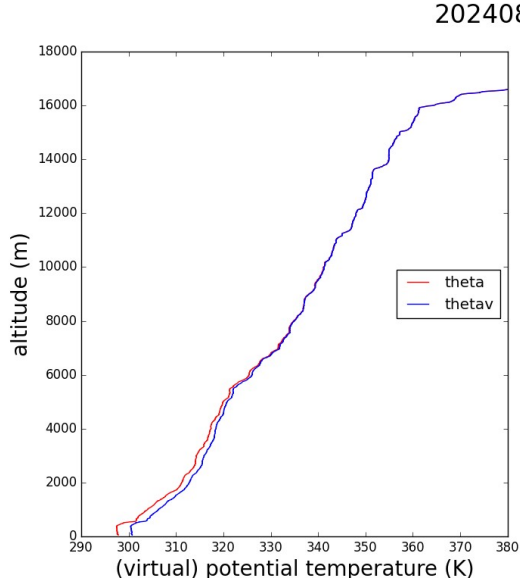
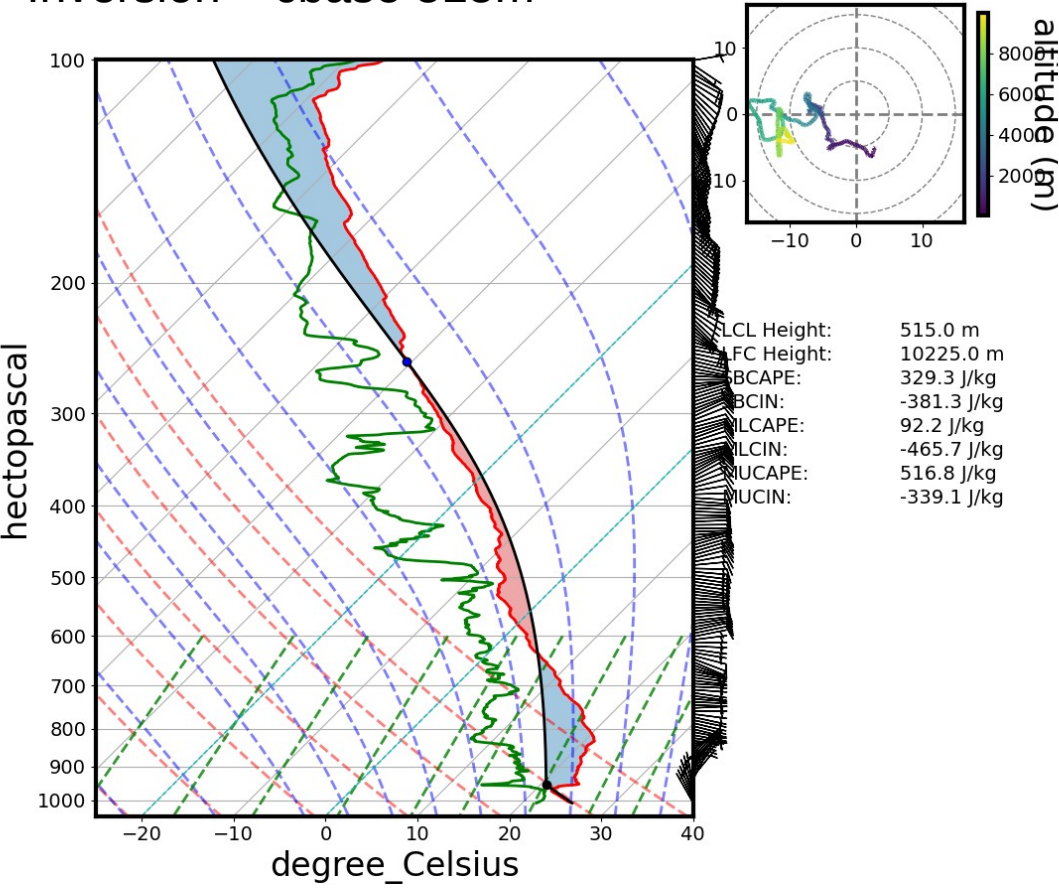
- SAR 27/08
- soundings
- AROME – vertical cross sections
- further Ahead with MISVA products

MSG-IR 27/08/2024 1930Z
SAR – roughness length



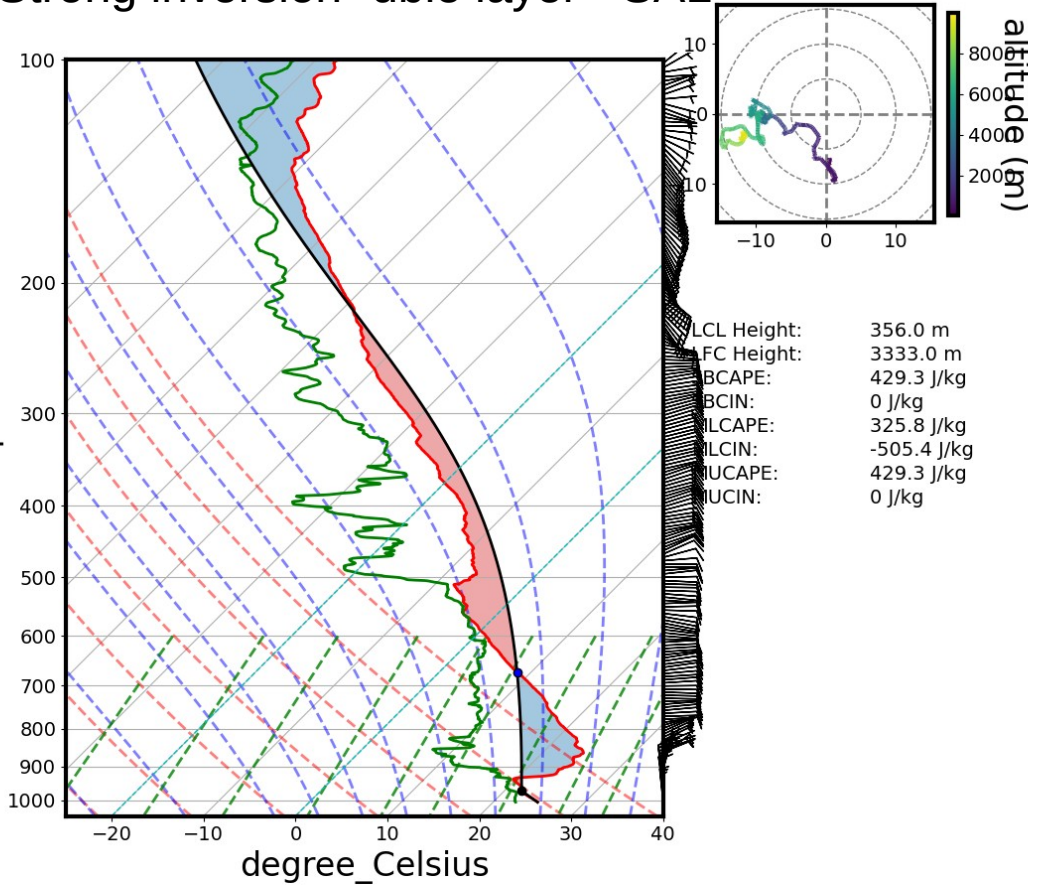
Sounding

29/08/2024 00Z
 Inversion – cbase 515m

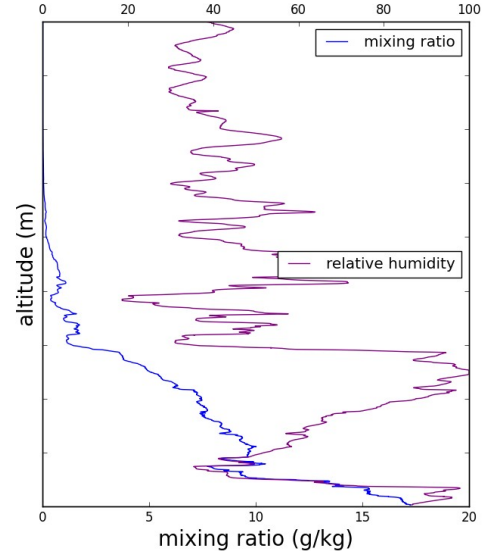
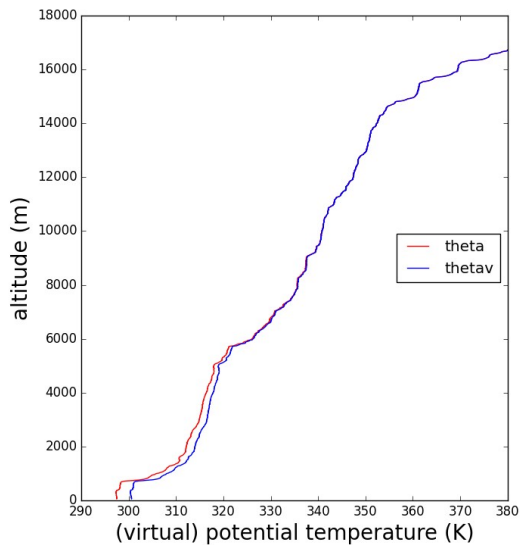


Sounding
29/08/2024 06Z

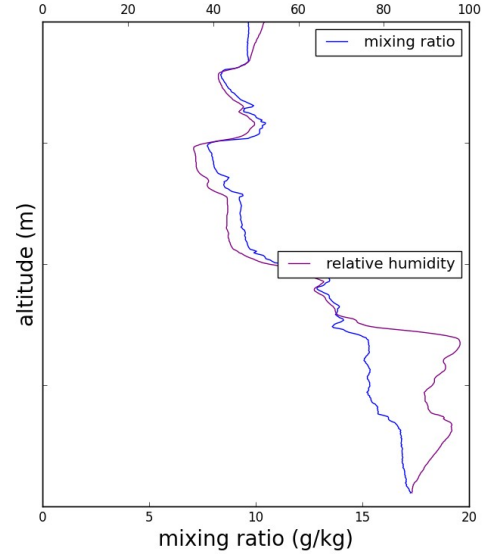
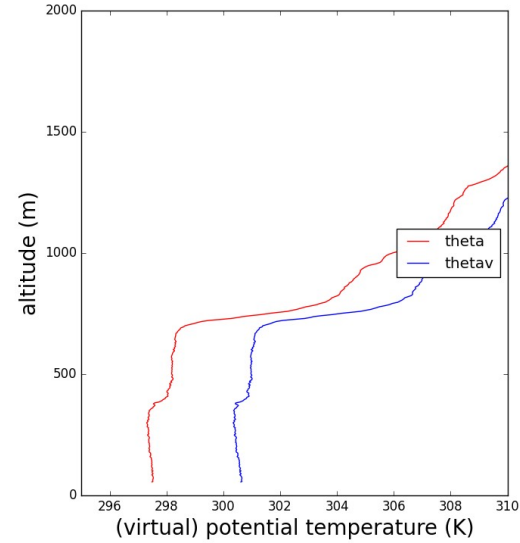
Strong inversion -dble layer - SAL



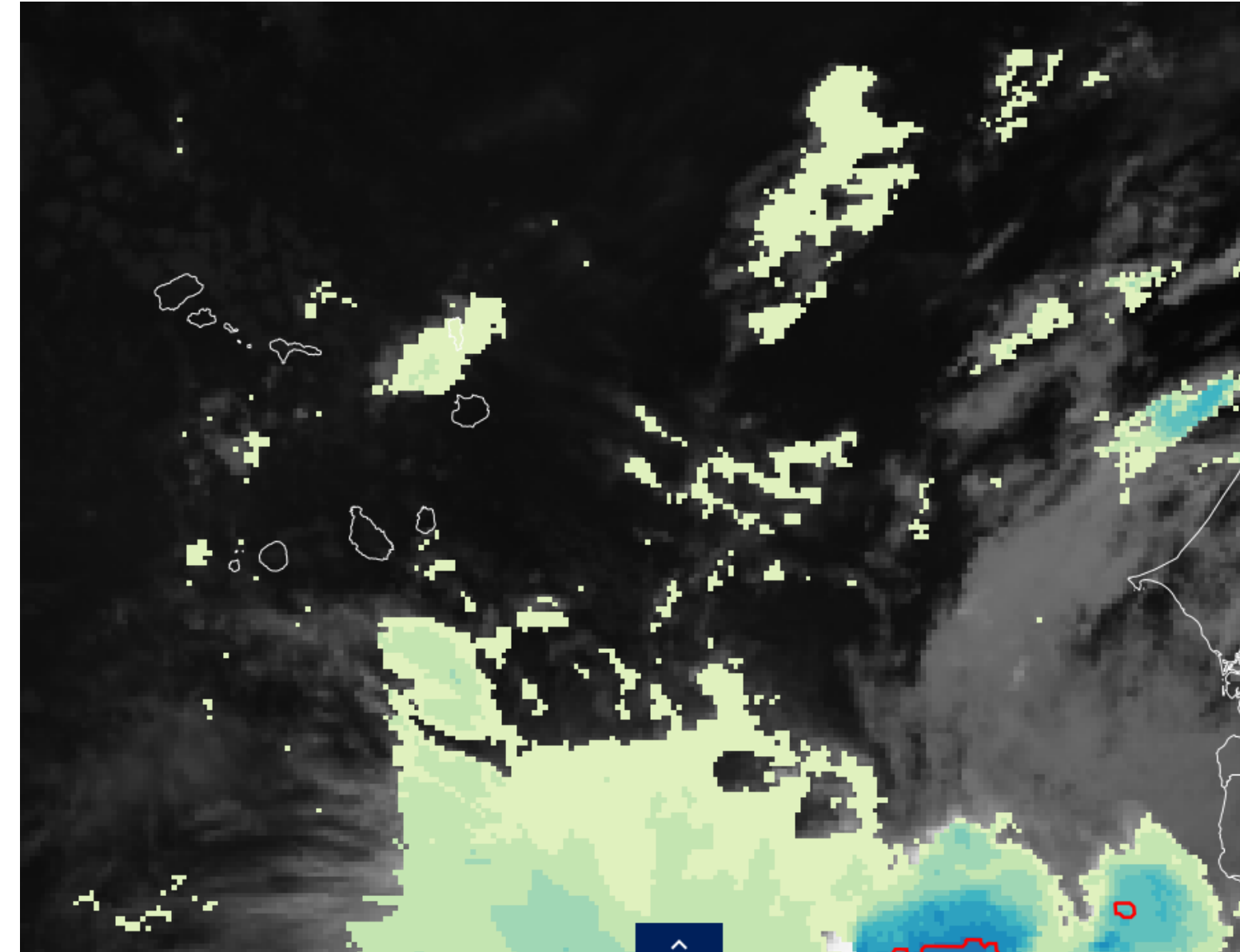
20240829-0432



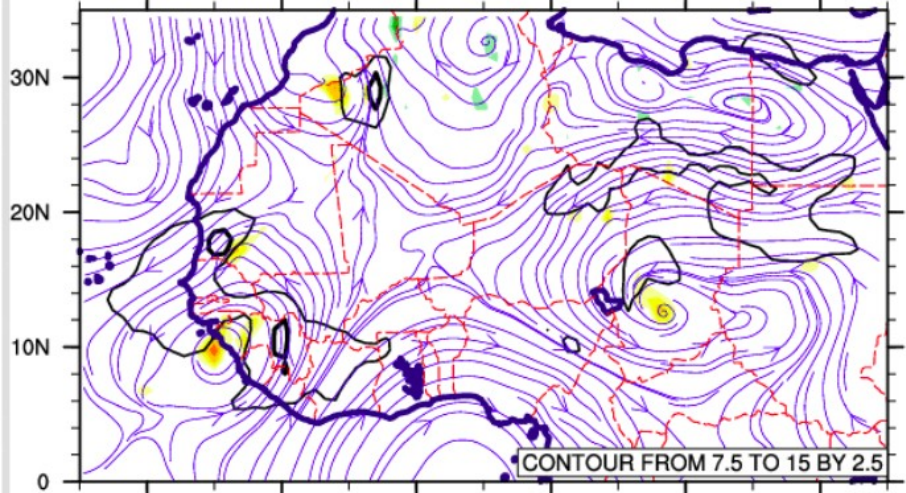
20240829-0432



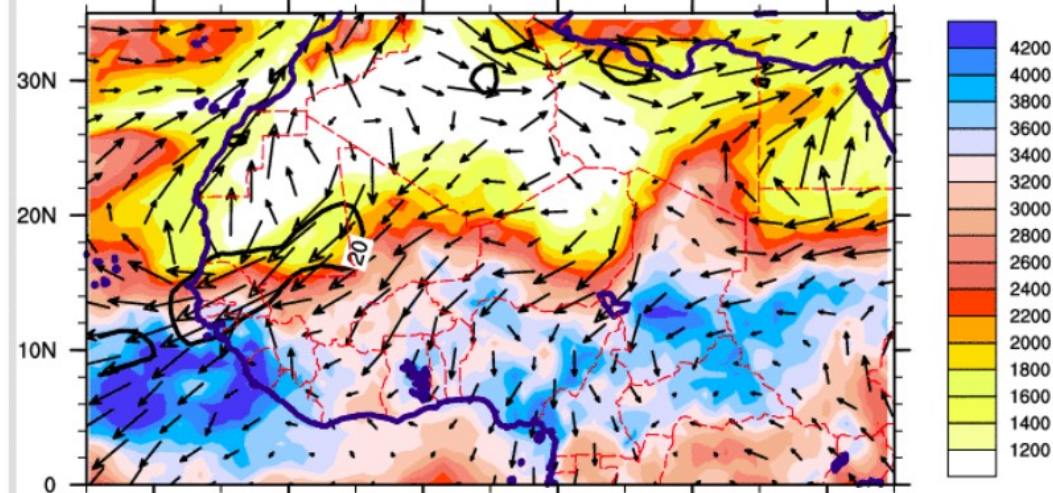
Eumetview
29 0830Z



CEP 0.75 Init 2024082900 Forecast (0H) 2024082900

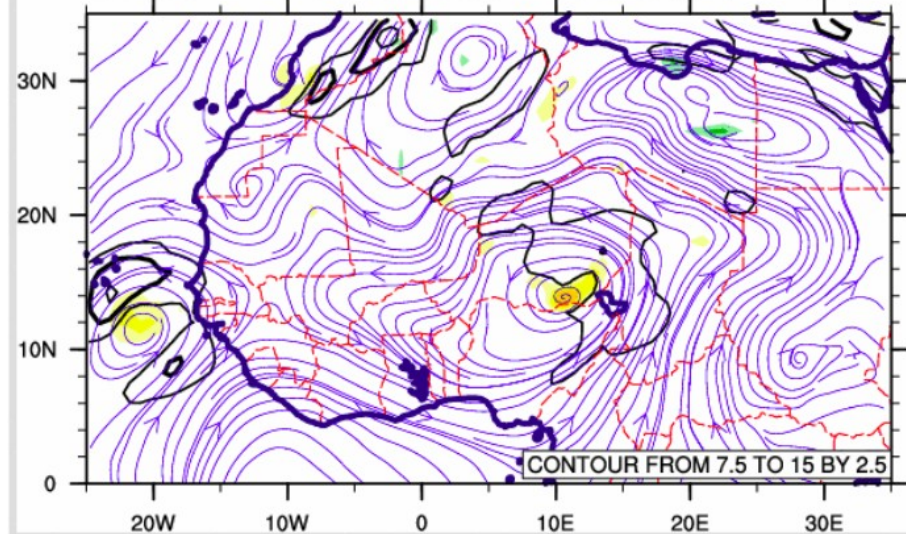


CEP 0.75 Init 2024082900 Forecast (0H) 2024082900



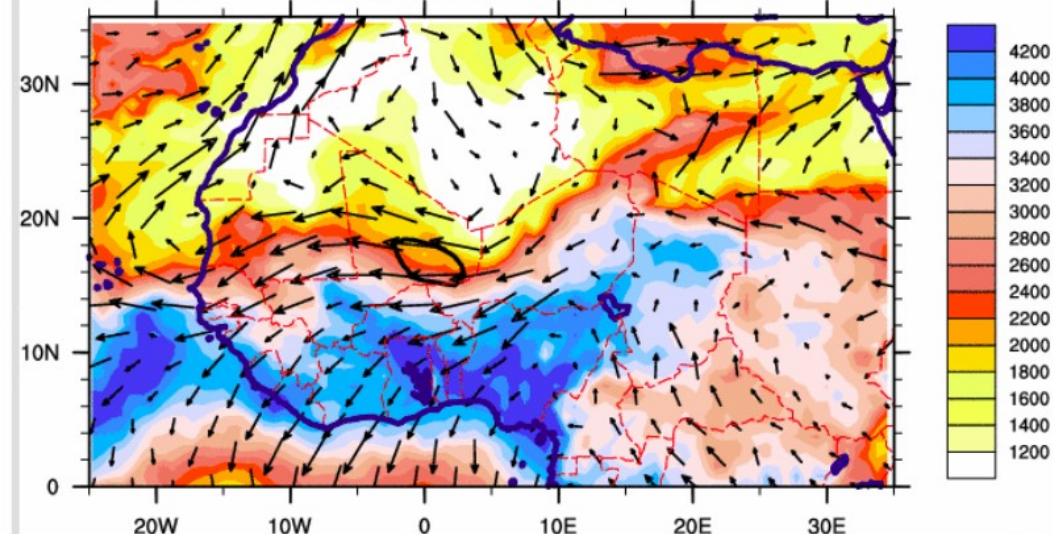
Streamline, ff (black lines m/s), vo (colors in $1e-5$ s $^{-1}$). 950-600 layer

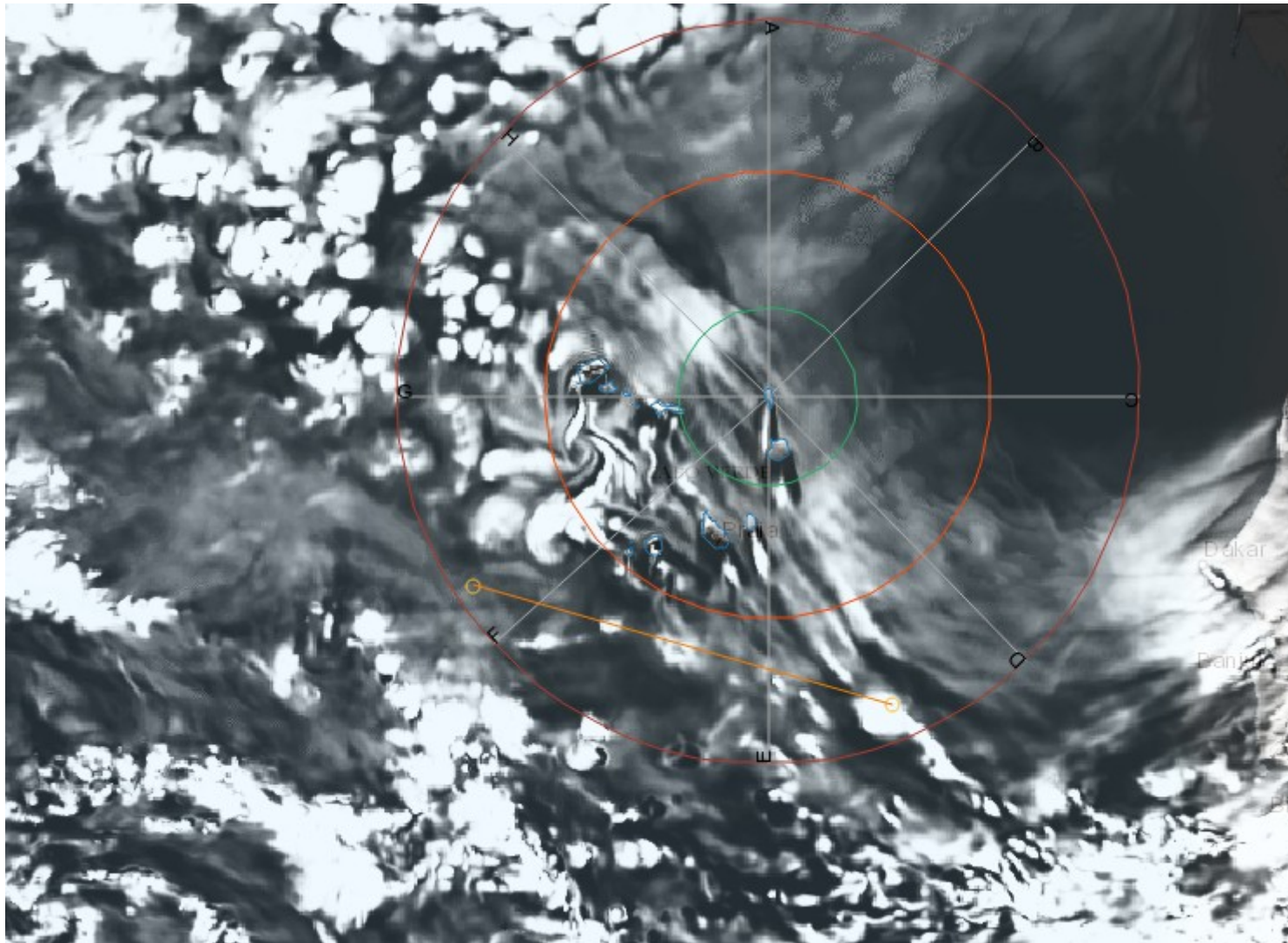
CEP 0.75 Init 2024082900 Forecast (36H) 2024083012



950-600 Vertical shear (m/s). Monsoon Equivalent Water Depth (m)

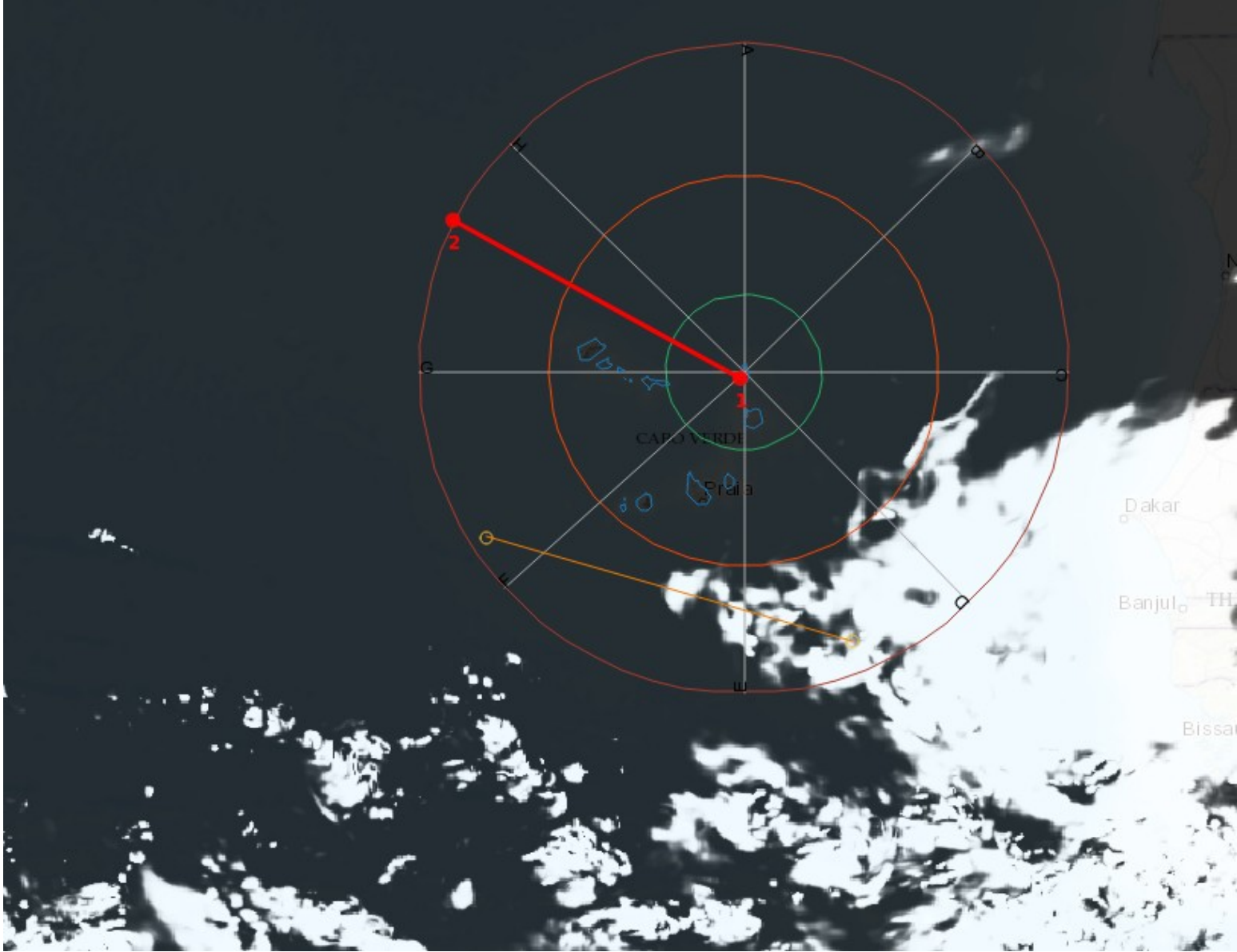
CEP 0.75 Init 2024082900 Forecast (36H) 2024083012



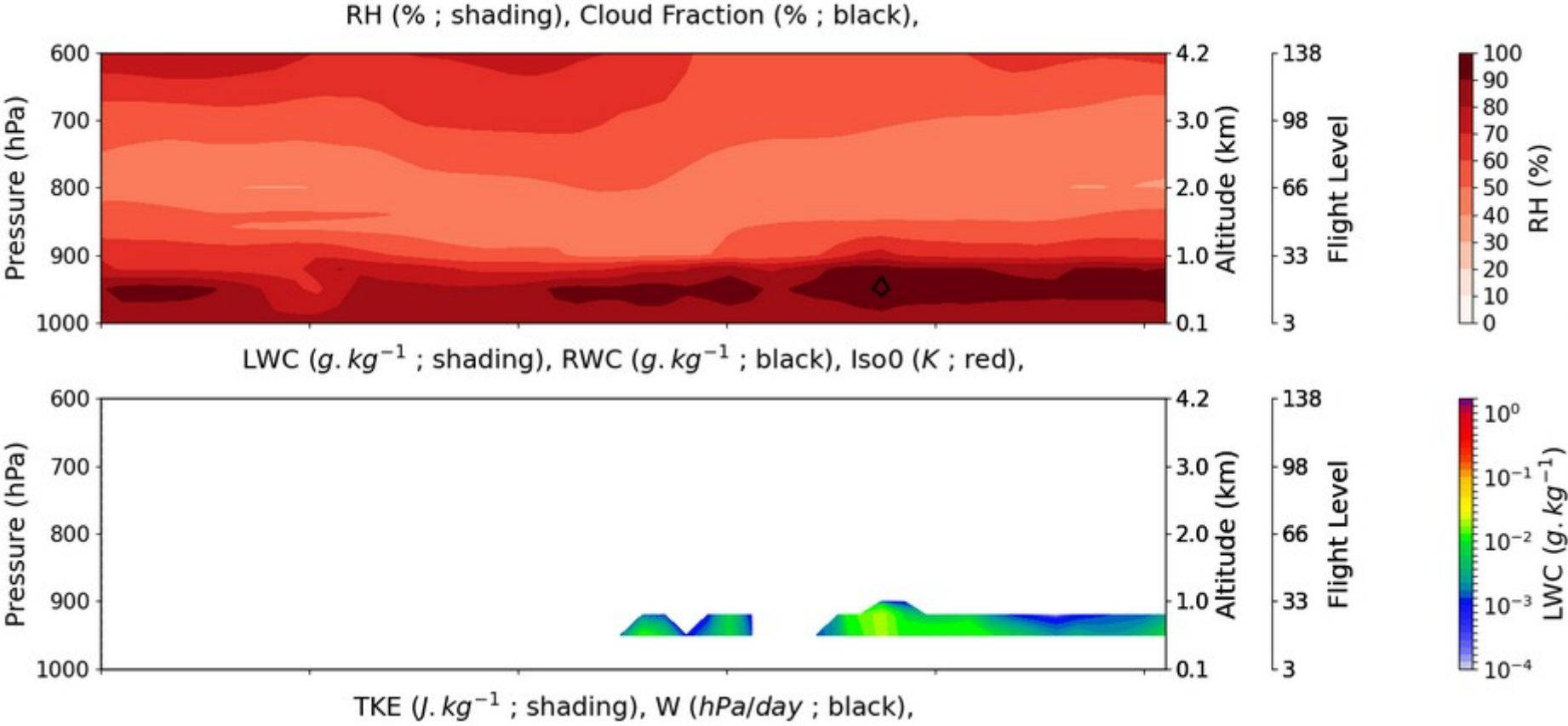


Low Cloud
Cover at 29/08
12Z

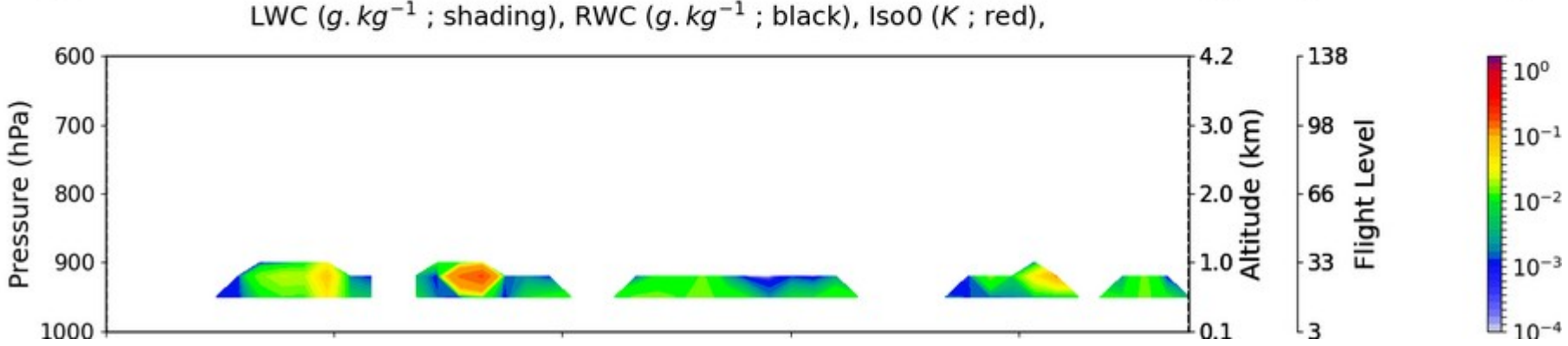
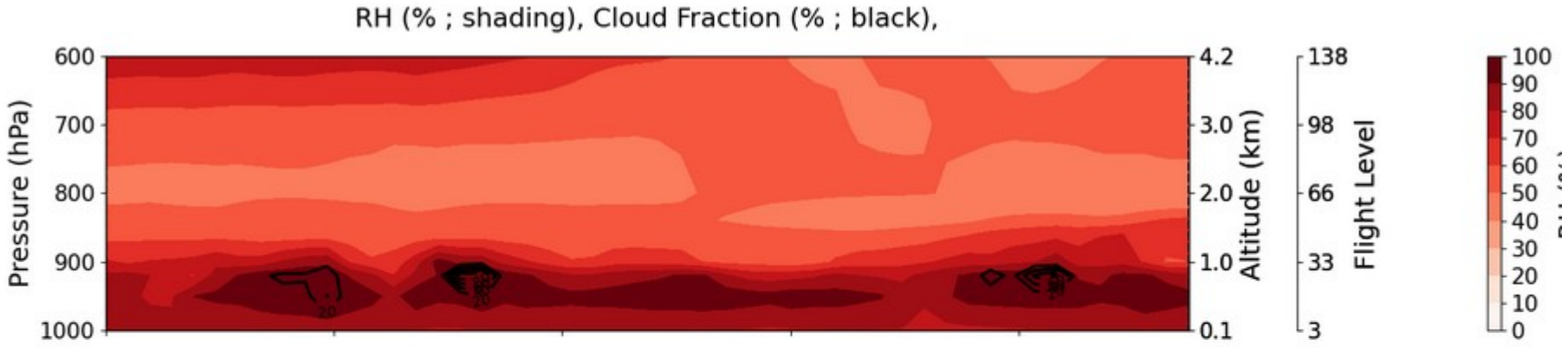
Medium Cloud
Cover at 29/08
12Z



Medium Cloud Cover at 29/08



Cloud
Cover south
at 20/00



Summary

29th August : shallow convection (although a bit deep right now)

30st August : arrival of the AEJ ?

31st August : maybe still ?

1st September : not favorable any more