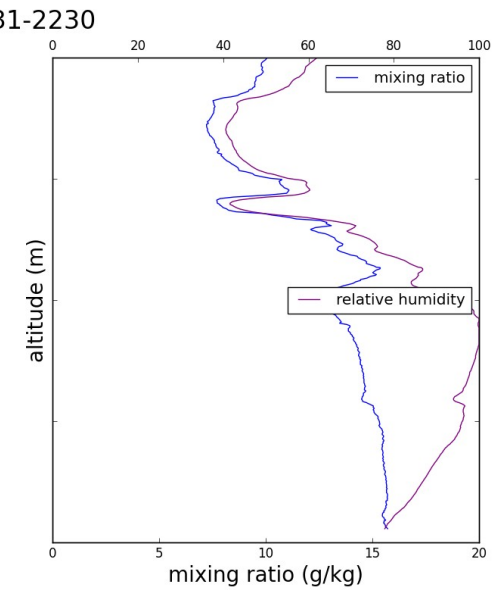
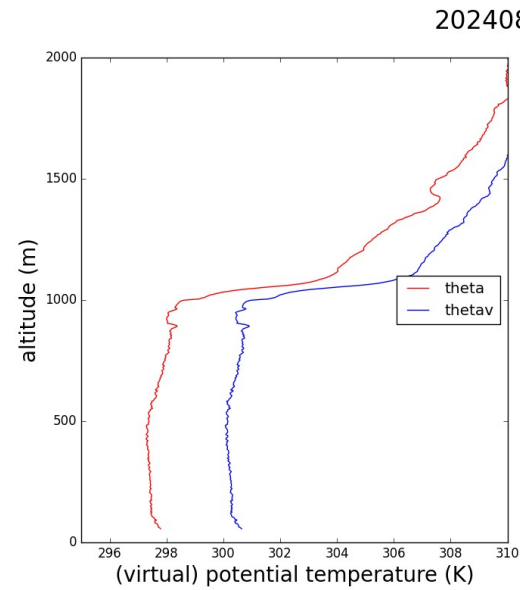
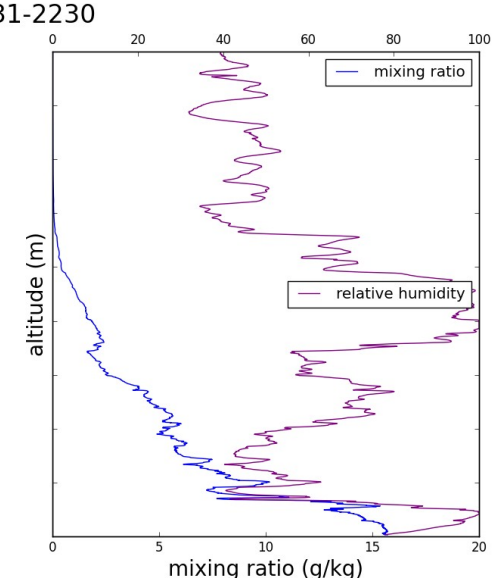
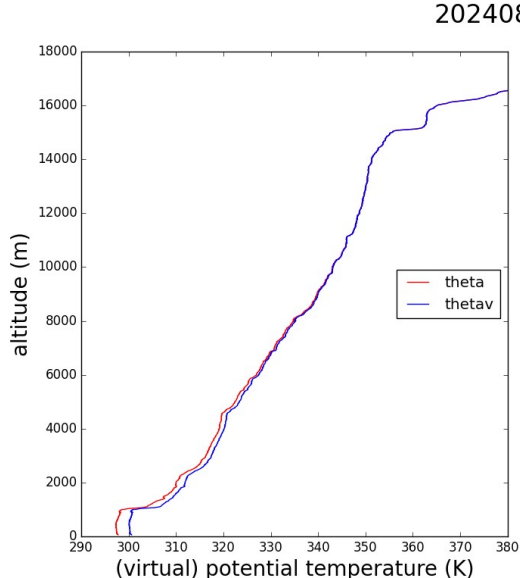
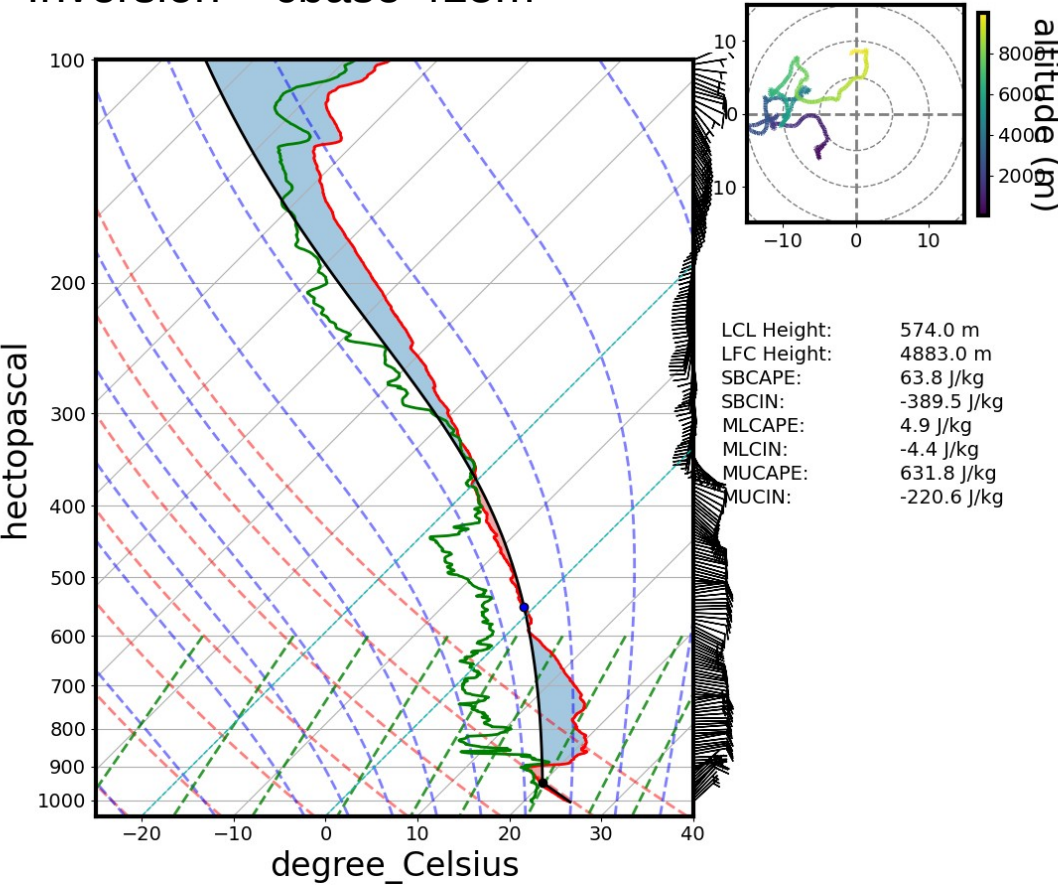


Summary 31/08/2024

- soundings
- AROME – vertical cross sections
- further Ahead with MISVA products

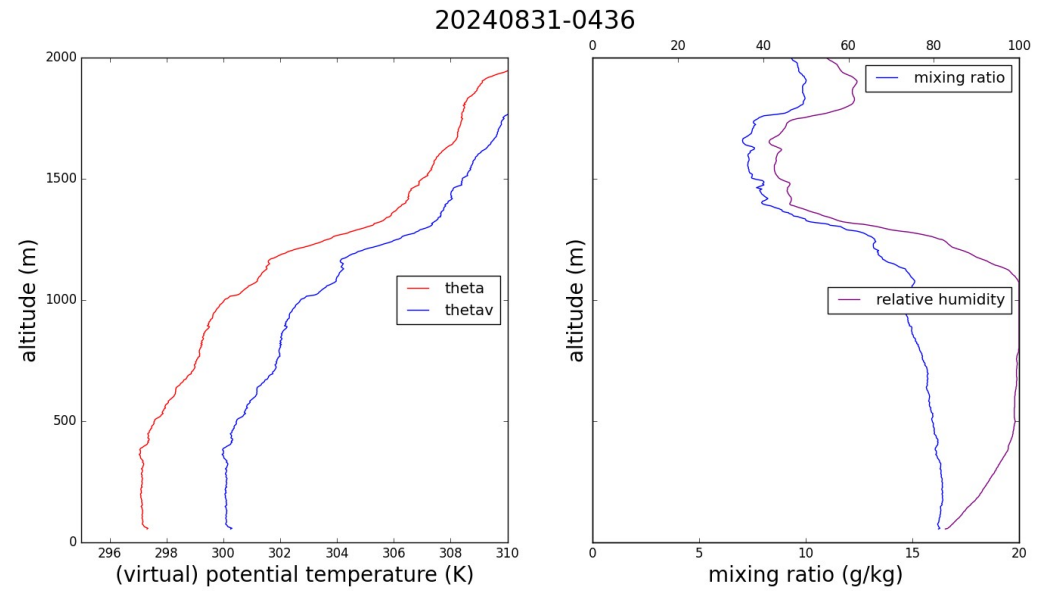
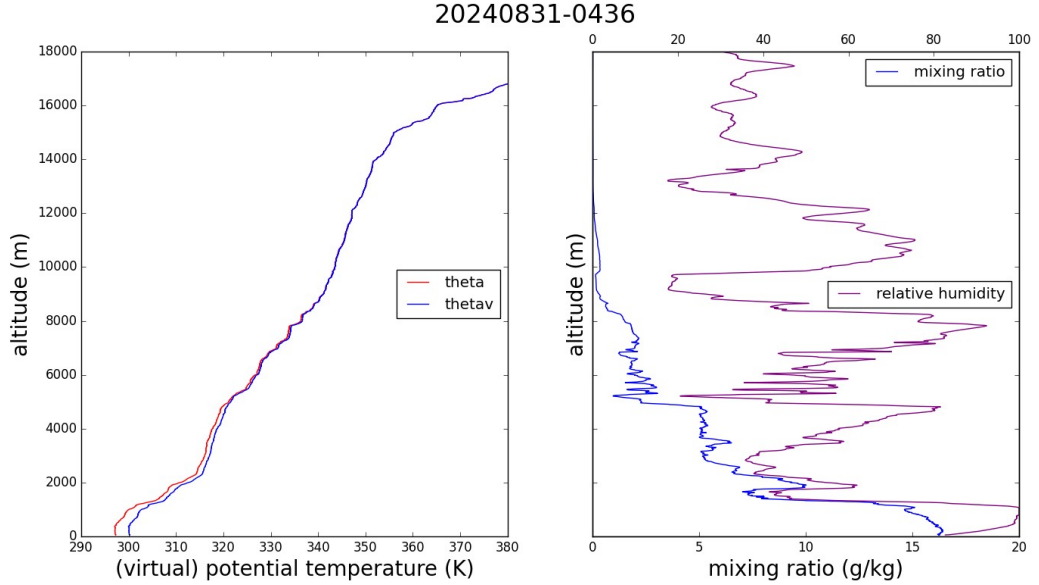
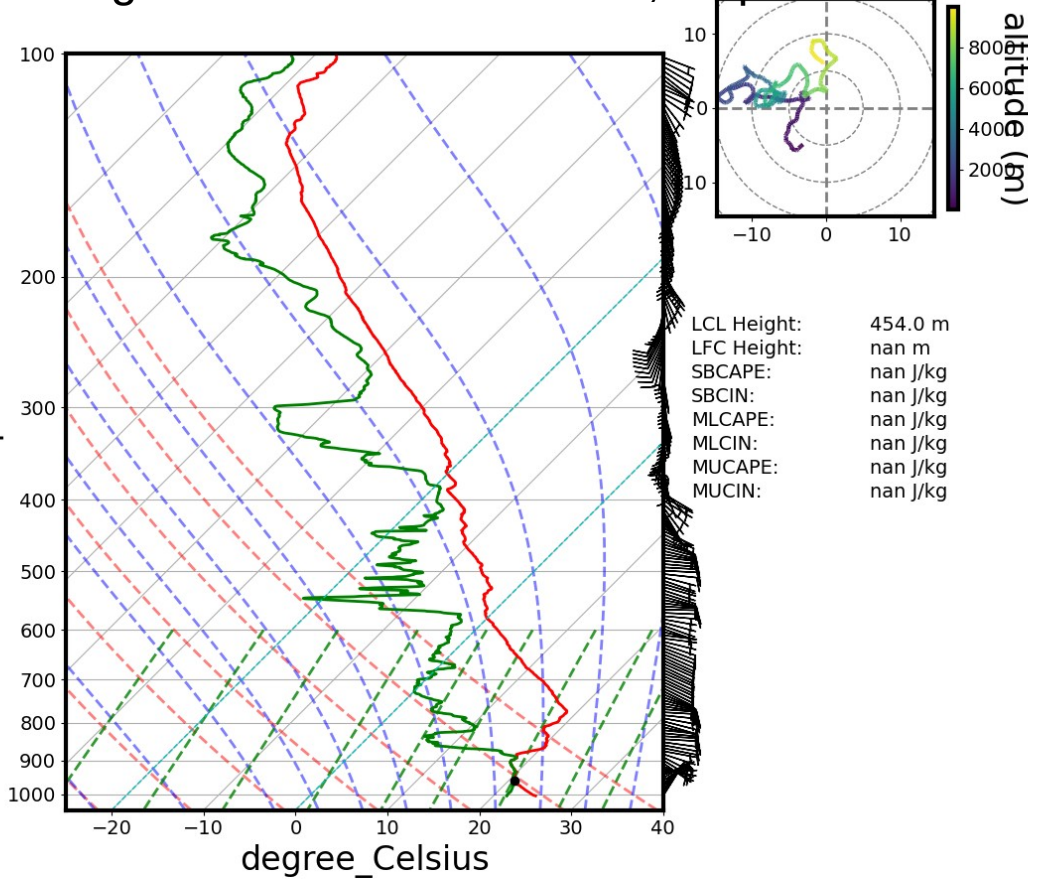
Sounding

31/08/2024 00Z
 Inversion – cbase 415m

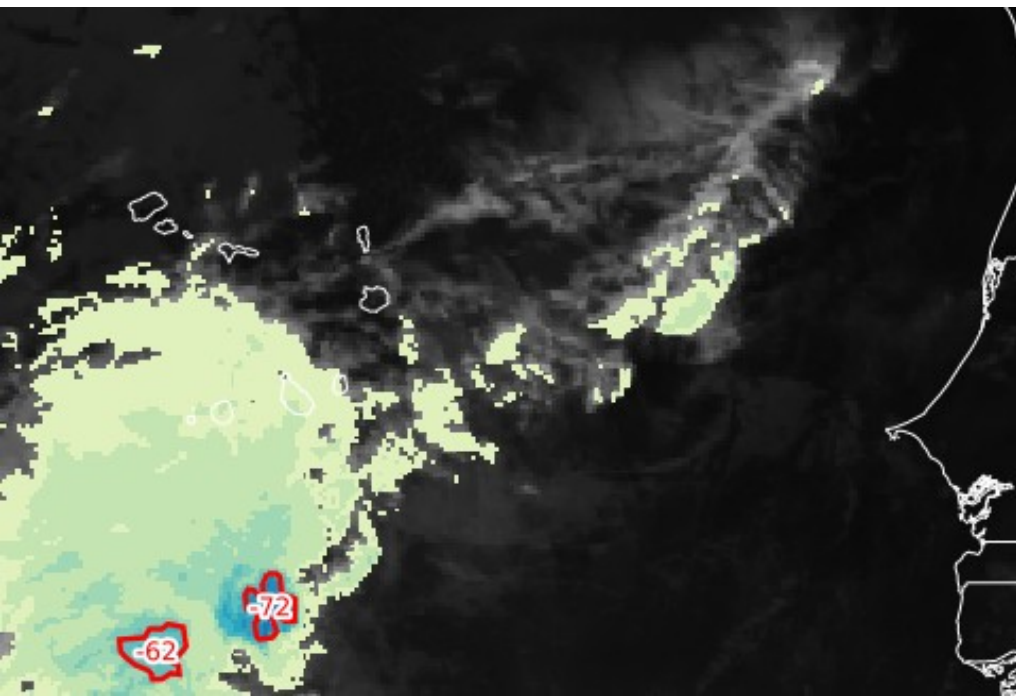


Sounding
31/08/2024 06Z

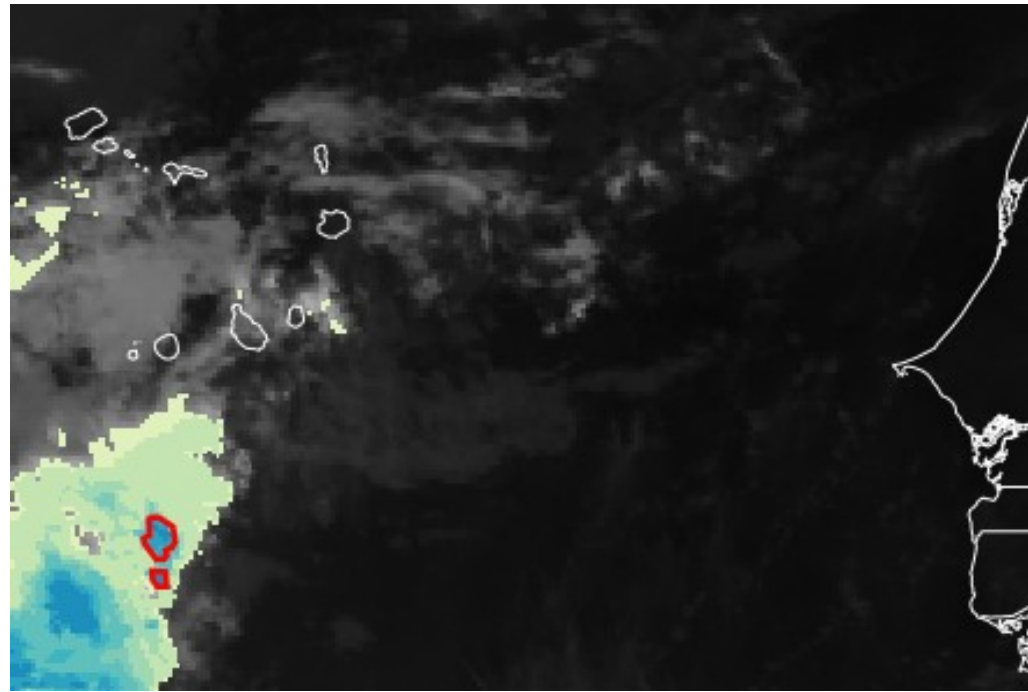
Strong inversion -cbase~400m, ctop 1100m

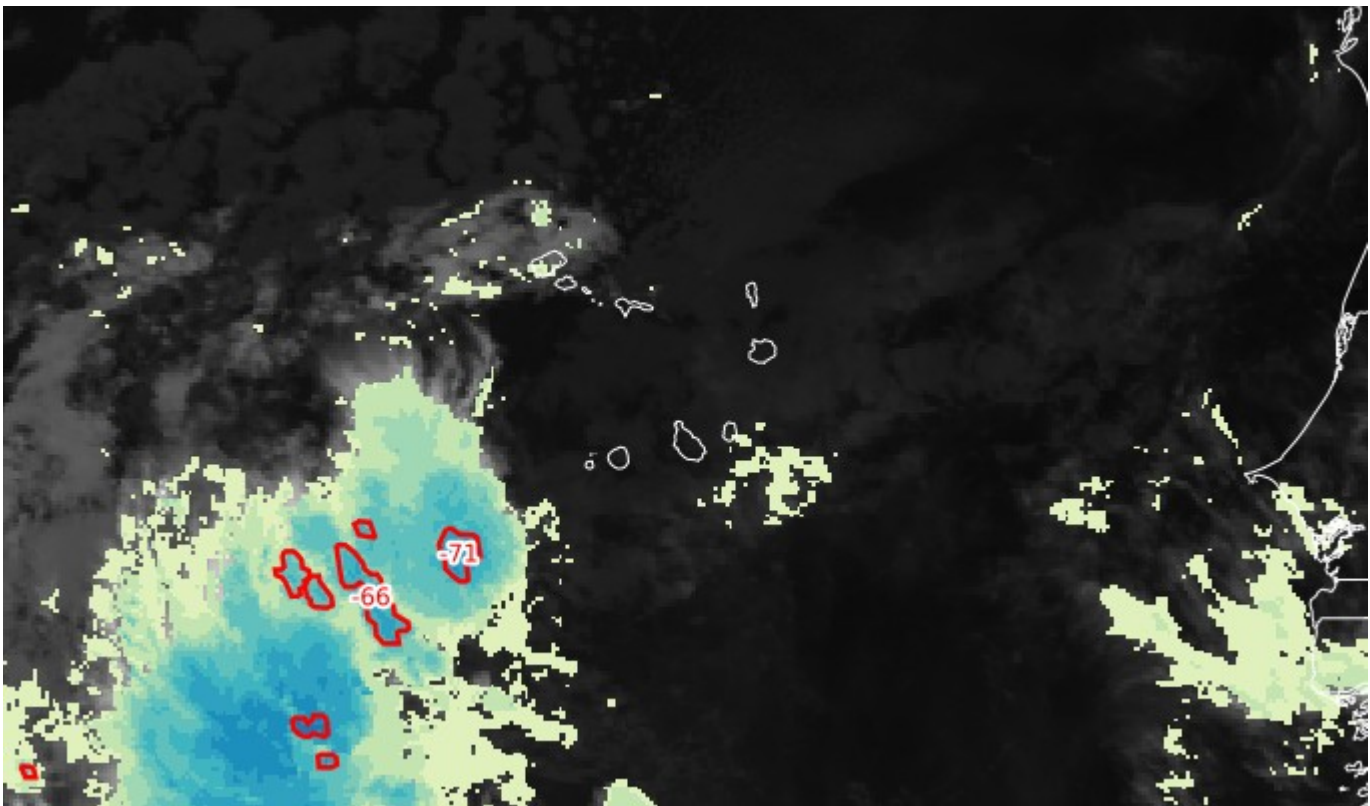


Yesterday flight : 30/08 19Z



30/08 22Z

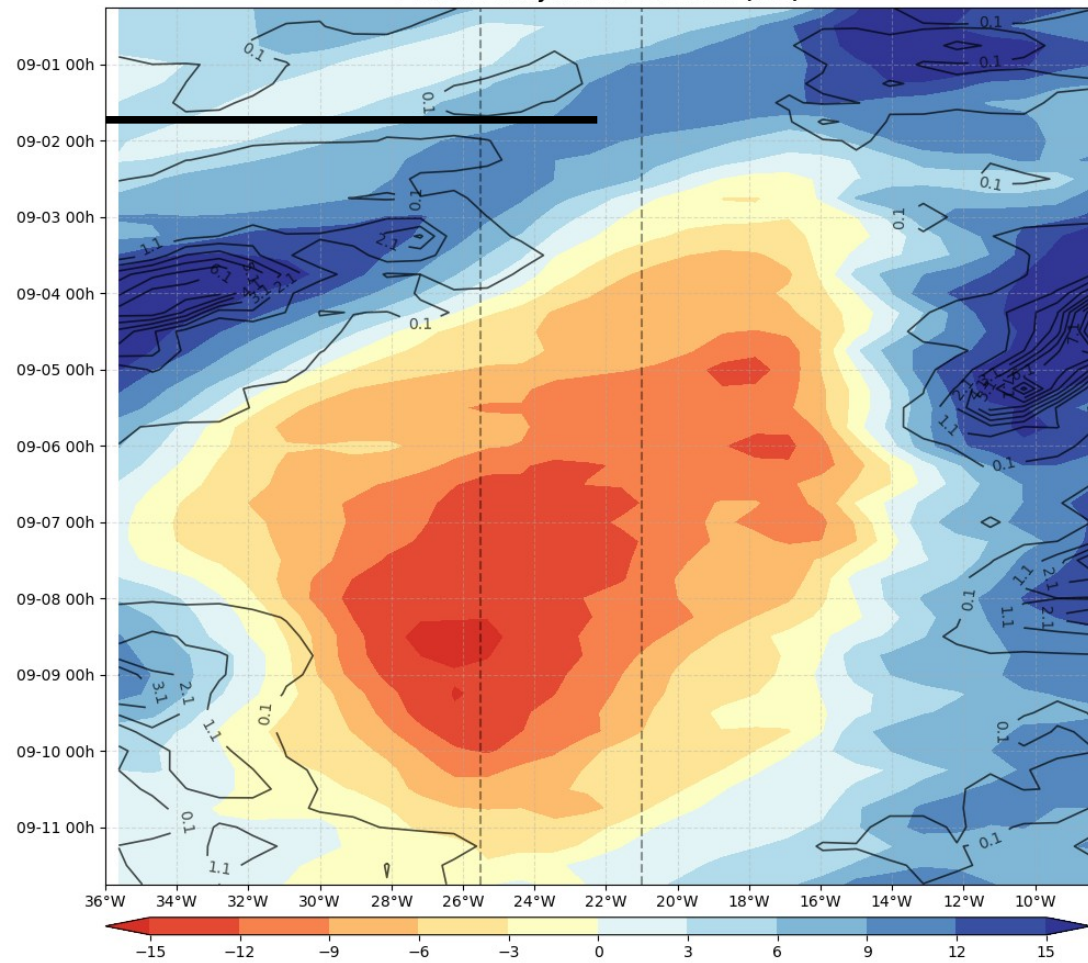




Hovmuller CFS 14-17N

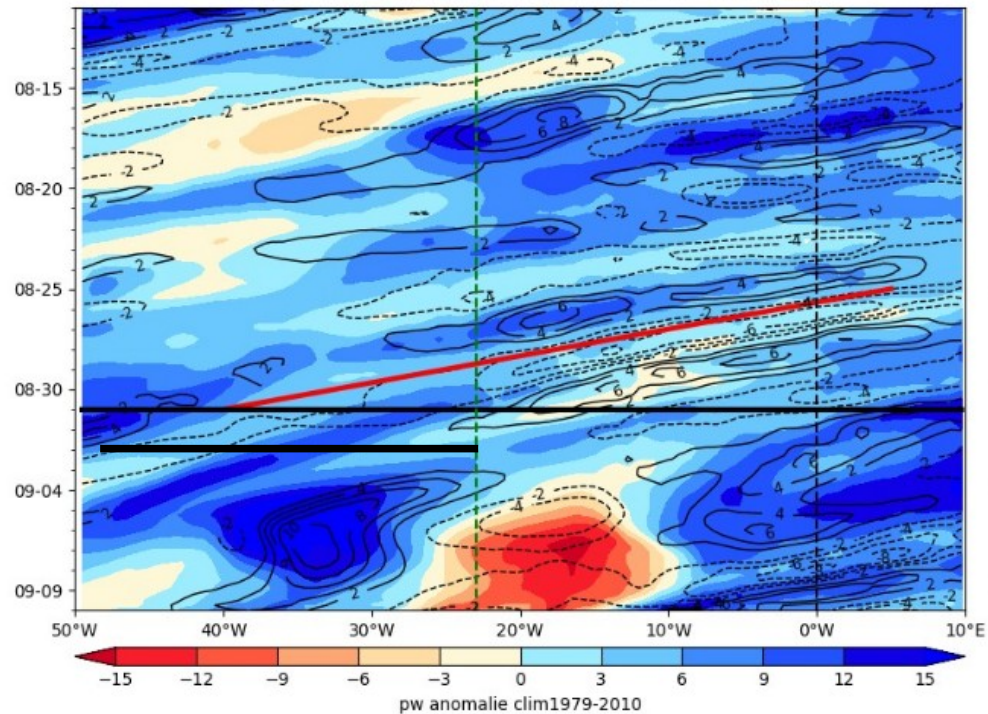
Courtesy Coly

PWAT anomaly & PRATE 14N-17N (CFS)

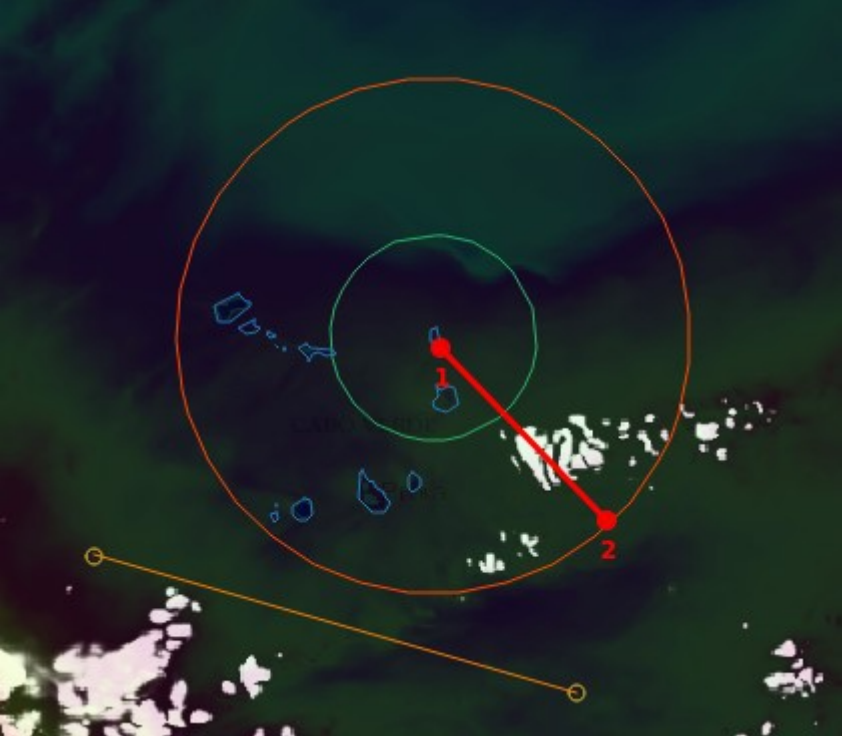


Hovmuller ECMWF 10-18N

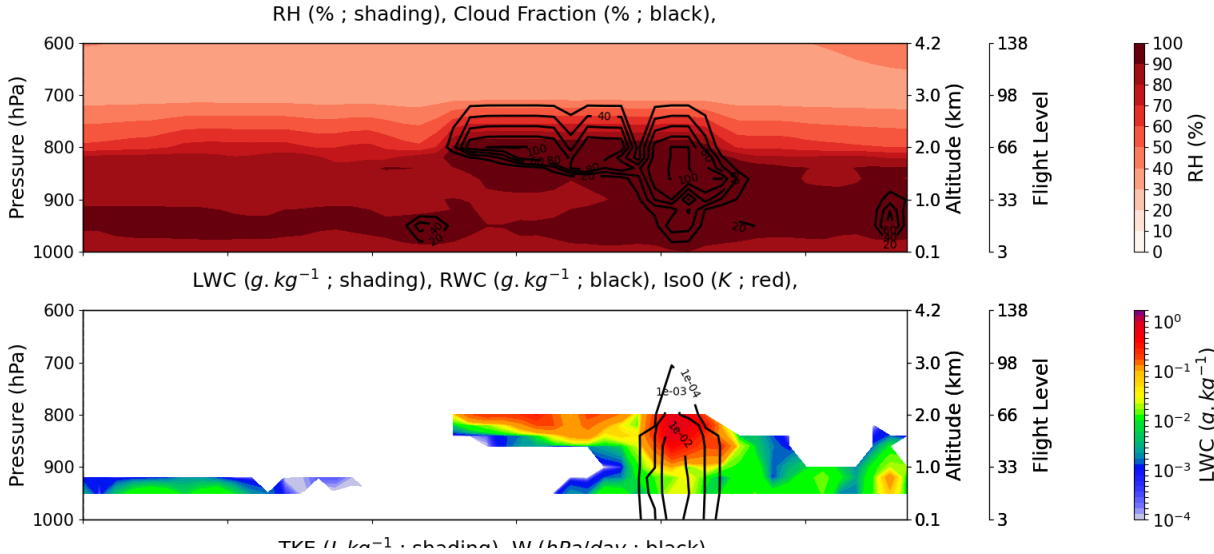
ECMWF PW (color) AND V at 925 hPa 2024-08-31



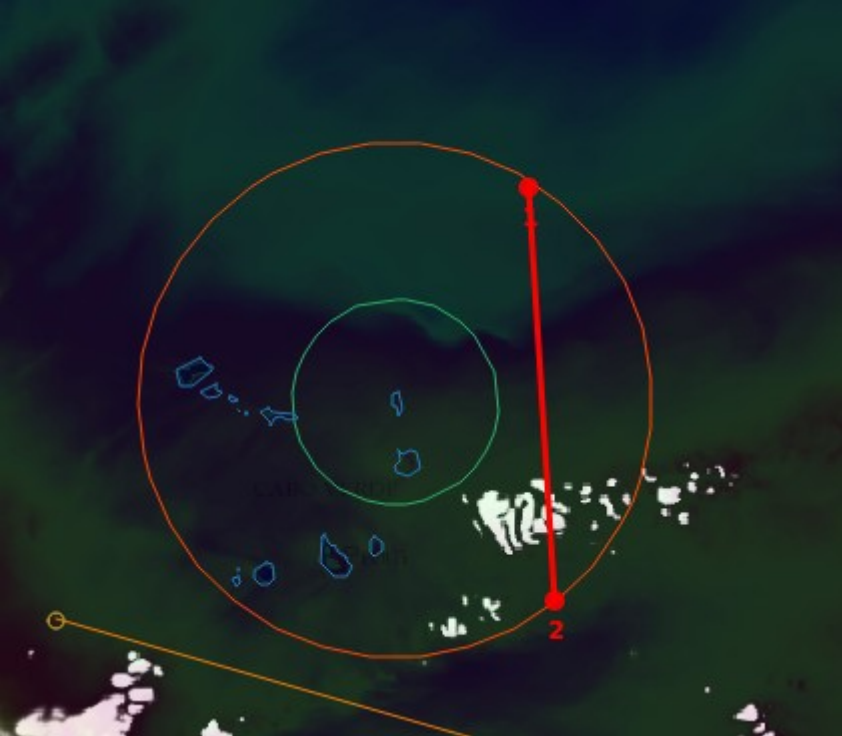
Medium Cloud Cover at 31/08 14Z



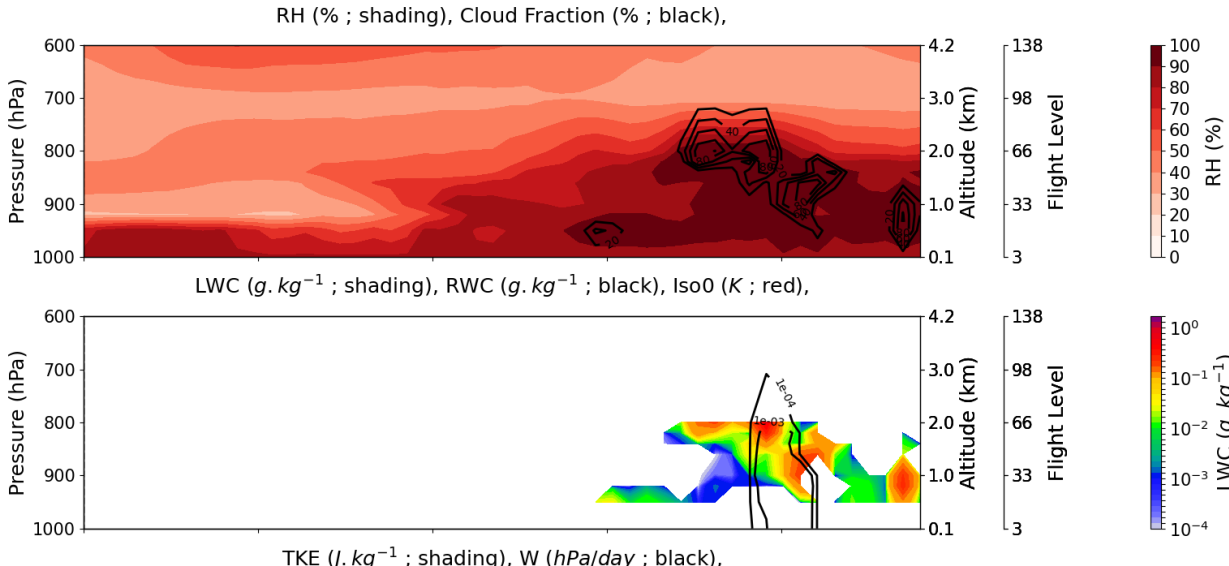
00 UTC T+014 | Valid : 2024-08-31T14:00:00 UTC, coords:

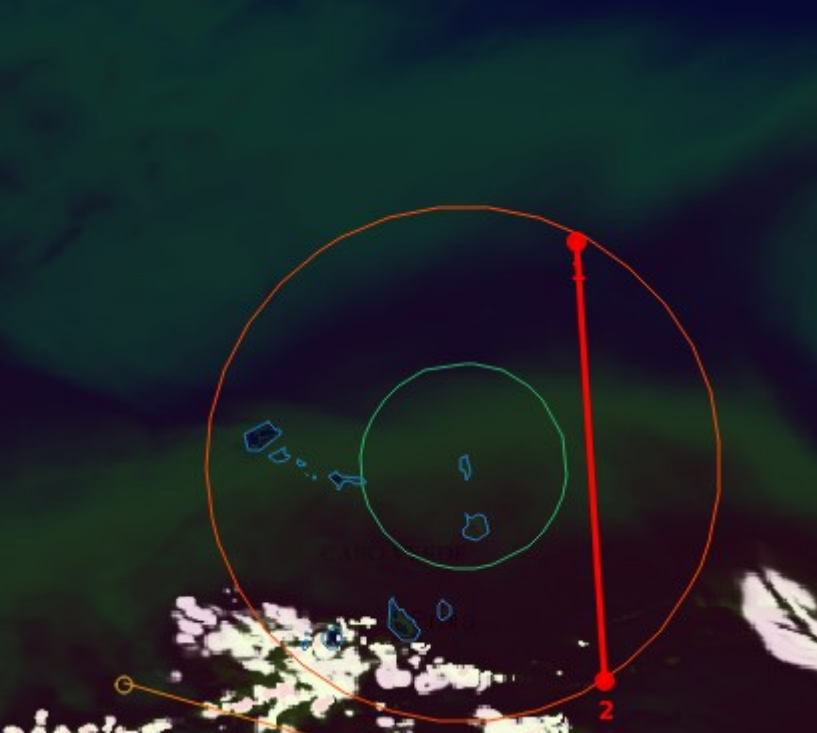


Medium Cloud Cover at 31/08 14Z

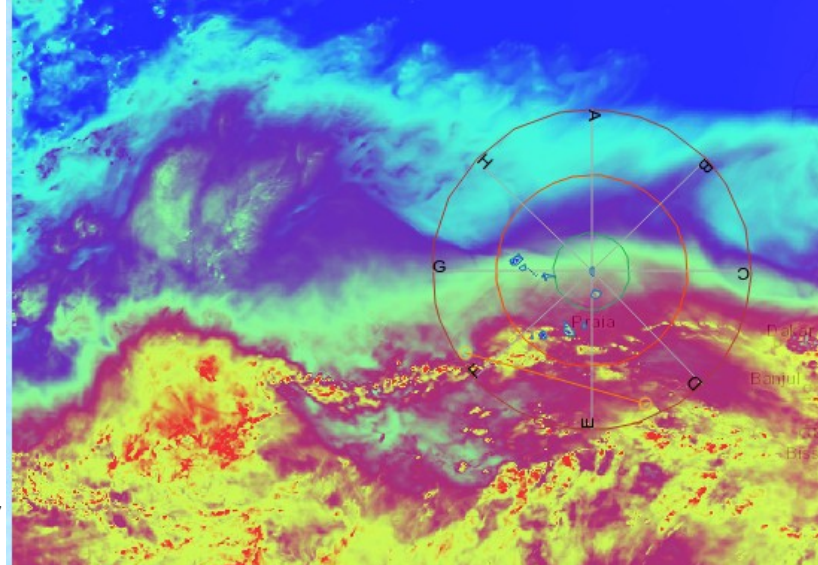


00 UTC T+014 | Valid : 2024-08-31T14:00:00 UTC,
 coords:

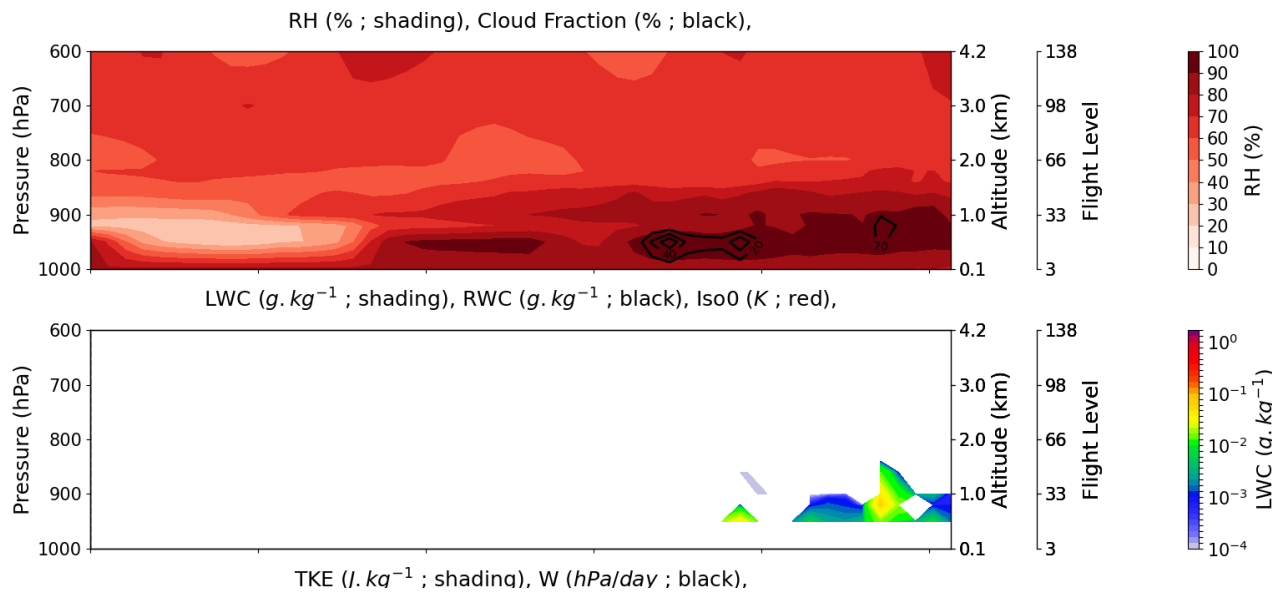


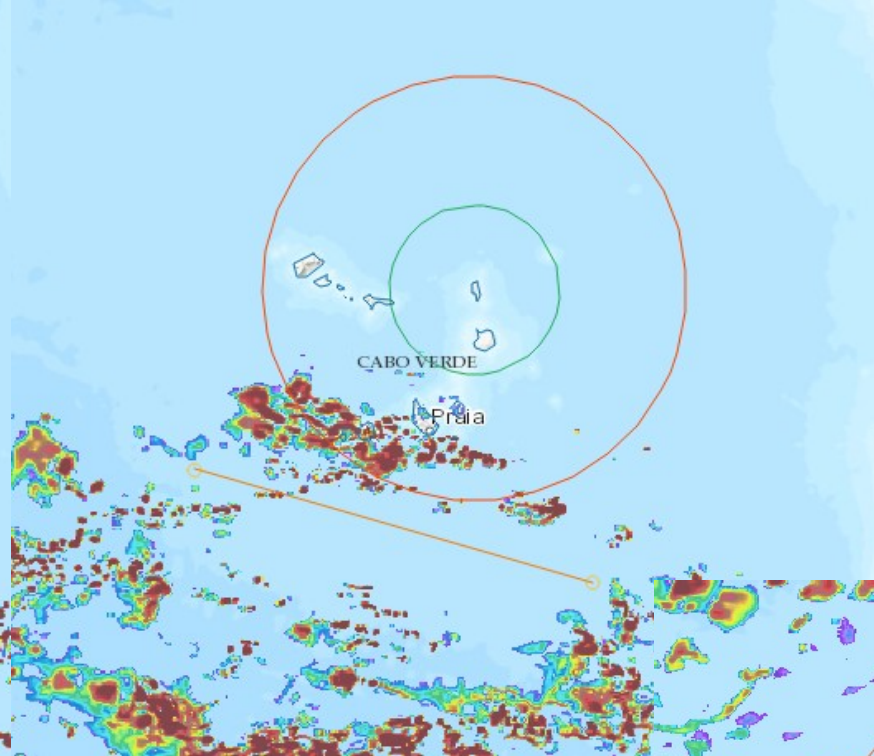
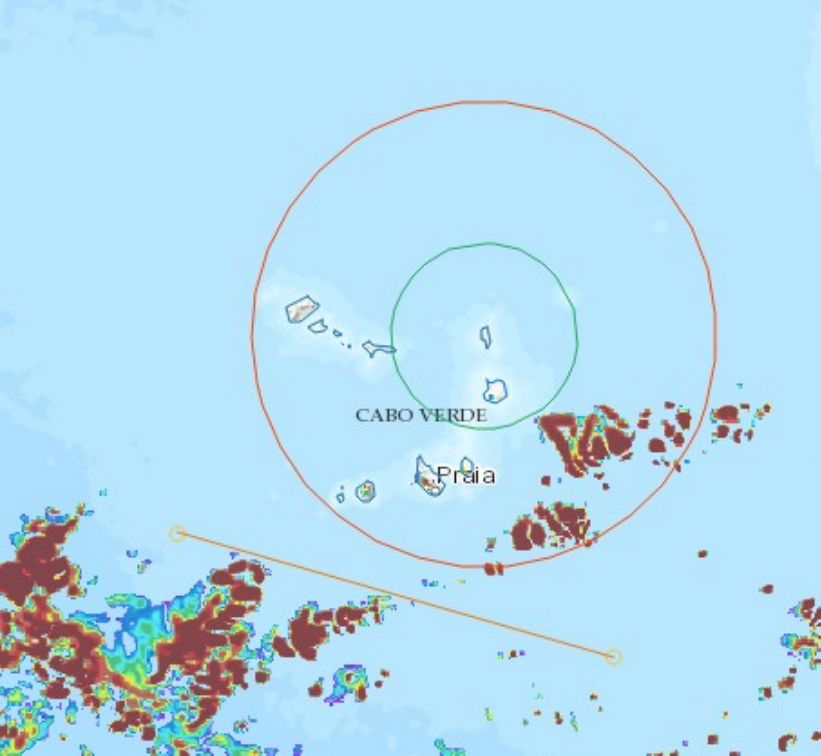


00 UTC T+042 | Valid : 2024-09-01T18:00:00 UTC,
 coords:



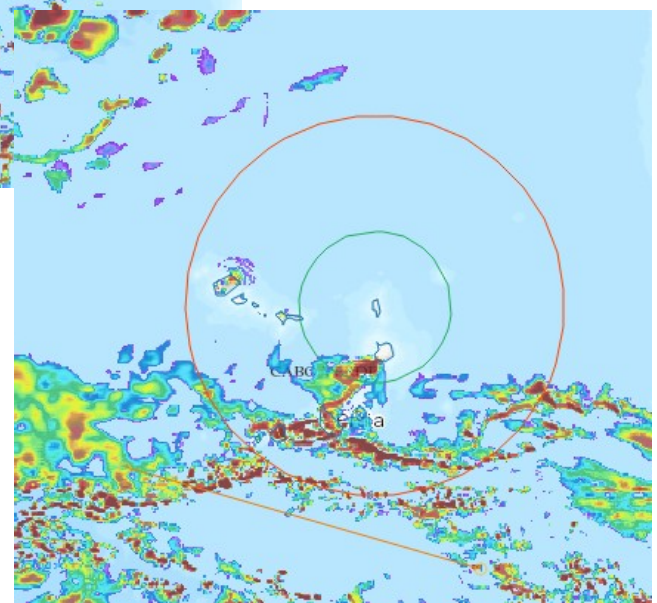
Medium Cloud
 Cover at 01/09
 19Z





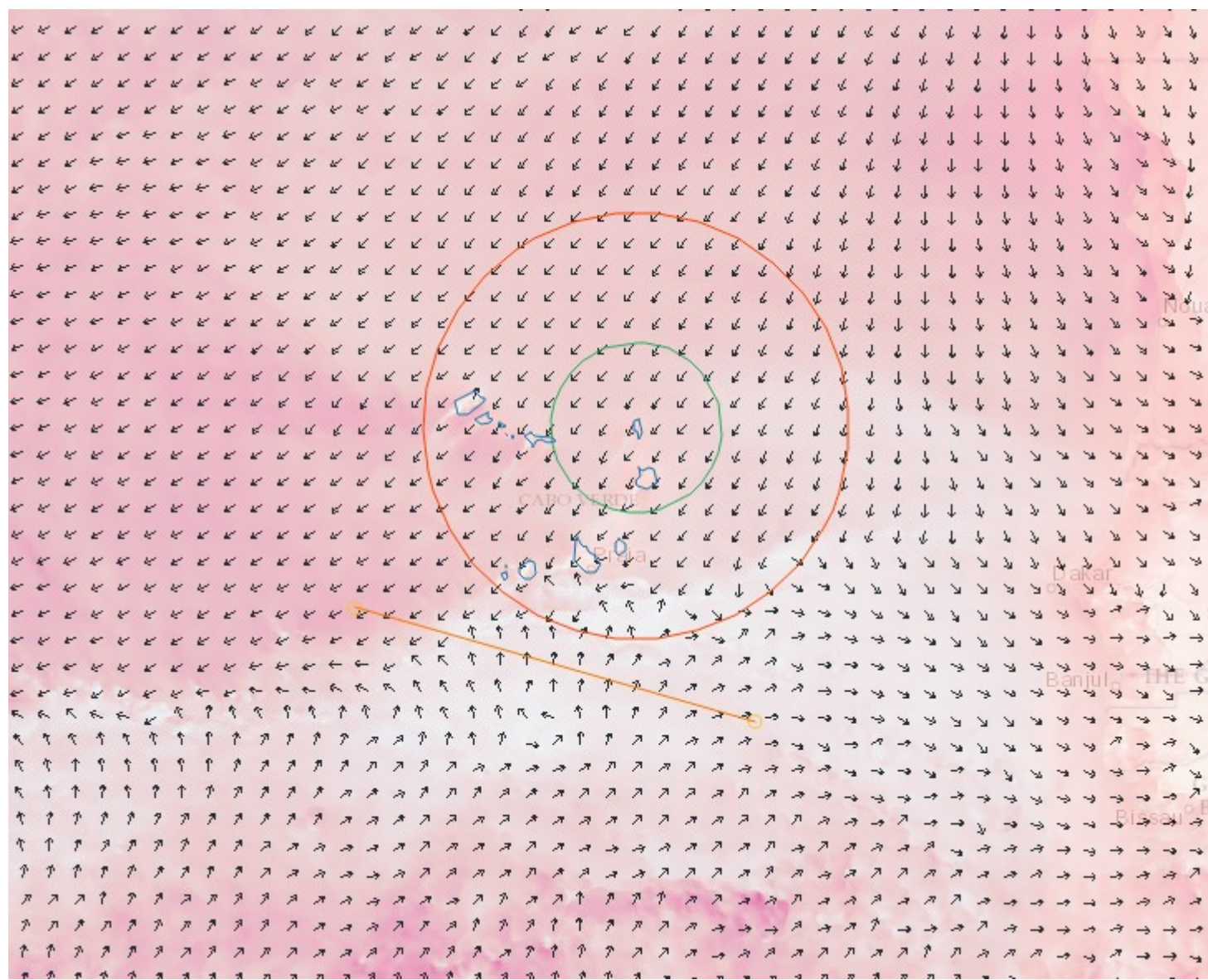
ql_800hPa
01 at 18Z

ql_800hPa
31 at 15Z



ql_900hPa
01 at 18Z

Ws_0109
20Z



Summary

31st August : still some shallow (less deep)

1st September : very shallow clouds, weak wind

2nd September : new moister event ; encore shallow

3-8 September : dry period