

DRAFT SUMMARY MAESTRO

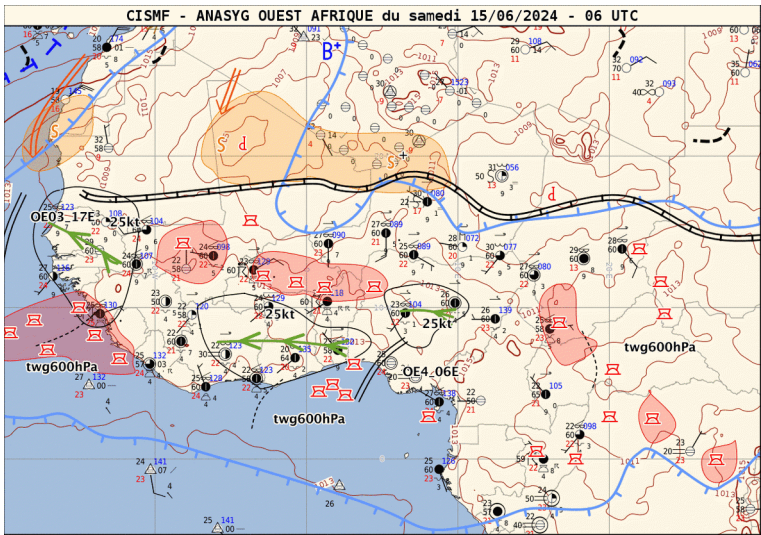
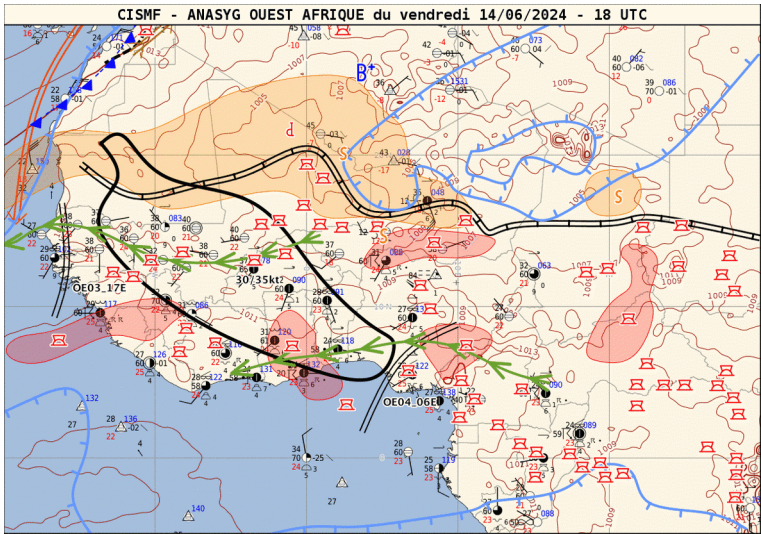
Quatre parties :

- evaluation J-1
- prevision courte échéance J-J+36h
- prevision semaine en cours J-J+7
- prevision long terme (qq semaines) : mis à jour
1 fois /semaine

Situation Day-1

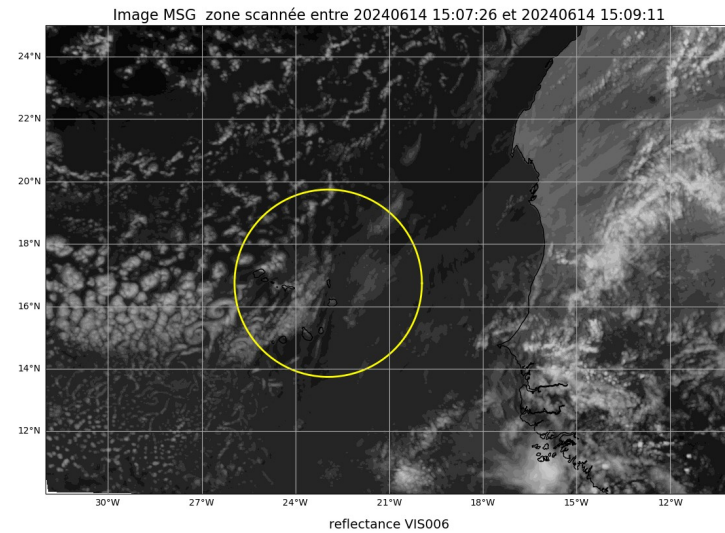
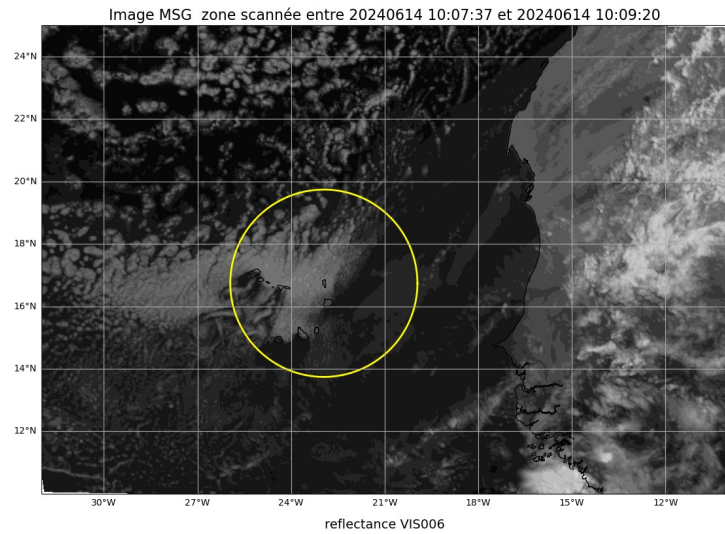
- ANASYG + image sat (retour sur prévi la veille pour apprendre)
- Celui de la DIRAG à récupérer (en cours)
- +Carte PW , MT J-1
- +Carte PW decomposition ondes J-1

Anasyg J-1 18h et J 6h



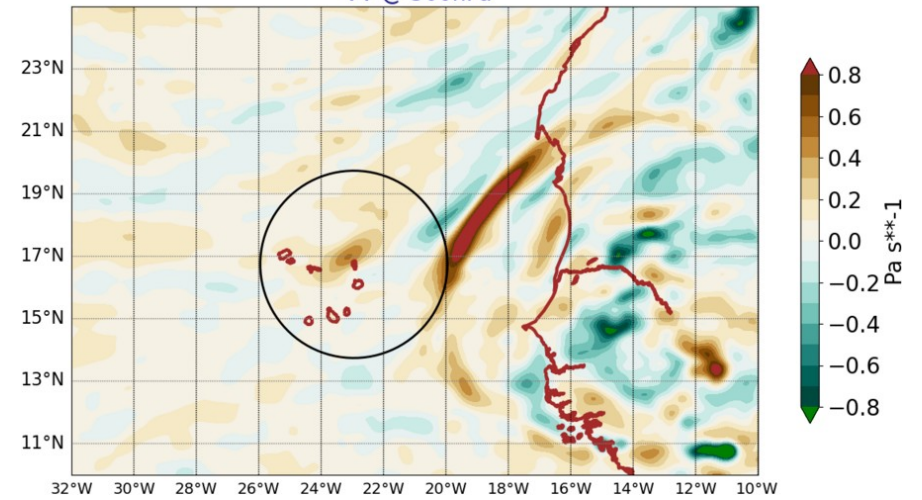
- + anasyg dirag

Image MSG Visible J-1 10h et 15h

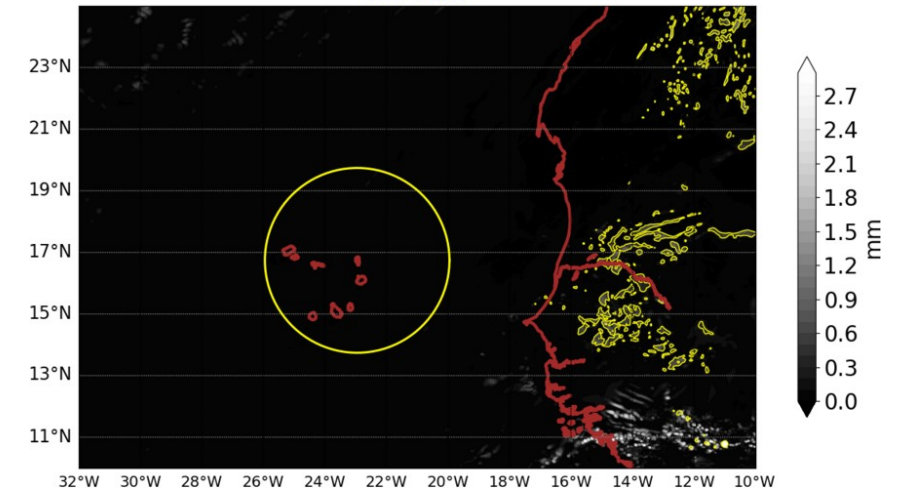


Arome J-1 12h

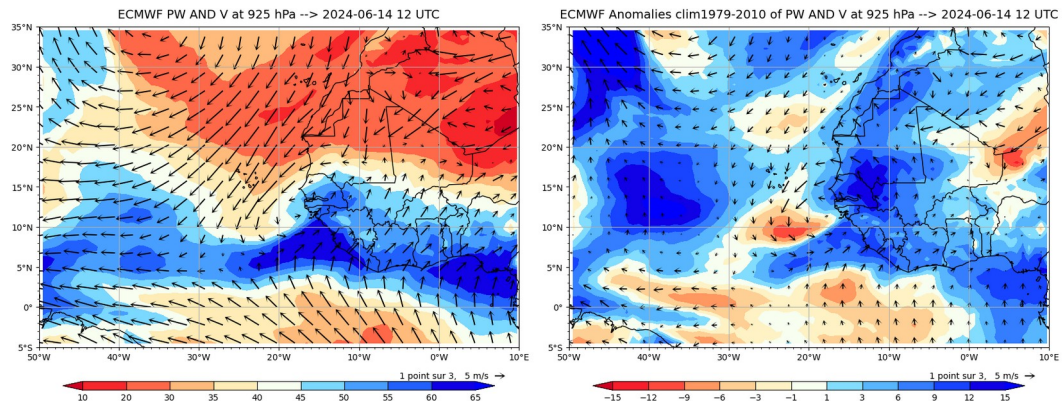
AROME25 20240614-12-UTC -ech(12h)
VV @ 500hPa



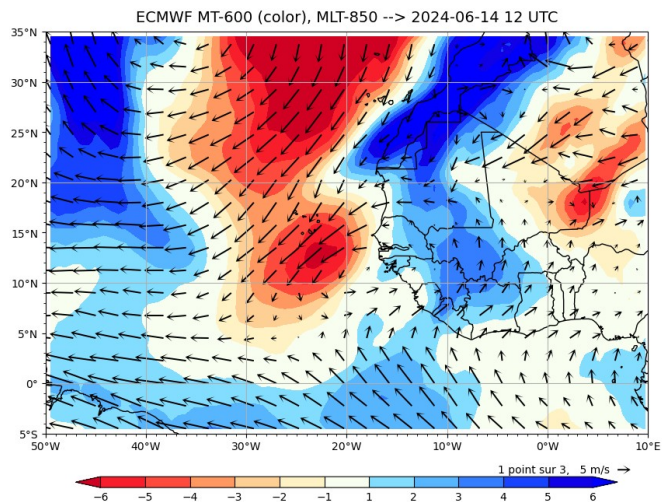
AROME25 20240614-12-UTC -ech(12h)
IWP+LWP



Cartes PW, MT et Ondes J-1



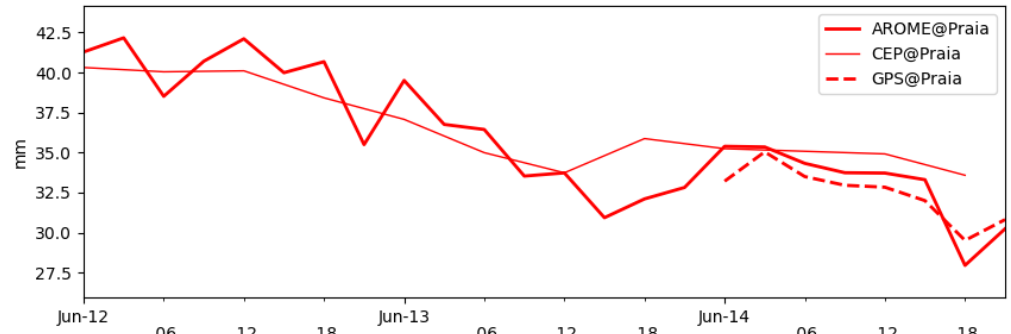
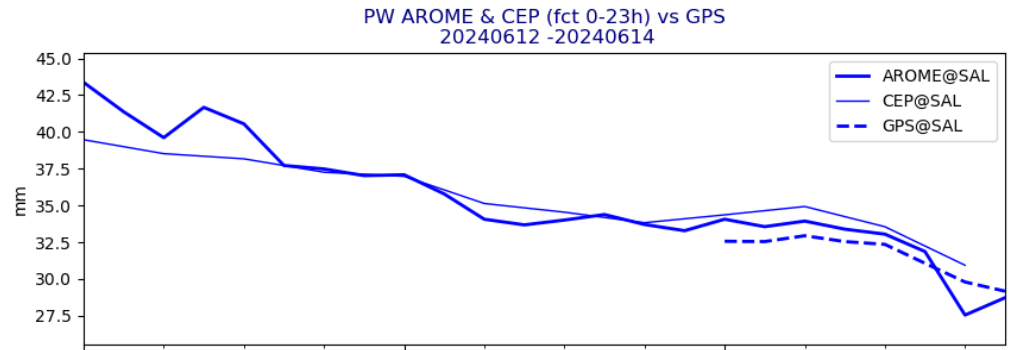
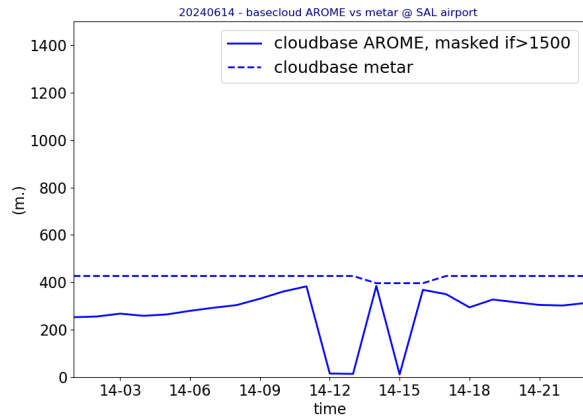
Ajouter ondes J-1



OBSERVATIONS J-1

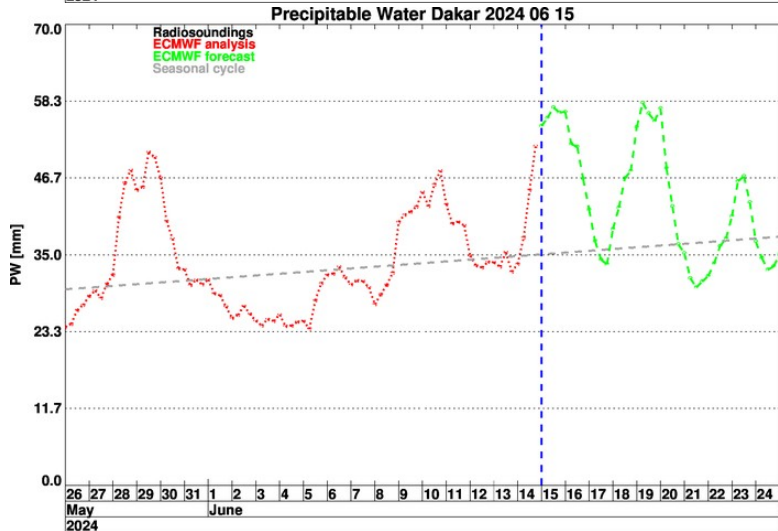
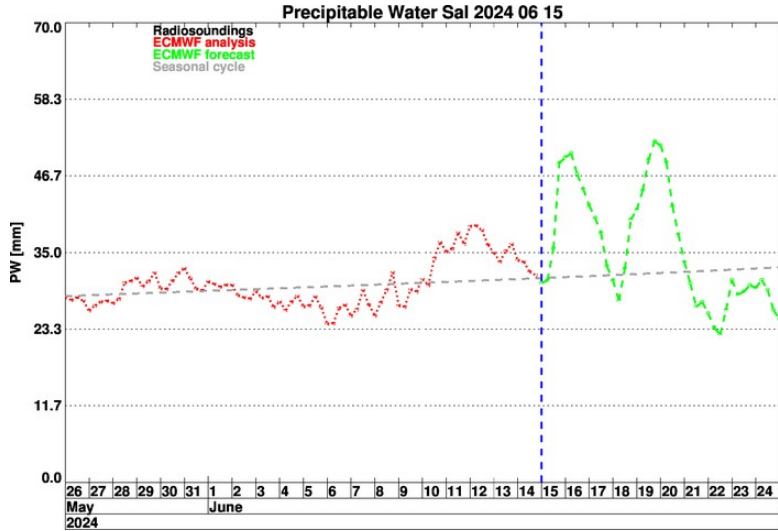
Lidar@ mindelo
metar@sal

GPS @ Sal
GPS @ Mindelo

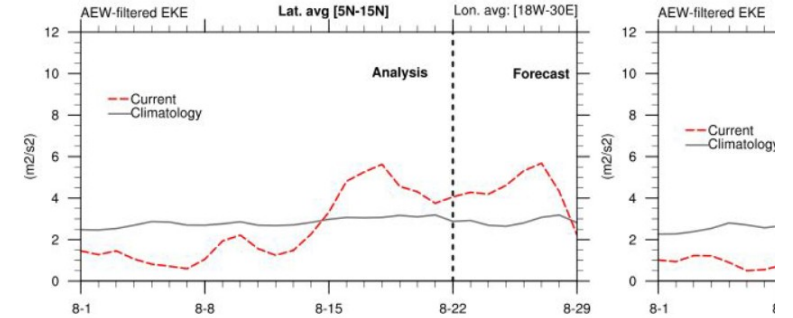


Prévision courte échéance J - J+36h

Serie temporelle PW Sal et Dakar + EKE



AEW wind index



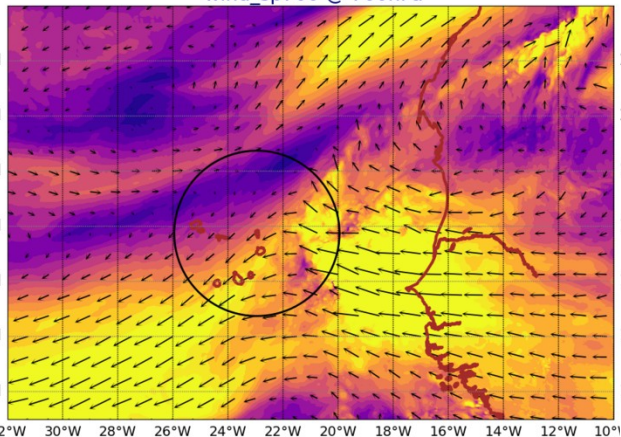
FIGURES AROME

- PW J-J+36h 850 hPa ?
- Pbl height
- Avoir une coupe zonale / meridienne de qv
-

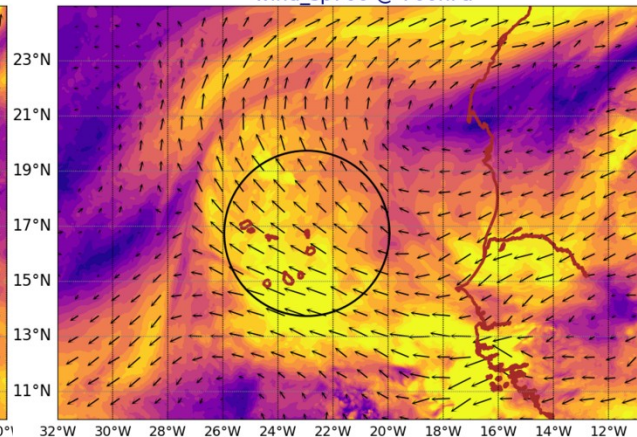
AROME Wind @ 700 hPa

AROME Wind @ 920 hPa

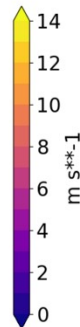
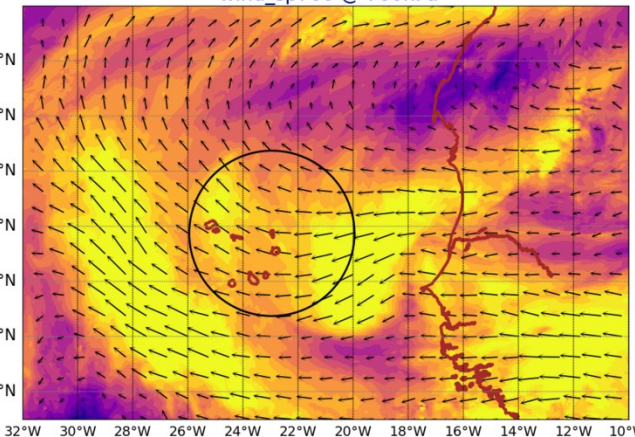
AROME25 20240615-12-UTC -ech(12h)
wind_sp700 @ 700hPa



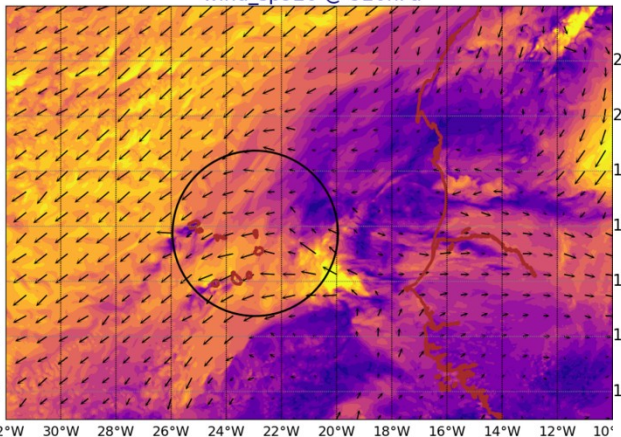
AROME25 20240616-12-UTC -ech(36h)
wind_sp700 @ 700hPa



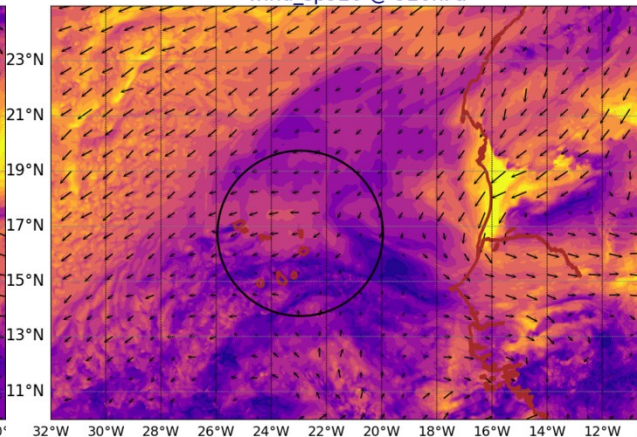
AROME25 20240617-12-UTC -ech(60h)
wind_sp700 @ 700hPa



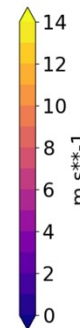
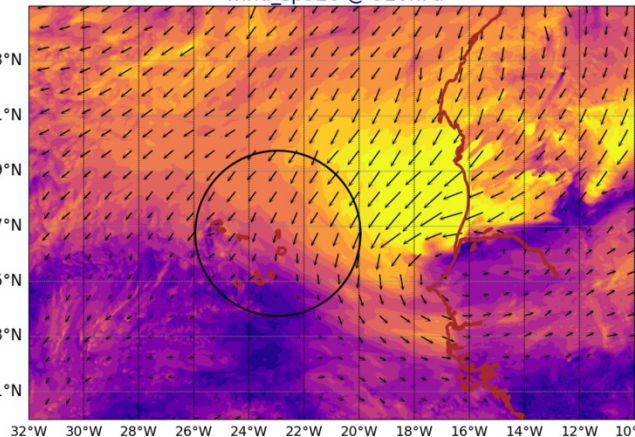
AROME25 20240615-12-UTC -ech(12h)
wind_sp920 @ 920hPa



AROME25 20240616-12-UTC -ech(36h)
wind_sp920 @ 920hPa



AROME25 20240617-12-UTC -ech(60h)
wind_sp920 @ 920hPa



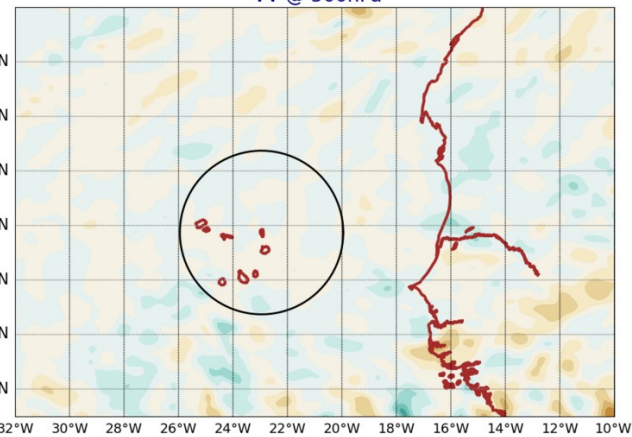
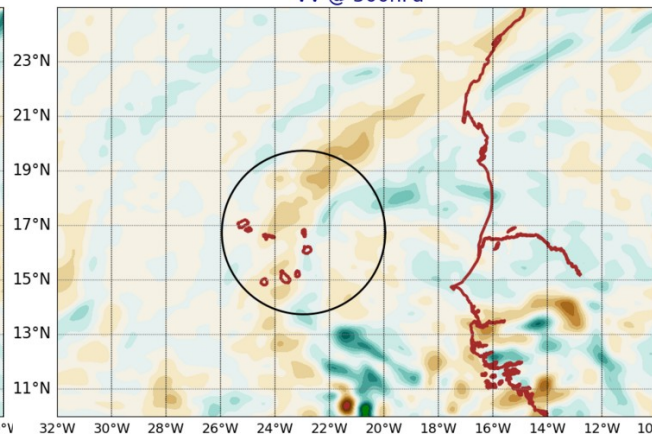
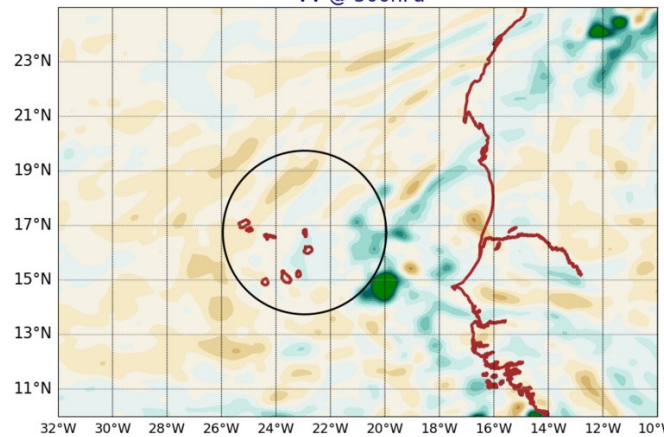
AROME VV @ 500hPa

AROME LWP+IWP

AROME25 20240615-12-UTC -ech(12h)
VV @ 500hPa

AROME25 20240616-12-UTC -ech(36h)
VV @ 500hPa

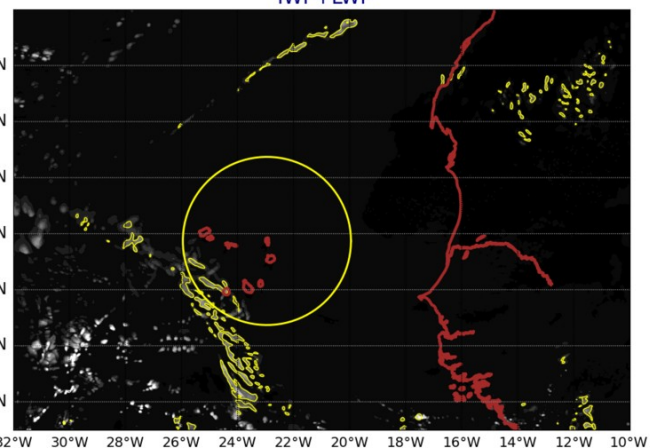
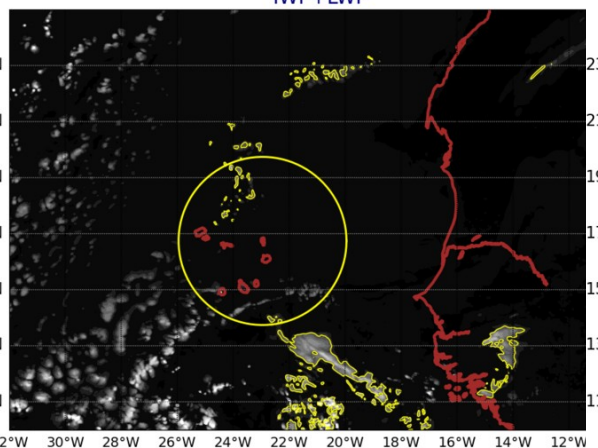
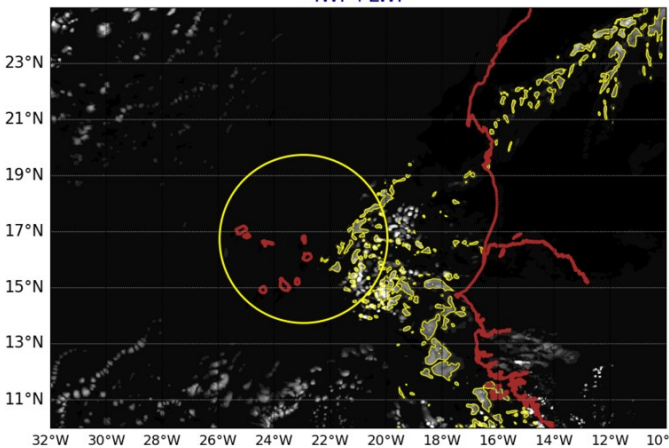
AROME25 20240617-12-UTC -ech(60h)
VV @ 500hPa



AROME25 20240615-12-UTC -ech(12h)
IWP+LWP

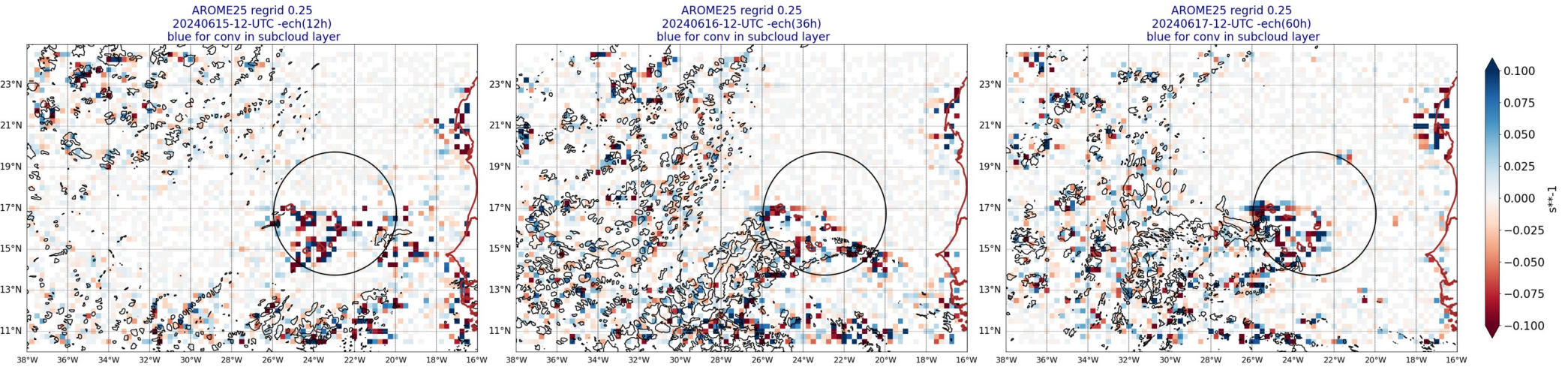
AROME25 20240616-12-UTC -ech(36h)
IWP+LWP

AROME25 20240617-12-UTC -ech(60h)
IWP+LWP



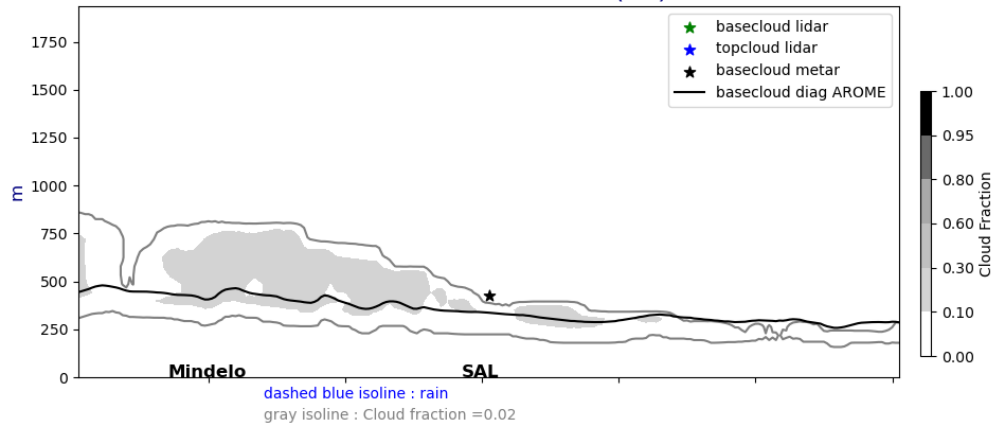
Smoc

-blue for conv in subcloud layer-

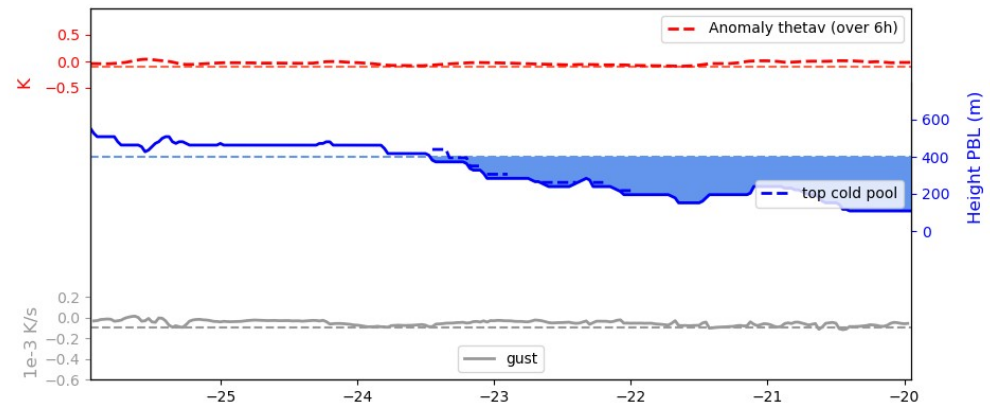
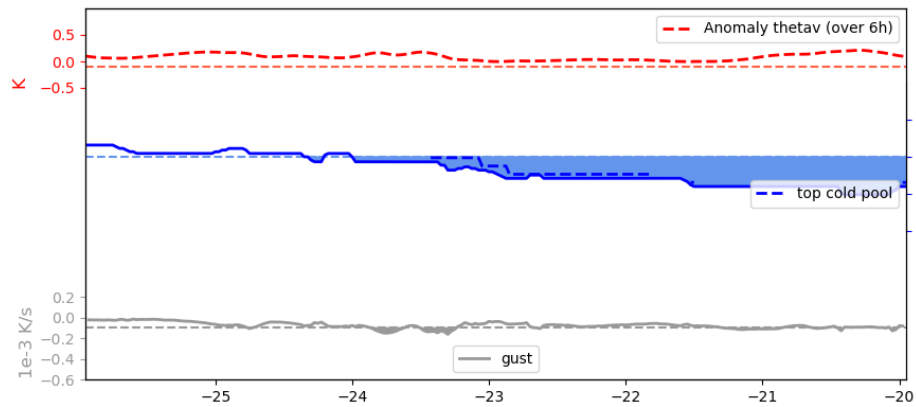
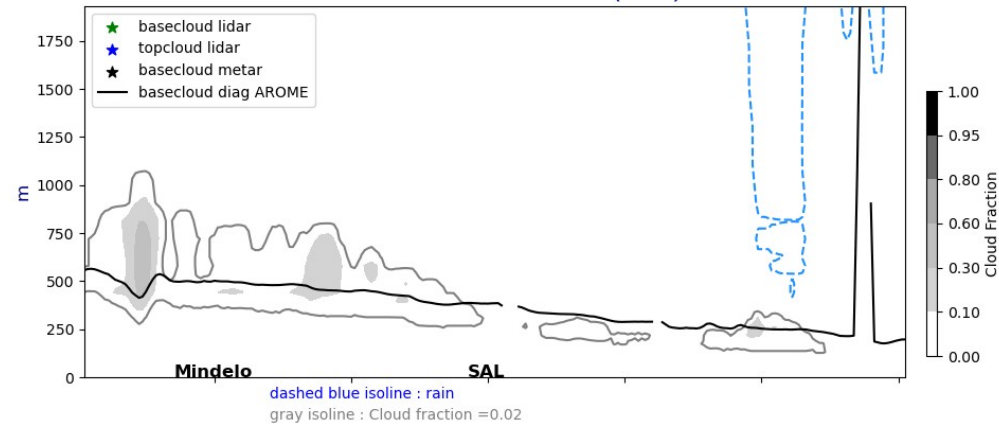


Lat. cross section @17°5N fct : 1h, 12h

Cross section E/W @ 17.5N
20240615-01-UTC ech(1h)

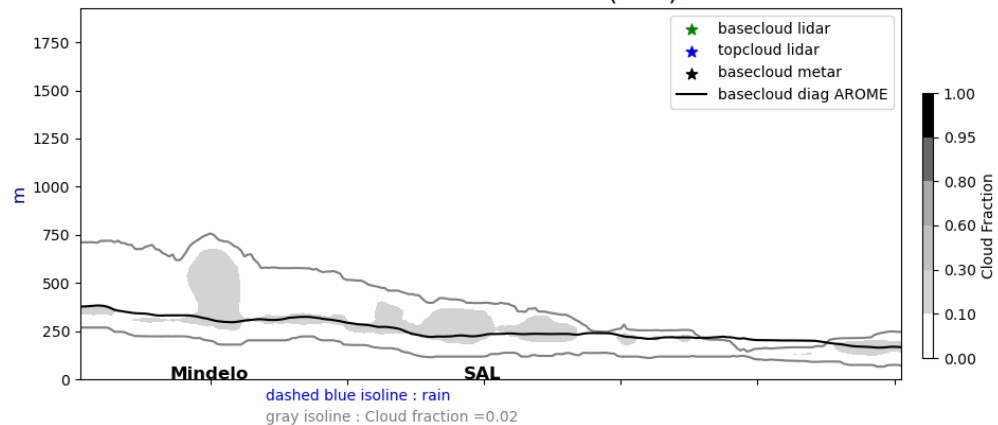


Cross section E/W @ 17.5N
20240615-12-UTC ech(12h)

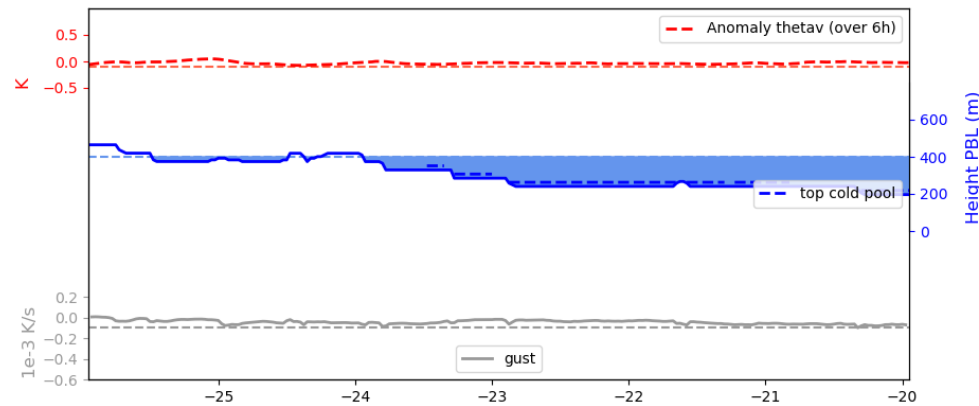
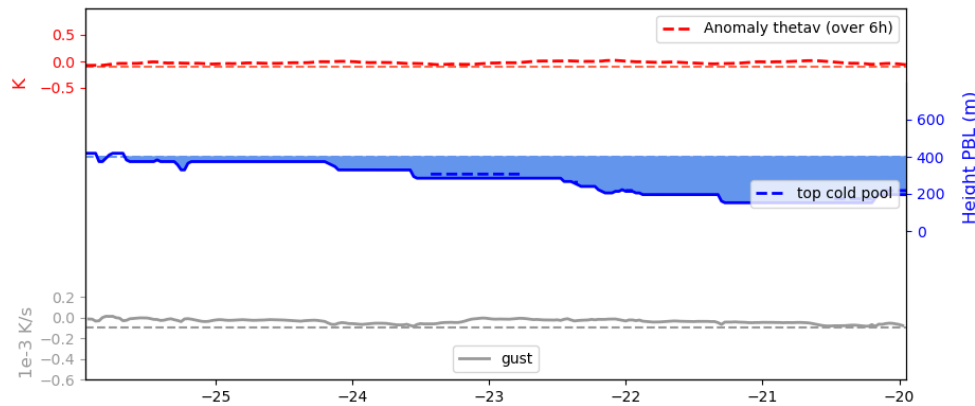
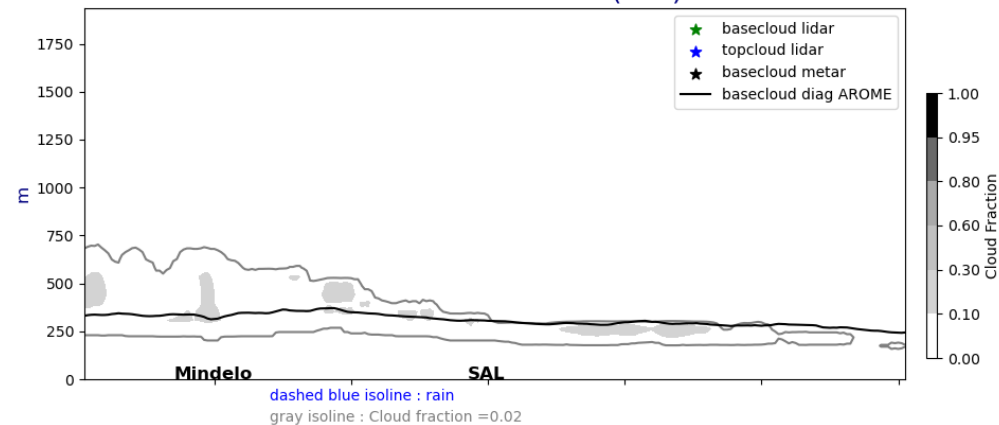


Lat. cross section @17°5N fct : 36h, 60h

Cross section E/W @ 17.5N
20240616-12-UTC ech(36h)

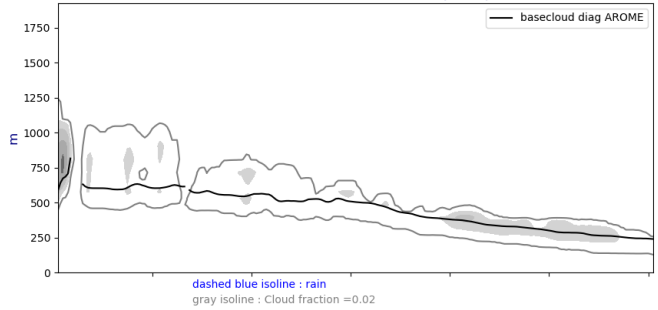


Cross section E/W @ 17.5N
20240617-12-UTC ech(60h)

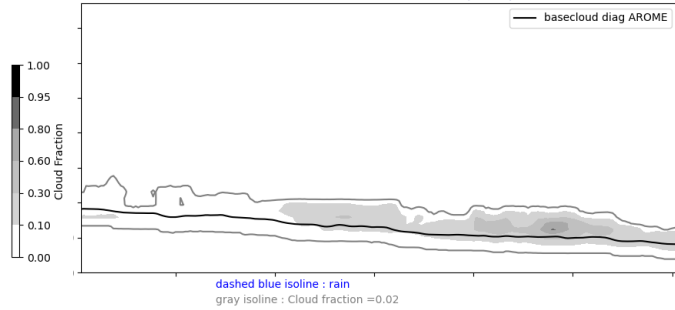


Lat. cross section@19°5N ech : 12h,36h,60h

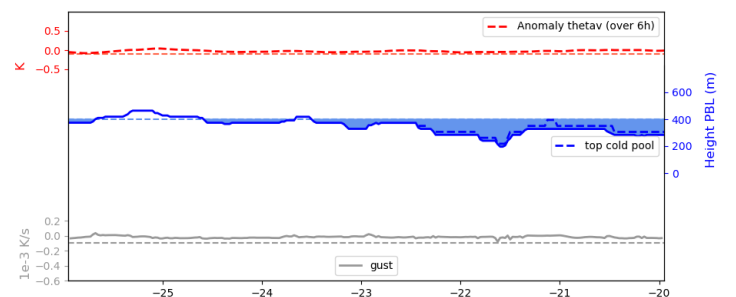
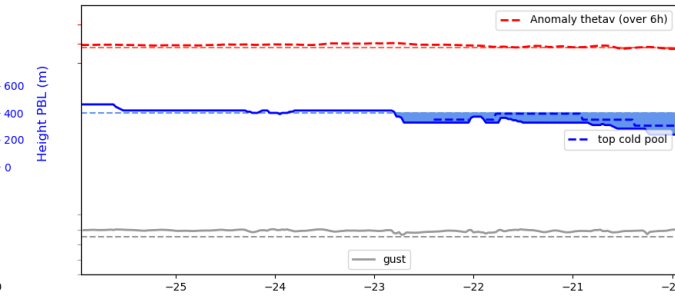
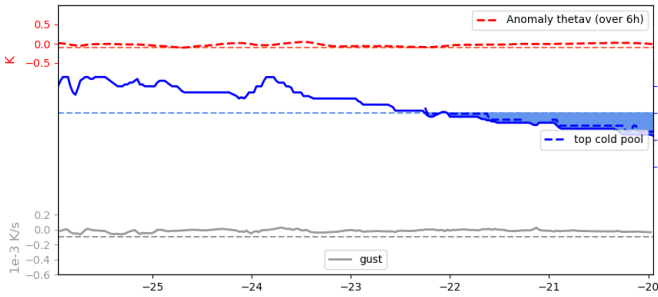
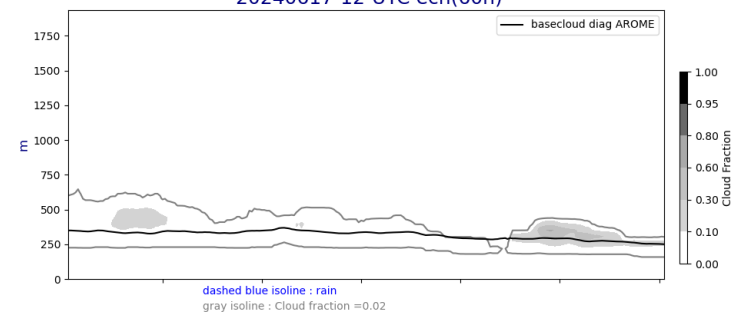
Cross section E/W @ 19.5N
20240615-12-UTC ech(12h)



Cross section E/W @ 19.5N
20240616-12-UTC ech(36h)

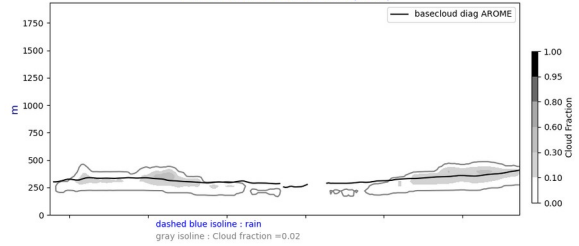


Cross section E/W @ 19.5N
20240617-12-UTC ech(60h)

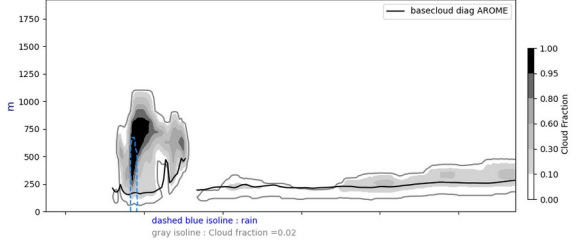


Lon. cross section @22W & 26W fct : 12h,36h,60h

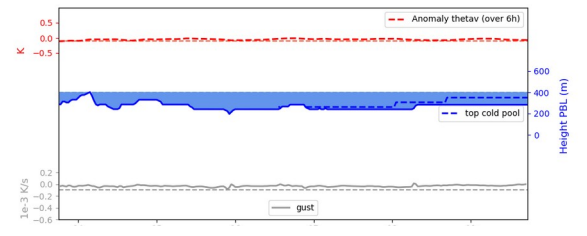
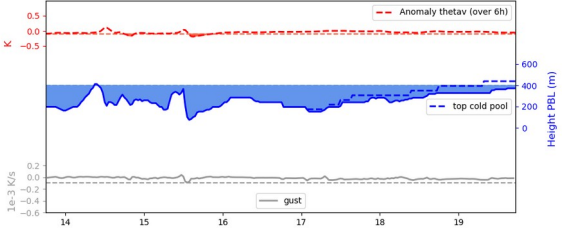
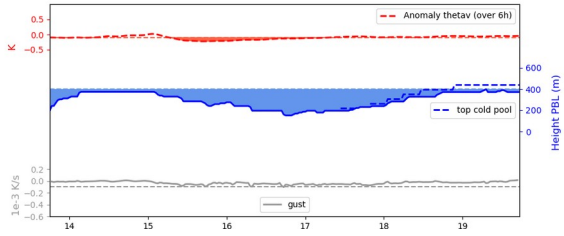
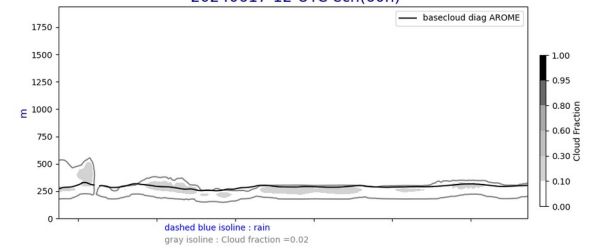
Cross section S/N @ -22W
20240615-12-UTC ech(12h)



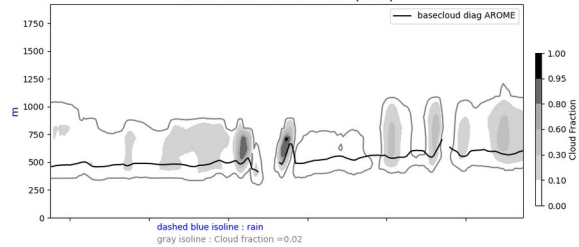
Cross section S/N @ -22W
20240616-12-UTC ech(36h)



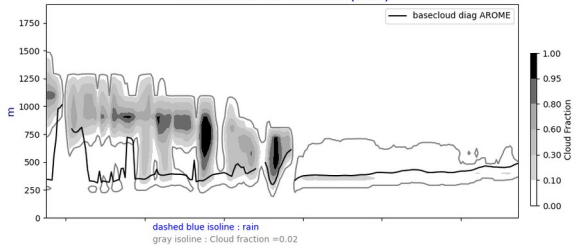
Cross section S/N @ -22W
20240617-12-UTC ech(60h)



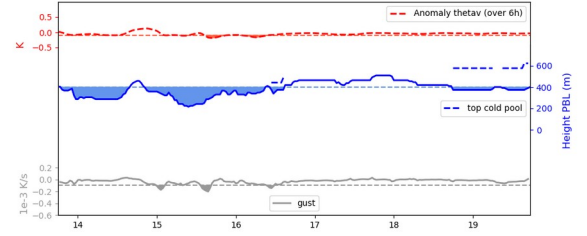
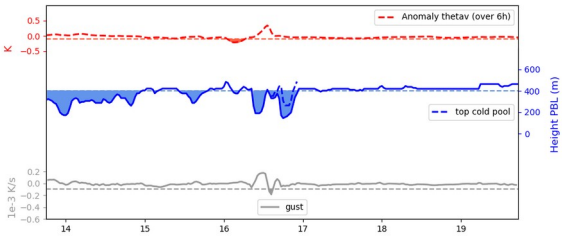
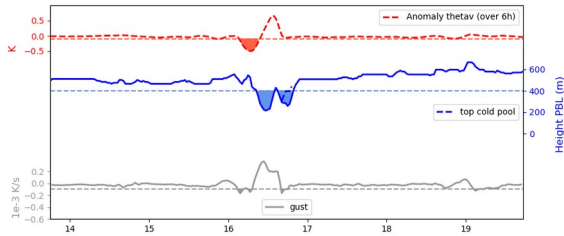
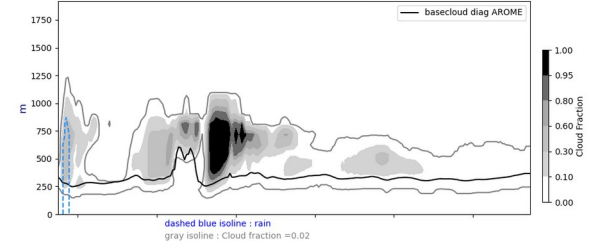
Cross section S/N @ -26W
20240615-12-UTC ech(12h)



Cross section S/N @ -26W
20240616-12-UTC ech(36h)



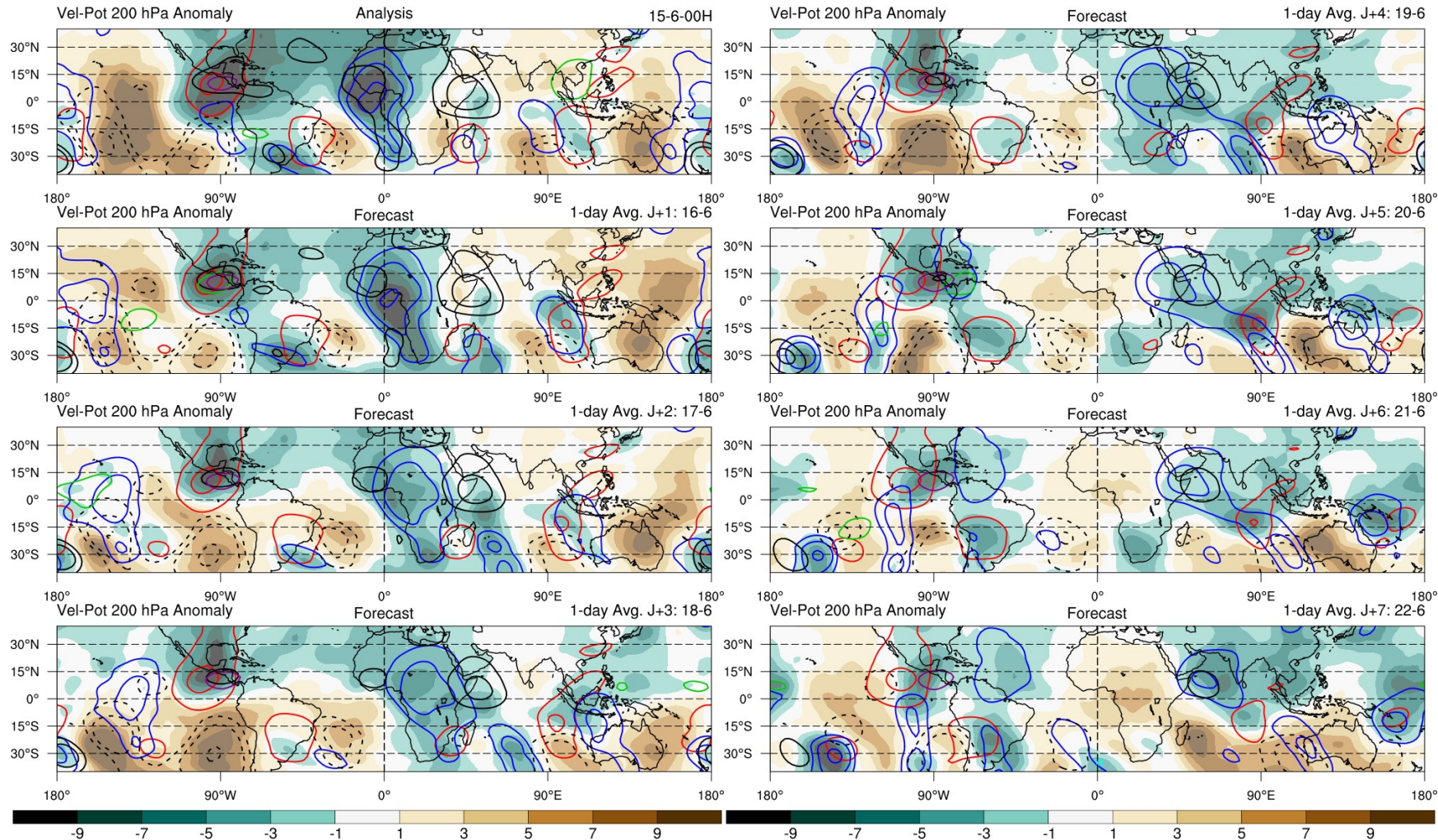
Cross section S/N @ -26W
20240617-12-UTC ech(60h)



Prévision semaine en cours J - J+7

A centrer sur SAL + réduire période
obs en haut

Ondes : potentiel de vitesse à 200 hPa, jours J à J+7 (centrer sur 90W-20E)



contact: philippe.peyrille@meteo.fr

Contours every -7, -5, -3, -1.5, m²s⁻¹

- TD
- MRG
- Kelvin
- Rossby
- MJO
- low

Important: solid contours show divergence
For MJO and low freq, dashed contours show the convergence

contact: philippe.peyrille@meteo.fr

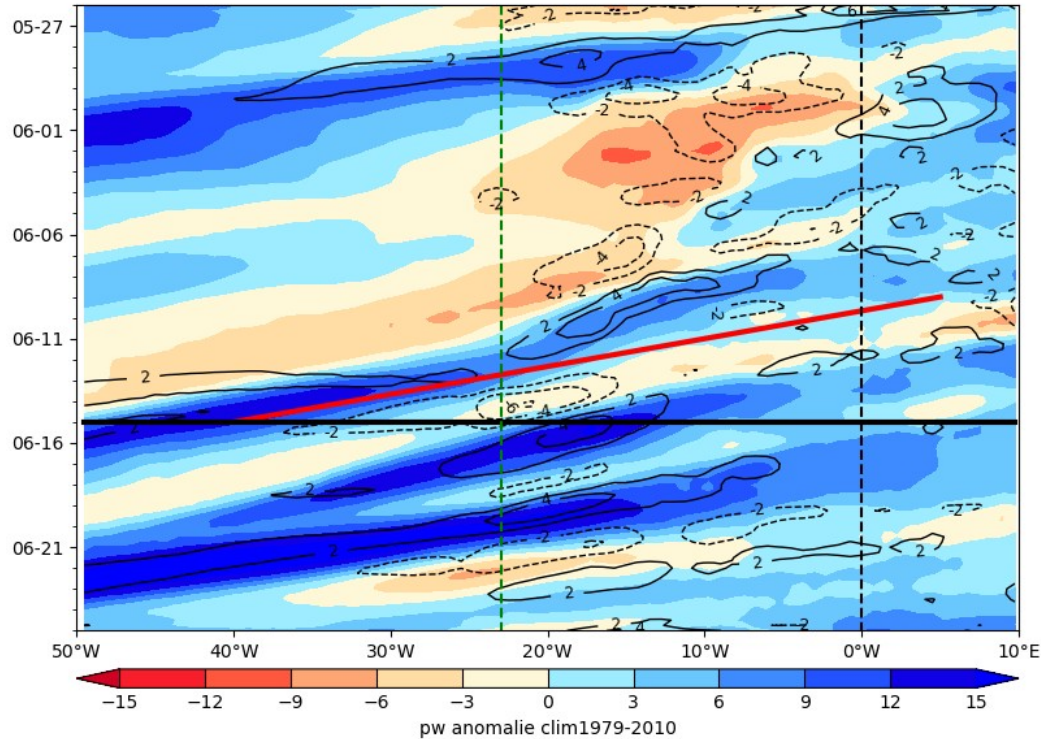
Contours every -7, -5, -3, -1.5, m²s⁻¹

- TD
- MRG
- Kelvin
- Rossby
- MJO
- low

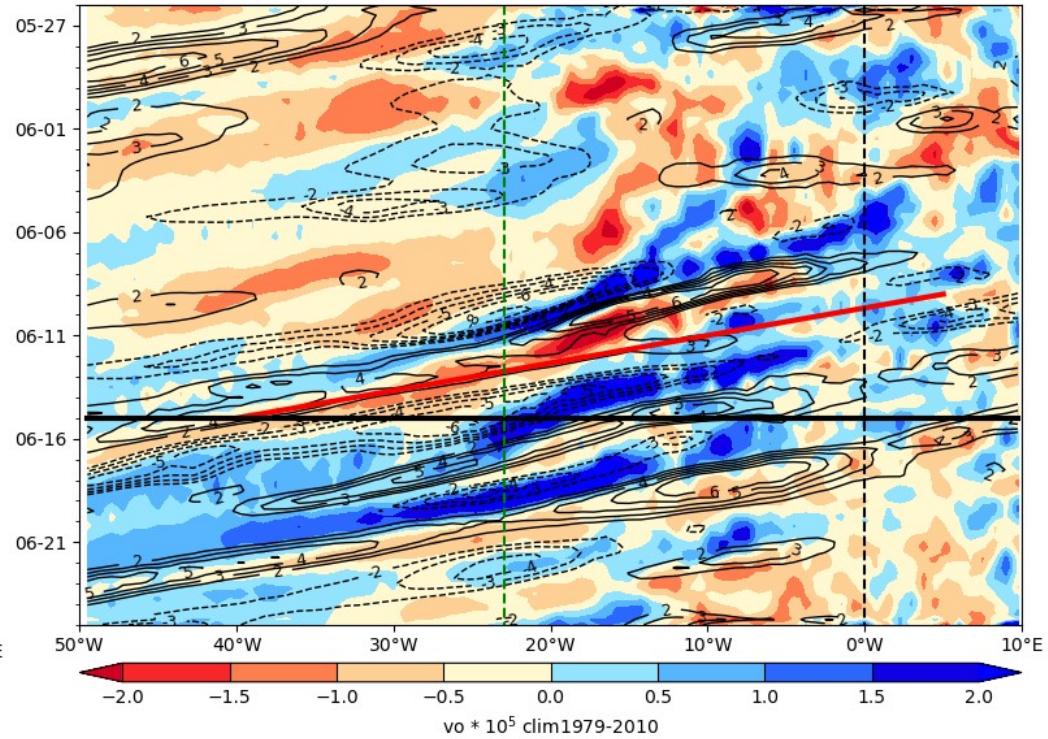
Important: solid contours show divergence
For MJO and low freq, dashed contours show the convergence

Hovmoller anomalie

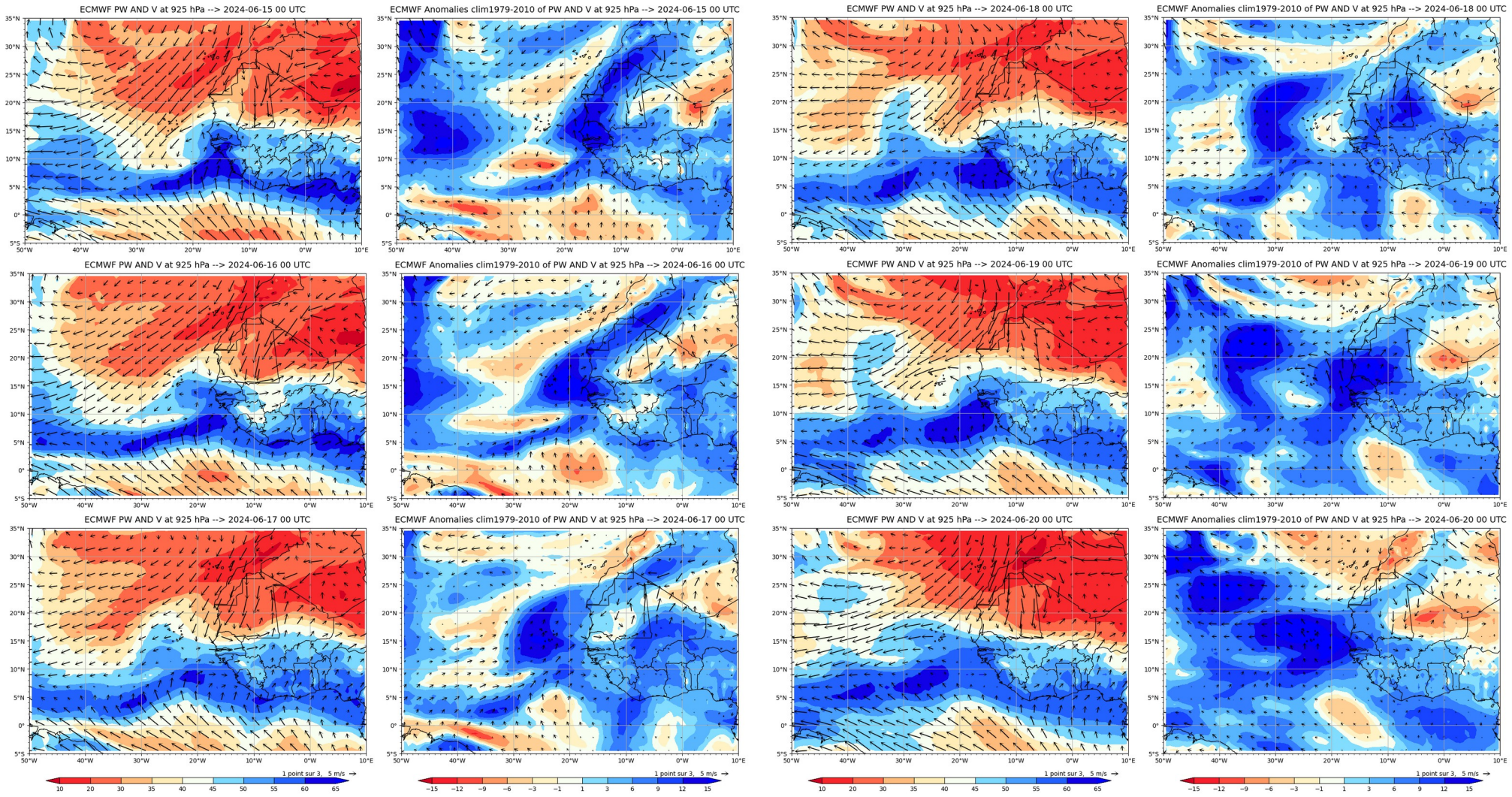
ECMWF PW (color) AND V at 925 hPa 2024-06-15



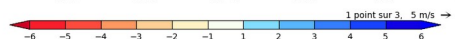
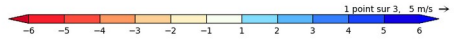
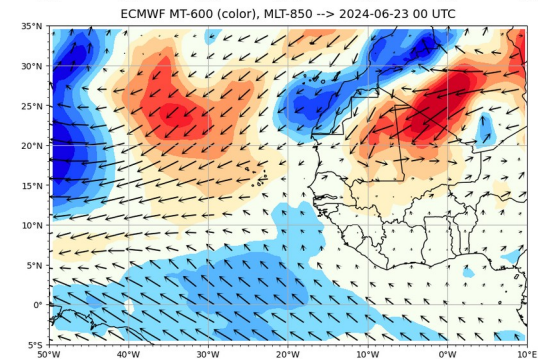
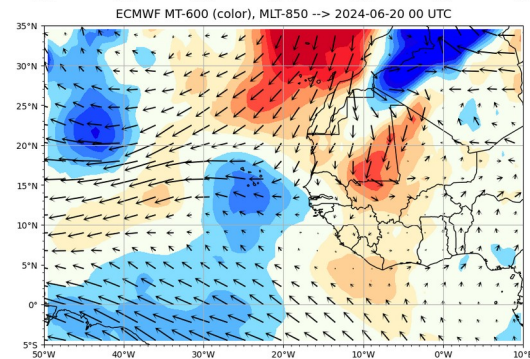
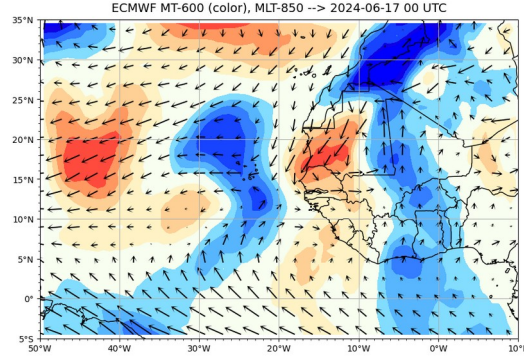
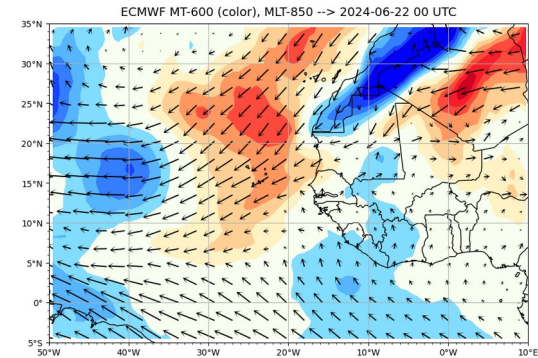
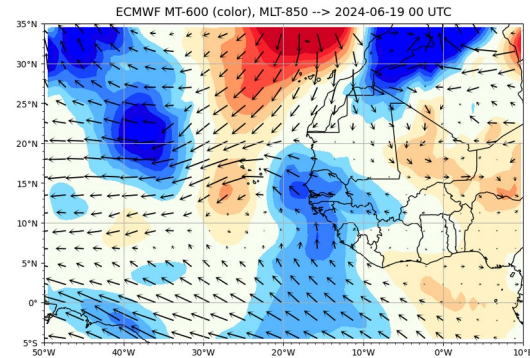
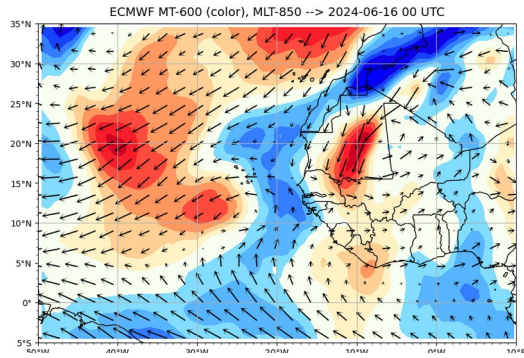
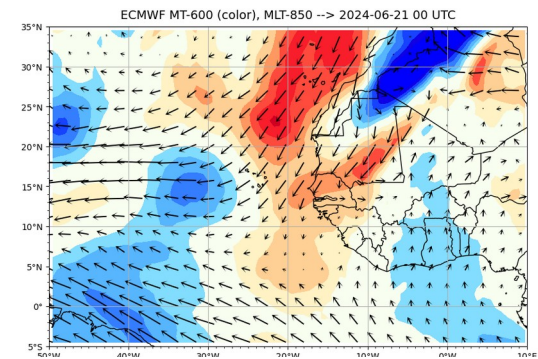
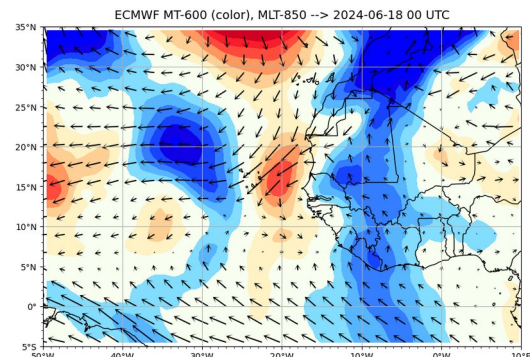
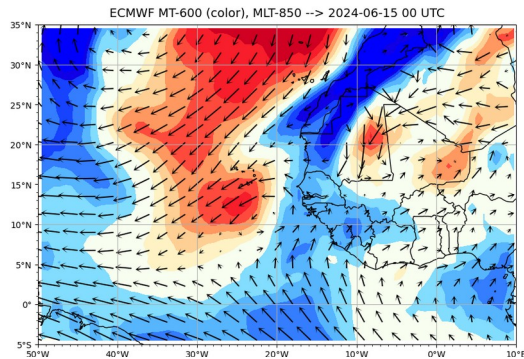
ECMWF Vorticity 850 hPa (color), V-700 hPa 2024-06-15



Carte journalière de PW et Vent à 925 hPa – brut et anomalies

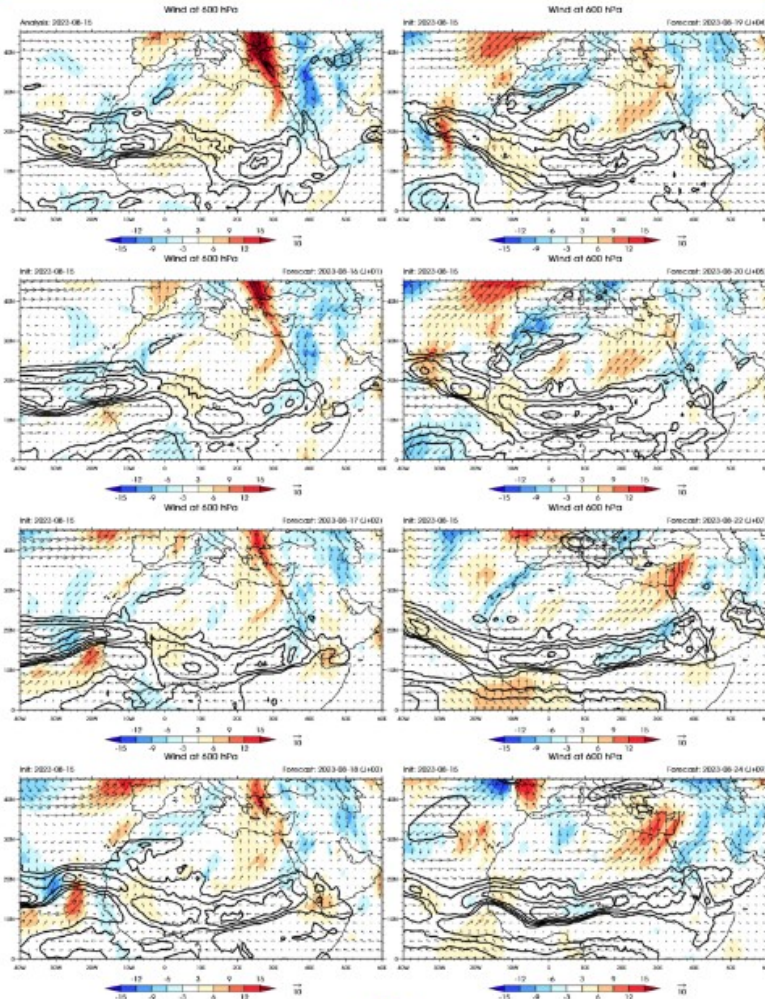


Flux de mousson



Cartes à 600 hPa

15 août 2023



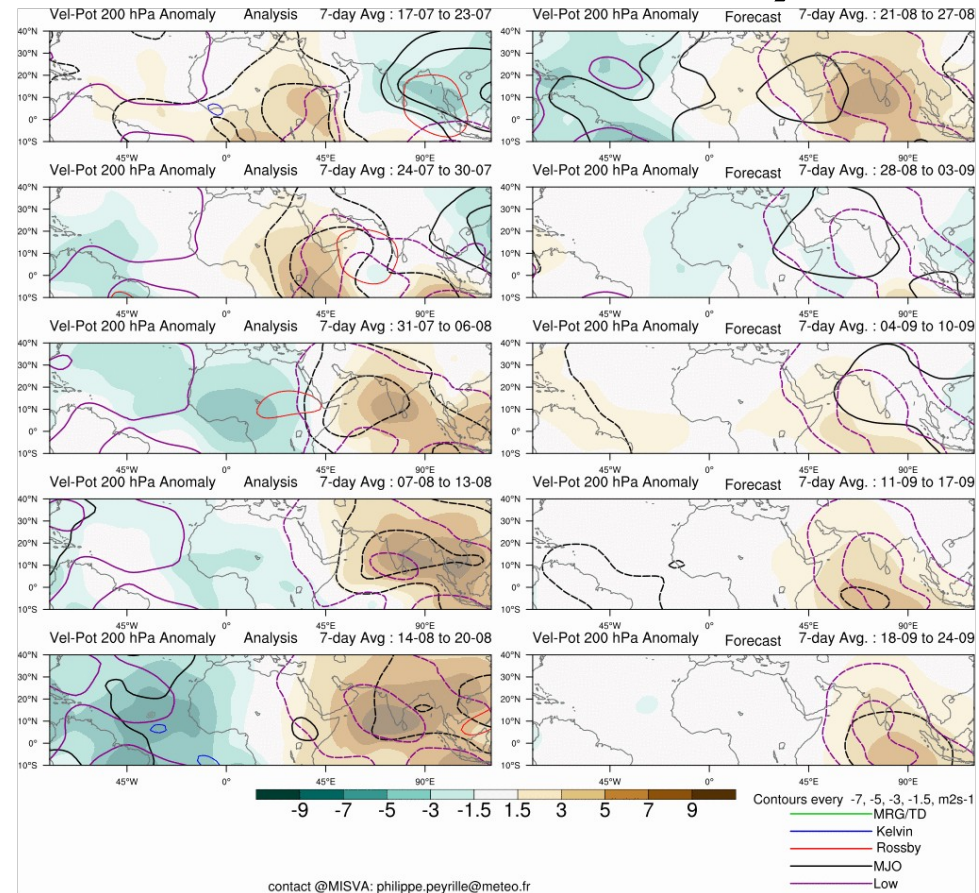
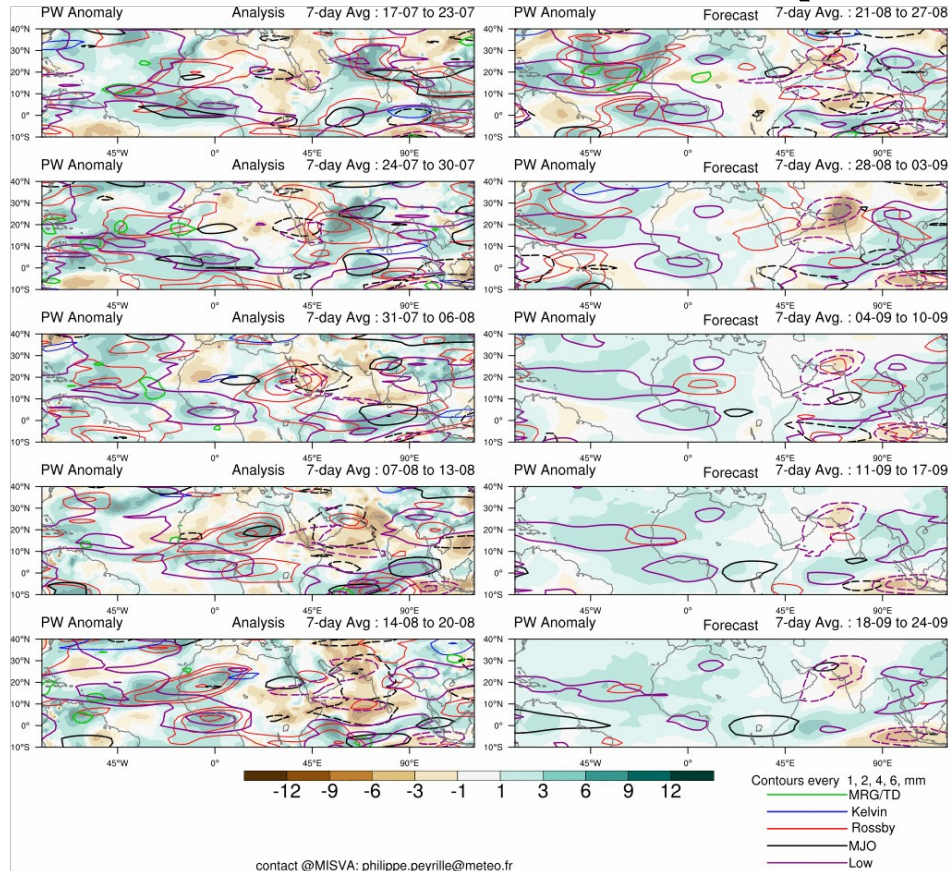
À centrer sur SAL

- Bien pour la position du JEA

Prévision mensuelle mis à jour 1 fois /semaine

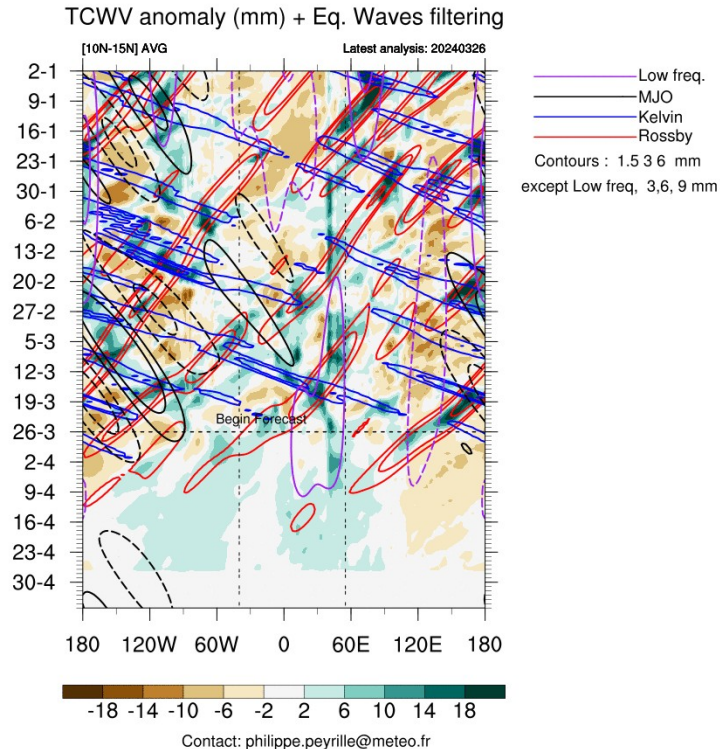
Prévision mensuelle de la semaine

PW et VP200 (à zoomer sur SAL)

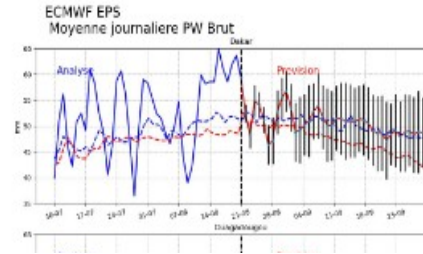
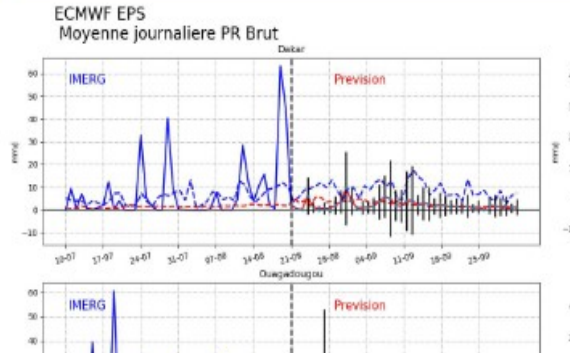


Hovmoller previ mensuelle zoomé sur SAL (PW, VP, SF850)

À zoomer sur SAL (50W,
10E) sur la latitude de
SAL $\pm 1.5^\circ$

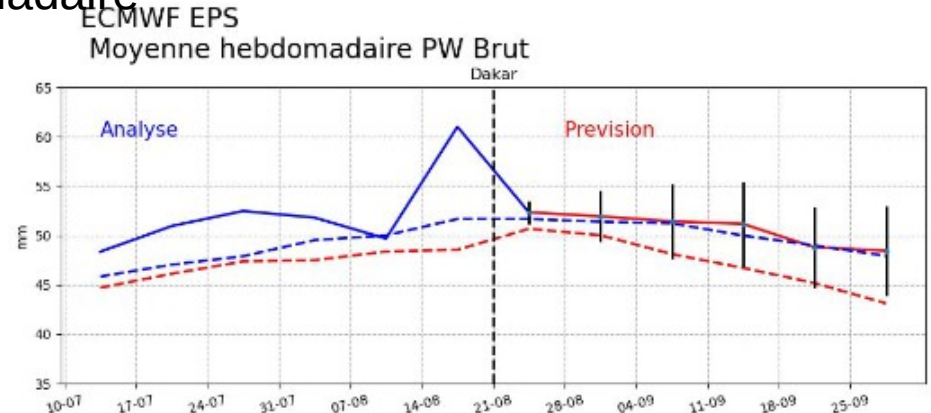
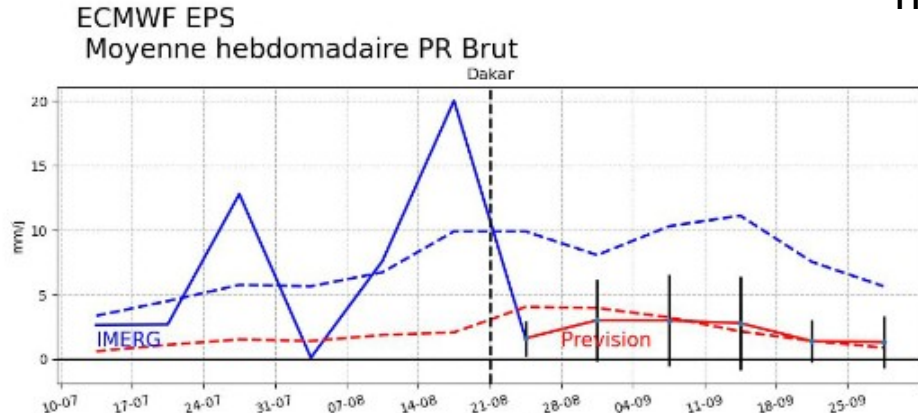


Serie temporelle PW, PR centrer sur sur SAL (+ EKE)



journalier

hebdomadaire



Aide pour la Synthèse

Param	J	J+1	J+2	J+3	J+4	J+5	Ondes
PW/ PW*							
VP200							
Omega 500							
Tourbillon							
Vt 700 hPa							
PBL height							
Type MCS prévu							

