

DRAFT SUMMARY MAESTRO

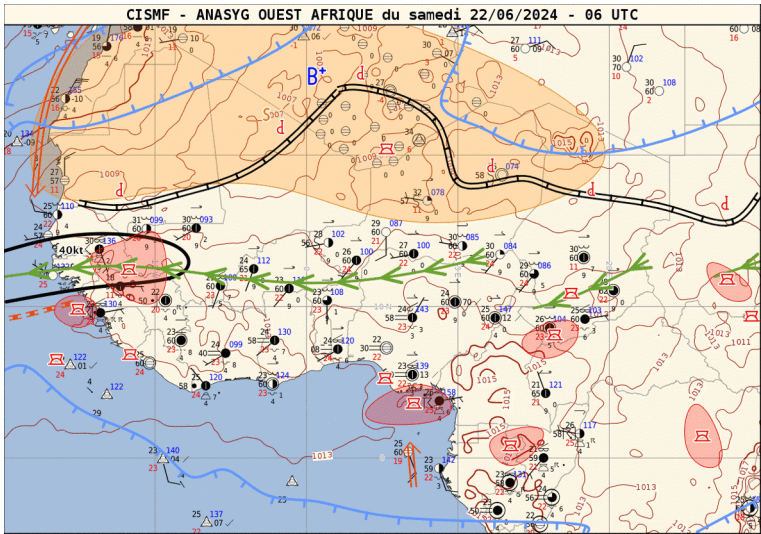
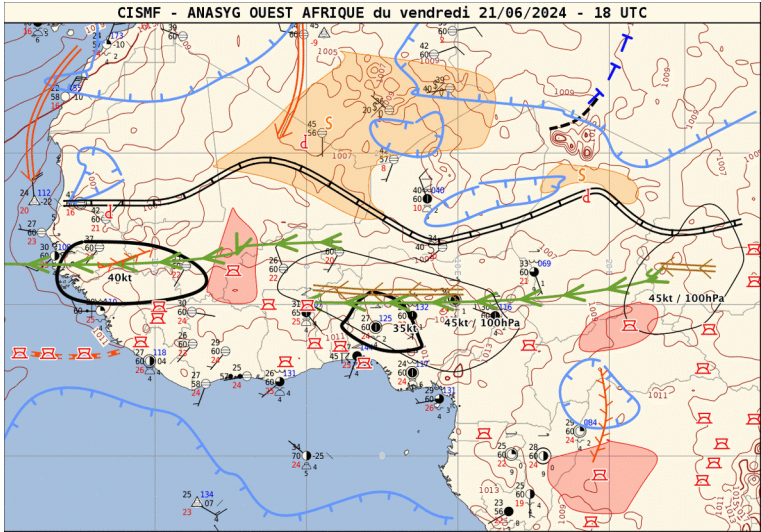
Four parts :

- evaluation J-1
- short term forecast J-J+36h
- week forecast J-J+7
- subseasonal forecast (a few weeks) : updated once a week

Evaluation Day-1

- West Africa ANASYG + satellite image (feedback to improve our experience)
- DIRAG ANASYG
- Precipitable Water, Meridional Transport J-1
- Carte PW + FFT waves J-1

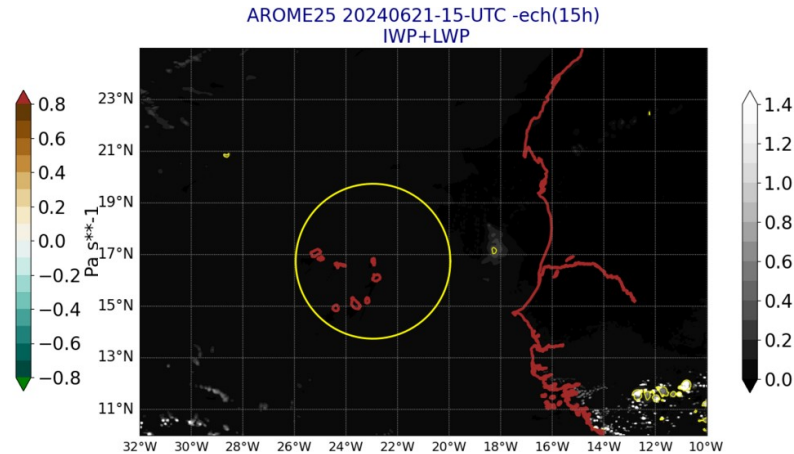
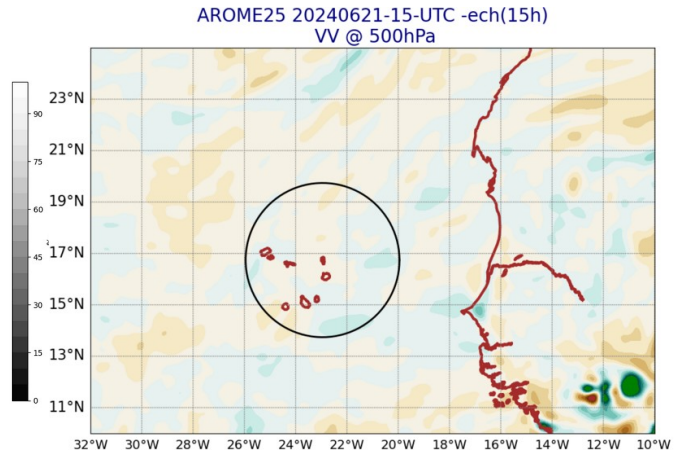
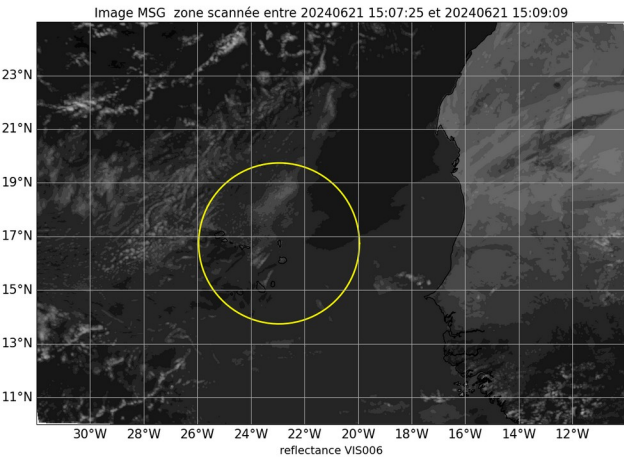
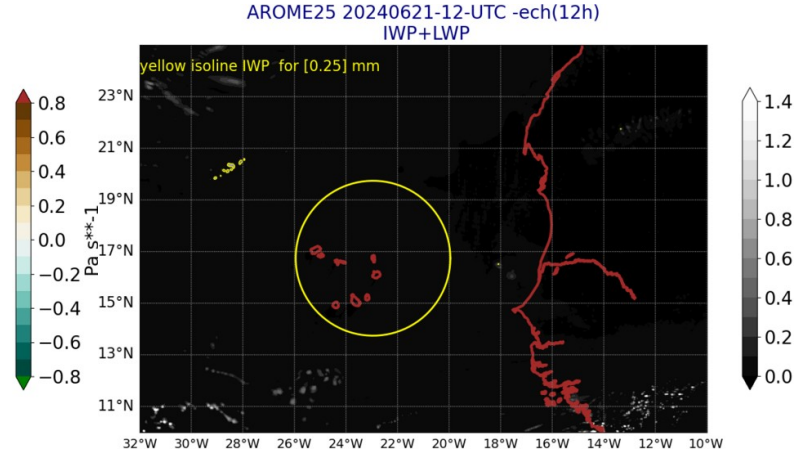
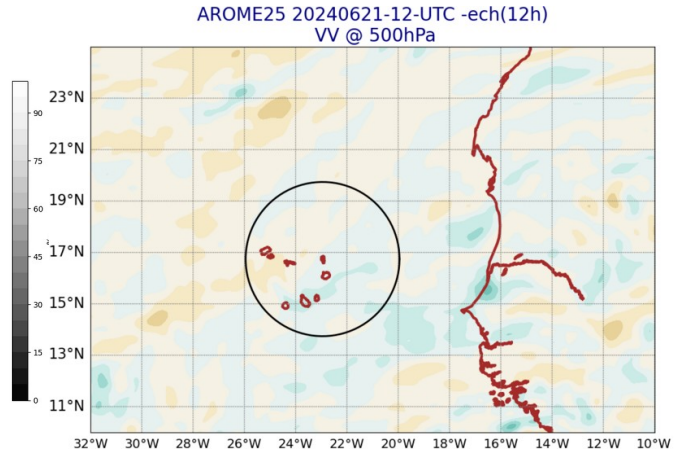
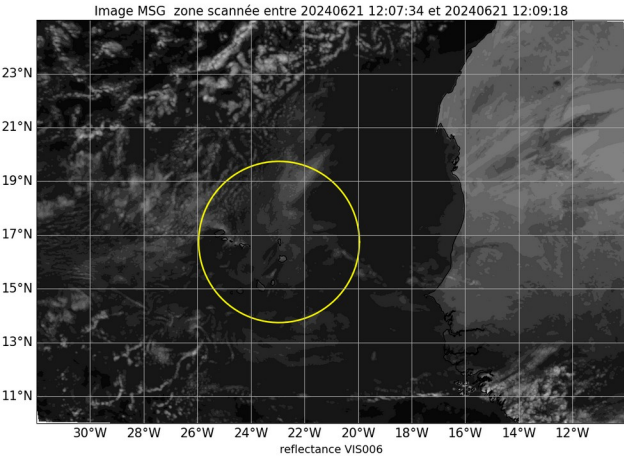
Anasyg J-1 18UTC et J 06UTC



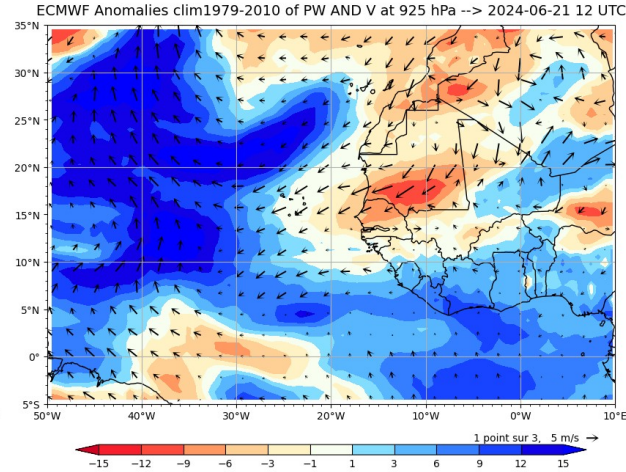
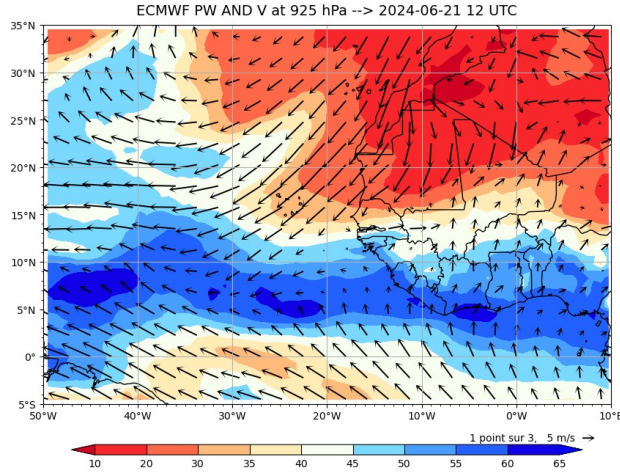
- + anasyg dirag

Image MSG Visible J-1 12 and 15 UTC

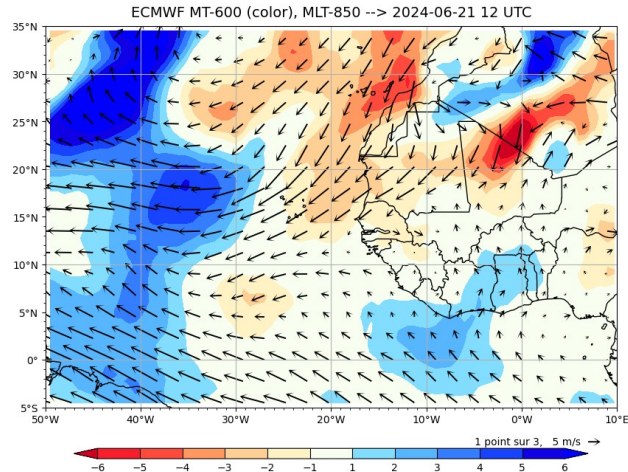
Arome J-1 12 and 15 UTC



Precipitable Water - Merid. Transport - Waves J-1



Ajouter ondes J-1

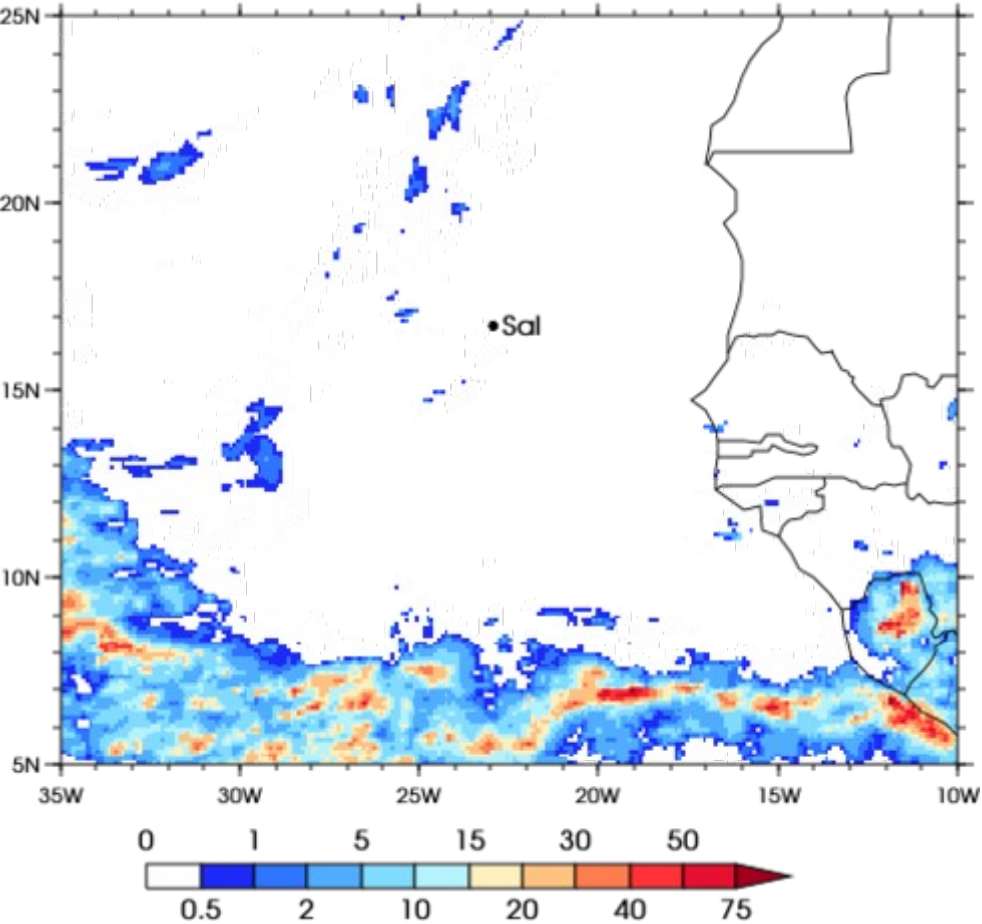


Precipitation IMERG and AROME J-1

3IMERGHHE GPM IMERG Early Precipitation

Daily accumulated: 2024-06-21

Units: mm/day

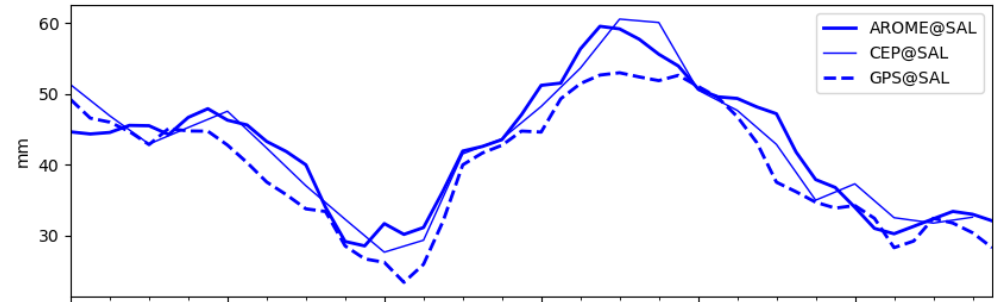


OBSERVATIONS J-1

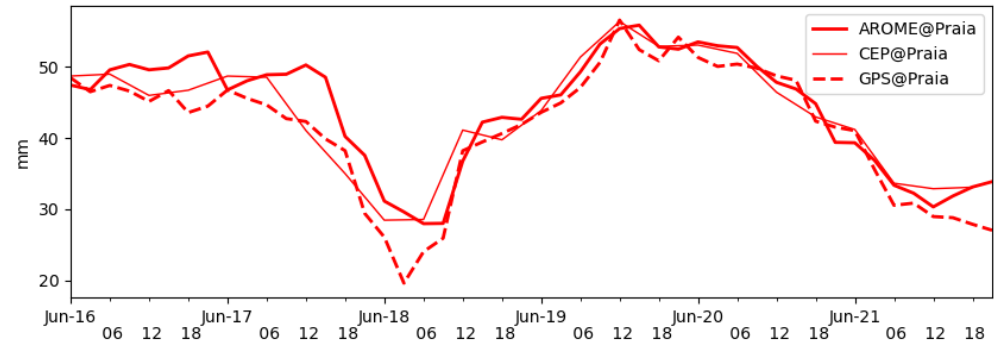
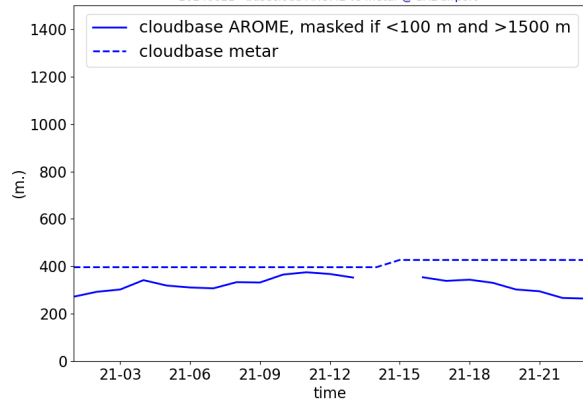
Lidar@ mindelo
metar@sal

GPS @ Sal
GPS @ Praia

PW AROME & CEP (fct 0-23h) vs GPS
20240616 -20240621

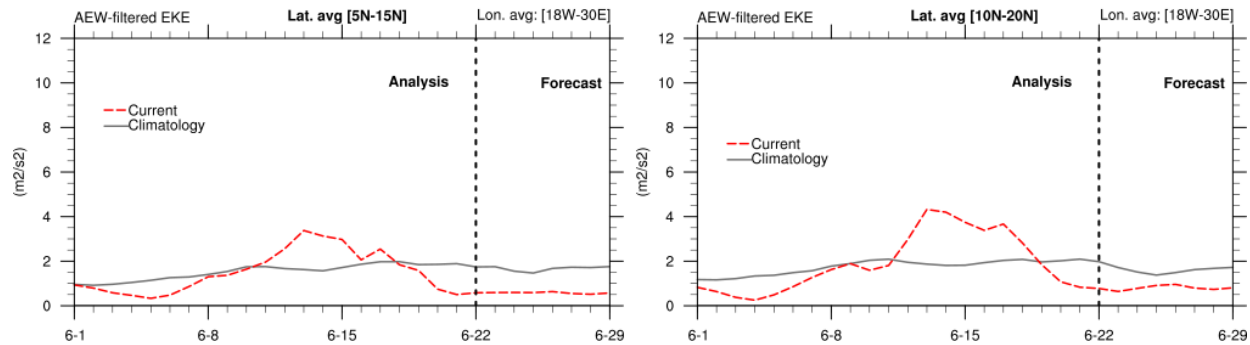
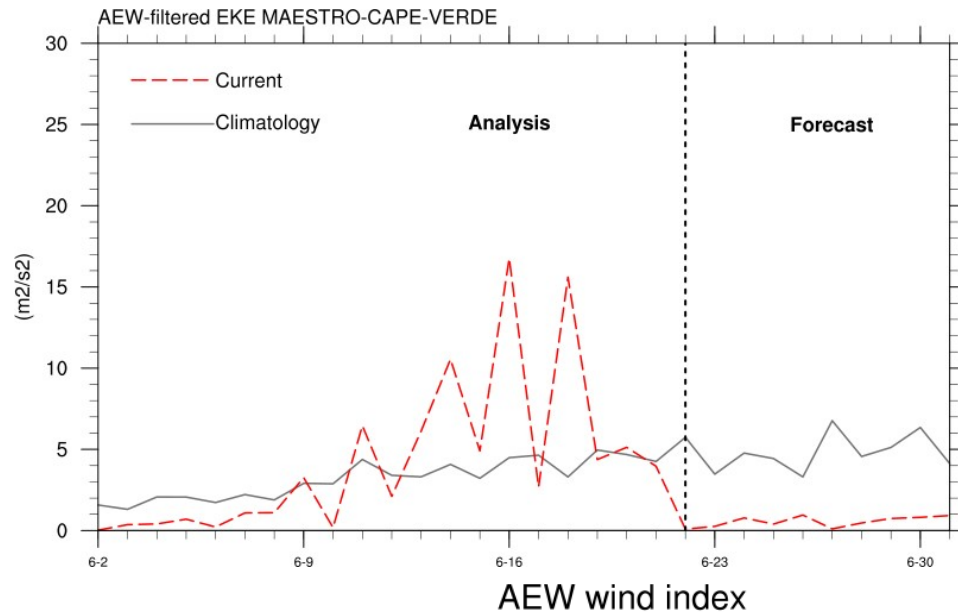
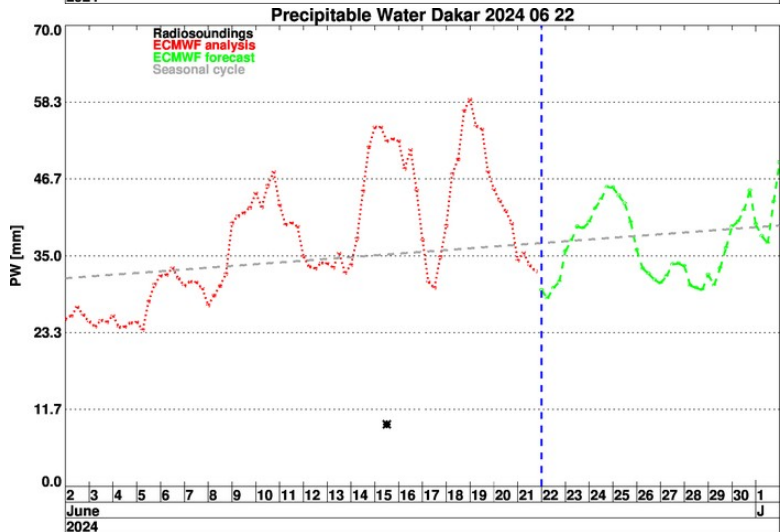
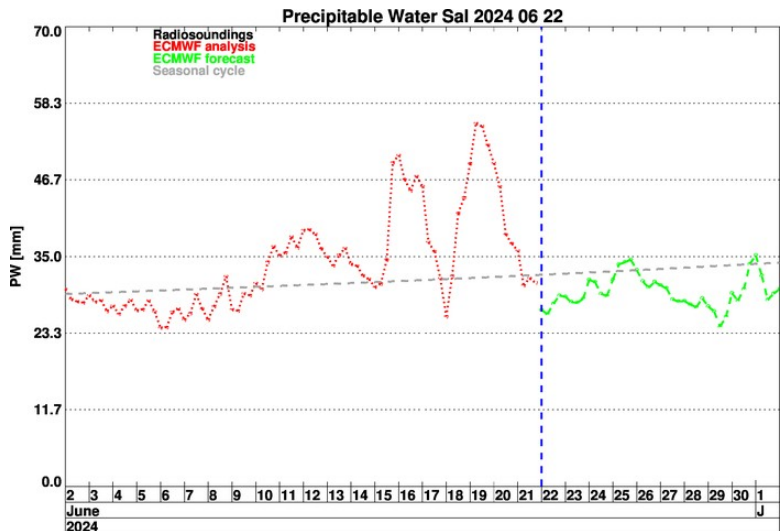


20240621 - basecloud AROME vs metar @ SAL airport



Short term forecast J- J+36h

Temporal evolution PW Sal et Dakar + EKE



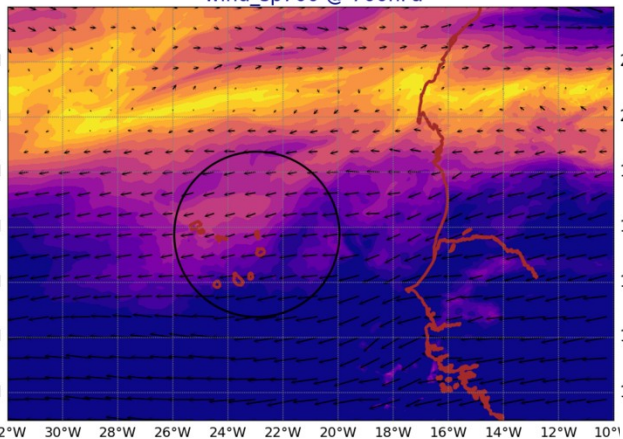
FIGURES AROME

- PW J-J+36h 850 hPa ?
- Pbl height
- Avoir une coupe zonale / meridienne de qv ?

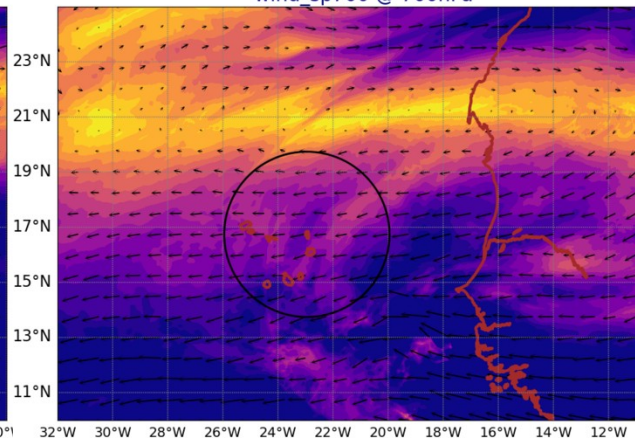
AROME Wind @ 700 hPa

AROME Wind @ 920 hPa

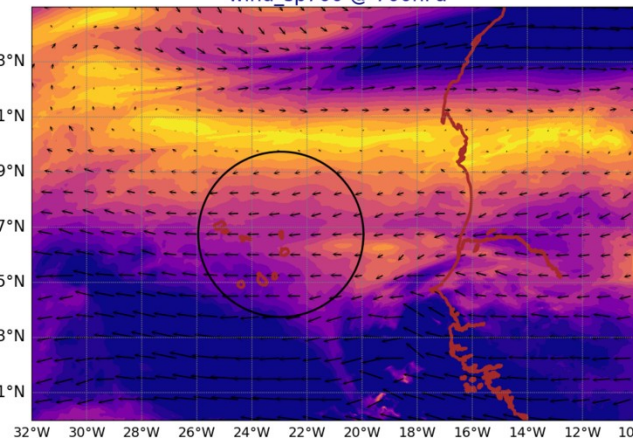
AROME25 20240622-12-UTC -ech(12h)
wind_sp700 @ 700hPa



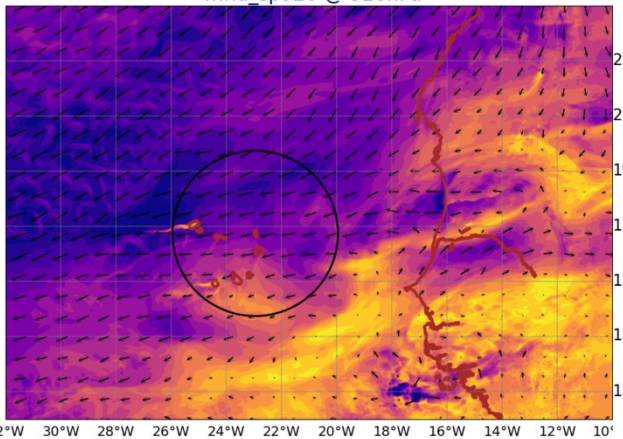
AROME25 20240623-12-UTC -ech(36h)
wind_sp700 @ 700hPa



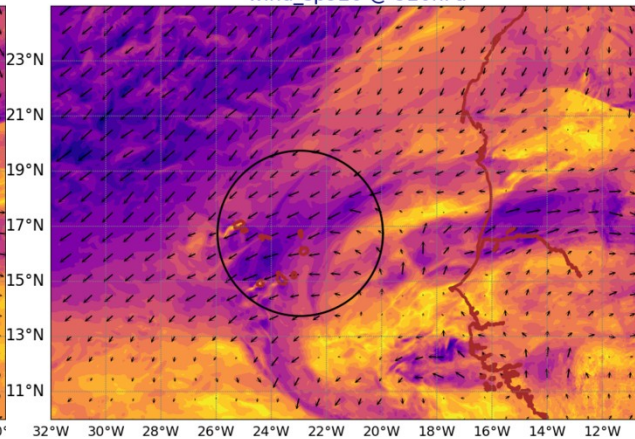
AROME25 20240624-12-UTC -ech(60h)
wind_sp700 @ 700hPa



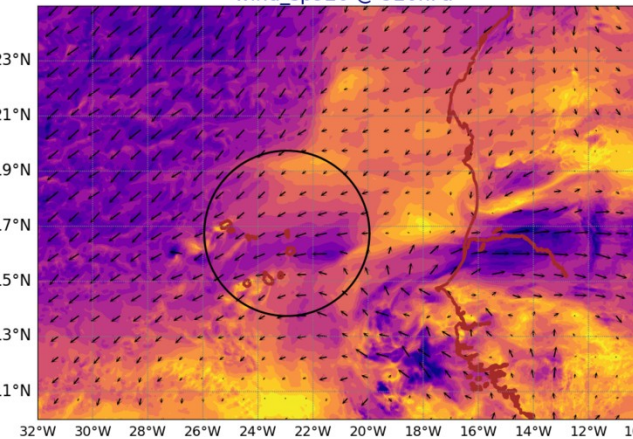
AROME25 20240622-12-UTC -ech(12h)
wind_sp920 @ 920hPa



AROME25 20240623-12-UTC -ech(36h)
wind_sp920 @ 920hPa



AROME25 20240624-12-UTC -ech(60h)
wind_sp920 @ 920hPa



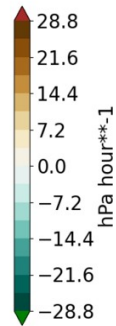
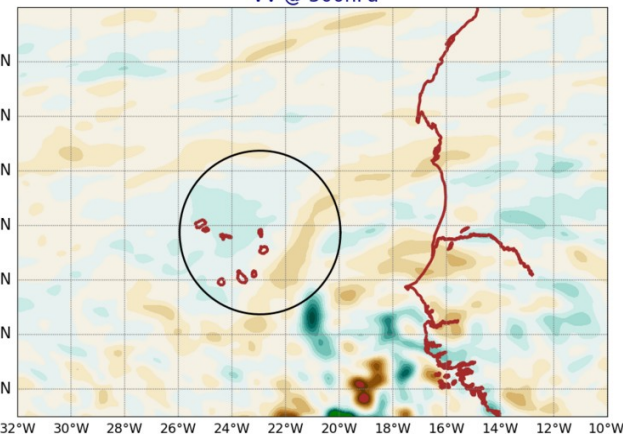
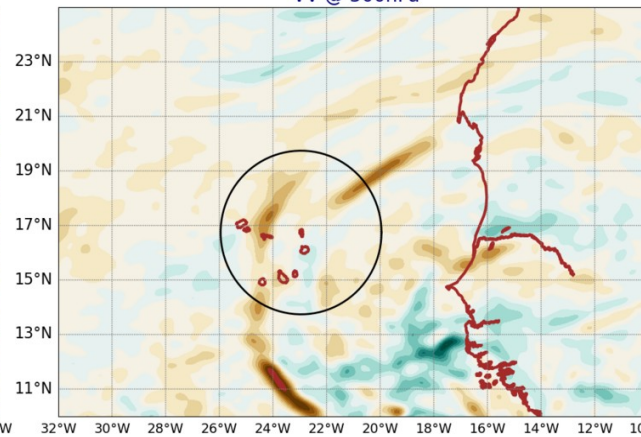
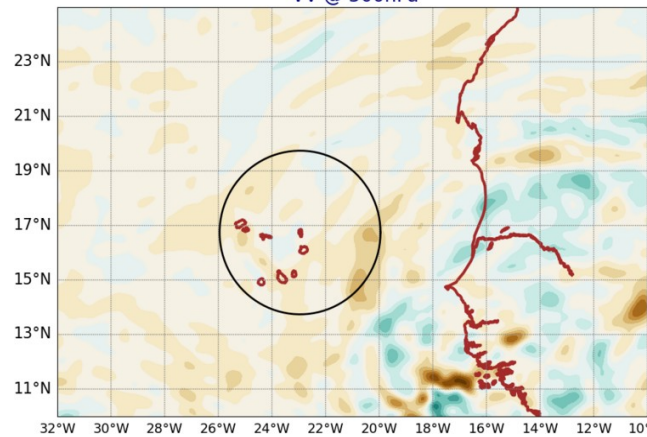
AROME VV @ 500hPa

AROME LWP+IWP

AROME25 20240622-12-UTC -ech(12h)
VV @ 500hPa

AROME25 20240623-12-UTC -ech(36h)
VV @ 500hPa

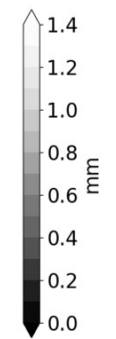
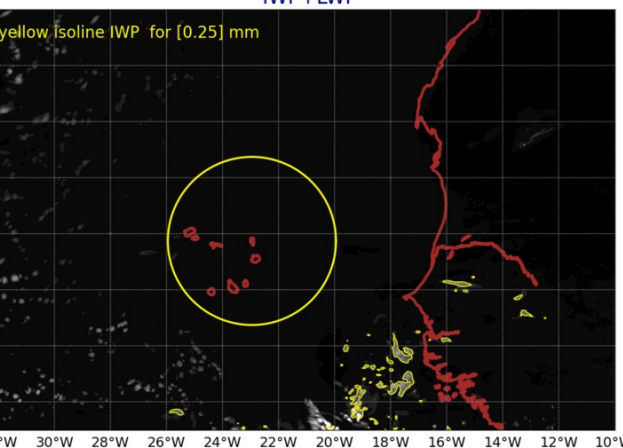
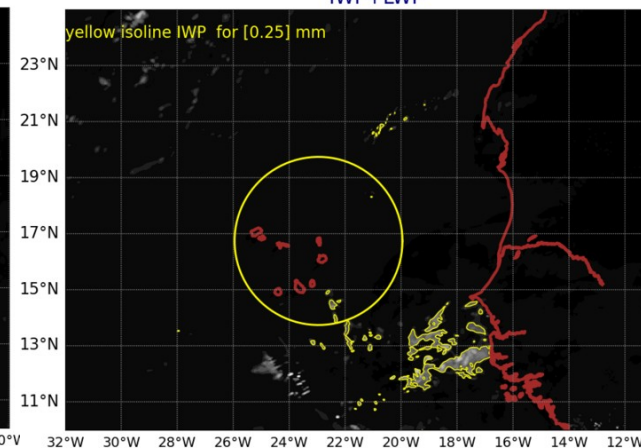
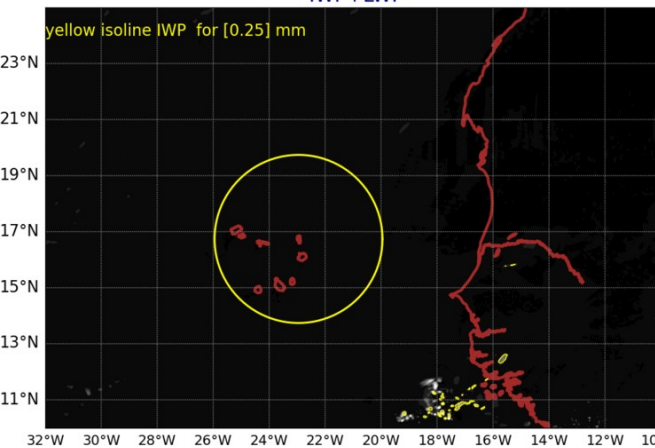
AROME25 20240624-12-UTC -ech(60h)
VV @ 500hPa



AROME25 20240622-12-UTC -ech(12h)
IWP+LWP

AROME25 20240623-12-UTC -ech(36h)
IWP+LWP

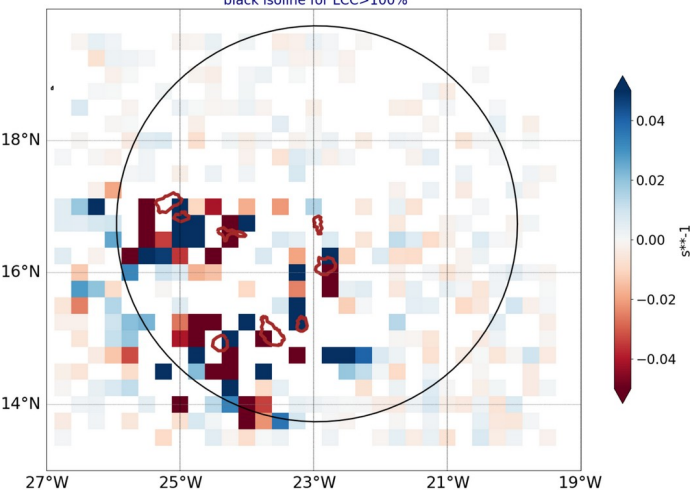
AROME25 20240624-12-UTC -ech(60h)
IWP+LWP



Smoc

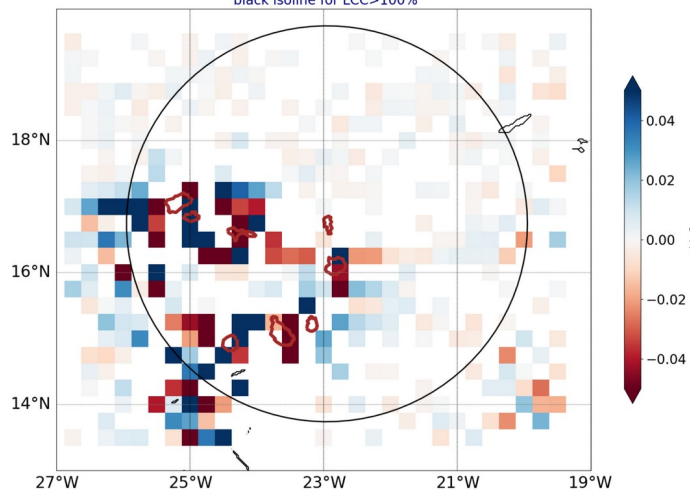
-blue for conv in subcloud layer-
dark isoline for low cloud cover

AROME25 regrid 0.25
20240622-12-UTC -ech(12h)
blue for conv in subcloud layer
black isoline for LCC>100%



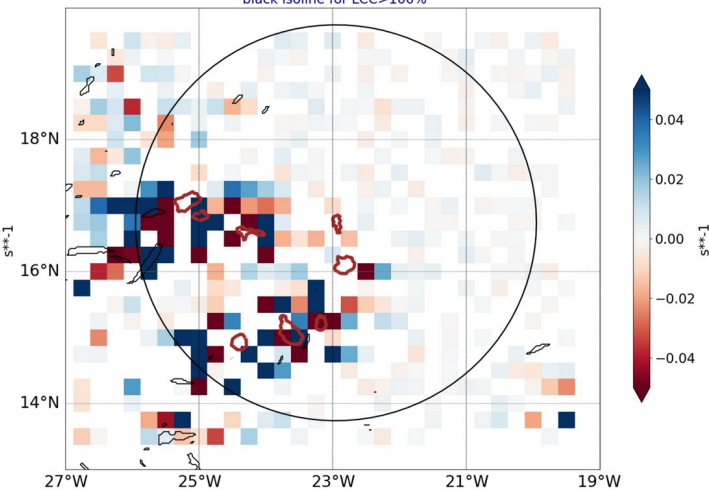
white box where subcloud and cloud layer have same sign of div

AROME25 regrid 0.25
20240623-12-UTC -ech(36h)
blue for conv in subcloud layer
black isoline for LCC>100%



white box where subcloud and cloud layer have same sign of div

AROME25 regrid 0.25
20240624-12-UTC -ech(60h)
blue for conv in subcloud layer
black isoline for LCC>100%



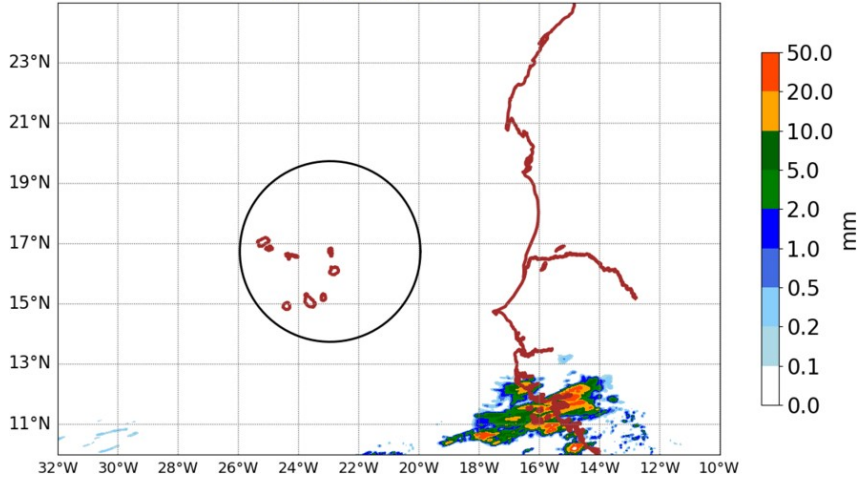
white box where subcloud and cloud layer have same sign of div

over 6h ech 12h and 15h

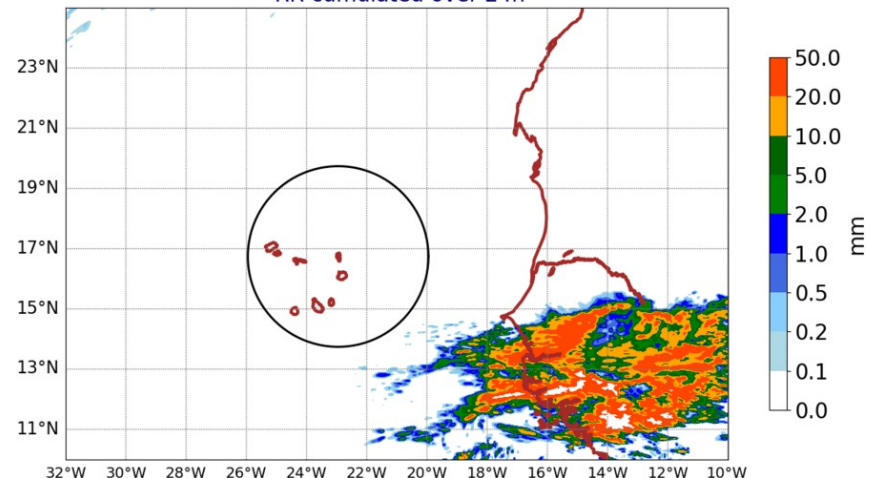
AROME precipitation

over 24h ech 36h and 60h

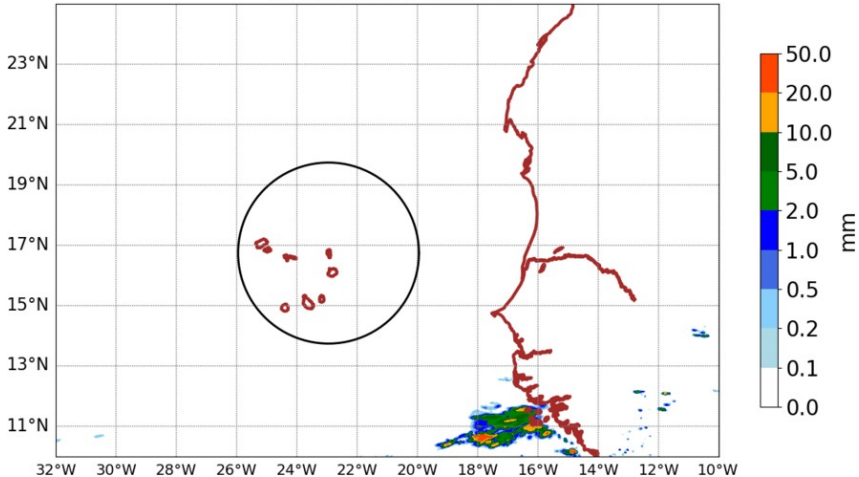
AROME25 20240622-12-UTC -ech(12h)
RR cumulated over 6h



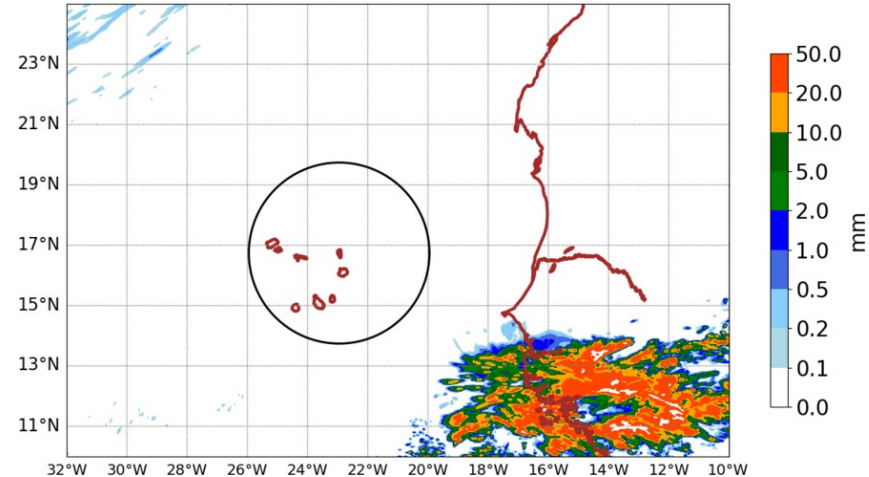
AROME25 20240623-12-UTC -ech(36h)
RR cumulated over 24h



AROME25 20240622-15-UTC -ech(15h)
RR cumulated over 6h

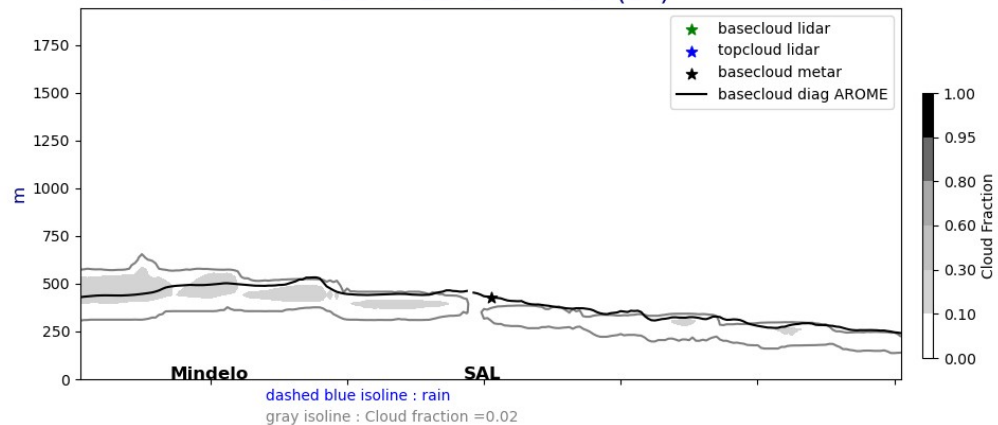


AROME25 20240624-12-UTC -ech(60h)
RR cumulated over 24h

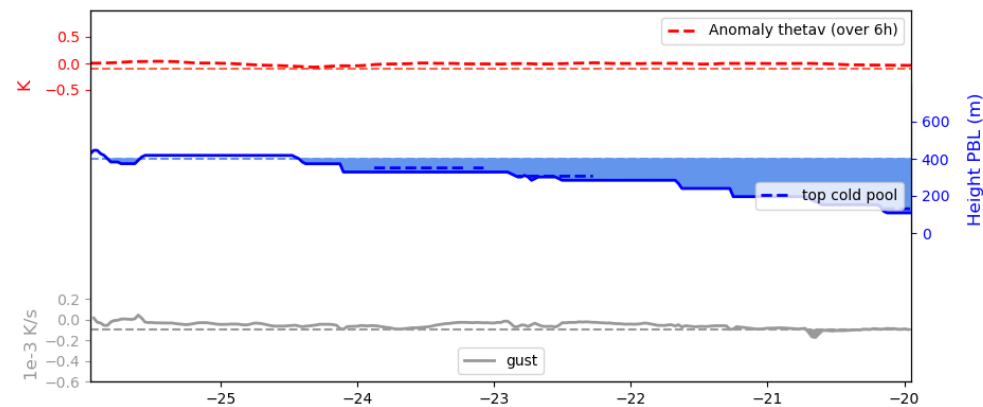
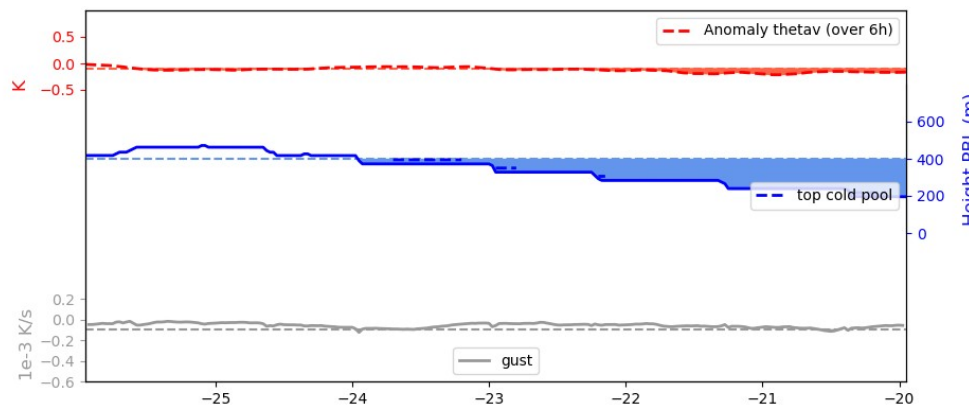
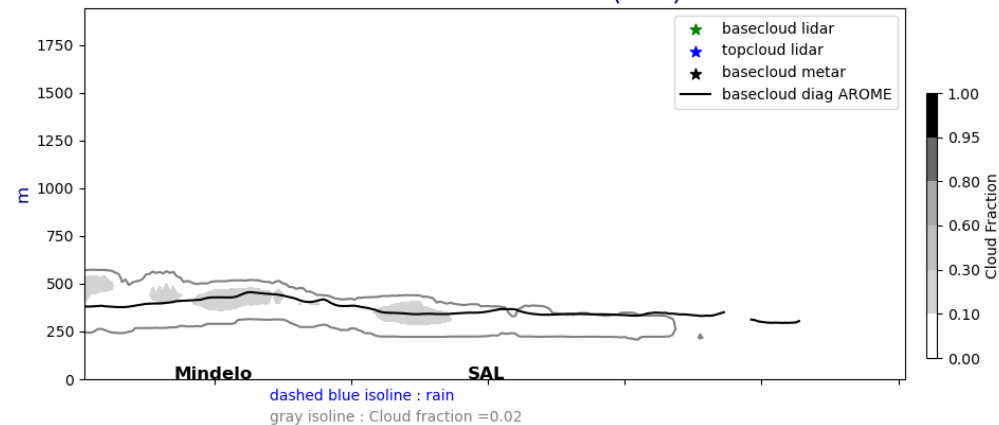


Lat. cross section @17°5N fct : 01UTC, 12UTC

Cross section E/W @ 17.5N
20240622-01-UTC ech(1h)

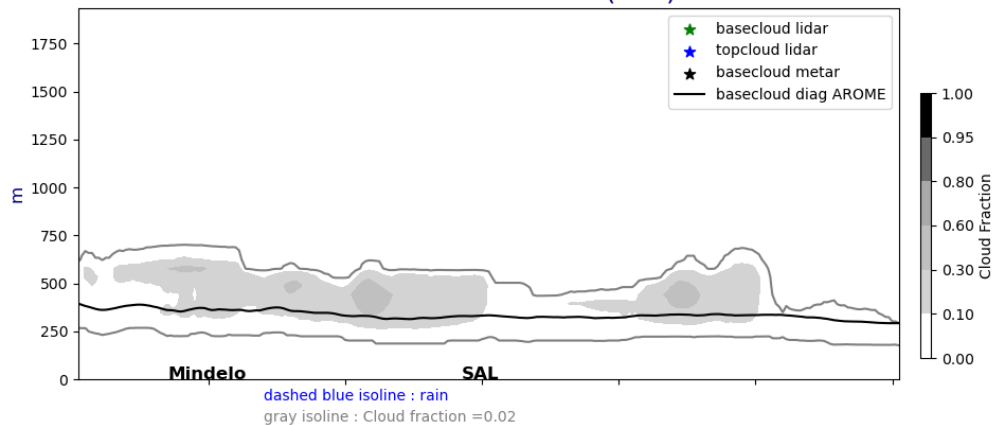


Cross section E/W @ 17.5N
20240622-12-UTC ech(12h)

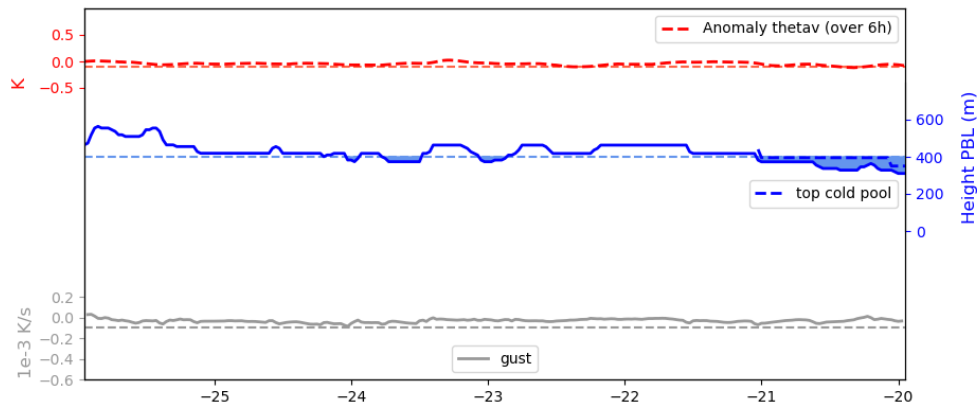
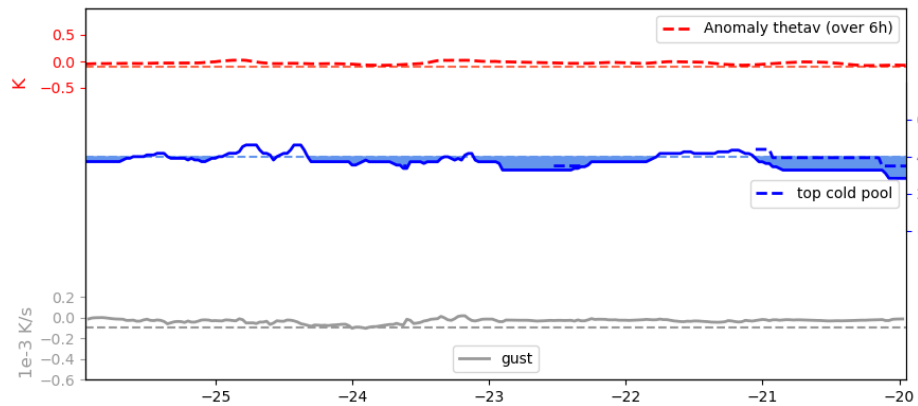
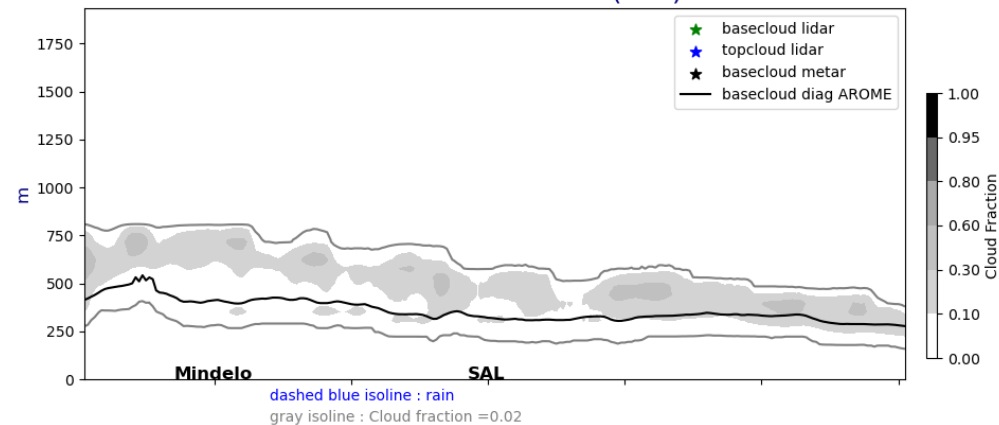


Lat. cross section @17°5N fct : J+1 and J+2 @ 12UTC

Cross section E/W @ 17.5N
20240623-12-UTC ech(36h)

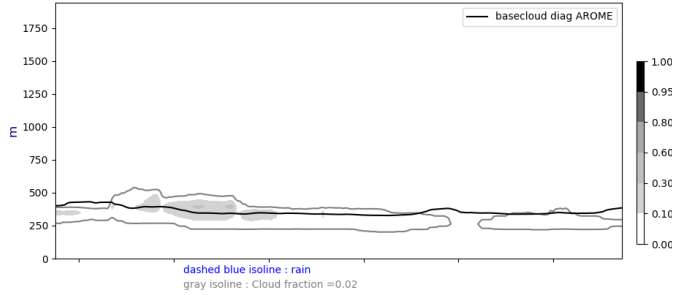


Cross section E/W @ 17.5N
20240624-12-UTC ech(60h)

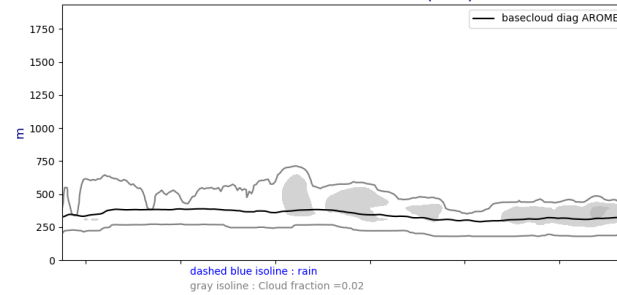


Lon. cross section @22W fct : J,J+1, J+2 @ 12 UTC

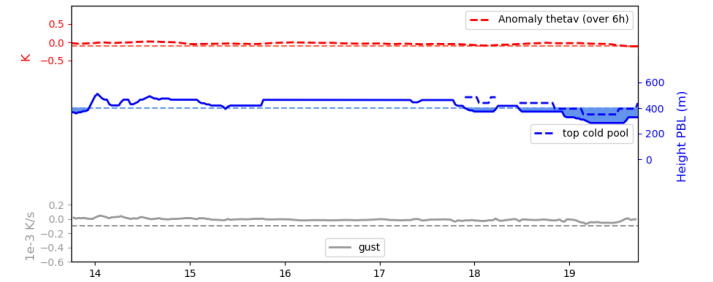
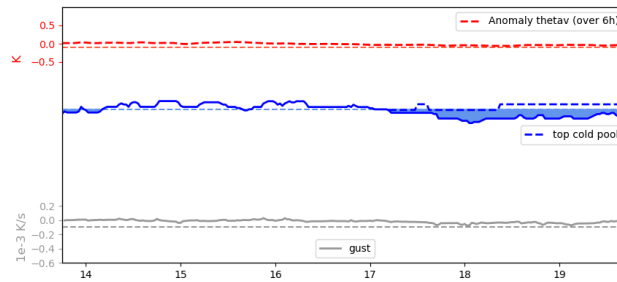
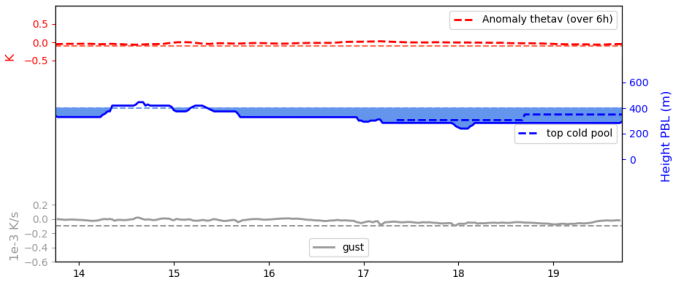
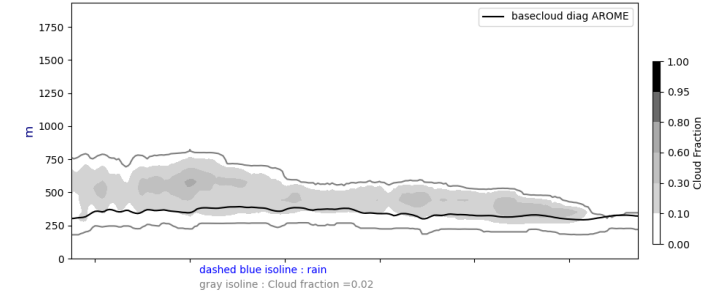
Cross section S/N @ -22W
20240622-12-UTC ech(12h)



Cross section S/N @ -22W
20240623-12-UTC ech(36h)

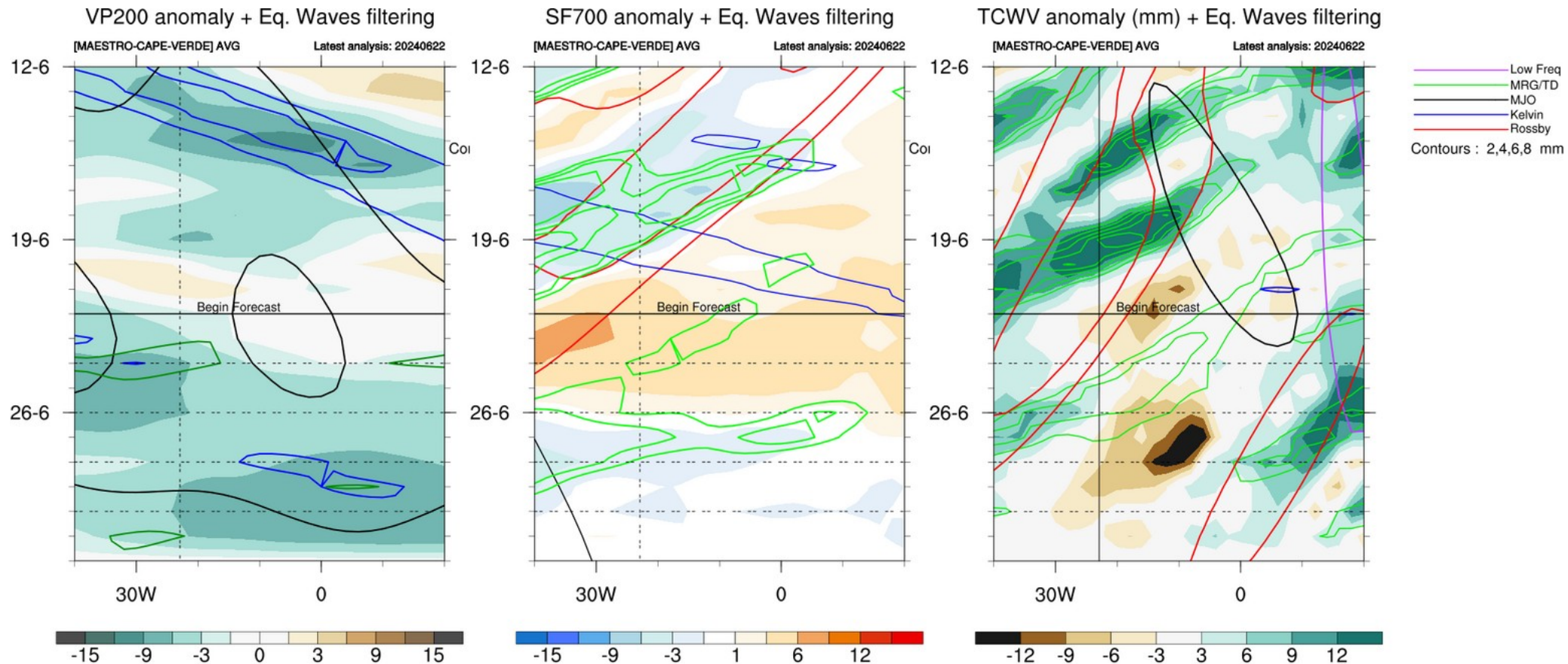


Cross section S/N @ -22W
20240624-12-UTC ech(60h)

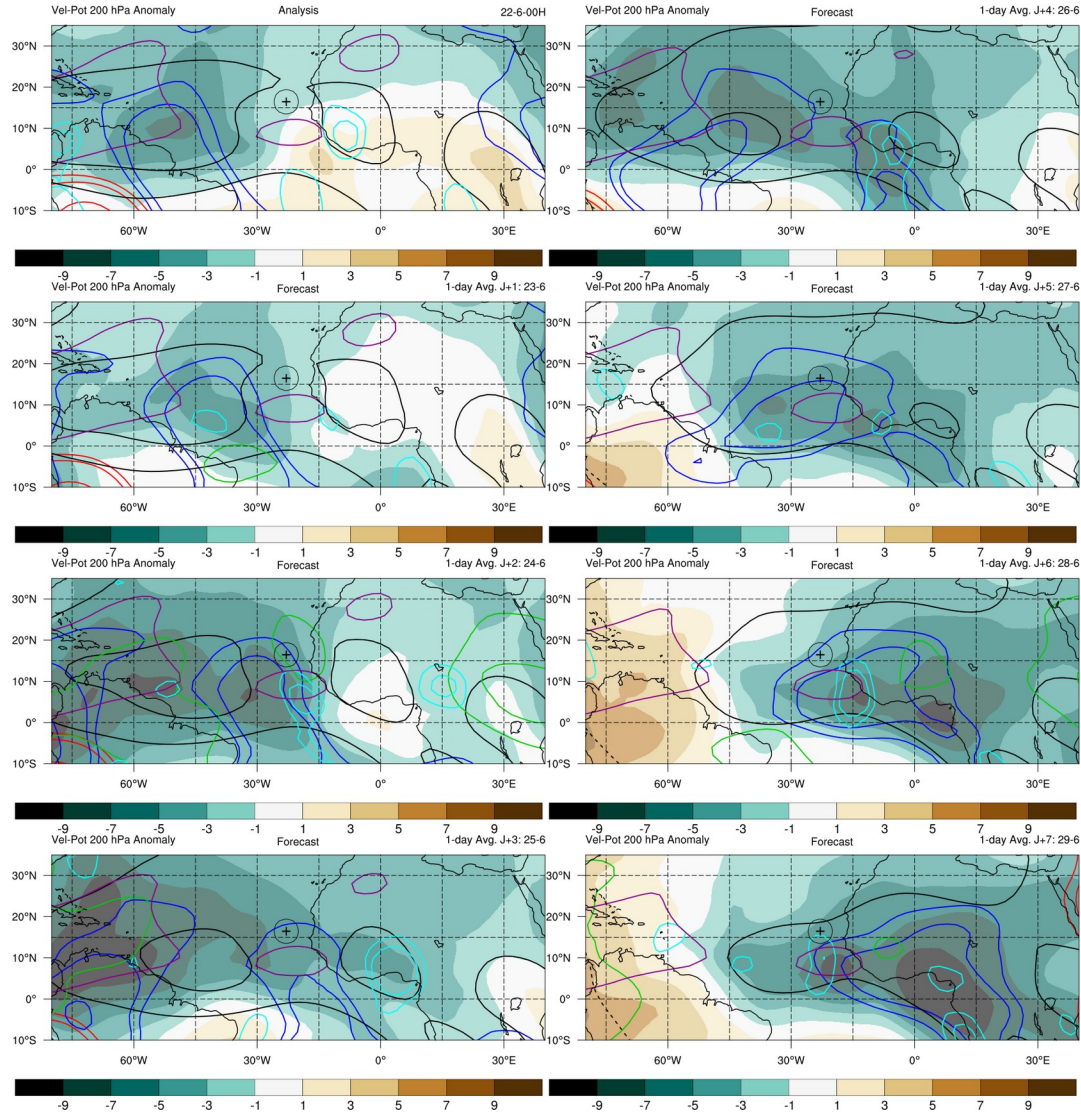


Week forecast J - J+7

Equatorial Waves filtering hovmollers

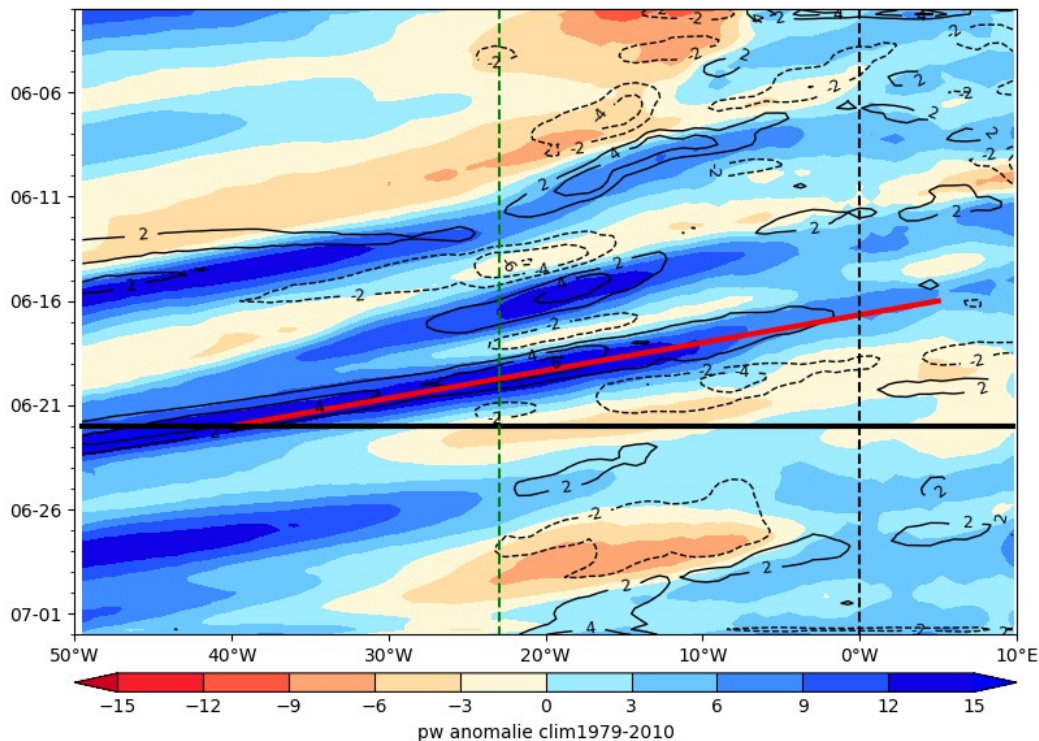


Waves : Velocity potential @ 200 hPa, day J to J+7

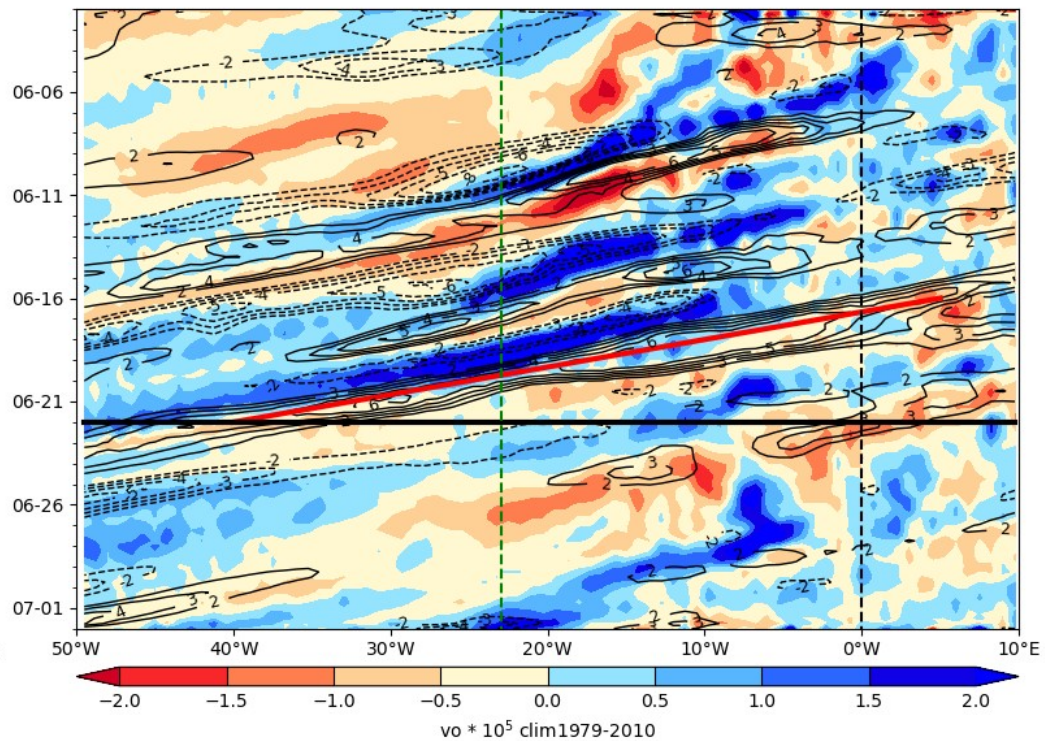


Hovmoller anomaly

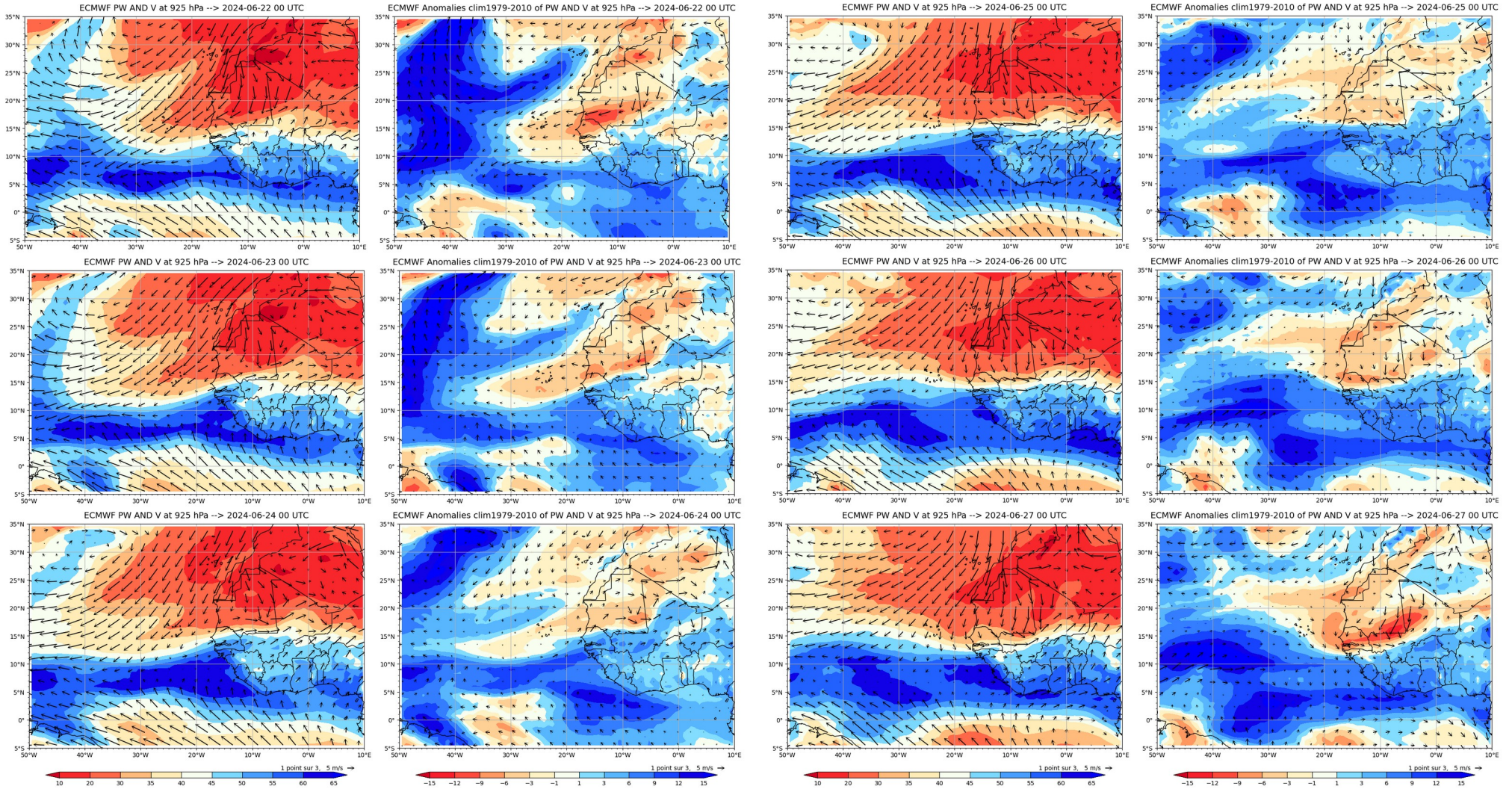
ECMWF PW (color) AND V at 925 hPa 2024-06-22



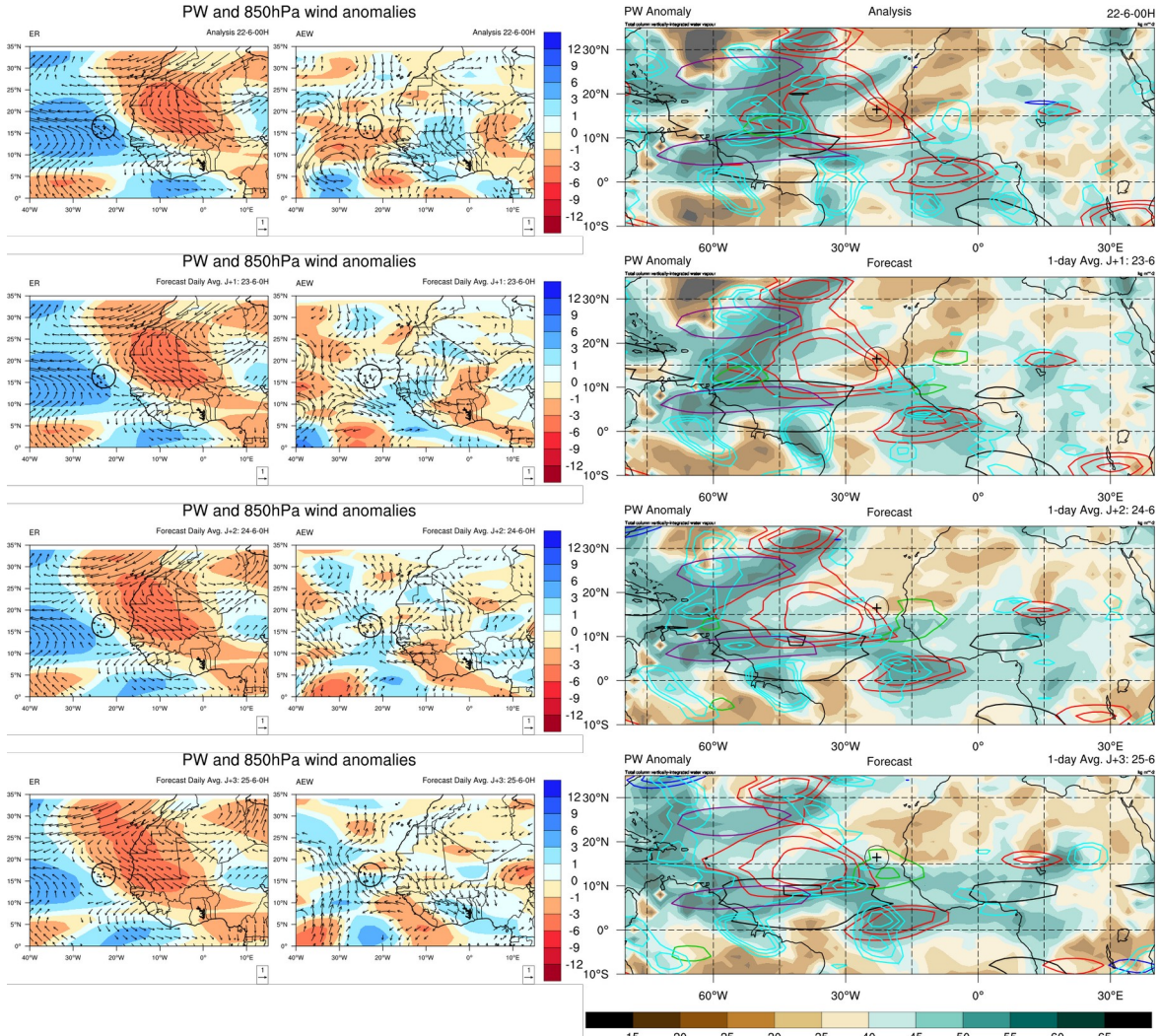
ECMWF Vorticity 850 hPa (color), V-700 hPa 2024-06-22



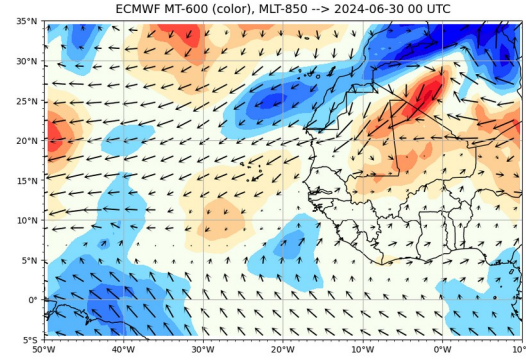
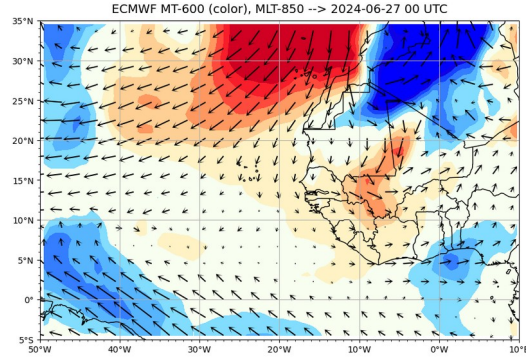
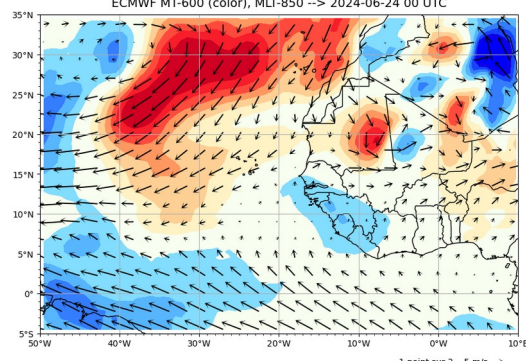
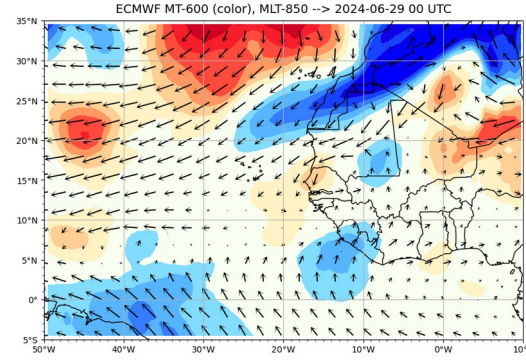
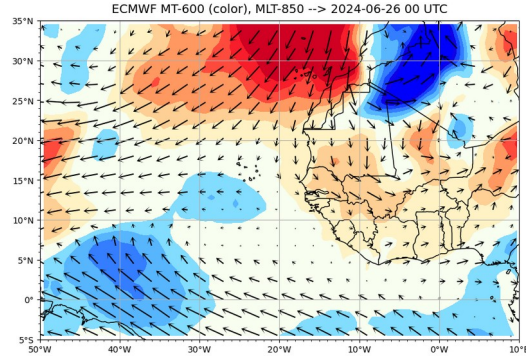
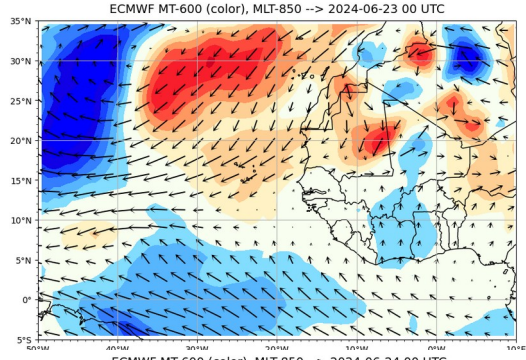
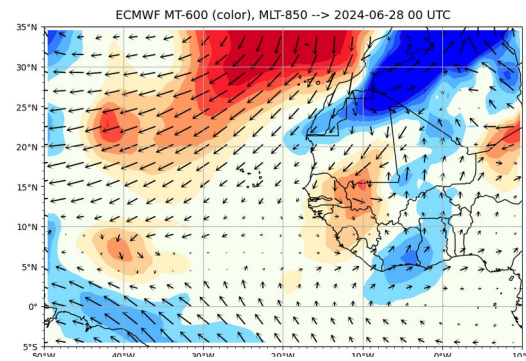
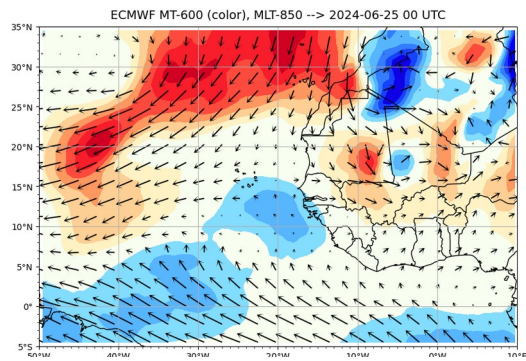
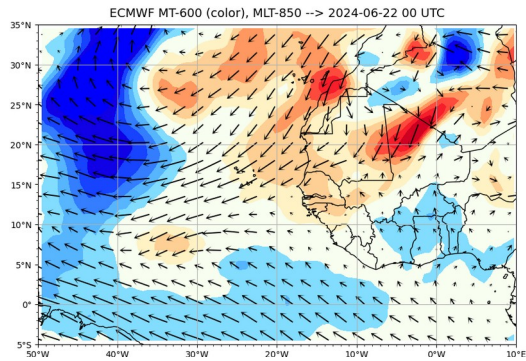
Daily PW and wind @ 925 hPa – total and anomalies

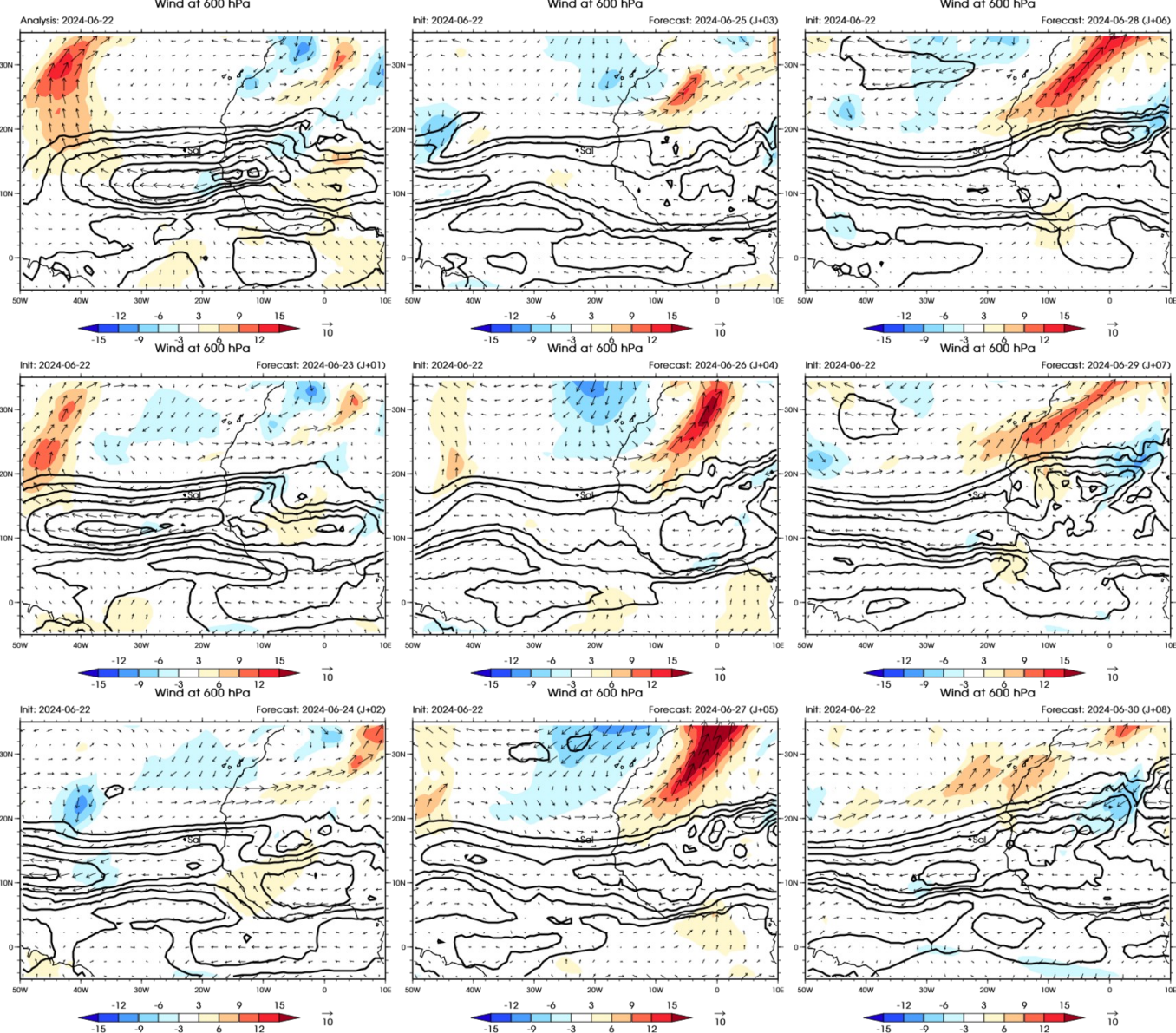


Decomposition PW/Wind and Waves contours



Monsoon Flow



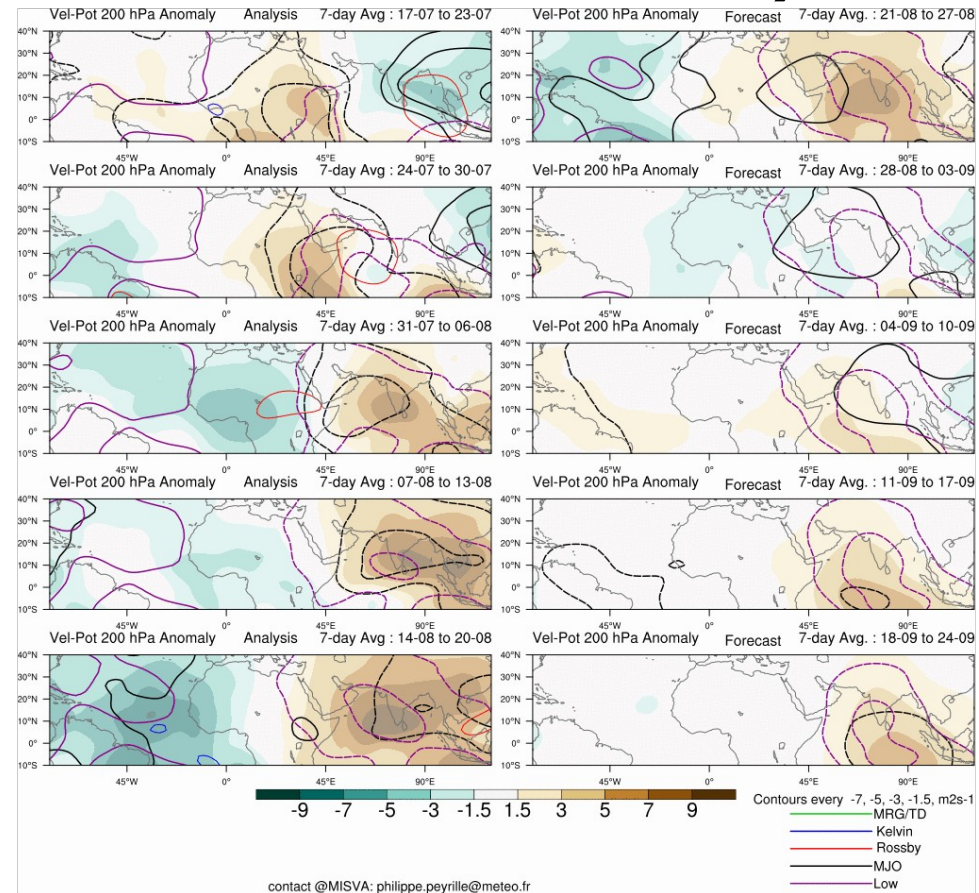
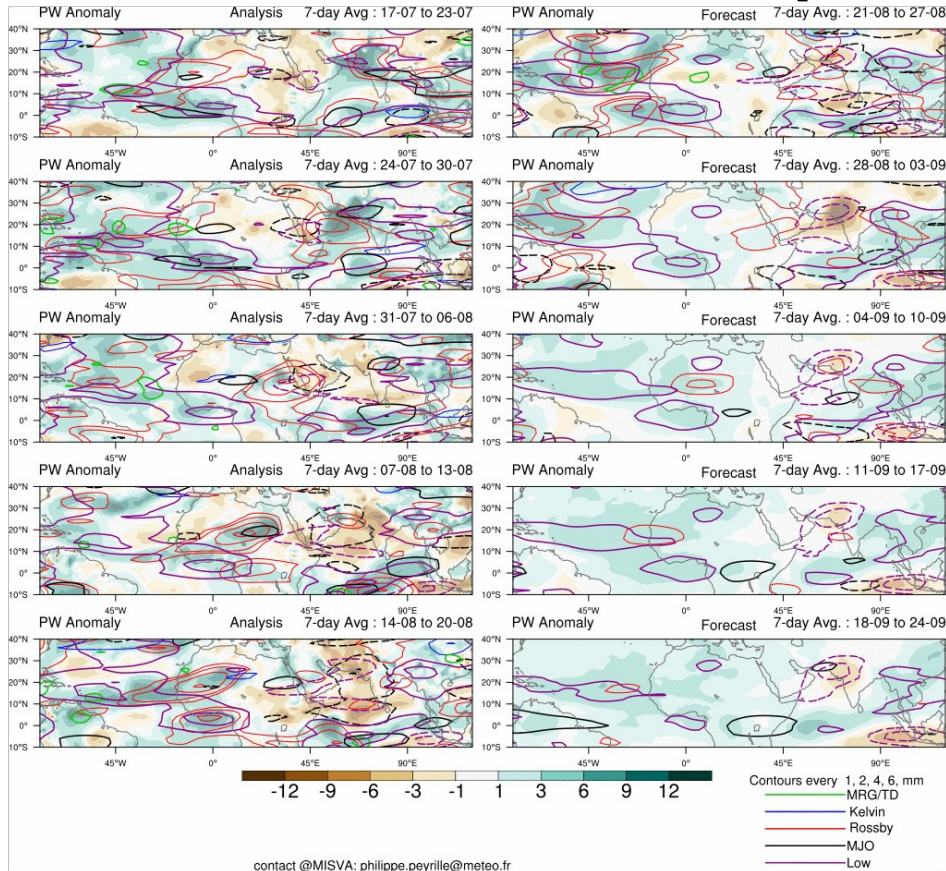


African Easterly Jet wind 600 hPa

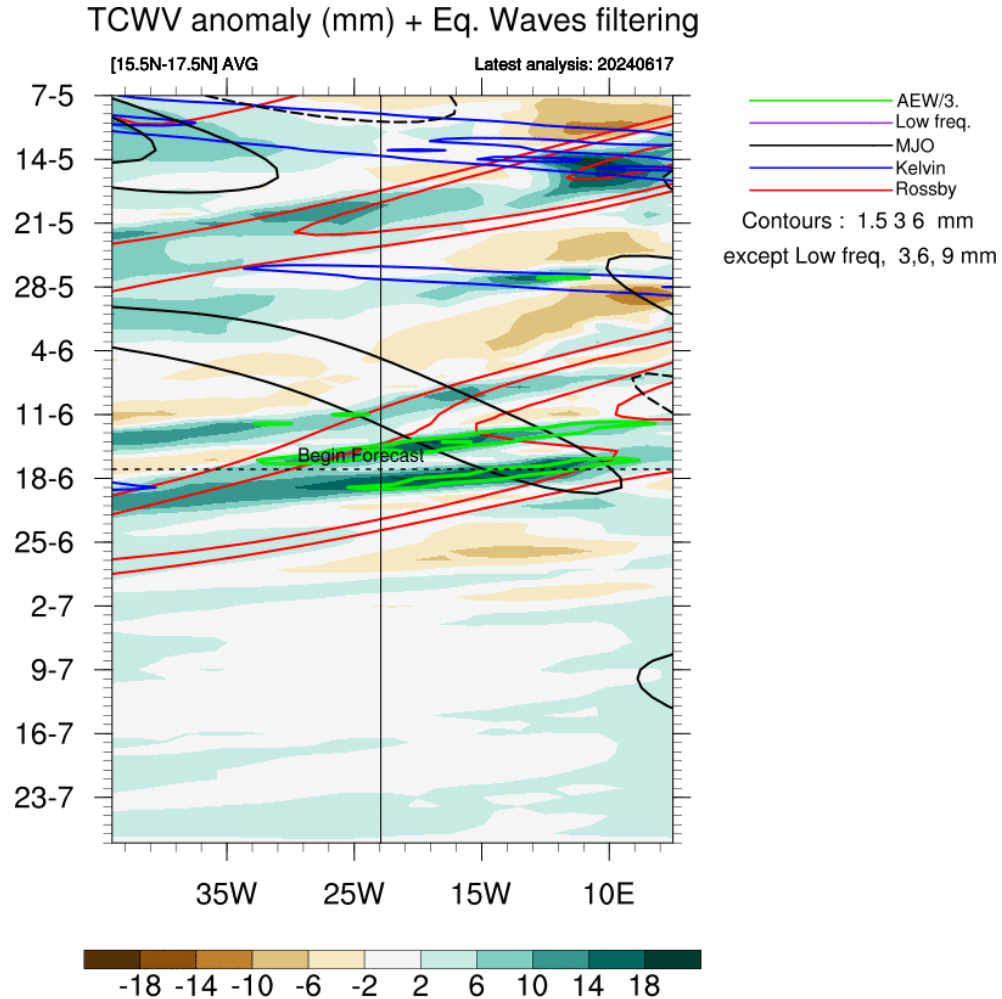
Subseasonal forecast
(updated once a week)

4 weeks forecast

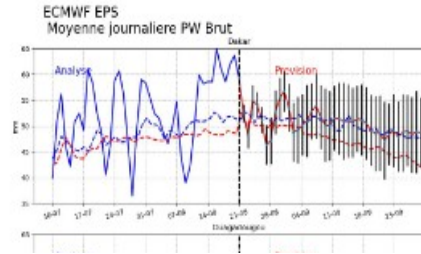
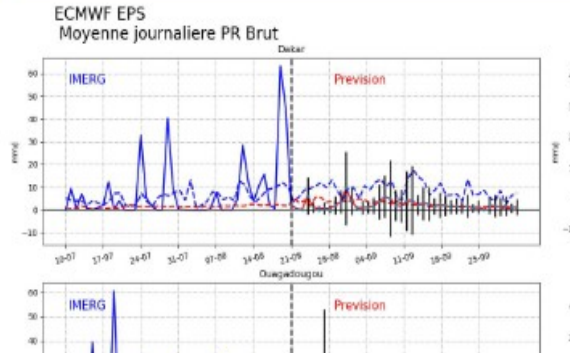
PW et VP200 (à zoomer sur SAL)



Hovmoller forecast PW over 4 weeks

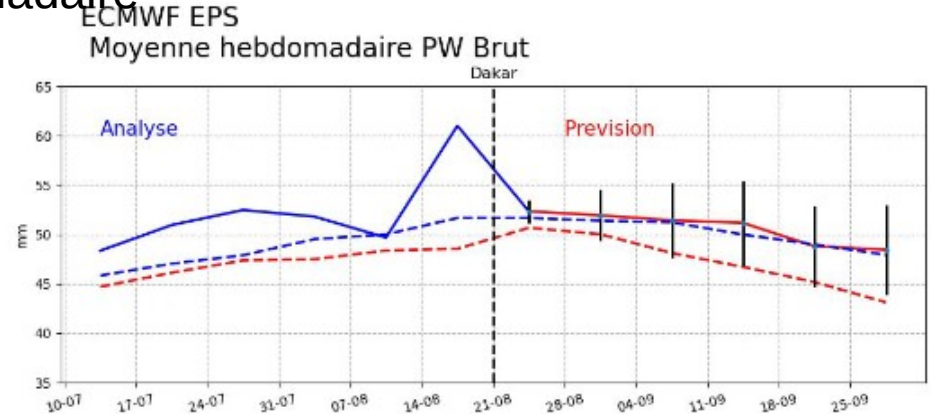
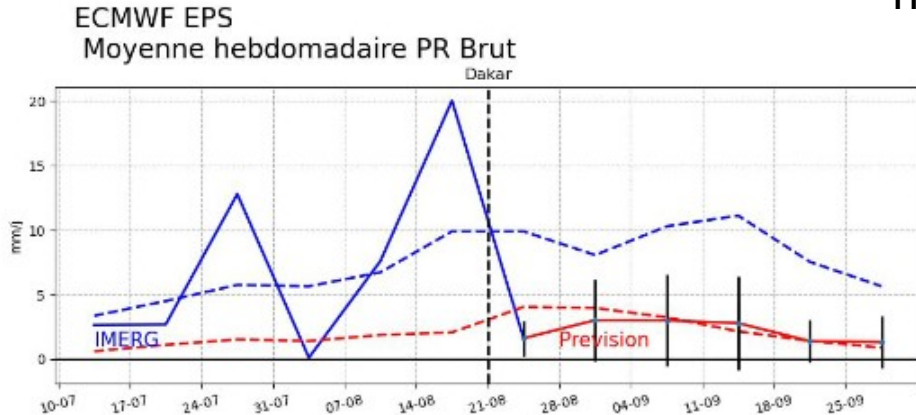


Temporal evolution PW, PR centrer sur SAL (+ EKE)



journalier

hebdomadaire



Summary

Param	J	J+1	J+2	J+3	J+4	J+5	Wave
PW/ PW*							
VP200							
VV 500							
vorticity							
Wind @ 700 hPa (m/s)							
PBL height (m)							
Base cloud (m)							
Orga cloud							

