

DRAFT SUMMARY MAESTRO

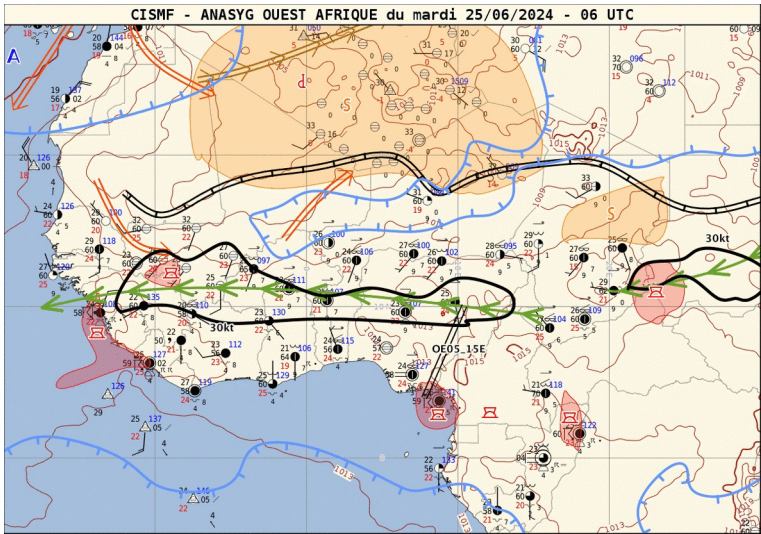
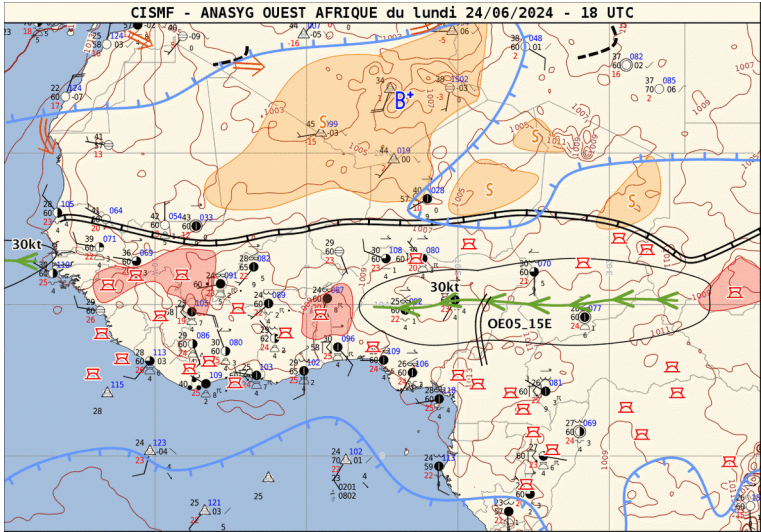
Four parts :

- evaluation J-1
- short term forecast J-J+36h
- week forecast J-J+7
- subseasonal forecast (a few weeks) : updated once a week

Evaluation Day-1

- West Africa ANASYG + satellite image (feedback to improve our experience)
- DIRAG ANASYG
- Precipitable Water, Meridional Transport J-1
- Carte PW + FFT waves J-1

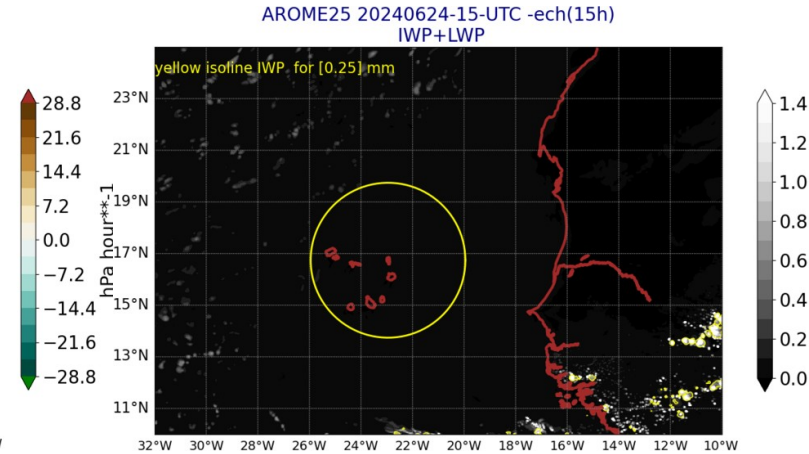
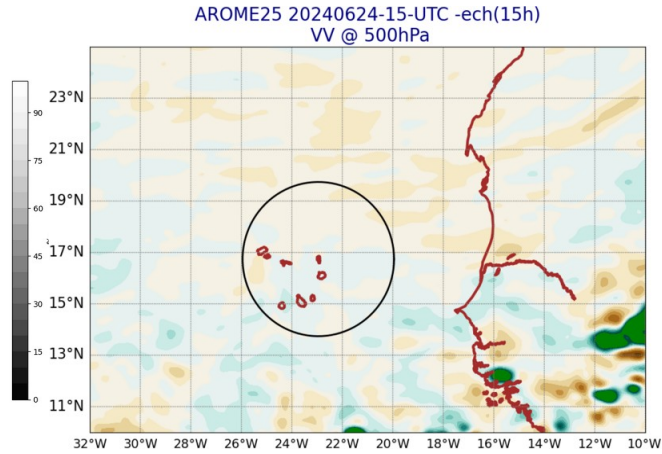
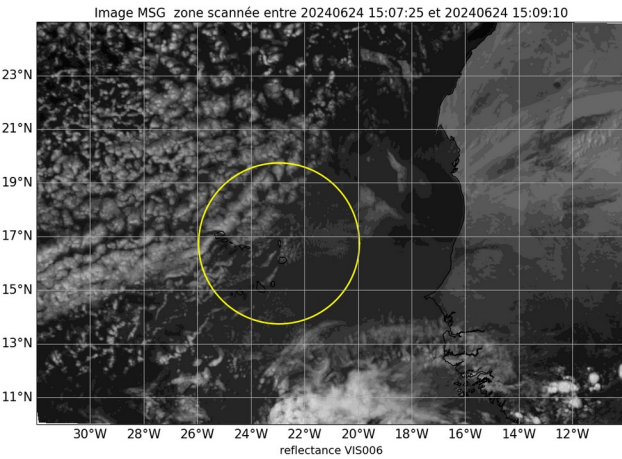
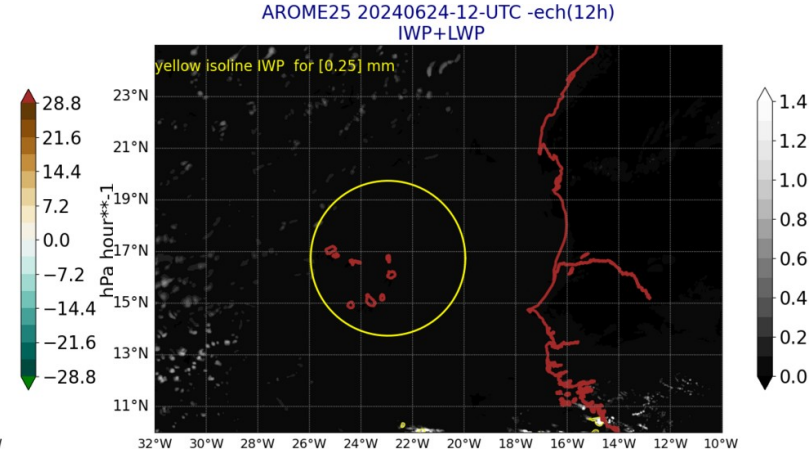
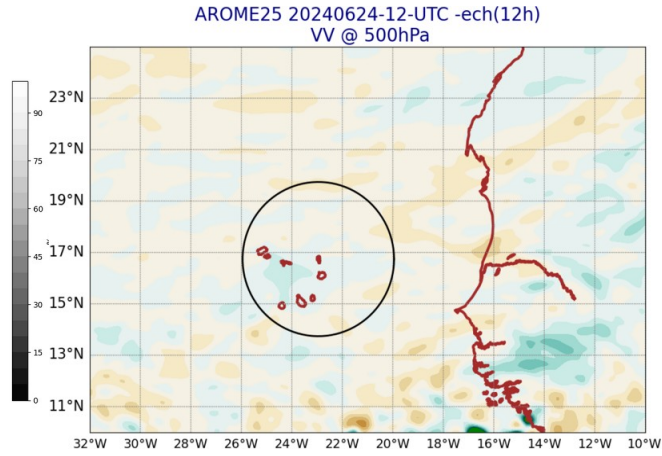
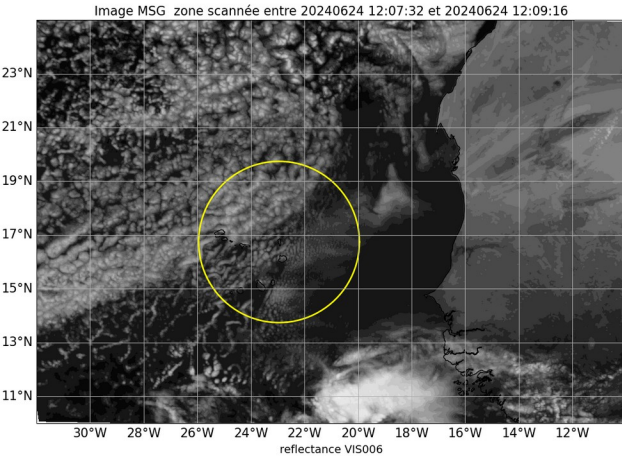
Anasyg J-1 18UTC et J 06UTC



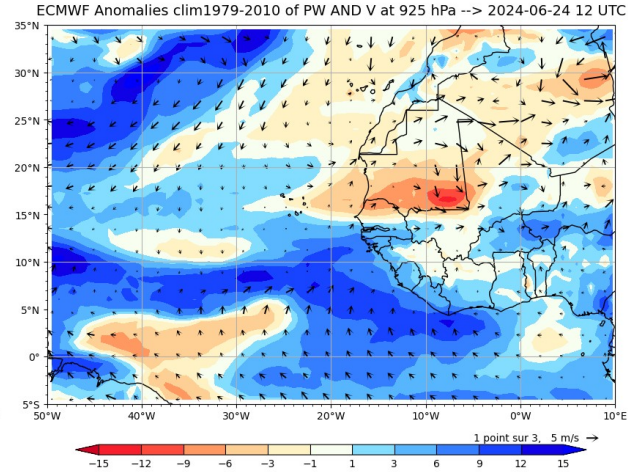
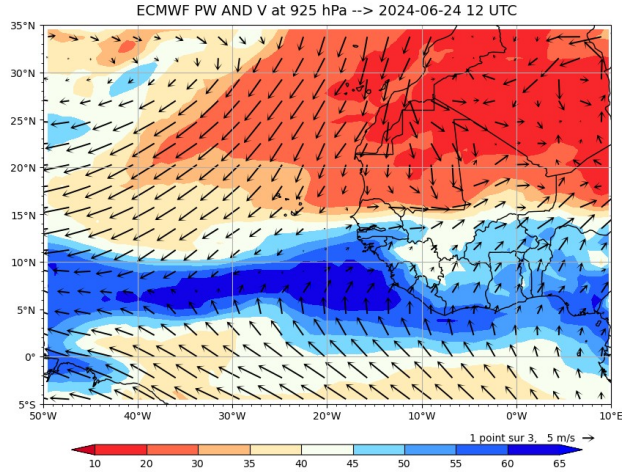
- + anasyg dirag

Image MSG Visible J-1 12 and 15 UTC

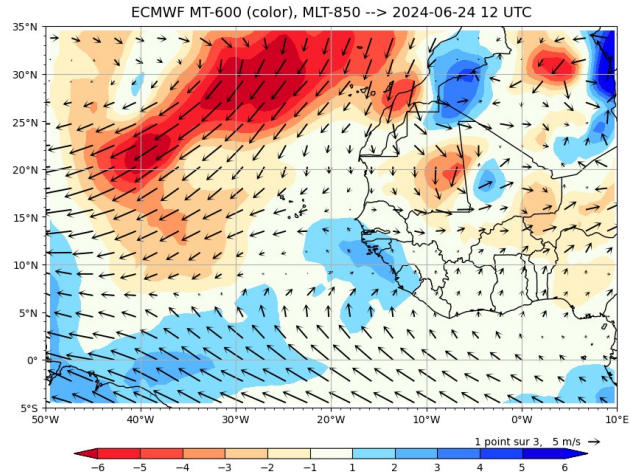
Arome J-1 12 and 15 UTC



Precipitable Water - Merid. Transport - Waves J-1



Ajouter ondes J-1

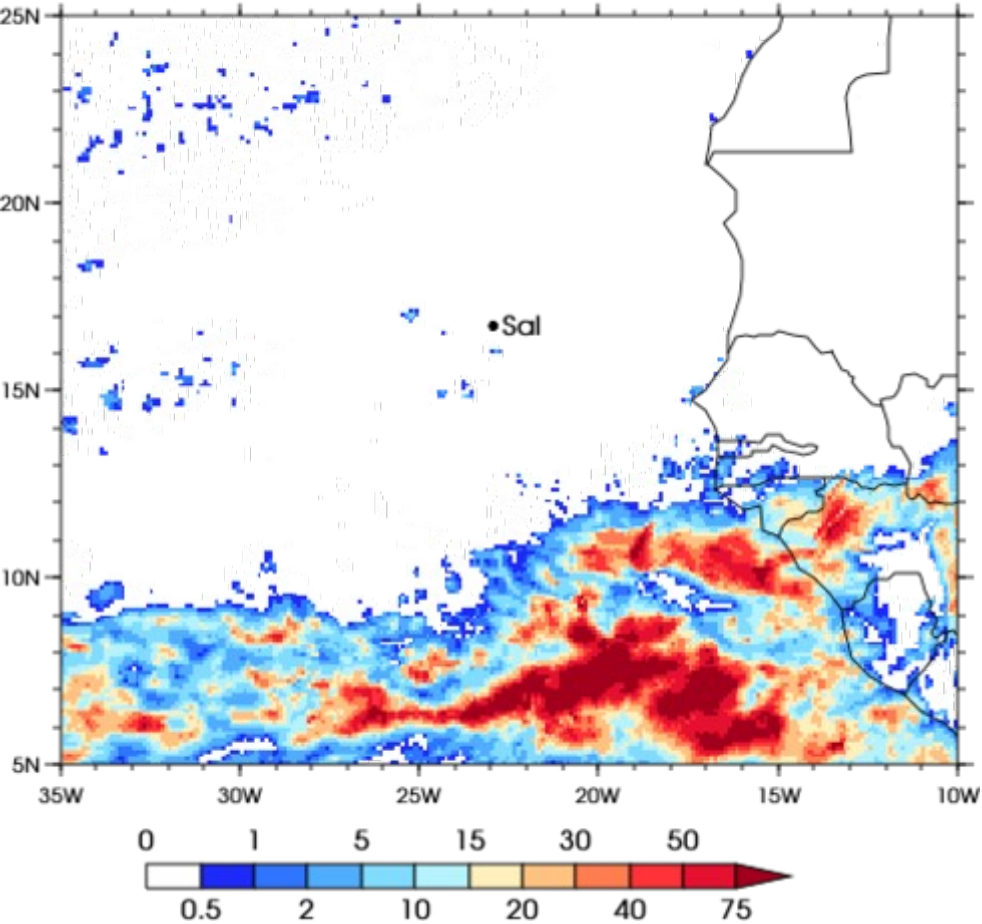


Precipitation IMERG and AROME J-1

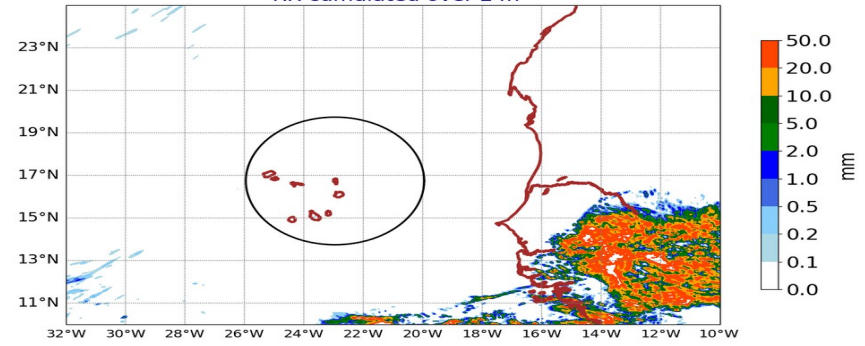
3IMERGHHE GPM IMERG Early Precipitation

Daily accumulated: 2024-06-24

Units: mm/day

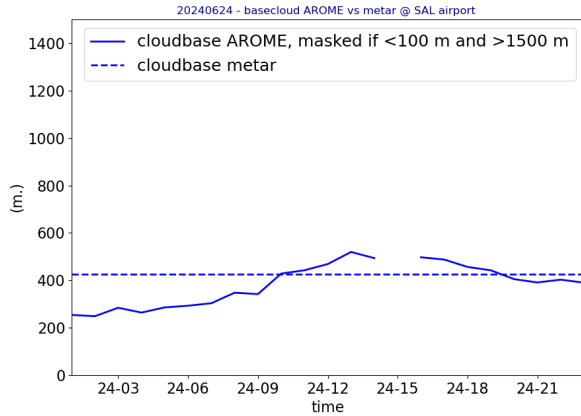
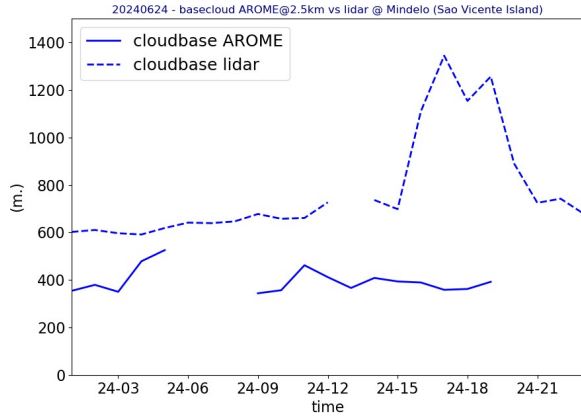


AROME25 20240625-00-UTC -ech(24h)
RR cumulated over 24h

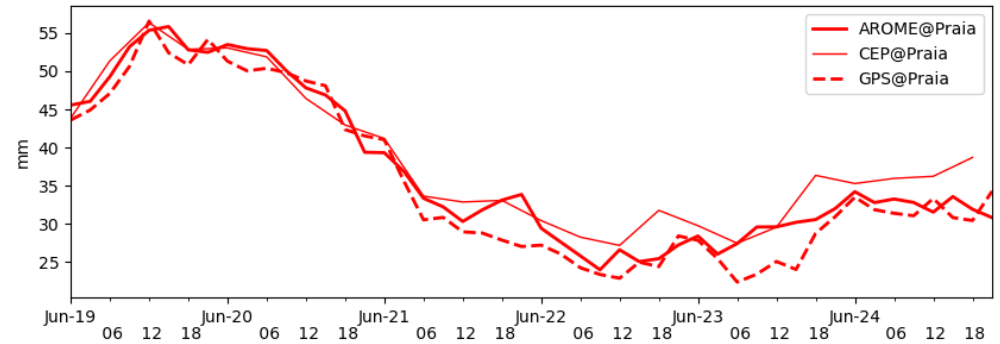
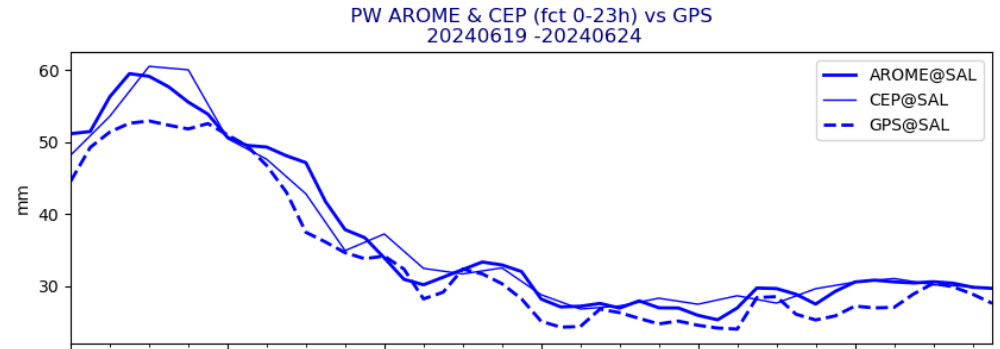


OBSERVATIONS J-1

Lidar@ mindelo
metar@sal

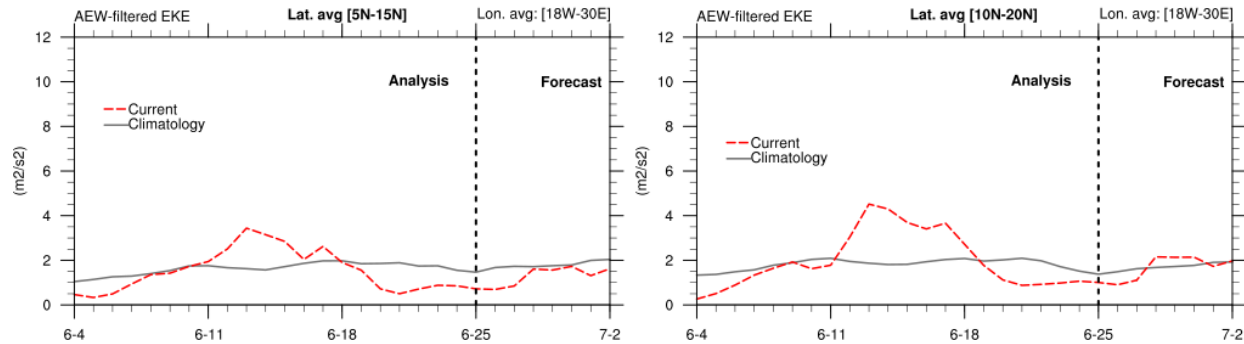
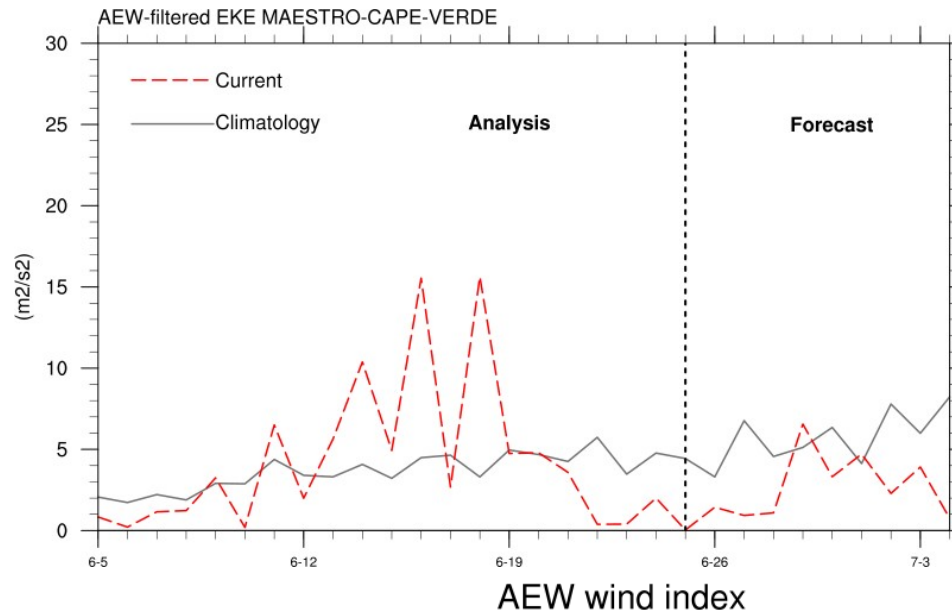
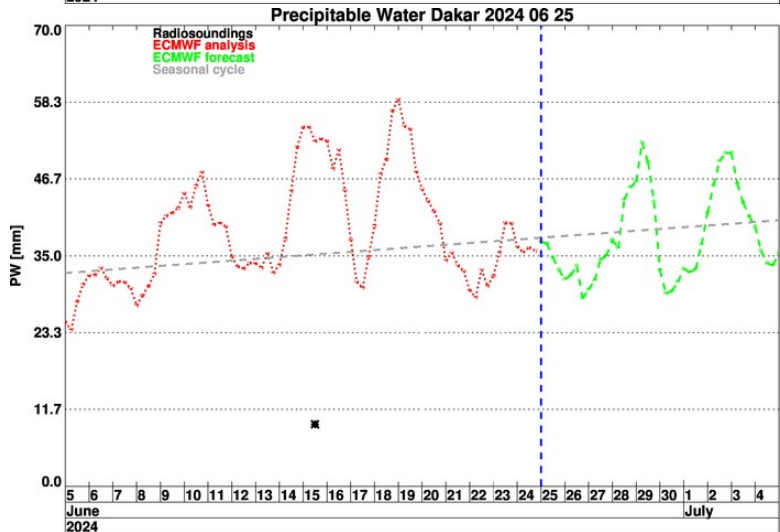
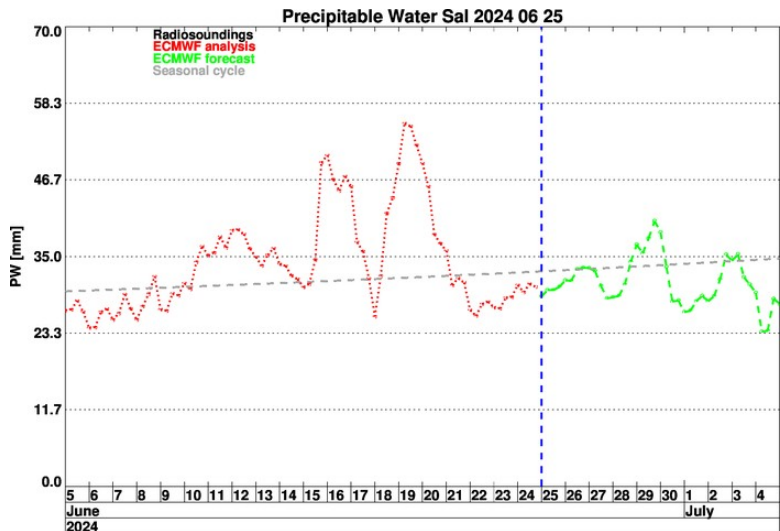


GPS @ Sal
GPS @ Praia



Short term forecast J- J+36h

Temporal evolution PW Sal et Dakar + EKE



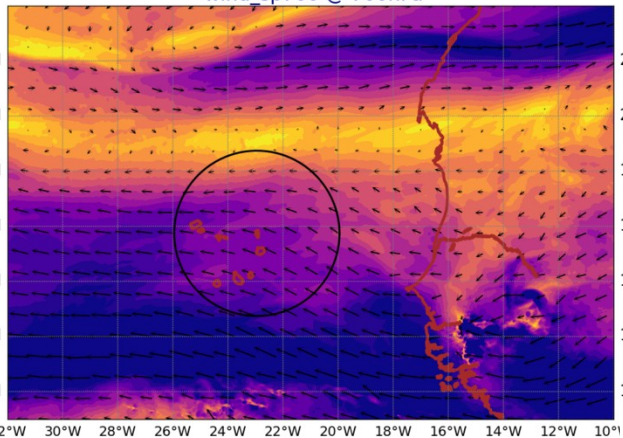
FIGURES AROME

- PW J-J+36h 850 hPa ?
- Pbl height
- Avoir une coupe zonale / meridienne de qv ?

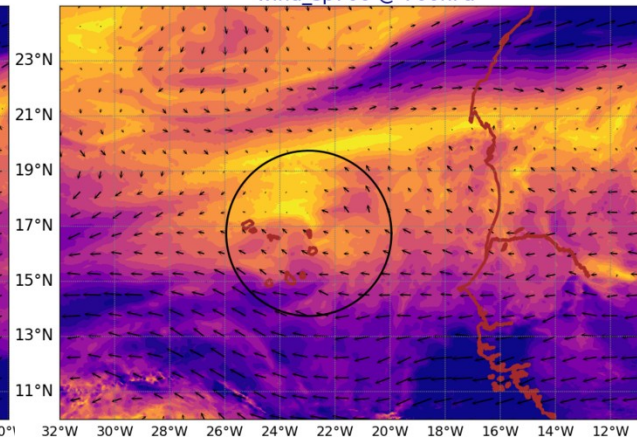
AROME Wind @ 700 hPa

AROME Wind @ 920 hPa

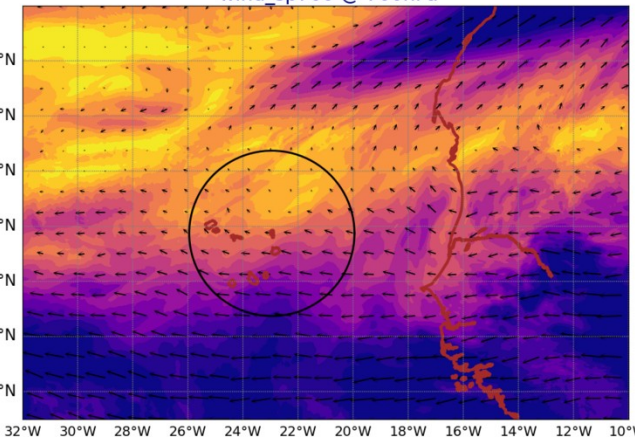
AROME25 20240625-12-UTC -ech(12h)
wind_sp700 @ 700hPa



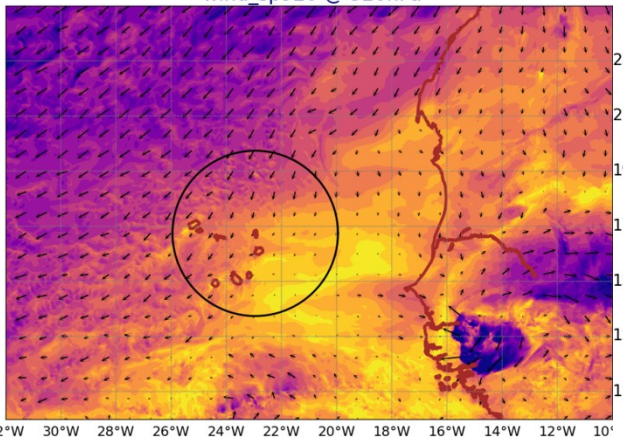
AROME25 20240626-12-UTC -ech(36h)
wind_sp700 @ 700hPa



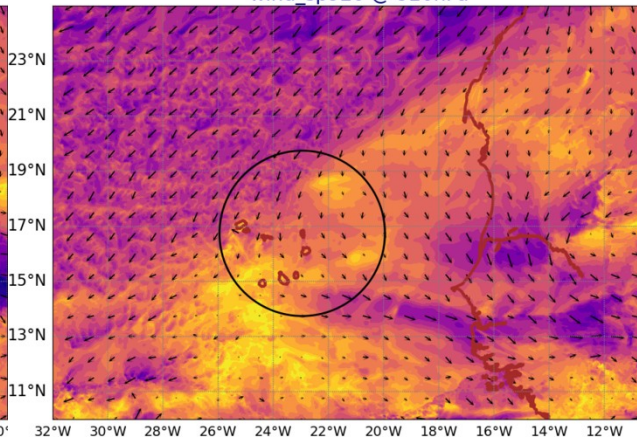
AROME25 20240627-12-UTC -ech(60h)
wind_sp700 @ 700hPa



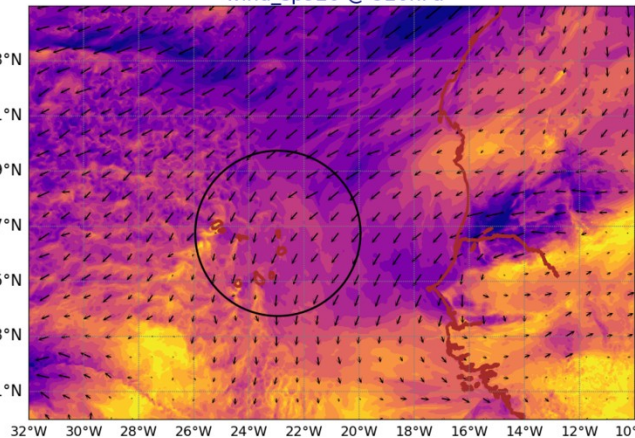
AROME25 20240625-12-UTC -ech(12h)
wind_sp920 @ 920hPa



AROME25 20240626-12-UTC -ech(36h)
wind_sp920 @ 920hPa



AROME25 20240627-12-UTC -ech(60h)
wind_sp920 @ 920hPa



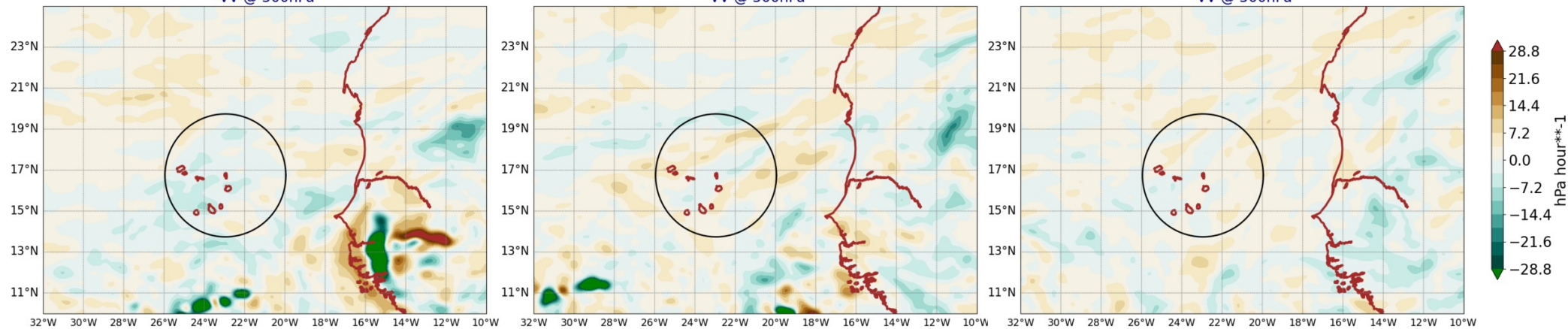
AROME VV @ 500hPa

AROME LWP+IWP

AROME25 20240625-12-UTC -ech(12h)
VV @ 500hPa

AROME25 20240626-12-UTC -ech(36h)
VV @ 500hPa

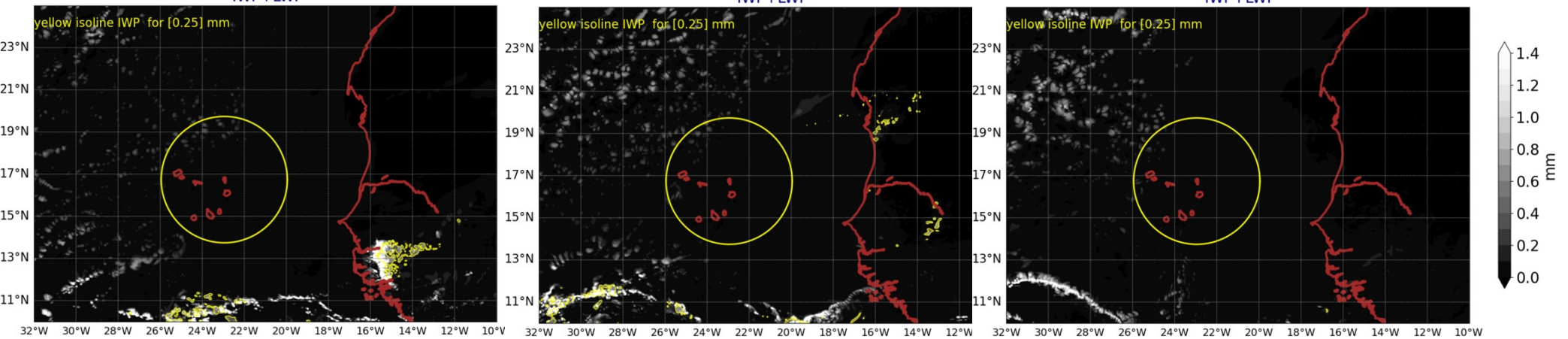
AROME25 20240627-12-UTC -ech(60h)
VV @ 500hPa



AROME25 20240625-12-UTC -ech(12h)
IWP+LWP

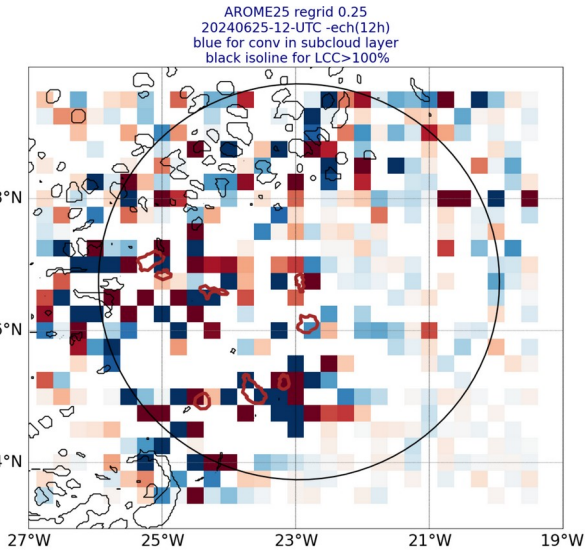
AROME25 20240626-12-UTC -ech(36h)
IWP+LWP

AROME25 20240627-12-UTC -ech(60h)
IWP+LWP

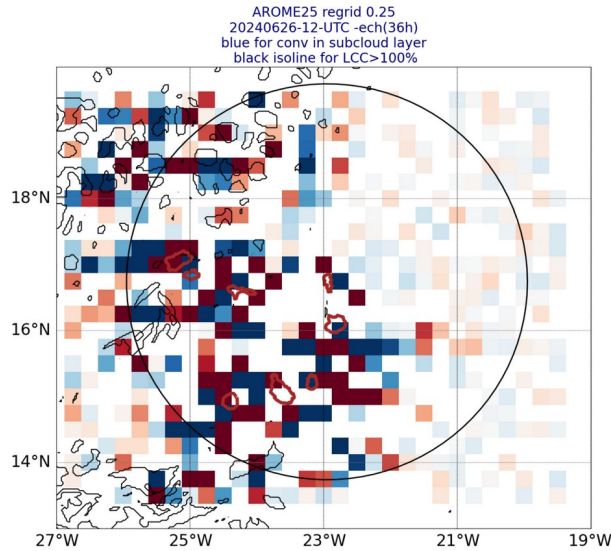


Smoc

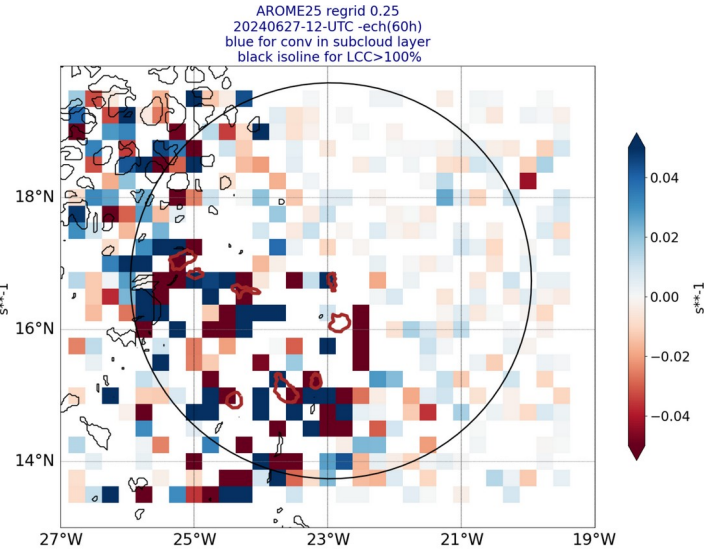
-blue for conv in subcloud layer-
dark isoline for low cloud cover



white box where subcloud and cloud layer have same sign of div



white box where subcloud and cloud layer have same sign of div



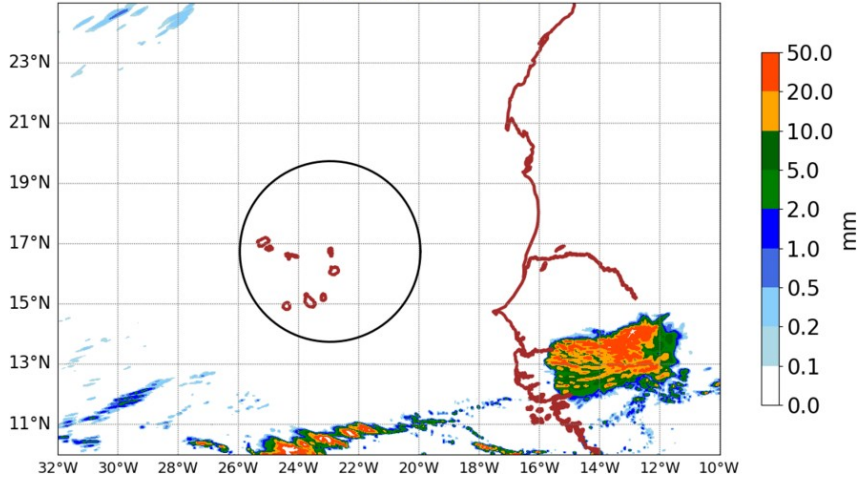
white box where subcloud and cloud layer have same sign of div

over 6h ech 12h and 15h

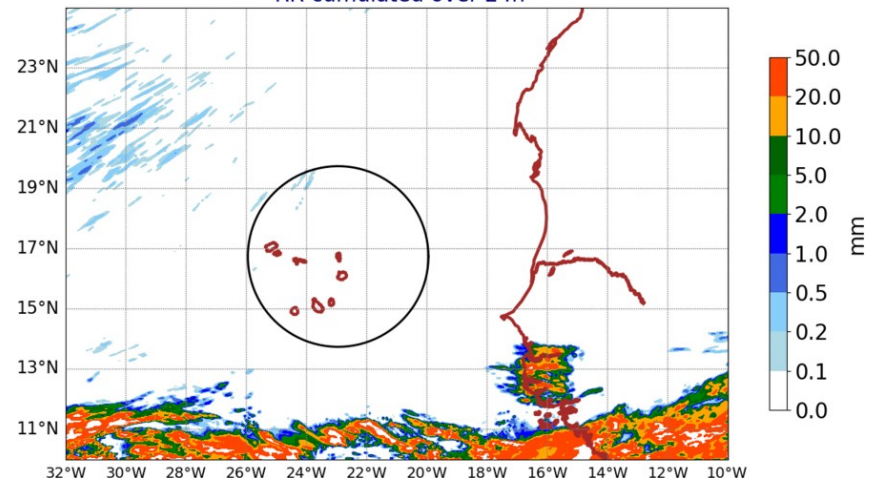
AROME precipitation

over 24h ech 36h and 60h

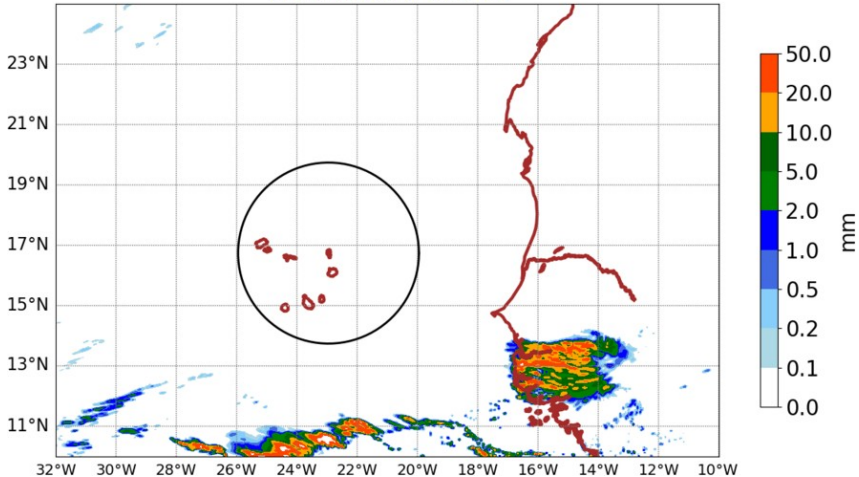
AROME25 20240625-12-UTC -ech(12h)
RR cumulated over 6h



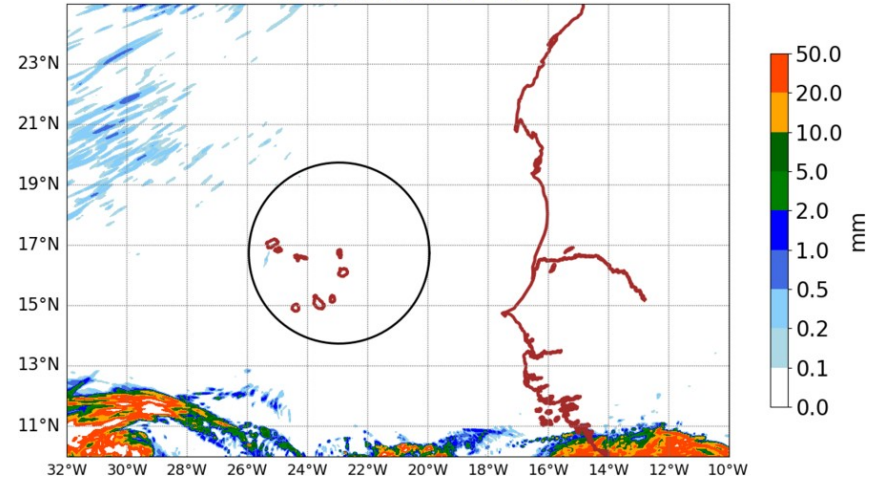
AROME25 20240626-12-UTC -ech(36h)
RR cumulated over 24h



AROME25 20240625-15-UTC -ech(15h)
RR cumulated over 6h

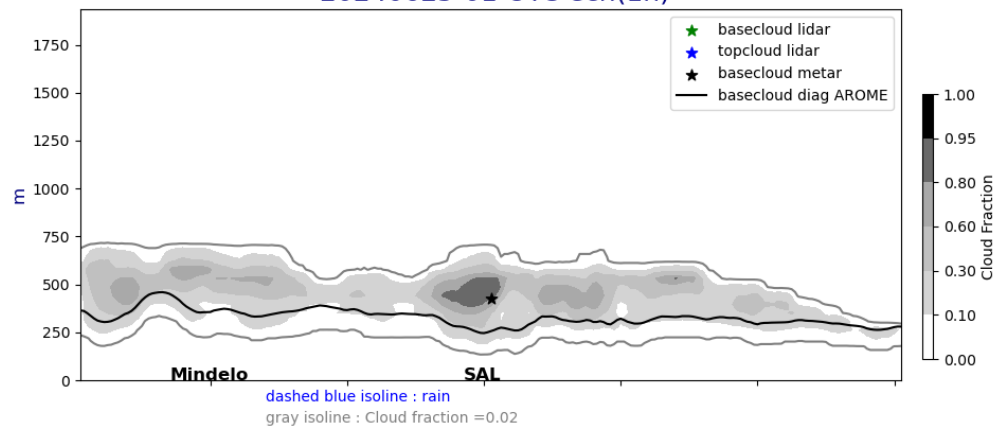


AROME25 20240627-12-UTC -ech(60h)
RR cumulated over 24h

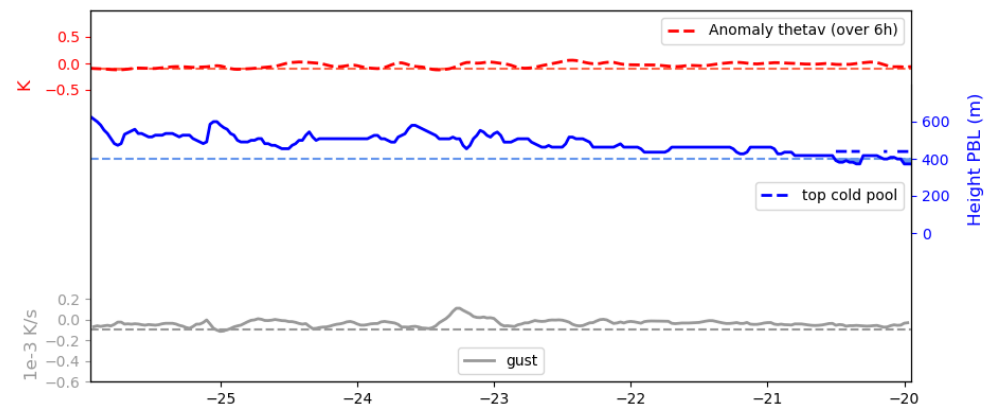
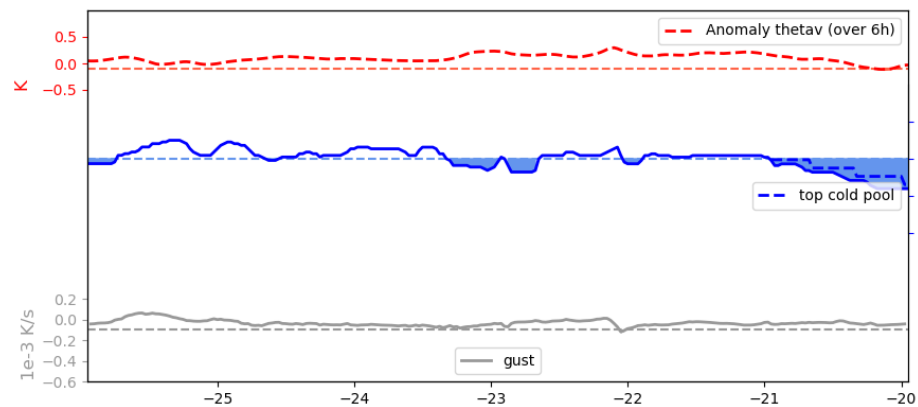
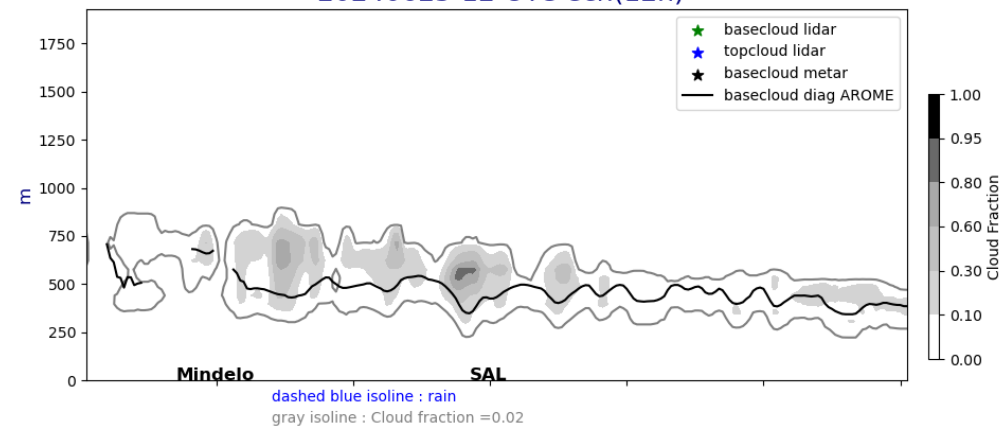


Lat. cross section @17°5N fct : 01UTC, 12UTC

Cross section E/W @ 17.5N
20240625-01-UTC ech(1h)

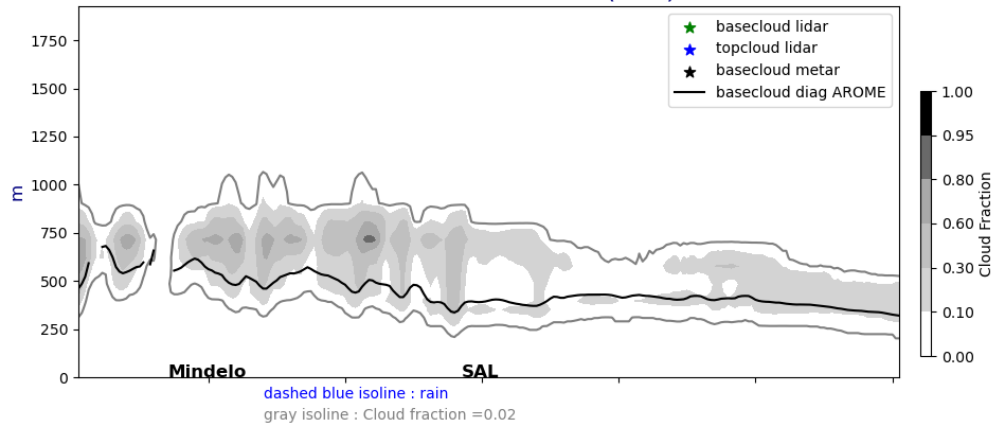


Cross section E/W @ 17.5N
20240625-12-UTC ech(12h)

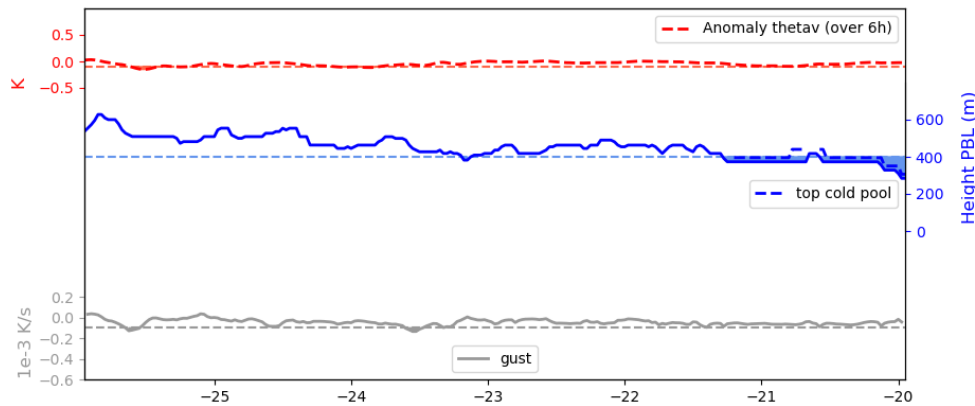
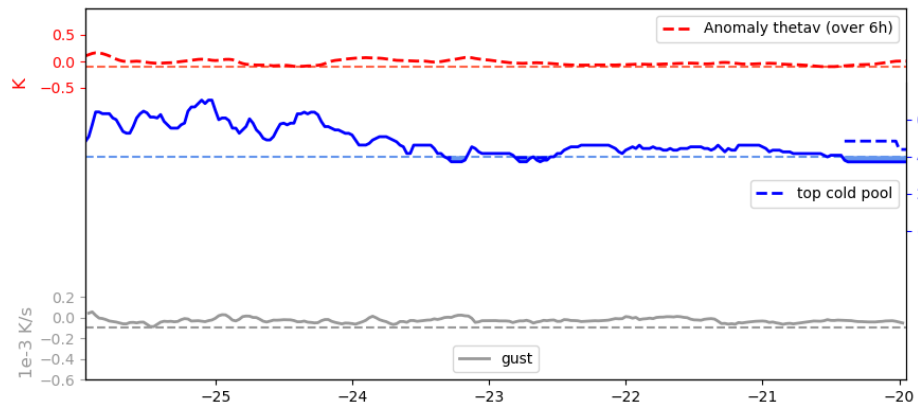
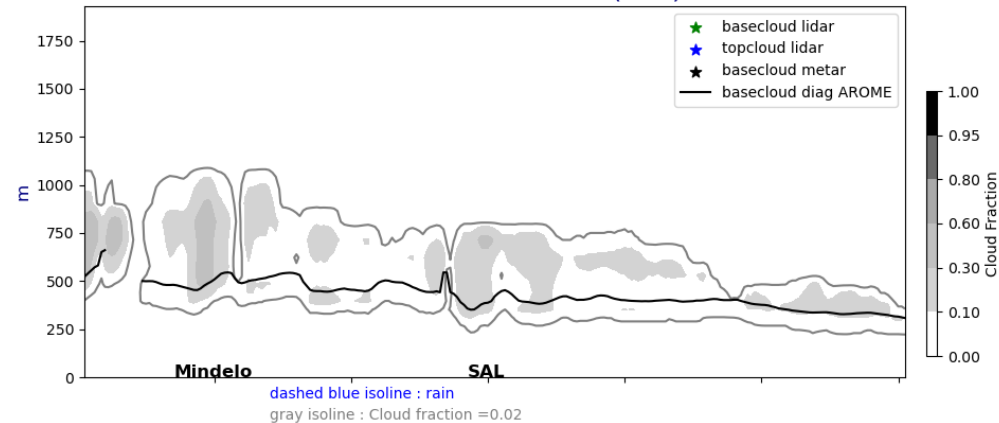


Lat. cross section @17°5N fct : J+1 and J+2 @ 12UTC

Cross section E/W @ 17.5N
20240626-12-UTC ech(36h)

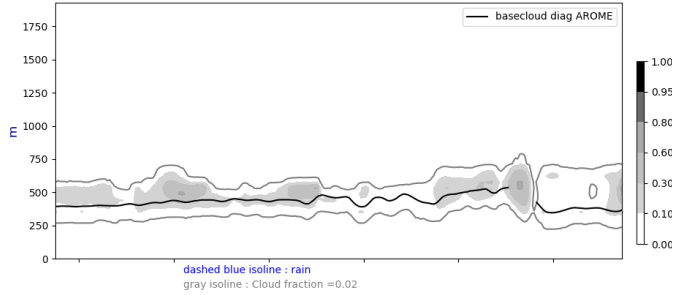


Cross section E/W @ 17.5N
20240627-12-UTC ech(60h)

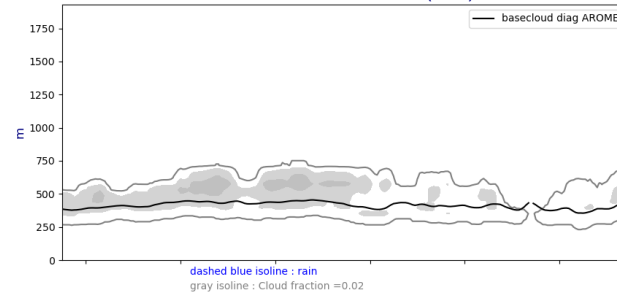


Lon. cross section @22W fct : J,J+1, J+2 @ 12 UTC

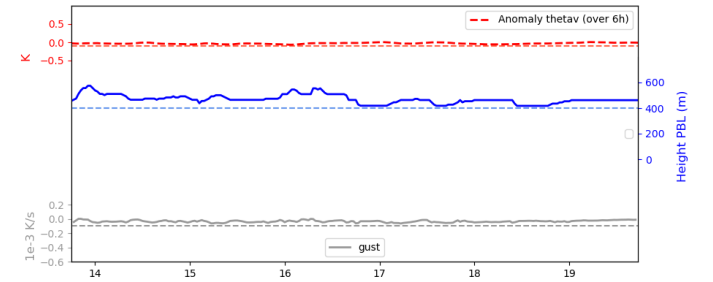
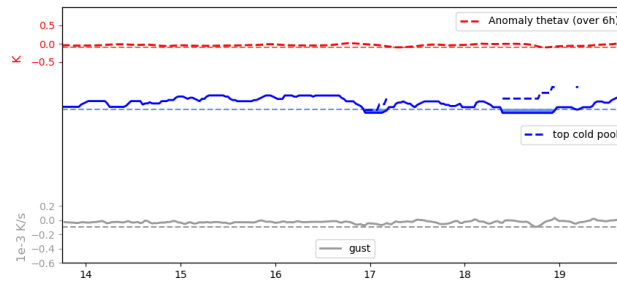
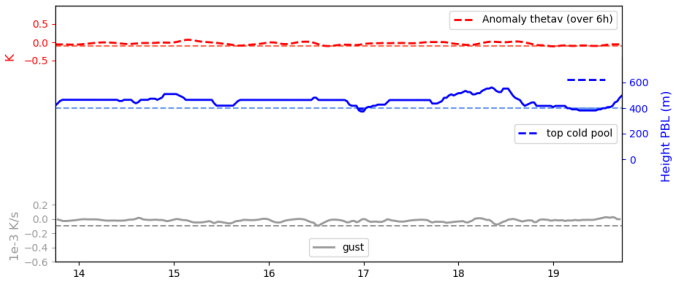
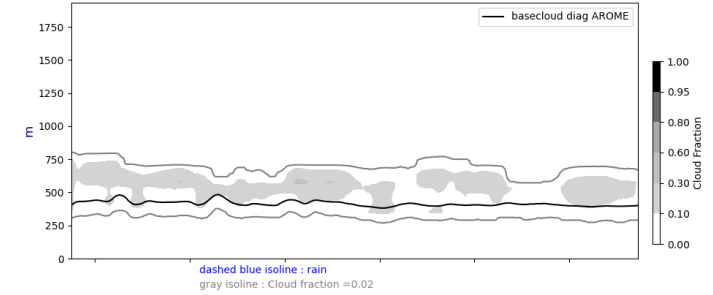
Cross section S/N @ -22W
20240625-12-UTC ech(12h)



Cross section S/N @ -22W
20240626-12-UTC ech(36h)

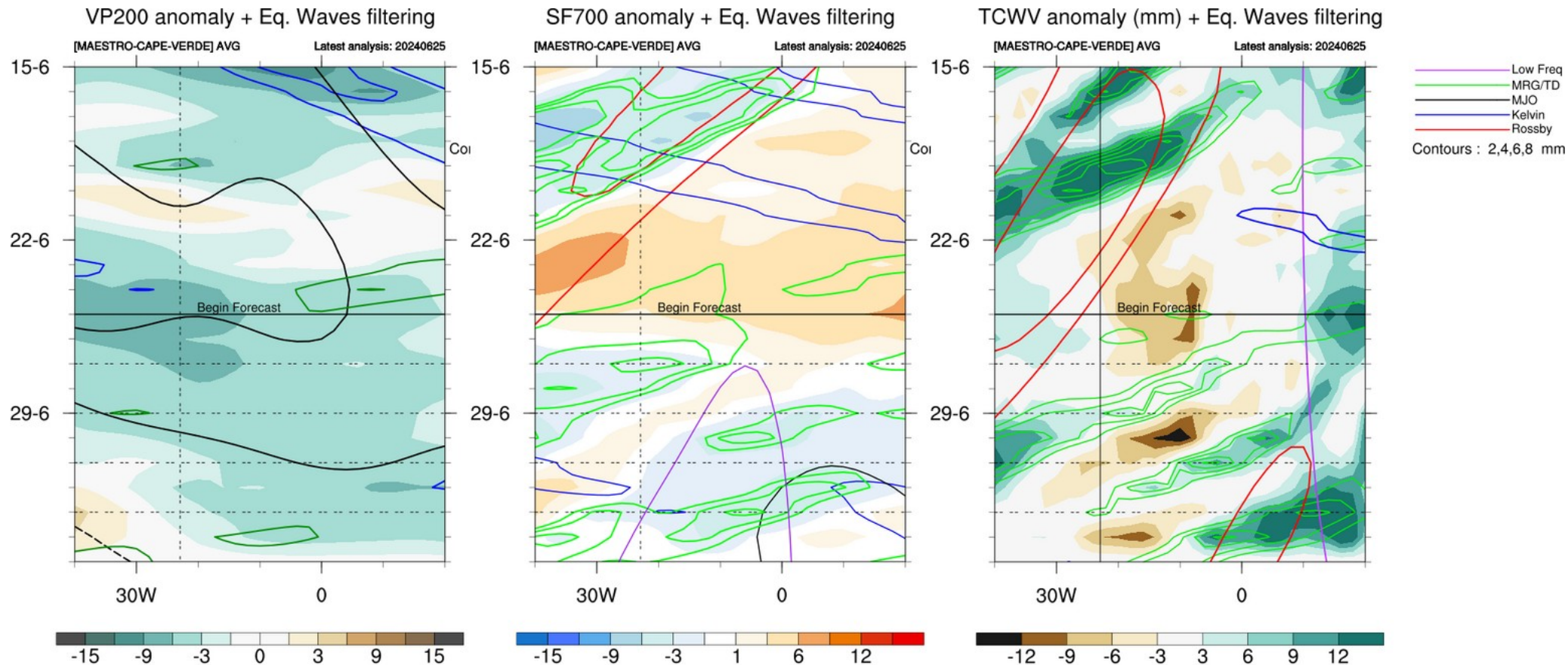


Cross section S/N @ -22W
20240627-12-UTC ech(60h)

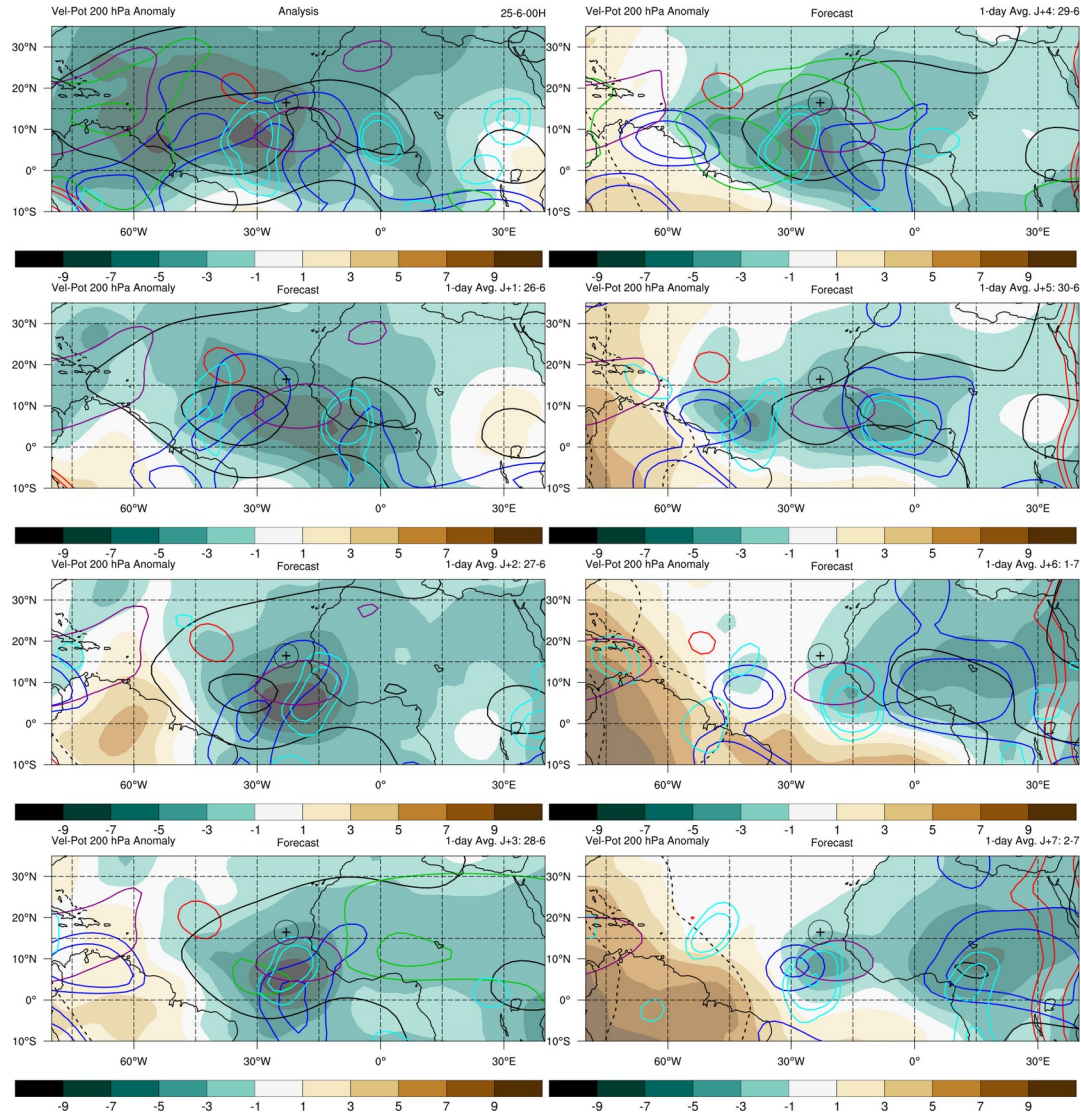


Week forecast J - J+7

Equatorial Waves filtering hovmollers

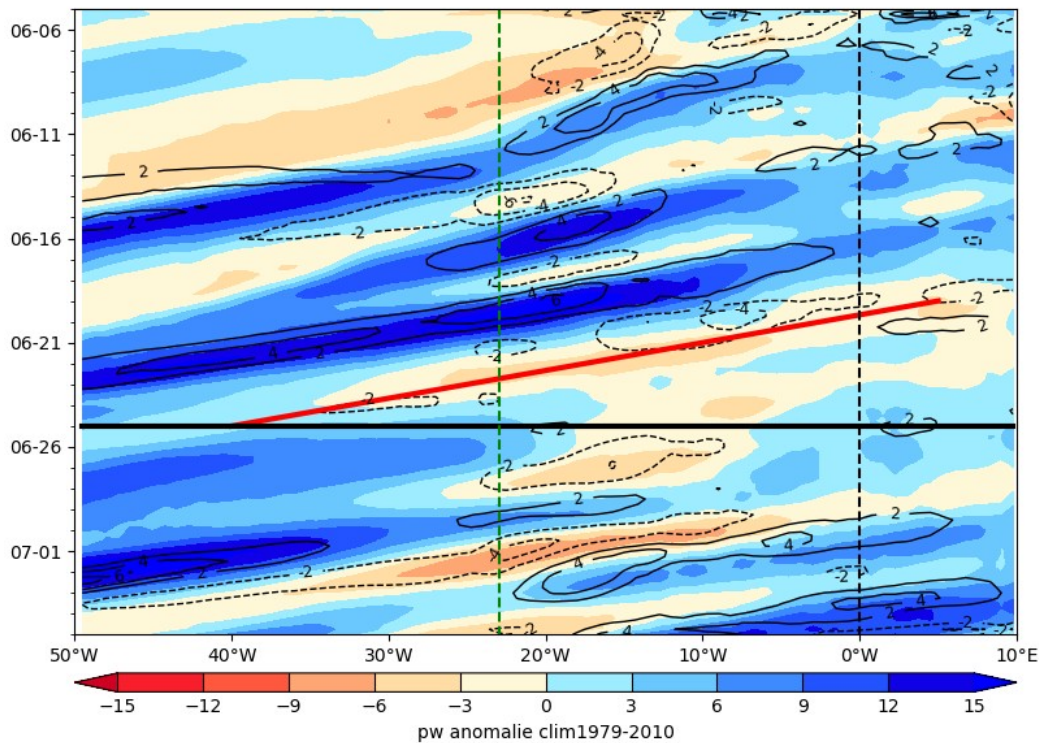


Waves : Velocity potential @ 200 hPa, day J to J+7

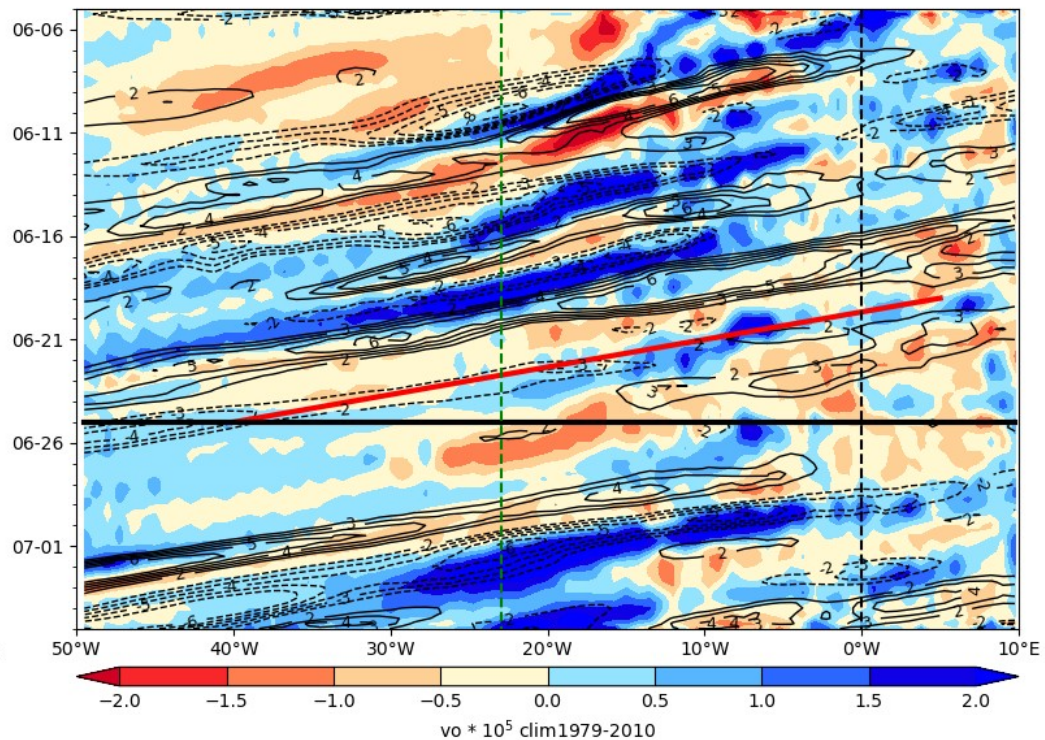


Hovmoller anomaly

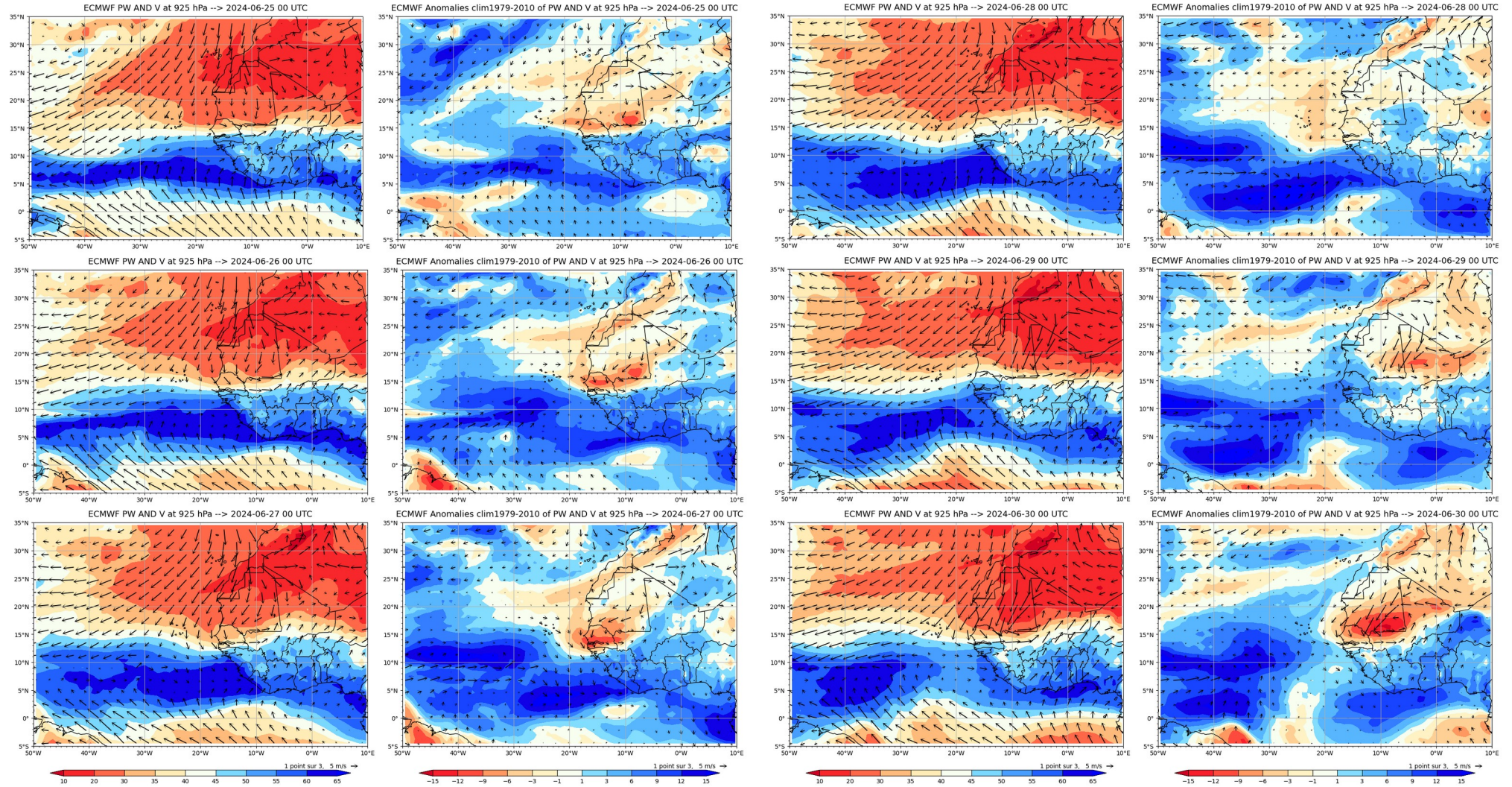
ECMWF PW (color) AND V at 925 hPa 2024-06-25



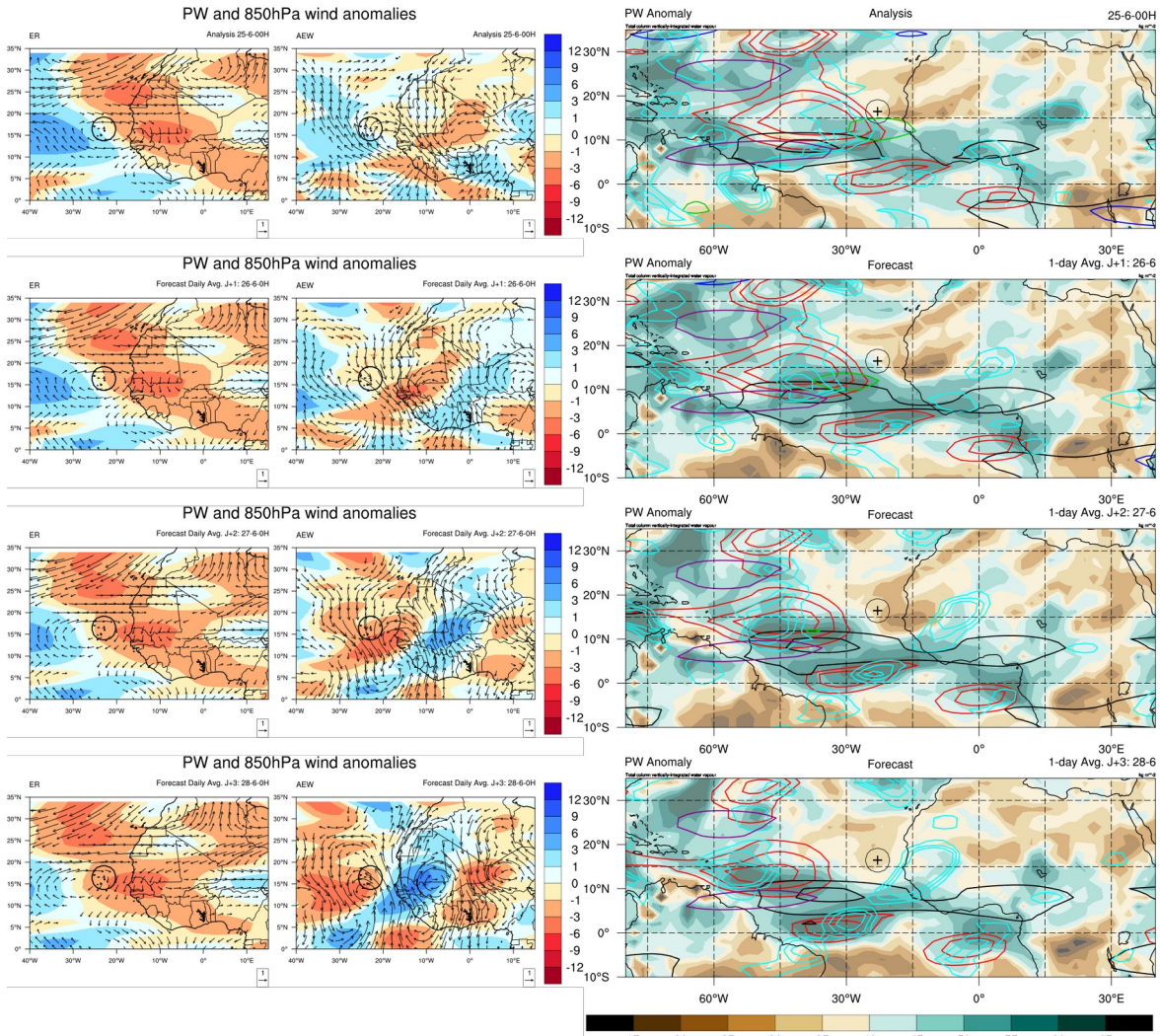
ECMWF Vorticity 850 hPa (color), V-700 hPa 2024-06-25



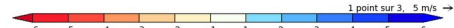
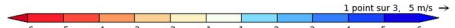
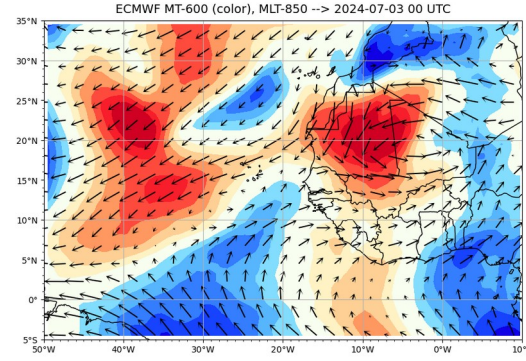
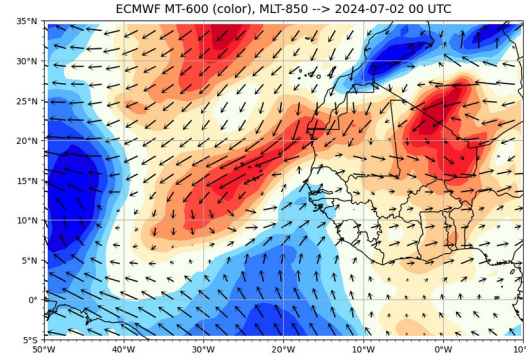
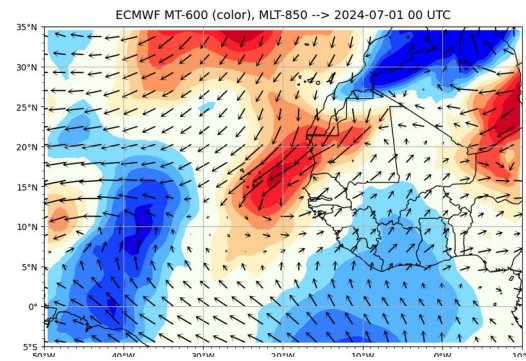
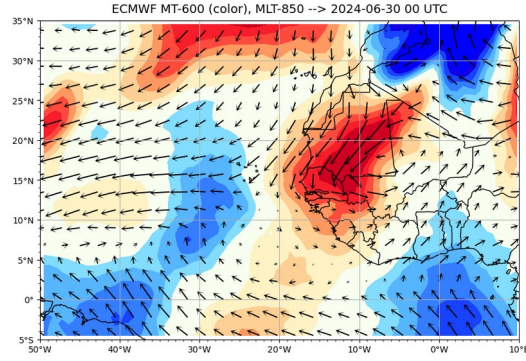
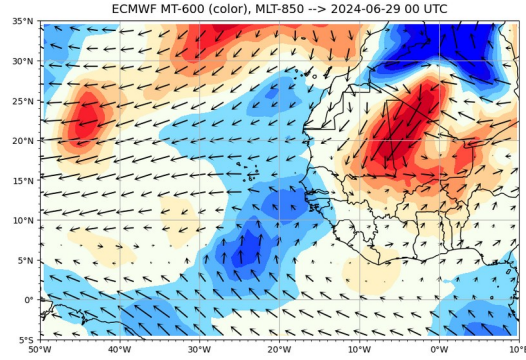
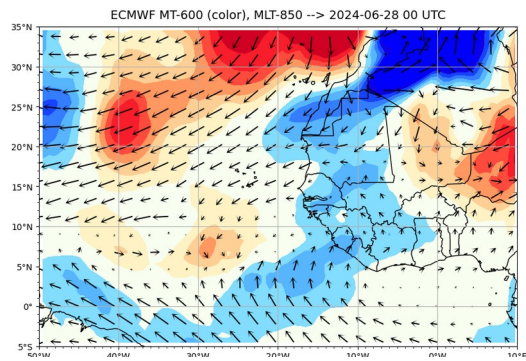
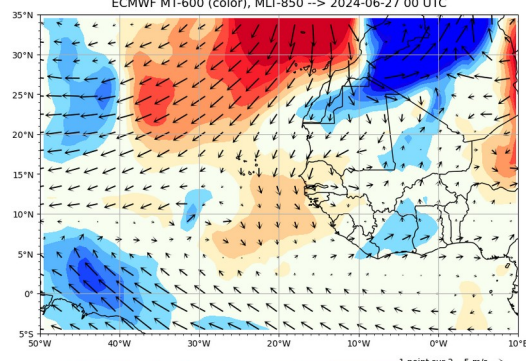
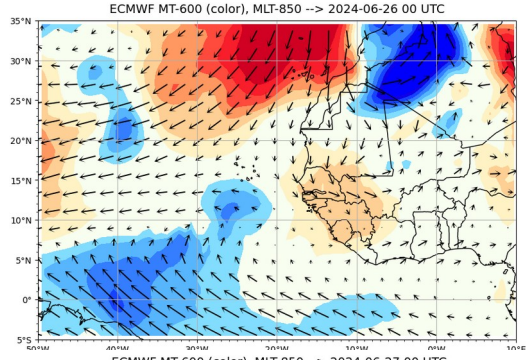
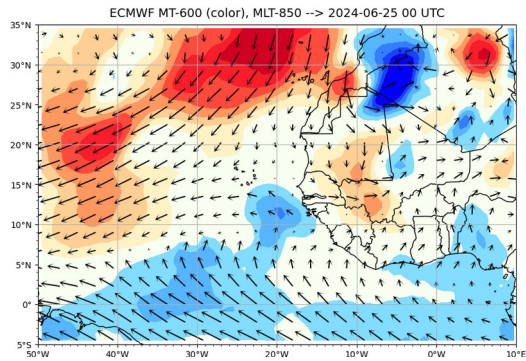
Daily PW and wind @ 925 hPa – total and anomalies

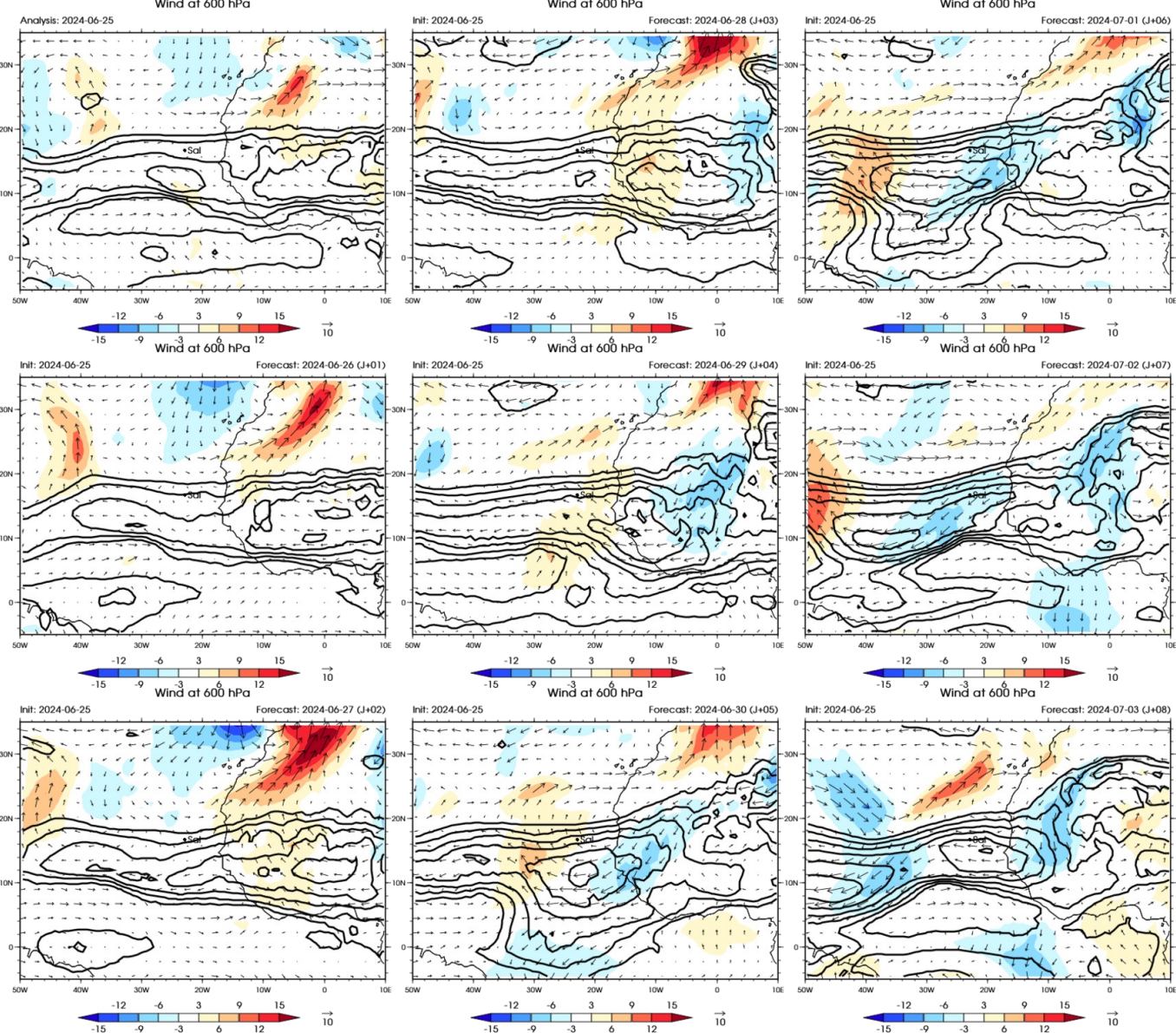


Decomposition PW/Wind and Waves contours



Monsoon Flow



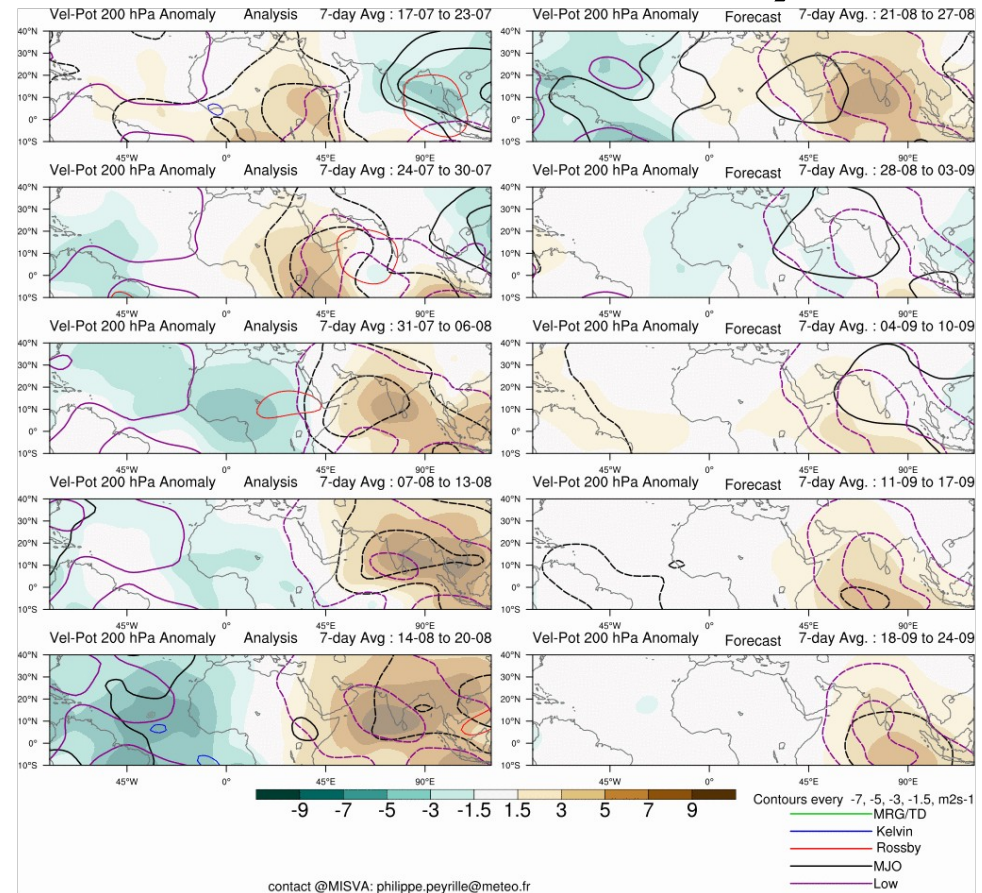
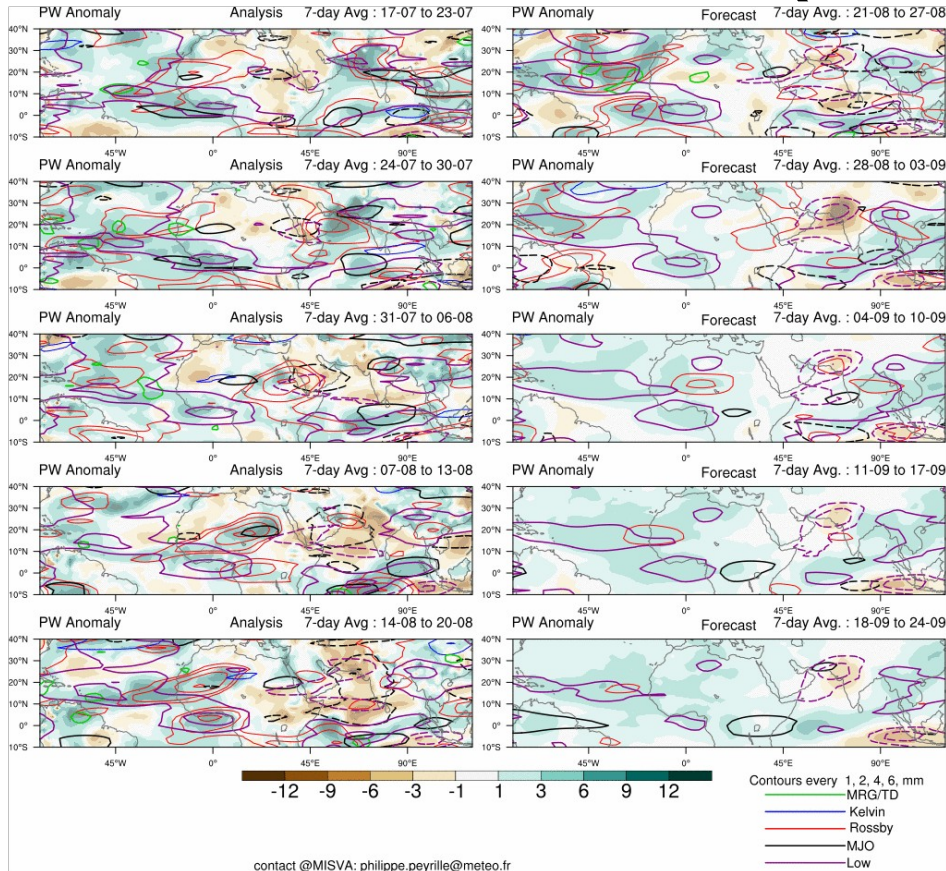


African Easterly Jet wind 600 hPa

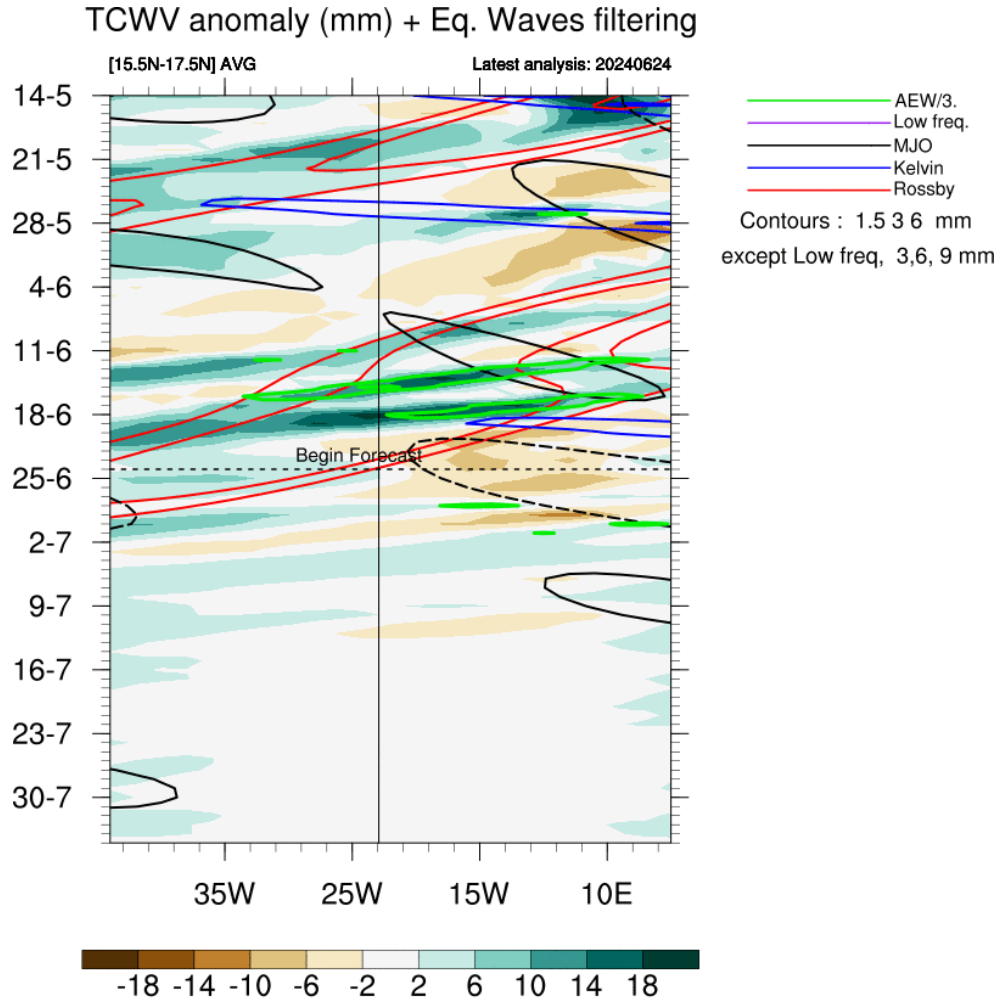
Subseasonal forecast
(updated once a week)

4 weeks forecast

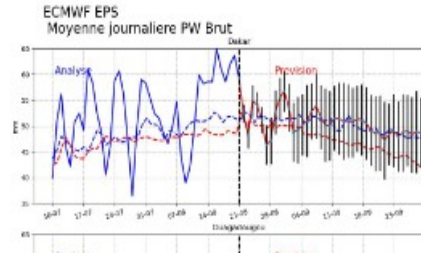
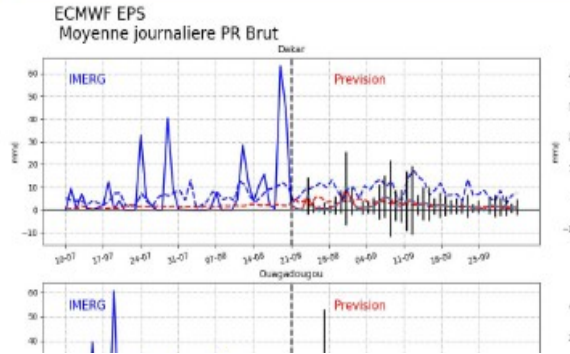
PW et VP200 (à zoomer sur SAL)



Hovmoller forecast PW over 4 weeks

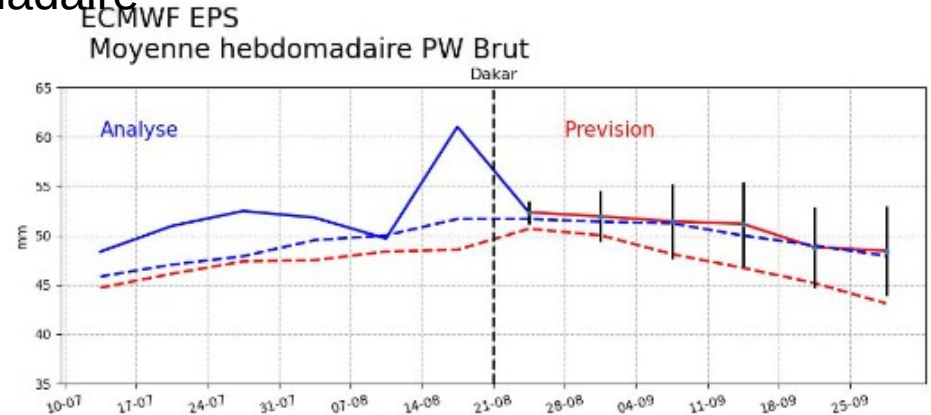
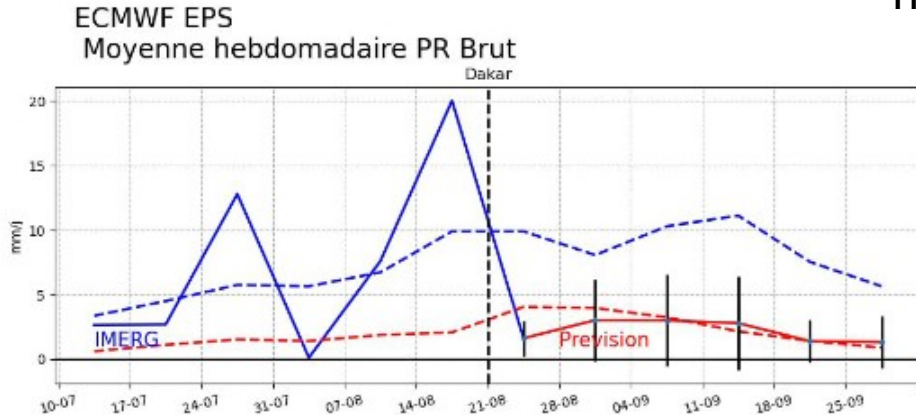


Temporal evolution PW, PR centrer sur SAL (+ EKE)



journalier

hebdomadaire



Summary

Param	J	J+1	J+2	J+3	J+4	J+5	Wave
PW/ PW*							
VP200							
VV 500							
vorticity							
Wind @ 700 hPa (m/s)							
PBL height (m)							
Base cloud (m)							
Orga cloud							

