

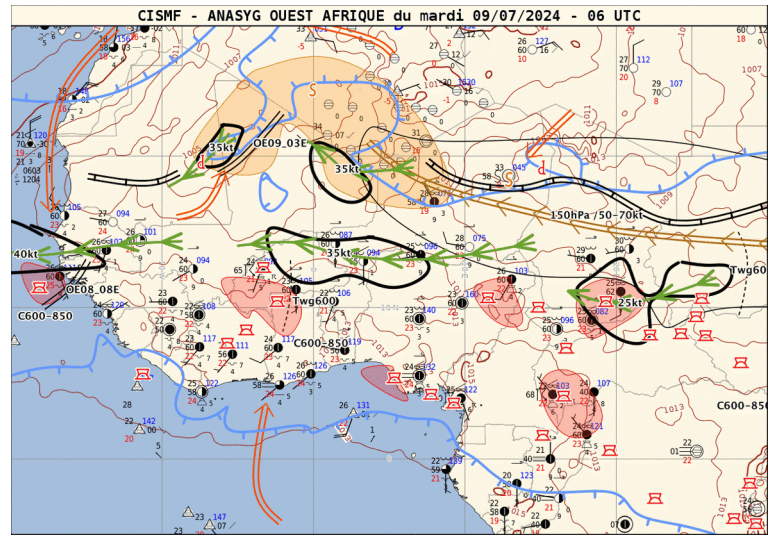
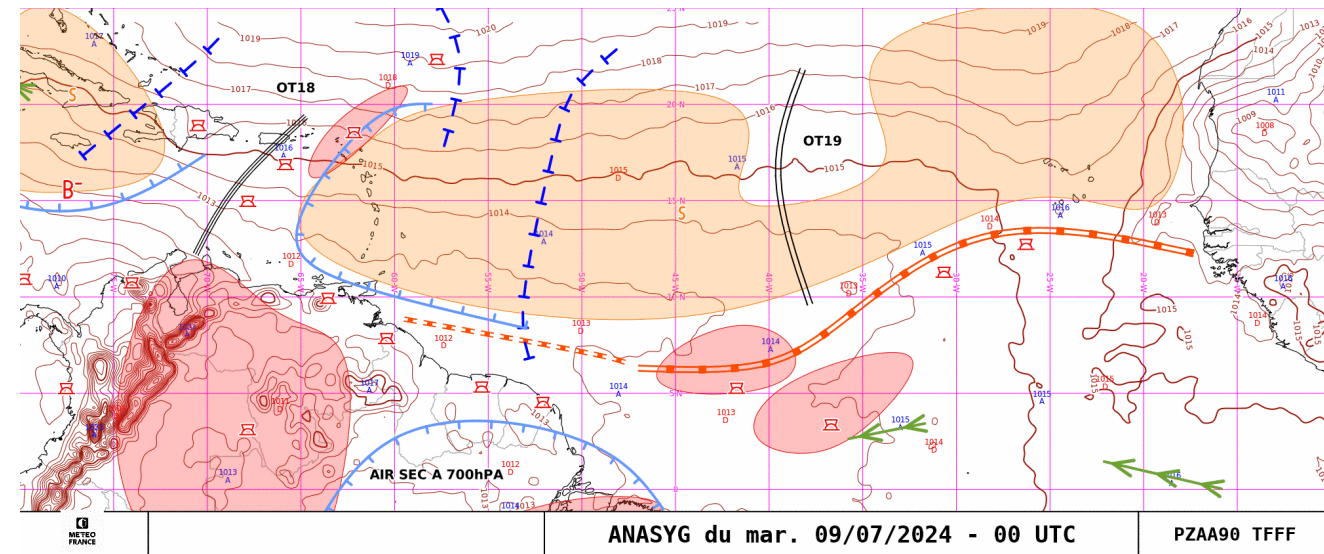
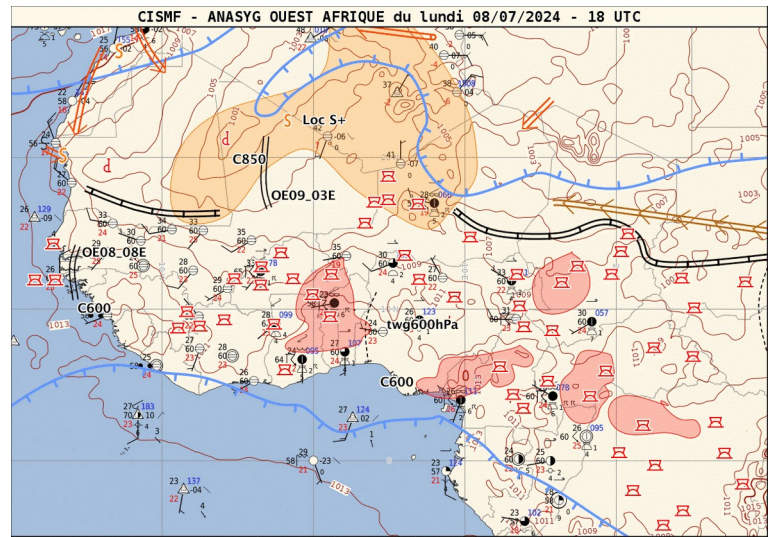
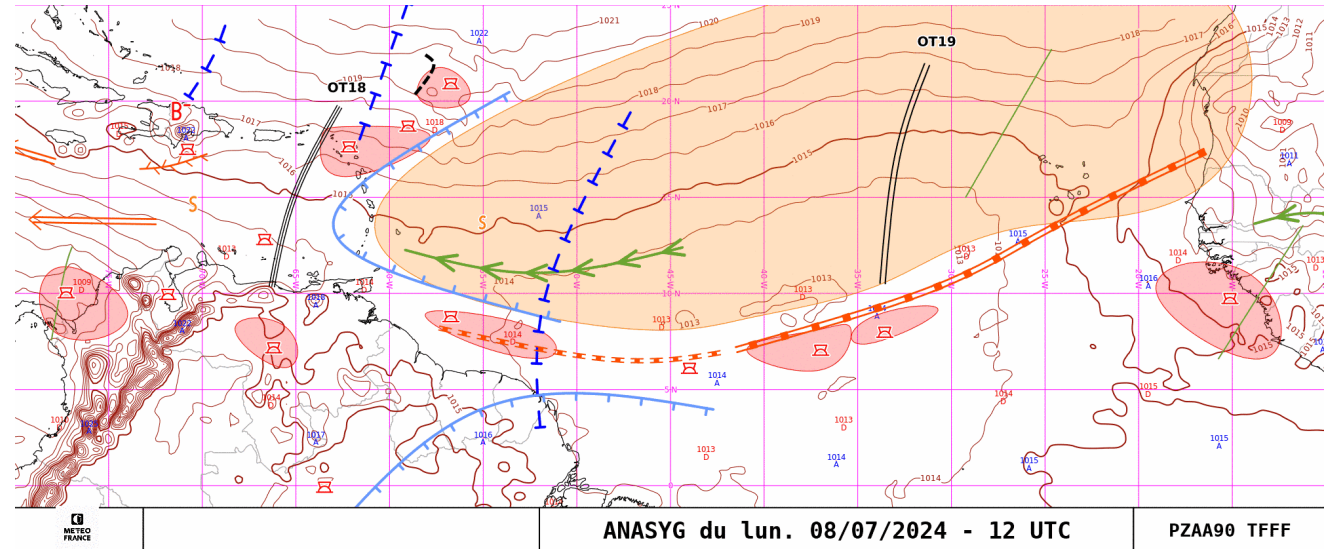
# DAILY SUMMARY MAESTRO

Four parts :

- 1. Evaluation J-1
- 2. Short term forecast J-J+36h
- 3. Week forecast J-J+7
- 4. Subseasonal forecast

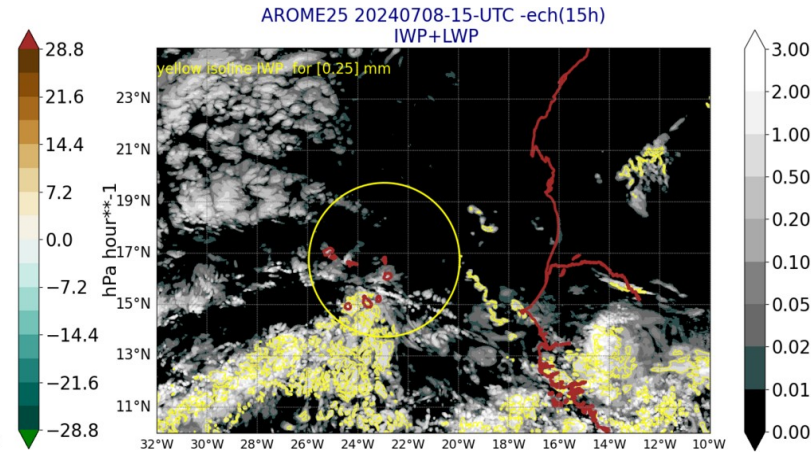
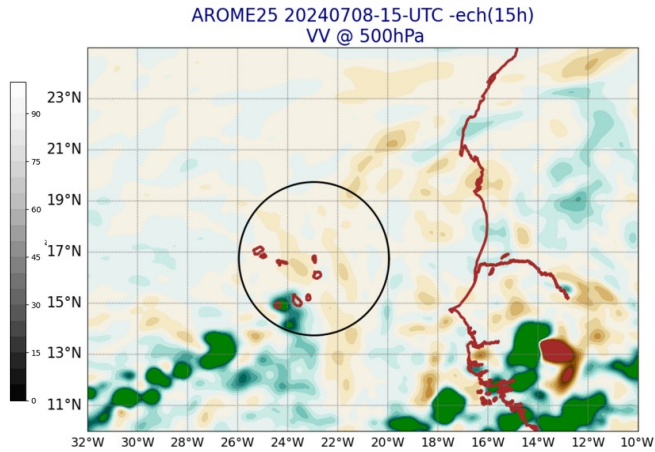
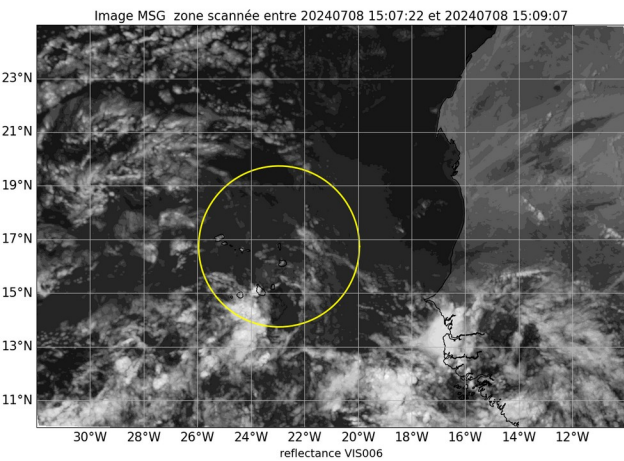
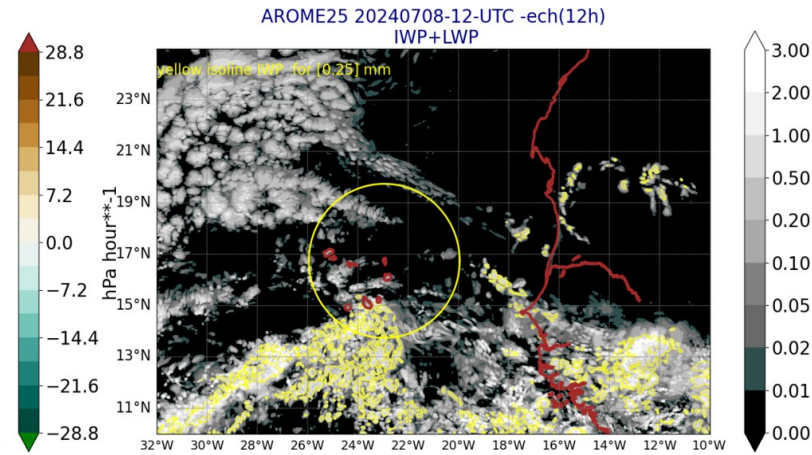
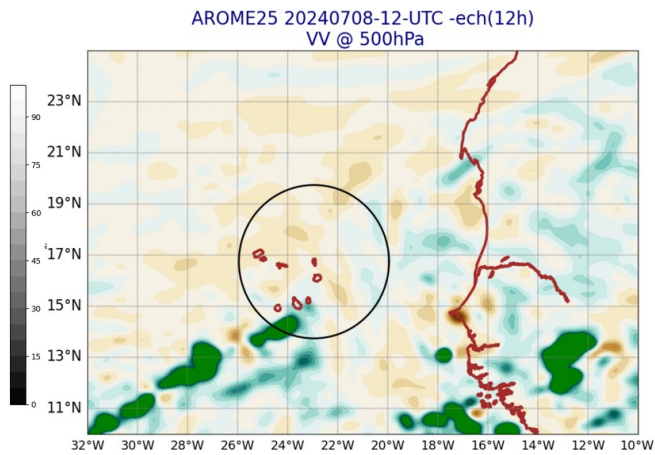
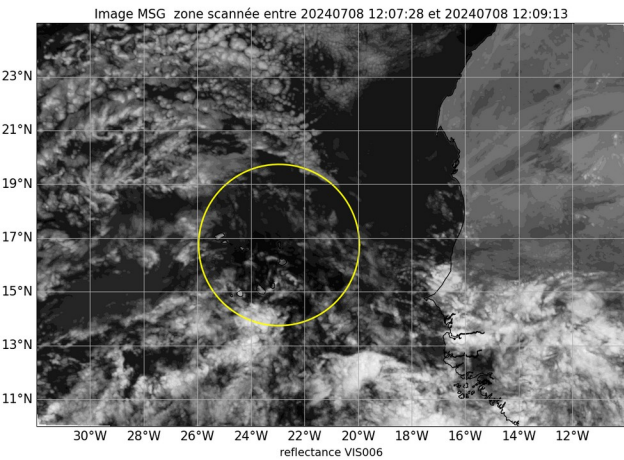
# Anasyg J-1 12 UTC et J 00 UTC

# Anasyg J-1 18 UTC et J 06 UTC



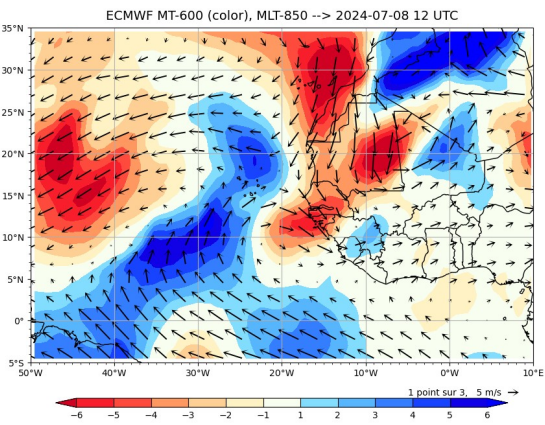
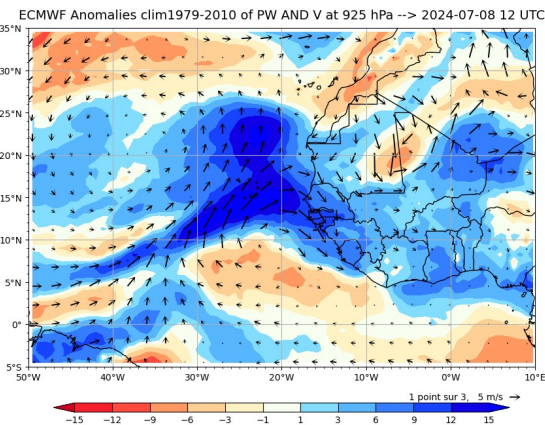
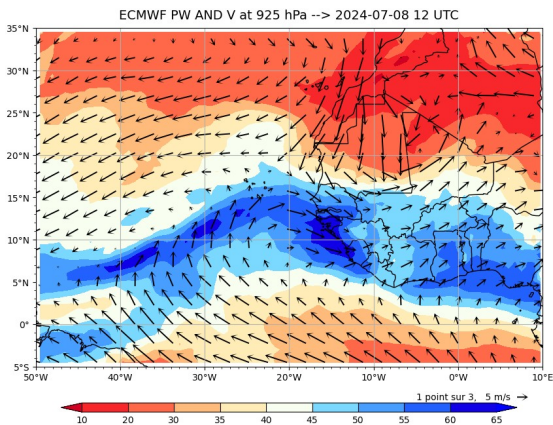
# Image MSG Visible J-1 12 and 15 UTC

# Arome J-1 12 and 15 UTC

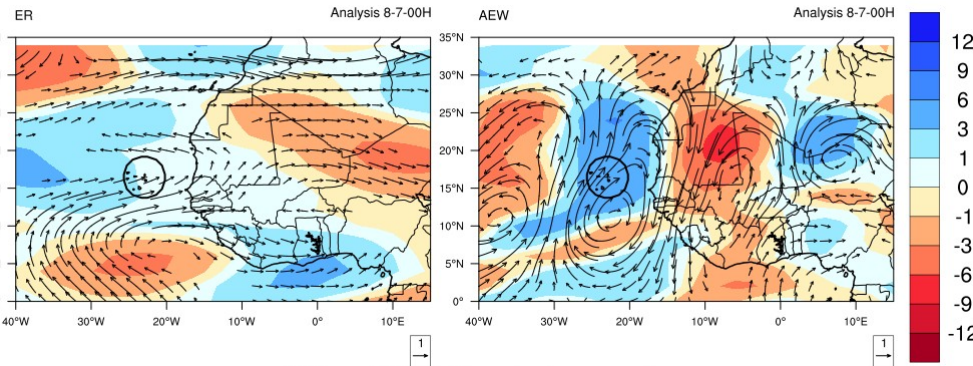


# Precipitable Water - Merid. Transport J-1 12UTC

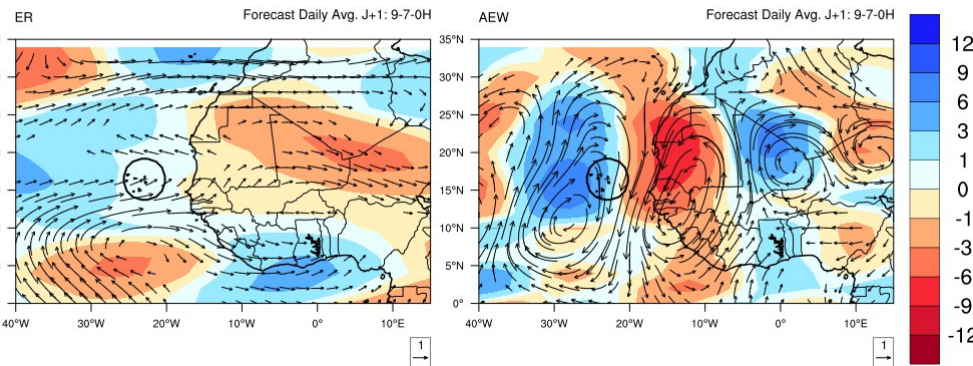
# Waves J-1 00 UTC and J 00UTC



## PW and 850hPa wind anomalies



## PW and 850hPa wind anomalies

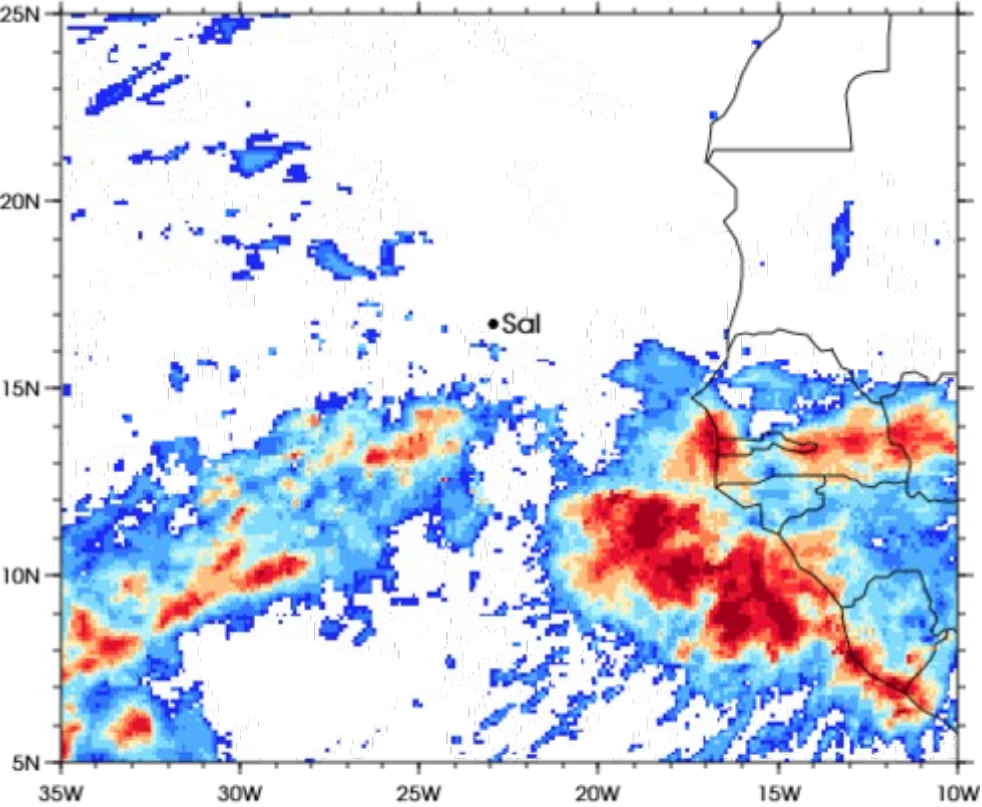


# Precipitation IMERG and AROME J-1

3IMERGHHE GPM IMERG Early Precipitation

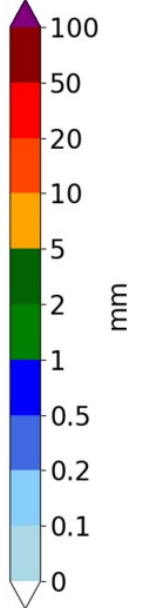
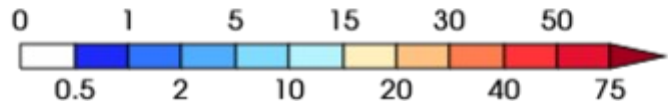
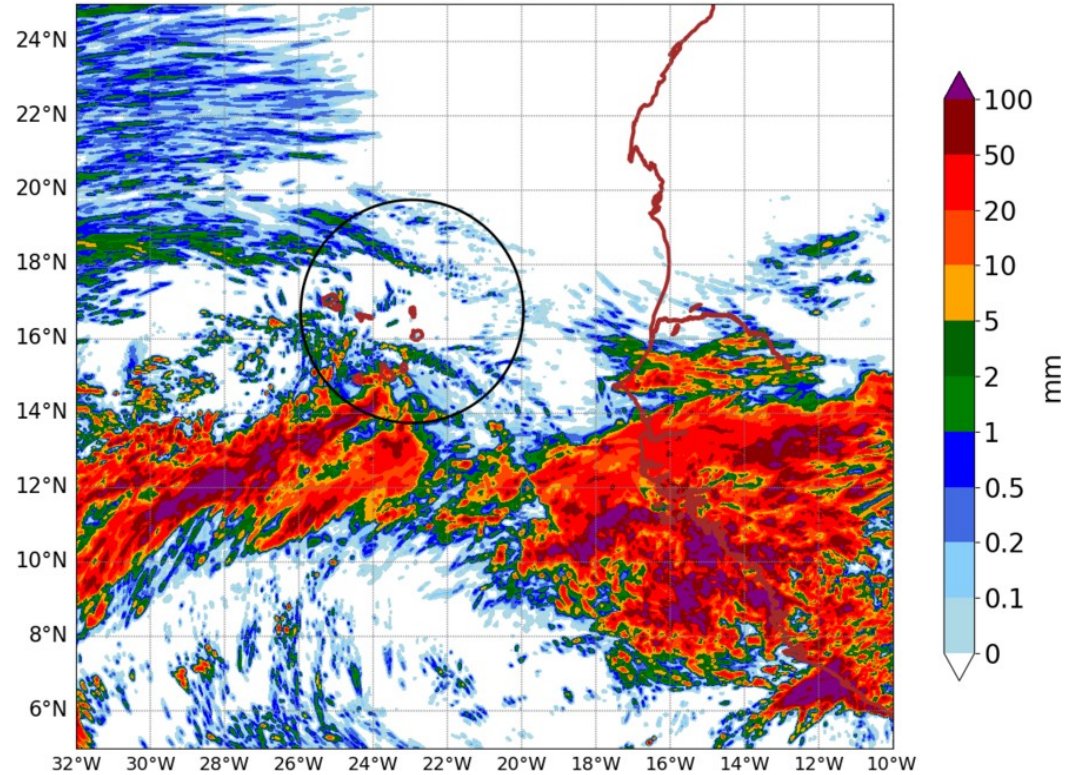
Daily accumulated: 2024-07-08

Units: mm/day



AROME25 20240709-00-UTC -ech(24h)

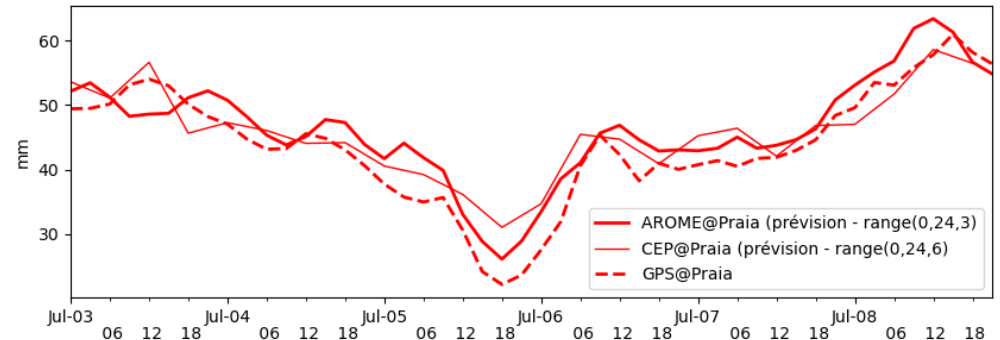
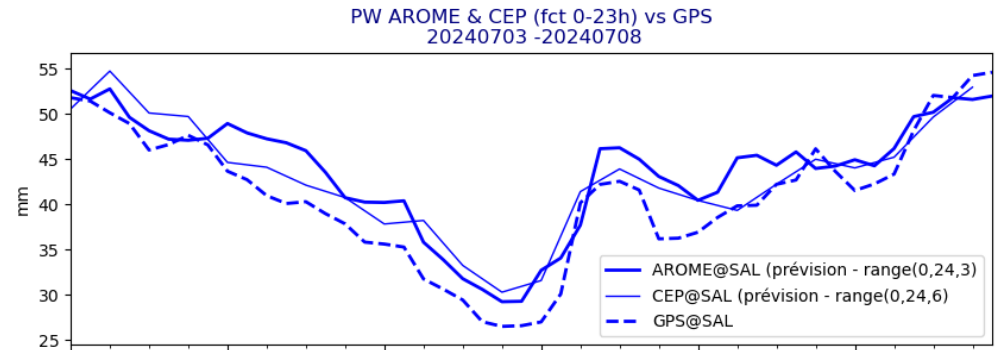
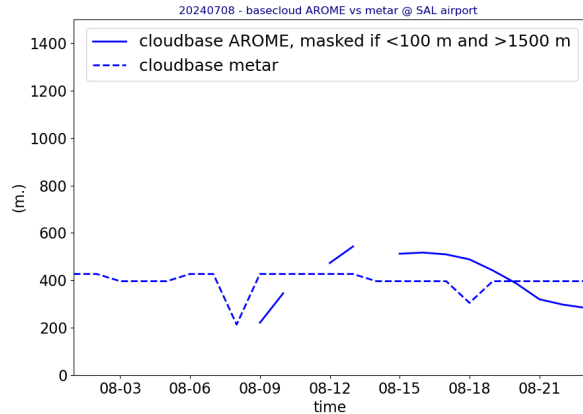
RR cumulated over 24h



# OBSERVATIONS J-1

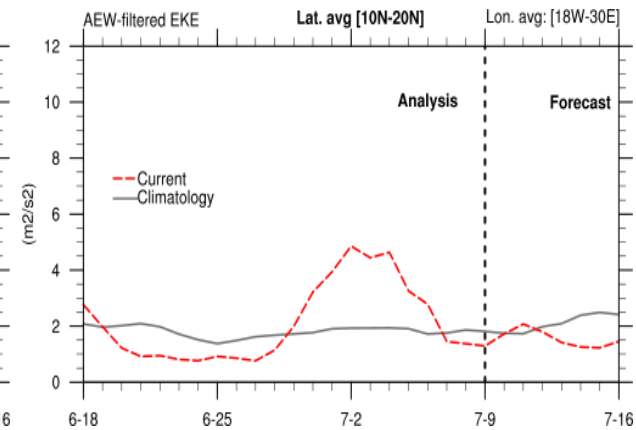
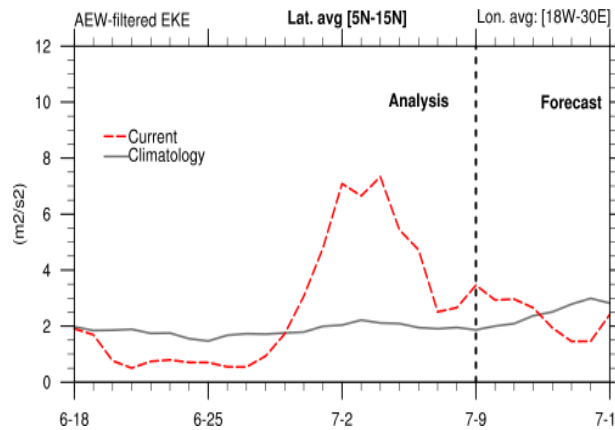
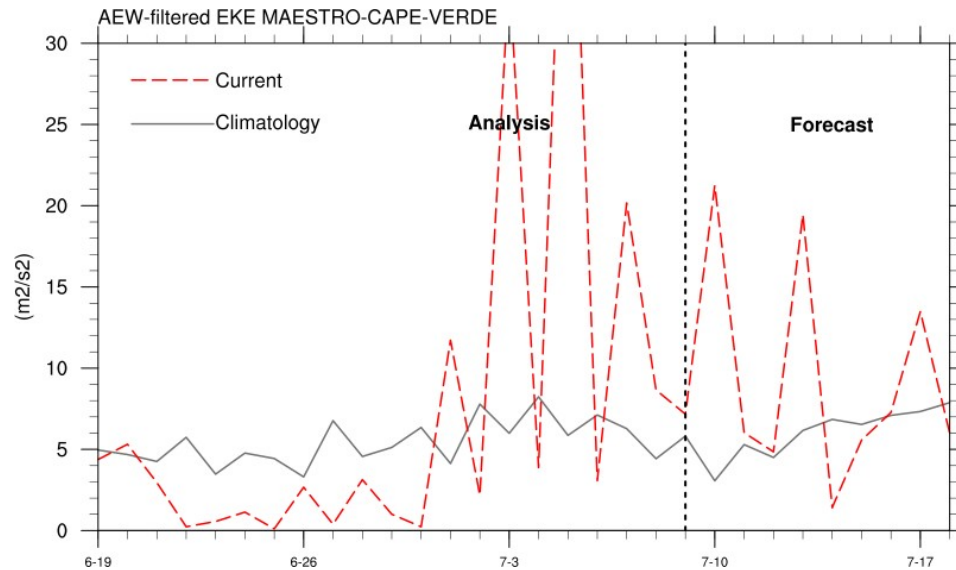
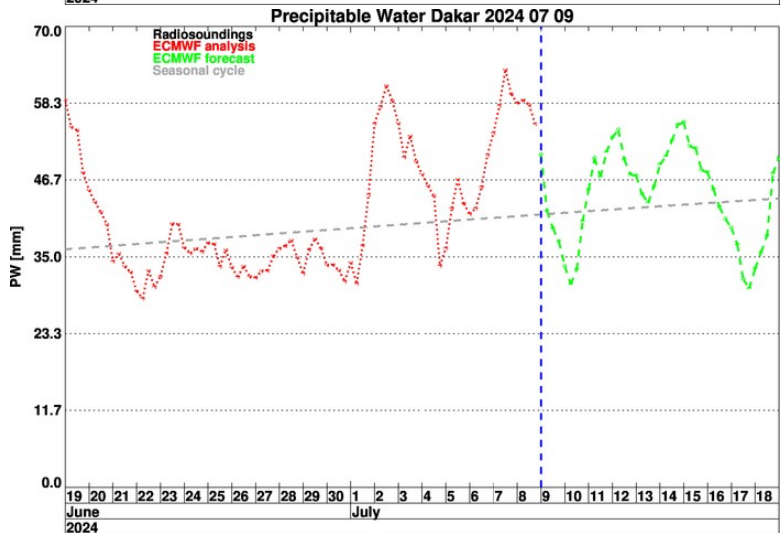
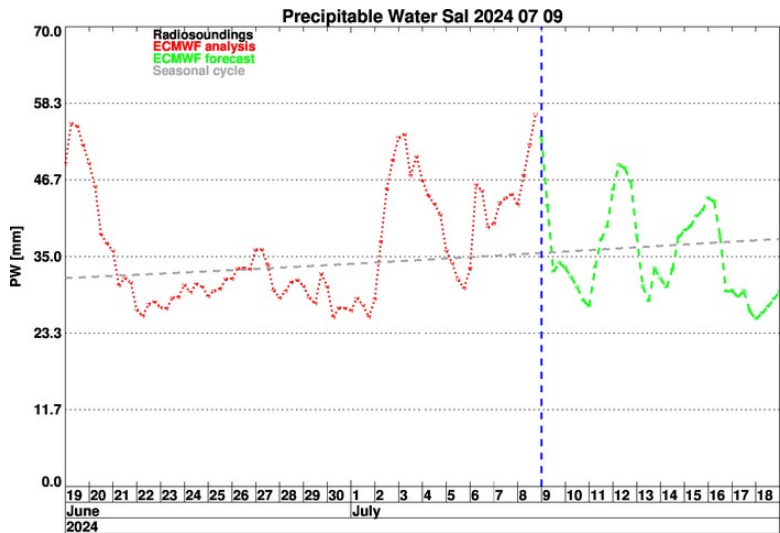
Lidar@ mindelo  
metar@sal

GPS @ Sal  
GPS @ Praia



Short term forecast J - J+36h

# Temporal evolution PW Sal et Dakar + EKE

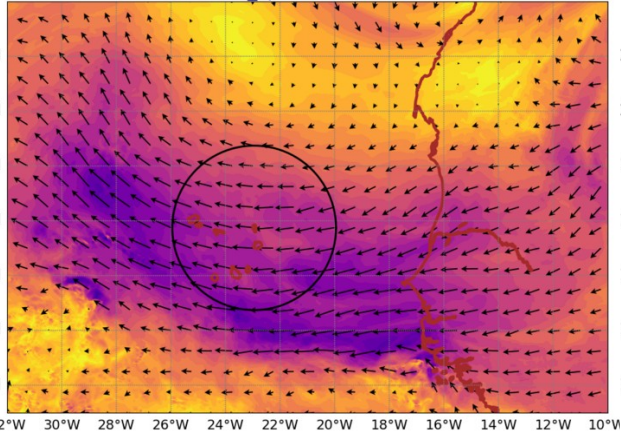




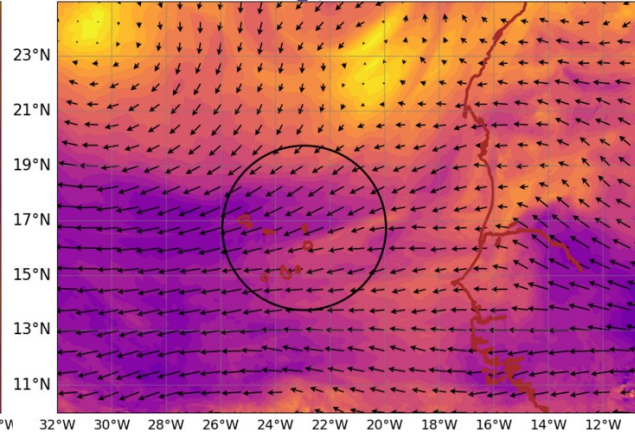
# AROME Wind @ 700 hPa

## AROME Wind @ 920 hPa

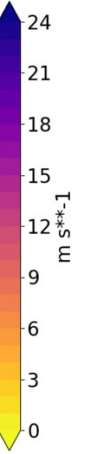
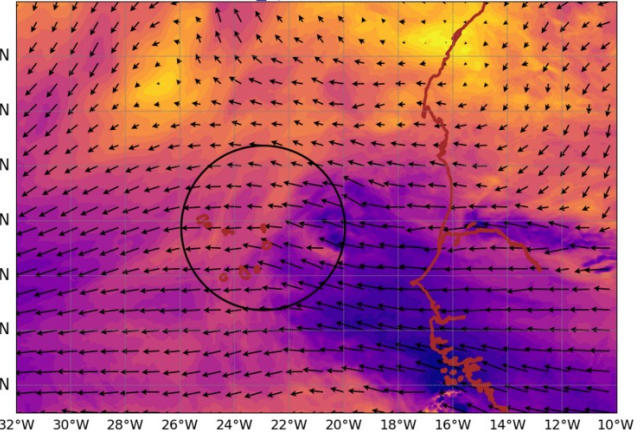
AROME25 20240709-12-UTC -ech(12h)  
wind\_sp700 @ 700hPa



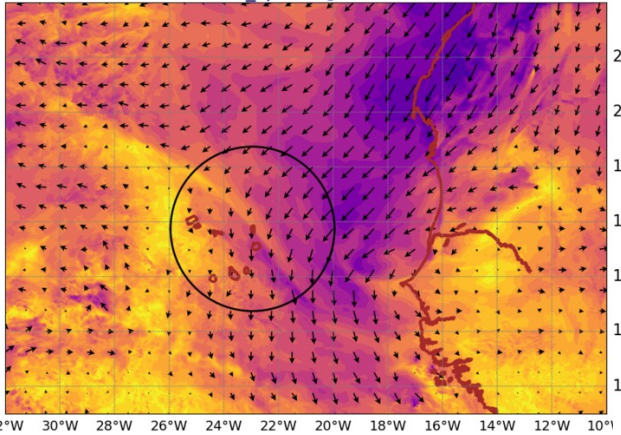
AROME25 20240710-12-UTC -ech(36h)  
wind\_sp700 @ 700hPa



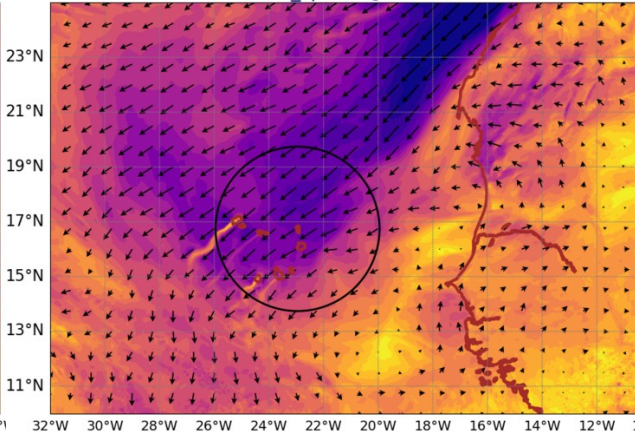
AROME25 20240711-12-UTC -ech(60h)  
wind\_sp700 @ 700hPa



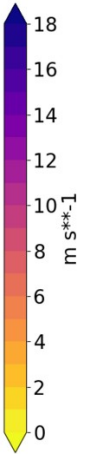
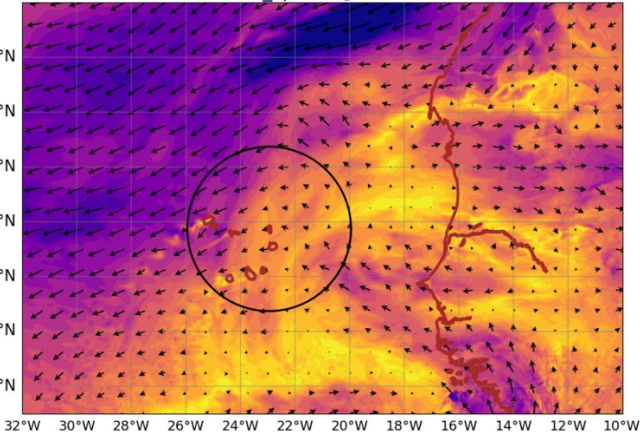
AROME25 20240709-12-UTC -ech(12h)  
wind\_sp920 @ 920hPa



AROME25 20240710-12-UTC -ech(36h)  
wind\_sp920 @ 920hPa



AROME25 20240711-12-UTC -ech(60h)  
wind\_sp920 @ 920hPa



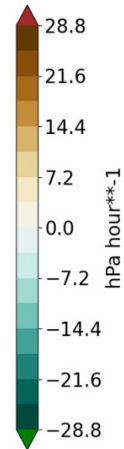
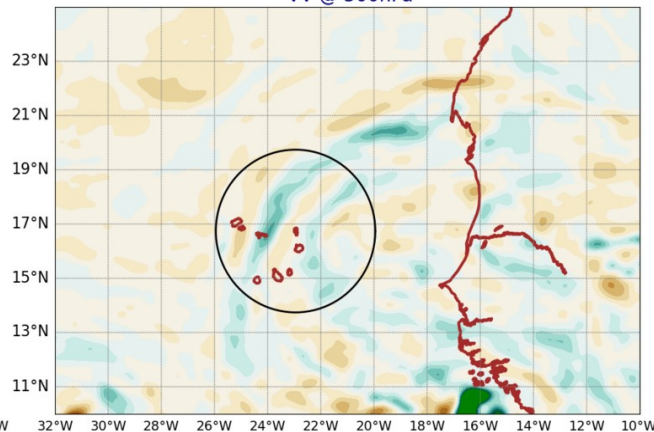
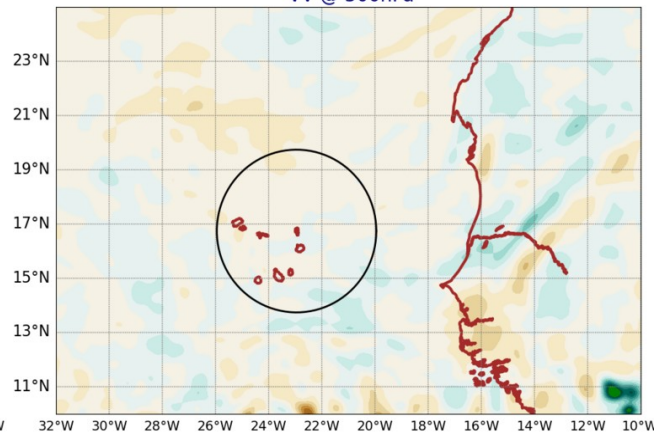
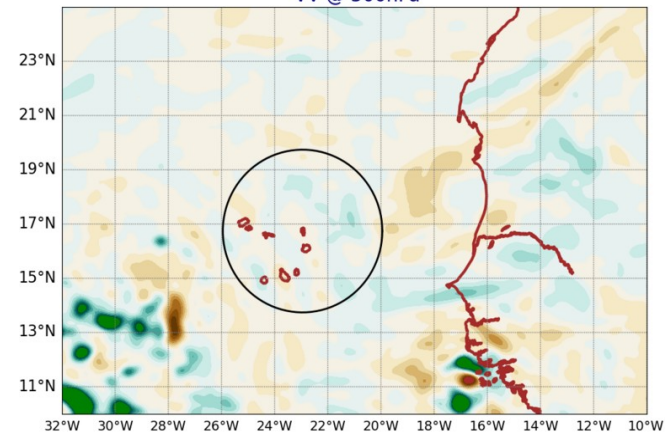
# AROME VV @ 500hPa

## AROME LWP+IWP

AROME25 20240709-12-UTC -ech(12h)  
VV @ 500hPa

AROME25 20240710-12-UTC -ech(36h)  
VV @ 500hPa

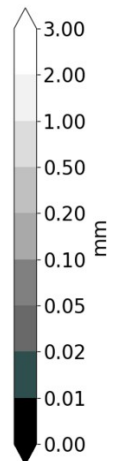
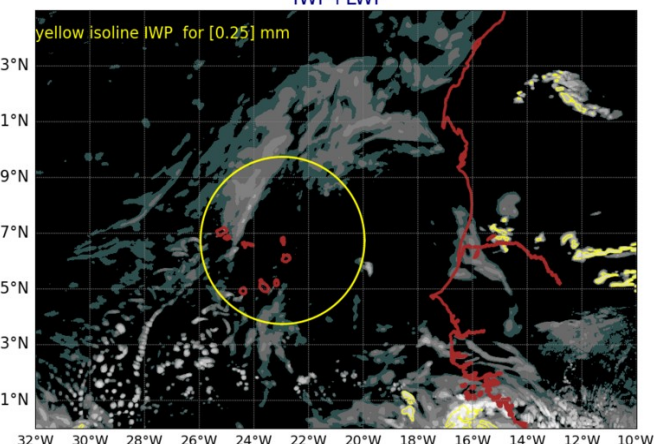
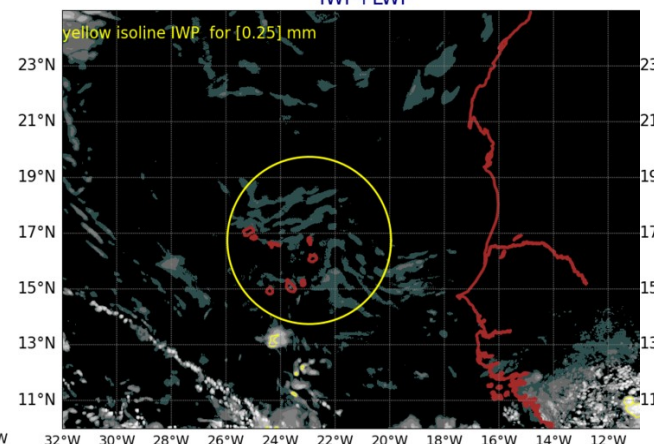
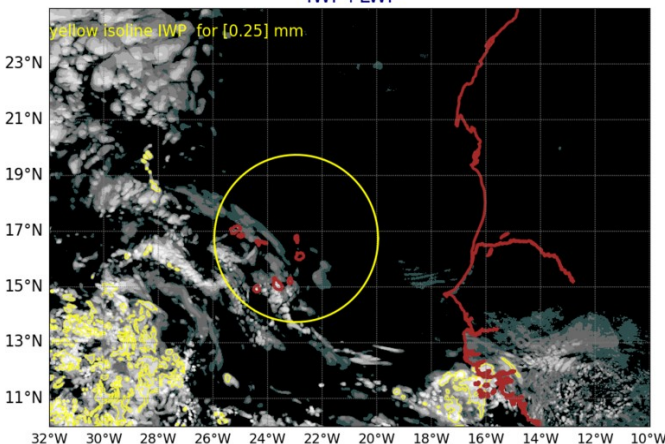
AROME25 20240711-12-UTC -ech(60h)  
VV @ 500hPa



AROME25 20240709-12-UTC -ech(12h)  
IWP+LWP

AROME25 20240710-12-UTC -ech(36h)  
IWP+LWP

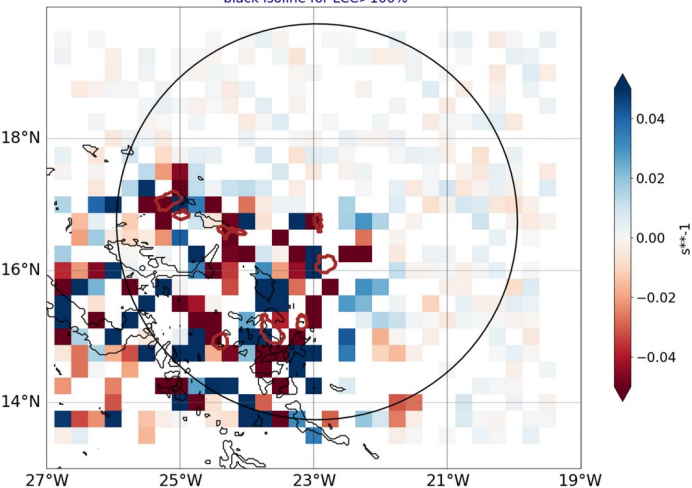
AROME25 20240711-12-UTC -ech(60h)  
IWP+LWP



# Smoc

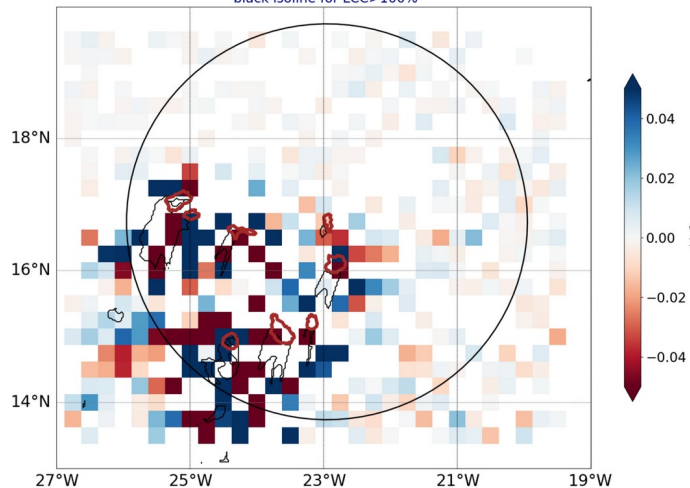
-blue for conv in subcloud layer-  
dark isoline for low cloud cover

AROME25 regrid 0.25  
20240709-12-UTC -ech(12h)  
blue for conv in subcloud layer  
black isoline for LCC>100%



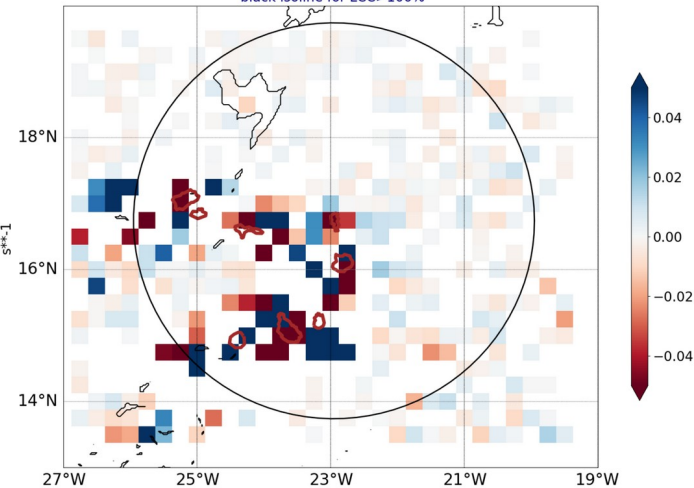
white box where subcloud and cloud layer have same sign of div

AROME25 regrid 0.25  
20240710-12-UTC -ech(36h)  
blue for conv in subcloud layer  
black isoline for LCC>100%



white box where subcloud and cloud layer have same sign of div

AROME25 regrid 0.25  
20240711-12-UTC -ech(60h)  
blue for conv in subcloud layer  
black isoline for LCC>100%



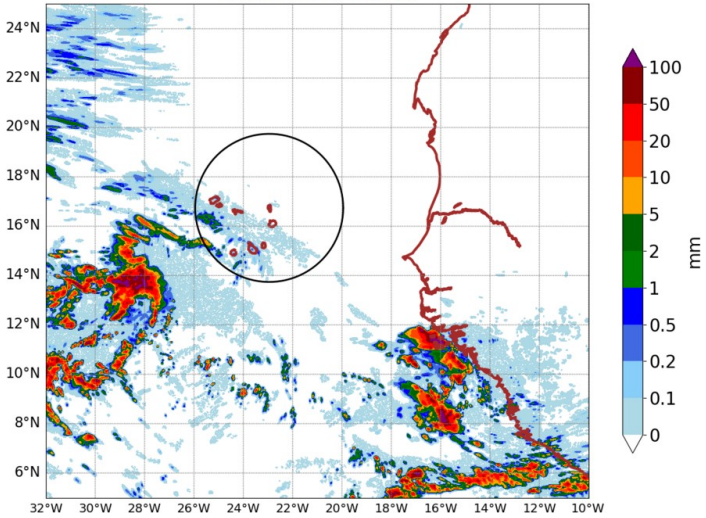
white box where subcloud and cloud layer have same sign of div

over 6h ech 12h and 15h

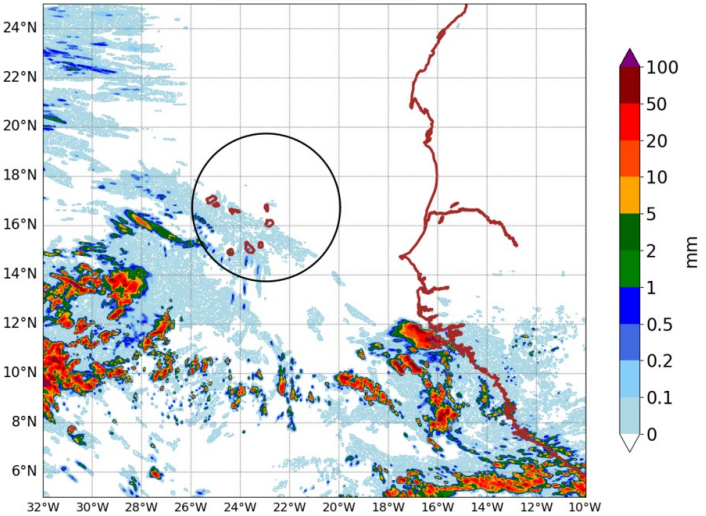
# AROME precipitation

over 24h ech 36h and 60h

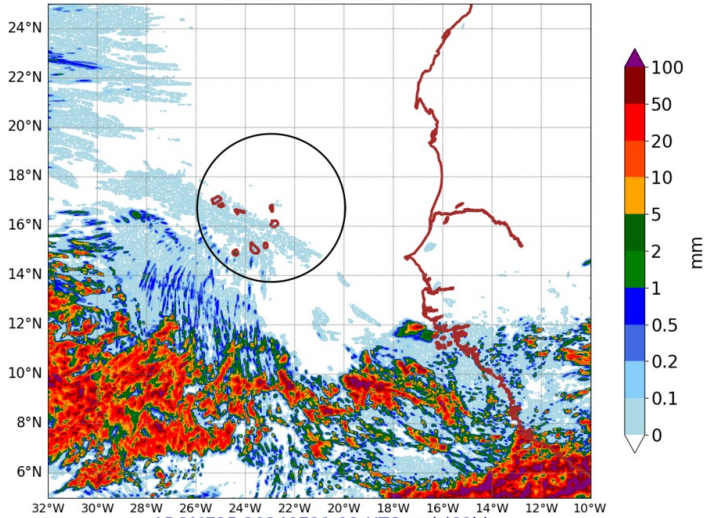
AROME25 20240709-12-UTC -ech(12h)  
RR cumulated over 6h



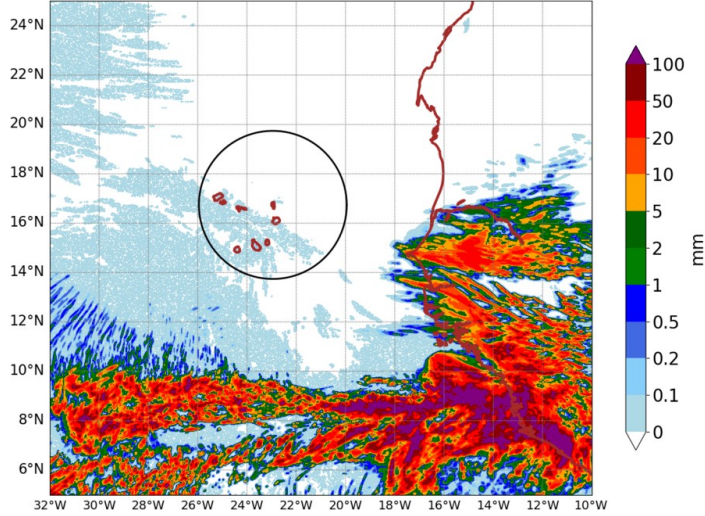
AROME25 20240709-15-UTC -ech(15h)  
RR cumulated over 6h



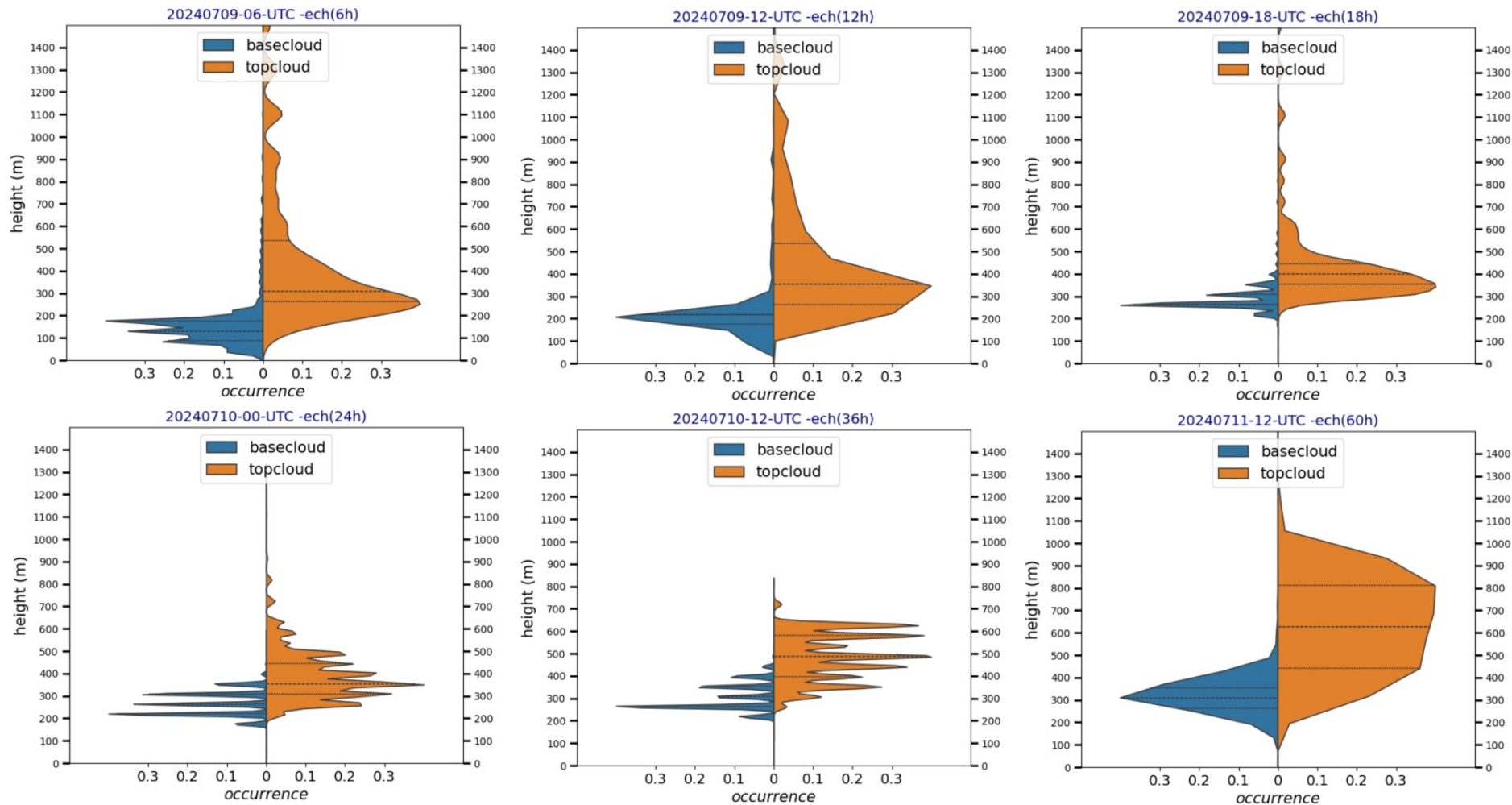
AROME25 20240710-12-UTC -ech(36h)  
RR cumulated over 24h



AROME25 20240711-12-UTC -ech(60h)  
RR cumulated over 24h

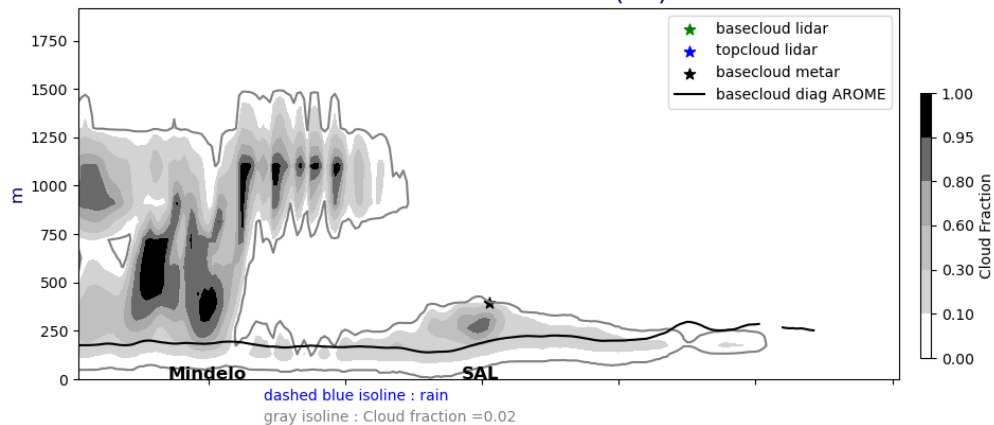


# AROME base and top cloud (mean in the 3° circle)

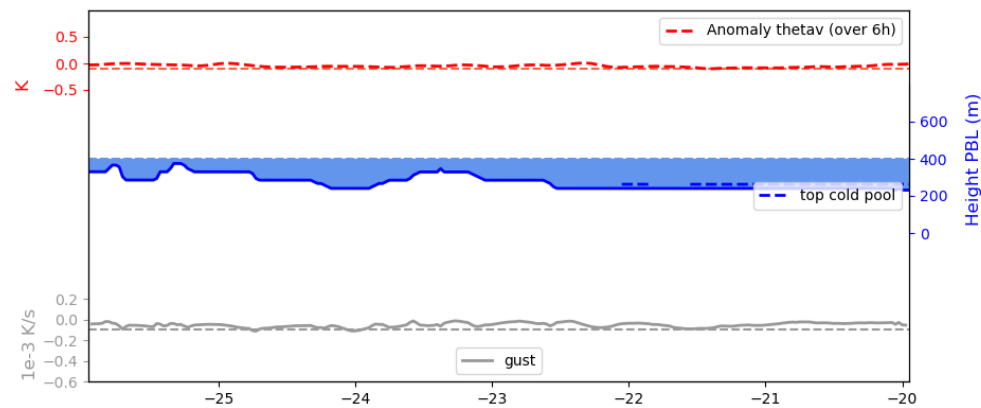
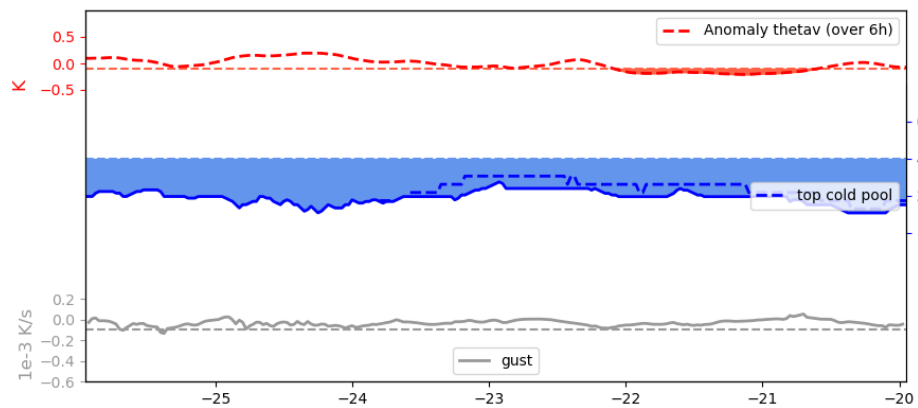
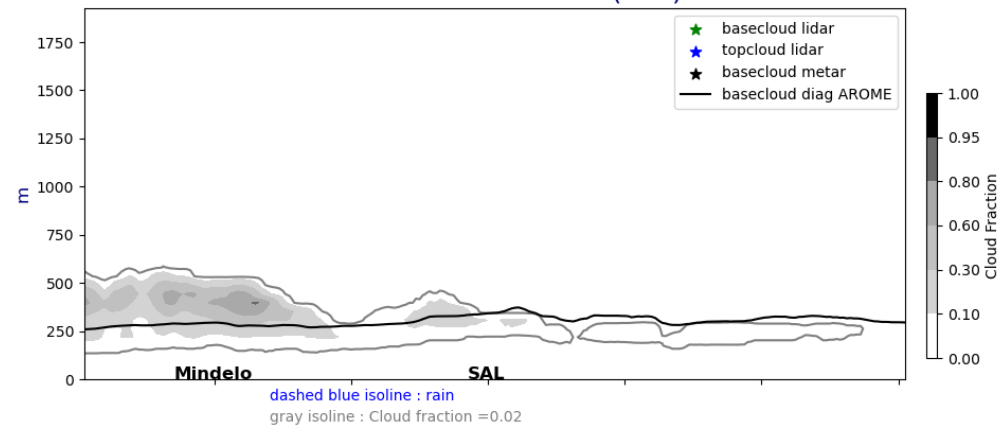


# Lat. cross section @17°5N fct : 01UTC, 12UTC

Cross section E/W @ 17.5N  
20240709-01-UTC ech(1h)

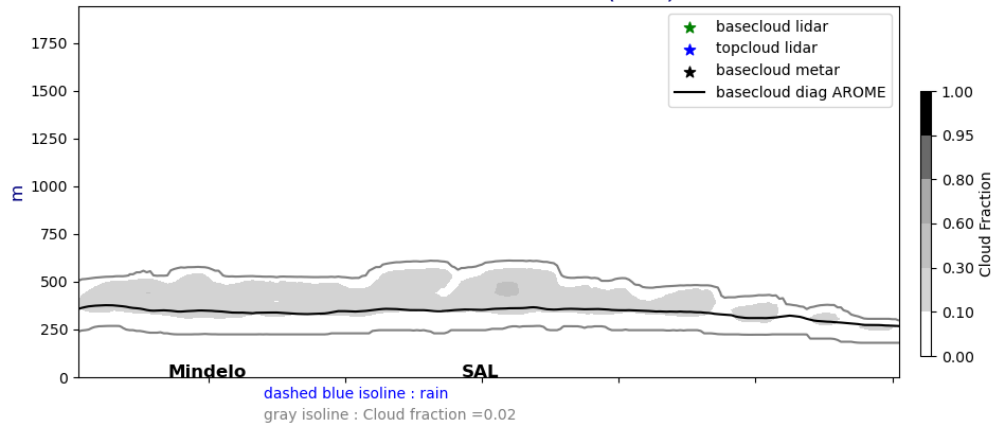


Cross section E/W @ 17.5N  
20240709-12-UTC ech(12h)

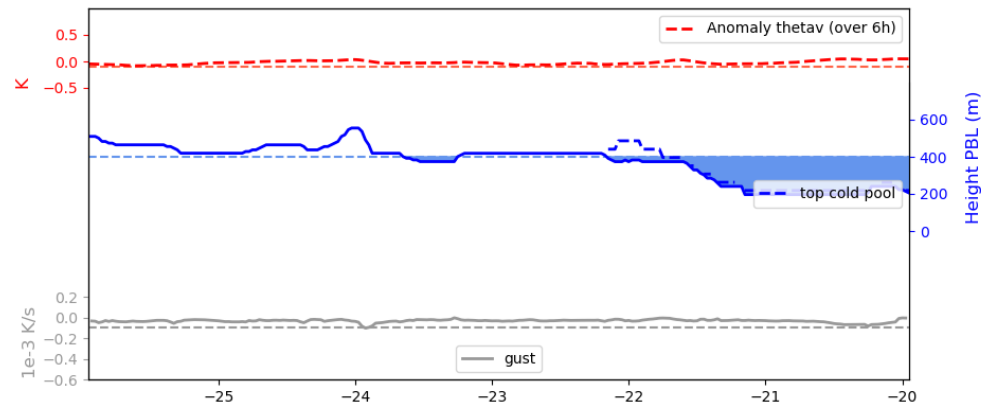
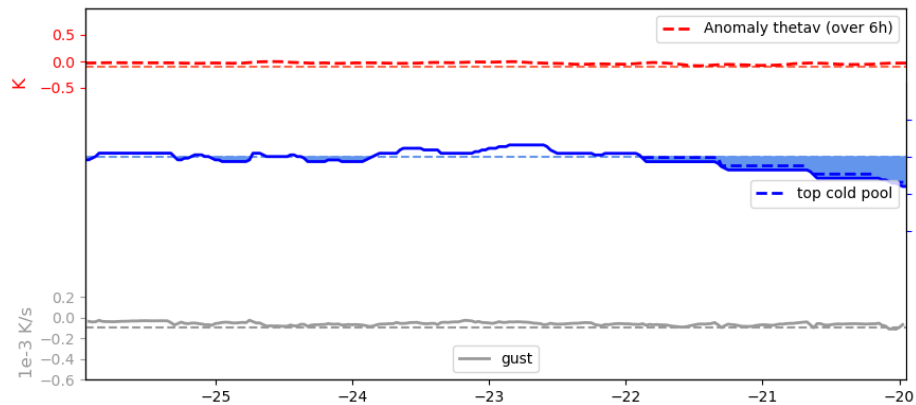
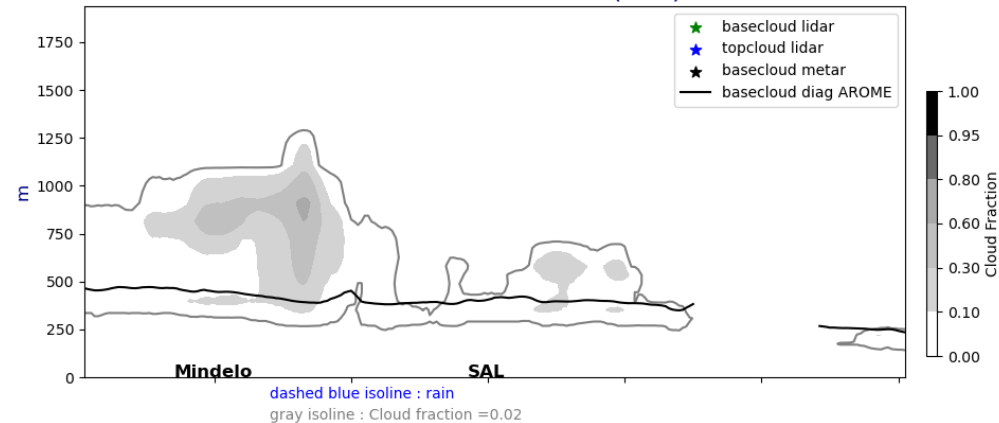


# Lat. cross section @17°5N fct : J+1 and J+2 @ 12UTC

Cross section E/W @ 17.5N  
20240710-12-UTC ech(36h)

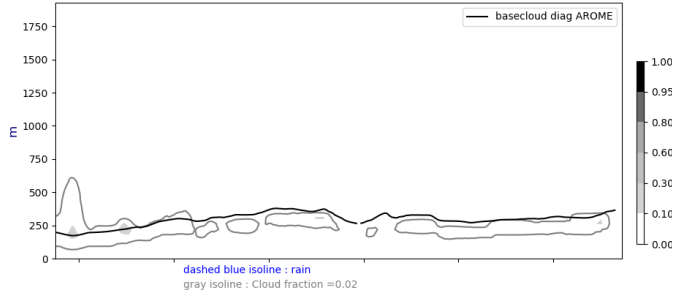


Cross section E/W @ 17.5N  
20240711-12-UTC ech(60h)

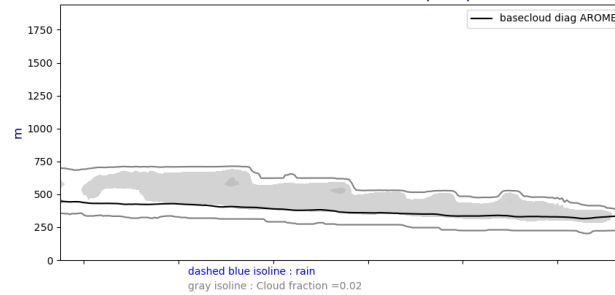


# Lon. cross section @22W fct : J,J+1, J+2 @ 12 UTC

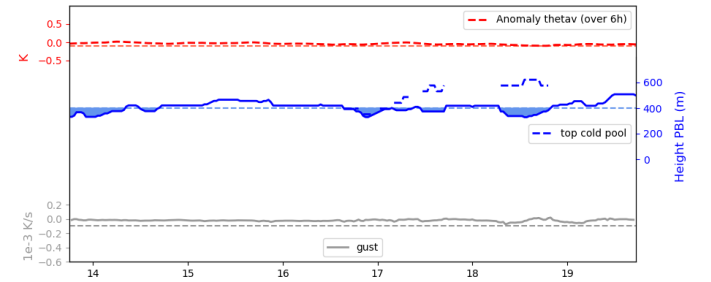
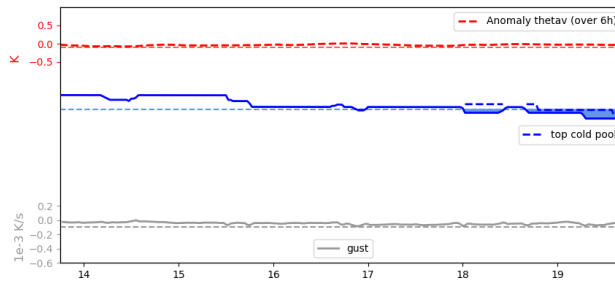
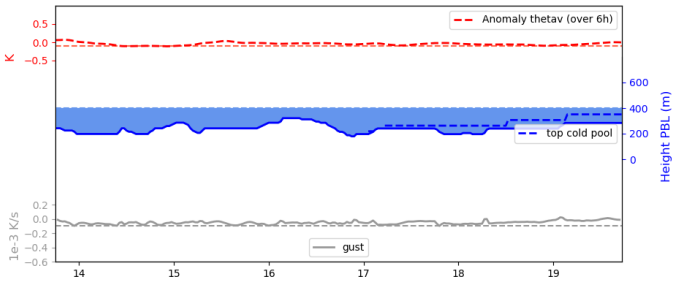
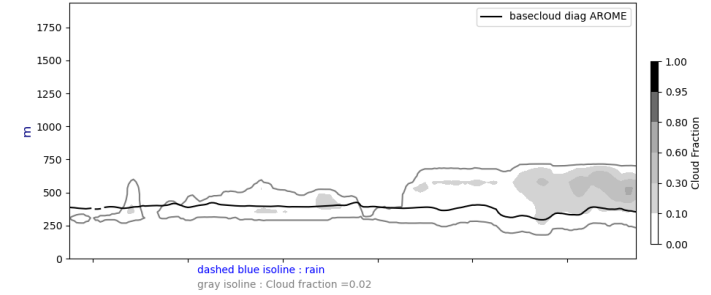
Cross section S/N @ -22W  
20240709-12-UTC ech(12h)



Cross section S/N @ -22W  
20240710-12-UTC ech(36h)



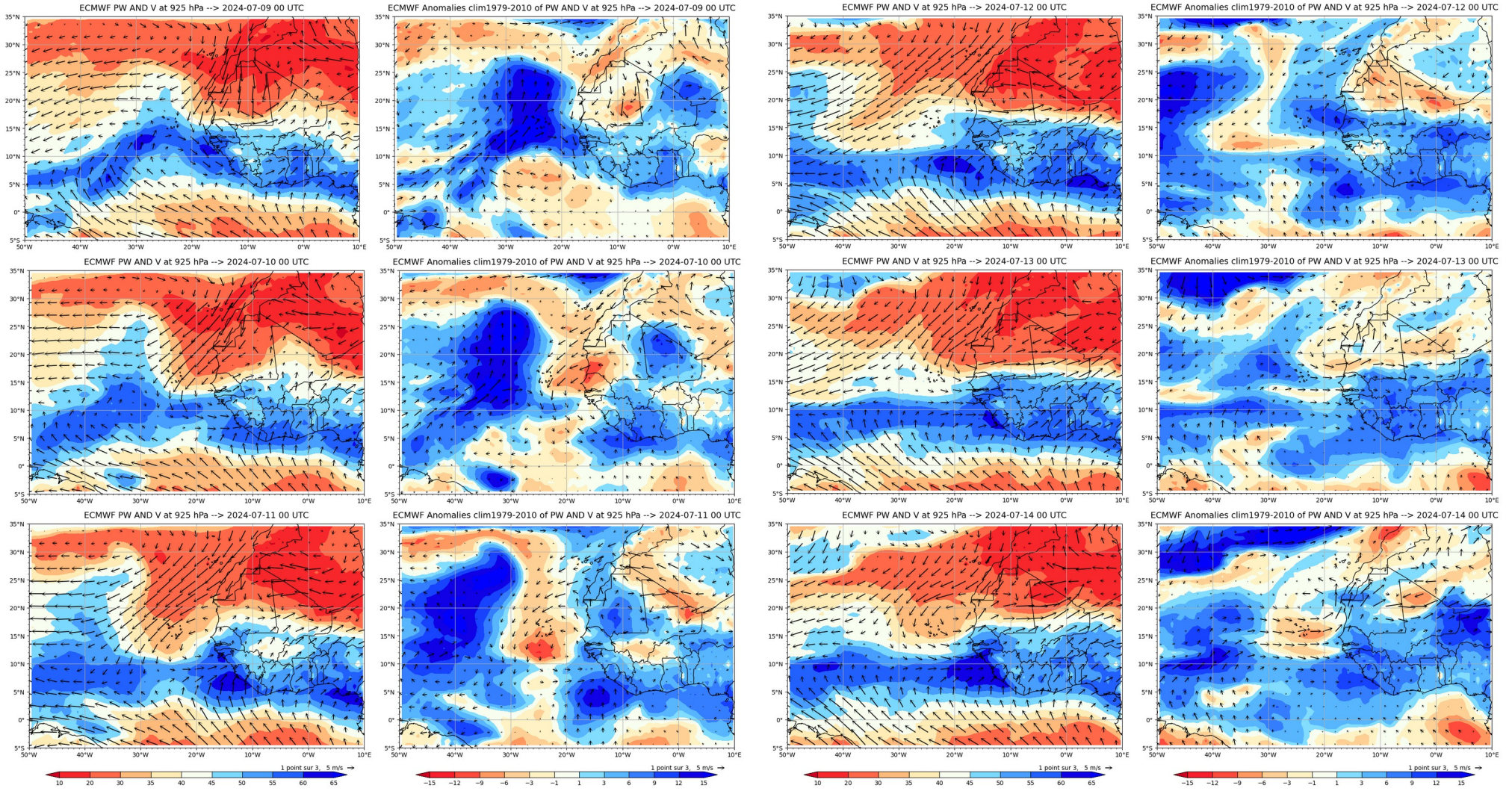
Cross section S/N @ -22W  
20240711-12-UTC ech(60h)



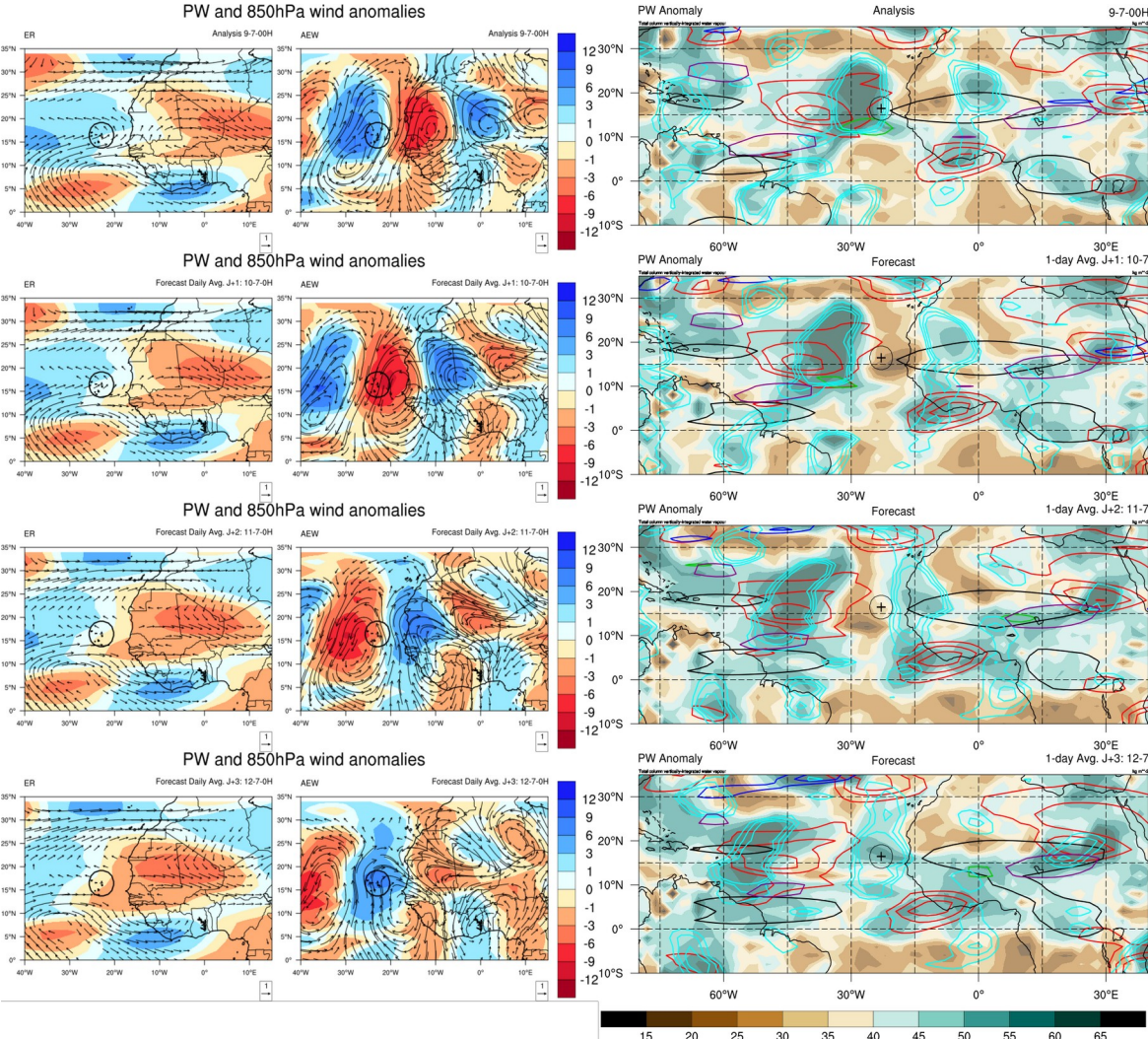


Week forecast J - J+7

# Daily PW and wind @ 925 hPa – total and anomalies

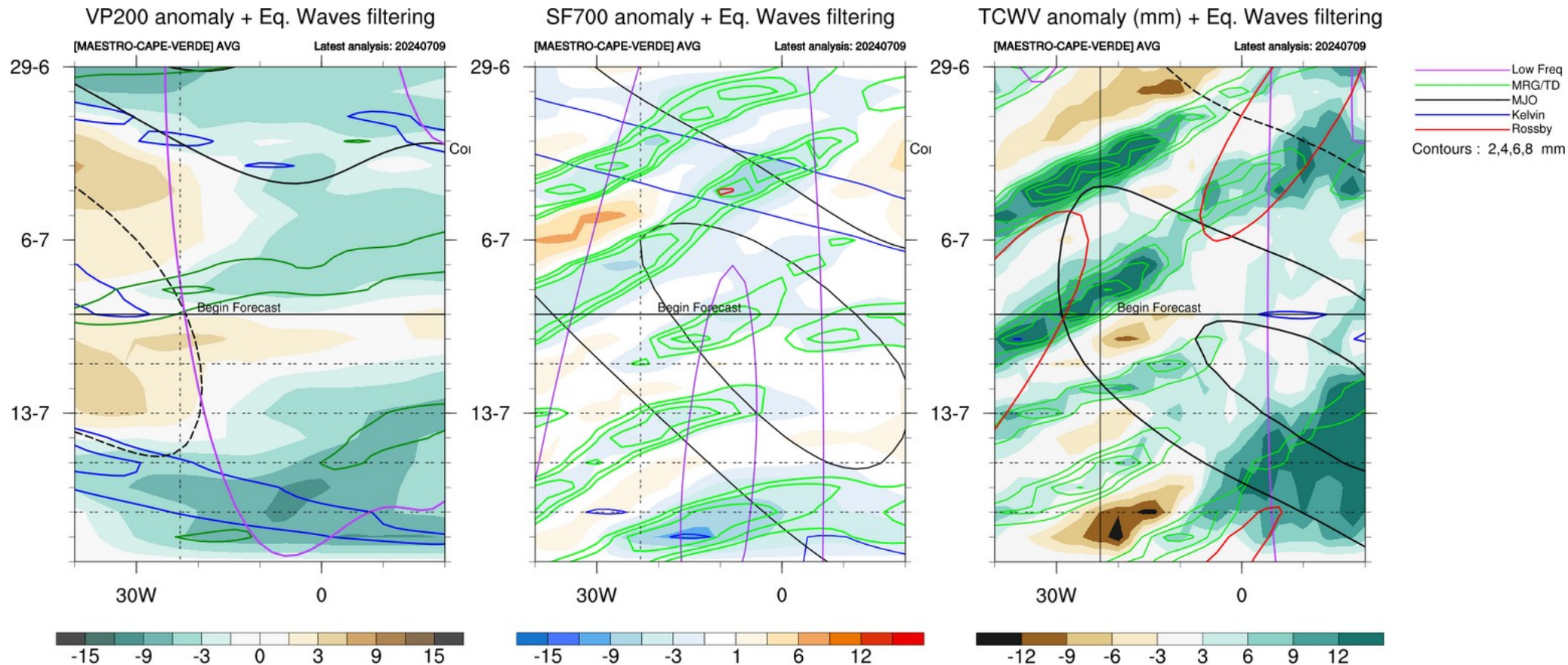


# Decomposition PW/Wind and Waves contours J to J+3



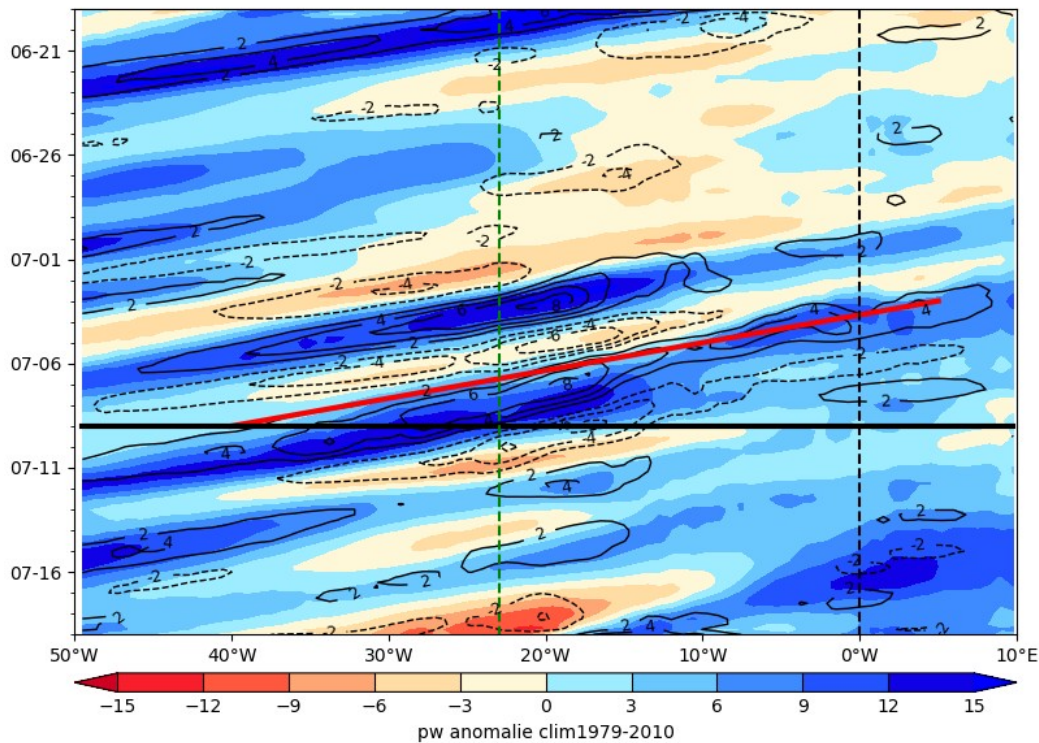
Waves : Velocity potential @ 200 hPa, day J to J+7

# Equatorial Waves filtering hovmollers

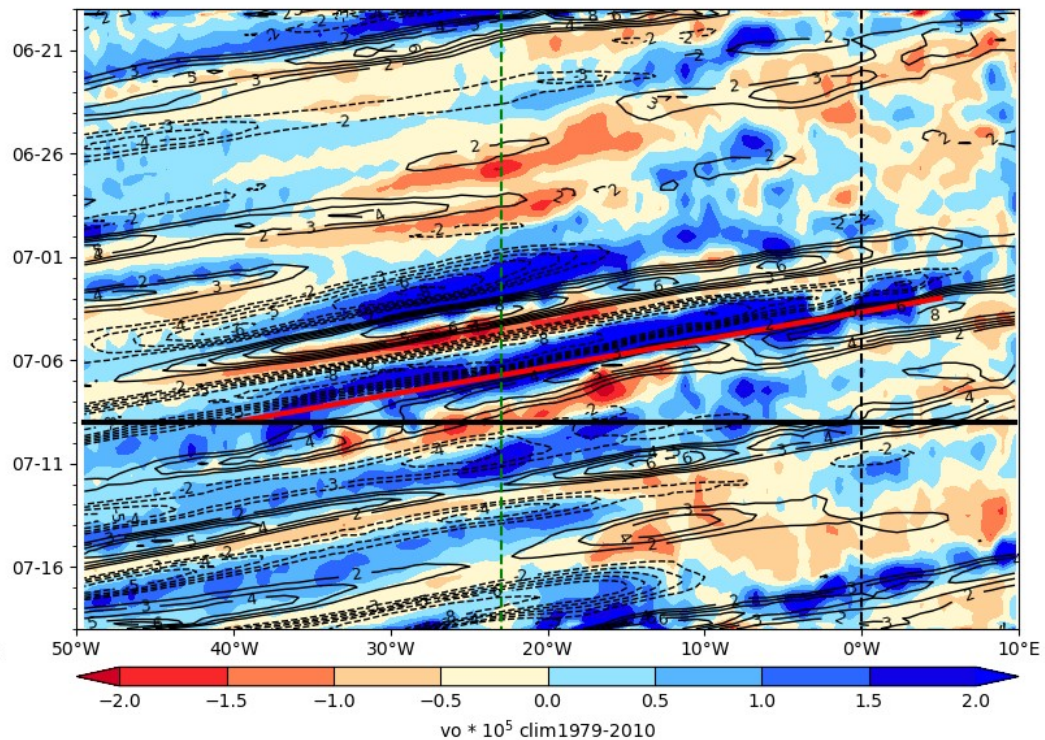


# Hovmoller anomaly

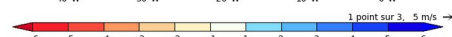
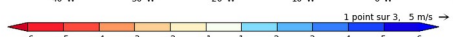
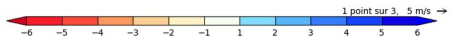
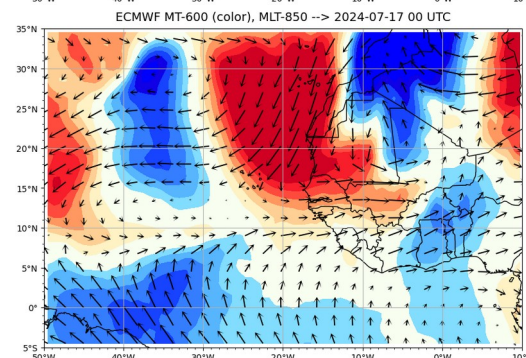
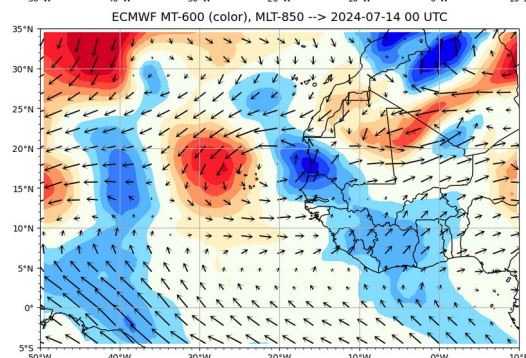
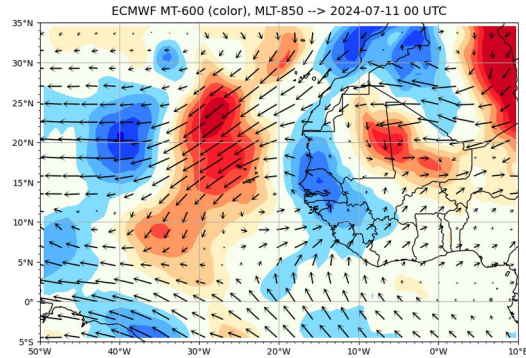
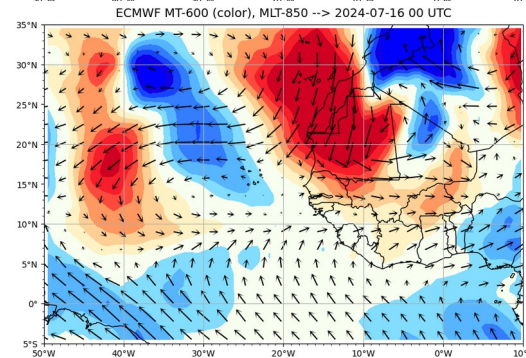
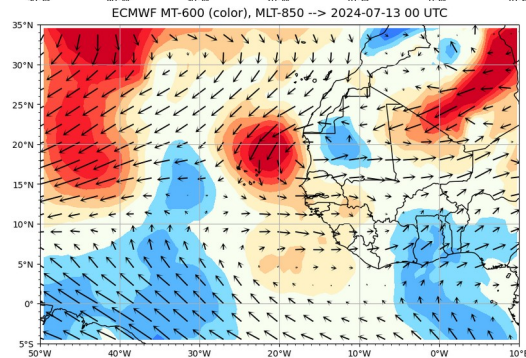
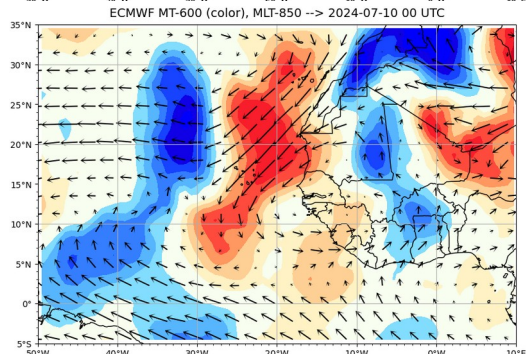
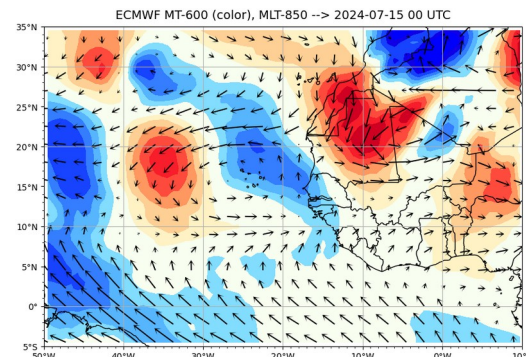
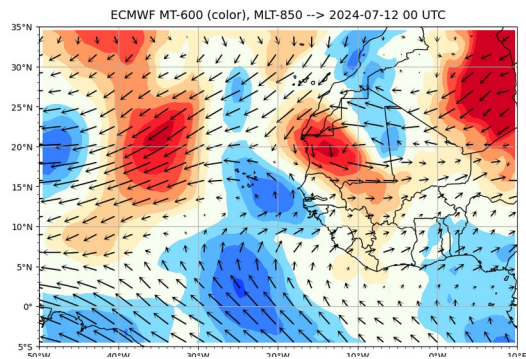
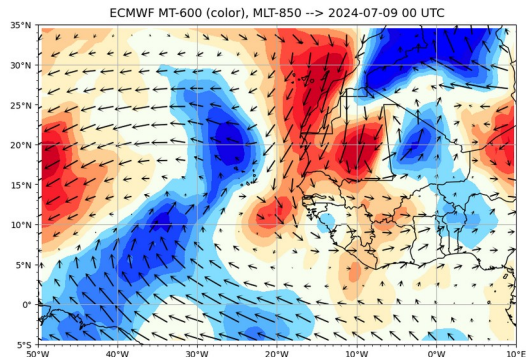
ECMWF PW (color) AND V at 925 hPa 2024-07-09



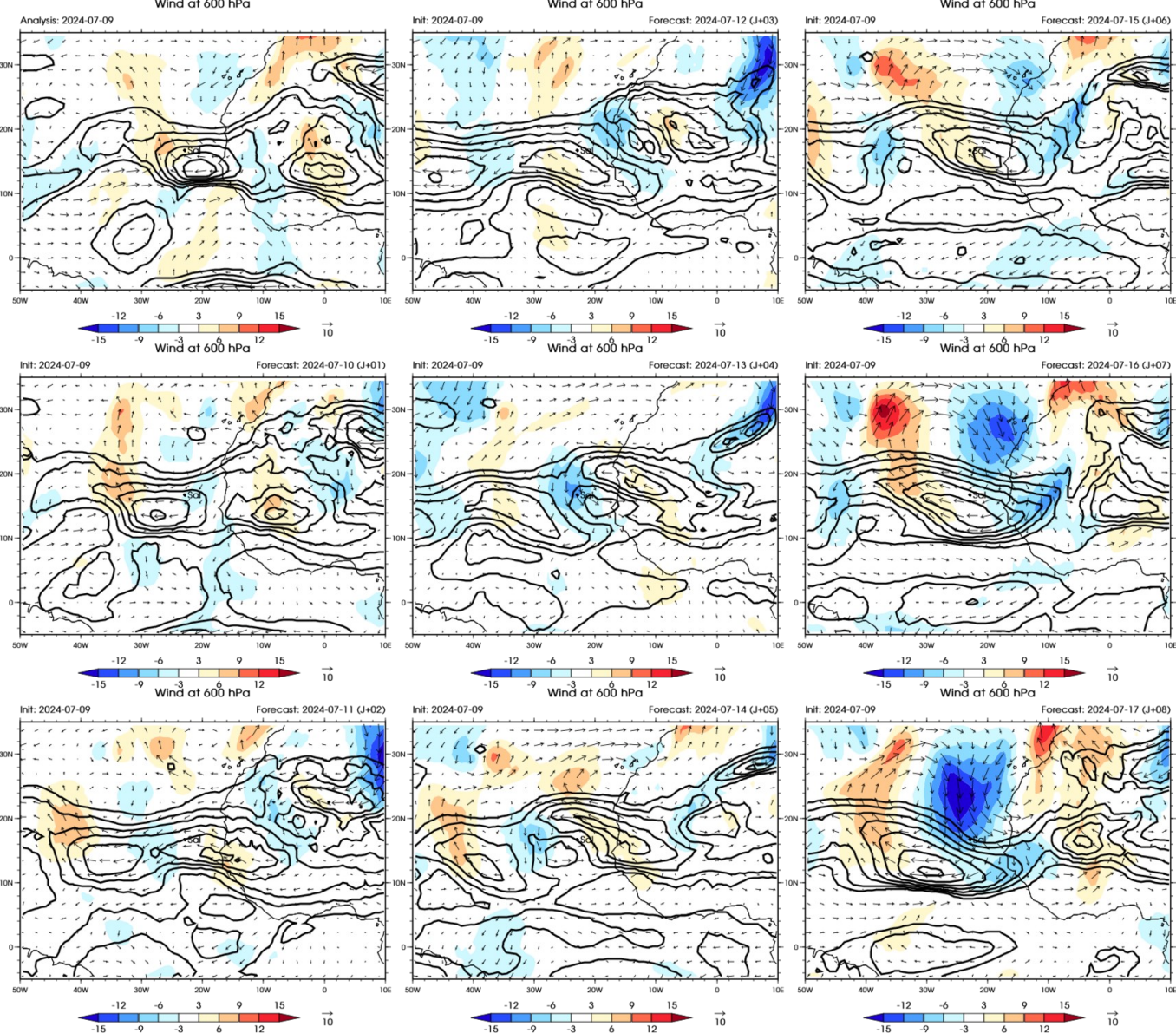
ECMWF Vorticity 850 hPa (color), V-700 hPa 2024-07-09



# Monsoon Flow



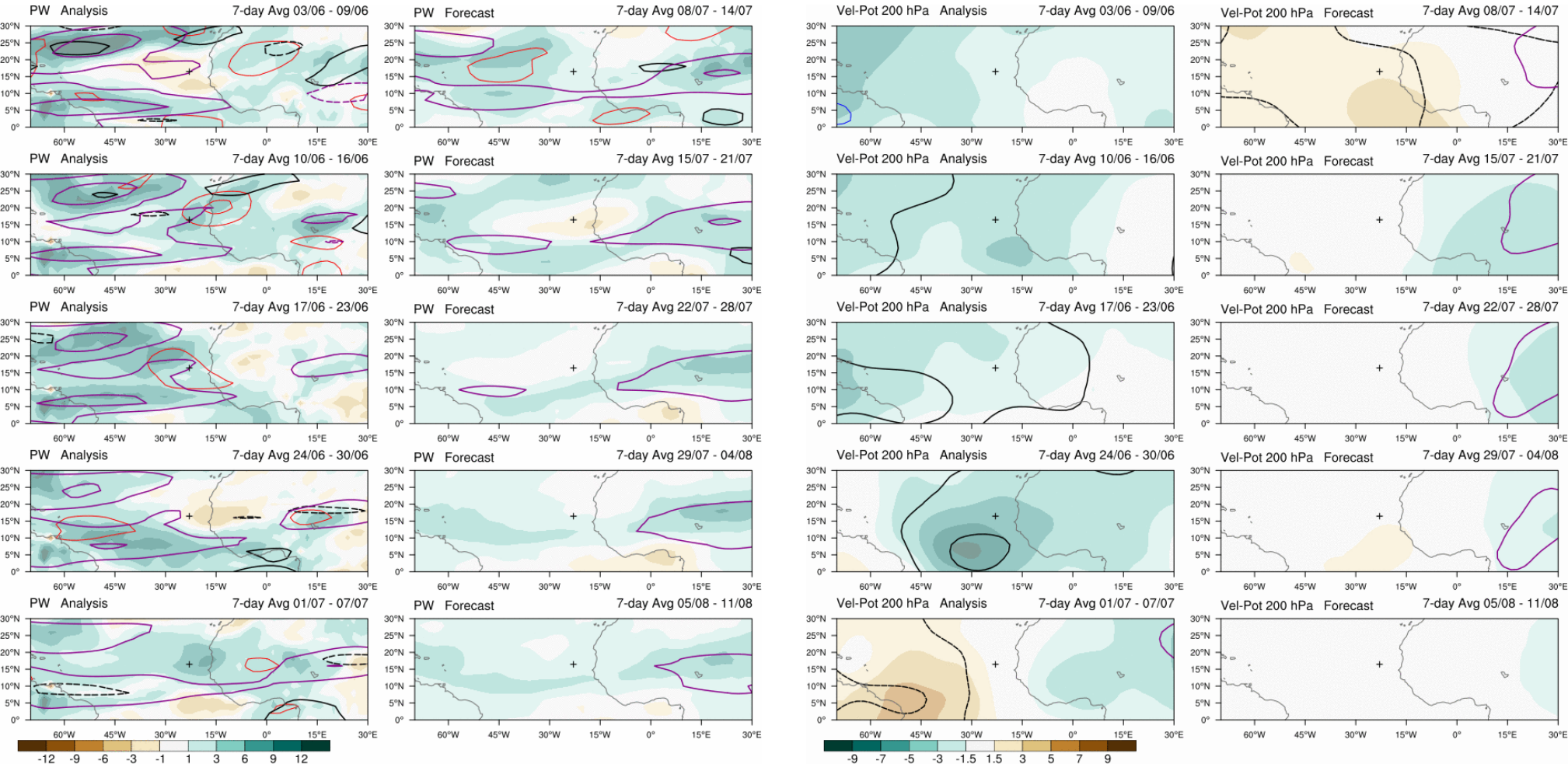
# African Easterly Jet wind 600 hPa





Subseasonal forecast  
(updated once a week)

# 4 weeks forecast PW et VP200



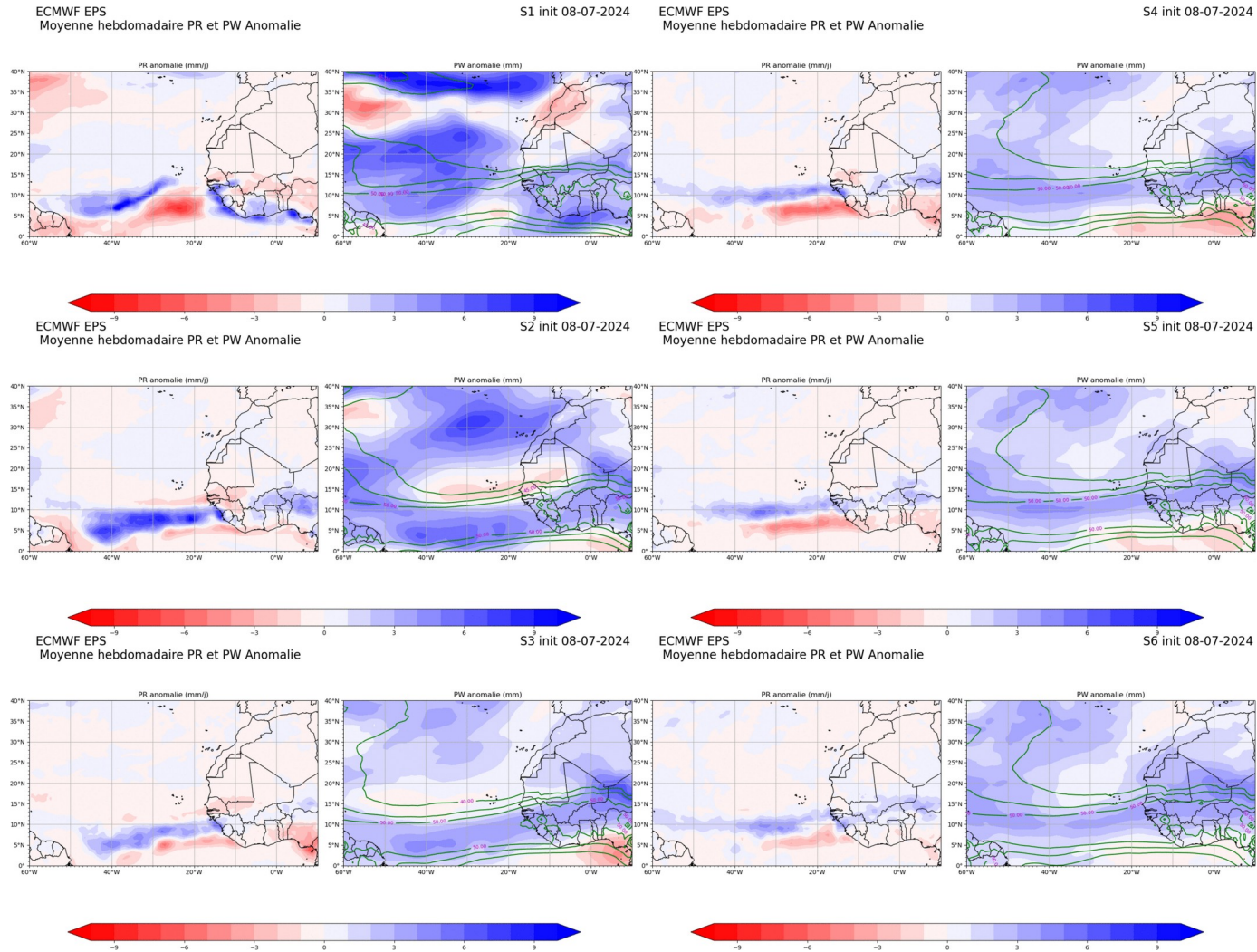
Contours: 2.5, 5, 10, mm  
 — MRG/TD  
 — Kelvin  
 — Rossby  
 — MJO  
 — Low

contact: Philippe Peyrille  
 philippe.peyrille@meteo.fr

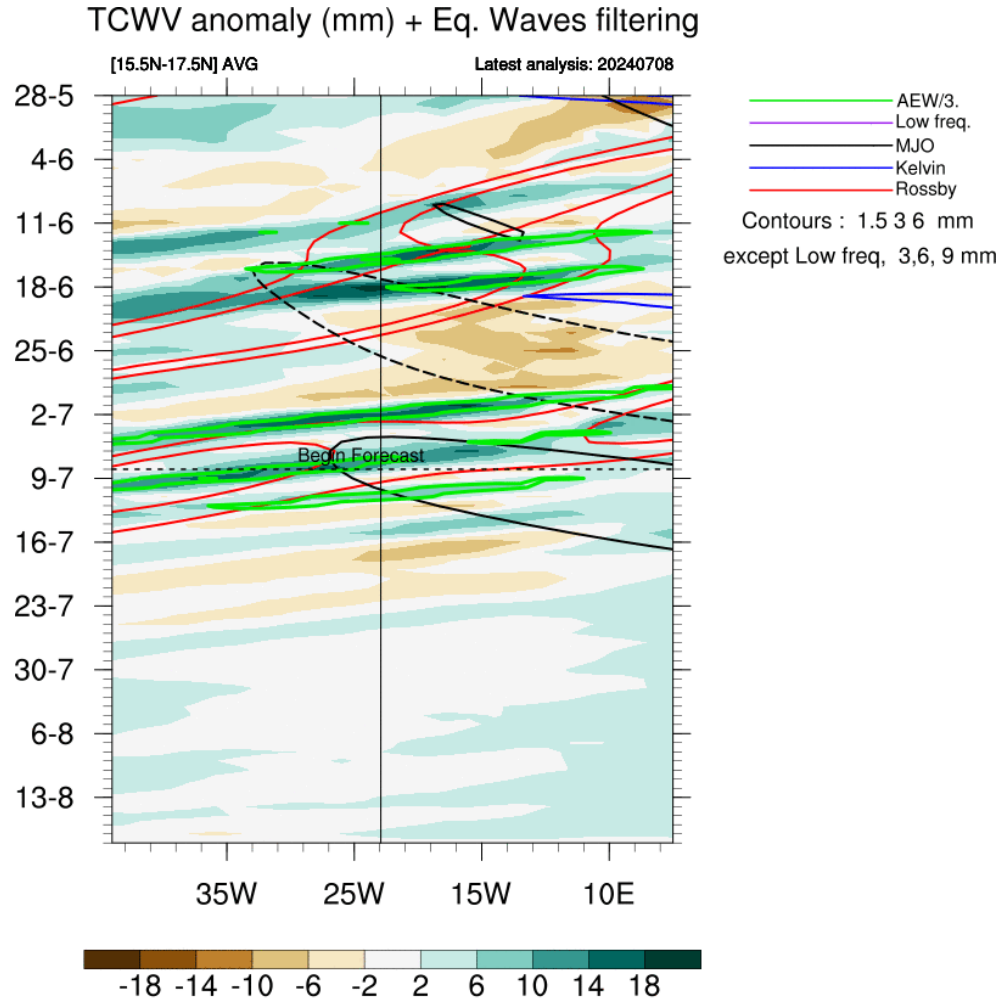
Contours: -6, -4, -2, m2s-1  
 — MRG/TD  
 — Kelvin  
 — Rossby  
 — MJO  
 — Low

contact: Philippe Peyrille  
 philippe.peyrille@meteo.fr

# Precipitation and Precipitable Water weekly anomalies + PW contours (40 mm every 5 mm)



# Hovmoller forecast PW over 4 weeks

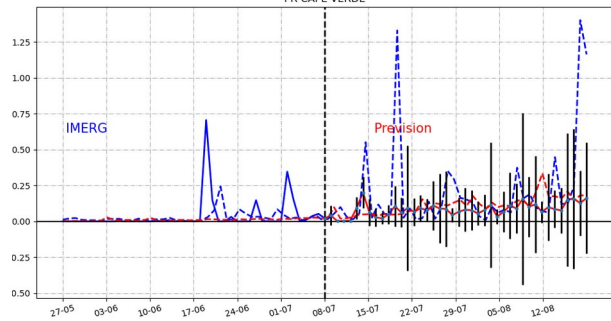


# Temporal evolution PR, PW (+ EKE)

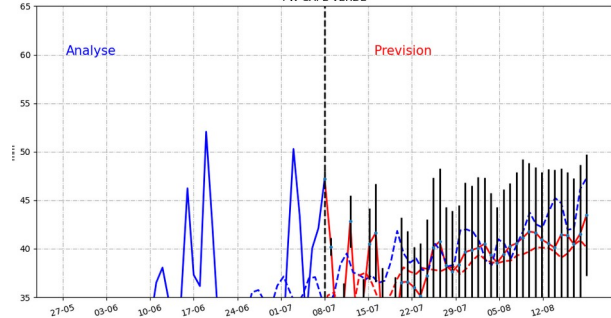
## journalier

ECMWF EPS  
init 08-07  
Moyenne journaliere PR,PW Bruts

PR CAPE-VERDE



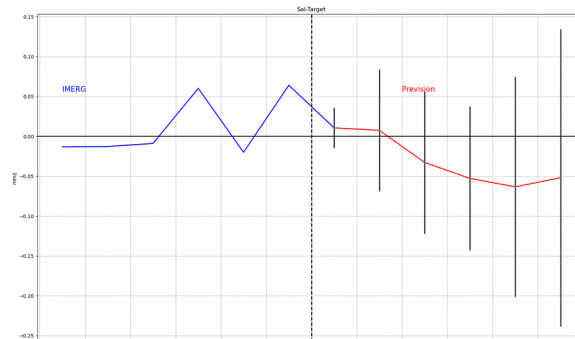
PW CAPE-VERDE



## hebdomadaire

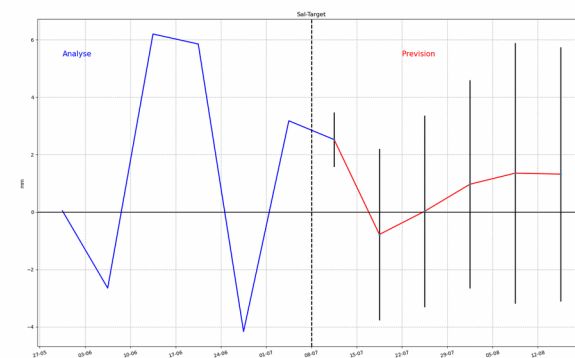
ECMWF EPS  
Moyenne hebdomadaire PR Anomalie

init 08-07



ECMWF EPS  
Moyenne hebdomadaire PW Anomalie

init 08-07



## Summary

Param	J	J+1	J+2	J+3	J+4	J+5	Wave
PW/ PW*							
VP200							
VV 500							
vorticity							
Wind @ 700 hPa (m/s)							
PBL height (m)							
Base cloud (m)							
Orga cloud							

