

DAILY SUMMARY MAESTRO

Four parts :

- 1. Evaluation J-1
- 2. Short term forecast J-J+36h
- 3. Week forecast J-J+7
- 4. Subseasonal forecast

Anasyg J-1 12 UTC et J 00 UTC

Anasyg J-1 18 UTC et J 06 UTC

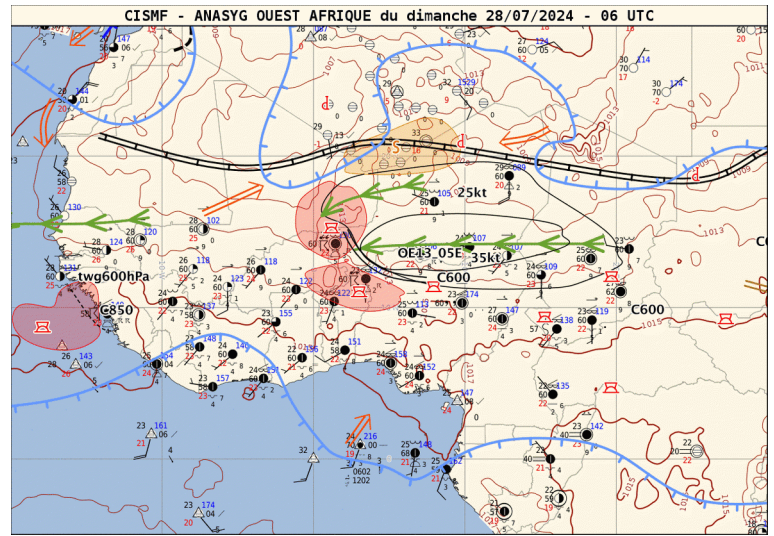
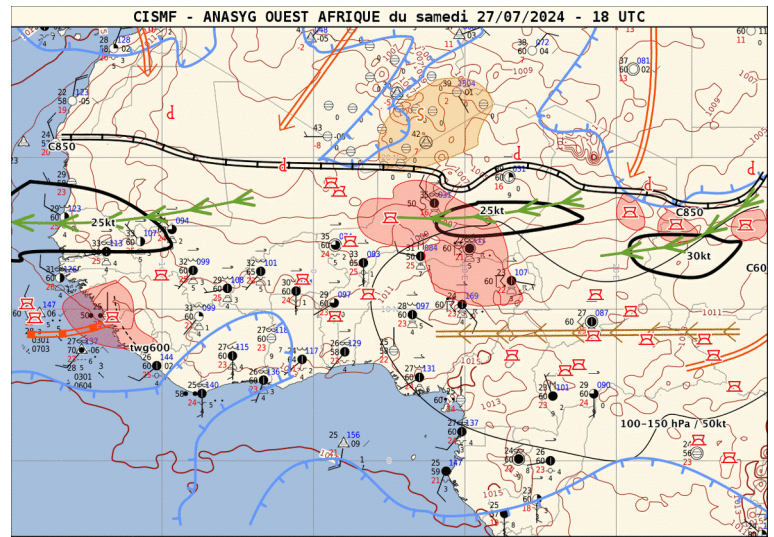
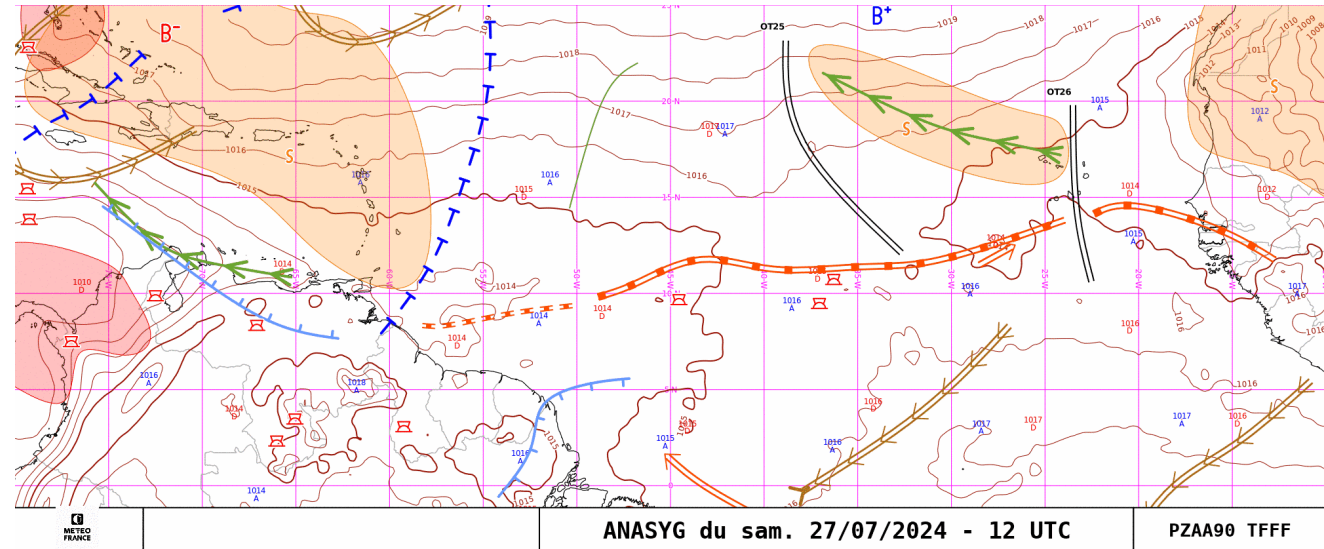
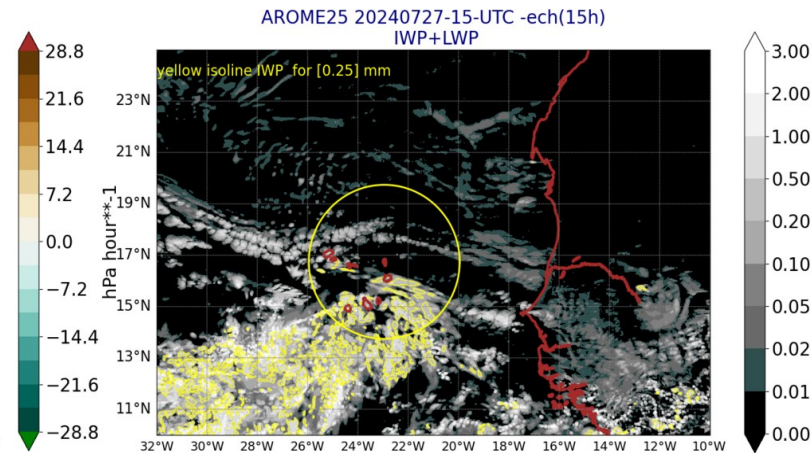
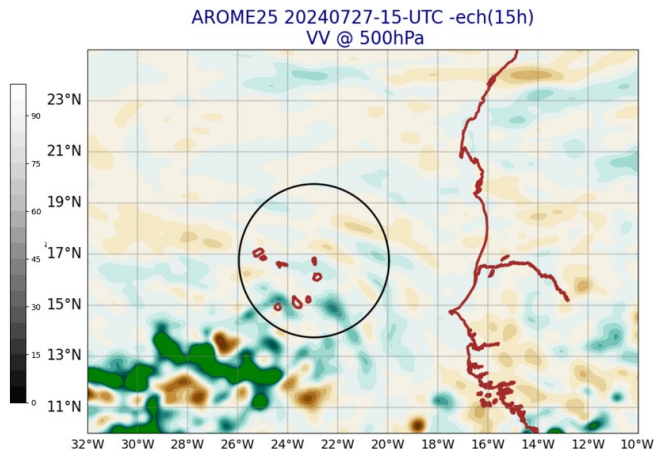
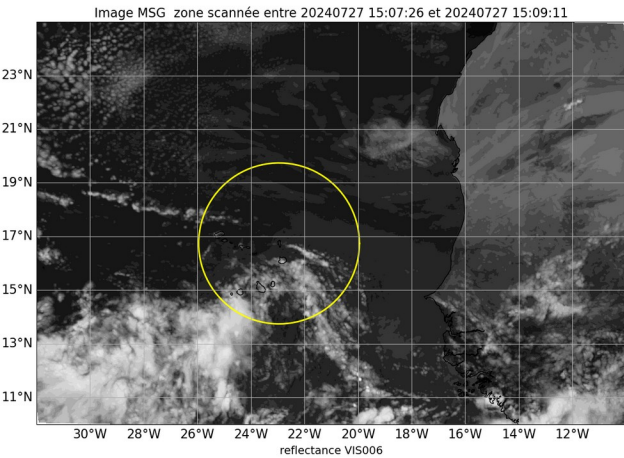
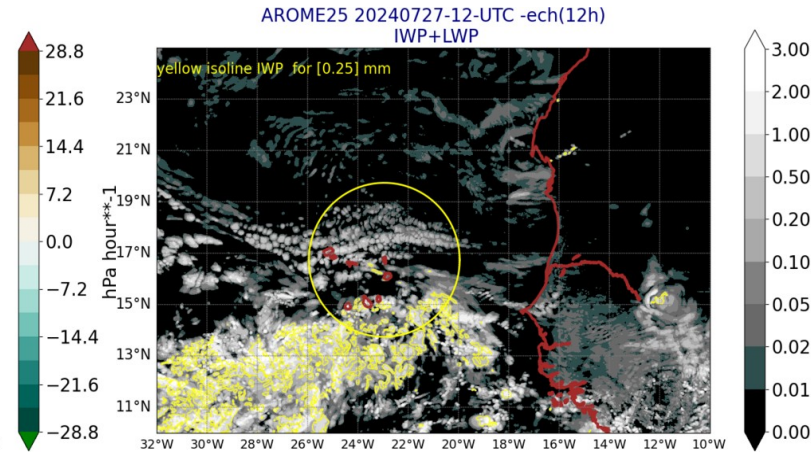
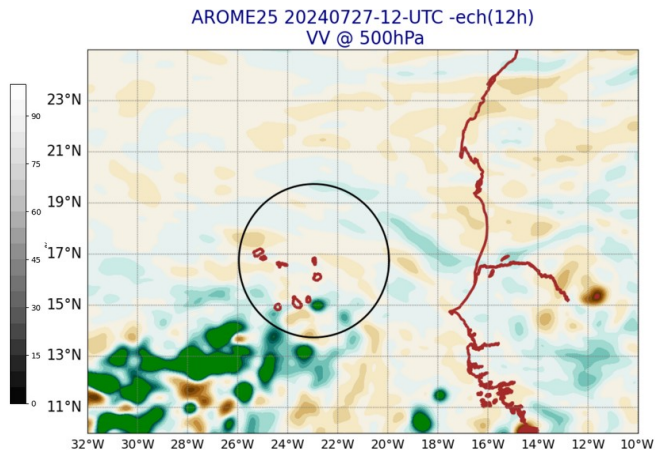
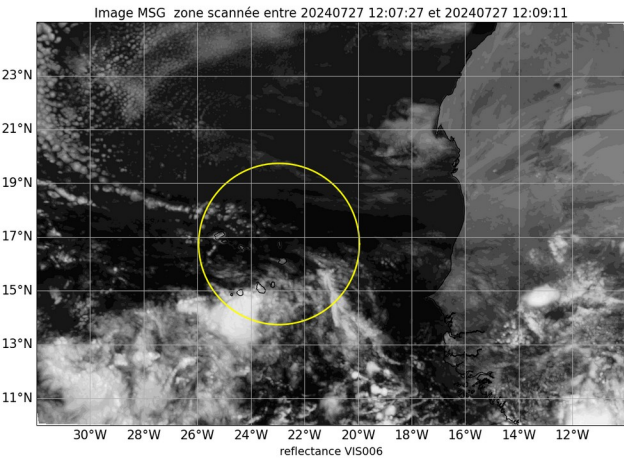


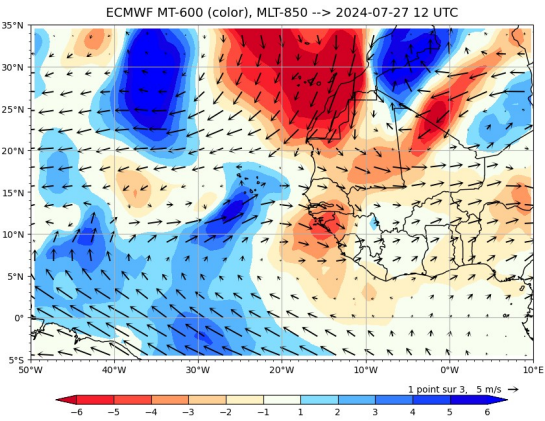
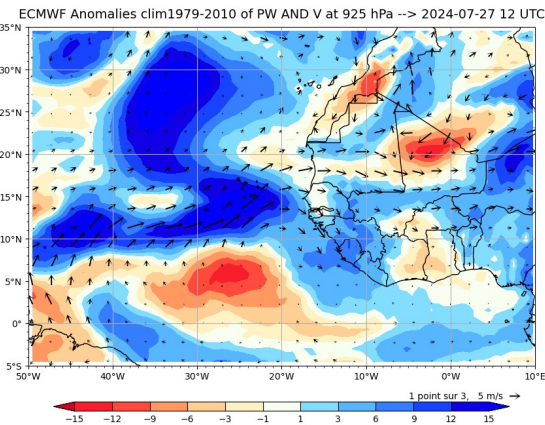
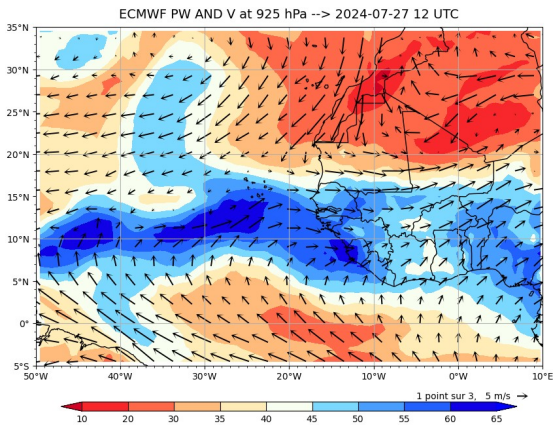
Image MSG Visible J-1 12 and 15 UTC

Arome J-1 12 and 15 UTC

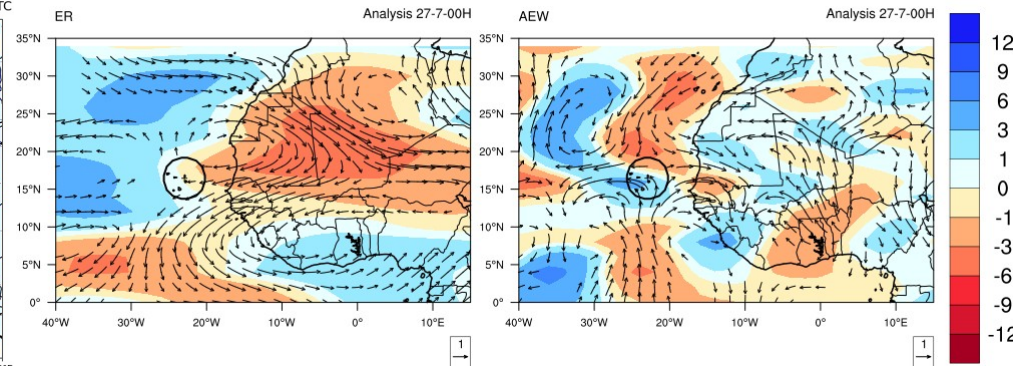


Precipitable Water - Merid. Transport J-1 12UTC

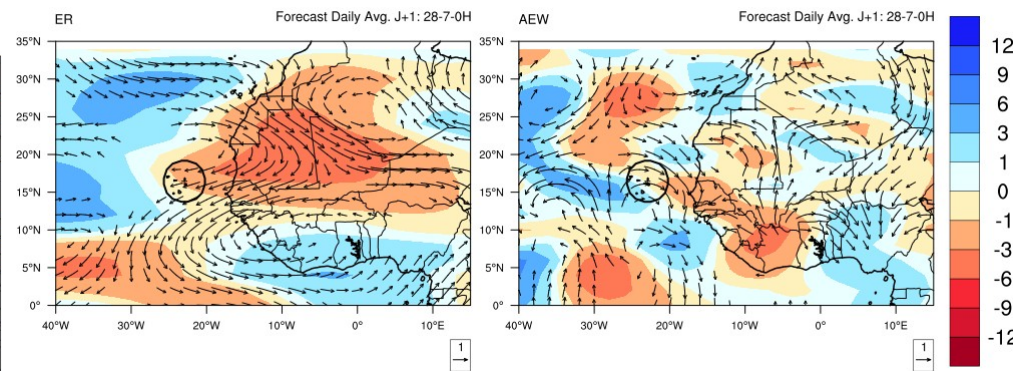
Waves J-1 00 UTC and J 00UTC



PW and 850hPa wind anomalies



PW and 850hPa wind anomalies

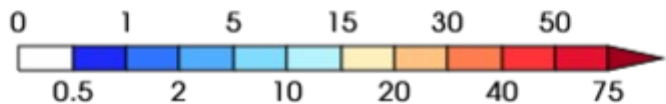
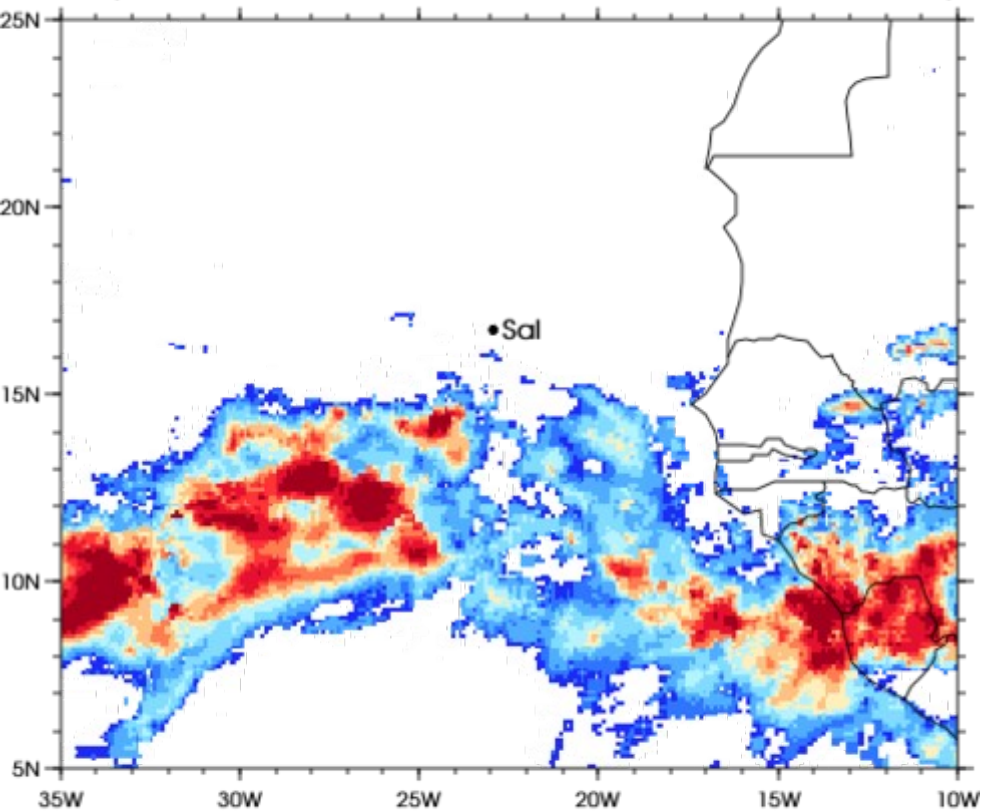


Precipitation IMERG and AROME J-1

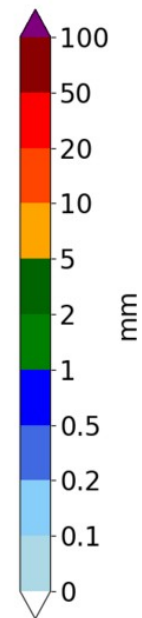
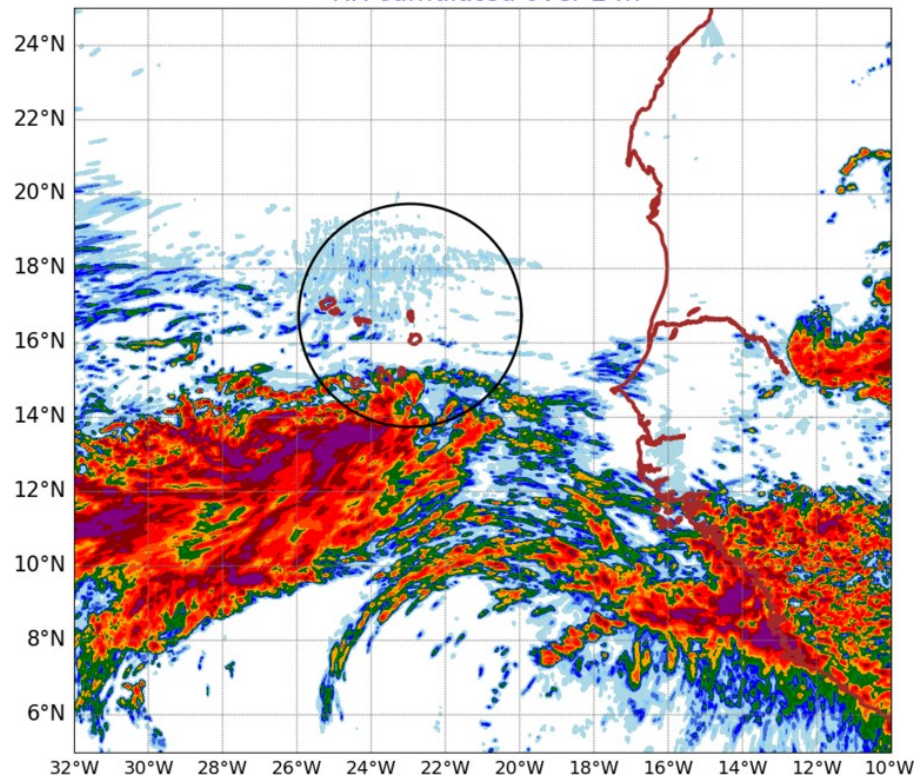
3IMERGHHE GPM IMERG Early Precipitation

Daily accumulated: 2024-07-27

Units: mm/day

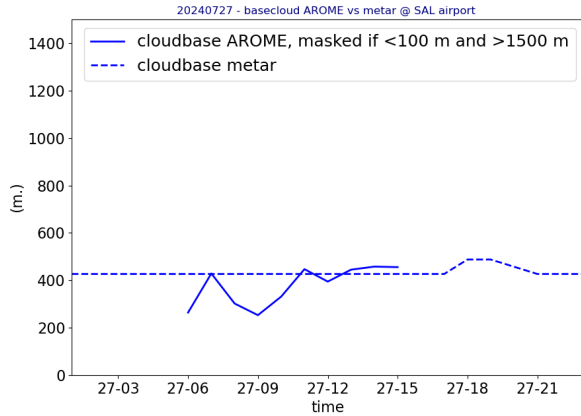
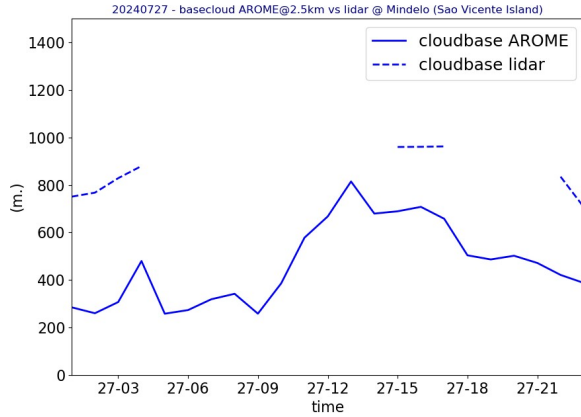


AROME25 20240728-00-UTC -ech(24h)
RR cumulated over 24h

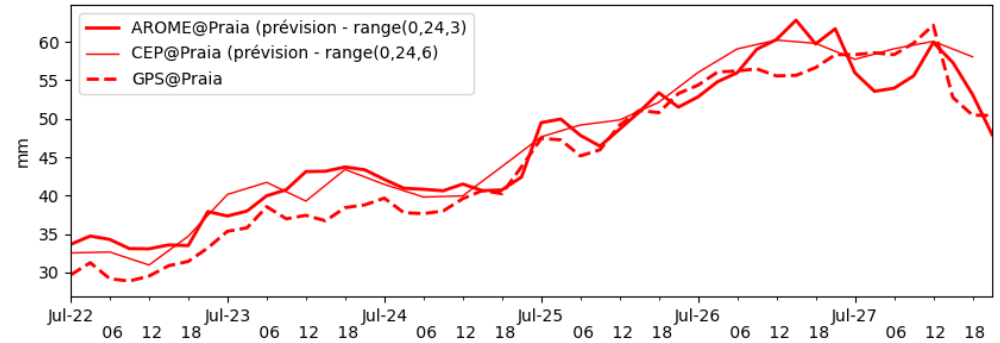
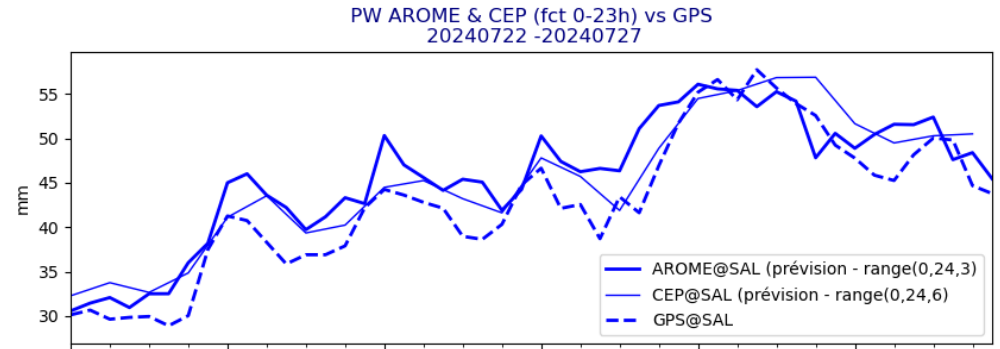


OBSERVATIONS J-1

Lidar@ mindelo
metar@sal



GPS @ Sal
GPS @ Praia



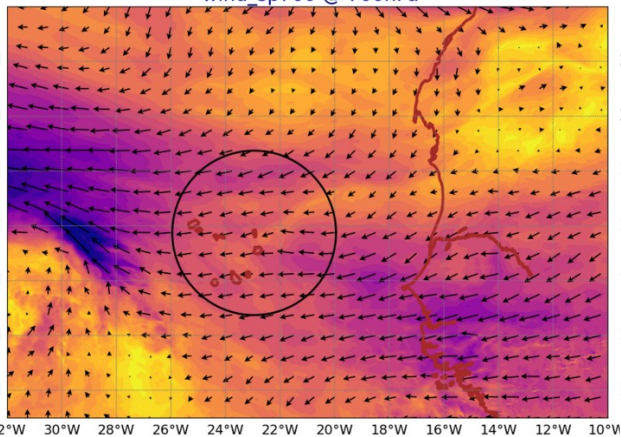
Short term forecast J - J+36h

Temporal evolution PW Sal et Dakar + EKE

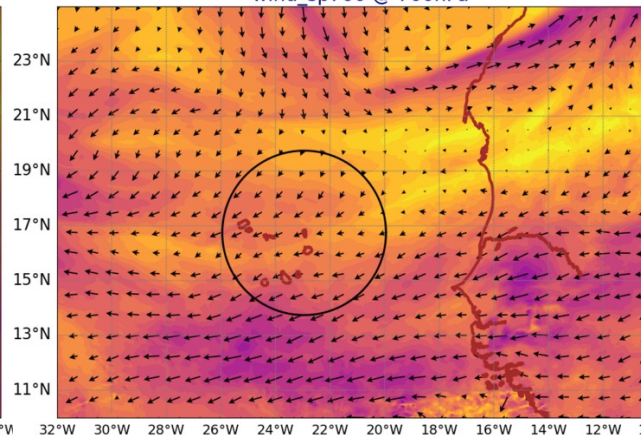
AROME Wind @ 700 hPa

AROME Wind @ 920 hPa

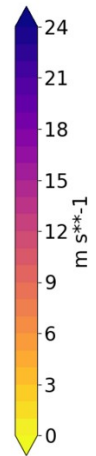
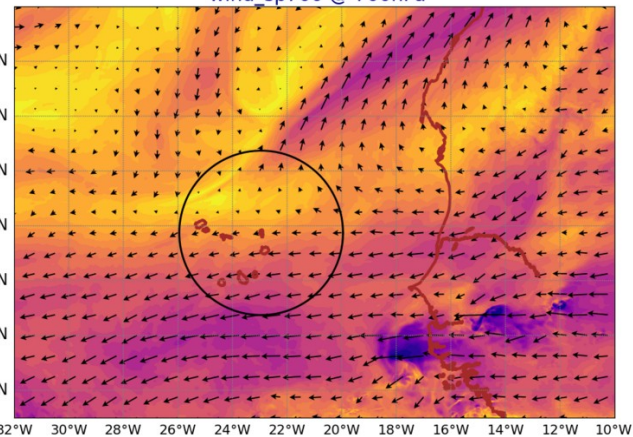
AROME25 20240728-12-UTC -ech(12h)
wind_sp700 @ 700hPa



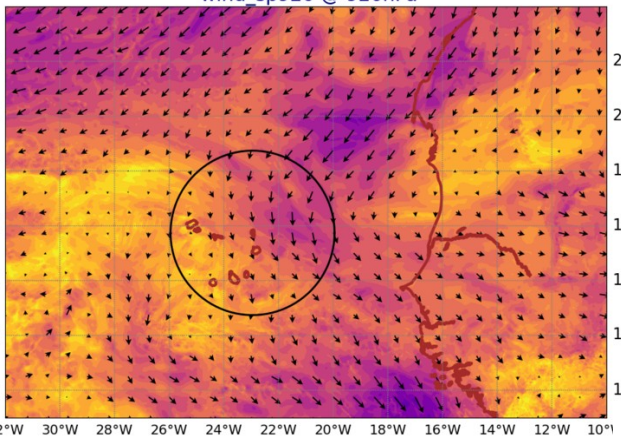
AROME25 20240729-12-UTC -ech(36h)
wind_sp700 @ 700hPa



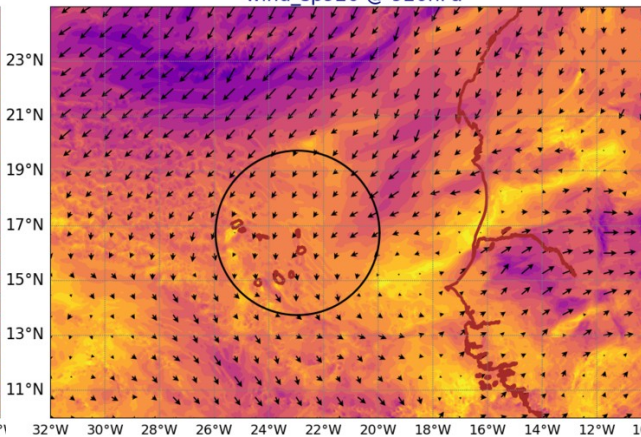
AROME25 20240730-12-UTC -ech(60h)
wind_sp700 @ 700hPa



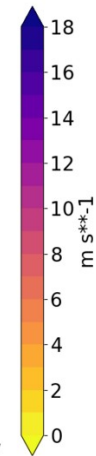
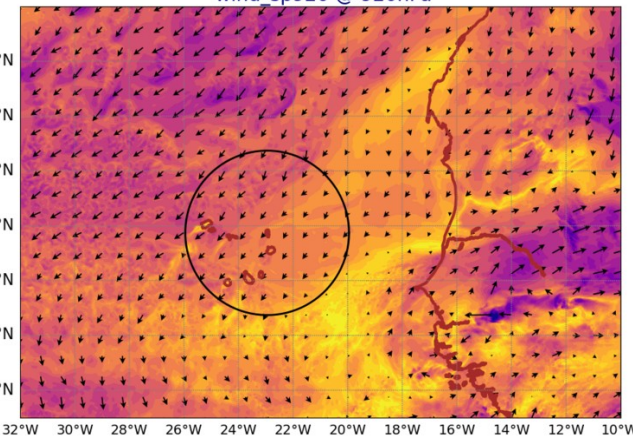
AROME25 20240728-12-UTC -ech(12h)
wind_sp920 @ 920hPa



AROME25 20240729-12-UTC -ech(36h)
wind_sp920 @ 920hPa



AROME25 20240730-12-UTC -ech(60h)
wind_sp920 @ 920hPa



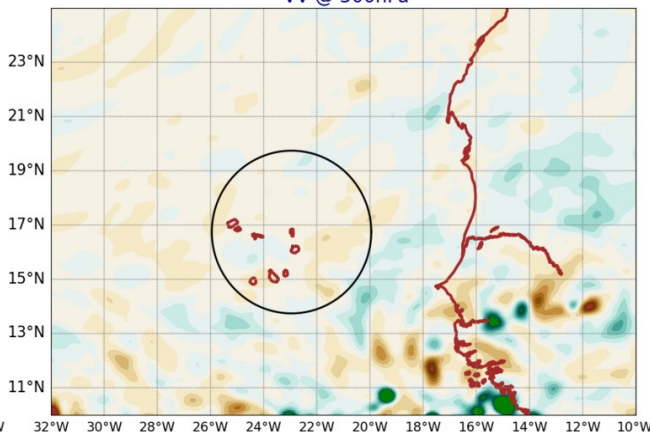
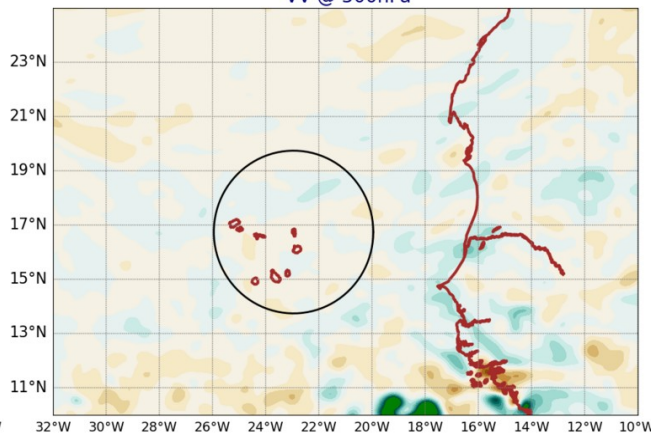
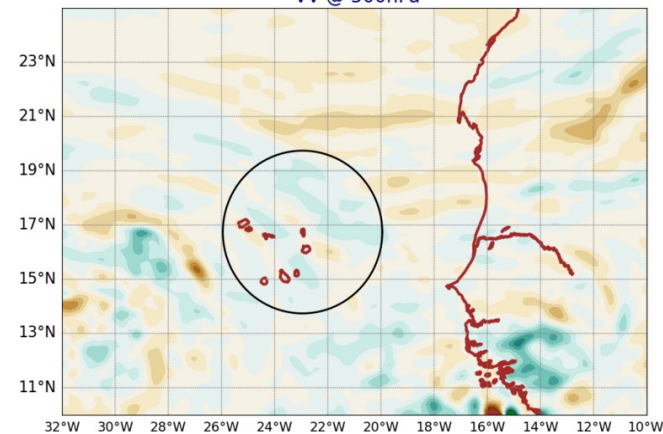
AROME VV @ 500hPa

AROME LWP+IWP

AROME25 20240728-12-UTC -ech(12h)
VV @ 500hPa

AROME25 20240729-12-UTC -ech(36h)
VV @ 500hPa

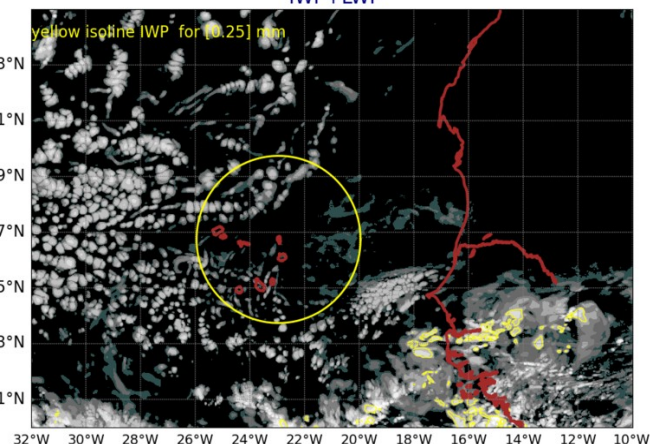
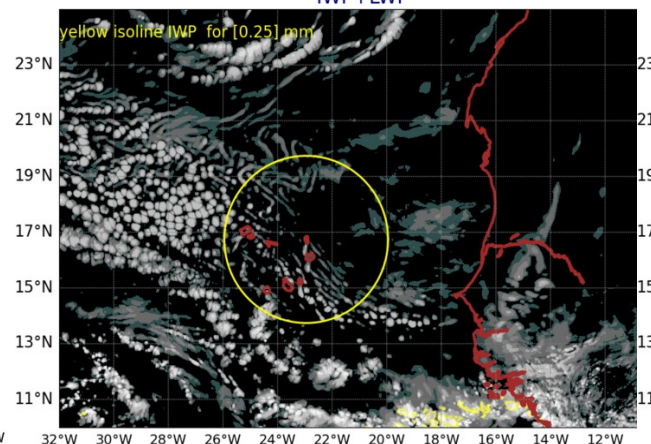
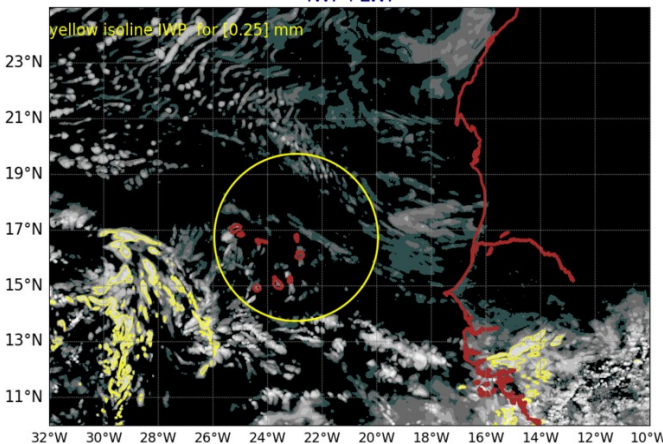
AROME25 20240730-12-UTC -ech(60h)
VV @ 500hPa



AROME25 20240728-12-UTC -ech(12h)
IWP+LWP

AROME25 20240729-12-UTC -ech(36h)
IWP+LWP

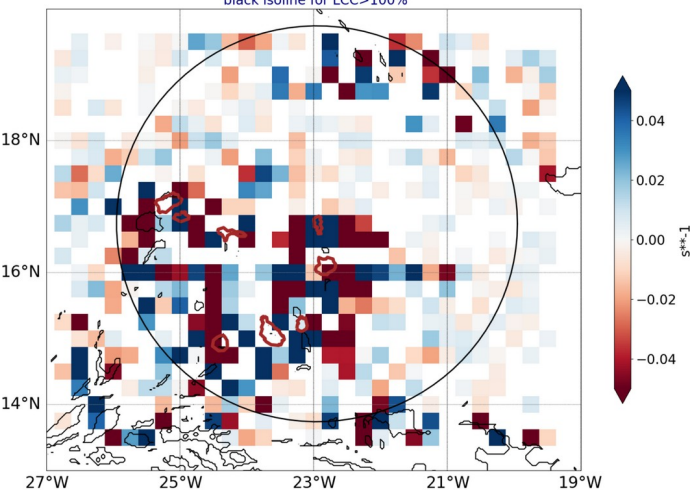
AROME25 20240730-12-UTC -ech(60h)
IWP+LWP



Smoc

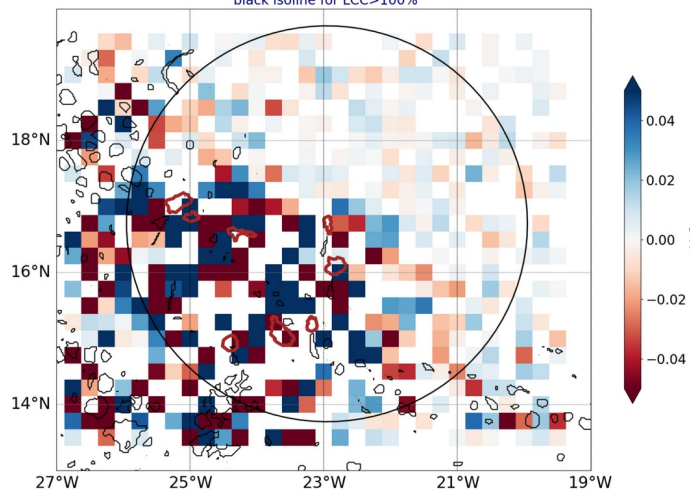
-blue for conv in subcloud layer-
dark isoline for low cloud cover

AROME25 regrid 0.25
20240728-12-UTC -ech(12h)
blue for conv in subcloud layer
black isoline for LCC>100%



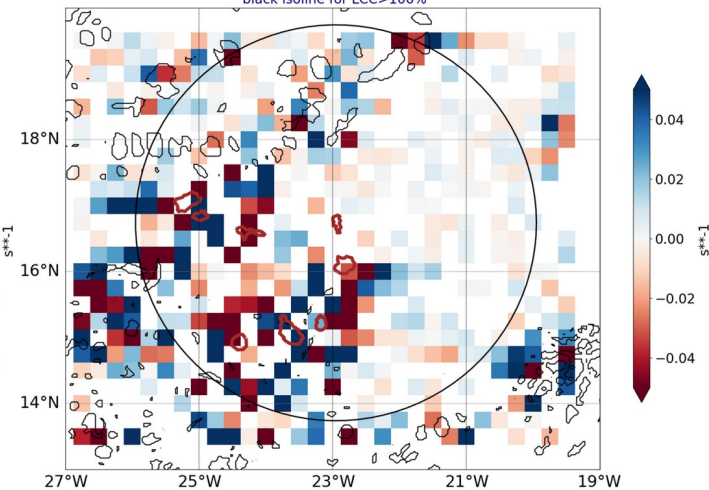
white box where subcloud and cloud layer have same sign of div

AROME25 regrid 0.25
20240729-12-UTC -ech(36h)
blue for conv in subcloud layer
black isoline for LCC>100%



white box where subcloud and cloud layer have same sign of div

AROME25 regrid 0.25
20240730-12-UTC -ech(60h)
blue for conv in subcloud layer
black isoline for LCC>100%



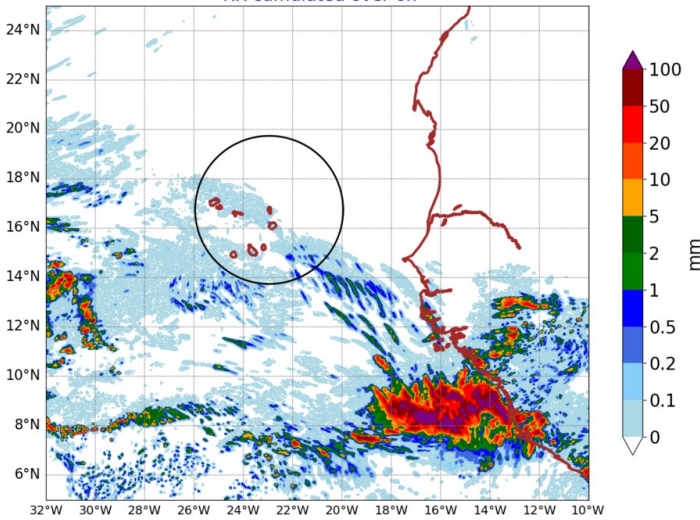
white box where subcloud and cloud layer have same sign of div

over 6h ech 12h and 15h

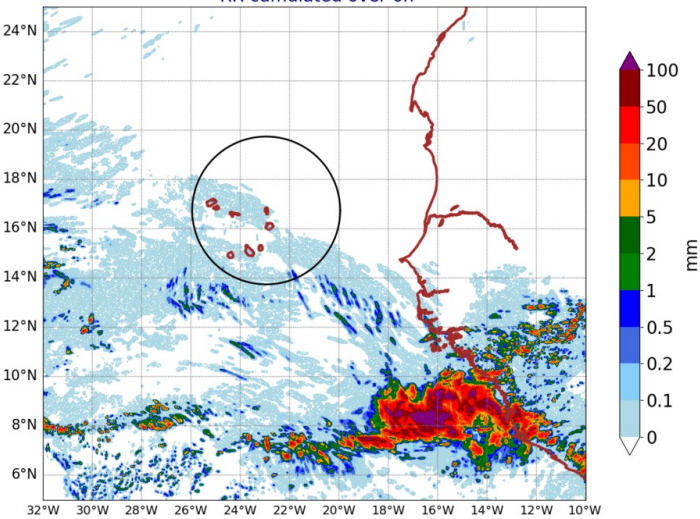
AROME precipitation

over 24h ech 36h and 60h

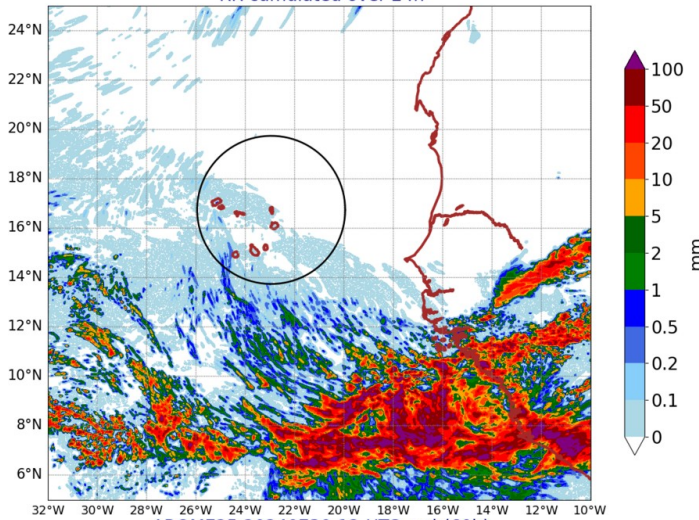
AROME25 20240728-12-UTC -ech(12h)
RR cumulated over 6h



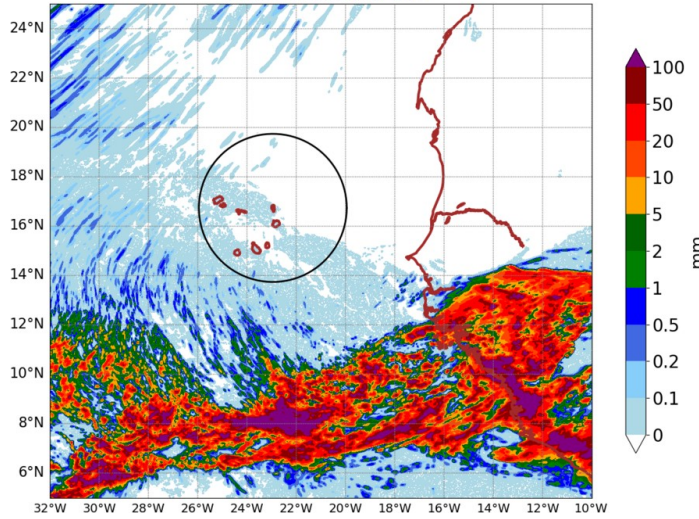
AROME25 20240728-15-UTC -ech(15h)
RR cumulated over 6h



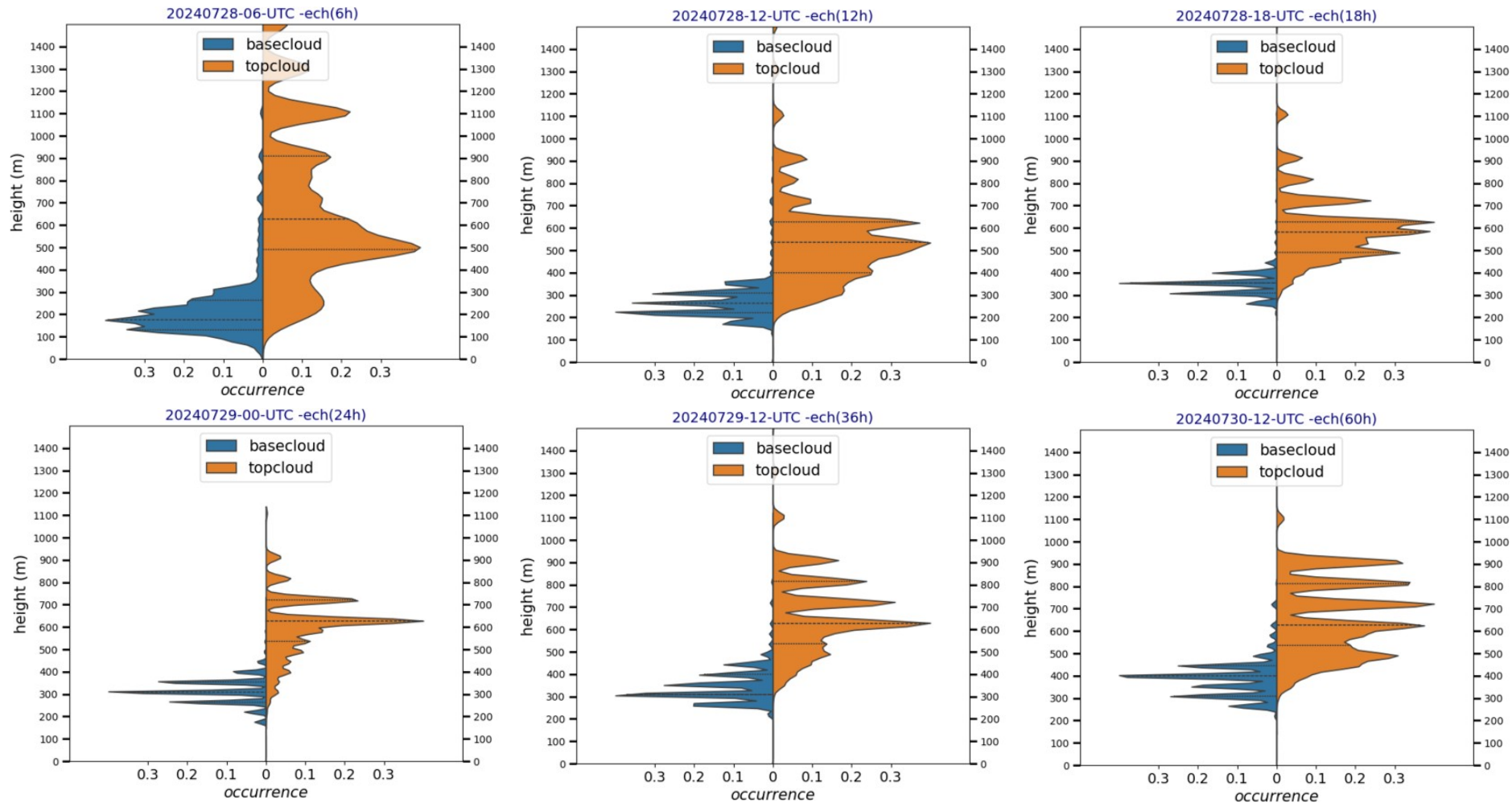
AROME25 20240729-12-UTC -ech(36h)
RR cumulated over 24h



AROME25 20240730-12-UTC -ech(60h)
RR cumulated over 24h

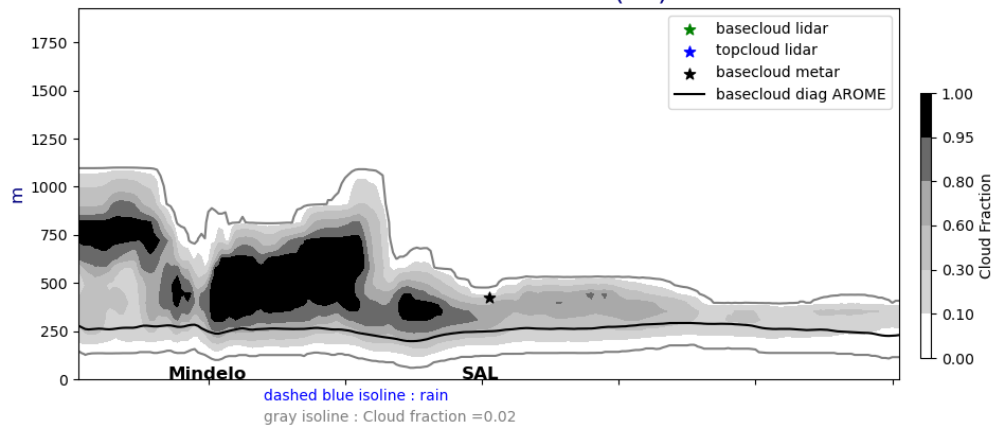


AROME base and top cloud (mean in the 3° circle)

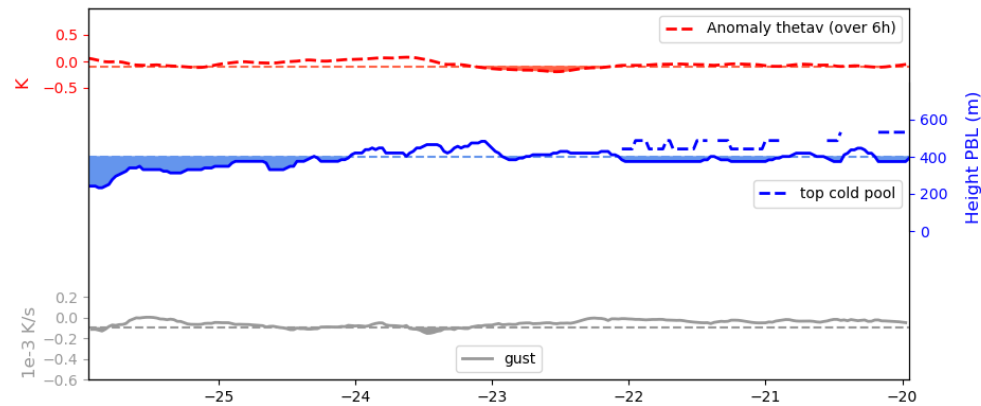
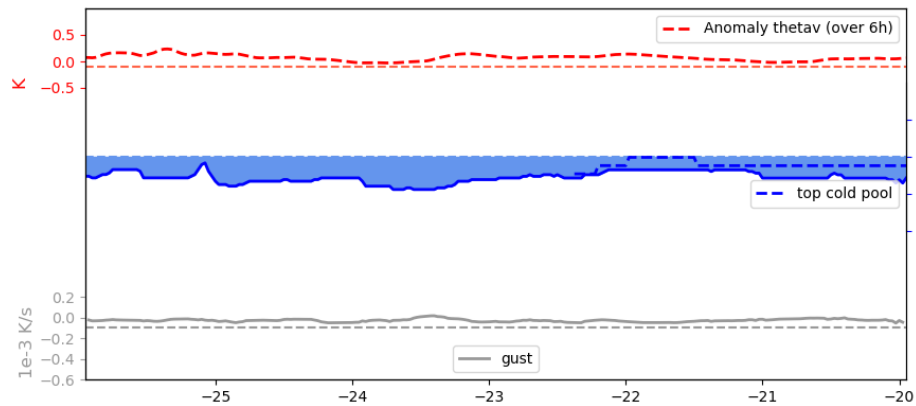
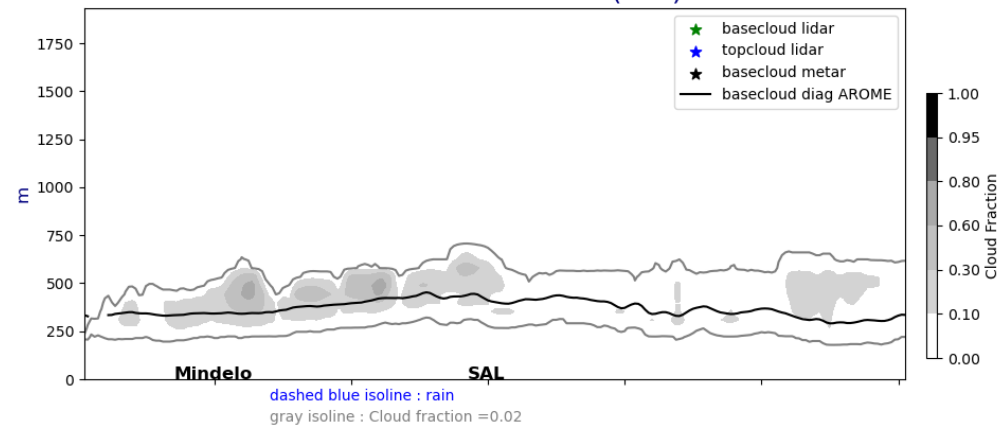


Lat. cross section @17°5N fct : 01UTC, 12UTC

Cross section E/W @ 17.5N
20240728-01-UTC ech(1h)

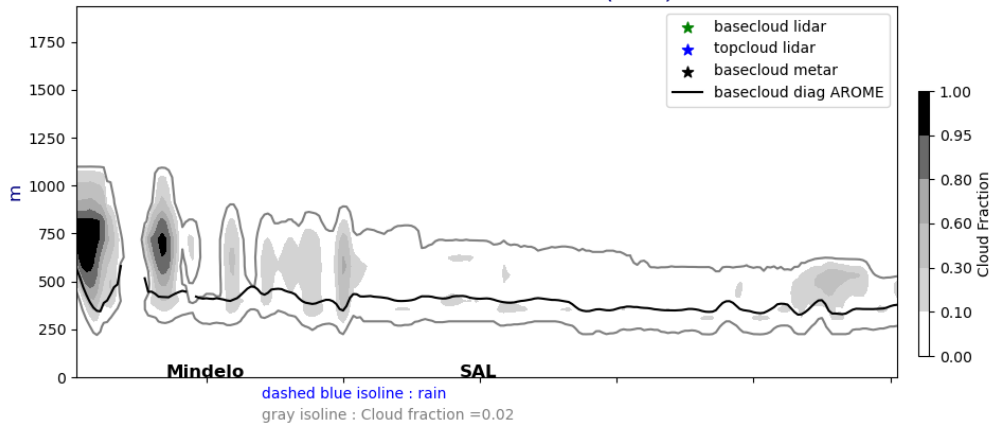


Cross section E/W @ 17.5N
20240728-12-UTC ech(12h)

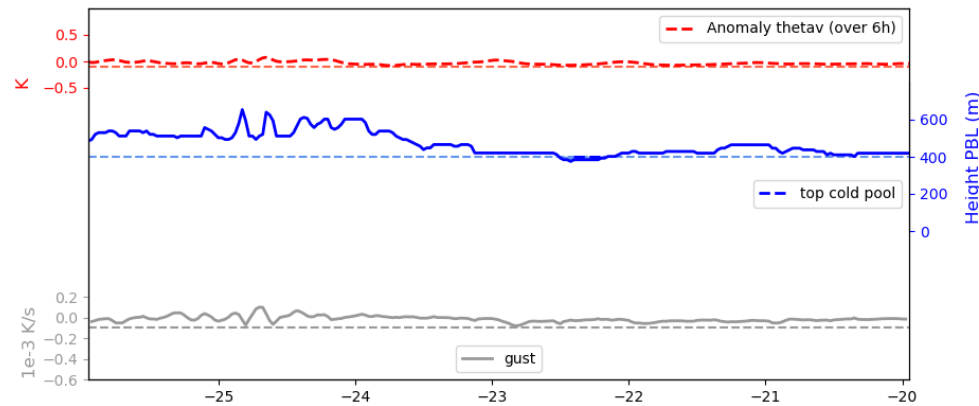
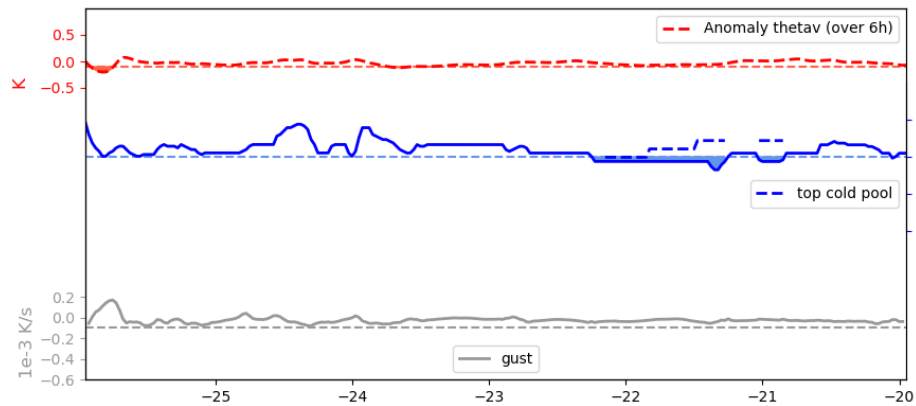
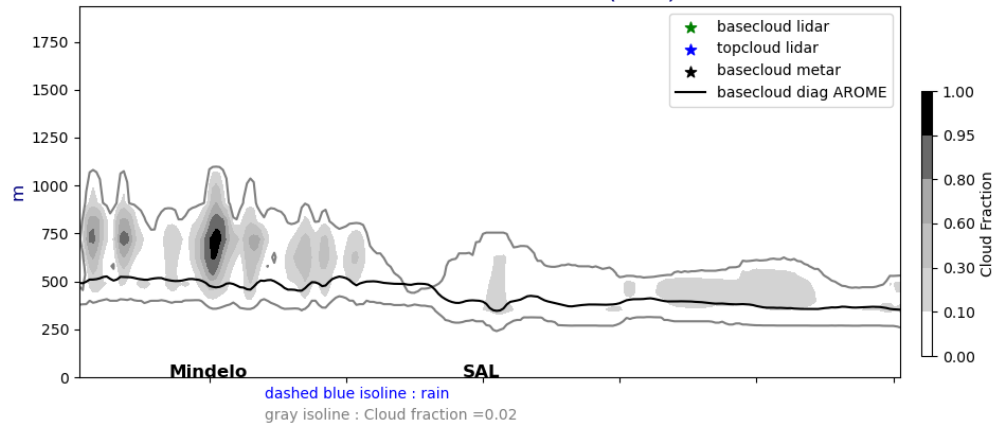


Lat. cross section @17°5N fct : J+1 and J+2 @ 12UTC

Cross section E/W @ 17.5N
20240729-12-UTC ech(36h)

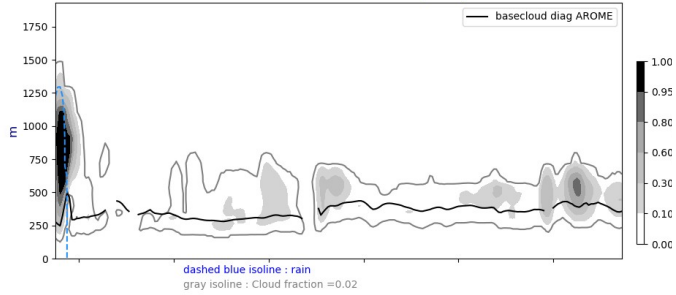


Cross section E/W @ 17.5N
20240730-12-UTC ech(60h)

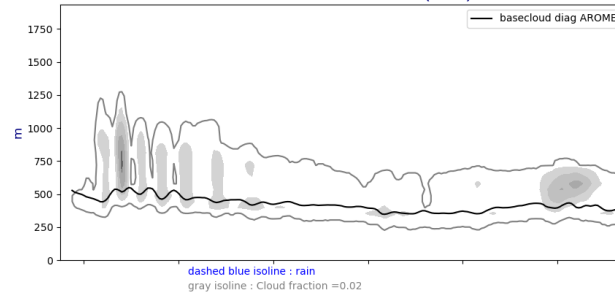


Lon. cross section @22W fct : J,J+1, J+2 @ 12 UTC

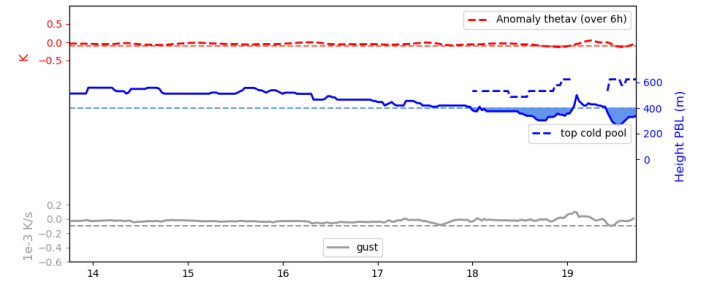
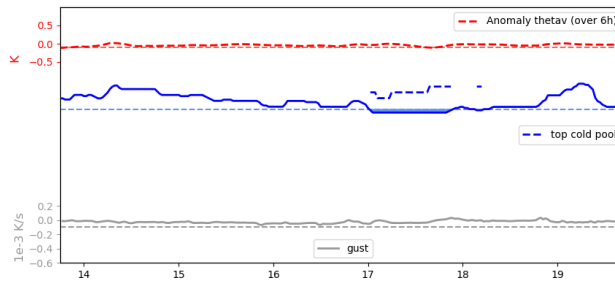
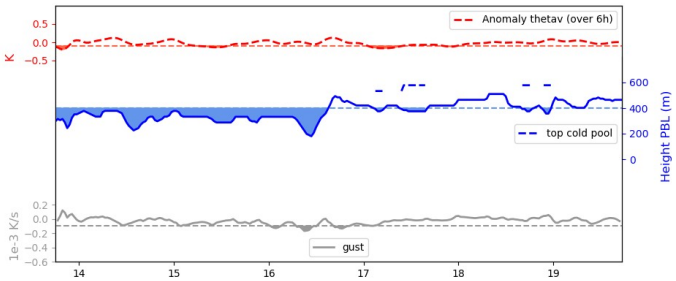
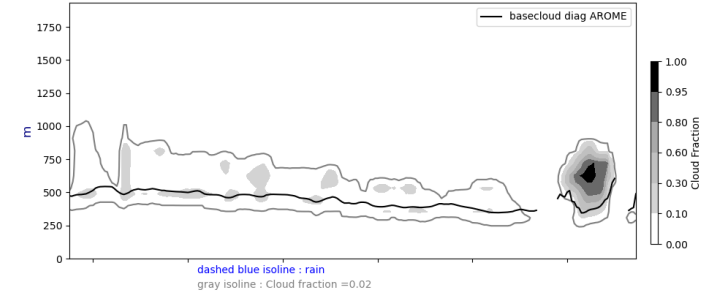
Cross section S/N @ -22W
20240728-12-UTC ech(12h)



Cross section S/N @ -22W
20240729-12-UTC ech(36h)



Cross section S/N @ -22W
20240730-12-UTC ech(60h)



Week forecast J - J+7

Daily PW and wind @ 925 hPa – total and anomalies

Decomposition PW/Wind and Waves contours J to J+3

Waves : Velocity potential @ 200 hPa, day J to J+7

Equatorial Waves filtering hovmollers

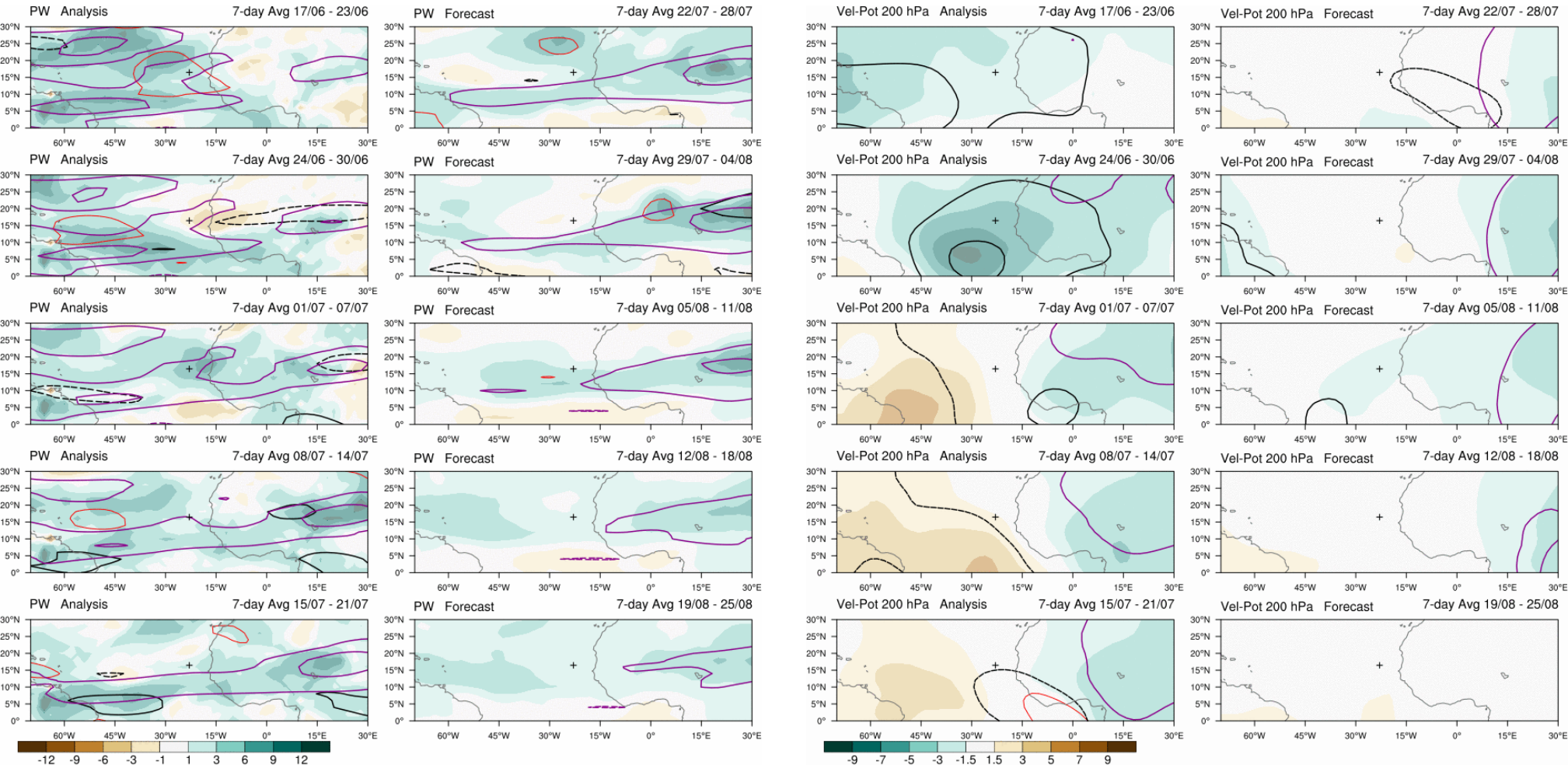
Hovmoller anomaly

Monsoon Flow

African Easterly Jet wind 600 hPa

Subseasonal forecast
(updated once a week)

4 weeks forecast PW et VP200



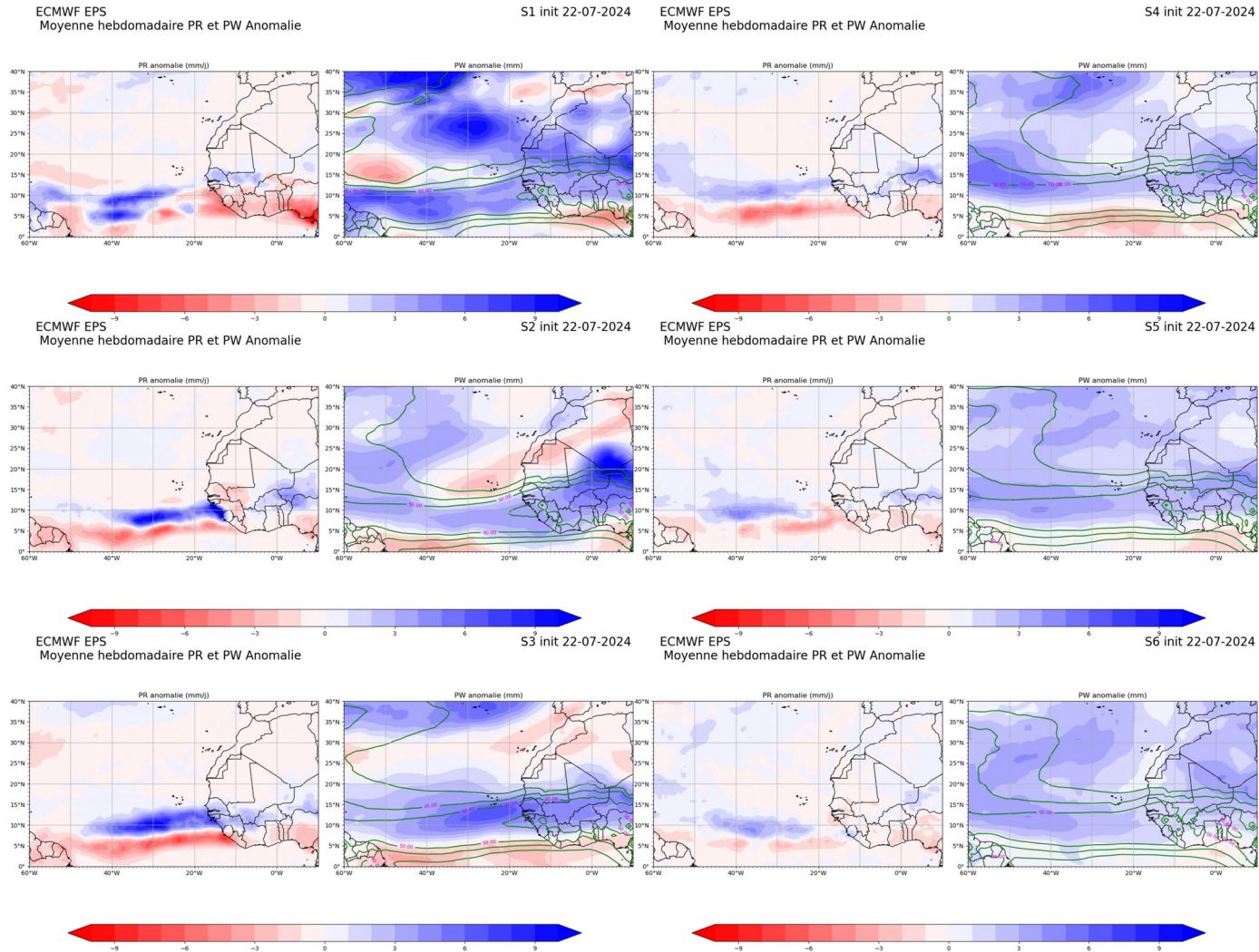
Contours: 2.5, 5, 10, mm
 — MRG/TD
 — Kelvin
 — Rossby
 — MJO
 — Low

contact: Philippe Peyrille
 philippe.peyrille@meteo.fr

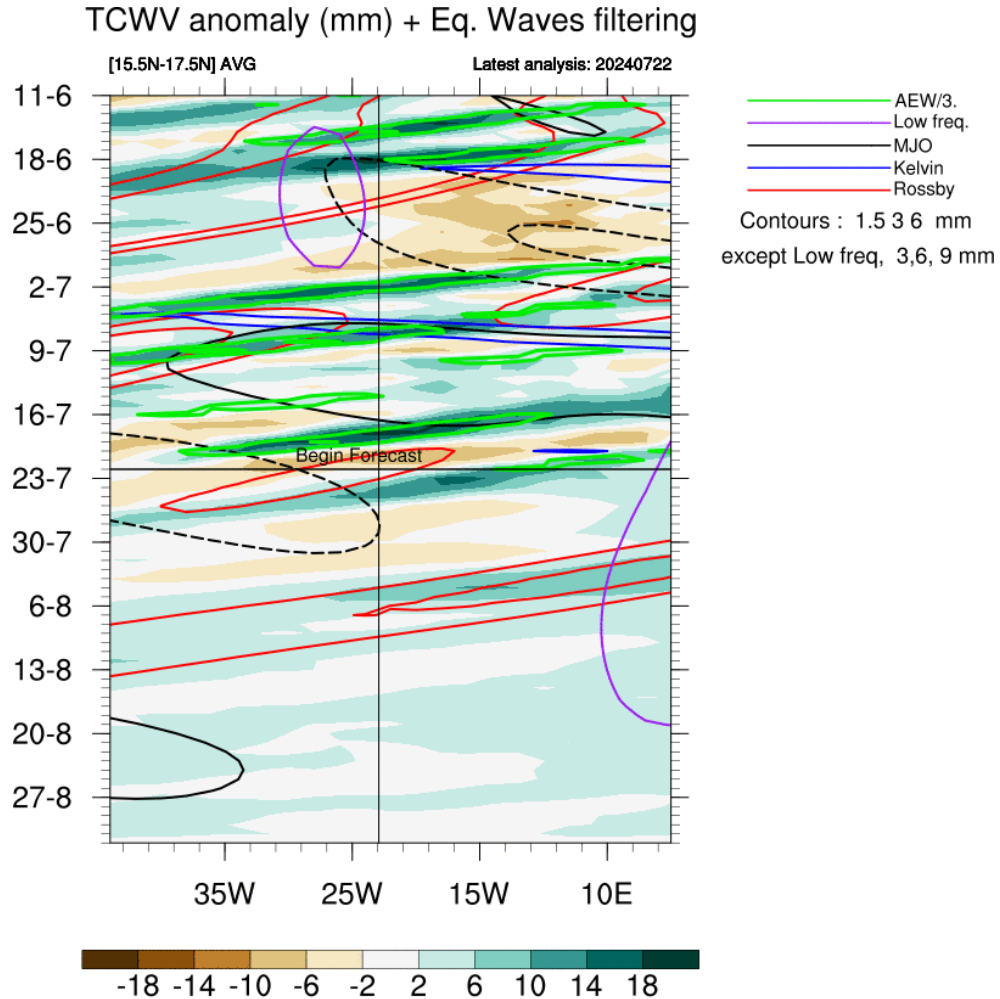
Contours: -6, -4, -2, m2s-1
 — MRG/TD
 — Kelvin
 — Rossby
 — MJO
 — Low

contact: Philippe Peyrille
 philippe.peyrille@meteo.fr

Precipitation and Precipitable Water weekly anomalies + PW contours (40 mm every 5 mm)



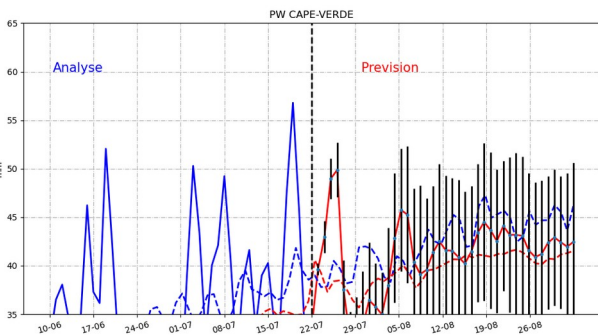
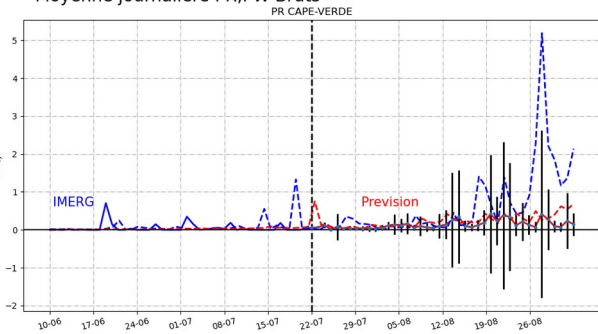
Hovmoller forecast PW over 4 weeks



Temporal evolution PR, PW (+ EKE)

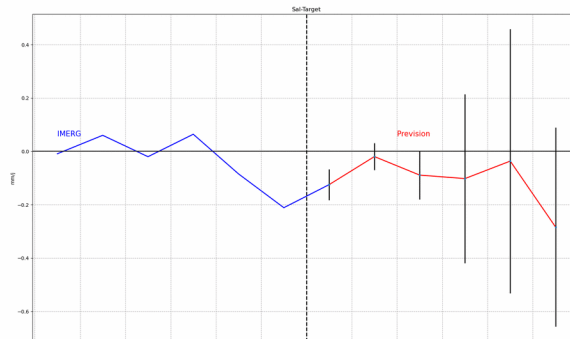
journalier

ECMWF EPS
init 22-07
Moyenne journaliere PR,PW Bruts

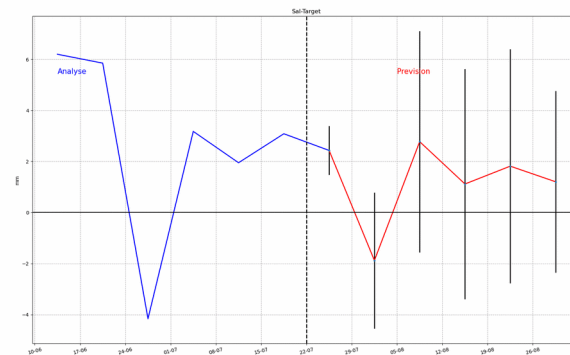


hebdomadaire

ECMWF EPS
Moyenne hebdomadaire PR Anomalie



ECMWF EPS
Moyenne hebdomadaire PW Anomalie



Summary

Param	J	J+1	J+2	J+3	J+4	J+5	Wave
PW/ PW*							
VP200							
VV 500							
vorticity							
Wind @ 700 hPa (m/s)							
PBL height (m)							
Base cloud (m)							
Orga cloud							

